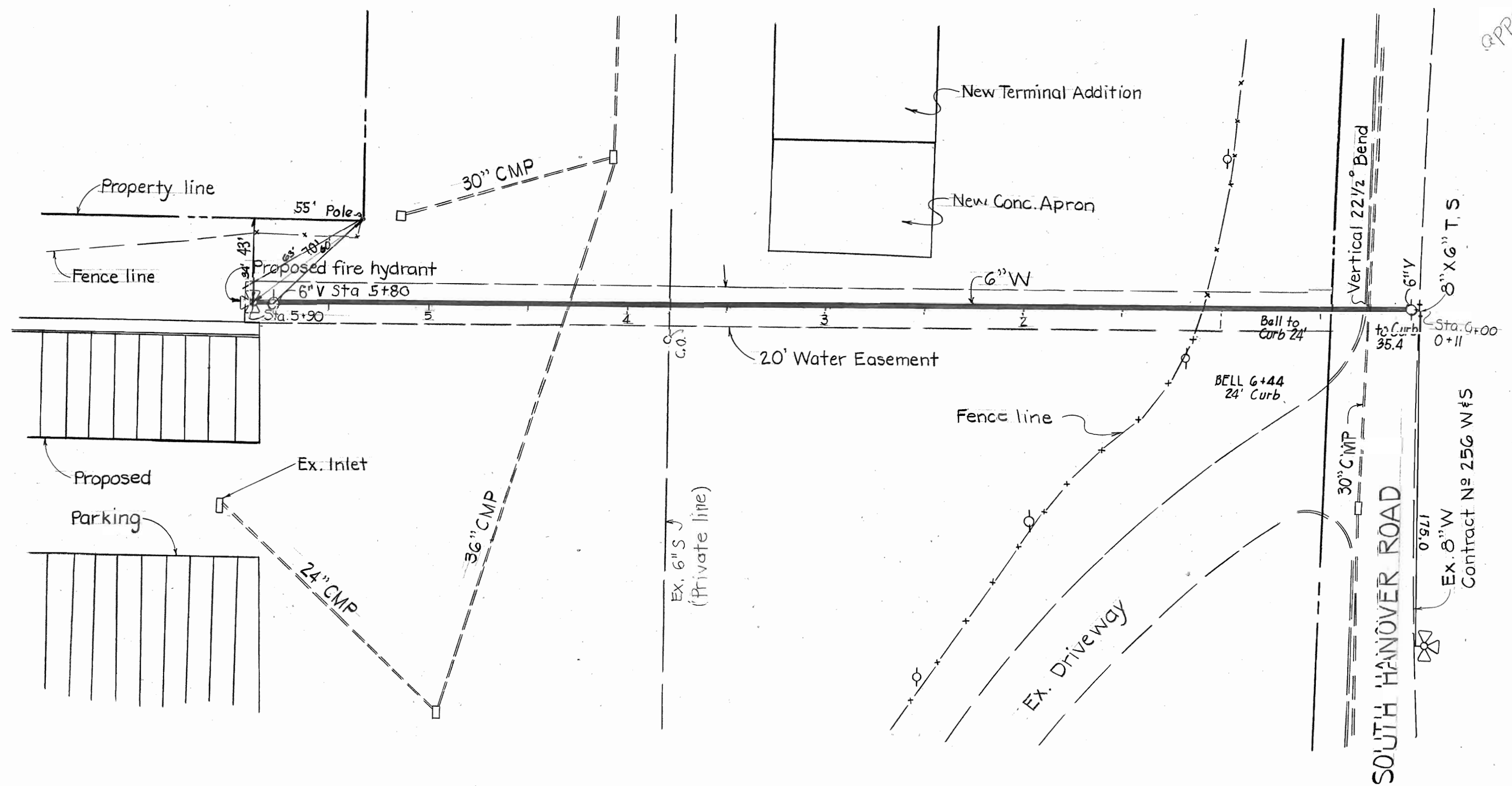
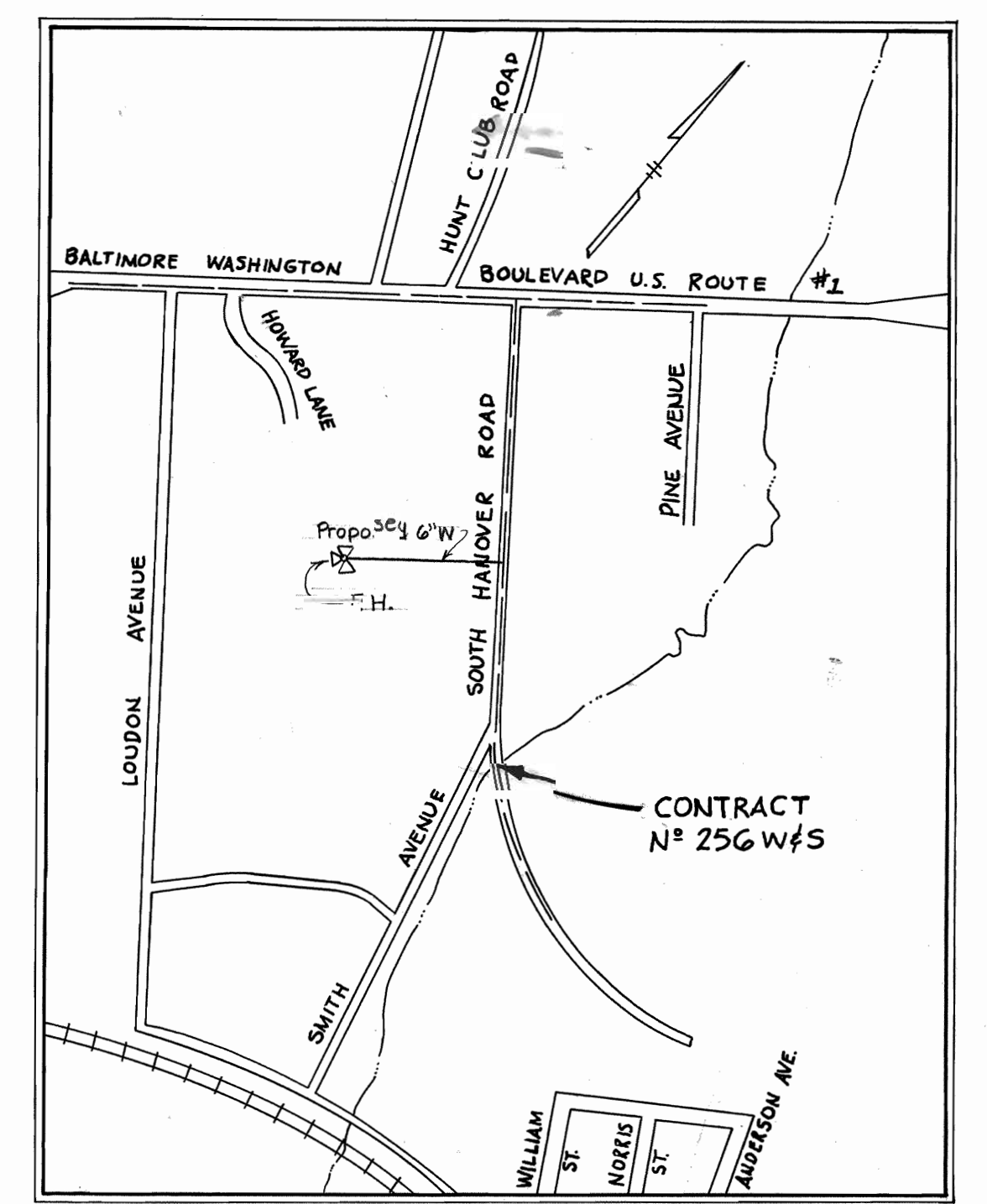


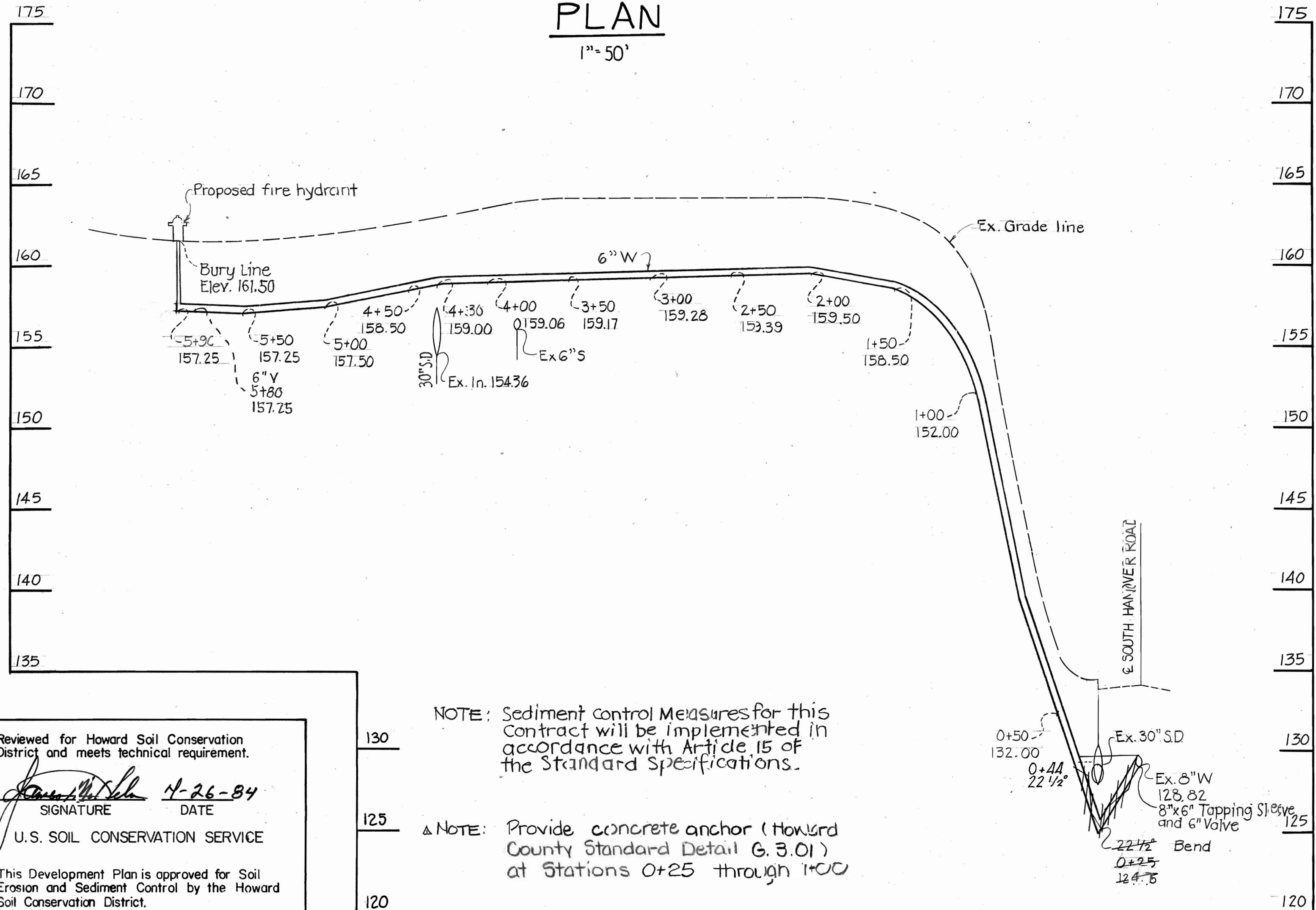
QUANTITY		
ITEM	ESTIMATED	AS BUILT
6" W	590 L.F.	59, L.F.
F.H.	1 unit	1 UNIT
6" Valve	1 unit	1 UNIT
8" x 6" TS & V	1 unit	1 UNIT



Approximately  
876,000  
497,500



VICINITY MAP  
Scale: 1" = 600'



NOTE: Sediment control measures for this contract will be implemented in accordance with Article 15 of the Standard Specifications.

NOTE: Provide concrete anchor (Howard County Standard Detail G.3.01) at Stations 0+25 through 1+00

PROFILE SCALE: HOR. 1" = 50' VERT. 1" = 5'

GENERAL NOTES

- The approximate location of existing utility is shown. The Contractor shall take all necessary precautions to protect existing utilities and to maintain uninterrupted service. Any damage incurred due to the Contractor's operations shall be repaired immediately at Contractor's expense.
- All horizontal controls are based on Maryland State Coordinates.
- All vertical controls are based on USGS datum.
- All pipe elevations shown are invert elevations.
- All utilities shall be cleared by a min. 6". All utility poles shall be cleared by a min. of 2' or tunneled if required. Cost for tunneling or bracing poles shall be included in the unit prices bid for excavation and backfill for water mains.
- For all standard details, see standards bound in specifications.
- The contractor shall locate existing utilities in advance of construction operations in the vicinity of proposed utilities.
- Notify the Bureau of Utilities, Howard County Phone 992-2366, prior to making any tie on existing water main.
- The contractor shall remove tree stumps and roots along the line of excavation as directed by the Engineer. Cost for such removal shall be included in the unit prices bid for excavation and backfill for water and sewer mains.
- The contractor shall place regulation 'Men Working' and warning signs as required to comply with Md. SHA Manual of Traffic Control for Highway Construction and Maintenance Operations.
- All water mains shall be .D.I.P. unless otherwise noted.
- The top of all water mains shall have a min. of 3'-6" cover unless otherwise noted.
- All valves shall be strapped to the tees in accordance with the standard details.
- All water mains fittings shall be buttressed or anchored with concrete in accordance with standard details.
- All fire hydrants shall be strapped to the tees and shall be buttressed with concrete in accordance with the standard details. The cost of strapping fire hydrants and valves shall be included in the unit price bid for furnishing and installing fire hydrants shall be compacted in accordance with Sec. 1003.03.15 of the standard specifications. Fire hydrant bury line elevation shall be set to the elevations shown on the drawing.
- Water house connection shall be for inside meter settings.
- The Contractor shall notify the following utilities at least (5) days before starting work shown.  
Baltimore Gas and Electric-Underground Electric Distribution: 234-5891-Underground Gas Distribution: 234-5333  
Miss Utility: 59-0100  
C&P Telephone Co.: 752-9976  
Bureau of Utilities: 992-2366

Reviewed for Howard Soil Conservation District and meets technical requirement.

*[Signature]* 4-26-84  
SIGNATURE DATE  
U.S. SOIL CONSERVATION SERVICE

This Development Plan is approved for Soil Erosion and Sediment Control by the Howard Soil Conservation District.

APPROVED:  
*[Signature]* 4/26/84  
HOWARD S.C.D. DATE

DEPARTMENT OF PUBLIC WORKS  
HOWARD COUNTY MARYLAND

*[Signature]* 4-22-84  
DIRECTOR OF PUBLIC WORKS DATE

*[Signature]* 4-26-84  
CHIEF, BUREAU OF UTILITIES DATE

*[Signature]* 4-26-84  
CHIEF, BUREAU OF ENGINEERING DATE

*[Signature]* 4-26-84  
CHIEF, LAND DEVELOPMENT DIV. DATE

PURDUM & JESCHKE  
ENGINEERS  
1029 N. CALVERT  
BALTIMORE, MARYLAND



DES:	
DRN:	
CHK:	
DATE:	
BY:	
NO.:	
REVISION:	
DATE:	

PS & Added note to profile, corrected General Notes, 3 & 15, 6-29-81

WATER MAIN EXTENSION  
PLAN & PROFILE

600' SCALE MAP NO. \_\_\_\_\_ BLOCK NO. \_\_\_\_\_

OVERNITE TRANSPORTATION COMPANY  
FIRST ELECTION DISTRICT  
CONTRACT NO. 44-1217-D

SCALE  
HOR: 1" = 50'  
VERT: 1" = 5'

SHEET  
1 OF 1