

QUANTITIES

ITEM	BID	AS-BUILT	MATERIAL/SUPPLIER
8"(D.I.P.) L.F.	110	109	DIP For
8" Sewer L.F.	1820	1821	PVC For
Manholes Ea.	8	8	Pre-Cast Am. Castng

AS-BUILTS
 April 85
 30

REVIEWED FOR HOWARD SOIL CONSERVATION DISTRICT AND MEETS TECHNICAL REQUIREMENT

James Helms/z
 SIGNATURE
 U.S. SOIL CONSERVATION SERVICE

5-22-84
 DATE

This Development Plan is approved for Soil Erosion and Sediment Control by the Howard County Conservation District.

APPROVED:
 Robert W. Ziehn
 HOWARD S.C.D.

5-22-84
 DATE

DEPARTMENT OF PUBLIC WORKS
 HOWARD COUNTY, MARYLAND

Robert H. Reinger
 CHIEF - BUREAU OF UTILITIES - DATE 6-8-84

Allen J. Brown
 CHIEF - UTILITIES DIVISION - DATE 6/7/84

WHITMAN, REQUARDT AND ASSOCIATES ENGINEERS
 2315 ST. PAUL ST.
 BALTIMORE, MARYLAND

DES: J.R.K.
 DRN: J.R.K.
 CHK: K.B.N.
 DATE: 5/2/84

BY	NO.	REVISION	DATE

VICINITY MAP PLAN & PROFILE OF SEWER MAINS

600' SCALE MAP NO. 25 BLOCK NO. 1

ELLICOTT CITY
 POPLAR DRIVE
 PROJECT NO. S-6107
 CONTRACT NO. 10-1203

SCALE AS SHOWN
SHEET 1 OF 3

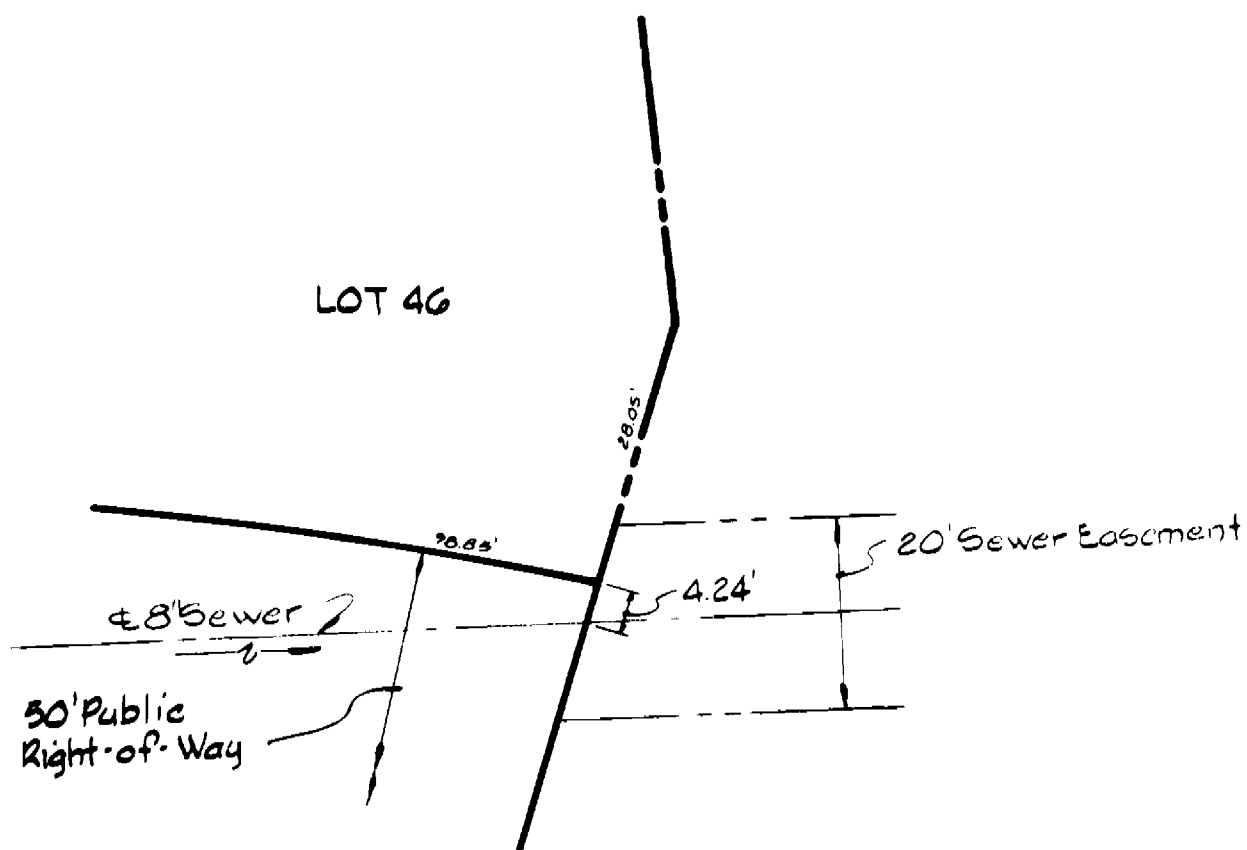
BENCH MARKS

W.R. I.A. BM#3 Elev. 528.73
 R.R. Spike in Root 18" Twin Maple
 at P.I. #1084.
 W.R. I.A. BM#4 Elev. 559.31
 R.R. Spike in Root 30" Poplar
 at P.I. #1086.

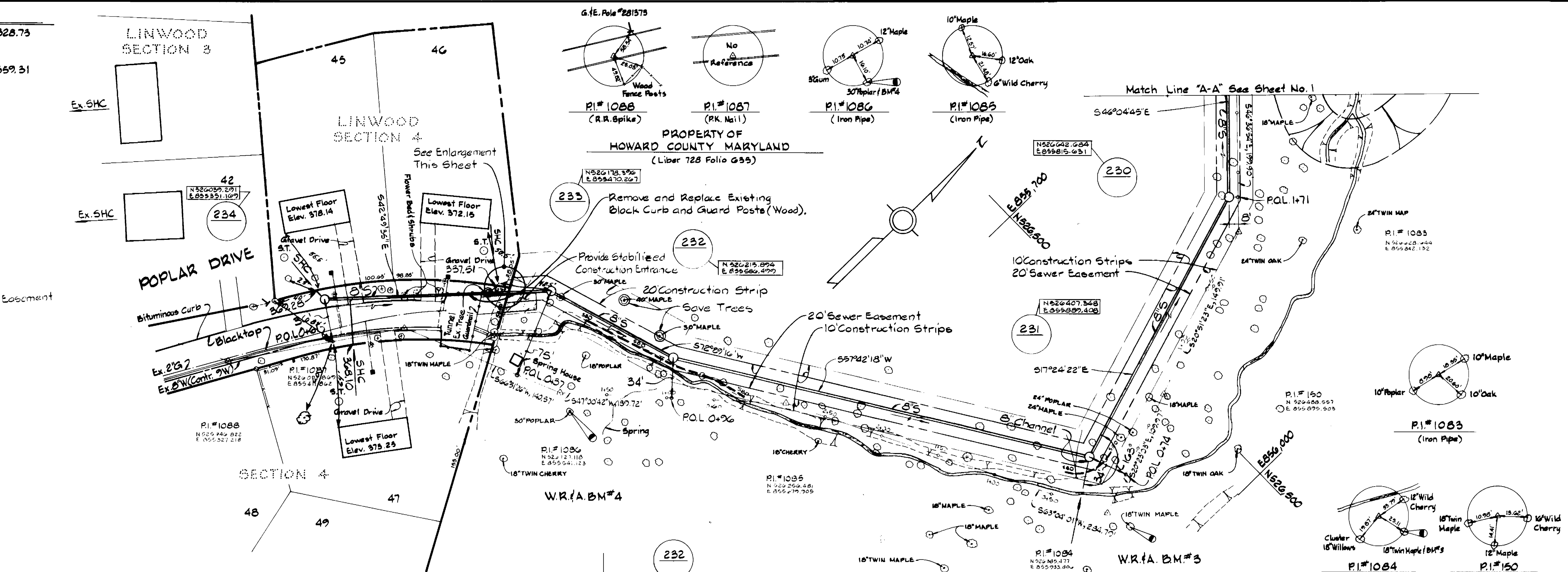
LINWOOD SECTION 3

LINWOOD SECTION 4

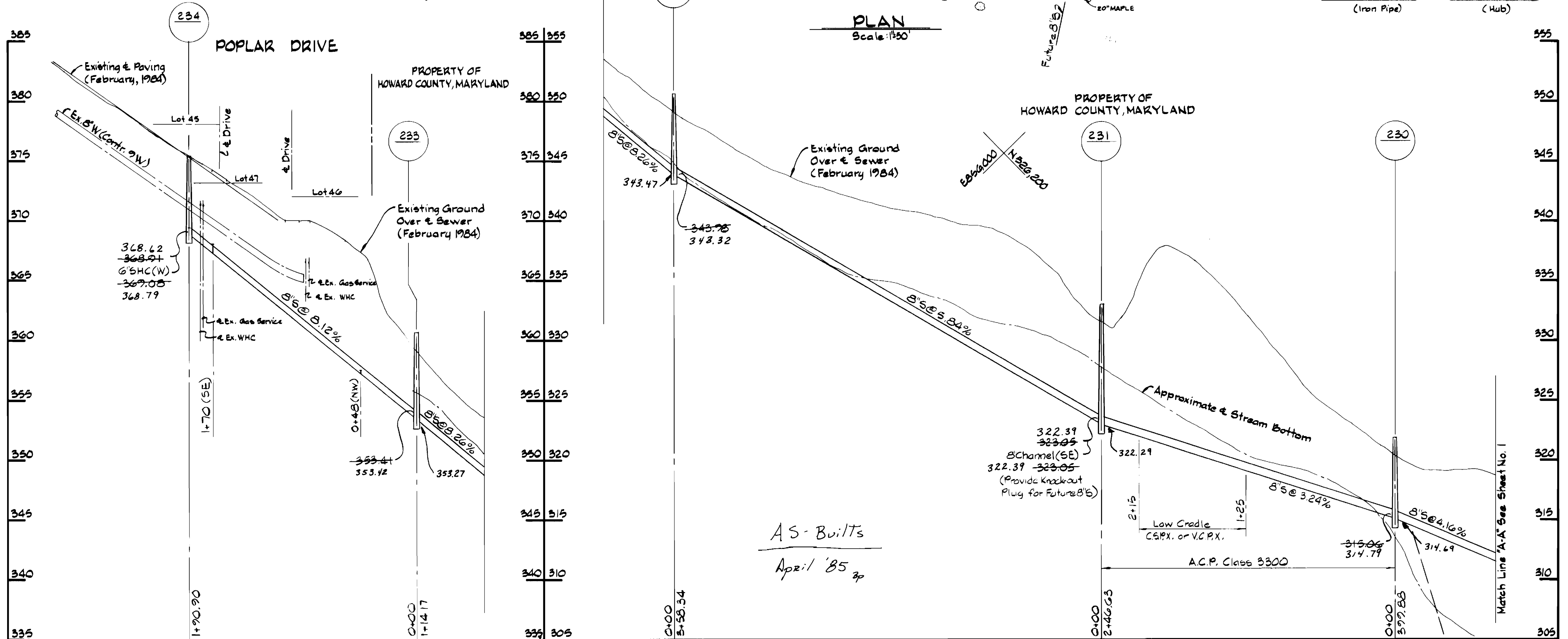
PROPERTY OF HOWARD COUNTY MARYLAND
 (Liber 728 Folio 635)



LOCATION ENLARGEMENT
 No Scale



PLAN
 Scale: 1"=50'



PROFILE
 Scale: H: 1"=50'
 V: 1"=5'

DEPARTMENT OF PUBLIC WORKS
 HOWARD COUNTY, MARYLAND

DIRECTOR OF PUBLIC WORKS - DATE
Robert M. Beisinger 6-8-84

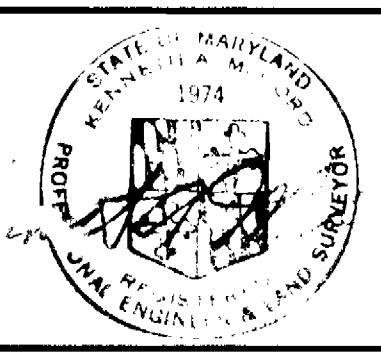
CHIEF - BUREAU OF UTILITIES - DATE

CHIEF - BUREAU OF ENGINEERING - DATE
Allen S. Brown 6/7/84

CHIEF - UTILITIES DIVISION - DATE

WHITMAN, REQUARDT
 AND ASSOCIATES
 ENGINEERS

2315 ST. PAUL ST.
 BALTIMORE, MARYLAND



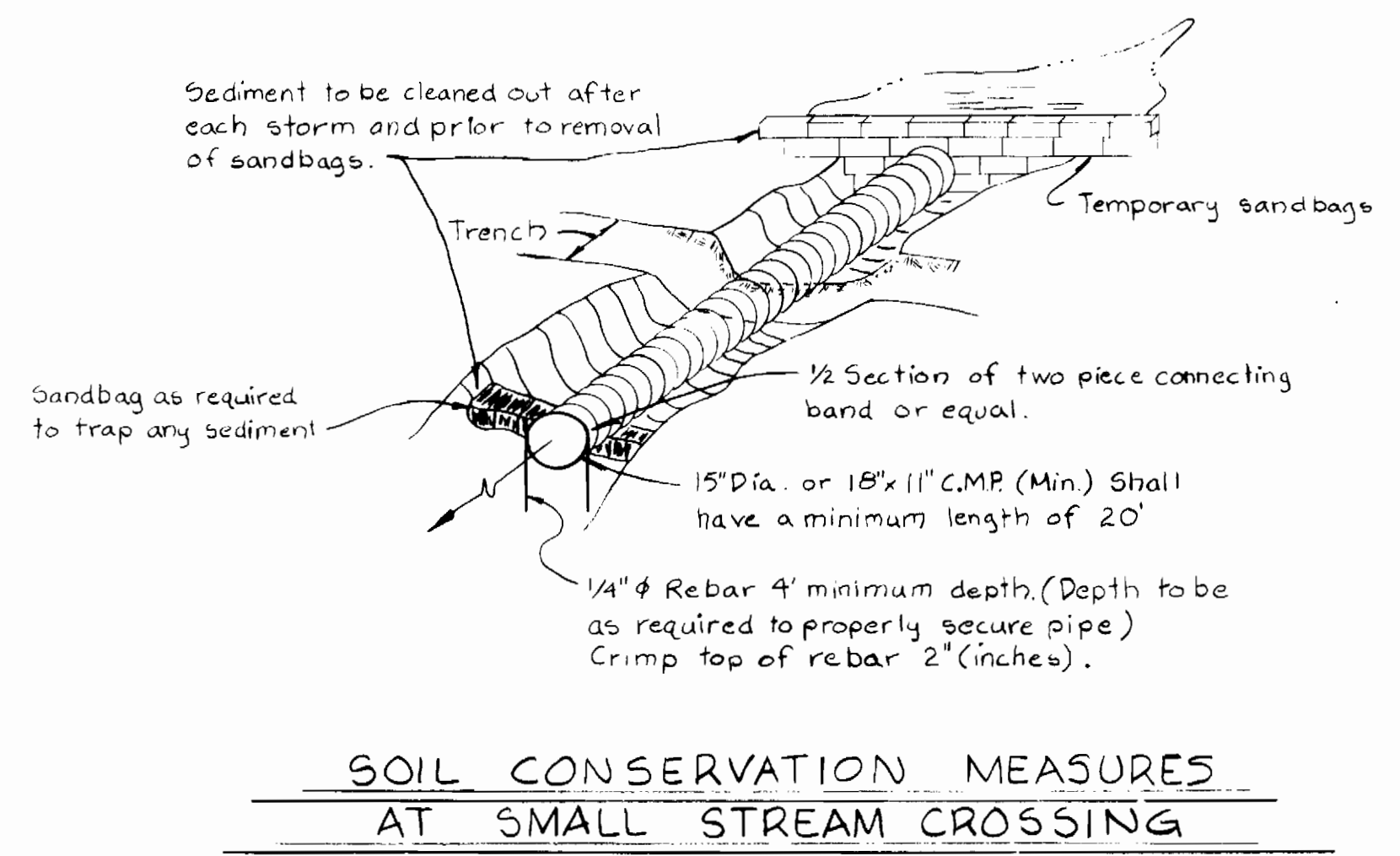
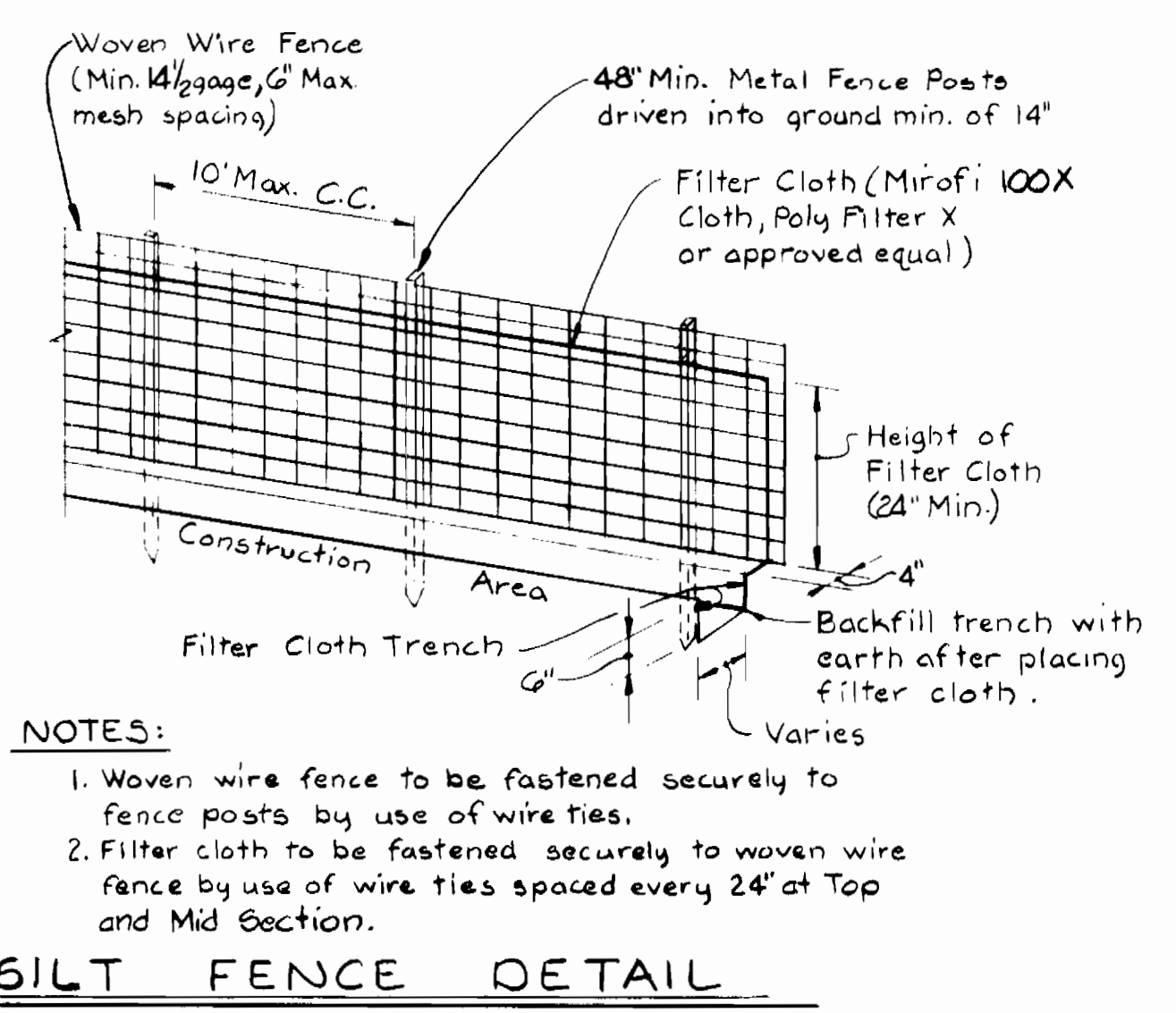
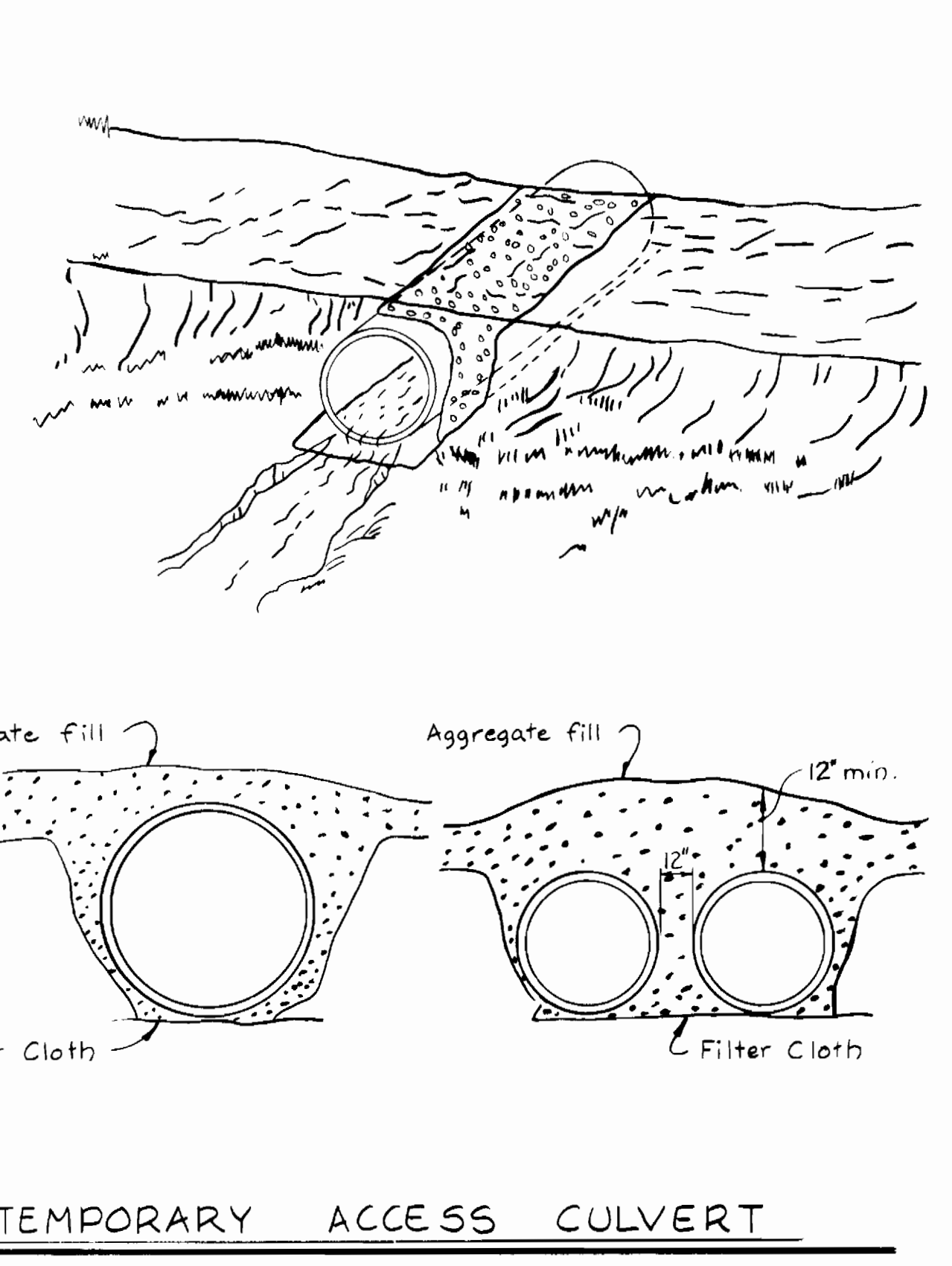
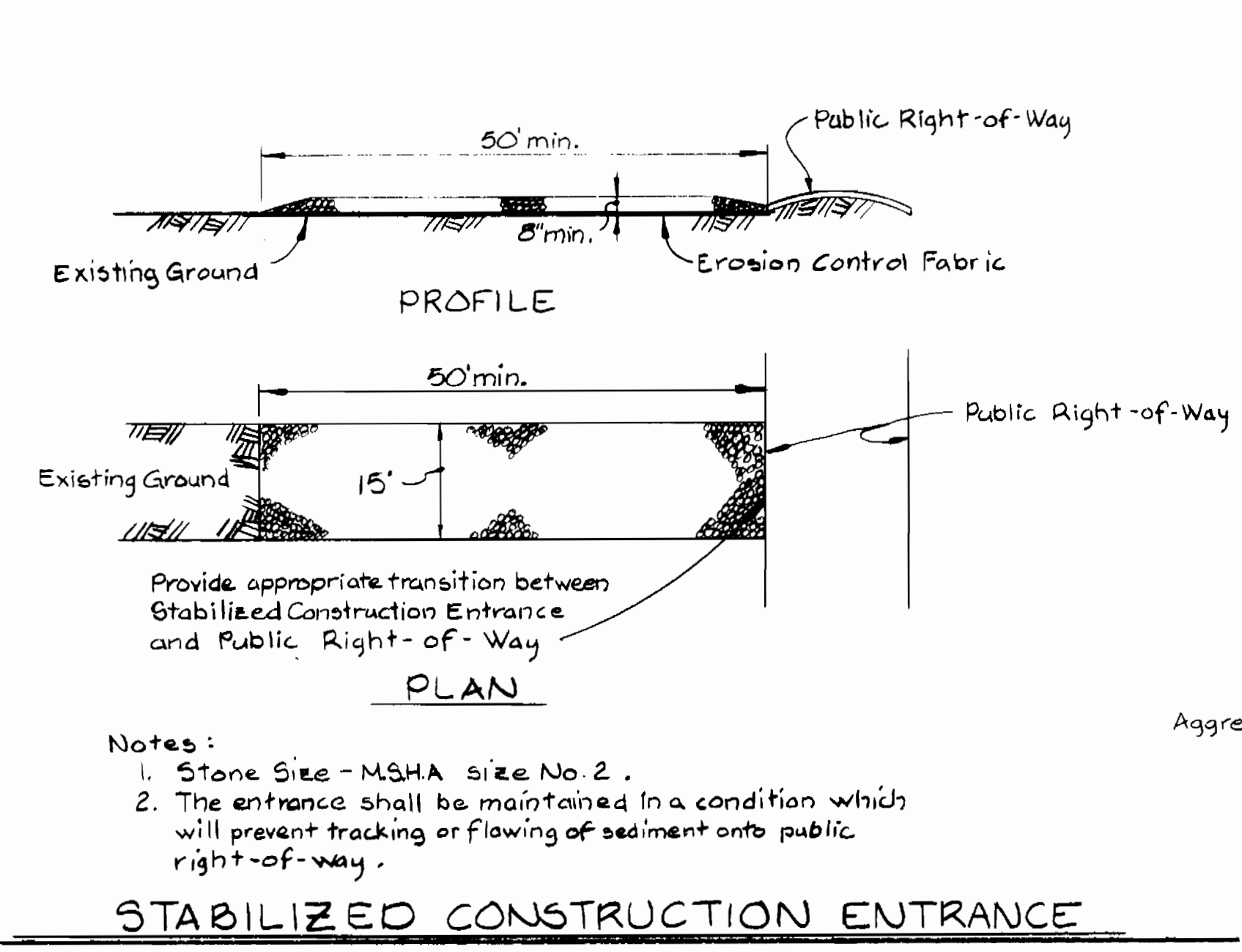
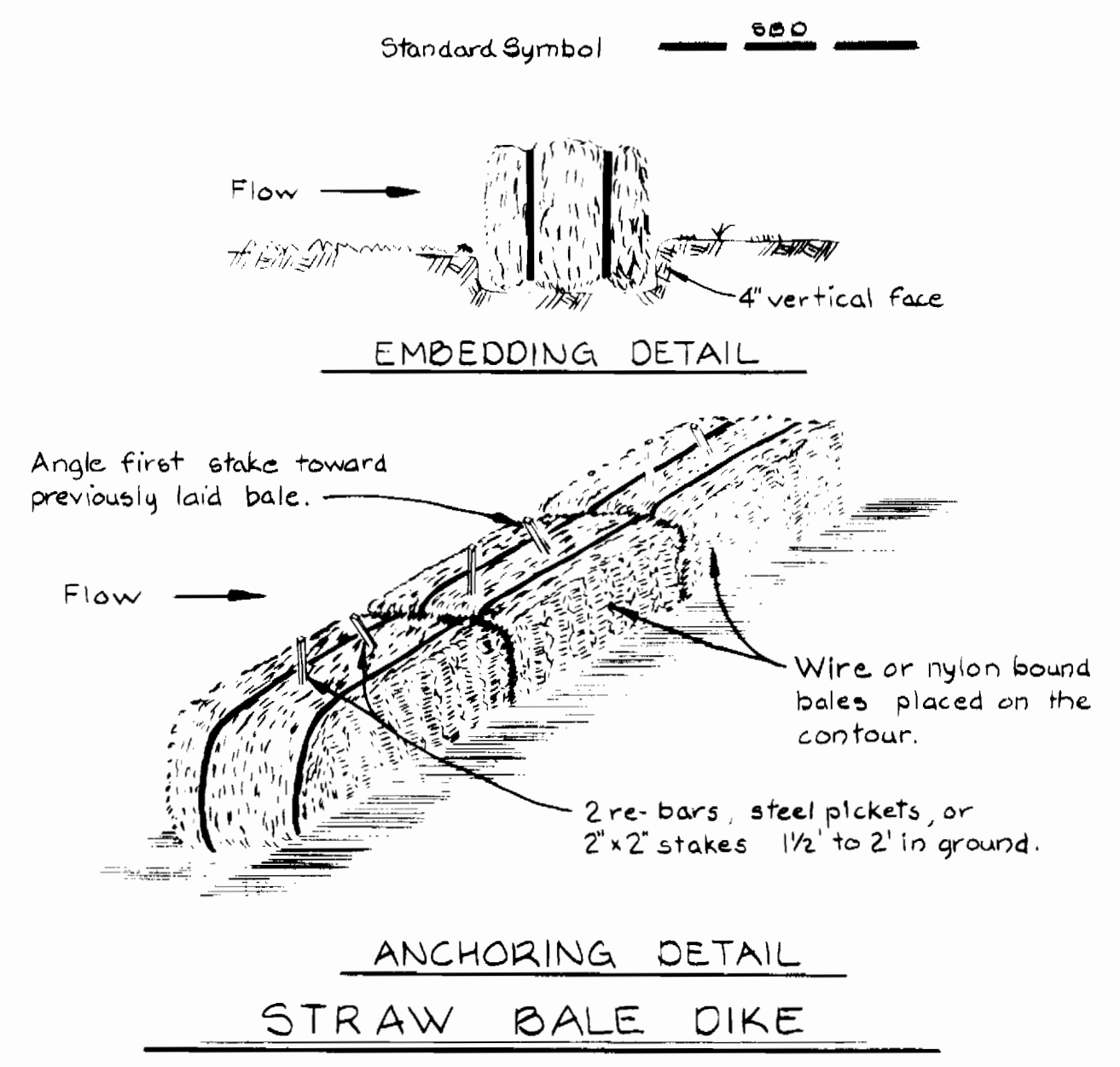
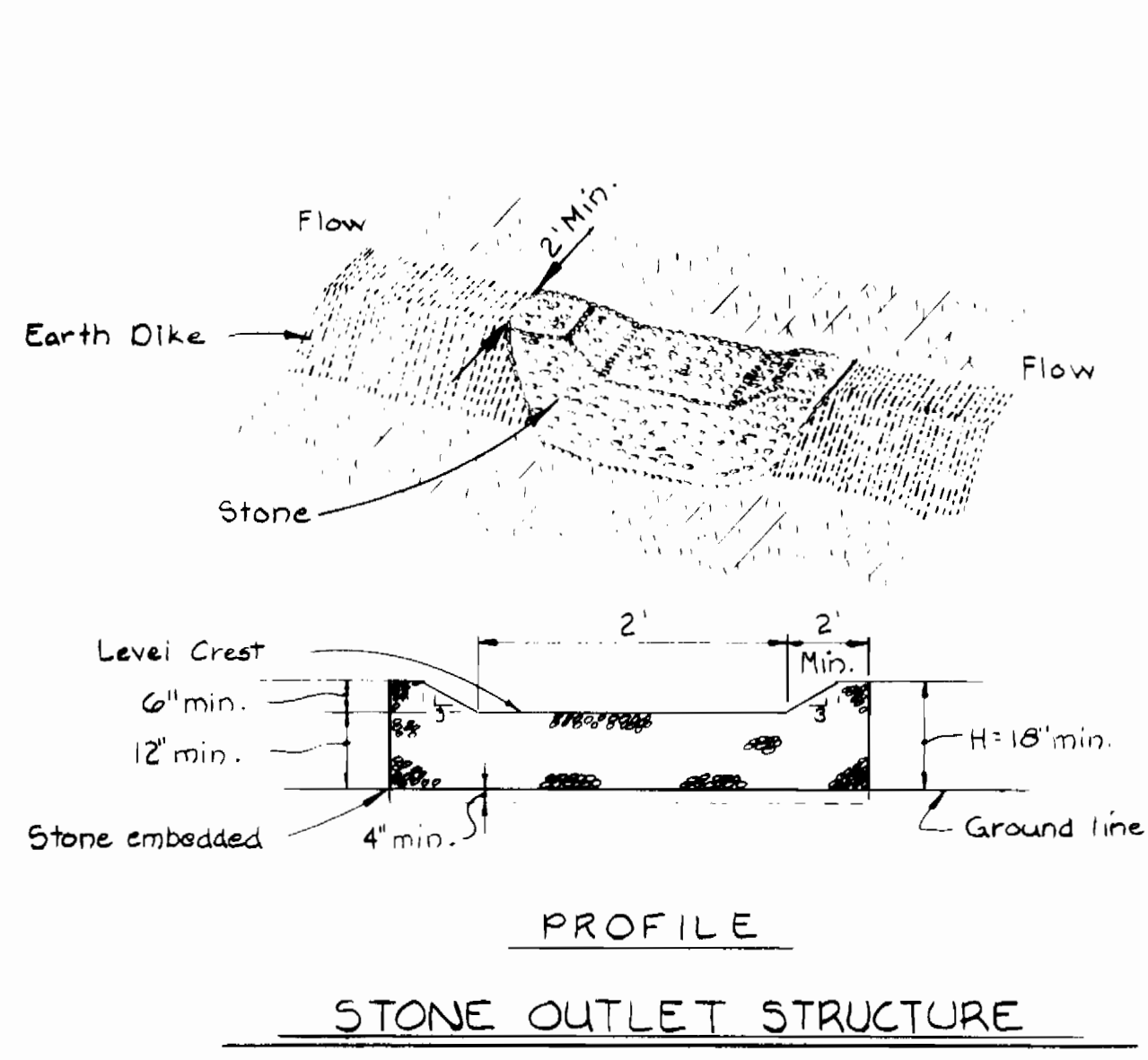
DES: J.R.K.				
DRN: J.R.K.				
CHK: R.E.N.				
DATE: 5/2/84				
BY: NO.		REVISION		DATE

PLAN & PROFILE OF
 SEWER MAINS

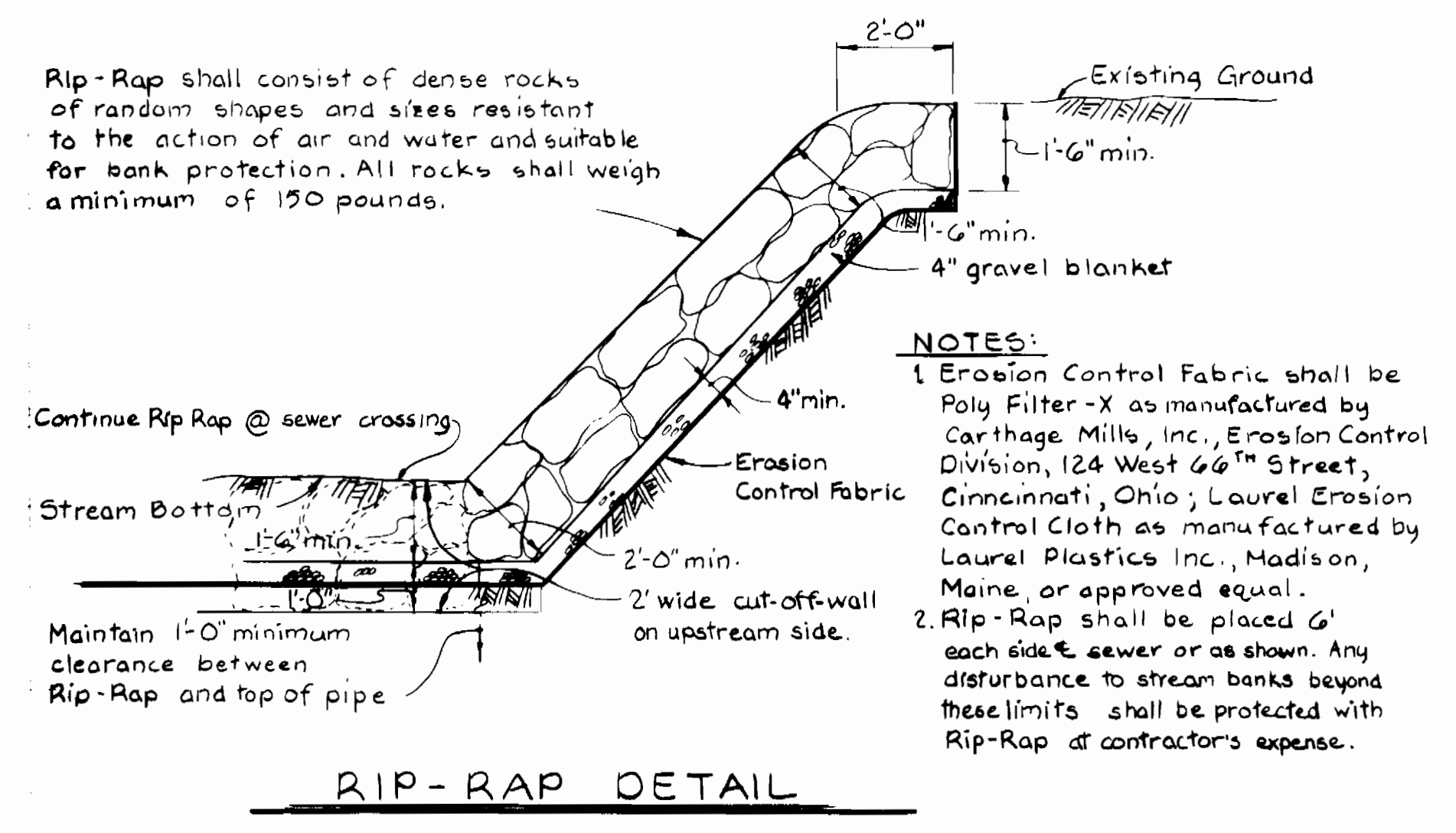
600' SCALE MAP NO. 25 BLOCK NO. 1

ELLICOTT CITY
 POPLAR DRIVE
 PROJECT NO. S-6107
 CONTRACT NO. 10-1203

SCALE AS SHOWN
 SHEET 2 OF 3



- CONSTRUCTION SEQUENCE**
SEDIMENT CONTROL PROCEDURES
1. OBTAIN SEDIMENT CONTROL PERMIT (ARTICLE 15-05-3).
 2. OBTAIN WATER RESOURCES ADMINISTRATION PERMIT.
 3. CONSTRUCT CONTINUOUS SEDIMENT BARRIER FOR ALL DISTURBED AREAS UNTIL THE AREA IS STABILIZED.
 4. CLEAR, GRUB AND STRIP AS REQUIRED FOR PIPE ENCASEMENT. PROTECT STREAM FROM EROSION OF STORED TOP SOIL. SEPARATE TOP SOIL FROM SUBSOIL.
 5. CONSTRUCT PIPELINE.
 6. ALL EXCAVATED MATERIAL SHALL BE STOCKPILED ON HIGH SIDE OF TRENCH.
 7. RESTORE EROSION CONTROL STRUCTURES DISTURBED BY SEWER CONSTRUCTION.
 8. STABILIZE DISTURBED AREAS AS CONSTRUCTION PROGRESSES WITH TEMPORARY SEEDING AND MULCHING (OR PERMANENT RESTORATION).
 9. COMPLETE PERMANENT RESTORATION.
 10. ALL SEDIMENT CONTROL DEVICES SHALL REMAIN IN SERVICE UNTIL REMOVAL IS APPROVED BY THE WATER RESOURCES ADMINISTRATION INSPECTOR AND BY THE S.C.S. INSPECTOR.
- * RESTORATION (TEMPORARY OR PERMANENT) OF AN AREA BETWEEN MANHOLES SHALL FOLLOW WITHIN ONE WEEK OF PIPELAYING IN THAT AREA.



DEPARTMENT OF PUBLIC WORKS HOWARD COUNTY, MARYLAND Director: <i>John F. Norman</i> 6-1-14 Chief - Bureau of Public Works - DATE Chief - Bureau of Utilities - DATE		WHITMAN, REQUARDT AND ASSOCIATES ENGINEERS 2315 ST. PAUL ST. BALTIMORE, MARYLAND Registered Professional Engineer & Land Surveyor		DES: J.R.K. DRN: D.C.N. CHK: R.B.N. DATE: 5/21/84		SEDIMENT CONTROL DETAILS		Poplar Drive Collector Sewers ELLICOTT CITY POPLAR DRIVE PROJECT NO. S-6107 CONTRACT NO. 10-1203		SCALE AS SHOWN SHEET 3 OF 3	
W.O. 10063		October 30, 1984		REVISION		BLOCK NO.		600' SCALE MAP NO.		BY NO.	