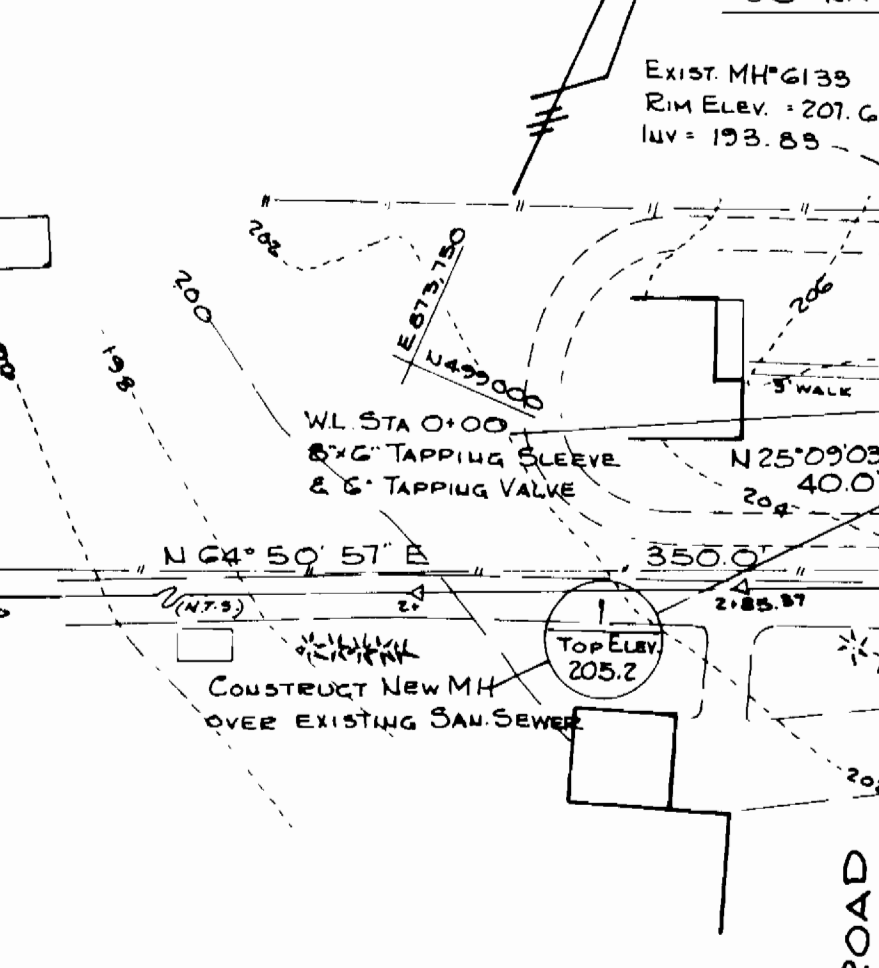


M.C. BM #1 NAIL IN G & E POLE #175013
ELEV. 212.81
M.C. BM #2 NAIL IN G & E POLE #241192
ELEV. 178.48

UTILITY CROSSING NOTE #1
EXISTING GRADE - 205.9'
BOTTOM EXISTING 12" CMP - 203.9'
TOP PROPOSED 6" WATER - 202.5'
CLEARANCE - 1.0'



NOTE:
CLASS 'B' BEDDING IS
REQUIRED FOR ACP CL3300,
FROM STATION 0+00 TO
STATION 3+40.

NOTE:
1. THE CONTRACTOR IS ADVISED THAT
UNDERGROUND TELEPHONE LINES
AND OVERHEAD POWER LINES ARE
IN EXISTENCE IN AND ALONG
THE CONSTRUCTION AREA.
2. UPON COMPLETION OF UNDERGROUND
WORK & PROPER BACKFILLING OF ALL
TRENCHES, THE CONTRACTOR SHALL
PLACE A 6" THICKNESS OF CR-G GRAVEL
15 FT. WIDE (7.5 FT EITHER SIDE OF CENTERLINE)
OVER THE ENTIRE LENGTH OF EXISTING PRIVATE GRAVEL ROAD.
CR-G MATERIAL & PLACEMENT SHALL CONFORM TO
MARYLAND STATE HIGHWAY ADMINISTRATION STD. SPECIFICATIONS.

Reviewed for Howard County SCD
and meets technical requirements.
Janice Helms 5/1/84
U.S. Soil Conservation Service Date
This development plan is approved for
soil erosion & sediment control by the
Howard County Soil Conservation District.
APPROVED: *Joseph P. Brown 7/1/84*
HOWARD COUNTY SCD DATE

ENGINEER'S CERTIFICATION
I certify that this plan for erosion and
sediment control represents a practical
and workable plan based on my personal
knowledge of the site conditions and that
it was prepared in accordance with the
requirements of the Howard County Soil
Conservation District.
John E. Harms 11/1/84
M.C. CRONE, INC.
20 RIDGELY AVE.
ANNAPOLIS, MD. 21401

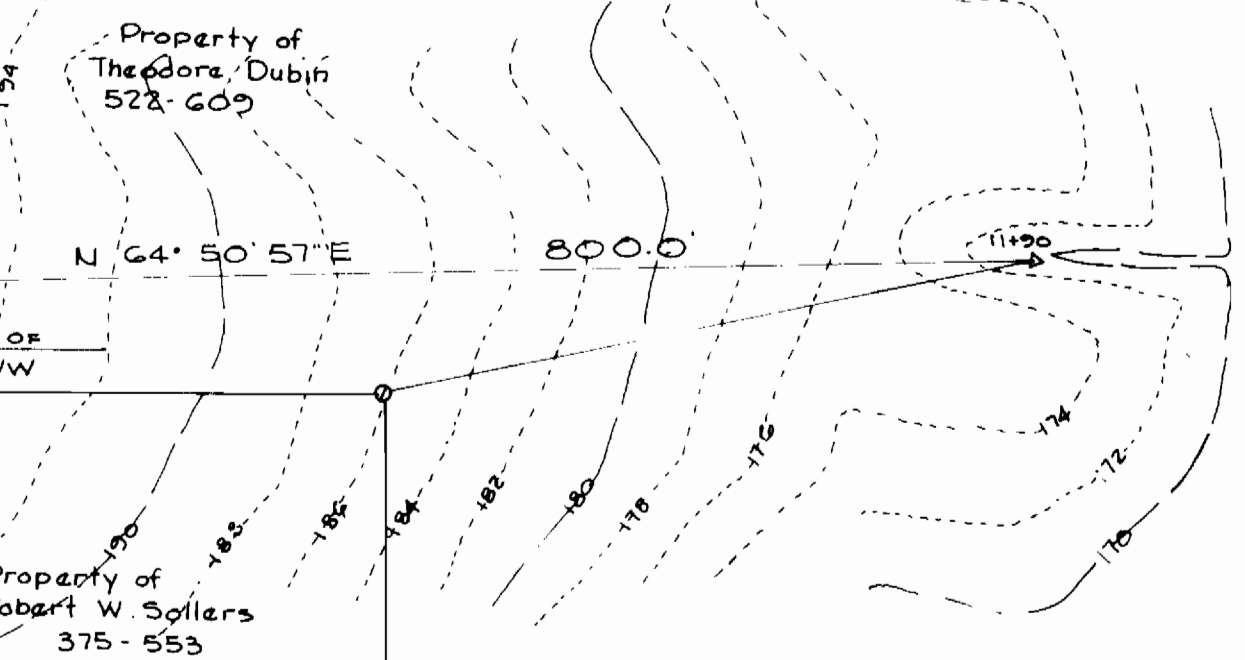
DEVELOPER'S CERTIFICATION
I/we certify that all development
and construction will be done according
to this plan, and that any responsible
personnel involved in the construction
project will have a Certificate of
Attendance at a Department of Natural
Resources Approved Training Program
for the Control of Sediment and
Erosion before beginning the project.
John E. Harms 11/1/84
BUREAU OF ENGINEERING
DEPARTMENT OF PUBLIC WORKS

DEPARTMENT OF PUBLIC WORKS
HOWARD COUNTY, MARYLAND
11-27-84
11/21/84
CHIEF, BUREAU OF UTILITIES
CHIEF, UTILITIES DIVISION

Mc CRONE, INC.
20 RIDGELY AVE.
ANNAPOLIS, MD.
Phone: 301-269-0531

DES: C. Cook	J.R.B.	AS BUILT JOHN E. HARMS JR. 4/25/84	8-284
DRN: D. Hascher	D.H.	4 Revision per Howard Co phone call 11-23-84	12-6-84
	D.H.	3 Revisions per Howard Co phone call 11-1-84	11-13-84
CHK:	D.H.	2 Revisions per Howard Co. DPW Letter of 10/4/84	10-15-84
	D.H.	1 Revisions per Howard Co. DPW Letter of 9/20/84	10-4-84
DATE:	BY NO.	REVISION	DATE

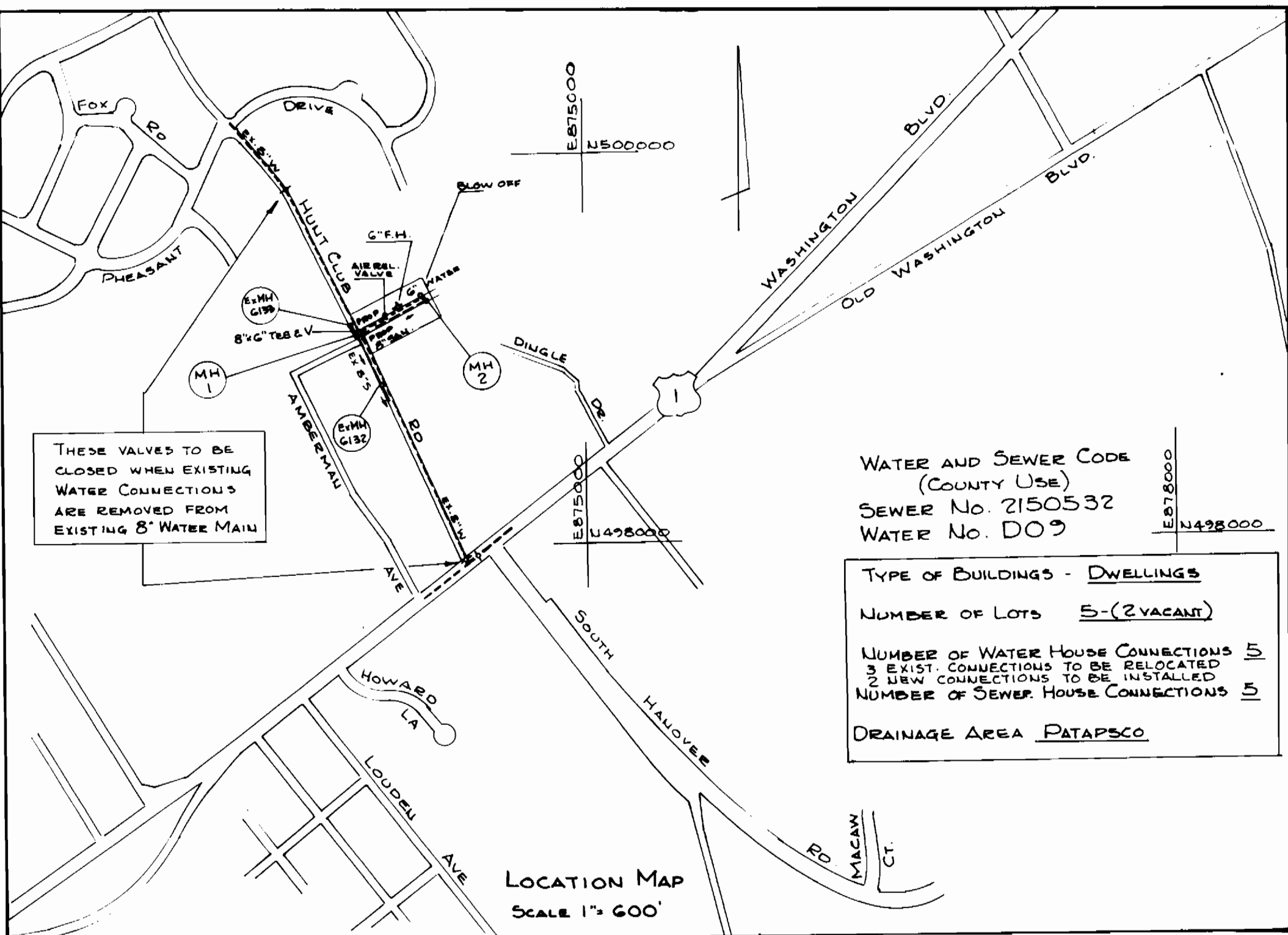
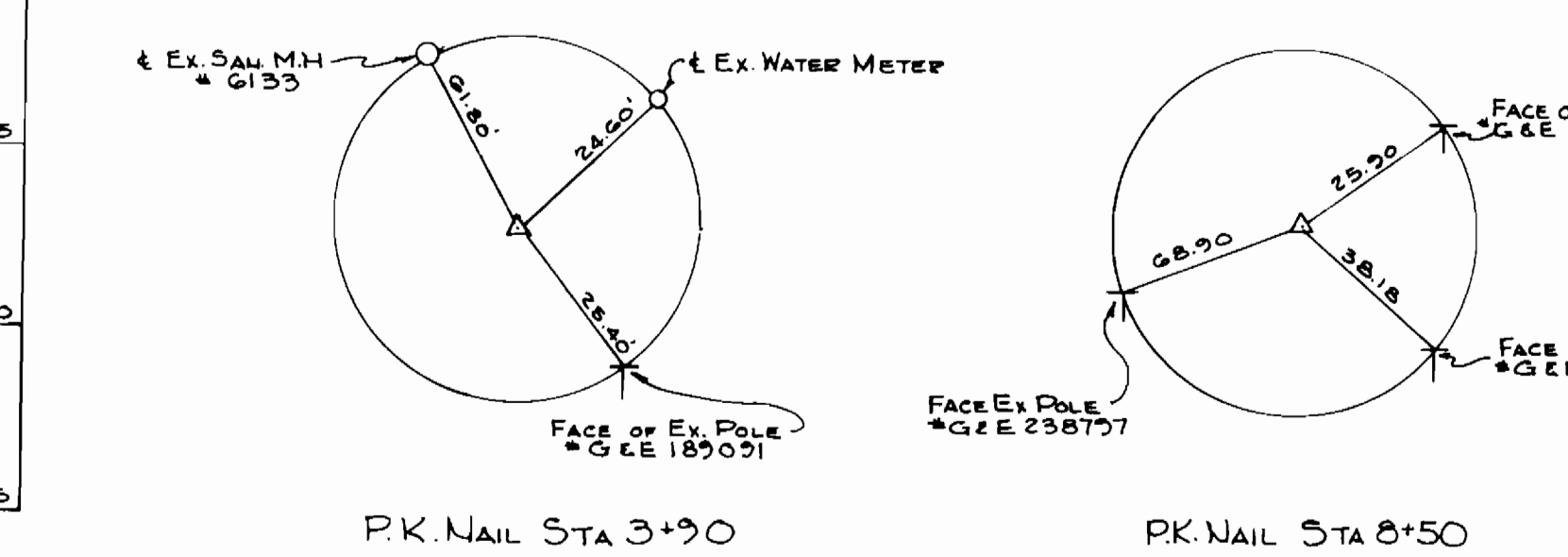
ITEM	ESTIMATED	AS BUILT	MATERIAL/SUPPLIER
8" SEWER	400 L.F.	400 L.F.	P.V.C. AEP
MANHOLE	2 EA.	2 EA.	PRECAST ATL. PRECAST
6" SEWER	47 L.F.	58 L.F.	P.V.C. AEP
6" WATER	409 L.F.	409 L.F.	D.I.P. ATLANTIC STS.
3/4" WATER	110 L.F.	110 L.F.	COPPER AEP
6" G TAPPING SLEEVE & VALVE	1 EA.	1 EA.	AEP
FIRE HYDRANT	1 EA.	1 EA.	AEP
AIR RELEASE VALVE	1 EA.	1 EA.	AEP
WATER MAIN DRAIN	1 EA.	1 EA.	AEP
METER VAULT	3 EA.	2 EA.	PRECAST CONCRETE MAYER BROS.



LEGEND: SOIL EROSION AND SEDIMENT CONTROL
S.B.D. STRAW BALE DIKE SEE DETAILS IN SPECIFICATIONS.
S.O.S. STONE OUTLET STRUCTURE SEE DETAILS IN SPECIFICATIONS.
STRAW BALE DIKE TO REMAIN IN PLACE THROUGHOUT CONSTRUCTION PERIOD.

GENERAL NOTES

- PART I**
- Approximate location of existing mains are shown. The contractor shall take all necessary precautions to protect existing mains and services and maintain uninterrupted supply. Any damage incurred shall be repaired immediately to the satisfaction of the Engineer at the Contractor's expense.
 - All horizontal controls are based on Maryland State Coordinates.
 - All vertical controls are based on U.S.G.S. data.
 - All pipe elevations shown are invert elevations.
 - Clear all utilities by a minimum of 6". Clear all poles by 2'-0" minimum or tunnel as required. The owner has contacted the utility companies and has made arrangements for bracing of poles as shown on the drawings. In the event the contractor's work requires the bracing of additional poles, any cost incurred by the owner for bracing of additional poles or damages shall be deducted from money owed the contractor. The contractor shall coordinate with the utility companies to schedule the bracing of the poles.
 - For details not shown on drawings, and for materials and construction methods, use Howard County Design Manual, Volume IV, Standard Specifications and Details for Construction. The contractor shall have a copy of Volume IV on the job.
 - Where test pits have been made on existing utilities, they are noted by the symbol [] at the location of the test pit. A note or notes containing the results of the test pit or pits is located on the drawings. Existing utilities in the vicinity of the proposed work for which test pits have not been dug shall be located by the contractor two weeks in advance of construction operations at his own expense.
 - Contractor shall notify the following utilities or agencies at least five working days before starting work on these plans:
State Highway Administration 531-5533
Baltimore Gas & Electric Co. Contractor Services 561-2585
Baltimore Gas & Electric Co. Underground Damage Control-234-5621
Baltimore Gas & Electric Co. Trouble Shooting - 298-9015
Mass Chilled Water 1-527-0100
Colonial Pipeline Co. - 795-1390
Bureau of Utilities, Howard Co. Dept. of Public Works - 992-2360
 - Trees and shrubs are to be protected from damage to maximum extent. Trees and shrubs located within the construction strip are not to be removed or damaged by the contractor.
 - Contractor shall remove trees, stumps, and roots along line of excavation. Payment for such removal shall be included in the unit price bid for construction of the main.



THESE VALVES TO BE CLOSED WHEN EXISTING WATER CONNECTIONS ARE REMOVED FROM EXISTING 8" WATER MAIN

WATER AND SEWER CODE (COUNTY USE)
SEWER No. 2150532
WATER No. 009

TYPE OF BUILDINGS - DWELLINGS
NUMBER OF LOTS 5 (2 VACANT)
NUMBER OF WATER HOUSE CONNECTIONS 5
3 EXIST. CONNECTIONS TO BE RELOCATED
2 NEW CONNECTIONS TO BE INSTALLED
NUMBER OF SEWER HOUSE CONNECTIONS 5
DRAINAGE AREA PATAPSCO

- PART II WATER**
- All water mains to be DIP unless otherwise noted.
 - Tops of all water mains to have a minimum of 3.5 ft cover unless otherwise noted.
 - Valves adjacent to tees shall be strapped to tees.
 - All fittings shall be buttressed or anchored with concrete in accordance with the Standard Details unless otherwise provided for on the drawings.
 - Fire hydrants shall be set to the bury line elevations shown on the drawings. All fire hydrants shall be strapped and buttressed with concrete in accordance with Section 1003 of the Standard Specifications.
 - The contractor shall not operate any water main valves on the existing water system.
- PART III Sewer**
- All sewer mains shall be D.I.P., Class 50, A.C.P. Class 3300 or P.V.C. SDB-35
 - The contractor shall provide a joint in all sewer mains within 2'-0" of exterior manhole walls.
 - All manholes shall be 4'-0" inside diameter unless otherwise noted.
 - Manholes shown with 12" and 16" walls are brick manholes only.
 - House(s) with the symbol "C.N.S." indicates the cellar cannot be served.

- SOIL EROSION AND SEDIMENT CONTROL NOTES**
- Contractor shall have Grading Permit on the site prior to construction.
 - All work shall be done in accordance with the STATE OF MARYLAND, STANDARDS AND SPECIFICATIONS FOR SOIL EROSION AND SEDIMENT CONTROL IN DEVELOPMENT AREAS and ARTICLE 15 OF HOWARD COUNTY, DEPT. OF PUBLIC WORKS, STANDARD SPECIFICATIONS.
 - See Specifications for Details of Straw Bale Dikes (S.B.D.) and Stone Outlet Structures (S.O.S.)
 - Following initial soil disturbance or redistribution, permanent or temporary stabilization shall be completed within:
(a) Seven calendar days as to the surface of all perimeter controls, dikes, swales, ditches, perimeter slopes, and all slopes greater than 3:1 horizontal to 1:1 vertical (3:1) and -
(b) Fourteen days as to all other disturbed or graded areas on the project site.
The requirements of 08.05.01.06 & B(3)(e)(iv) do not apply to those areas which are shown on the plan and are currently being used for material storage, or for those areas where construction activities are currently being performed. Maintenance shall be performed as necessary to ensure that stabilized areas continuously meet the appropriate requirements of the Standards and Specifications for Soil Erosion and Sediment Control in Developing Areas (1975), which is incorporated by reference in Regulation 08.05.01.10.

- SEQUENCE OF CONSTRUCTION**
- Locate and install Sediment and Erosion Control measures.
 - Test Pit location of Existing Water House Connections.
 - Layout and install New Water Line.
 - Test, and if necessary, repair New Water Line.
 - Sterilize New Water Line and put into service.
 - Connect to Existing Water House Connections, See procedure in the Special Provisions.
 - Layout and install New Sanitary Sewer Line.
 - Test and, if necessary, repair New Sewer Line.
 - Put New Sanitary Sewer Line into service.
 - Conduct final cleanup of site.