

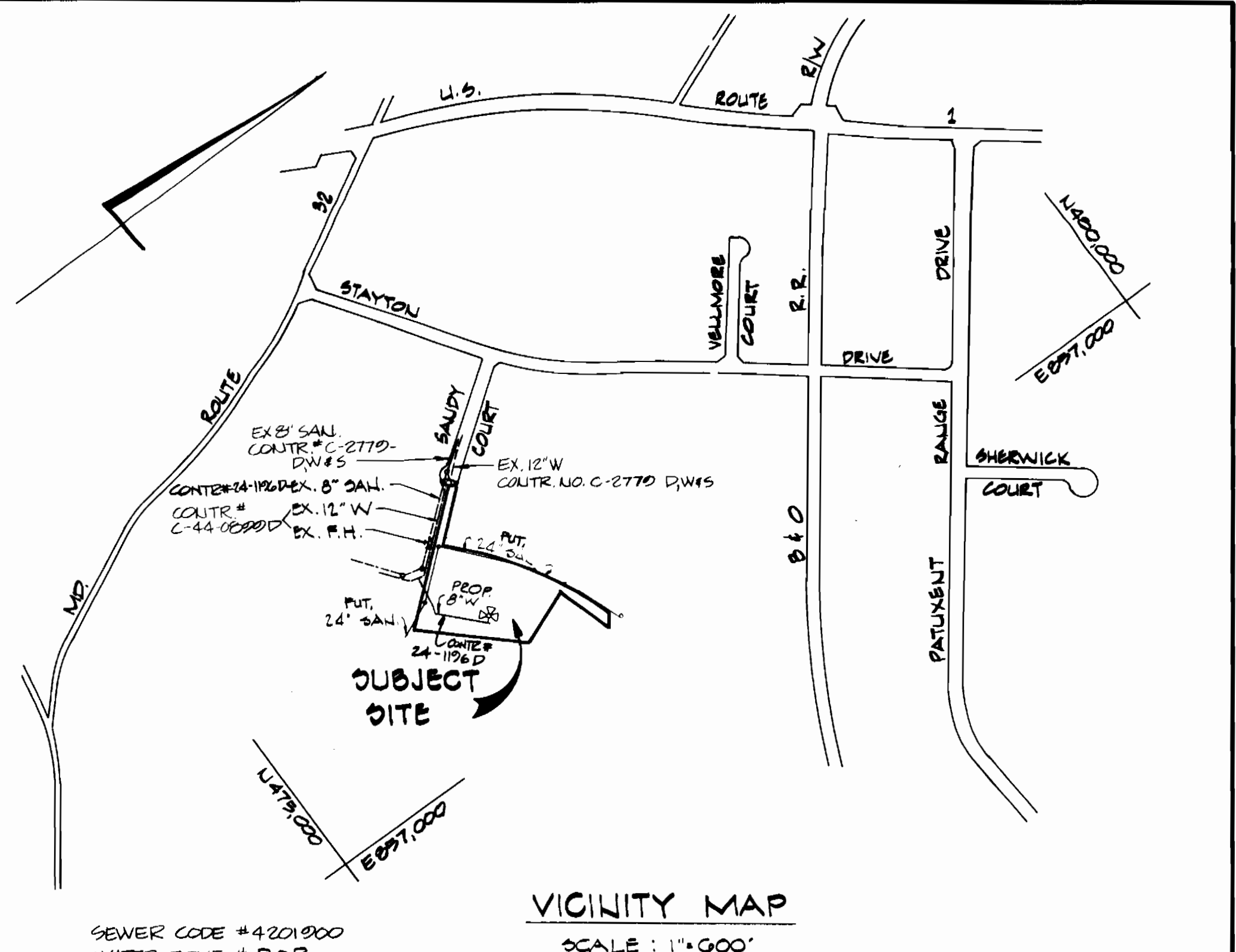
QUANTITIES			
ITEM	ESTIMATED	AS-BUILT	MATERIAL/SUPPLIER
8" SEWER	17 LF	47 LF	PVC/JOHNS-MANVILLE CORR.
8" VALVE	-	2	C1/US PIPE & FOUNDRY
8" F.H.	20 LF	166 LF INCLUDING PRIVATE	D.I.P./GRIFFIN PIPE PR. CO.
6" WATER	40 LF	35 LF	DITTO
6" F.H.	2	2	C1/US PIPE & FOUNDRY
6" VALVE	2	2	DITTO
1/2 BEND - 12"	1	1	C1/GRIFFIN PIPE PR. CO.
12" x 12" TAPPING OLEVEE & VALVE	1	1	C1/US PIPE & FOUNDRY
1/2 BEND - 12"	2	2	C1/GRIFFIN PIPE PR. CO.
12" x 6" TEE	2	2	DITTO
12" CAP	1	2	DITTO
12" x 8" TEE	2	2	DITTO
12" WATER	484 LF	484 LF	DIP / DITTO
6" SEWER	51 LF	51 LF	PVC JOHNS-MANVILLE
6" SEWER	80	80	D.I.P./GRIFFIN PIPE PR. CO.

NOTE: EX. 6" PUBLIC SEWER MAIN BETWEEN EX. SMH #3 & EX. SMH #4 TO BE UPGRADED TO 8" PUBLIC SEWER MAIN

AS PER DEVELOPERS AGREEMENT, THIS SECTION OF THE SEWER BETWEEN SMH #4 & SMH #5 WILL BECOME PUBLIC SEWER

GENERAL NOTES

- Construction of Water Mains and Sewer Mains shall be in strict accordance with the Standard Specifications and Standard Details of Howard County. Any Damage Incurred shall be repaired immediately at Contractor's Expense.
- All Horizontal Controls are Based on Maryland State Coordinate System
- All Vertical Controls are Based on U.S.C.S. Datum
- Clear All Utilities by a Minimum of 6'. Clear All Poles 2'-0" Minimum or Tunnel as Required.
- Contractor shall locate existing utilities in Advance of Construction Operations in Vicinity of Proposed Utilities.
- Contractor shall notify the following utilities or agencies at least five (5) days before starting work:
 - Miss Utility (Called) 1-800-0100
 - Baltimore Gas & Electric Co. - Undergrd. 234-8533
 - Electric Distribution Engineering, "Damage Control" Mr. G.U. Zeller, Manager 234-8091
 - Baltimore Gas & Electric Co. - Undergrd. Gas Distribution Engineering, Mr. Bill Chesapeake & Potomac Telephone Co. Bureau of Utilities (Howard County) 725-0976
- Contractor shall remove trees, stumps and roots along lines of excavation as directed by the Engineer. Payment for such removal shall be included in the unit price bid for excavation and backfill for water and sewer mains.
- Place Regulation "Men Working" and Warning Signs as required to comply with Maryland State Highway Administration "Manual for Highway Construction and Maintenance Operations."
- All Water Mains to be D.I.P. Unless Listed Otherwise.
- Top of Water Mains to have a Minimum of 3' Cover Unless Listed Otherwise.
- All Valves shall be Strapped to Tees in accordance with Standard Details.
- Block All Fittings with Concrete. See Standard Details.
- Bury Line Elevations on Fire Hydrants shall be set to the Elevations shown on the Drawings. All Fire Hydrants shall be Strapped and Buttraced with Concrete in accordance with Standard Details. Soil Around the Fire Hydrant to be Compacted in accordance with Section 1009 of the Standard Specifications.
- All Water Main Elevations shown are Invert Elevations
- Sediment Control Measures for this Contract will be implemented in accordance with the Grading and Erosion and Sediment Control Plan.
- Water Mains and Water Main Connections must be placed as to have at least one (1) foot separation from the Sanitary Sewer and Sewer House Connection as they Pass Above It.
- Minimum Crimp Radius as specified by the Pipe Manufacturer.
- All Sewer Mains shall be C-6, P.V.C. or A.C.P. Class 2400 Unless Otherwise Listed.
- The Contractor shall provide a Joint in All Sewer Mains Within 2'-0" of Exterior Manhole Wall.
- All Manholes shall be 4'-0" Inside Diameter Unless Otherwise Listed.
- All Sewer Main Elevations are Invert Elevations.
- All Copper Water House Connections shall utilize Flared Type Fittings Only.
- All Water House Connections to be Inside Water Settings.



TYPE OF BUILDING	- OFFICE & WAREHOUSE
NO. OF LOTS	- 1
NUMBER OF WATER H.C.	- 2
NUMBER OF SEWER H.C.	- 1
DRAINAGE AREA	- LITTLE PATUXENT

BENCH MARK: TOP FIRE HYDRANT RT. SIDE SANDY CT. @ STA. 5+83 ELEV. 232.28

PLAN SCALE: 1"=50'

NOTE: NO SITE WORK COVERED BY THIS PLAN SHALL COMMENCE UNTIL A GRADING PERMIT HAS BEEN ISSUED FOR SDP-84-130

REVIEWED FOR HOWARD SOIL CONSERVATION DISTRICT AND MEETS TECHNICAL REQUIREMENT.
 Signature: James M. Deltin
 DATE: 4-12-84
 U.S. SOIL CONSERVATION SERVICE

THIS DEVELOPMENT PLAN IS APPROVED FOR SOIL EROSION AND SEDIMENT CONTROL BY THE HOWARD COUNTY CONSERVATION DISTRICT.
 APPROVED: Robert W. Zickus
 HOWARD S.C.D.
 DATE: 4-12-84

SEDIMENT CONTROL MEASURES FOR CONTRACT WILL BE IMPLEMENTED IN ACCORDANCE WITH ARTICLE 19 OF THE STANDARD SPECIFICATIONS AND S.D.P. # 84-130

DEPARTMENT OF PUBLIC WORKS
 HOWARD COUNTY, MARYLAND
 Director: F. Norman
 Chief - Bureau of Public Works: Robert Beimer
 Chief - Bureau of Utilities: [Signature]

G.W. STEPHENS, JR.
 AND ASSOC., INC.
 CONSULTING ENGINEERS
 303 ALLEGHENY AVE.
 TOWSON, MD 21284



DES: RWR	
DRN: HMB	
CHK: TC	
PN: 04900	
BY: NO	REVISION
DATE	600 SCALE MAP NO. 48 BLOCK NO.

PLAN AND PROFILE FOR PROPOSED WATER

BALTIMORE WASHINGTON INDUSTRIAL PARK
 PROPOSED OFFICE AND WAREHOUSE
 BLOCK 'C' HOWARD COUNTY, MARYLAND
 PARCEL 'G' ELECTION DISTRICT #6
 CONTRACT NO. - 24-1106-D

SCALE 1"=50'
 SHEET 1 OF 2

