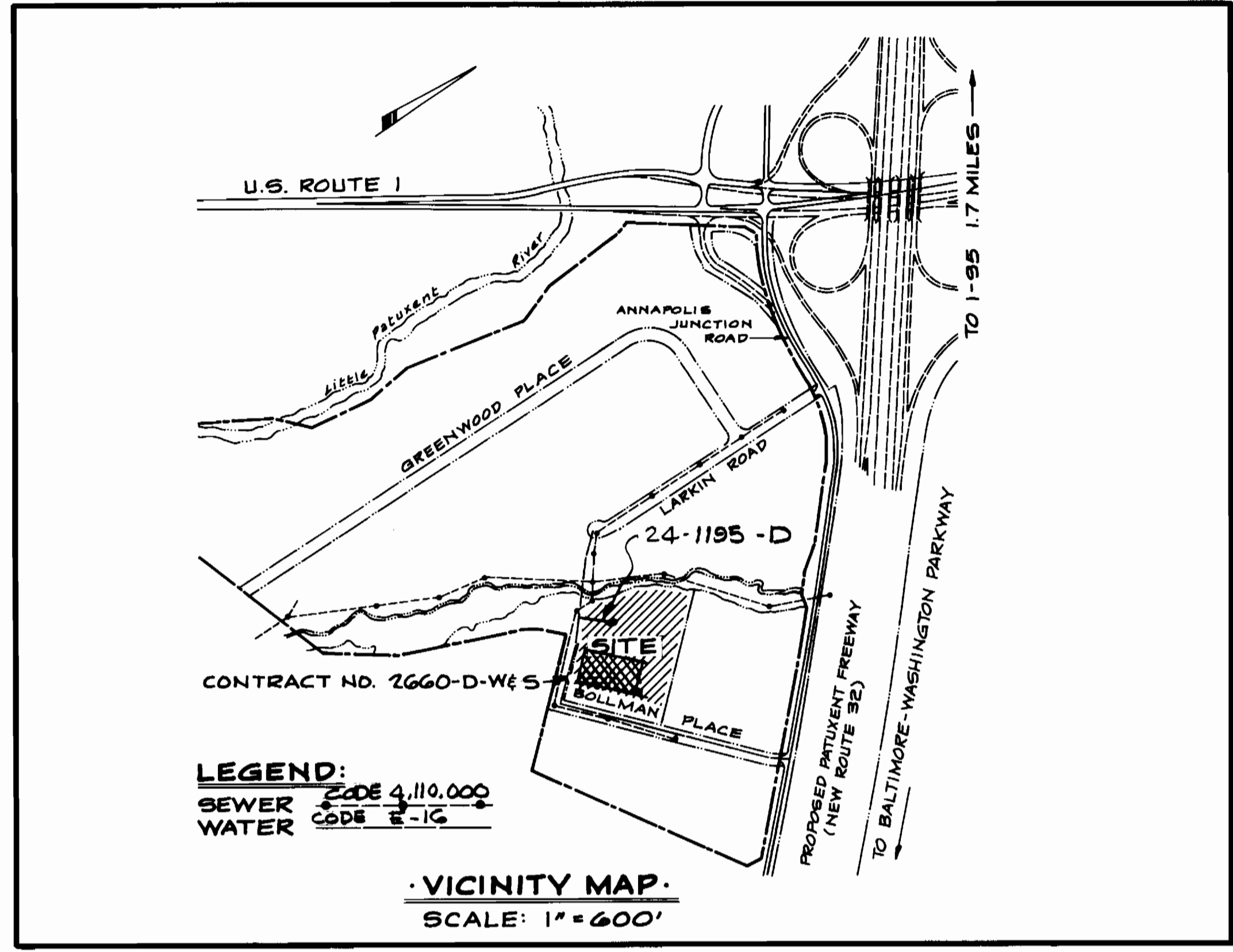
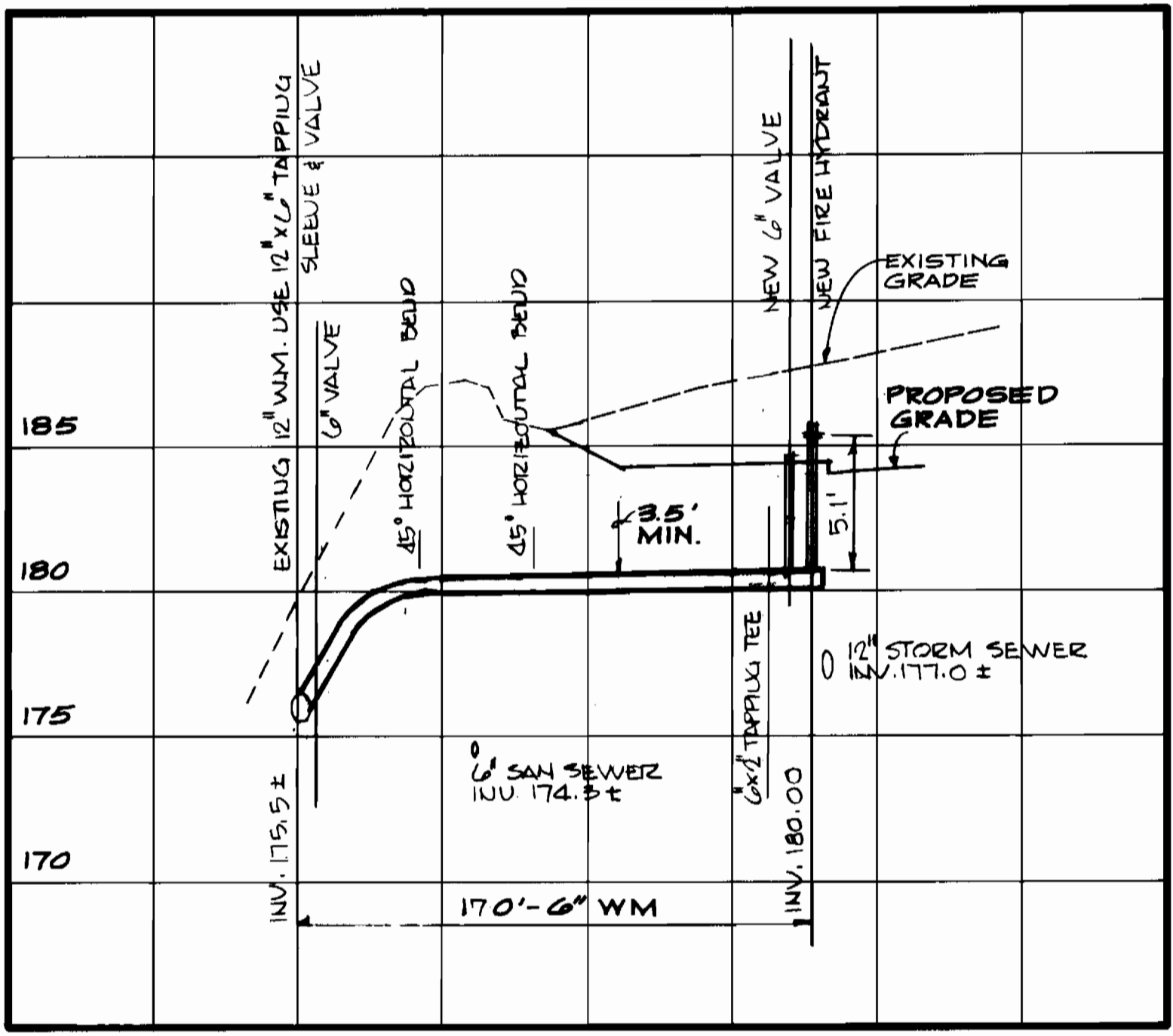


- GENERAL NOTES:**
- APPROXIMATE LOCATION OF EXISTING MAINS ARE SHOWN THE CONTRACTOR SHALL TAKE ALL NECESSARY PRECAUTIONS TO PROTECT EXISTING MAINS AND SERVICES AND MAINTAIN UNINTERRUPTED SUPPLY ANY DAMAGE INCURRED SHALL BE REPAIRED IMMEDIATELY.
 - ALL PIPE ELEVATIONS SHOWN ARE INVERT ELEVATIONS.
 - THE CONTRACTOR SHALL LOCATE EXISTING UTILITIES A MINIMUM OF TWO WEEKS IN ADVANCE OF CONSTRUCTION OPERATIONS IN VICINITY OF UTILITIES THE CONTRACTOR SHALL NOTIFY THE FOLLOWING UTILITIES AT LEAST THREE DAYS BEFORE STARTING WORK SHOWN ON THIS DRAWING:
 C & P TELEPHONE SYSTEM 725-9976, MISS UTILITY LONG DISTANCE CABLE DIVISION 393-3553 1-559-0100
 BALTIMORE GAS AND ELECTRIC CO. 539-8000
 BUREAU OF UTILITIES 992-2366
 - ALL HORIZONTAL AND VERTICAL CONTROLS ARE BASED ON MARYLAND STATE DATUM.
 - CLEAR ALL UTILITIES BY A MINIMUM OF 12".
 - BLOCK ALL FITTINGS WITH CONCRETE. SEE HOWARD COUNTY STANDARDS.
 - ALL WATER MAINS SHALL HAVE A MINIMUM 3.5' COVER.
 - ALL WATER MAINS SHALL BE DUCTILE IRON UNLESS OTHERWISE NOTED.
 - ALL VALVES SHALL BE STRAPPED AND BUTTRESSED IN ACCORDANCE WITH THE STANDARD DETAILS.
 - ALL FIRE HYDRANTS SHALL BE STRAPPED AND BUTTRESSED IN ACCORDANCE WITH STANDARD DETAILS. SOIL AROUND THE HYDRANTS SHALL BE COMPACTED IN ACCORDANCE WITH SECTION 31-07 & 37-05 OF THE STANDARD SPECIFICATIONS.
 - PAYMENTS FOR STRAPPED FIRE HYDRANTS AND VALVES WILL BE INCLUDED IN UNIT PRICE BID FOR FURNISHING AND LAYING WATER MAINS.
 - BURY LINE ELEVATIONS ON FIRE HYDRANTS SHALL BE SET TO THE ELEVATIONS ON THE STANDARDS.
 - PROPERTY LINE AND TOPOGRAPHICAL SURVEY BY JUSTIN BROCKENBROUGH AND ASSOCIATES CHESTER, VIRGINIA, DATED AUGUST 1983.
 - FOR ALL COPPER HOUSE CONNECTIONS, UTILIZE FLARED TYPE FITTINGS ONLY.
 - ALL WATER HOUSE CONNECTIONS SHALL BE INSIDE METER SETTING.



QUANTITIES

ITEM	UNIT	BID	AS BUILT	MATERIAL / SUPPLIER
6" 45° BENDS	EA	2	2	A & P SUPPLY M.J.
2" 11 1/4° BEND	EA	1	—	NOT USED
2" 22 1/2° BEND	EA	1	—	"
6" x 2" TAPPING TEE	EA	1	1	A & P SUPPLY M.J.
6" WATER	LF	170	170	ATLANTIC STATES A & P
1 1/2" x 6" TAPPING SLEEVE & VALVE	EA	1	1	A & P SUPPLY M.J.
6" VALVE & BOX	EA	2	2	A & P SUPPLY M.J.
FIRE HYDRANT	EA	1	1	MUELLER Co. A & P SUPPLY
SAN. MANHOLE	EA	1	1	ATLANTIC PRECAST
8" SEWER LINE	L.F.	10'	10'	A & P SUPPLY C-T



WATER LINE PROFILE.
 SCALE: HORIZ. 1" = 50'
 VERT. 1" = 5'

Sediment Control Measures for this Contract will be implemented in accordance with Article 15 of the Standard Specifications, and SDP 84-86

REVIEWED FOR HOWARD SOIL CONSERVATION DISTRICT AND MEETS TECHNICAL REQUIREMENT
 SIGNATURE: *James A. Whitt*
 DATE: 2-21-84



OWNER & DEVELOPER:
 LINGERFELT-CONTINENTAL ASSOCIATES
 C/O MR. ALAN T. LINGERFELT, PRESIDENT
 P.O. BOX 8570
 RICHMOND, VIRGINIA 23226
 PHONE: 1-804-285-0331

CORRIDOR INDUSTRIAL PARK SECTION 2 PARCELS "A" THRU "E" PLAT NO 5063.

THIS DEVELOPMENT PLAN IS APPROVED FOR SOIL EROSION AND SEDIMENT CONTROL BY THE HOWARD SOIL CONSERVATION DISTRICT.
 APPROVED: *Howard S.C.D.*
 DATE: 2-21-84

I. FELDMAN'S DISTRIBUTION WAREHOUSE
 CORRIDOR INDUSTRIAL PARK
 PARCEL "B" SECTION 2
 CONTRACT NO. 24-1195-D
 Rev. 3-22-84 Per D.P.W. Comments 3-22-84

AUSTIN BROCKENBROUGH AND ASSOCIATES CONSULTING ENGINEERS CHESTER, VIRGINIA P.O. BOX 4800	DEPARTMENT OF PUBLIC WORKS HOWARD COUNTY, MARYLAND Director of Public Works: <i>Robert M. Bevington</i> 2-16-84 Chief - Bureau of Utilities: <i>Robert M. Bevington</i> 2-16-84 Chief - Land Development Division: <i>Robert M. Bevington</i> 2-16-84	CONTRACT NO. 24-1195-D	PLAN AND PROFILE OF WATER LINE	COLUMBIA CORRIDOR INDUSTRIAL PARK ELECTION DISTRICT - HOWARD COUNTY NO. 6	DRAWING: NO. 1 OF 1 SCALE: AS SHOWN	2-6-84 REVISED 2-10-84 REVISED 3-22-84
	APPROVED FOR HOWARD SOIL CONSERVATION DISTRICT AND MEETS TECHNICAL REQUIREMENT			AS-BUILT NOVEMBER 20, 1984		