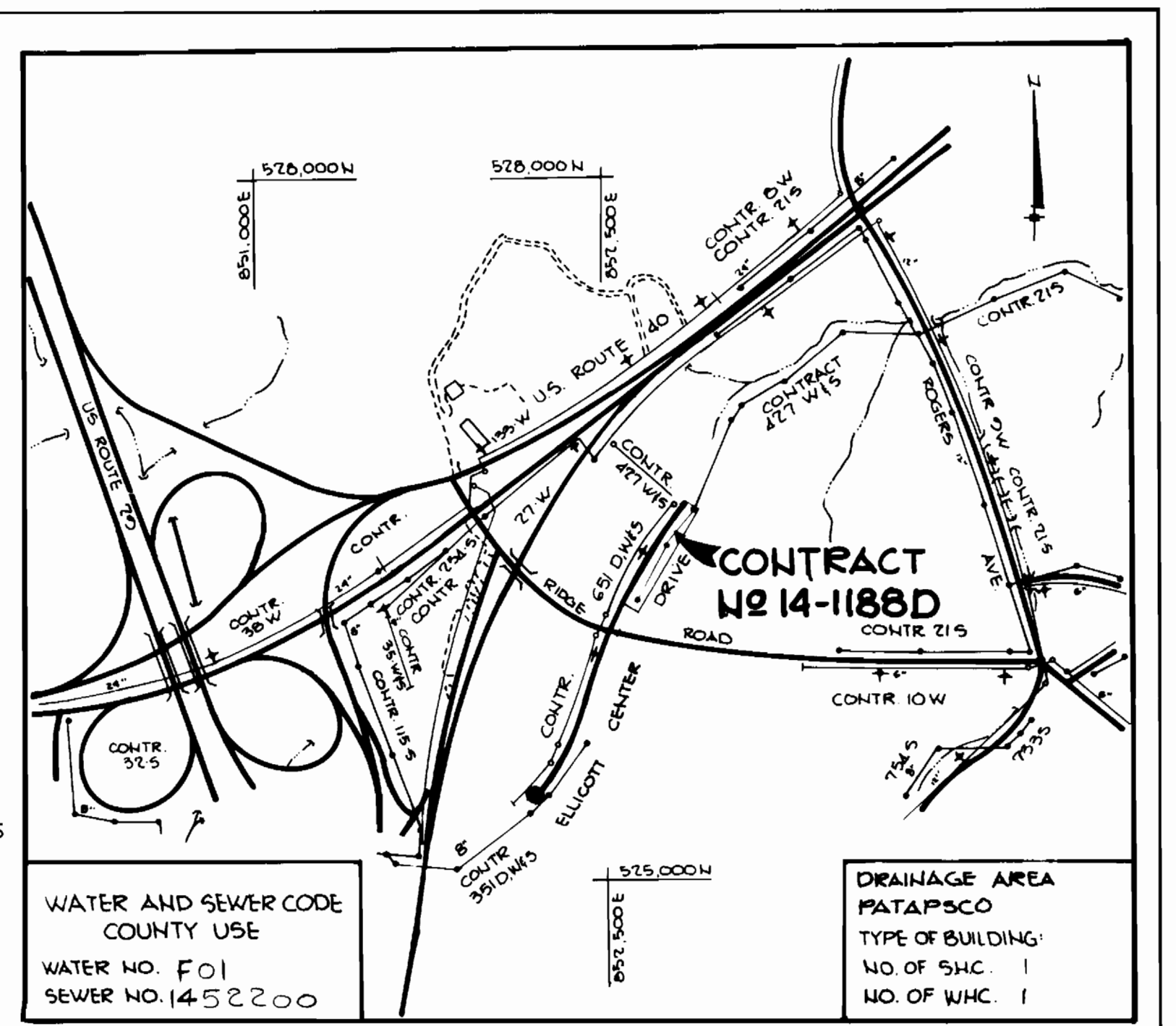


PLAN
Scale 1"=50'



VICINITY MAP
SCALE 1"=600'

BENCH MARKS

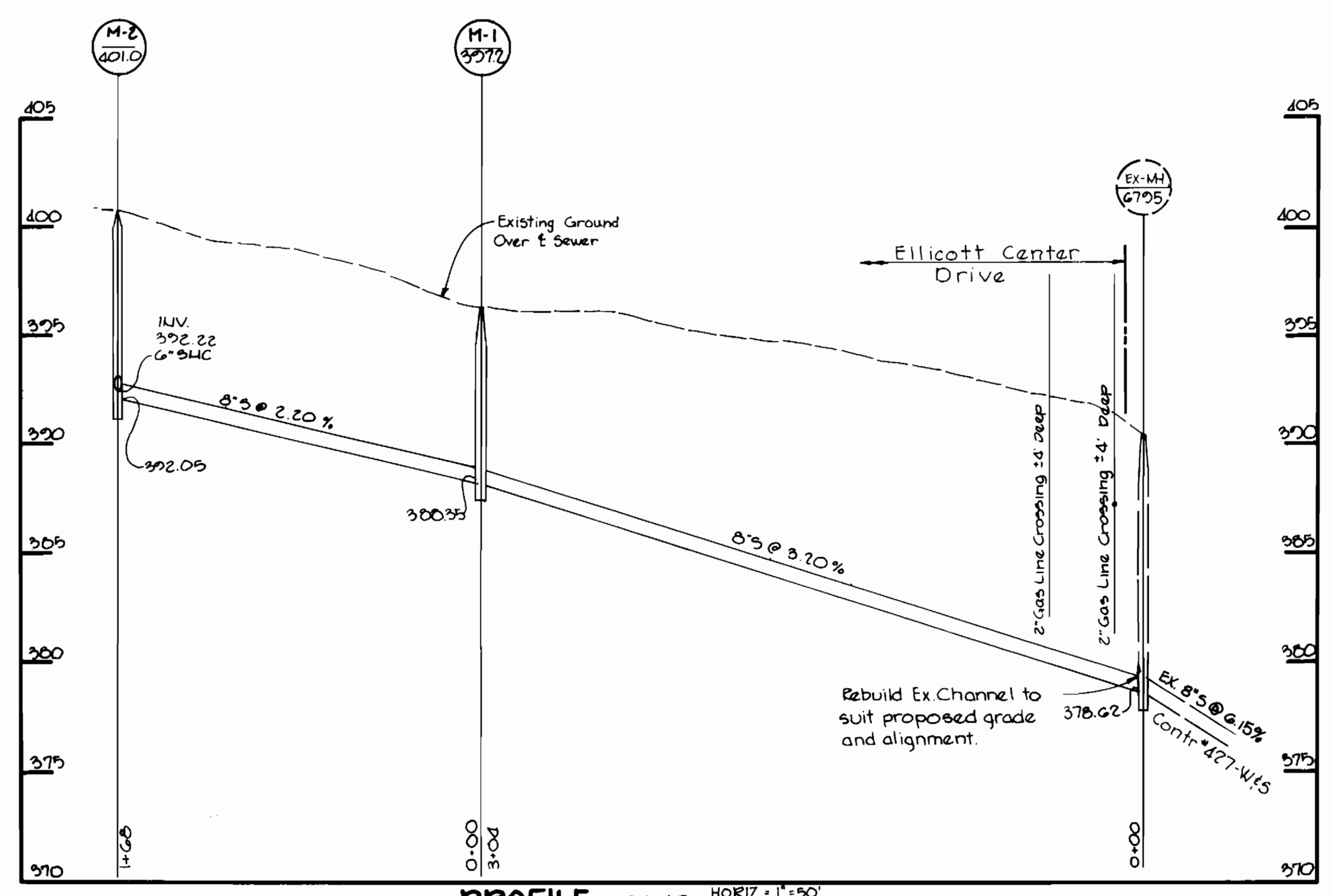
BM #1	½ OF GRADE AT FACE OF CURB ON NORTH SIDE OF ELLICOTT CENTER DRIVE 240' FROM E RIDGE ROAD	ELEV. 399.05
BM #2	½ OF GRADE AT FACE OF CURB ON SOUTH SIDE OF ELLICOTT CENTER DRIVE 243' FROM E RIDGE ROAD	ELEV. 400.18

WATER AND SEWER CODE	COUNTY USE
WATER NO. F01	SEWER NO. 14-52200
DRAINAGE AREA	PATAPSCO
TYPE OF BUILDING	NO OF SHC. 1
	NO OF WHC. 1

GENERAL NOTES

- Approximate location of existing mains are shown. The contractor shall take all necessary precautions to protect existing mains and services and maintain uninterrupted supply. Any damage incurred shall be repaired immediately to the satisfaction of the Engineer, at the Contractor's expense.
- All horizontal controls are based on Maryland State Coordinates.
- All vertical controls are based on U.S.G.S. Datum.
- All pipe elevations shown are invert or elevations.
- Clear all utilities by a minimum of 6'. Clear all poles by 2'-0" minimum or tunnel as required. Any cost incurred to the contractor for tunneling or bracing of poles shall be included in unit priced bid for excavation and backfill.
- For details not shown on the drawings use Howard County Standard Details.
- For materials and construction methods use Howard County Standard Specifications.
- Contractor shall locate existing utilities a minimum of two (2) weeks in advance of construction operations in the vicinity of proposed utilities at his own expense.
- Contractor shall notify the following utilities or agencies at least five (5) working days before starting work shown on these plans.

a. State Highway Administration	531-5533
b. Baltimore Gas & Electric Company	Underground Electric Distribution Customer Service 685-0123
c. Baltimore Gas & Electric Company	Underground Gas Distribution Customer Service 685-0123
d. Engineering - "Damage Control"	734-5621
e. "Miss Utility"	1552-0100
f. Chesapeake & Potomac (CIP) Telephone Company	725-2276
g. American Telephone & Telegraph - Cable Location Division	323-3553
h. Colonial Pipeline Company	781-4641
i. Bureau of Utilities Howard County	292-2366
- Trees are to be protected from damage to maximum extent. Trees located within the construction strip are not to be removed or damaged by the contractor.
- Contractor shall remove trees, stumps and roots along line of excavation as directed by the Engineer. Payment for such removal shall be included in the unit price bid for excavation and backfill.
- Place regulation 'Men Working' and warning signs as required to comply with Maryland State Highway Administration Manual of Traffic Control for Highway Construction and Maintenance Operations.
- All water mains to be D.I.P. unless otherwise noted.
- Top of all water mains to have a minimum of 3 1/2' cover unless otherwise noted.
- Valves adjacent to trees shall be strapped to trees.
- Block all fittings with concrete.
- Bury line elevations on fire hydrants shall be set to the elevation shown on the drawings. All fire hydrants shall be strapped and buttressed with concrete in accordance with standard details. Soil around the fire hydrant to be compacted in accordance with Section 1003 & 1008 of the Standard Specification.
- All water house connections shall be for an inside meter setting.
- The contractor shall not operate any water main valves on the existing system.
- For all copper water house connections utilize flared type fittings only.
- All sewer mains shall be C.S.P.X., V.C.P.X., P.V.C., or A.C.P. Class 2400 unless otherwise noted.
- The contractor shall provide a joint in all sewer mains within 2'-0" of exterior manhole wall.
- All manholes shall be 4'-0" inside diameter, unless otherwise noted.
- Manholes shown with 12" and 16" walls are brick manholes only.
- Manholes designated W.T. in plan and profile shall have watertight frame and covers, Standard Detail G-32. Where watertight manhole frame and cover is used, set top of frame 1'-6" above finished grade.
- House (s) with the symbol 'C.N.S.' indicates the cellar can not be served.
- All water house connections shall have a minimum vertical clearance of 12" above all sanitary sewer crossings.
- All sanitary sewer house connections shall have a minimum vertical clearance of 12" below all water main crossings.
- Profile station shall be adjusted as necessary to conform to Plan dimensions.
- No pipe shall be laid until lines of excavation have been brought to subgrade.



PROFILE SCALE: HORIZ. 1"=50' VERT. 1"=5'

QUANTITIES

ITEM	ESTIMATED	AS BUILT	MATERIAL/SUPPLIER
8" SEWER	472 LF	467 LF	P.V.C./I.T. GRINNEL
MANHOLES	2 EA	2 EA	ATLANTIC PRECAST
6" WNC	*	10 LF	P.V.C./I.T. GRINNEL
6" SHC	*	10 LF	P.V.C./I.T. GRINNEL
12" 15 KV	*	1 EA	

* Installed By Ingleside Prior To This Contract

Contract No. 14-1188-D

SEDIMENT CONTROL MEASURES FOR THIS CONTRACT WILL BE IMPLEMENTED IN ACCORDANCE WITH ARTICLE 15 OF THE SPECIFICATIONS.

HOWARD SOIL CONSERVATION DISTRICT REVIEWED FOR HOWARD SOIL CONSERVATION DISTRICT AND MEETS TECHNICAL REQUIREMENTS
Michelle Kelly 6-11-84 DATE

US SOIL CONSERVATION SERVICE THIS PLAN IS APPROVED FOR SOIL EROSION AND SEDIMENT CONTROL BY THE HOWARD SOIL CONSERVATION DISTRICT.
Robert W. Zimm 6-11-84 DATE
HOWARD SOIL CONSERVATION DISTRICT

DEPARTMENT OF PUBLIC WORKS
HOWARD COUNTY, MARYLAND

James F. Norman 6-11-84 DATE
DIRECTOR OF PUBLIC WORKS

Robert W. Zimm 6-11-84 DATE
CHIEF BUREAU OF UTILITIES

Arthur E. Muegge 6-11-84 DATE
CHIEF BUREAU OF ENGINEERING

Arthur E. Muegge 6-11-84 DATE
CHIEF LAND DEVELOPMENT DIVISION

THE RIEMER GROUP, INC.
8659 BALTIMORE NATIONAL PIKE
ELLICOTT CITY, MARYLAND 21043

Arthur E. Muegge DATE
ARTHUR E. MUEGGE

DES: VLS	
DRN: DAM	
CHK:	
PERK I	RELOCATE SEWER LINE & BASEMENT. 4-30-84
BY NO.	REVISION
DATE: 1/19/84	DATE

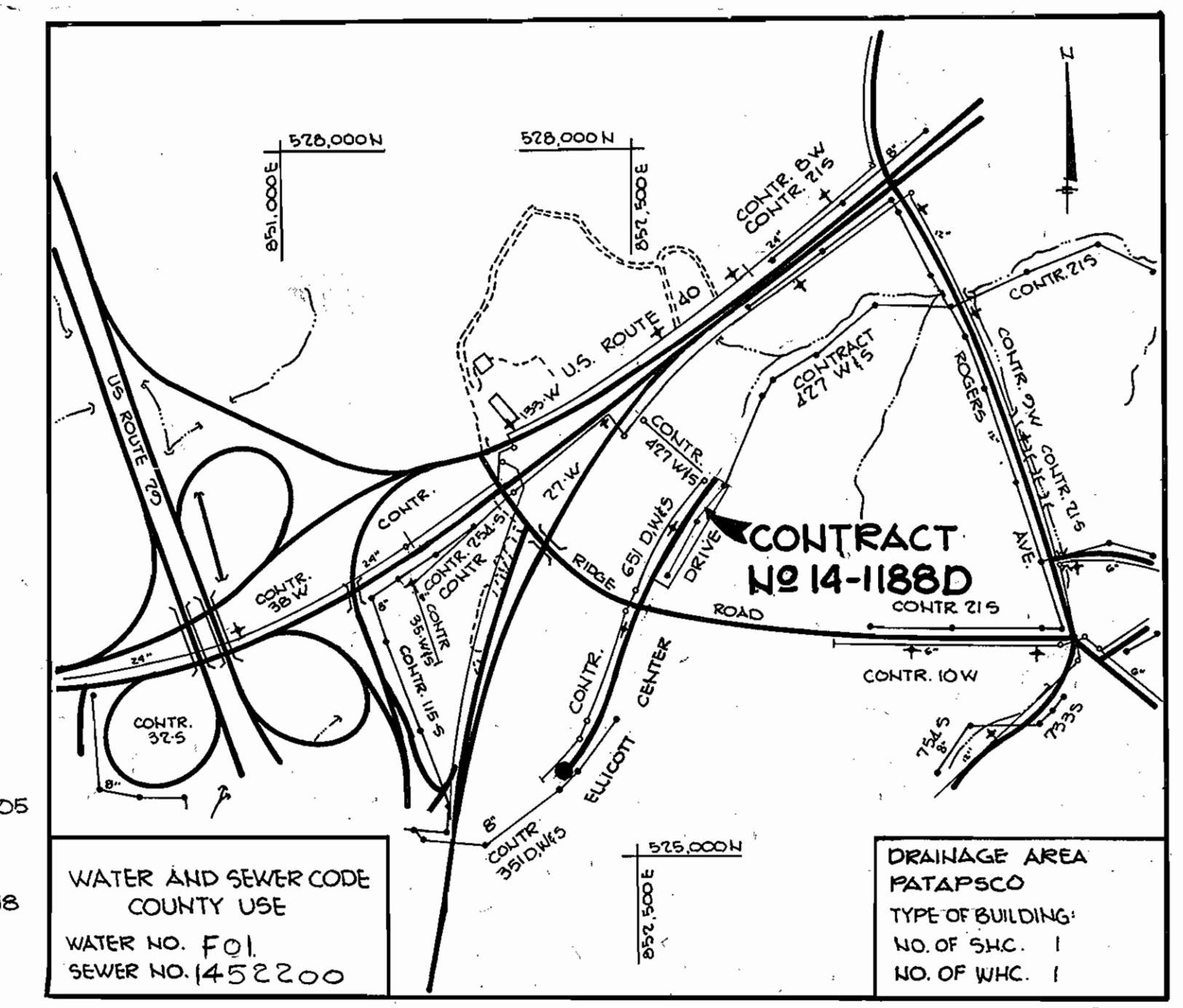
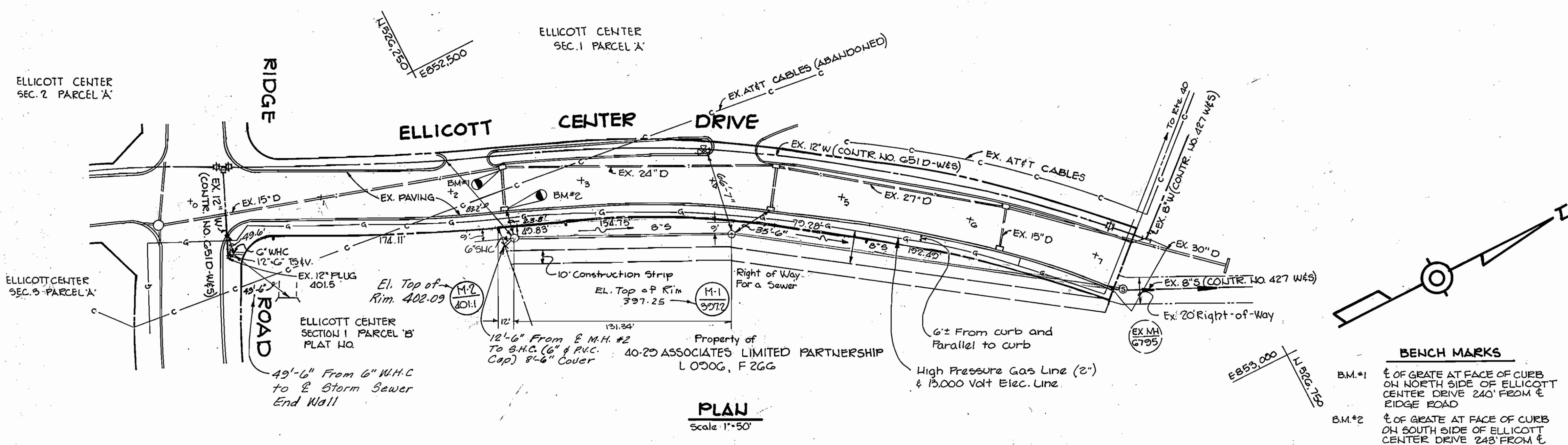
PLAN AND PROFILE
OF A WATER & SEWER MAINS

600' SCALE MAP NO. 24 BLOCK NO.

ELLICOTT CENTER
SECTION I PARCEL B
CONTRACT NO. 14-1188-D
2ND ELECTION DISTRICT
HOWARD COUNTY, MARYLAND

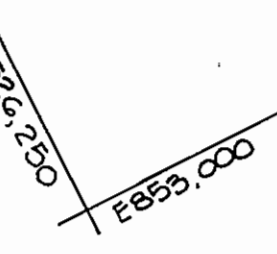
SCALE AS SHOWN
SHEET 1 OF 1

AS BUILT - 9/25/85



BENCH MARKS

B.M.#1	£ OF GRATE AT FACE OF CURB ON NORTH SIDE OF ELLICOTT CENTER DRIVE 240' FROM £ RIDGE ROAD	ELEV. 399.05
B.M.#2	£ OF GRATE AT FACE OF CURB ON SOUTH SIDE OF ELLICOTT CENTER DRIVE 243' FROM £ RIDGE ROAD	ELEV. 400.18



PLAN
Scale: 1"=50'

VICINITY MAP
SCALE: 1"=600'

GENERAL NOTES

- Approximate location of existing mains are shown. The contractor shall take all necessary precautions to protect existing mains and services and maintain uninterrupted supply. Any damage incurred shall be repaired immediately to the satisfaction of the Engineer at the Contractor's expense.
- All horizontal controls are based on Maryland State Coordinates.
- All vertical controls are based on U.S.G.S. Datum.
- All pipe elevations shown are invert elevations.
- Clear all utilities by a minimum of 6'. Clear all poles by 7'-0" minimum or tunnel as required. Any cost incurred to the contractor for tunneling or bracing at poles shall be included in unit priced bid for excavation and backfill.
- For details not shown on the drawings use Howard County Standard Details.
- For materials and construction methods use Howard County Standard Specifications.
- Contractor shall locate existing utilities a minimum of two (2) weeks in advance of construction operations in the vicinity of proposed utilities at his own expense.
- Contractor shall notify the following utilities or agencies at least five (5) working days before starting work shown on these plans.

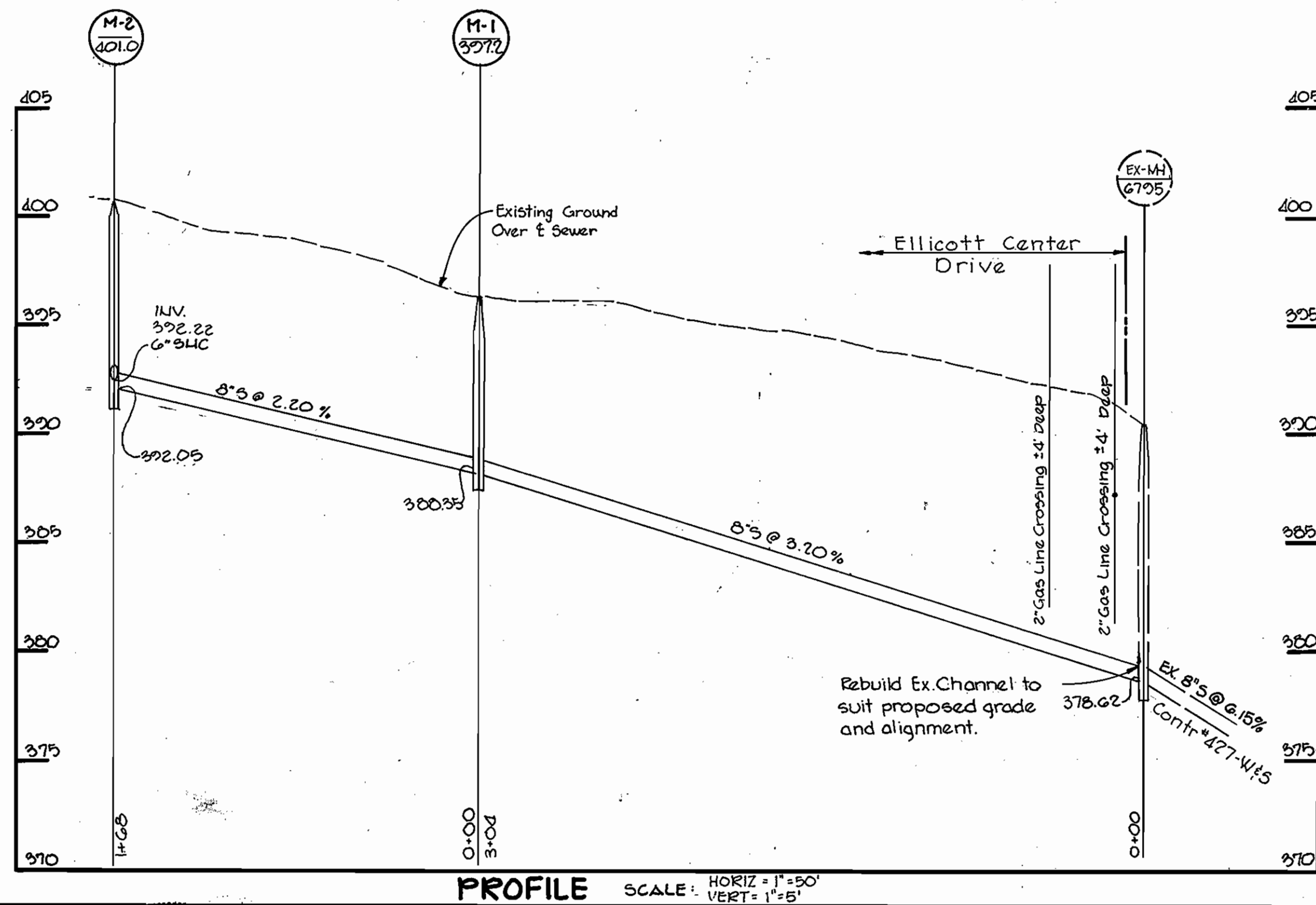
a. State Highway Administration	531-5533
b. Baltimore Gas & Electric Company Underground Electric Distribution Customer Service	685-0123
c. Baltimore Gas & Electric Company Underground Gas Distribution Customer Service	685-0123
d. Engineering - "Damage Control"	734-5621
e. "Miss Utility"	1552-0100
f. Chesapeake & Potomac (C&P) Telephone Company	725-2276
g. American Telephone & Telegraph - Cable Location Division	323-3553
h. Colonial Pipeline Company	781-4641
i. Bureau of Utilities Howard County	202-2366
- Trees are to be protected from damage to maximum extent. Trees located within the construction strip are not to be removed or damaged by the contractor.
- Contractor shall remove trees, stumps and roots along line of excavation as directed by the Engineer. Payment for such removal shall be included in the unit price bid for excavation and backfill.
- Place regulation 'Men Working' and warning signs as required to comply with Maryland State Highway Administration Manual of Traffic Control for Highway Construction and Maintenance Operations.
- All water mains to be D.I.P. unless otherwise noted.
- Top of all water mains to have a minimum of 3 1/2' cover unless otherwise noted.
- Valves adjacent to trees shall be strapped to trees.
- Block all fittings with concrete.
- Bury line elevations on fire hydrants shall be set to the elevation shown on the drawings. All fire hydrants shall be strapped and buttressed with concrete in accordance with standard details. Soil around the fire hydrant to be compacted in accordance with Section 1003 §100B of the Standard Specification.
- All water house connections shall be for an inside meter setting.
- The contractor shall not operate any water main valves on the existing system.
- For all copper water house connections utilize flared type fittings only.
- All sewer mains shall be C.S.P.X., V.C.P.X., P.V.C. or A.C.P. Class 2400 unless otherwise noted.
- The contractor shall provide a joint in all sewer mains within 7'-0" of exterior manhole wall.
- All manholes shall be 4'-0" inside diameter, unless otherwise noted.
- Manholes shown with 12" and 16" walls are brick manholes only.
- Manholes designated W.T. in plan and profile shall have watertight frame and covers, Standard Detail G-32. Where watertight manhole frame and cover is used, set top of frame 1'-6" above finished grade.
- House (s) with the symbol 'C.N.S.' indicates the cellar can not be served.
- All water house connections shall have a minimum vertical clearance of 12" above all sanitary sewer crossings.
- All sanitary sewer house connections shall have a minimum vertical clearance of 12" below all water main crossings.
- Profile station shall be adjusted as necessary to conform to Plan dimensions.
- No pipe shall be laid until lines of excavation have been brought to subgrade.

QUANTITIES

ITEM	ESTIMATED	AS BUILT	MATERIAL/SUPPLIER
8" SEWER	470 L.F.	467 L.F.	P.V.C./I.T.T. GRINNEL
MANHOLES	7 EA.	2 EA.	ATLANTIC PRECAST
6" W.H.C.	*	19 L.F.	P.V.C./I.T.T. GRINNEL
6" S.H.C.	*	10 L.F.	P.V.C./I.T.T. GRINNEL
12" C.I.S.V.	*	1 EA.	

* Installed By Ingleside Prior To This Contract

Contract No. 14-1188-D



PROFILE SCALE: HORIZ: 1"=50' VERT: 1"=5'

SEDIMENT CONTROL MEASURES FOR THIS CONTRACT WILL BE IMPLEMENTED IN ACCORDANCE WITH ARTICLE 15 OF THE SPECIFICATIONS.

HOWARD SOIL CONSERVATION DISTRICT REVIEWED FOR HOWARD SOIL CONSERVATION DISTRICT AND MEETS TECHNICAL REQUIREMENTS.
 DATE: 6-11-84
 U.S. SOIL CONSERVATION SERVICE
 THIS PLAN IS APPROVED FOR SOIL EROSION AND SEDIMENT CONTROL BY THE HOWARD SOIL CONSERVATION DISTRICT.
 DATE: 6-11-84

DEPARTMENT OF PUBLIC WORKS
HOWARD COUNTY, MARYLAND

John F. Nemer
DIRECTOR OF PUBLIC WORKS
DATE: 6-15-84

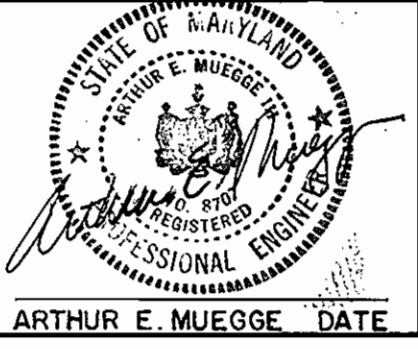
Robert W. Zickler
CHIEF BUREAU OF UTILITIES
DATE: 6-14-84

Arthur E. Muegge
CHIEF BUREAU OF ENGINEERING
DATE: 6-15-84

Charles J. ...
CHIEF LAND DEVELOPMENT DIVISION
DATE: 6-15-84

THE RIEMER GROUP, INC.
8659 BALTIMORE NATIONAL PIKE
ELLICOTT CITY, MARYLAND 21043

Arthur E. Muegge
PROFESSIONAL ENGINEER
DATE: 1/19/84



DES: VLS			
DRN: DAM			
CHK:			
DATE: 1/19/84			
BY NO.			
REVISION			
DATE			

PLAN AND PROFILE OF A WATER & SEWER MAINS

600' SCALE MAP NO. 24 BLOCK NO. _____

ELLICOTT CENTER
SECTION 1 PARCEL B
CONTRACT NO. 14-1188-D
2ND ELECTION DISTRICT
HOWARD COUNTY, MARYLAND

SCALE AS SHOWN

SHEET 1 OF 1

AS BUILT - 9/25/85