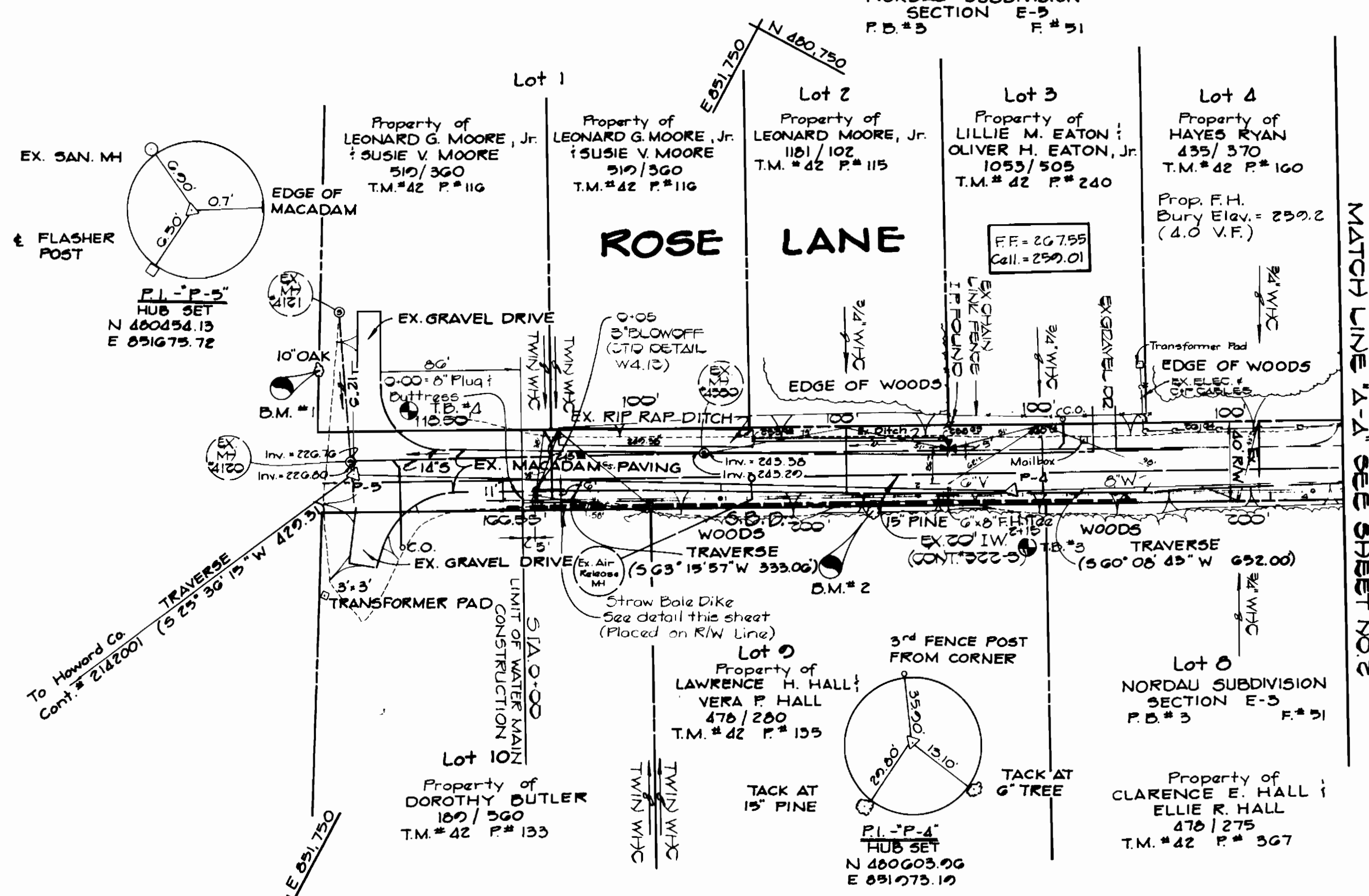


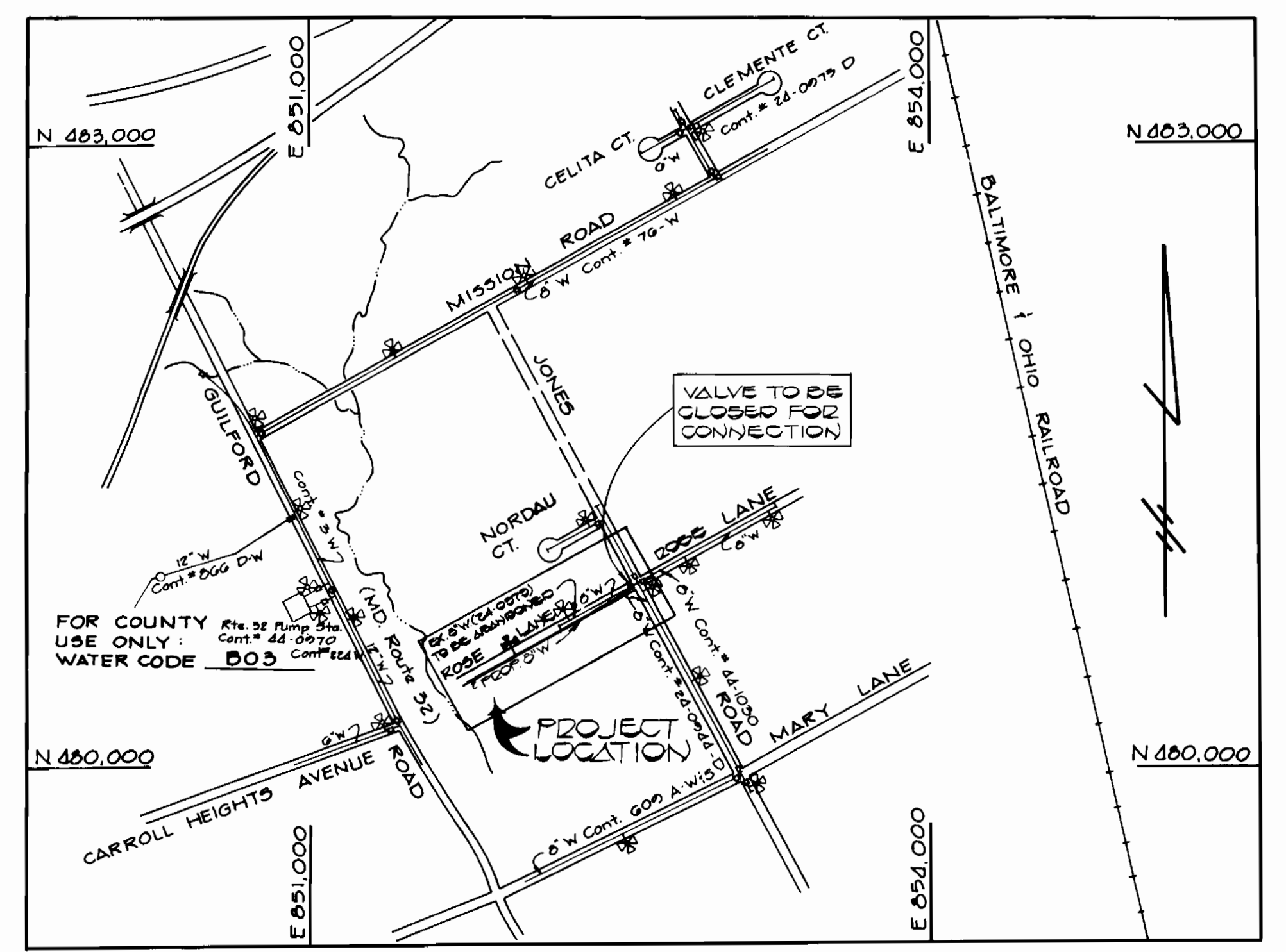
**BENCH MARKS**

D.M.#1 ELEV. 250.71  
RAILROAD SPIKE AT BASE OF 10" OAK.  
D.M.#2 ELEV. 250.04  
RAILROAD SPIKE AT BASE OF 15" PINE.

NORDAU SUBDIVISION  
SECTION E-5  
P.D.#5 F.#51



**PLAN**  
1"=50'

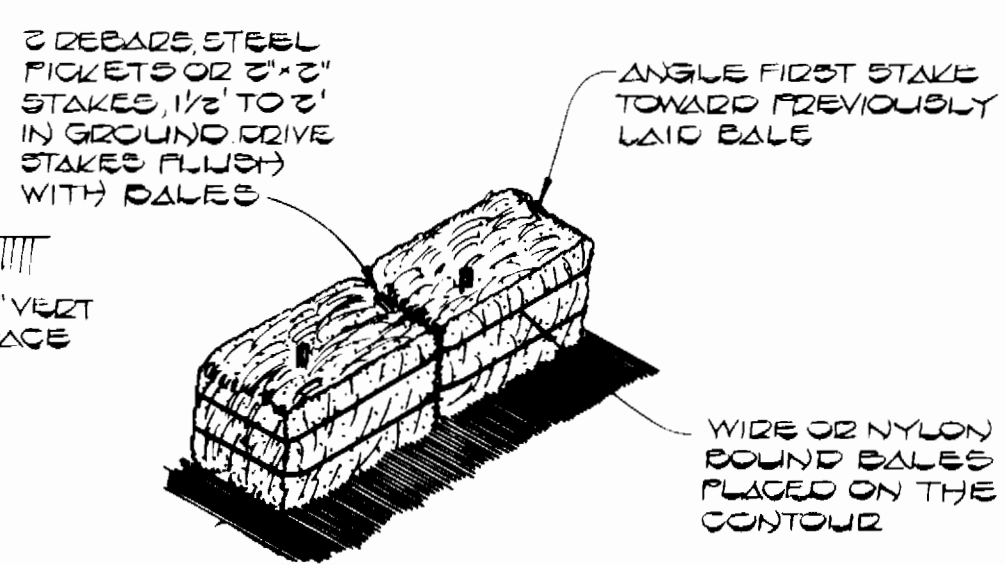


**VICINITY MAP**  
SCALE 1" = 600'

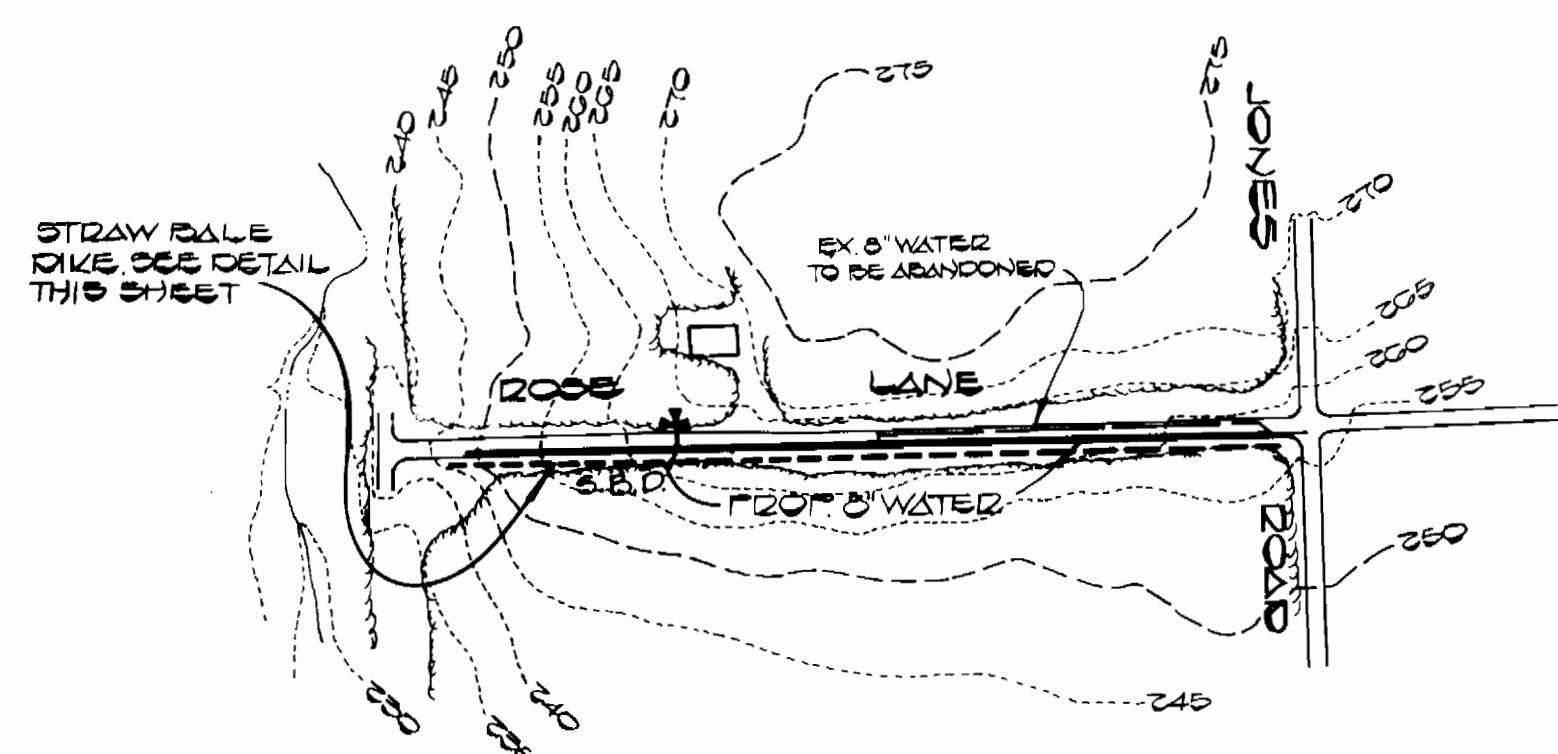
TYPE OF BUILDINGS: RESIDENTIAL  
NUMBER OF PARCELS: 2  
NUMBER OF WATER HOUSE CONNS.: 2  
DRAINAGE AREA: 1.11 AC

**GENERAL NOTES**

- APPROXIMATE LOCATIONS OF EXISTING MAINS ARE SHOWN. THE CONTRACTOR SHALL TAKE ALL NECESSARY PRECAUTIONS TO PROTECT EXISTING MAINS AND SERVICES AND MAINTAIN UNINTERRUPTED SUPPLY. ANY DAMAGE INCURRED SHALL BE REPAIRED IMMEDIATELY TO THE SATISFACTION OF THE ENGINEER, AT THE CONTRACTOR'S EXPENSE.
- ALL HORIZONTAL CONTROLS ARE BASED ON MARYLAND STATE COORDINATES.
- ALL VERTICAL CONTROLS ARE BASED ON U.S.G.S. DATUM.
- ALL PIPE ELEVATIONS SHOWN ARE INVERT ELEVATIONS.
- CLEAR ALL UTILITIES BY A MINIMUM OF 6'. CLEAR ALL POLES BY 2'-0" MINIMUM OR TUNNEL AS REQUIRED. THE OWNER HAS CONTACTED THE UTILITIES COMPANIES AND HAS MADE ARRANGEMENTS FOR BRACING OF POLES AS SHOWN ON THE DRAWINGS. IN THE EVENT THE CONTRACTOR'S WORK REQUIRES THE BRACING OF ADDITIONAL POLES, ANY COST INCURRED BY THE OWNER FOR THE BRACING OF ADDITIONAL POLES OR DAMAGES SHALL BE DEDUCTED FROM MONEY OWED TO THE CONTRACTOR. THE CONTRACTOR SHALL COORDINATE WITH THE UTILITY COMPANIES TO SCHEDULE THE BRACING OF THE POLES.
- CONTRACTOR SHALL NOTIFY THE FOLLOWING AGENCIES AT LEAST FIVE (5) WORKING DAYS BEFORE STARTING WORK SHOWN ON THESE PLANS:  
BALTIMORE GAS AND ELECTRIC CO. - CONTRACTOR SERVICES - 561-2585  
BALTIMORE GAS AND ELECTRIC CO. - UNDERGROUND DAMAGE CONTROL - 234-5621  
BALTIMORE GAS AND ELECTRIC CO. TROUBLE SHOOTING - 298-9013  
MISS UTILITY - 1-559-0100  
BUREAU OF UTILITIES, HOWARD COUNTY DEPARTMENT OF PUBLIC WORKS - 992-2366
- FOR DETAILS NOT SHOWN ON THE DRAWINGS, AND FOR MATERIALS AND CONSTRUCTION METHODS, USE HOWARD COUNTY DESIGN MANUAL VOLUME IV, STANDARD SPECIFICATIONS AND DETAILS FOR CONSTRUCTION. THE CONTRACTOR SHALL HAVE A COPY OF VOLUME IV ON THE JOB.
- CONTRACTOR SHALL REMOVE TREES, STUMPS AND ROOTS ALONG THE LINE OF EXCAVATION. PAYMENT FOR SUCH REMOVAL SHALL BE INCLUDED IN THE UNIT PRICE BID FOR CONSTRUCTION OF THE MAIN.
- ALL FITTINGS SHALL BE BUTTRESSED OR ANCHORED WITH CONCRETE IN ACCORDANCE WITH THE STANDARD DETAILS UNLESS OTHERWISE PROVIDED FOR ON THE DRAWINGS.
- ALL WATER MAINS TO BE D.I.P. UNLESS OTHERWISE NOTED.
- TOP OF WATER MAINS TO HAVE A MINIMUM OF 3'-6" COVER UNLESS OTHERWISE NOTED.
- VALVES ADJACENT TO TEES SHALL BE STRAPPED TO TEES.
- FIRE HYDRANTS SHALL BE SET TO THE BURY LINE ELEVATIONS SHOWN ON THE DRAWINGS. ALL FIRE HYDRANTS SHALL BE STRAPPED AND BUTTRESSED WITH CONCRETE IN ACCORDANCE WITH STANDARD DETAILS. SOIL AROUND THE FIRE HYDRANTS SHALL BE COMPACTED IN ACCORDANCE WITH SECTION 1003 OF THE STANDARD SPECIFICATIONS.
- THE CONTRACTOR SHALL NOT OPERATE ANY WATER MAIN VALVES ON THE EXISTING WATER SYSTEM.
- WHERE TEST PITS HAVE BEEN MADE ON EXISTING UTILITIES, THEY ARE NOTED BY THE SYMBOL AT THE LOCATION OF THE TEST PIT. A NOTE OR NOTES CONTAINING THE RESULTS OF THE TEST PIT OR PITS IS INCLUDED ON THE DRAWINGS. EXISTING UTILITIES IN THE VICINITY OF THE PROPOSED WORK FOR WHICH TEST PITS HAVE NOT BEEN DUG SHALL BE LOCATED BY THE CONTRACTOR TWO WEEKS IN ADVANCE OF CONSTRUCTION OPERATIONS AT HIS OWN EXPENSE.
- TREES AND SHRUBS ARE TO BE PROTECTED FROM DAMAGE TO MAXIMUM EXTENT. TREES AND SHRUBS LOCATED WITHIN THE CONSTRUCTION STRIP ARE NOT TO BE REMOVED OR DAMAGED BY THE CONTRACTOR.



**STRAW BALE DIKE**  
NO SCALE

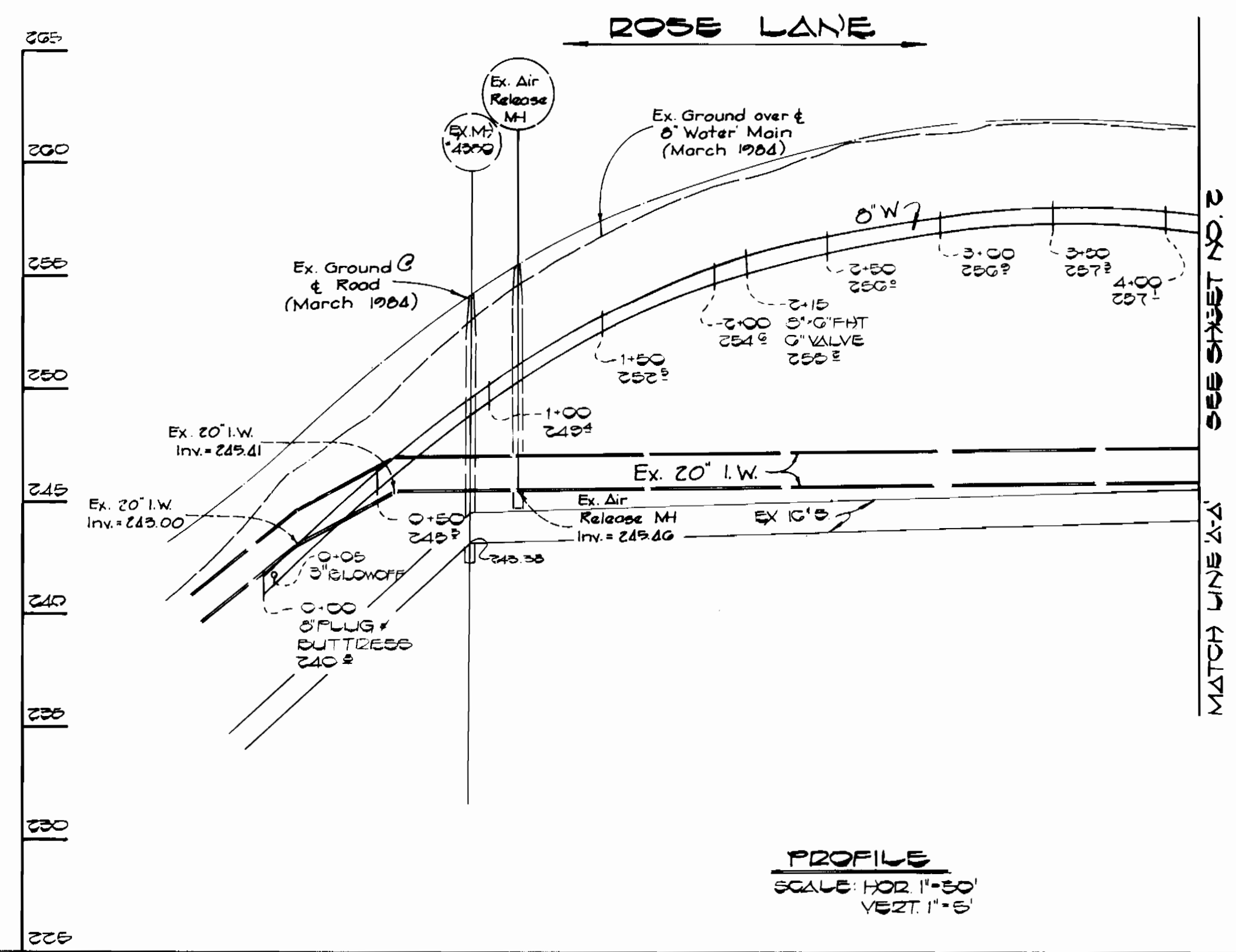


**DRAINAGE AREA MAP**  
SCALE: 1"=300'

SEDIMENT CONTROL MEASURES FOR THIS CONTRACT WILL BE IMPLEMENTED IN ACCORDANCE WITH ARTICLE 15 OF THE HOWARD COUNTY DESIGN MANUAL & STANDARDS & SPECIFICATIONS FOR SOIL EROSION AND SEDIMENT CONTROL IN DEVELOPING AREAS

REVIEWED FOR HOWARD COUNTY SOIL CONSERVATION DISTRICT AND MEETS TECHNICAL REQUIREMENTS  
APPROVED: *[Signature]* 10-17-84  
U.S. SOIL CONSERVATION SERVICE DATE

THIS PLAN IS APPROVED FOR EROSION AND SEDIMENT CONTROL BY THE HOWARD COUNTY SOIL CONSERVATION DISTRICT.  
APPROVED: *[Signature]*  
HOWARD COUNTY SOIL CONSERVATION DISTRICT DATE



**PROFILE**  
SCALE: HOR. 1"=50'  
VERT. 1"=5'

QUANTITIES			
ITEM	EST'D	AS-BUILT	SUPPLIER
8" WATER	338 L.F.	232 L.F./DIP	ATLANTIC
6" WATER	47 L.F.	50 L.F./DIP	A.P. WATER
FIRE HYD.	1 EA.	1	MUELLER/A.P. WATER
34" WHC	138 L.F.	265 L.F.	A.P. WATER
1" WHC	35 L.F.	70 L.F.	A.P. WATER
3" BLOWOFF	1 EA.	1	A.P. WATER

DEPARTMENT OF PUBLIC WORKS HOWARD COUNTY, MARYLAND 10-25-84 DIRECTOR OF PUBLIC WORKS 10-23-84 CHIEF, BUREAU OF UTILITIES	FISHER, COLLINS & CARTER, INC. CONSULTING ENGINEERS AND LAND SURVEYORS 8388 COURT AVENUE ELLICOTT CITY, MARYLAND 21043 TELEPHONE: (301) 461-2855 TERRELL A. FISHER *0797	DES: D.B.S.				ROSE LANE PART III CAPITAL PROJECT W-8684 CONTRACT NO. 44-1186 SIXTH ELECTION DISTRICT HOWARD COUNTY, MARYLAND	SCALE AS SHOWN SHEET 1 OF 2
		DRN: D.B.S.	CHK: T.A.F.	DATE: 3-15-84	BY: NO.		

