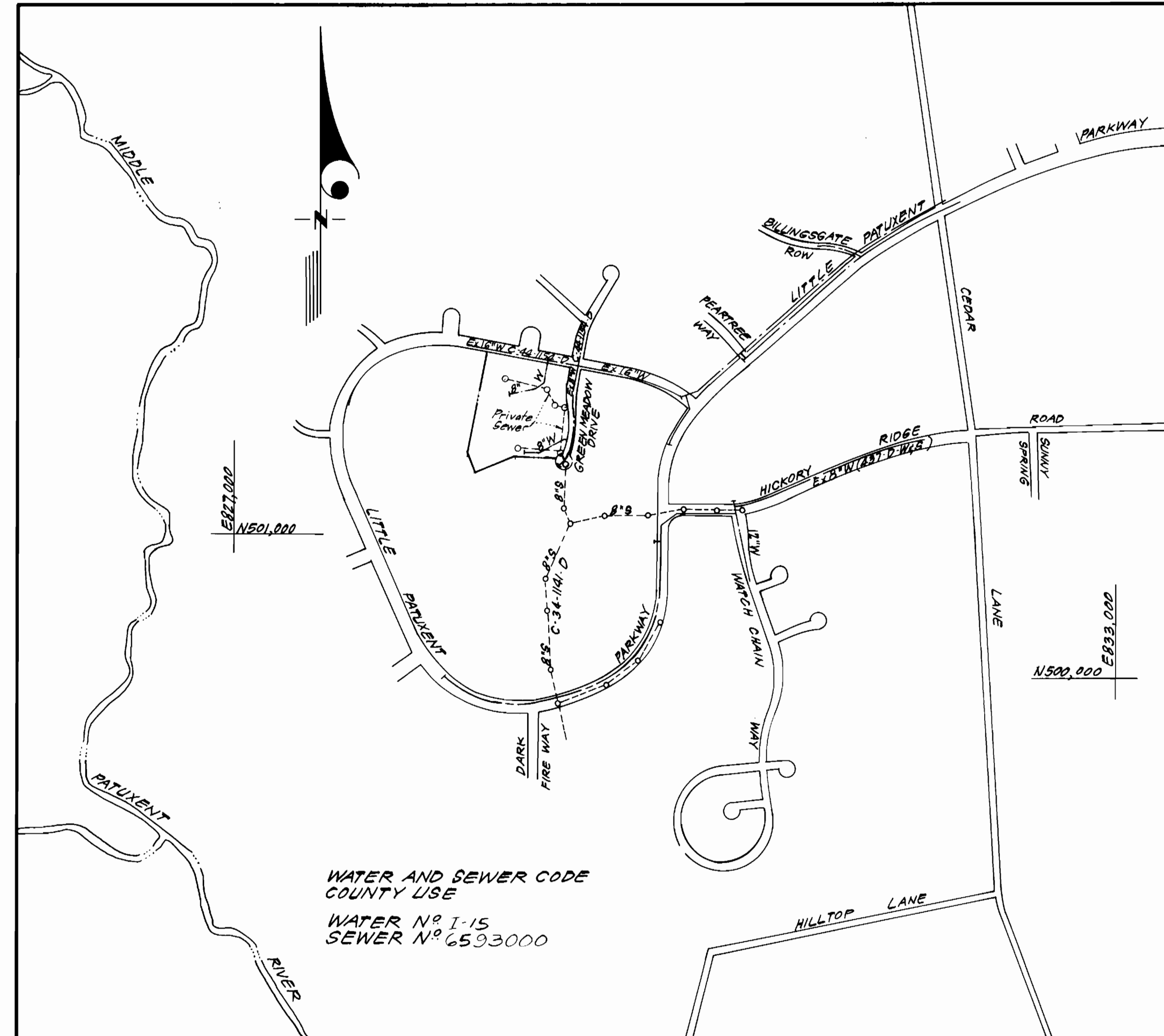


TYPE OF BUILDING	Apartments
NUMBER OF UNITS	126
NUMBER OF WHC	8
DRAINAGE AREA	Middle Patuxent



VICINITY MAP

GENERAL NOTES

- Approximate location of existing mains are shown. The contractor shall take all necessary precautions to protect existing mains and services and maintain uninterrupted supply. Any damage incurred shall be repaired immediately to the satisfaction of the Inspector, at the contractor's expense.
- All horizontal controls are based on Maryland State Coordinates.
- All vertical controls are based on U.S.G.S. Datum.
- All pipe elevations shown are invert elevations.
- Clear all utilities by a minimum of 6" clear all poles by 2'-0" minimum or tunnel as required. Any cost incurred to the contractor for tunneling or bracing at poles shall be included in unit prices bid for excavation and backfill.
- For details not shown on the drawings use Howard County Standard Details.
- For materials and construction methods use Howard County Standard Specifications.
- Contractor shall locate existing utilities a minimum of two (2) weeks in advance of construction operations in the vicinity of proposed utilities at his own expense.
- Contractor shall notify the following utilities or agencies at least five (5) working days before starting work shown on these plans.
 - State Highway Administration - 531-5533
 - Baltimore Gas & Electric Company - Underground Electric Distribution Customer Service - 685-0123
 - Baltimore Gas & Electric Company - Underground Gas Distribution Customer Service - 685-0123
 - Engineering - Damage Control - 234-5621
 - Miss Utility - 1-559-0100
 - Chesapeake & Potomac (C & P) Telephone Company - 725-9976
 - American Telephone and Telegraph - Cable Location Division - 393-3553
 - Colonial Pipeline Company - 781-4641
 - Bureau of Utilities Howard County - 992-2366
- Trees are to be protected from damage to maximum extent. Trees located within the construction strip are not to be removed or damaged by the contractor.
- Contractor shall remove trees, stumps, and roots along line of excavation as directed by the Inspector. Payment for such removal shall be included in the unit price bid for excavation and backfill.
- Place regulation "Men Working" and warning signs as required to comply with Maryland State Highway Administration Manual of Traffic Control for Highway Construction and Maintenance Operations.
- All water mains to be C.I.P. or D.I.P. unless otherwise noted.
- Top of all water mains to have a minimum of 3'-1/2' cover unless otherwise noted.
- Valves adjacent to tees shall be strapped to tees.
- Block all fittings with concrete.
- Bury line elevations on fire hydrants shall be set to the elevations shown on the drawings. All fire hydrants shall be strapped and buttressed with concrete in accordance with standard details. Soil around the fire hydrant to be compacted in accordance with Sections 3701 & 3705 of the Standard Specifications.
- All water house connections shall be for an outside meter setting.
- The contractor shall not operate any water main valves on the existing system.
- All sewer mains shall be C.S.P.X., V.G.P.X., P.V.C., or A.C.P. Class 2400 unless otherwise noted.
- The contractor shall provide a joint in all sewer mains within 2'-0" of exterior manhole wall.
- All manholes shall be 4'-0" inside diameter, unless otherwise noted.
- Water main and water house connection lines must have a minimum of one foot separation from the sanitary sewer and sewer house connections as they cross. Except at crossings, water and sewer lines shall have a minimum horizontal separation of 10'.
- For all Copper Water House Connections, utilize flared type fittings only.

CONTRACT NO. 34-1181-D
 VILLAGE OF HICKORY RIDGE
 SECTION 3 AREA 4
 HOWARD COUNTY, MARYLAND
 DEPARTMENT OF PUBLIC WORKS

Sediment Control Measures will be implemented in accordance with Article No. 15 of the Specifications & with Site Development Plan 84-56 ; Drawings 4, 5 & 6 Sediment & Erosion Control.

REVIEWED FOR HOWARD SOIL CONSERVATION DISTRICT AND MEETS TECHNICAL REQUIREMENT.

William K. Sully 2-7-84
 SIGNATURE DATE

U.S. SOIL CONSERVATION SERVICE

This Development Plan is approved for Soil Erosion and Sediment Control by the Howard Soil Conservation District.

APPROVED: *Howard S.C.D.* 2-7-84
 HOWARD S.C.D. DATE

QUANTITIES		
ITEM	ESTIM'D AS-BUILT	MATERIAL/SUPPLIER
8" W	742 LF	742 LF C1.52 DIP/ATLANTIC STATES
Fire Hydrant	2 EA	2 EA METROPOLITAN 5' U.S. PIPE
2" WNC	25 LF	25 LF TYPE 'K' CAMBRIDGE/LEE
2' Diameter Manhole	1 EA	1 EA (ASTM)C-478/ATLANTIC PRECAST
2" Meter Vault	8 EA	

COLUMBIA
 PARCEL "K"
 VILLAGE OF HICKORY RIDGE
 SECTION 3 AREA 4

DEPARTMENT OF PUBLIC WORKS
 HOWARD COUNTY, MARYLAND

Robert M. Beinder 2-6-84
 DIRECTOR OF PUBLIC WORKS DATE

William K. Sully 2-7-84
 CHIEF, BUREAU OF ENGINEERING DATE

Robert M. Beinder 2-6-84
 CHIEF, BUREAU OF UTILITIES DATE

William K. Sully 2-7-84
 CHIEF, LAND DEVELOPMENT DIV. DATE

CFE CLARK, FINEFROCK & SACKETT
 ENGINEERS - PLANNERS - SURVEYORS

11315 LOCKWOOD DRIVE, SILVER SPRING, MARYLAND 20904
 (301) 593-3400

Carlton K. Kestel

DES: C.K.G.	V.L.B.	1	Changed inside to outside meters.	9/28/84
DRN: V.L.B.				
CHK: C.K.G.				
DATE: 10-83	BY	NO.	REVISION	DATE

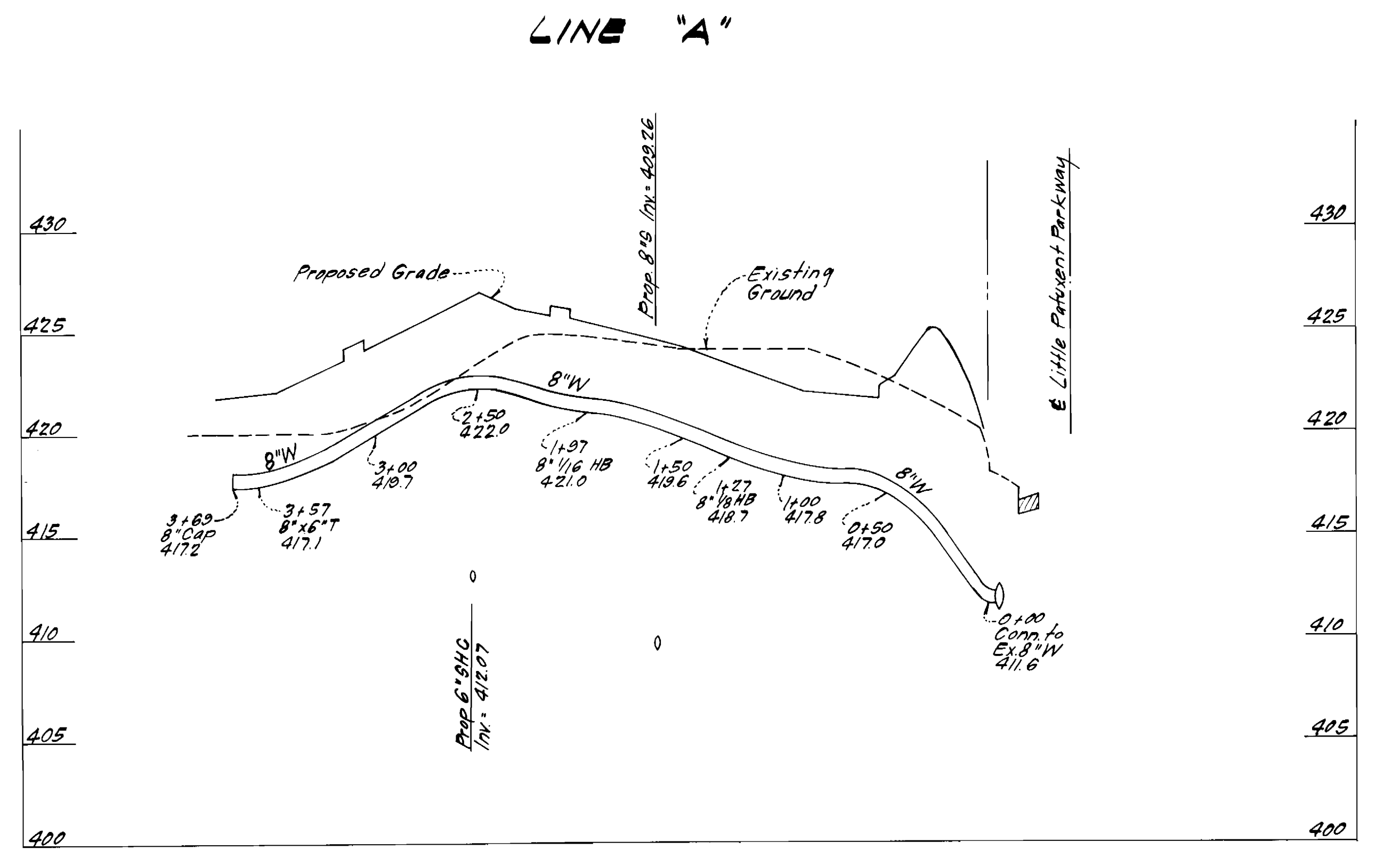
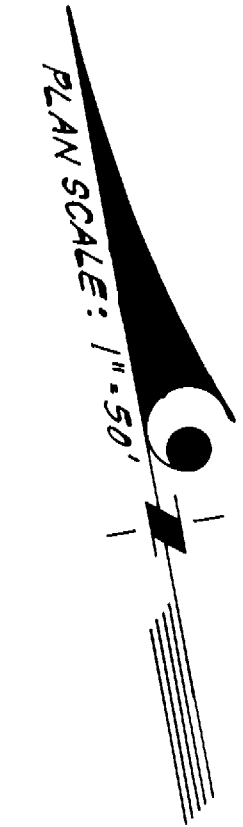
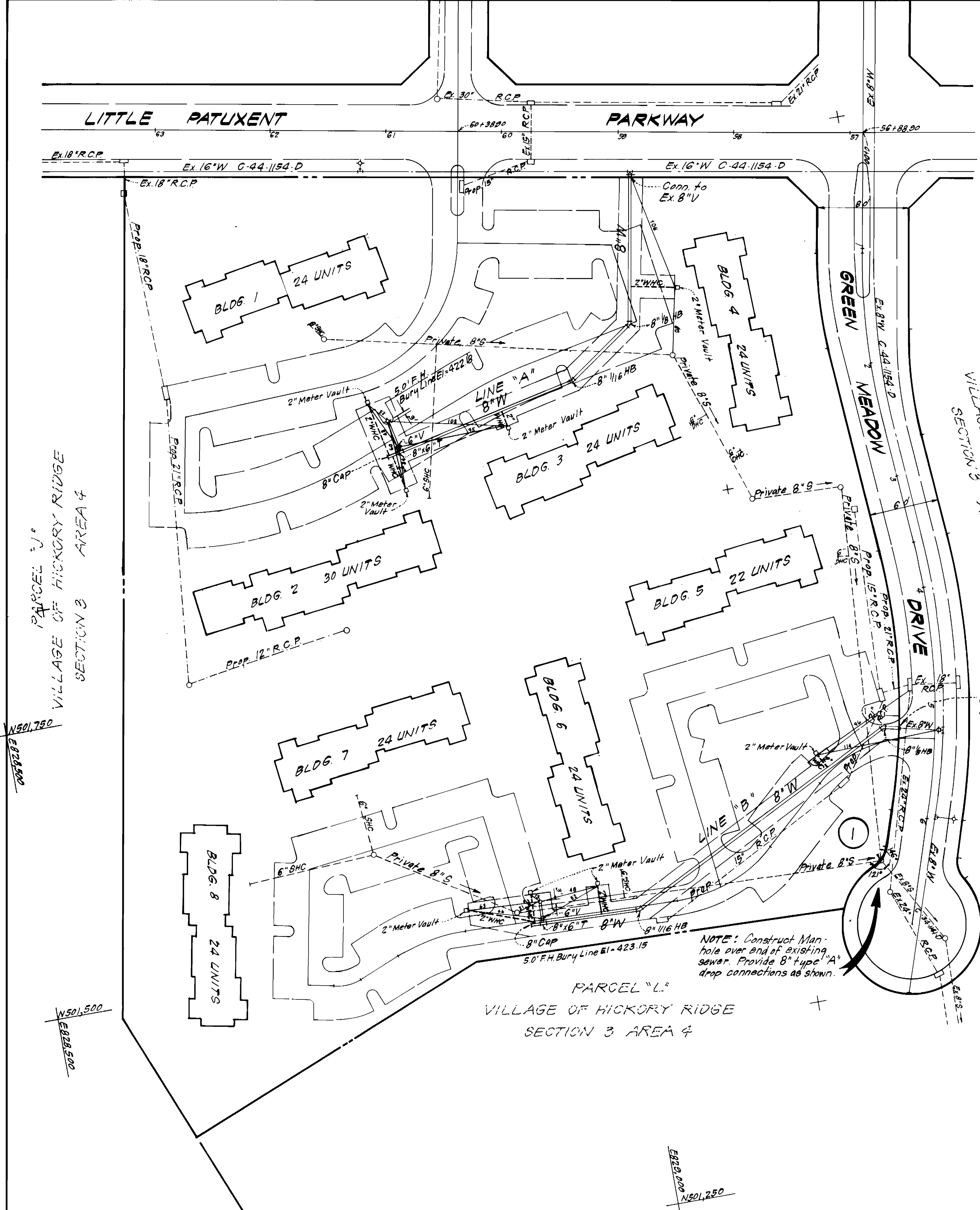
TITLE SHEET

600' SCALE MAP NO. 35 BLOCK NO.

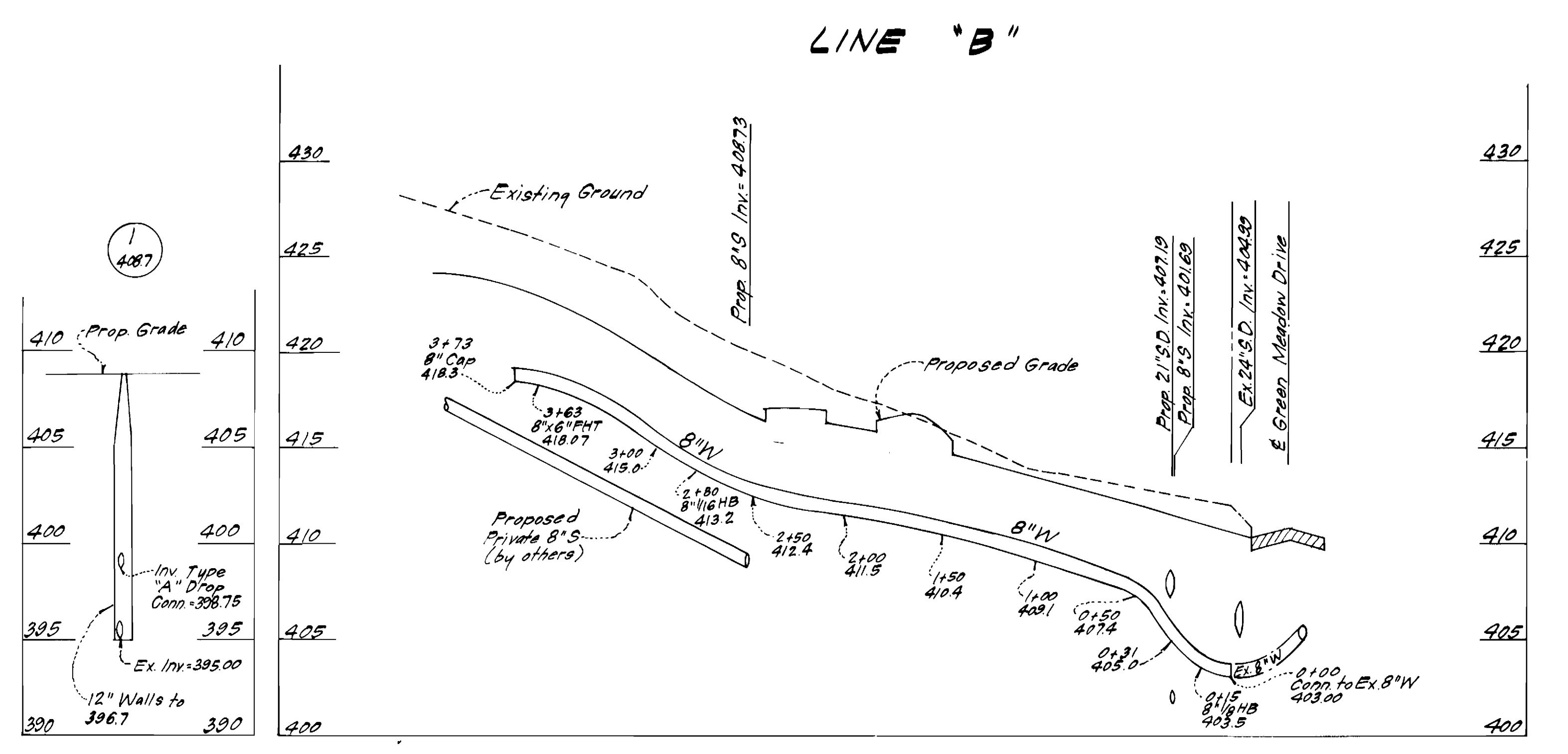
COLUMBIA
 VILLAGE OF HICKORY RIDGE
 6TH ELECTION DISTRICT
 CONTRACT NO. 34-1181-D

SCALE
 1" = 600'

SHEET
 1 of 2



PROFILE SCALE
 Horiz. : 1" = 50'
 Vert. : 1" = 5'



NOTE: Construct Man-hole over end of existing sewer. Provide 8" type "A" drop connections as shown.

DEPARTMENT OF PUBLIC WORKS
 HOWARD COUNTY, MARYLAND
 Director of Public Works: *Shirley F. Newmyer* 2-8-84
 Chief, Bureau of Engineering: *Robert M. Brinner* 2-6-84
 Chief, Land Development Div.: *Robert M. Brinner* 2-6-84

CLARK, FINEPROCK & SACKETT
 ENGINEERS, PLANNERS, SURVEYORS
 11315 LOCKWOOD DRIVE, SILVER SPRING, MARYLAND 20904
 (301) 593-3400

DES: C.K.G.	V.L.B.	1	Added Meter Vaults outside easements.	9/28/84
DRN: V.L.B.				
CHK: C.K.G.				
DATE: 10-83	BY: NO.		REVISION	DATE

PLAN & PROFILES OF
 WATER MAIN
 60' SCALE MAP NO. 35 BLOCK NO.

COLUMBIA
 VILLAGE OF HICKORY RIDGE
 6TH ELECTION DISTRICT
 CONTRACT NO. 34-1181-D
 SCALE AS SHOWN
 SHEET 2 OF 2