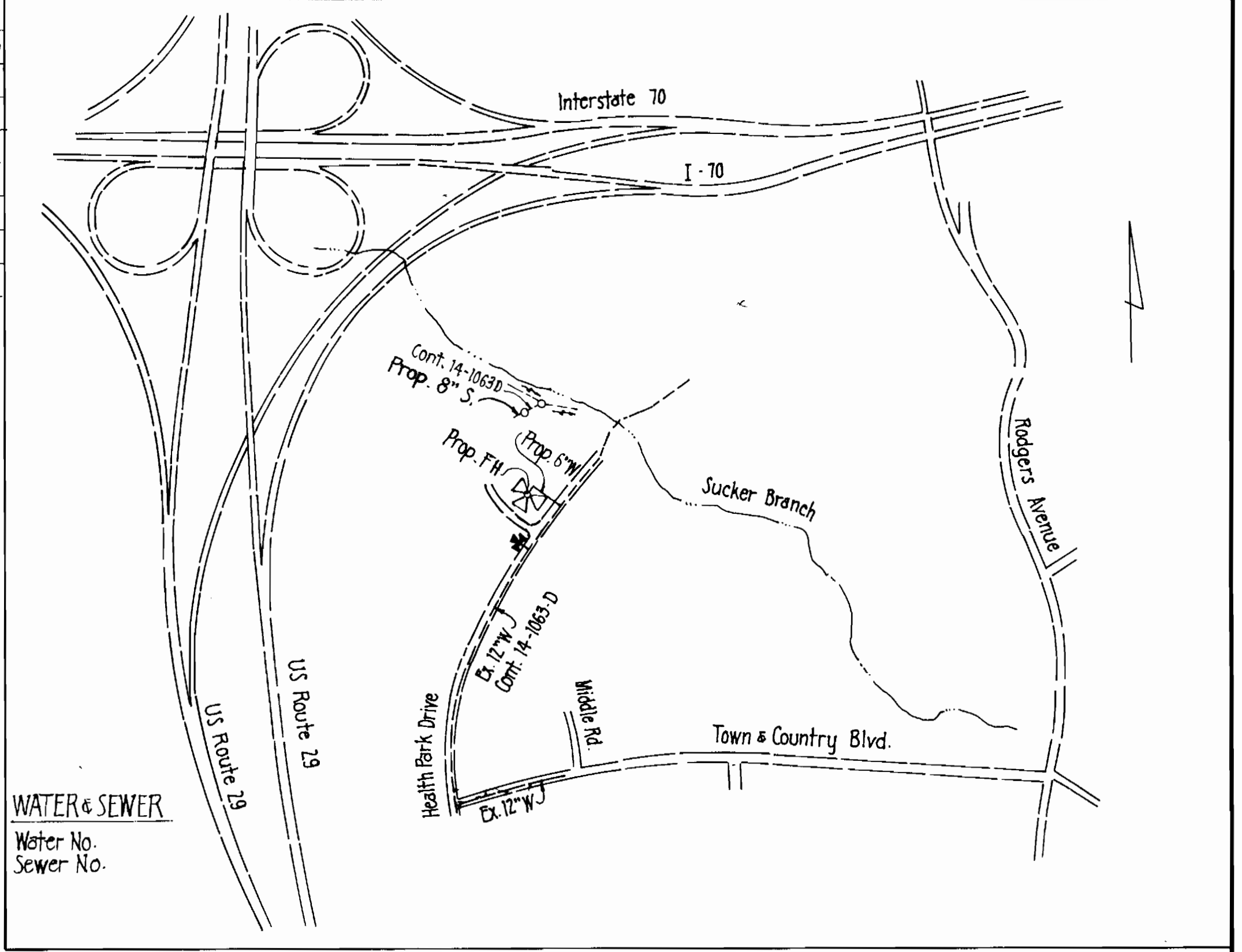
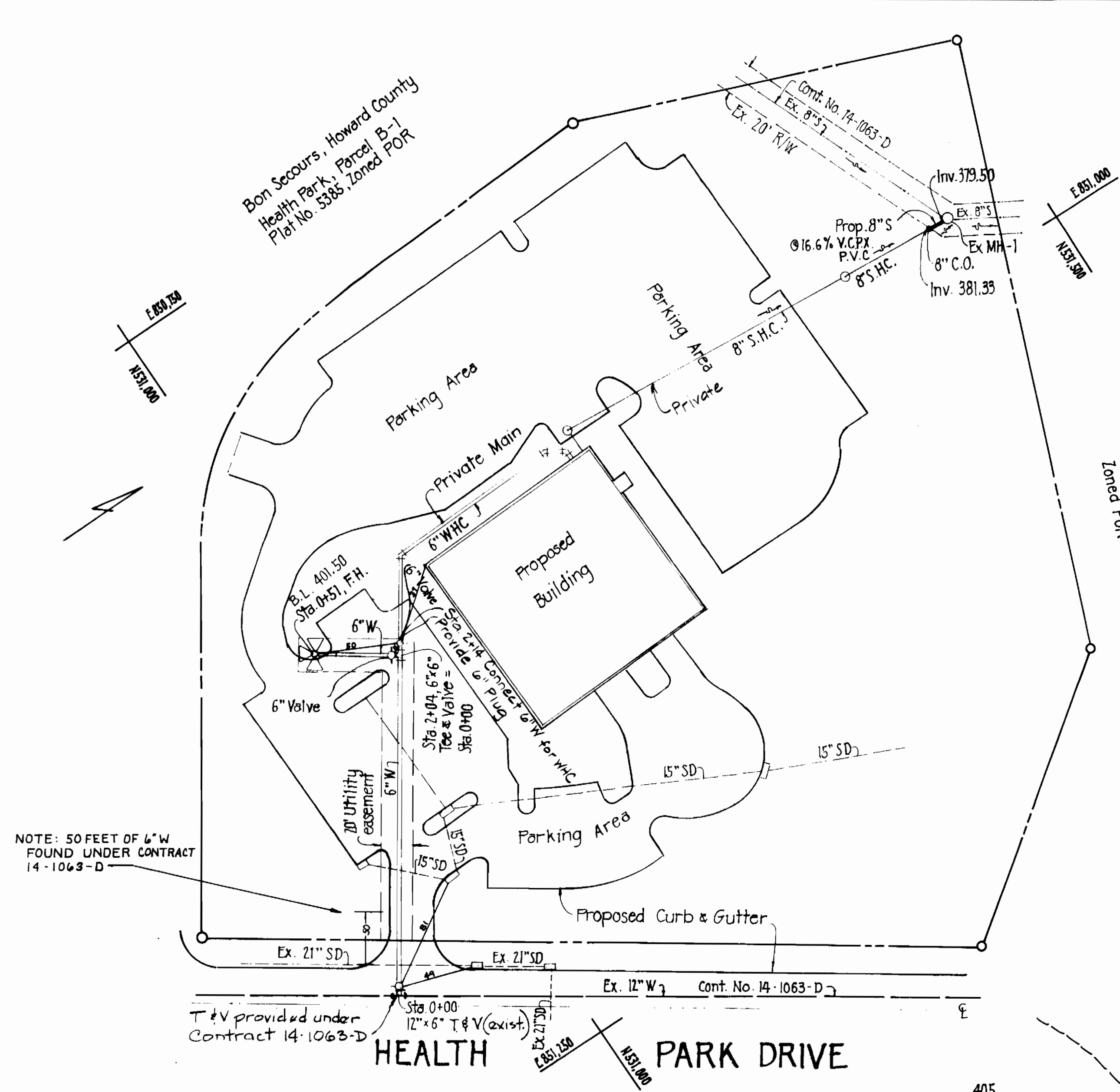


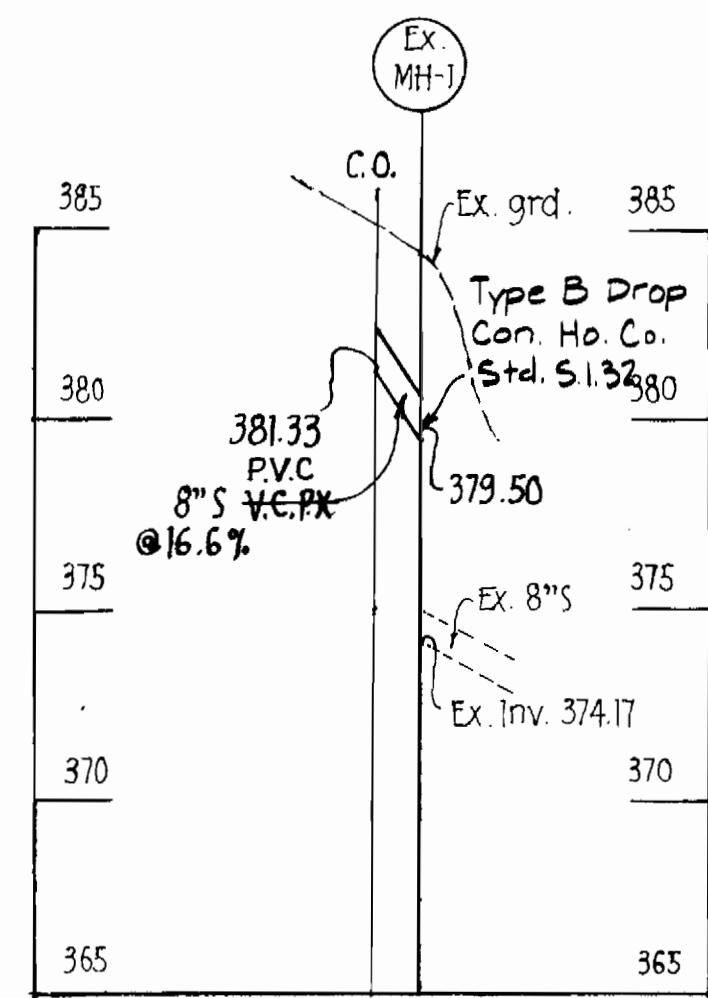
SUPPLIER	ITEMS	ESTIMATE	AS SUPPLIED
GRIFFIN	6" Water Main	255 LF	215 SLF
DRESSER	FIRE HYDRANT	1 unit	1.0
GRIFFIN	12"x6" T, S, & Y	1 "	14-1063-D CONTRACT
DRESSER	6" x 6" Tee	1 "	1.0
DRESSER	6" Valve	2 units	2.
JOHNSMAN	8" Sewer Main	11 LF	12.0LF
	8" Clean Out	1 unit	



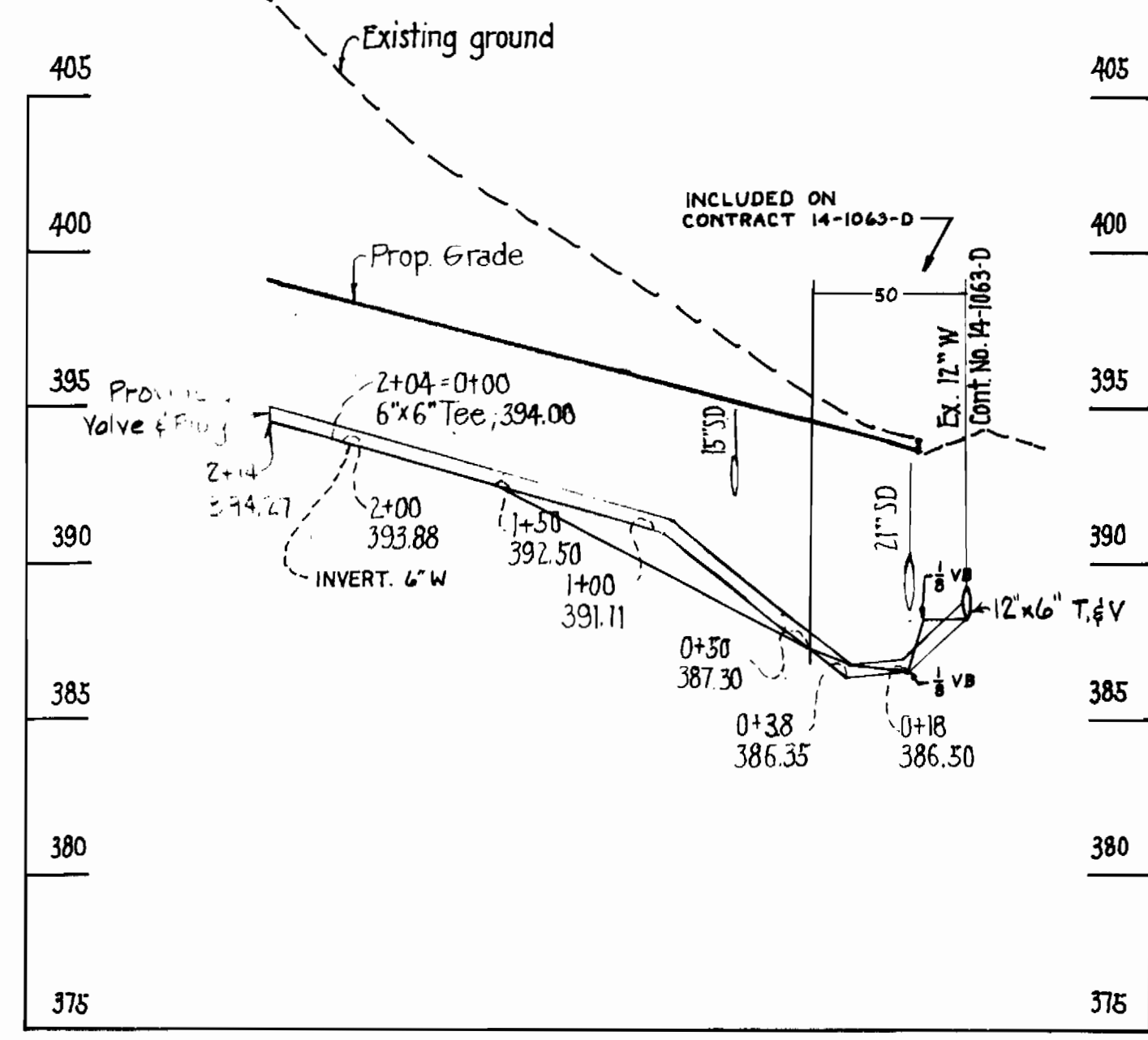
VICINITY MAP
Scale: 1" = 600'



PLAN
1" = 50'



8" SEWER MAIN
Hor. 1" = 50' Vert. 1" = 5'



PROFILE
SCALE: HOR. 1" = 50' VERT. 1" = 5'

GENERAL NOTES

- The approximate location of existing utility is shown. The Contractor shall take all necessary precautions to protect existing utilities and to maintain uninterrupted service. Any damaged incurred due to the Contractor's operation shall be repaired immediately at the Contractor's expense.
- All horizontal controls are based on Maryland State Coordinates.
- All vertical controls are based on USGS datum.
- All pipe elevations shown are invert elevations.
- All utilities shall be cleared by a min. 6". All utility poles shall be cleared by a min. of 2' or tunneled if required. Cost for tunneling or bracing poles shall be included in the unit prices bid for excavation and backfill for water mains.
- For all standard details, see standards bound in the specifications.
- The Contractor shall locate existing utilities in advance of construction operations in the vicinity of proposed utilities.
- Notify the Bureau of Utilities, Howard County Phone 992-2366, prior to making any tie on the existing water main.
- The Contractor shall remove tree stumps and roots along the line of excavation as directed by the Engineer. Cost for such removal shall be included in the unit prices bid for excavation and backfill for water main and sewer main.
- The Contractor shall place regulation "Men Working" and warning signs as required to comply with Md. SHA Manual of Traffic Control for Highway Construction and Maintenance Operations.
- All water mains shall be C.I.P. or D.I.P. unless otherwise noted.
- The top of all water mains shall have a min. of 3'-6" cover unless otherwise noted.
- All valves shall be strapped to the tees in accordance with the standard details.
- All water main fittings shall be buttressed or anchored with conc. in accordance with standard details.
- All fire hydrants shall be strapped to the tees and shall be buttressed with concrete in accordance with the standard details. The cost of strapping fire hydrants and valves shall be included in the unit price bid for furnishing and installing fire hydrants shall be compacted in accordance with Sec. 3104.3.15 of the standard specifications. Fire hydrant bury line elevation shall be set to the elevations shown on the drawing.
- Water house connection shall be for inside meter settings.
- The Contractor shall notify the following utilities at least five (5) days before starting work shown:
 - Baltimore Gas and Electric - Underground Electric Distribution: 234-5891; Underground Gas Distribution: 234-5533
 - Miss Utility - 553-0100
 - C&P Telephone Co. 725-9976
 - Bureau of Utilities: 992-2366

NOTE: 50 FEET OF 6" W FOUND UNDER CONTRACT 14-1063-D

SEDIMENT CONTROL MEASURES FOR THIS CONTRACT WILL BE IMPLEMENTED IN ACCORDANCE WITH APT NO. 15 OF THE HOWARD COUNTY STANDARD SPECIFICATIONS AND AS PER SITE DEVELOPMENT PLAN NO.

HOWARD SOIL CONSERVATION DISTRICT REVIEWED FOR HOWARD SOIL CONSERVATION DISTRICT AND MEETS TECHNICAL REQUIREMENTS:

James M. Helms 1-3-83
S. SOIL CONSERVATION SERVICE DATE

THIS PLAN IS APPROVED FOR SOIL EROSION AND SEDIMENT CONTROL BY THE HOWARD SOIL CONSERVATION DISTRICT

William R. ... 1-3-83
HOWARD SOIL CONSERVATION DISTRICT DATE

DEPARTMENT OF PUBLIC WORKS
HOWARD COUNTY, MARYLAND

John F. ... 1-24-84
DIRECTOR OF PUBLIC WORKS DATE

Richard ... 1-24-84
CHIEF - BUREAU OF UTILITIES DATE

... 1-24-84
CHIEF - BUREAU OF ENGINEERING DATE

... 1-24-84
CHIEF - LAND DEVELOPMENT DIVISION DATE

PURDUM & JESCHKE
ENGINEERS
1023 N. CALVERT ST.
BALTIMORE, MARYLAND

CONTRACT NO. 14-1179-D

PLAN & PROFILE
WATER MAIN EXTENSION &
SEWER MAIN EXTENSION

BON SECOURS, SEC. 2, AREA I, PAR. E
2ND ELECTION DISTRICT
HOWARD CO., MARYLAND

DRAWING NO. 1
SCALE AS SHOWN

Rev No	Rev Date	Description
1	6/8/84	Noted 12"x6" V&T as existing