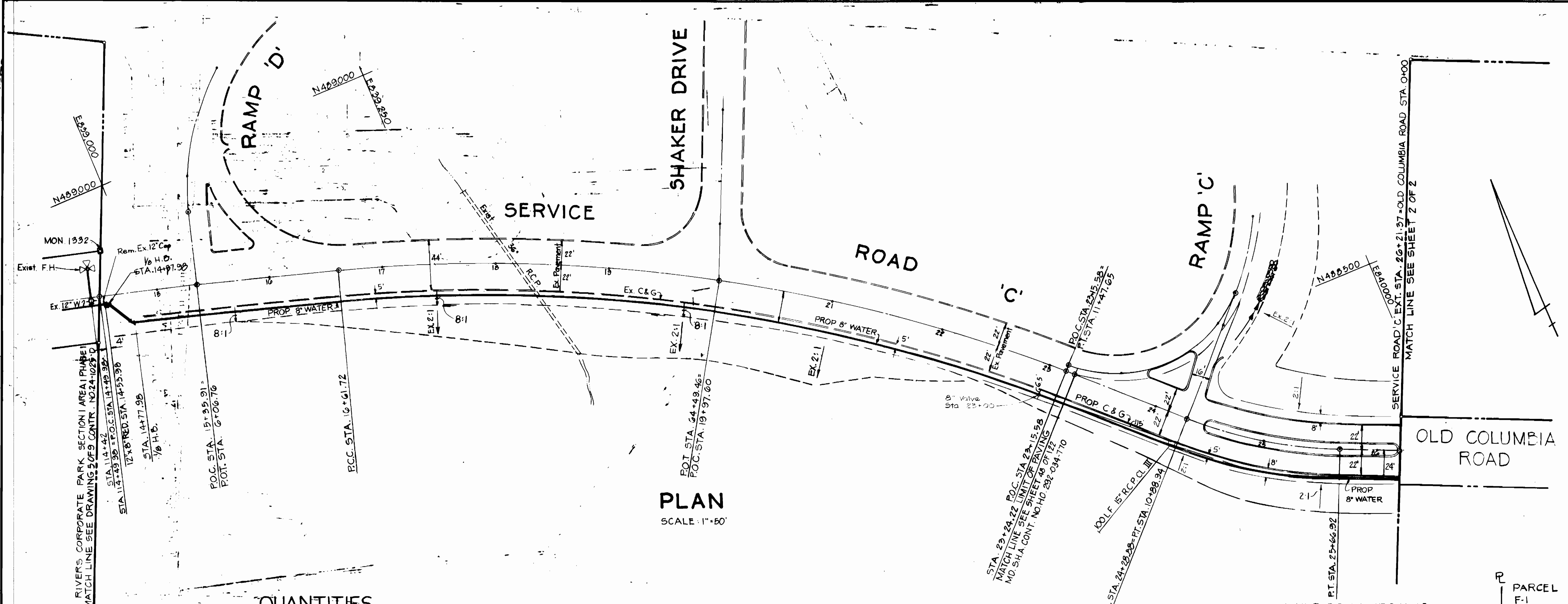


VICINITY MAP
SCALE: 1" = 2000'
DENCH MARK: MON. 1532 Sta. 14+50
Old Columbia Road
40' left E. Elev. 321.44

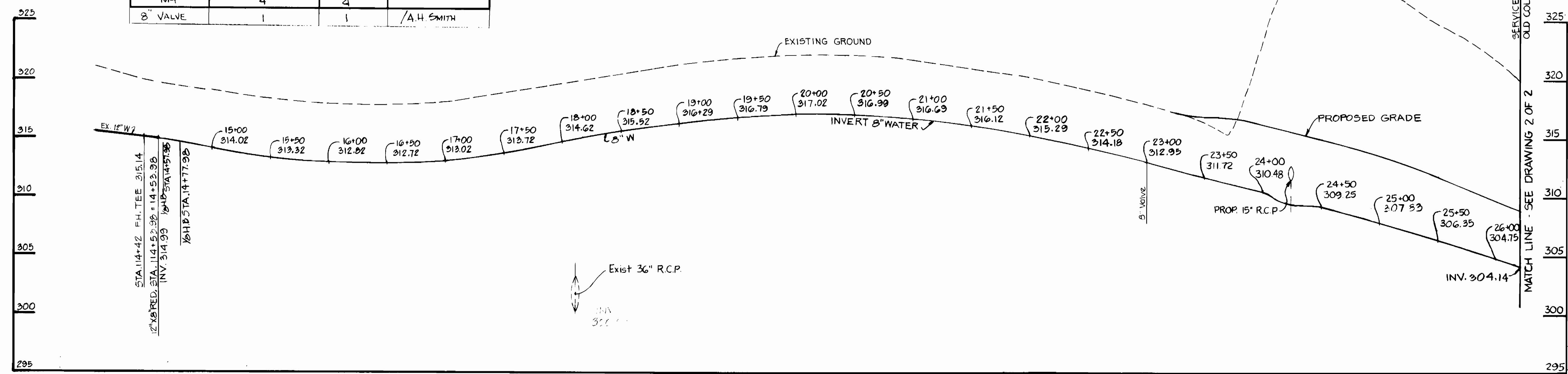


PLAN
SCALE: 1" = 50'

QUANTITIES

Item	Estimated	As Built	Material / Supplier
8" WATER	1490 LF	1490 LF	DIP/US Pipe
6" WATER	110 LF	110 LF	" "
2" WHC	55 LF	55 LF	" "
12"x8" REDUCER	1	1	DIP/US Pipe
6" VALVE	2	2	/A.H. SMITH
F.H.	1	1	" "
8" SANITARY	704 L.F.	688 LF	PVC/Certain-teed
MH	4	4	" "
8" VALVE	1	1	/A.H. SMITH

- GENERAL NOTES**
- PART I**
- APPROXIMATE LOCATION OF EXISTING MAINS ARE SHOWN. CONTRACTOR SHALL TAKE ALL NECESSARY PRECAUTIONS TO PROTECT EXISTING MAINS AND SERVICES AND MAINTAIN UNINTERRUPTED SUPPLY. ANY DAMAGE INCURRED SHALL BE REPAIRED IMMEDIATELY TO THE SATISFACTION OF THE ENGINEER, AT THE CONTRACTOR'S EXPENSE.
 - ALL HORIZONTAL CONTROLS ARE BASED ON MARYLAND STATE COORDINATES.
 - ALL VERTICAL CONTROLS ARE BASED ON U.S.G.S. DATUM.
 - ALL PIPE ELEVATIONS SHOWN ARE INVERT ELEVATIONS.
 - CLEAR ALL UTILITIES BY A MINIMUM OF 6". CLEAR ALL POLES BY 2'-0" MIN. OR TUNNEL AS REQUIRED. ANY COST INCURRED TO THE CONTRACTOR FOR TUNNELING OR BRACING AT POLES SHALL BE INCLUDED IN UNIT PRICES. BID FOR EXCAVATION AND BACKFILL.
 - FOR DETAILS NOT SHOWN ON DWGS. USE HOWARD COUNTY STANDARD DETAILS.
 - FOR MATERIALS & CONSTRUCTION METHODS USE HOWARD CO. STANDARD SPECS.
 - CONTRACTOR SHALL LOCATE EXIST. UTILITIES A MIN. OF TWO (2) WEEKS IN ADVANCE OF CONSTRUCTION OPERATIONS IN THE VICINITY OF PROPOSED UTILITIES AT HIS OWN EXPENSE.
 - CONTRACTOR SHALL NOTIFY THE FOLLOWING UTILITIES OR AGENCIES AT LEAST FIVE (5) WORKING DAYS BEFORE STARTING WORK SHOWN ON PLANS:
 - STATE HIGHWAY ADMINISTRATION - 531-5533
 - BALTIMORE GAS & ELECTRIC CO.-UNDERGROUND ELECTRIC DISTRIBUTION-CUSTOMER SERVICE - 685-0123
 - BALTIMORE GAS & ELECTRIC CO.-UNDERGROUND GAS DISTRIBUTION-CUSTOMER SERVICE - 685-0123
 - ENGINEERING- "DAMAGE CONTROL" - 234-5621
 - "MISS UTILITY" - 1-559-0100
 - CHESAPEAKE & POTOMAC (C&P) TELEPHONE COMPANY - 725-9976
 - AMERICAN TELEPHONE & TELEGRAPH-CABLE LOCATION DIVISION - 393-3555
 - COLONIAL PIPELINE COMPANY - 781-4641
 - BUREAU OF UTILITIES HOWARD COUNTY - 992-2366
 - TREES ARE TO BE PROTECTED FROM DAMAGE TO MAXIMUM EXTENT. TREES LOCATED WITHIN THE CONSTRUCTION STRIP ARE NOT TO BE REMOVED OR DAMAGED BY THE CONTRACTOR.
 - CONTRACTOR SHALL REMOVE TREES, STUMPS & ROOTS ALONG LINE OF EXCAVATION AS DIRECTED BY ENGINEER. PAYMENT FOR SUCH REMOVAL SHALL BE INCLUDED IN UNIT PRICE BID FOR EXCAVATION AND BACKFILL.
 - PLACE REGULATION "MEN WORKING" AND WARNING SIGNS AS REQUIRED TO COMPLY WITH MARYLAND STATE HIGHWAY ADMINISTRATION MANUAL OF TRAFFIC CONTROL FOR HIGHWAY CONSTRUCTION AND MAINTENANCE OPERATIONS.



SERVICE ROAD 'C'

PROFILE
SCALE: HOR. 1" = 50'
VERT. 1" = 5'

NOTE:
Sediment control measures for this contract will be implemented in accordance with article 15 of the Specifications and also as shown on the Grading and Sediment Control Plan GP 84-32 and F 84-78.

WATER AND SEWER CODE
SEWER CODE: 5290000
WATER CODE: E-16

TYPE OF BUILDINGS: INDUSTRIAL
NO. OF LOTS: 3
NO. OF WATER CONNECTIONS: 3
NO. OF SEWER CONNECTIONS: 3
DRAINAGE AREA: LITTLE PATUKENT

- ALL PVC PIPE IS TO BE INSTALLED IN ACCORDANCE WITH MANUFACTURER'S AND HOWARD COUNTY SPECIFICATIONS.
- WATERMAIN AND WATERHOUSE CONNECTIONS MUST HAVE AT LEAST ONE FOOT SEPARATION FROM THE SEWER MAIN AND SEWER HOUSE CONNECTION AS THEY PASS ABOVE IT.

DEPARTMENT OF PUBLIC WORKS
HOWARD COUNTY, MARYLAND

Director of Public Works: [Signature]
Date: 12-13-83

Chief - Bureau of Engineering: [Signature]
Date: 12-13-83

Chief - Land Development Division: [Signature]
Date: 12-13-83

CENTURY ENGINEERING, INC.
CONSULTING ENGINEERS - PLANNERS
TOWSON, MARYLAND 21204

CONTRACT NO. 24-1174-D

REVIEWED FOR HOWARD SOIL CONSERVATION DISTRICT AND MEETS TECHNICAL REQUIREMENT.

Signature: [Signature]
Date: 12-13-83
U.S. Soil Conservation Service

THIS DEVELOPMENT PLAN IS APPROVED FOR SOIL EROSION AND SEDIMENT CONTROL BY THE HOWARD SOIL CONSERVATION DISTRICT.

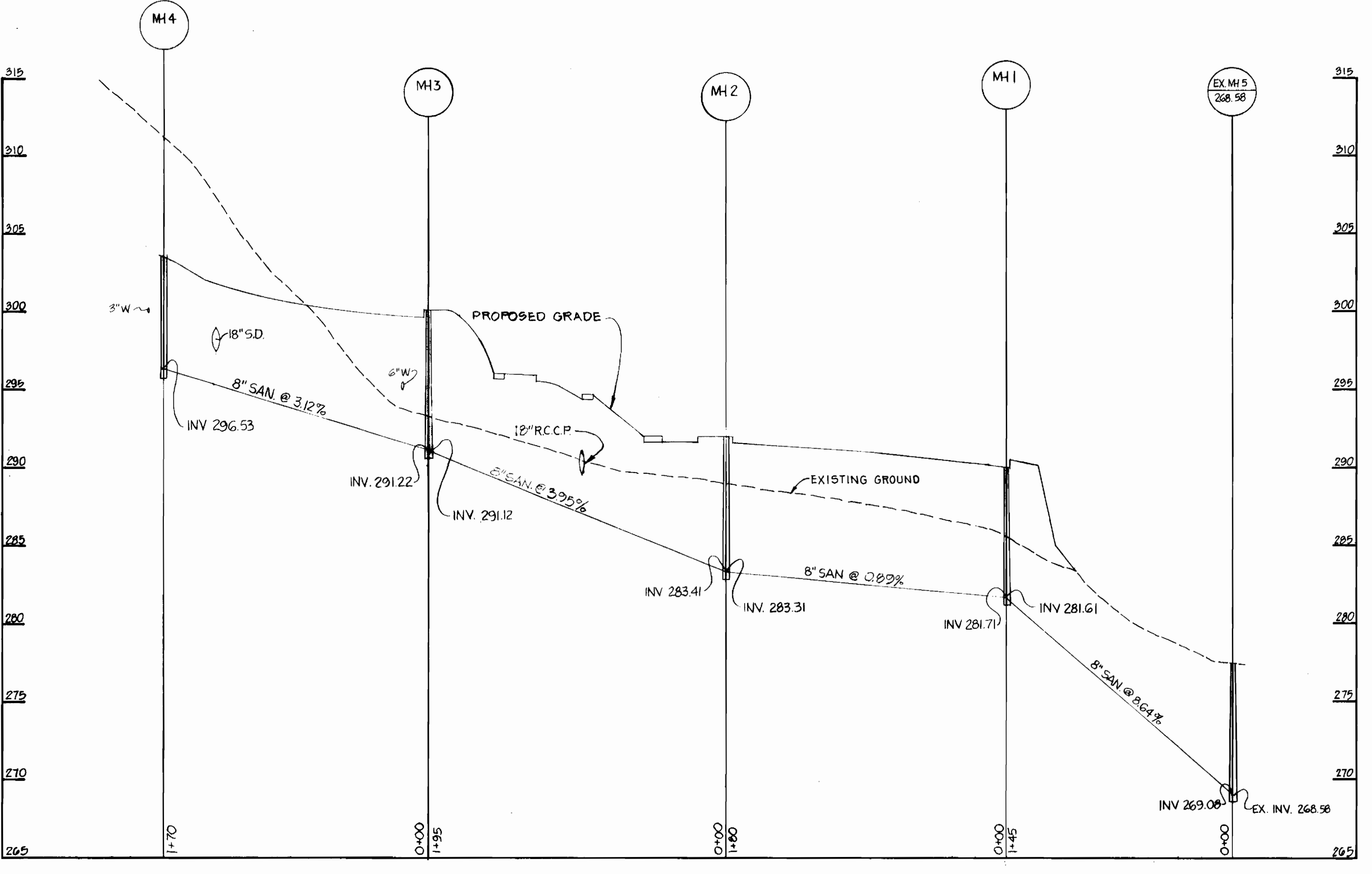
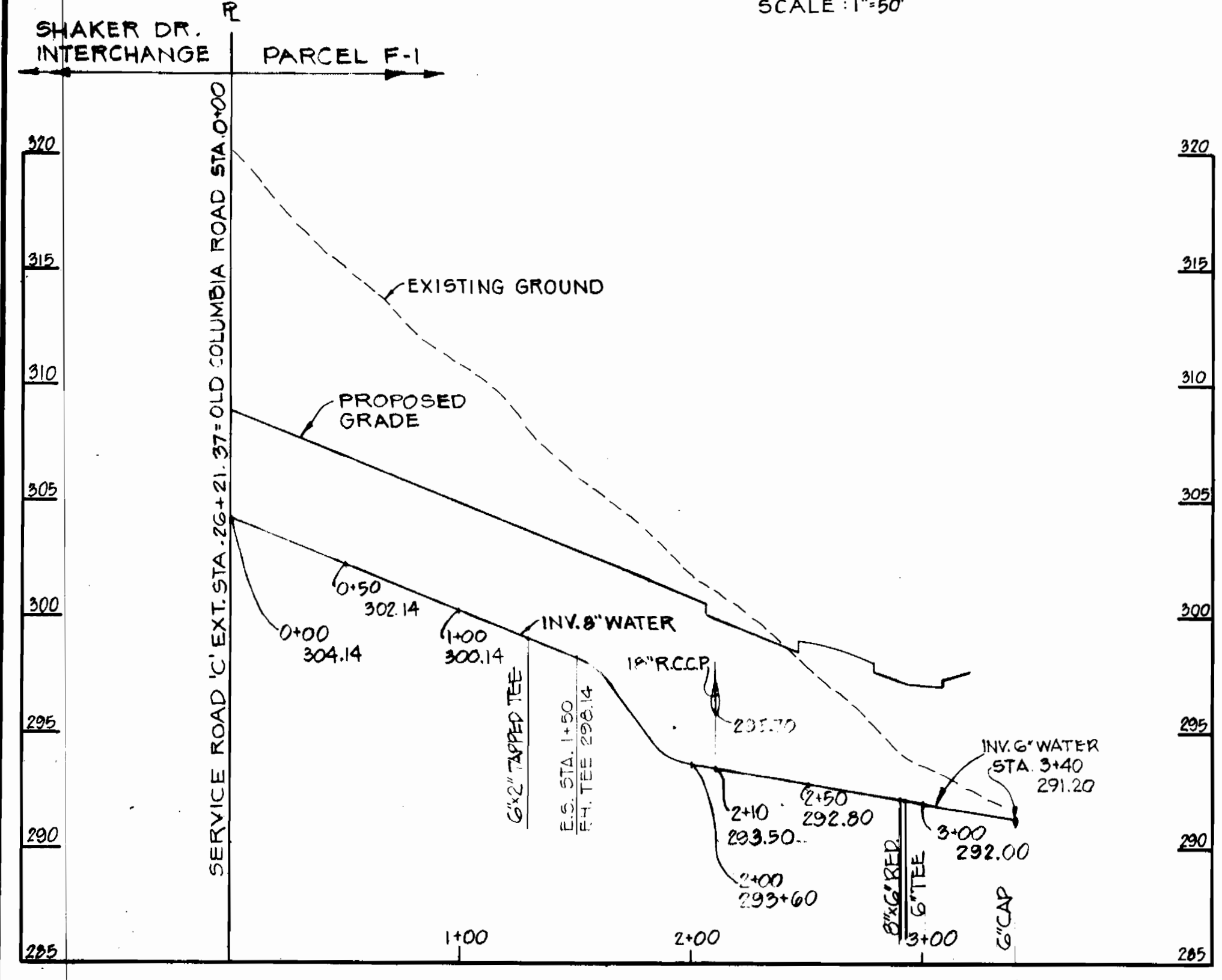
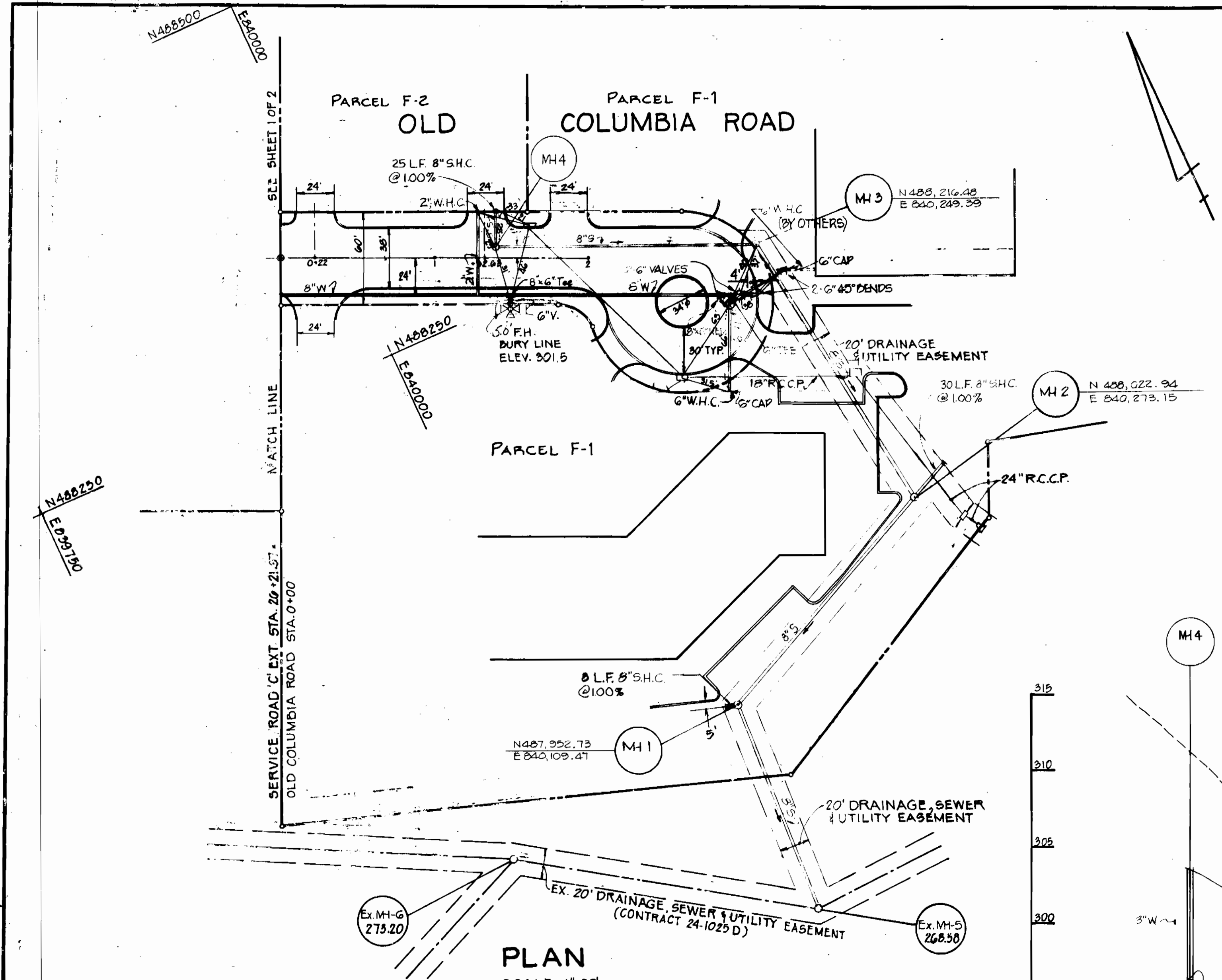
APPROVED: [Signature]
Date: 12-13-83
Howard Soil Conservation District

PLAN AND PROFILE
OF
WATER AND SEWER MAINS

RIVERS CORPORATE PARK
SECTION I, AREA 1, PARCELS F-1, F-2
6TH ELECTION DISTRICT
HOWARD COUNTY, MARYLAND

DRAWING NO. 1 OF 2
SCALE: AS SHOWN

AS BUILT JULY, 1984



DEPARTMENT OF PUBLIC WORKS
HOWARD COUNTY, MARYLAND

John F. Neuman 12-15-83
DIRECTOR OF PUBLIC WORKS - DATE

Robert M. Bevington 12-13-83
CHIEF - BUREAU OF UTILITIES - DATE

James E. Redman 12-14-83
CHIEF - BUREAU OF ENGINEERING - DATE

William J. Jones 12-14-83
CHIEF - LAND DEVELOPMENT DIVISION - DATE

OLD COLUMBIA ROAD
PROFILE SCALE: HOR. 1"=50'
VERT. 1"=5'

CENTURY ENGINEERING, INC.
CONSULTING ENGINEERS - PLANNERS
TOWSON, MARYLAND 21204

CONTRACT NO. 24-1174-D

REVIEWED FOR HOWARD SOIL CONSERVATION DISTRICT AND MEETS TECHNICAL REQUIREMENT.

William K. Sully 12-13-83
Signature Date
U.S. Soil Conservation Service

PLAN AND PROFILE
OF
WATER AND SEWER MAINS

THIS DEVELOPMENT PLAN IS APPROVED FOR SOIL EROSION AND SEDIMENT CONTROL BY THE HOWARD SOIL CONSERVATION DISTRICT.

APPROVED: *William K. Sully* 12-13-83
Howard Soil Conservation District Date

REVISED WATER PLAN & PROFILE PARCEL F-1 2-19-84
REVISED PROFILE MH1 TO MH2 FEB 10 1984

RIVERS CORPORATE PARK
SECTION 1, AREA 1, PARCELS F-1, F-2
6TH ELECTION DISTRICT
HOWARD COUNTY, MARYLAND

11-14-83
DATE

DRAWING NO. 2 OF 2
SCALE AS SHOWN

AS BUILT, JULY 1984