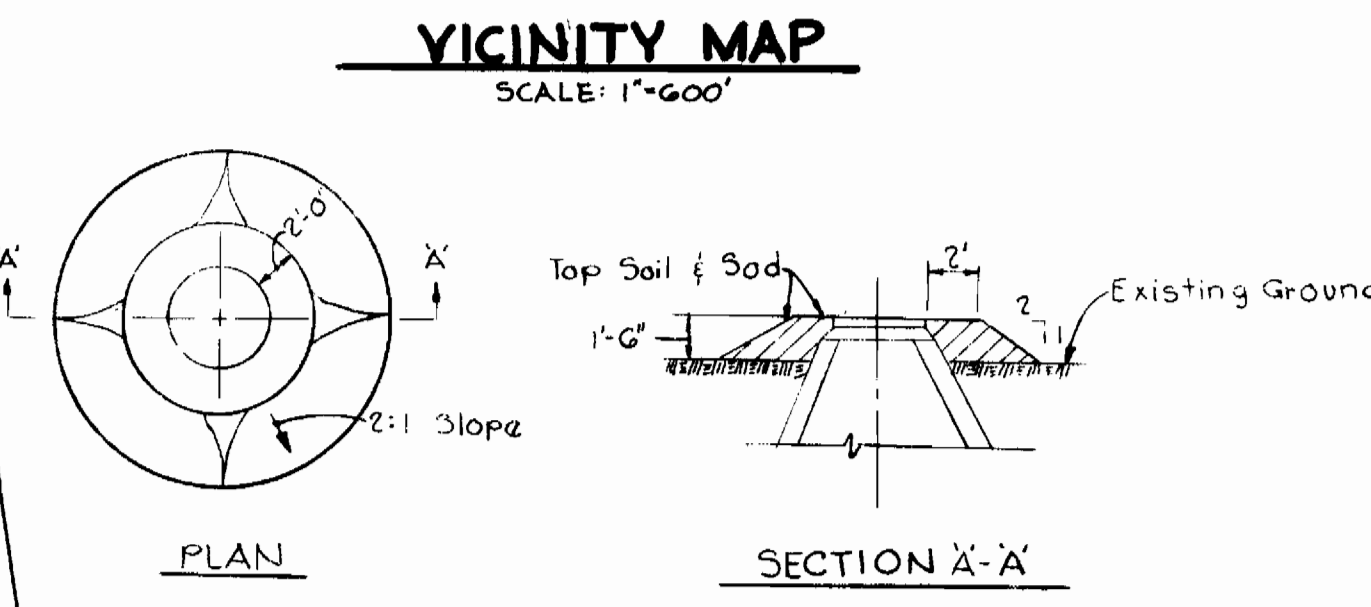
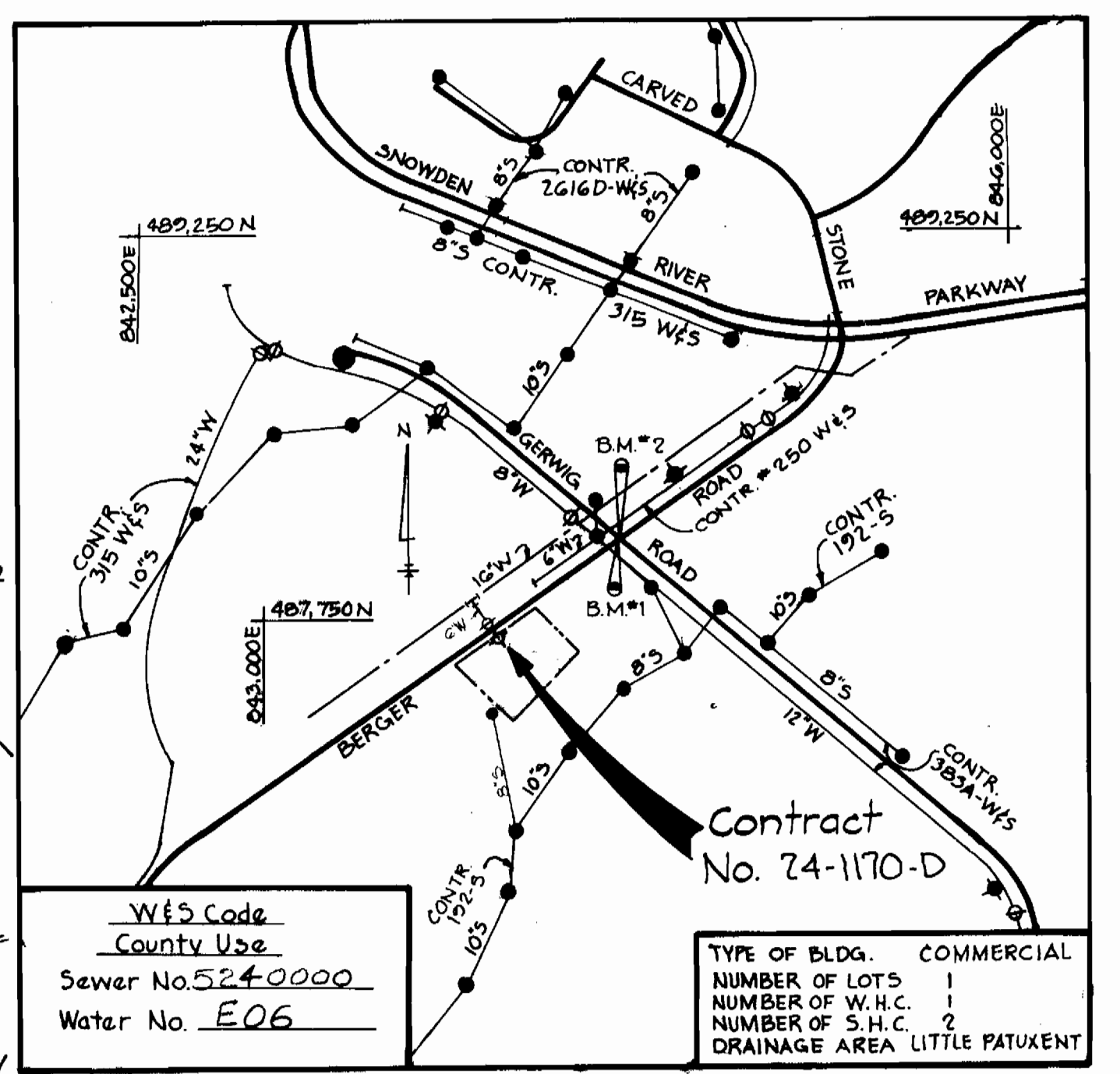
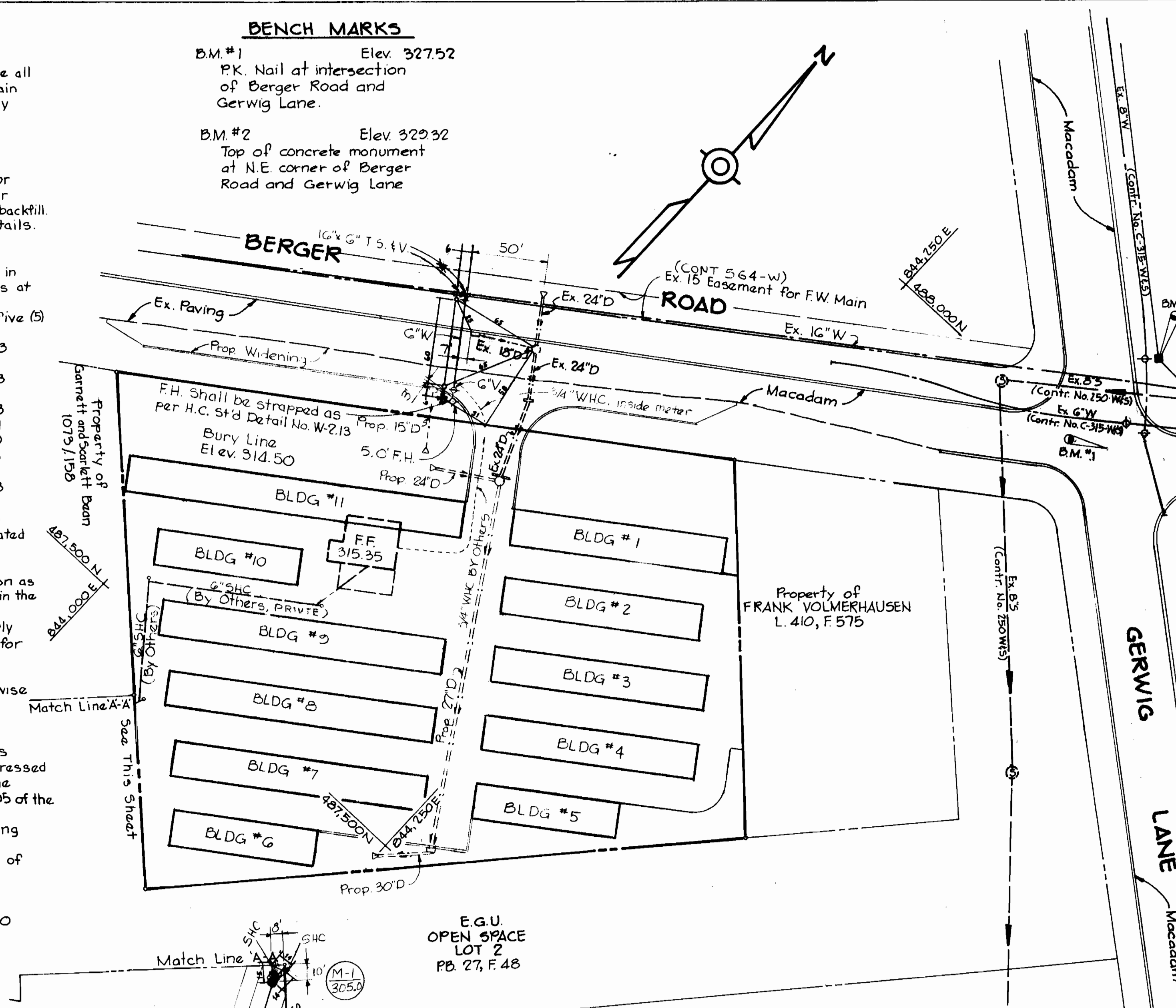


**GENERAL NOTES**

- Approximate location of existing mains are shown. The contractor shall take all necessary precautions to protect existing mains and services and maintain uninterrupted supply. Any damage incurred shall be repaired immediately to the satisfaction of the Engineer at the Contractor's expense.
- All horizontal controls are based on Maryland State Coordinates.
- All vertical controls are based on U.S.G.S. Datum.
- All pipe elevations shown are invert elevations.
- Clear all utilities by a minimum of 6'. Clear all poles by 2'-0" minimum or tunnel as required. Any cost incurred to the Contractor for tunneling or bracing at poles shall be included in unit prices bid for excavation and backfill. For details not shown on the drawings use Howard County Standard Details.
- For materials and construction methods use Howard County Standard specifications.
- Contractor shall locate existing utilities a minimum of two (2) weeks in advance of construction operations in the vicinity of proposed utilities at his own expense.
- Contractor shall notify the following utilities or agencies at least five (5) working days before starting work shown on this plan:
  - a. State Highway Administration 531-5533
  - b. Baltimore Gas and Electric Company - Underground Electric Distribution Customer Service 685-0123
  - c. Baltimore Gas and Electric Company - Underground Gas Distribution Customer Service 685-0123
  - d. Engineering - "Damage Control" 234-5621
  - e. Miss Utility 1-559-0100
  - f. Chesapeake and Potomac Telephone Company 725-9976
  - g. American Telephone and Telegraph Cable Location Division 993-3553
  - h. Colonial Pipeline Company 781-4641
  - i. Bureau of Utilities Howard County 992-2366
- Trees are to be protected from damage to maximum extent. Trees located within the construction strip are not to be removed or damaged by the Contractor.
- Contractor shall remove trees, stumps and roots along line of excavation as directed by the Engineer. Payment for such removal shall be included in the unit price bid for excavation and backfill.
- Place regulation "Men Working" and warning signs as required to comply with Maryland State Highway Administration Manual of Traffic Control for Highway Construction and Maintenance Operations.
- All water mains to be DLP unless otherwise noted.
- Top of all water mains to have a minimum of 3'-1/2" cover unless otherwise noted.
- Valves adjacent to trees shall be strapped to trees.
- Block all fittings with concrete.
- Bury line elevations on fire hydrants shall be set to the elevations shown on the drawing. All fire hydrants shall be strapped and buttressed with concrete in accordance with standard details. Soil around the fire hydrant to be compacted in accordance with Section 37.01 & 37.05 of the Standard Specifications.
- The Contractor shall not operate any water mains valves on the existing system.
- All water house connections shall have a minimum vertical clearance of 12" above sanitary sewer crossings.
- All sanitary sewer house connections shall have a minimum vertical clearance of 12" below all water main crossings.
- All sewer mains shall be C.S.P.X., V.C.P.X., P.V.C. or A.C.P. Class 2400 unless otherwise noted.
- The contractor shall provide a joint in all sewer mains within 2'-0" of exterior manhole wall.
- All manholes shall be 4'-0" inside diameter, unless otherwise noted.
- For all copper water house connections utilize flared type fitting only.
- Manholes shown with 12" and 16" walls are brick manholes only.
- Manholes designated W.T. in plan and profile shall have watertight frame and covers, Standard Detail S-12 (RCR-G3A). Where watertight frame and cover is used, set top of frame 1'-6" above finished grade.
- House(s) with the symbol "C.N.S." indicates that cellar can not be served.
- Profile stations shall be adjusted as necessary to conform to plan dimensions.
- No pipe shall be laid until, lines of excavation have been brought to subgrade.
- All water house connections shall be for an inside meter setting.
- All references to the standard Details shall be per Howard County Design Manual, Volume IV.

**BENCH MARKS**

- B.M.#1 Elev. 327.52  
PK. Nail at intersection of Berger Road and Gerwig Lane.
- B.M.#2 Elev. 329.32  
Top of concrete monument at N.E. corner of Berger Road and Gerwig Lane

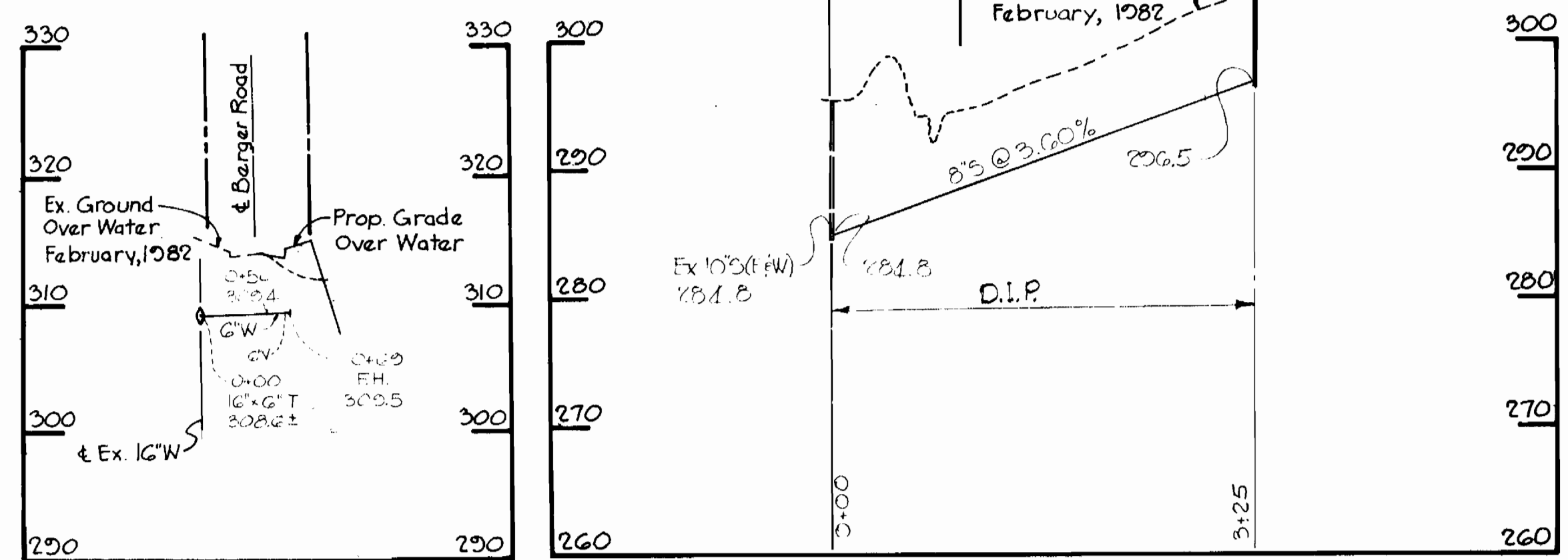


**QUANTITIES**  
No Scale

Item	Estimated	As Built	Material/Supplier
8" Sewer	925 L.F.	323 L.F.	8" CLS. DLP/GRIPPIN PIPE
Manholes	8 V.F.	79 V.F.	4 DIA. MH./TERRE HILL
6" Water	60 L.F.	69 L.F.	6" CLS. DLP/GRIPPIN PIPE
Fire Hydrants	1	1	5" FH./U.S. PIPE
16" x 6" T.S. & V.	1	1	T.S.F.V./U.S. PIPE

**PLAN**  
Scale: 1"=50'

**PROFILES**  
Scale: Hor. 1"=100'  
Vert. 1"=10'

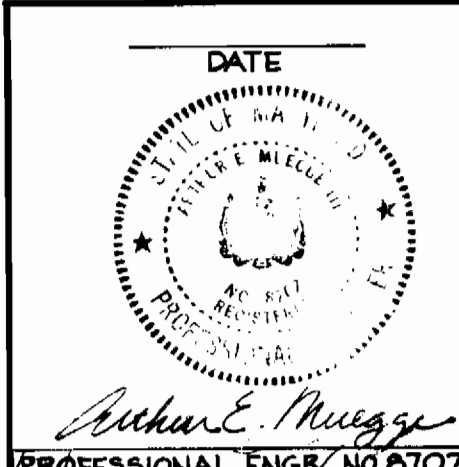


SEDIMENT CONTROL MEASURES FOR THIS CONTRACT WILL BE IMPLEMENTED IN ACCORDANCE WITH ARTICLE 15 OF THE SPECIFICATIONS AND SITE DEVELOPMENT PLAN # SDP-84-58

HOWARD SOIL CONSERVATION DISTRICT:  
REVIEWED FOR HOWARD SOIL CONSERVATION DISTRICT AND MEETS TECHNICAL REQUIREMENTS  
DATE 11-17-83  
HOWARD SOIL CONSERVATION DISTRICT

HOWARD SOIL CONSERVATION DISTRICT:  
REVIEWED FOR HOWARD SOIL CONSERVATION DISTRICT AND MEETS TECHNICAL REQUIREMENTS  
DATE 11-17-83  
HOWARD SOIL CONSERVATION DISTRICT

Mini-Warehouse Facility  
Contract No. 24-1170-D



<p><b>THE RIEMER GROUP, INC.</b> 8659 BALTIMORE NATIONAL PIKE ELLCOTT CITY, MARYLAND 21043</p>	<p><b>DEPARTMENT OF PUBLIC WORKS</b> HOWARD COUNTY, MARYLAND CHIEF, LAND DEVELOPMENT DIVISION DATE 11-23-83</p>	<p>CONTRACT NO. 24-1170-D</p>	<p><b>PLAN AND PROFILES OF WATER AND SEWER MAINS</b></p>	<p><b>MINI WAREHOUSE WATER AND SEWER MAIN EXTENSIONS</b> ELECTION DISTRICT - GUILFORD NO. 6</p>	<p>DRAWING NO. 1 OF 1 SCALE AS SHOWN DATE 11-23-83</p>
--	---	-------------------------------	--	---	--

AS-BUILT JULY 12, 1984

OCTOBER 27, 1983