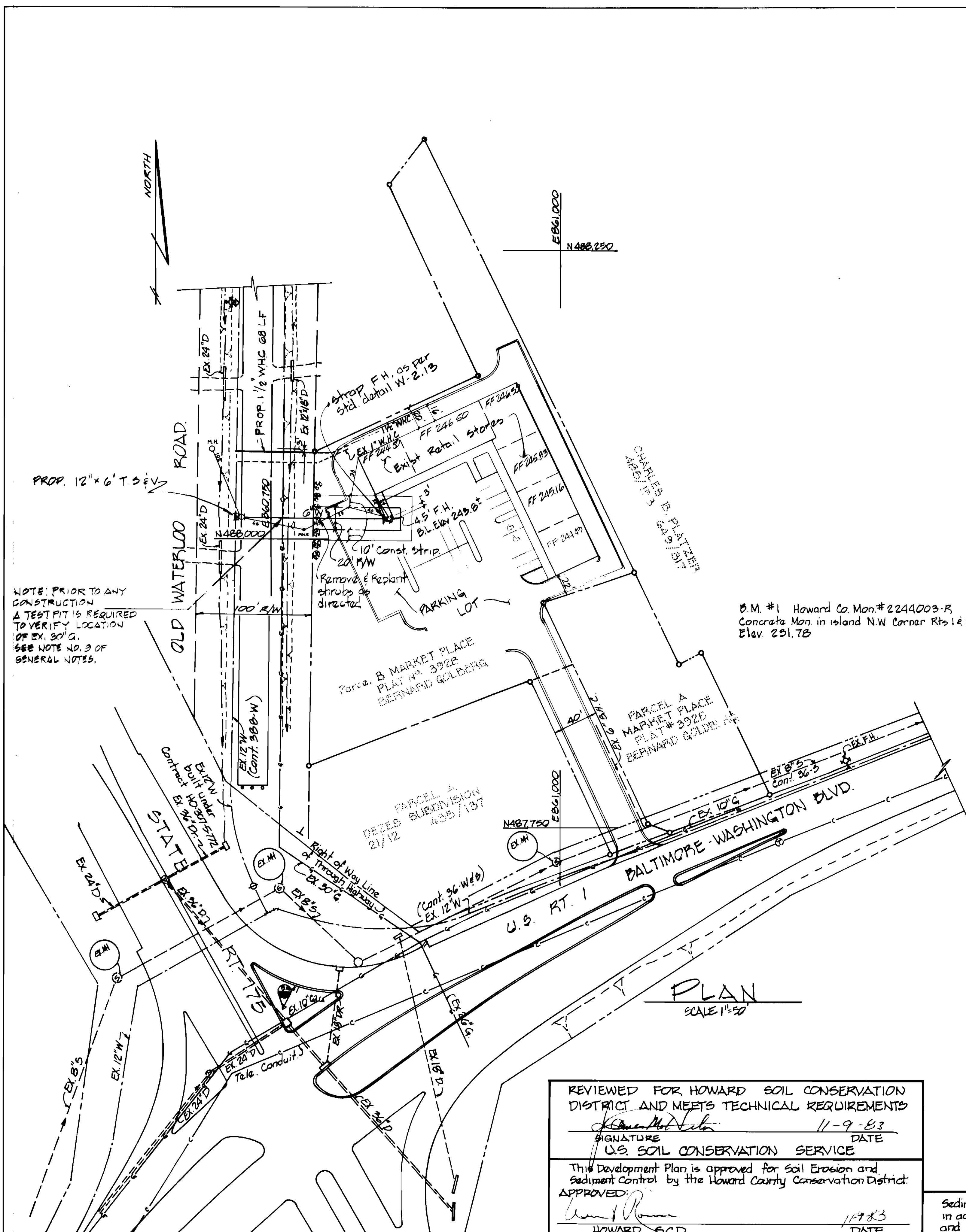


VICINITY MAP
SCALE 1"=600'

GENERAL NOTES

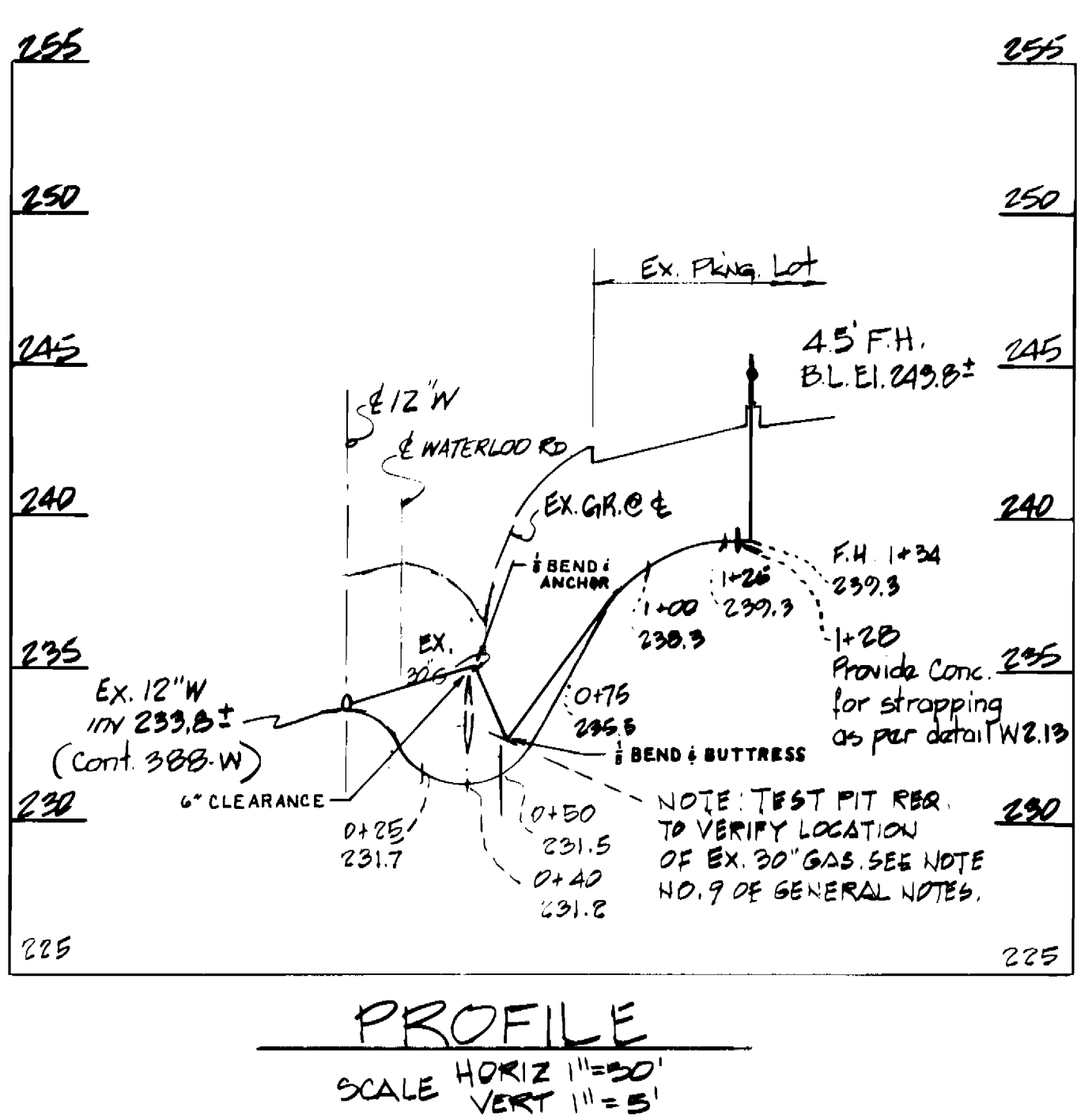
- Approx. location of exist. mains are shown. Contractor shall take all necessary precautions to protect exist. mains and services and maintain uninterrupted supply. Any damage incurred shall be repaired immediately to the satisfaction of the Engineer at the contractor's expense.
- All horizontal controls are based on Md. State Co-ordinates.
- All vertical controls are based on U.S.G.S. datum.
- All pipe elevations shown are invert elevations.
- Clear all utilities by a min. of 6". Clear all poles by 2'-0" minimum or tunnel as required. The owner has contacted the utility companies and made arrangements for bracing of poles as shown on the drawings. In the event the work requires bracing additional poles, any cost incurred by the owner for bracing shall be deducted from money owed the contractor.
- For details not shown, for materials and construction methods, use Howard County Design Manual - Vol. III "Standard Specifications and Details for Construction". The Contractor will have a copy of Vol. III on the job.
- Test pits, when made on exist. utilities are noted by \oplus . Information obtained is noted on the drawing or contained in the special provisions to the specifications. The owner claims no responsibility for the accuracy of the information.
- Exist. utilities in the vicinity of Construction shall be located by the contractor at his own expense 2 weeks in advance of construction.
- Contractor shall notify the following at least 5 working days before starting work shown on these plans.
 State Highway Admin. 331-5553
 D. G. & E. Co. - Underground Elec. Distribution Customer Service 685-0123
 D. G. & E. Co. Underground Gas Distribution Customer Service 685-0123
 D. G. & E. - Engineering Damage Control 234-5621
 Miss Utility 1-553-0100
 C. & P. Telephone 725-9976
 A.T. & T. Cable Location Division 393-9553
 Colonial Pipeline Co. 781-4641
 Howard Co. D.P.W. - Bureau of Utilities 992-2366
- Trees & shrubs are to be protected from damage to maximum extent. Trees and shrubs located within the Construction strip are not to be removed or damaged by the Contractor.
- Contractor shall remove trees, stumps & roots along line of excavation as directed by Engineer. Cost shall be included in cost of construction of the main.
- Place regulation "man working" and warning signs as required to comply with Md. S.H.A. Manual of Traffic Control for Highway Construction and Maintenance Operations.
- All water mains to be D.I.P. unless otherwise noted.
- All mains to have minimum 3 1/2' cover.
- Valves shall be strapped.
- Block all fittings with concrete.
- Bury line elevations on fire hydrants shall be set to the elevations shown on the mains. All hydrants shall be strapped and buttressed w/ concrete as per std. details. Soil around F.H. to be compacted in accordance w/ Sec. 37.01 & 37.05 of the Std. Specifications.
- Contractor shall not operate any water valves on the existing mains.



B.M. #1 Howard Co. Mon. #2244003-R
Concrete Mon. in Island N.W. Corner Rts 1 & 175
Elev. 231.78

QUANTITIES			
ITEM	BID	AS-BUILT	MATERIAL/SUPPLIER
6" Water L.F.	134	134	CLOW
12" G.T. Sew. Ea.	1	1	CLOW
Fire Hydrant Ea.	1	1	DRESSER
1 1/2" W.H.C. L.F.	68'		

NOTE: PRIOR TO ANY CONSTRUCTION A TEST PIT IS REQUIRED TO VERIFY LOCATION OF EX. 30" G. SEE NOTE NO. 9 OF GENERAL NOTES.



REVIEWED FOR HOWARD SOIL CONSERVATION DISTRICT AND MEETS TECHNICAL REQUIREMENTS
 SIGNATURE: [Signature] DATE: 11-9-83
 U.S. SOIL CONSERVATION SERVICE
 This Development Plan is approved for Soil Erosion and Sediment Control by the Howard County Conservation District.
 APPROVED: [Signature] DATE: 11-9-83
 HOWARD S.C.D.

Sediment Control Measures for this Contract will be implemented in accordance with Article 15 of the Standard Specifications and SDP 84-45.

DEPARTMENT OF PUBLIC WORKS
HOWARD COUNTY, MARYLAND
 Director of Public Works: [Signature] DATE: 11-12-83
 Chief, Bureau of Engineering: [Signature] DATE: 11-12-83
 Chief, Bureau of Utilities: [Signature] DATE: 11-12-83
 Chief, Land Development Div.: [Signature] DATE: 11-12-83

ENGINEER
HUDKINS ASSOCIATES INC.
231 JOSEPH SQUARE
COLUMBIA, MARYLAND 21044
730-9060
 [Signature] DATE: 11/1/83

DES:	H.A.	1	ADDED GBLF 1 1/2" W.H.C.	11-10-83
DRN:				
CHK:				
DATE:	BY	NO.	REVISION	DATE

PLAN & PROFILE OF WATER MAIN EXTENSION
 600' SCALE MAP NO. 43 BLOCK NO. 2

MARKET PLACE
PARCEL B
FIRST ELECTION DISTRICT
CONTRACT NO. 44-1169-D
 SCALE AS SHOWN
 SHEET 1 OF 1