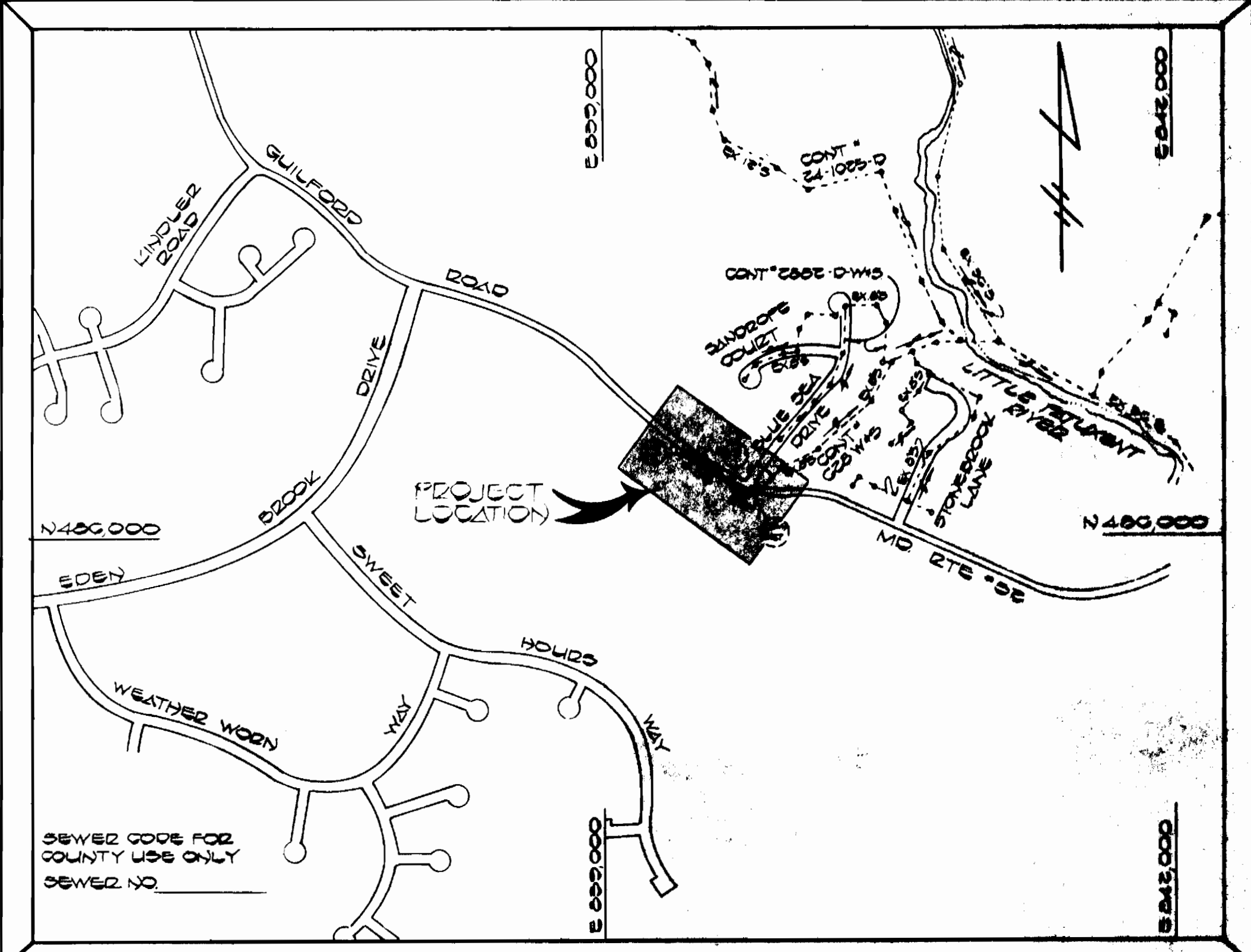


BENCH MARKS

B.M.#1	ELEV 332.10
2.2 SPIKE SET ON ROAD SIDE OF B.G. POLE #433832	
150' NORTHWEST OF HO CO MON #2240001-2	
B.M.#2	ELEV 342.77
2.2 SPIKE SET ON ROAD SIDE OF B.G. POLE #201011	
25' NORTHWEST OF TRAVERSE STA 'G-2'	



VICINITY MAP
SCALE: 1"=600'

TYPE OF BUILDINGS:	SINGLE FAMILY
NUMBER OF PARCELS:	1
NUMBER OF SEWER HOUSE CONNS:	1
DRAINAGE AREA:	LITTLE PASTURE

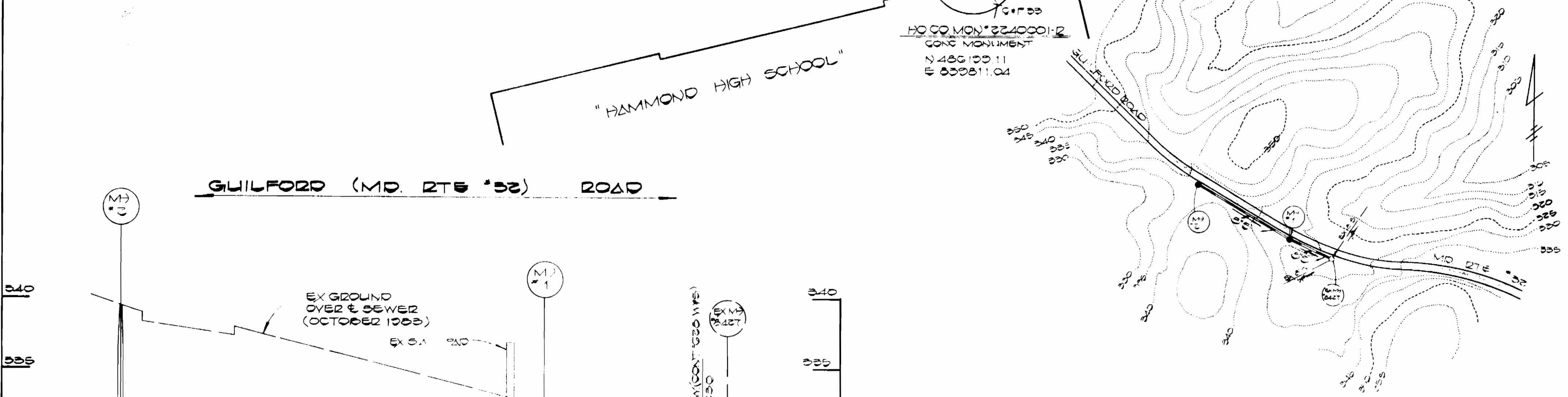
GENERAL NOTES

- APPROXIMATE LOCATION OF EXISTING MAINS ARE SHOWN. THE CONTRACTOR SHALL TAKE ALL NECESSARY PRECAUTIONS TO PROTECT EXISTING MAINS AND SERVICES AND MAINTAIN UNINTERRUPTED SERVICE. ANY DAMAGE INCURRED SHALL BE REPAIRED IMMEDIATELY TO THE SATISFACTION OF THE ENGINEER AT THE CONTRACTOR'S EXPENSE.
- ALL HORIZONTAL CONTROLS ARE BASED ON MARYLAND STATE COORDINATES.
- ALL VERTICAL CONTROLS ARE BASED ON U.S.G.S. DATUM.
- ALL PIPE ELEVATIONS SHOWN ARE INVERT ELEVATIONS.
- CLEAR ALL UTILITIES BY A MINIMUM OF 6" CLEAR ALL POLES BY 2'-0" MINIMUM OR TUNNEL AS REQUIRED. ANY COST INCURRED TO THE CONTRACTOR FOR TUNNELING OR BRACING AT THE POLE SHALL BE INCLUDED IN UNIT PRICES BID FOR CONSTRUCTION OF THE MAIN.
- FOR DETAILS NOT SHOWN ON THE DRAWINGS USE HOWARD COUNTY STANDARDS DETAILS.
- FOR MATERIAL AND CONSTRUCTION METHODS USE HOWARD COUNTY STANDARD SPECIFICATIONS.
- CONTRACTOR SHALL LOCATE EXISTING UTILITIES A MINIMUM OF (2) WEEKS IN ADVANCE OF CONSTRUCTION OPERATIONS IN THE VICINITY OF PROPOSED UTILITIES AT HIS OWN EXPENSE.
- CONTRACTOR SHALL NOTIFY THE FOLLOWING UTILITIES OR AGENCIES AT LEAST FIVE (5) WORKING DAYS BEFORE STARTING WORK SHOWN ON THESE PLANS:
BALTIMORE GAS & ELECTRIC COMPANY - UNDERGROUND GAS DISTRIBUTION CUSTOMER SERVICE: 685-0123
STATE HIGHWAY ADMINISTRATION - (383-4435)
BALTIMORE GAS & ELECTRIC COMPANY - UNDERGROUND ELECTRIC DISTRIBUTION
CUSTOMER SERVICE: 685-0123
MISS UTILITY: 1-559-0100
CHESAPEAKE & POTOMAC TELEPHONE COMPANY: 725-9976
BUREAU OF UTILITIES - HOWARD COUNTY 392-2366
- TREES ARE TO BE PROTECTED FROM DAMAGE TO MAXIMUM EXTENT. TREES LOCATED WITHIN THE CONSTRUCTION STRIP ARE NOT TO BE REMOVED OR DAMAGED BY THE CONTRACTOR.
- CONTRACTOR SHALL REMOVE TREES, STUMPS AND ROOTS ALONG LINE OF EXCAVATION AS DIRECTED BY THE ENGINEER. PAYMENT FOR SUCH REMOVAL SHALL BE INCLUDED IN THE UNIT PRICE BID FOR CONSTRUCTION OF THE MAIN.
- PLACE REGULATION MEN WORKING AND WARNING SIGNS AS REQUIRED TO COMPLY WITH MARYLAND STATE HIGHWAYS ADMINISTRATION MANUAL OF TRAFFIC CONTROL FOR HIGHWAY CONSTRUCTION AND MAINTENANCE OPERATIONS.
- ALL SEWER MAINS SHALL BE HDPE, C.S.P.X., R.C.S.P., P.V.C., V.C.P.X. OR A.C.P. CLASS 2400 UNLESS OTHERWISE NOTED.
- CONTRACTOR SHALL PROVIDE A JOINT IN ALL SEWER MAINS WITHIN 2'-0" OF EXTERIOR MANHOLE WALLS.
- ALL MANHOLES SHALL BE 4'-0" INSIDE DIAMETER, UNLESS OTHERWISE NOTED.
- MANHOLES SHOWN WITH 12" AND 16" WALLS ARE BRICK MANHOLES ONLY.

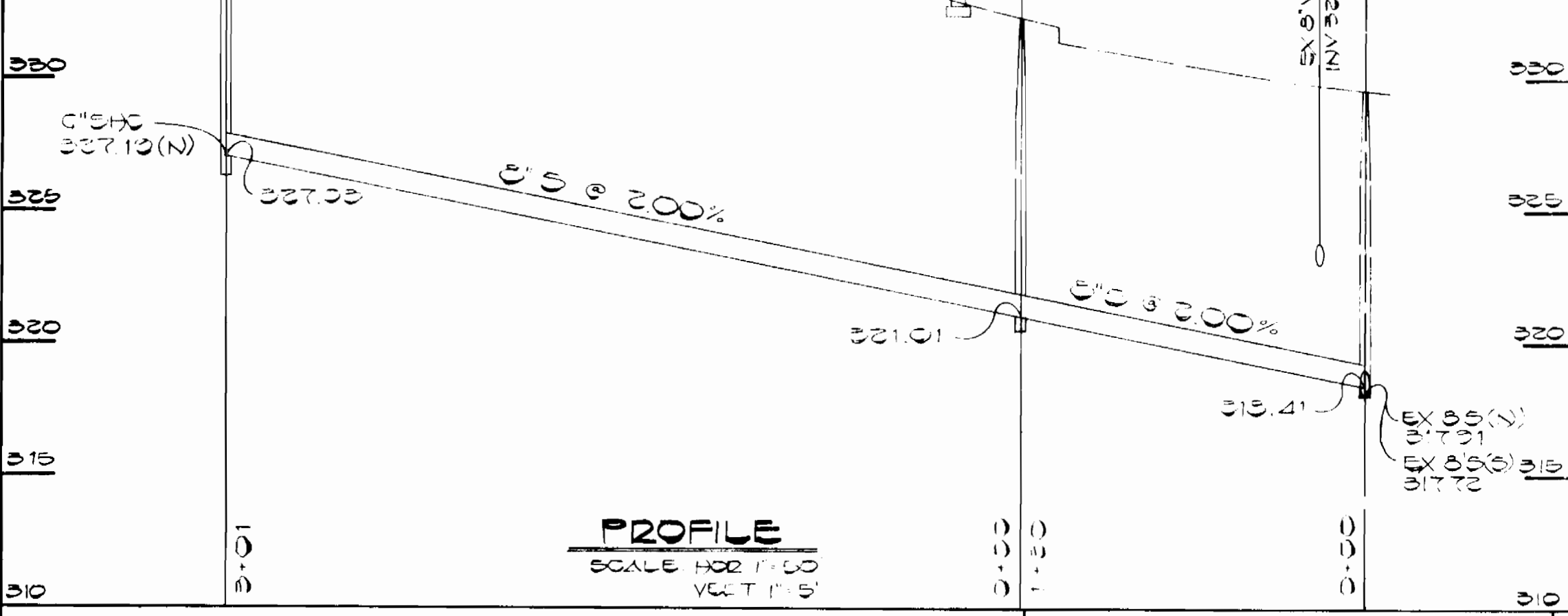
MANHOLE LOCATIONS

M#1	128' FROM MON #2240001-2 TO G-2	5' W/ LT
M#2	0' FROM G-2 TO MON #2240001-2	11' W/ LT

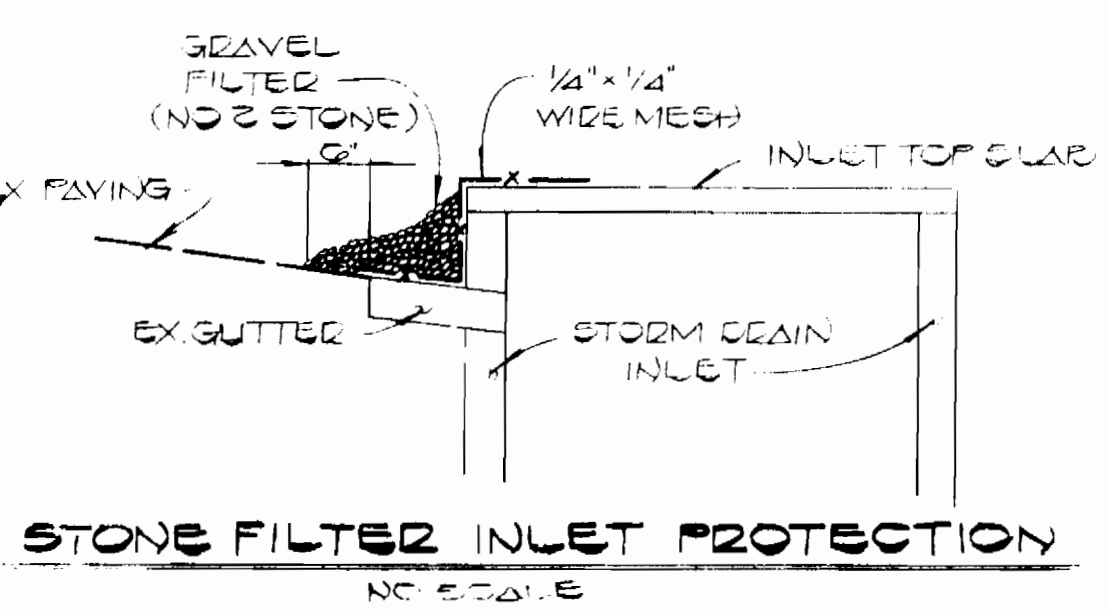
PLAN
SCALE: 1"=50'



DRAINAGE AREA MAP
SCALE: 1"=200'



PROFILE
SCALE: HOR: 1"=50', VERT: 1"=5'



STONE FILTER INLET PROTECTION
NO. 5021-B

QUANTITIES

ITEM	EST'D	AS-BUILT	SUPPLIER
6" SEWER	421 L.F.		
8" SEWER	45 L.F.		
MANHOLES	2 EA		

THIS PLAN IS APPROVED FOR EROSION AND SEDIMENT CONTROL BY THE HOWARD COUNTY SOIL CONSERVATION DISTRICT APPROVED: *[Signature]* DATE: 11/16/83
HOWARD COUNTY SOIL CONSERVATION DISTRICT DATE: _____
SEDIMENT CONTROL MEASURES FOR THIS CONTRACT WILL BE IMPLEMENTED IN ACCORDANCE WITH ARTICLE 18 OF THESE SPECIFICATIONS REVIEWED FOR HOWARD COUNTY SOIL CONSERVATION DISTRICT AND MEETS TECHNICAL REQUIREMENTS APPROVED: *[Signature]* DATE: 11/16/83
U.S. SOIL CONSERVATION SERVICE DATE: _____

DEPARTMENT OF PUBLIC WORKS HOWARD COUNTY, MARYLAND DIRECTOR OF PUBLIC WORKS: <i>[Signature]</i> DATE: 11/16/83 CHIEF, BUREAU OF UTILITIES: <i>[Signature]</i> DATE: 11/16/83		FISHER, COLLINS, AND CARTER, INC. CONSULTING ENGINEERS AND LAND SURVEYORS 8388 COURT AVENUE ELLICOTT CITY, MARYLAND 21043 461-2855 TERRELL A. FISHER DATE: _____		DES: D.B.S. DRN: DBS CHK: TAF DATE: 10-12-83		GUILFORD ROAD SEWER MAIN PLAN, PROFILE AND DETAILS SEWER MAIN CAPITAL PROJECT NO. S-6684 CONTRACT NO. 20-1162 SIXTH ELECTION DISTRICT HOWARD COUNTY, MARYLAND SCALE AS SHOWN SHEET 1 OF 1	
--	--	--	--	---	--	---	--