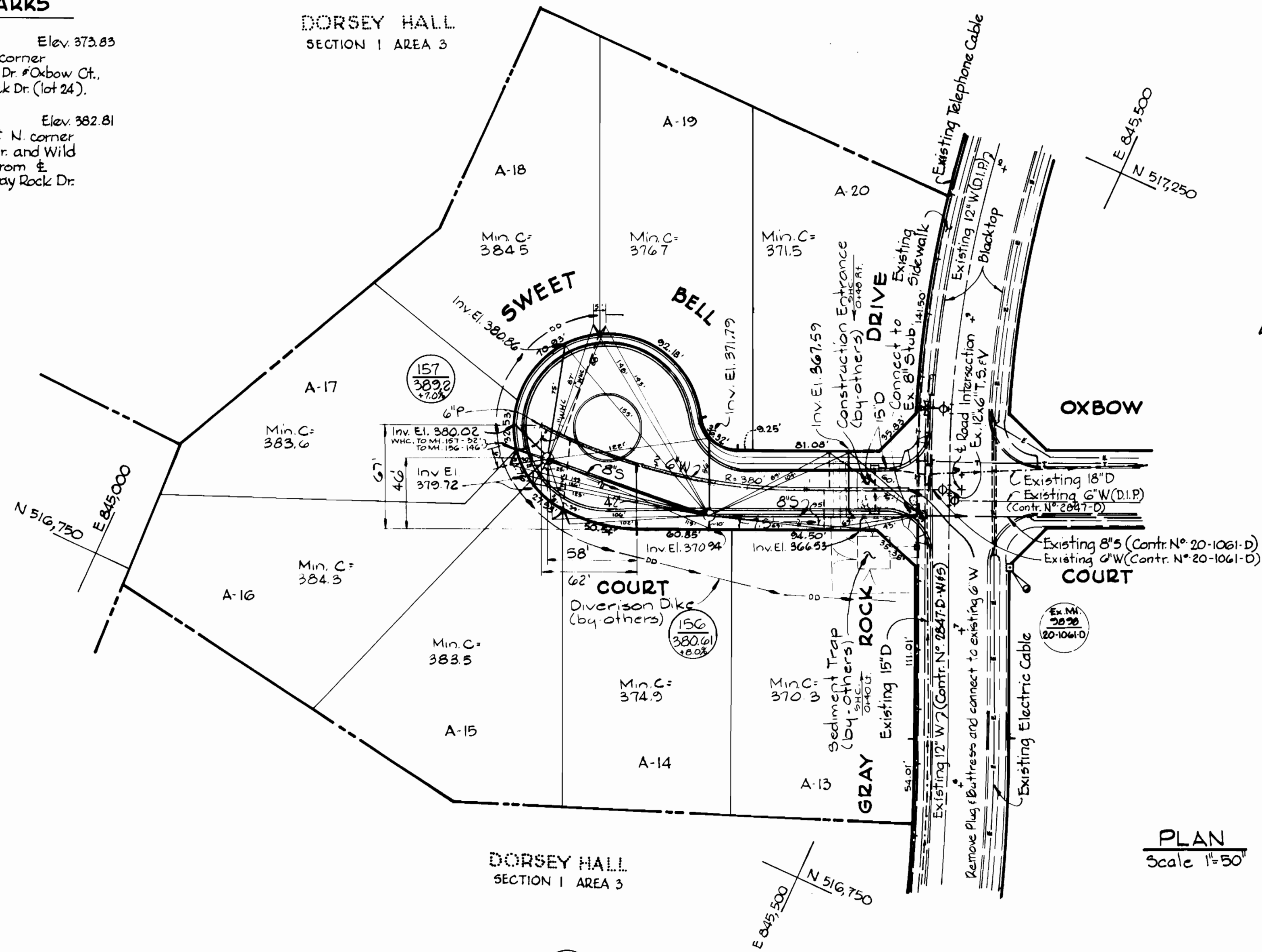


BENCH MARKS

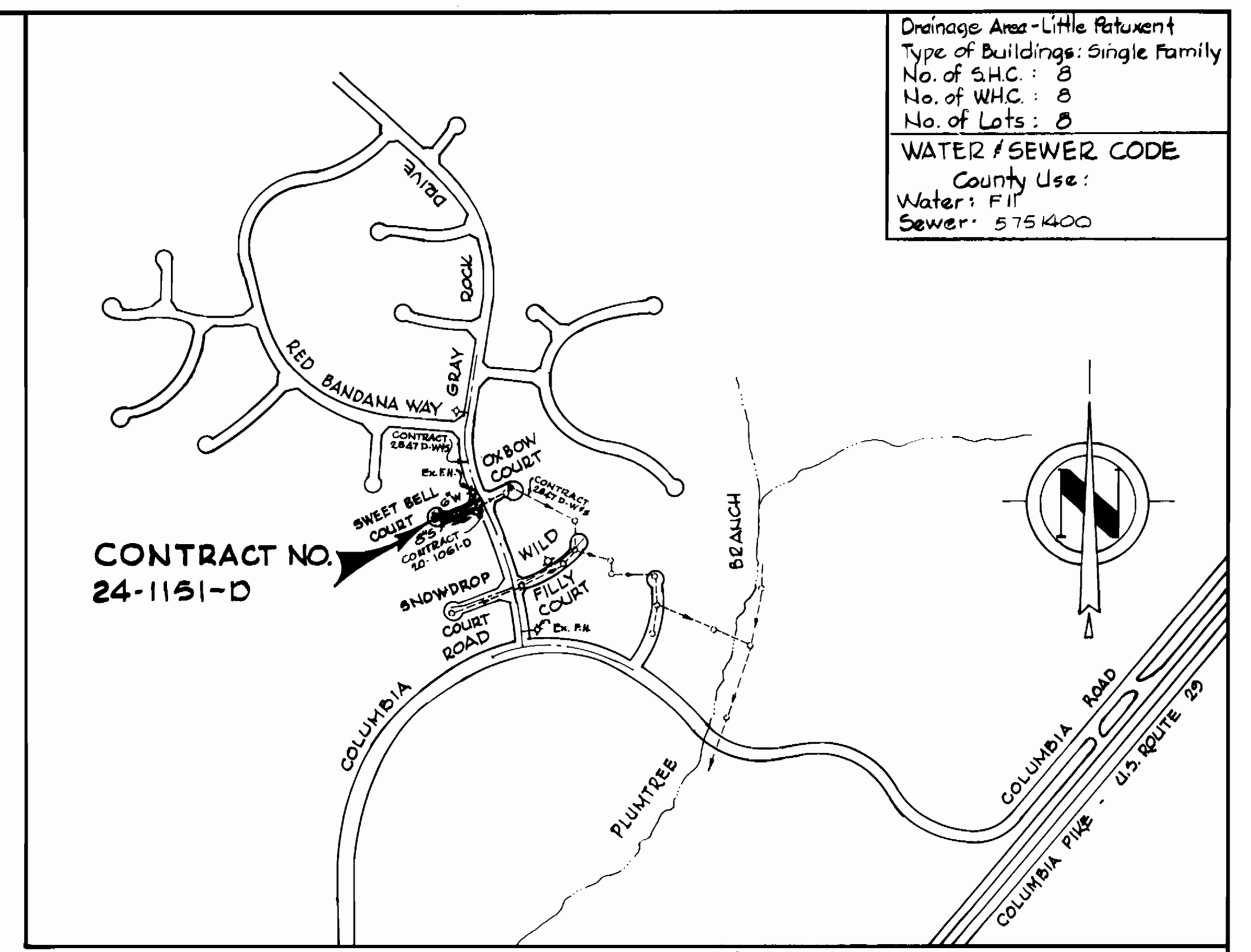
WR#A B.M.* "OXBOW" Elev. 373.83
 Concrete Monument S.E. corner
 intersection of Gray Rock Dr. & Oxbow Ct.,
 located 30' E. of Gray Rock Dr. (lot 24).

WR#A B.M.* Conc. Mon. Elev. 382.81
 Concrete Monument 60'± N. corner
 intersection Gray Rock Dr. and Wild
 Filly Ct., approx. 55' N. from E.
 Wild Filly Ct., 30' E. of Gray Rock Dr.

**DORSEY HALL
 SECTION 1 AREA 3**



PLAN
 Scale 1"=50'



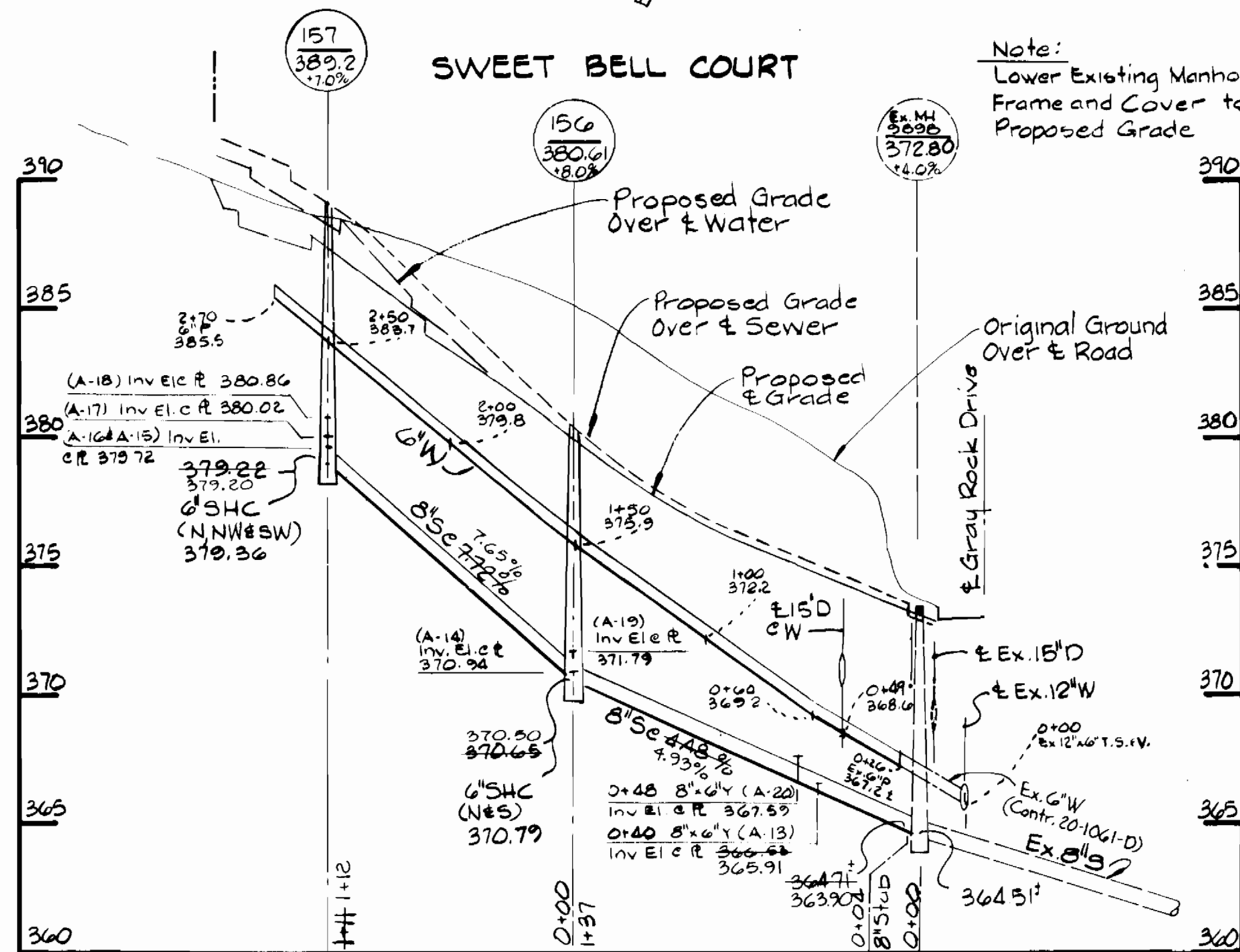
VICINITY MAP

Scale: 1"=600'

GENERAL NOTES

- APPROXIMATE LOCATION OF EXISTING MAINS ARE SHOWN. THE CONTRACTOR SHALL TAKE ALL NECESSARY PRECAUTIONS TO PROTECT EXISTING MAINS AND SERVICES AND MAINTAIN UNINTERRUPTED SUPPLY. ANY DAMAGE INCURRED SHALL BE REPAIRED IMMEDIATELY TO THE SATISFACTION OF THE ENGINEER, AT THE CONTRACTOR'S EXPENSE.
- ALL HORIZONTAL CONTROLS ARE BASED ON MARYLAND STATE COORDINATES.
- ALL VERTICAL CONTROLS ARE BASED ON U.S.G.S. DATUM.
- ALL PIPE ELEVATIONS SHOWN ARE INVERT ELEVATIONS.
- CLEAR ALL UTILITIES BY A MINIMUM OF 6". CLEAR ALL POLES BY 2'-0" MINIMUM OR TUNNEL AS REQUIRED. ANY COST INCURRED TO THE CONTRACTOR FOR TUNNELING OR BRACING AT POLES SHALL BE INCLUDED IN UNIT PRICES BID FOR CONSTRUCTION OF THE MAIN.
- FOR DETAILS NOT SHOWN ON THE DRAWINGS USE HOWARD COUNTY STANDARD DETAILS.
- FOR MATERIALS AND CONSTRUCTION METHODS USE HOWARD COUNTY STANDARD SPECIFICATIONS.
- CONTRACTOR SHALL LOCATE EXISTING UTILITIES A MINIMUM OF TWO (2) WEEKS IN ADVANCE OF CONSTRUCTION OPERATIONS IN THE VICINITY OF PROPOSED UTILITIES AT HIS OWN EXPENSE.
- CONTRACTOR SHALL NOTIFY THE FOLLOWING UTILITIES OR AGENCIES AT LEAST FIVE (5) WORKING DAYS BEFORE STARTING WORK SHOWN ON THESE PLANS:
 BALTIMORE GAS AND ELECTRIC COMPANY - UNDERGROUND ELECTRIC DISTRIBUTION CUSTOMER SERVICE - 685-0123.
 BALTIMORE GAS AND ELECTRIC COMPANY - UNDERGROUND GAS DISTRIBUTION CUSTOMER SERVICE - 685-0123.
 ENGINEERING - "DAMAGE CONTROL" - 234-5621.
 "MISS UTILITY" - 1 - 559-0100
 CHESAPEAKE AND POTOMAC (C&P) TELEPHONE COMPANY - 725-9976
 BUREAU OF UTILITIES HOWARD COUNTY - 992-2366
- PLACE REGULATION "MEN WORKING" AND WARNING SIGNS AS REQUIRED TO COMPLY WITH MARYLAND STATE HIGHWAY ADMINISTRATION MANUAL OF TRAFFIC CONTROL FOR HIGHWAY CONSTRUCTION AND MAINTENANCE OPERATIONS.
- ALL WATER MAINS SHALL BE D.I.P. UNLESS OTHERWISE NOTED.
- TOP OF ALL WATER MAINS SHALL HAVE A MINIMUM OF 3-1/2' COVER UNLESS OTHERWISE NOTED.
- BLOCK ALL FITTINGS WITH CONCRETE.
- ALL WATER HOUSE CONNECTIONS SHALL BE FOR AN INSIDE METER SETTING.
- ALL WATER HOUSE CONNECTIONS SHALL BE 3/4" DIAMETER UNLESS OTHERWISE NOTED.
- THE CONTRACTOR SHALL NOT OPERATE ANY WATER MAIN VALVES ON THE EXISTING SYSTEM.
- ALL SEWER MAINS SHALL BE C.S.P.X., V.C.P.X., A.C.P. CLASS 2400 OR PVC. UNLESS OTHERWISE NOTED.
- THE CONTRACTOR SHALL PROVIDE A JOINT IN ALL SEWER MAINS WITHIN 2'-0" OF EXTERIOR MANHOLE WALL.
- ALL MANHOLES SHALL BE 4'-0" INSIDE DIAMETER, UNLESS OTHERWISE NOTED.
- ALL COPPER WATER HOUSE CONNECTIONS SHALL UTILIZE FLARED FITTINGS.

QUANTITIES			
ITEM	QTY	AS-BUILT	MATERIAL/SUPPLIER
6" Water L.F.	246	244 LF	DIP / US PIPE
12" T.S.W. Each	1		
8" Sewer L.F.	250	241 LF	PVC PIPE / ETI
Manholes Each	2	2	PRECAST ATLANTIC / PRECAST
1" Corporation Each		3	
3/4" Corporation Each		2	
1" Copper Tube L.F.		135 LF	HOWELL CORP.
3/4" Copper Tube L.F.		102 LF	HOWELL CORP.



PROFILE
 Horizontal: 1"=50'
 Vertical: 1"=5'

REVIEWED FOR HOWARD SOIL CONSERVATION DISTRICT AND MEETS TECHNICAL REQUIREMENT

James M. Klein 10-5-83
 SIGNATURE DATE
U.S. SOIL CONSERVATION SERVICE

This Development Plan is approved for Soil Erosion and Sediment Control by the Howard County Conservation District.

APPROVED:
Howard S.C.D. 10-3-83
 HOWARD S.C.D. DATE

Sediment Control Measures for this Contract will be implemented in accordance with Article 15 of the Standard Specifications and F-84-85.

**DEPARTMENT OF PUBLIC WORKS
 HOWARD COUNTY, MARYLAND**

James M. Klein 10-5-83
 DIRECTOR OF PUBLIC WORKS - DATE

William J. ... 10-7-83
 CHIEF - BUREAU OF ENGINEERING - DATE

**WHITMAN, REQUARDT
 AND ASSOCIATES
 ENGINEERS**
 2315 ST PAUL ST.
 BALTIMORE, MARYLAND



DES:	
DRN:	
CHK:	
DATE:	
BY:	NO.
REVISION:	
DATE:	

**PLAN & PROFILE OF
 WATER & SEWER MAINS**

600' SCALE MAP NO. 24 BLOCK NO.

**DORSEY HALL
 SECTION 1, AREA 3
 ELECTION DISTRICT NO. 2
 CONTRACT NO. 24-1151-D**

SCALE
 AS
 SHOWN

SHEET
 1 OF 1