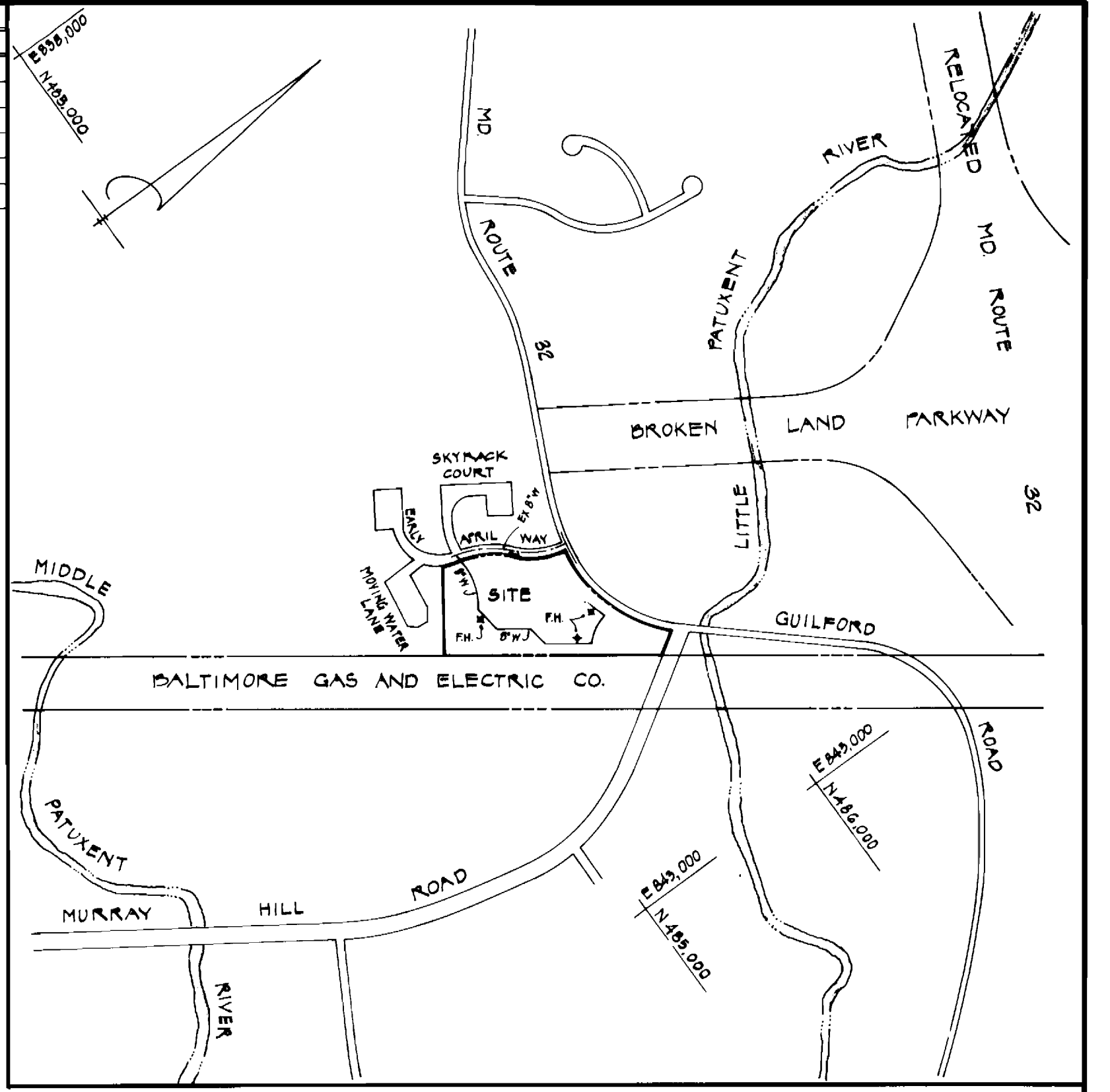


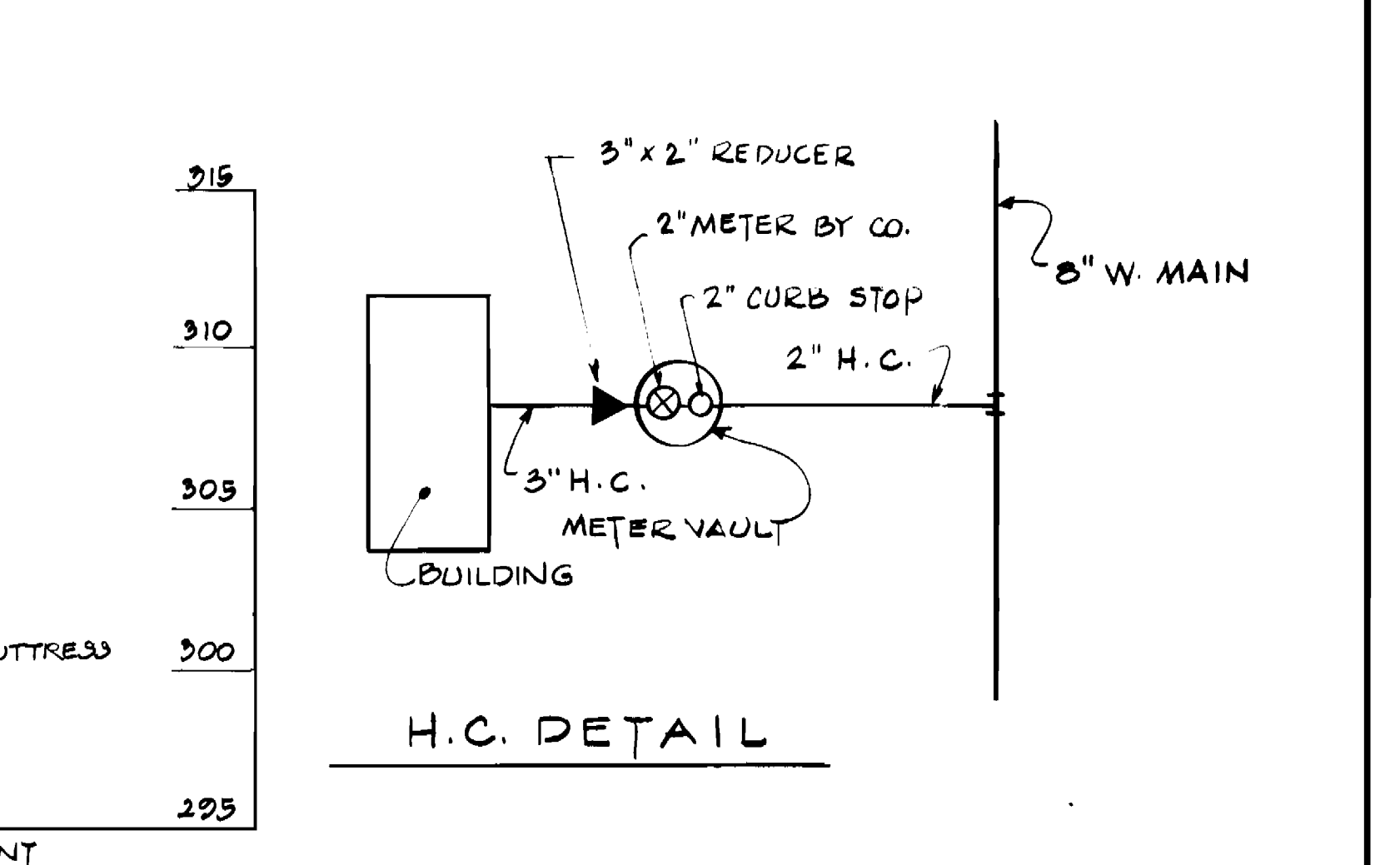
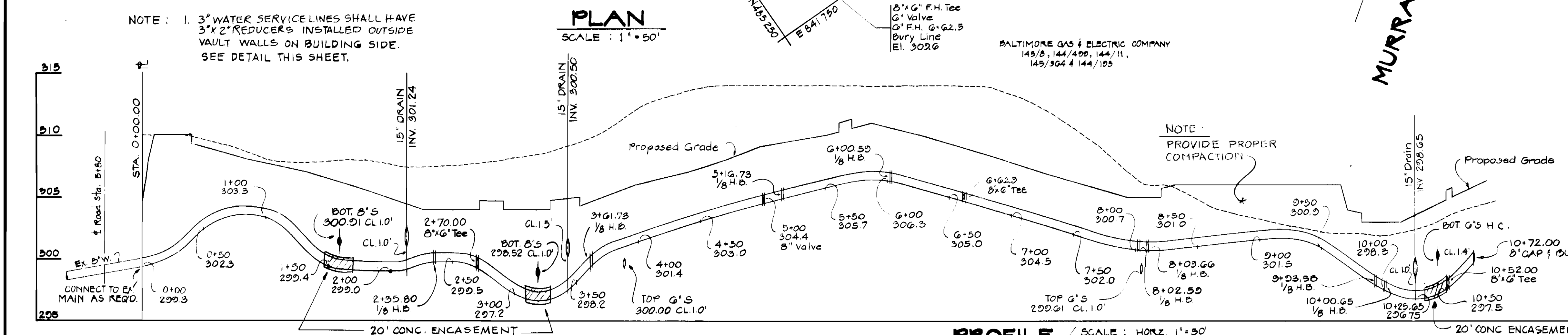
ITEM	ESTIMATED	AS BUILT	MATERIAL / SUPPLIER
8" Water	1072.00'	1,072.0'	GRIFFIN PIPE CO.
6" Water	25.00'	14'	GRIFFIN PIPE CO.
3" Water	2.50'	2.50'	REVERE COPPER
8" Valve	1	1	BELAIR ROAD SUPPLY
6" Valve	3	3	BELAIR ROAD SUPPLY
F.H.	3	3	MUELLER CO.
2" METERS	9	9	



LOCATION PLAN
SCALE: 1"=600'

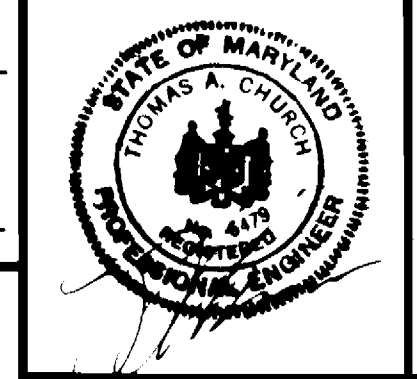
TYPE OF BUILDINGS : APARTMENTS
NUMBER OF LOTS : SITE ACREAGE 9.064 AC.
NUMBER OF WATER HOUSE CONNECTIONS : 9
DRAINAGE AREA : MIDDLE PATUXENT
NUMBER OF UNITS : 168

WATER CODE : E-16
SEWER CODE : G290000



- GENERAL NOTES**
- Approximate locations of existing mains are shown. The contractor shall take all precautions to protect existing mains and services & maintain uninterrupted supply. Any damage incurred will be repaired immediately.
 - All water pipe elevations shown are invert elevations.
 - All horizontal controls are based on Maryland State coordinates.
 - All vertical controls are based on U.S.G.S. datum.
 - All WATER HOUSE CONNECTIONS UTILIZED FLANGE TYPE FITTINGS.
 - The contractor shall notify the following utilities or agencies at least 5 days before starting work on this plan: Baltimore Gas & Electric
- | | |
|--|----------|
| Underground gas distribution engineering | 685-0123 |
| Underground electric distribution engineering | 685-0123 |
| Engineering damage control | 234-5621 |
| C&P Telephone Company | 725-9976 |
| State highways administration | 531-5533 |
| "Miss Utility" | 559-0100 |
| American Telephone & Telegraph Cable location division | 993-3553 |
| Bureau of Utilities Howard County | 992-2366 |
- Clear all utilities by a minimum of 10'. Clear all poles by 2'-0" minimum or tunnel as required.
 - Cost incurred to the contractor for tunneling or bracing of poles shall be included in unit prices bid for excavation and backfill.
 - For details not shown on the drawings use Howard County Standard Details. (Volume IX)
 - For materials and construction methods, use Howard County Standard Specifications.
 - Contractor shall locate existing utilities a minimum of two (2) weeks in advance of construction operations in the vicinity of proposed utilities at his own expense.
 - Trees are to be protected from damage to maximum extent. Trees located within the construction strip are not to be removed or damaged by the contractor.
 - Contractor shall remove trees, stumps and roots along line of excavation as directed by the engineer. Payment for such removal shall be included in the unit price bid for excavation and backfill.
 - Place regulation "MEN WORKING" and warning signs as required to comply with Maryland State Highway Administration Manual of traffic control for highway construction and maintenance operations.
 - All water mains to be ductile iron pipe unless otherwise noted.
 - Top of all water mains to have a minimum of 3 1/2' cover unless otherwise noted.
 - Valves adjacent to tees shall be strapped to tees.
 - Block all fittings with concrete.
 - Bury line elevations on fire hydrants shall be set to the elevations shown on the drawings. All fire hydrants shall be strapped and buttressed with concrete in accordance with standard details. Soil around the fire hydrant to be compacted in accordance with sections 97-01 : 97-05 of the standard specifications.
 - All water house connections shall be for an outside meter setting.
 - The contractor shall not operate any water main valves on the existing system.
 - Water main/water house connections shall pass at least one (1) foot over sewer house connections.

10-28-83	ENCASE ADDED - 2" H.C. ADDED	QCB
DATE	REVISION	BY
REVIEWED FOR H.C. DIST & MEETS TECHNICAL REQUIREMENTS		
<i>James M. Nelson</i>	7-80-83	DATE
U.S. SOIL CONSERVATION SERVICE		
THIS DEVELOPMENT PLAN IS APPROVED FOR SOIL EROSION & SEDIMENT CONTROL BY THE HOWARD SOIL CONSERVATION DISTRICT		
<i>W. F. Nelson</i>	7-80-83	DATE
SOIL CONSERVATION DISTRICT		
DEPARTMENT OF PUBLIC WORKS HOWARD COUNTY, MARYLAND		
<i>W. F. Nelson</i>	7-80-83	DATE
DIRECTOR OF PUBLIC WORKS		
<i>Robert M. Jones</i>	7-80-83	DATE
CHIEF, BUREAU OF UTILITIES		
<i>W. F. Nelson</i>	7-80-83	DATE
CHIEF, LAND DEVELOPMENT DIVISION		



KIDDE CONSULTANTS, INC.
CONSULTING ENGINEERS
1020 CROMWELL BRIDGE ROAD — BALTIMORE MARYLAND, 21204

CONTRACT NO. 34-1140

PLAN & PROFILE
PUBLIC WATER MAINS
& SANITARY SEWER

KING'S CROSSING
VILLAGE OF KING'S CONTRIVANCE : SECTION 3 AREA 2
PARCEL 'A'
ELECTION DISTRICT G JULY 20, 1983
HOWARD COUNTY, MD.

DRAWING NO. 1 OF 1
SCALE AS SHOWN
DES. K.B.H.
DWN. K.B.H.
CHK. R.G.B.