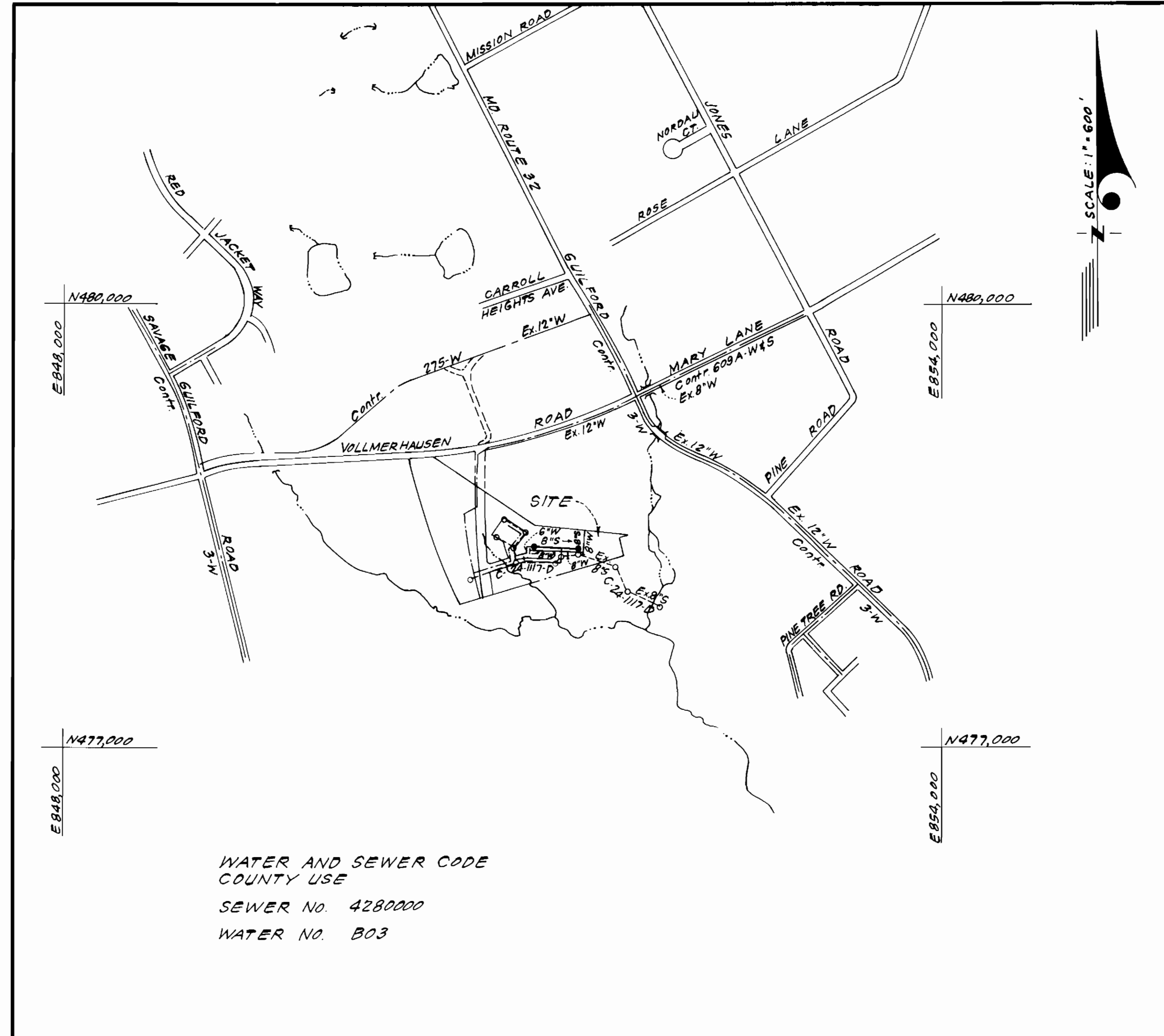


TYPE OF BUILDING	Townhouses
NUMBER OF LOTS	40
NUMBER OF SHC'S	20
NUMBER OF WHC'S	36
DRAINAGE AREA	Little Patuxent



WATER AND SEWER CODE
COUNTY USE
SEWER NO. 4280000
WATER NO. B03

VICINITY MAP

GENERAL NOTES

- Approximate location of existing mains are shown. The contractor shall take all necessary precautions to protect existing mains and services and maintain uninterrupted supply. Any damage incurred shall be repaired immediately to the satisfaction of the Inspector, at the contractor's expense.
- All horizontal controls are based on Maryland State Coordinates.
- All vertical controls are based on U.S.G.S. Datum.
- All pipe elevations shown are invert elevations.
- Clear all utilities by a minimum of 6" clear all poles by 2'-0" minimum or tunnel as required. Any cost incurred to the contractor for tunneling or bracing at poles shall be included in unit prices bid for excavation and backfill.
- For details not shown on the drawings use Howard County Standard Details.
- For materials and construction methods use Howard County Standard Specifications.
- Contractor shall locate existing utilities a minimum of two (2) weeks in advance of construction operations in the vicinity of proposed utilities at his own expense.
- Contractor shall notify the following utilities or agencies at least five (5) working days before starting work shown on these plans.
 - State Highway Administration - 531-5533
 - Baltimore Gas & Electric Company - Underground Electric Distribution Customer Service - 685-0123
 - Baltimore Gas & Electric Company - Underground Gas Distribution Customer Service - 685-0123
 - Engineering - Damage Control - 234-5621
 - "Miss Utility" - 1-559-0100
 - Chesapeake & Potomac (C & P) Telephone Company - 725-9976
 - American Telephone and Telegraph - Cable Location Division - 393-3553
 - Colonial Pipeline Company - 781-4641
 - Bureau of Utilities Howard County - 992-2366
- Trees are to be protected from damage to maximum extent. Trees located within the construction strip are not to be removed or damaged by the contractor.
- Contractor shall remove trees, stumps, and roots along line of excavation as directed by the Inspector. Payment for such removal shall be included in the unit price bid for excavation and backfill.
- Place regulation "Men Working" and warning signs as required to comply with Maryland State Highway Administration Manual of Traffic Control for Highway Construction and Maintenance Operations.
- All water mains to be C.I.P. or D.I.P. unless otherwise noted.
- Top of all water mains to have a minimum of 3-1/2' cover unless otherwise noted.
- Valves adjacent to tees shall be strapped to tees.
- Block all fittings with concrete.
- Bury line elevations on fire hydrants shall be set to the elevations shown on the drawings. All fire hydrants shall be strapped and buttressed with concrete in accordance with standard details. Soil around the fire hydrant to be compacted in accordance with Sections 3701 & 3707 of the Standard Specifications.
- All water house connections shall be for an inside meter setting.
- The contractor shall not operate any water main valves on the existing system.
- All sewer mains shall be C.S.P.X., V.C.P.X., P.V.C., or A.C.P. Class 2400 unless otherwise noted.
- The contractor shall provide a joint in all sewer mains within 2'-0" of exterior manhole wall.
- All manholes shall be 4'-0" inside diameter, unless otherwise noted.
- Water main and water house connection lines must have a minimum of one foot separation from the sanitary sewer and sewer house connections as they cross. Except at crossings, water and sewer lines shall have a minimum horizontal separation of 10'.
- For all Copper Water House Connections, utilize flared type fittings only.

CONTRACT NO. 24-II48D
ASBURY WOODS
SECTION ONE AREA TWO
HOWARD COUNTY, MARYLAND
DEPARTMENT OF PUBLIC WORKS

Sediment Control Measures will be implemented in accordance with Article No. 15 of the Specifications & with Road Construction Plan F.94-27; Drawing 1, Sediment & Erosion Control.

REVIEWED FOR HOWARD SOIL CONSERVATION DISTRICT AND MEETS TECHNICAL REQUIREMENT.
 Signature: *[Signature]* DATE: 10-3-83
 U.S. SOIL CONSERVATION SERVICE

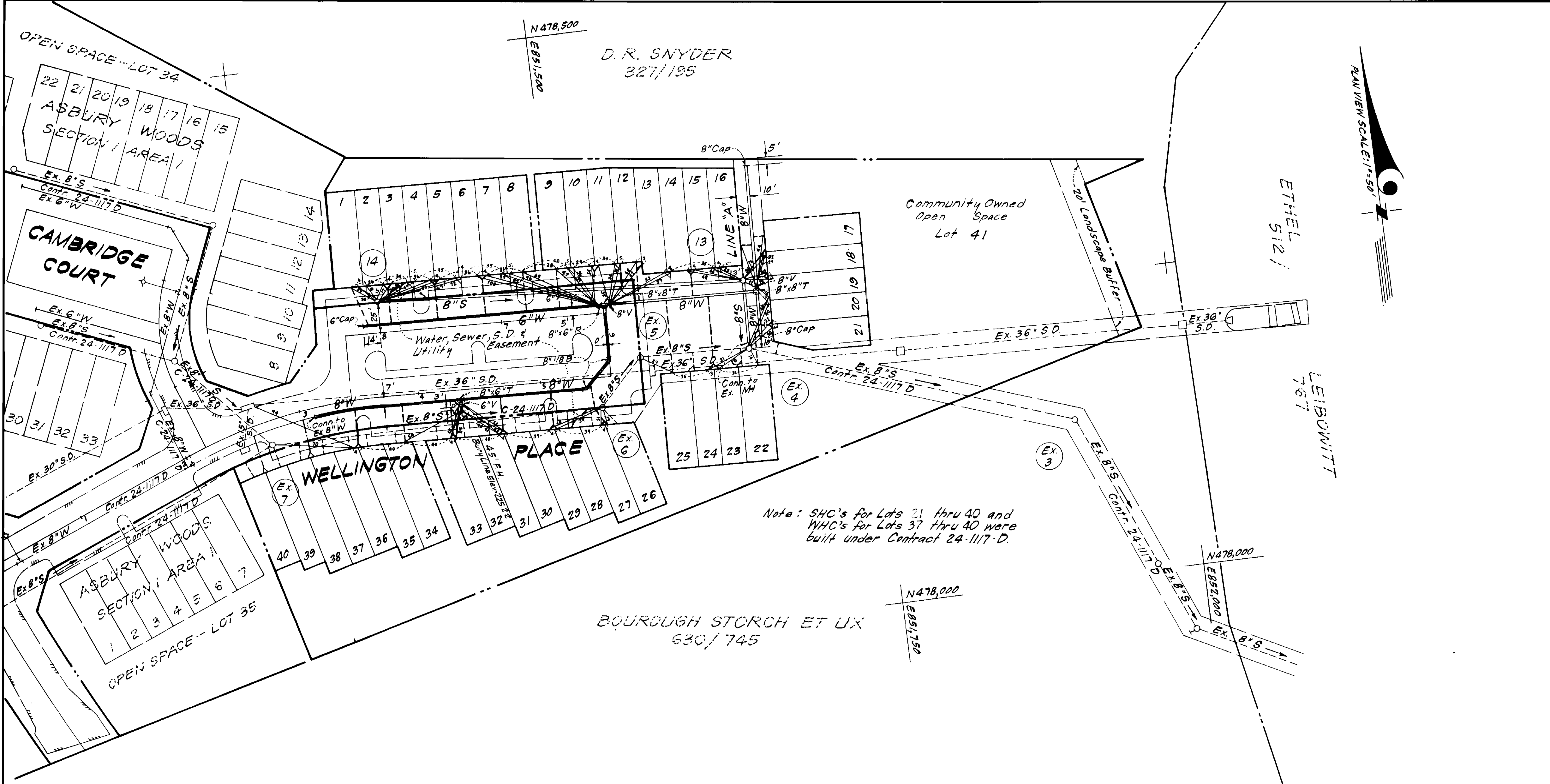
This Development Plan is approved for Soil Erosion and Sediment Control by the Howard Soil Conservation District.

APPROVED:
 Signature: *[Signature]* DATE: 10-3-83
 Howard S.C.D.

QUANTITIES			
ITEM	ESTM'D	AS-BUILT	MATERIAL/SUPPLIER
8"W	568 L.F.	568 L.F.	D.I.P./GRIFFIN PIPE PRODUCTS CO.
6"W	200 L.F.	200 L.F.	D.I.P./GRIFFIN PIPE PRODUCTS CO.
8"S	359 L.F.	359 L.F.	CLAY PIPE/LOGAN CLAY PROD. CO.
Manholes	2 EA.	2	PRECAST CONC./BIC UTILITY SUPPLY CO.
8"V	2 EA.	2	D.I.P./GRIFFIN PIPE PRODUCTS CO.
6"Vert. FHV	1 EA.	1	D.I.P./GRIFFIN PIPE PRODUCTS CO.
F.H.	1 EA.	1	D.I.P./GRIFFIN PIPE PRODUCTS CO.

ASBURY WOODS
SECTION ONE AREA TWO
LOTS 1 THRU 41

DEPARTMENT OF PUBLIC WORKS HOWARD COUNTY, MARYLAND Signature: <i>[Signature]</i> DATE: 10-7-83 DIRECTOR OF PUBLIC WORKS Signature: <i>[Signature]</i> DATE: 10-5-83 CHIEF, BUREAU OF UTILITIES	CLARK - FINEFROCK & SACKETT ENGINEERS - PLANNERS - SURVEYORS 11315 LOCKWOOD DRIVE, SILVER SPRING, MARYLAND 20904 (301) 593-3400		DES: C.K.G.	V.L.B.	1	Revised Lot numbers to agree with Record Plat.	10/21/83	TITLE SHEET	ASBURY WOODS SECTION ONE AREA TWO 6TH ELECTION DISTRICT CONTRACT NO. 24-II48D	SCALE AS SHOWN
			DRN: V.L.B.	CHK: C.K.G.	DATE: 8/83	BY: NO.	REVISION			DATE: 600'SCALE MAP NO. 47 BLOCK NO.



ELEVATIONS		
LOTS	SHCElev@R	Min Cellar
1/2	220.26	223.3
3/4	219.82	222.8
5/6	219.46	222.5
7/8	219.08	222.1
9/10	218.59	221.6
11/12	218.21	221.2
13/14	217.63	220.6
15/16	217.25	220.3
17/18	217.46	220.5
19/20	215.26	218.3
21	211.01	214.0
22/23	218.30	221.2
24/25	218.50	221.4
26	212.74	215.6
27	212.73	215.6
28	212.85	215.8
29	213.02	215.9
30	213.15	216.1
31	213.31	216.2
32	213.38	216.3
33	213.61	216.5
34	213.86	216.8
35	214.01	216.9
36	214.15	217.1
37	214.33	217.2
38	214.55	217.4
39	214.90	217.7
40	214.94	217.8

NOTE: Minimum cellar elevations were computed assuming a typical house location. Elevations should be verified with actual location at time of site plan preparation.

Note: SHC's for Lots 21 thru 40 and WHC's for Lots 37 thru 40 were built under Contract 24-1117-D.

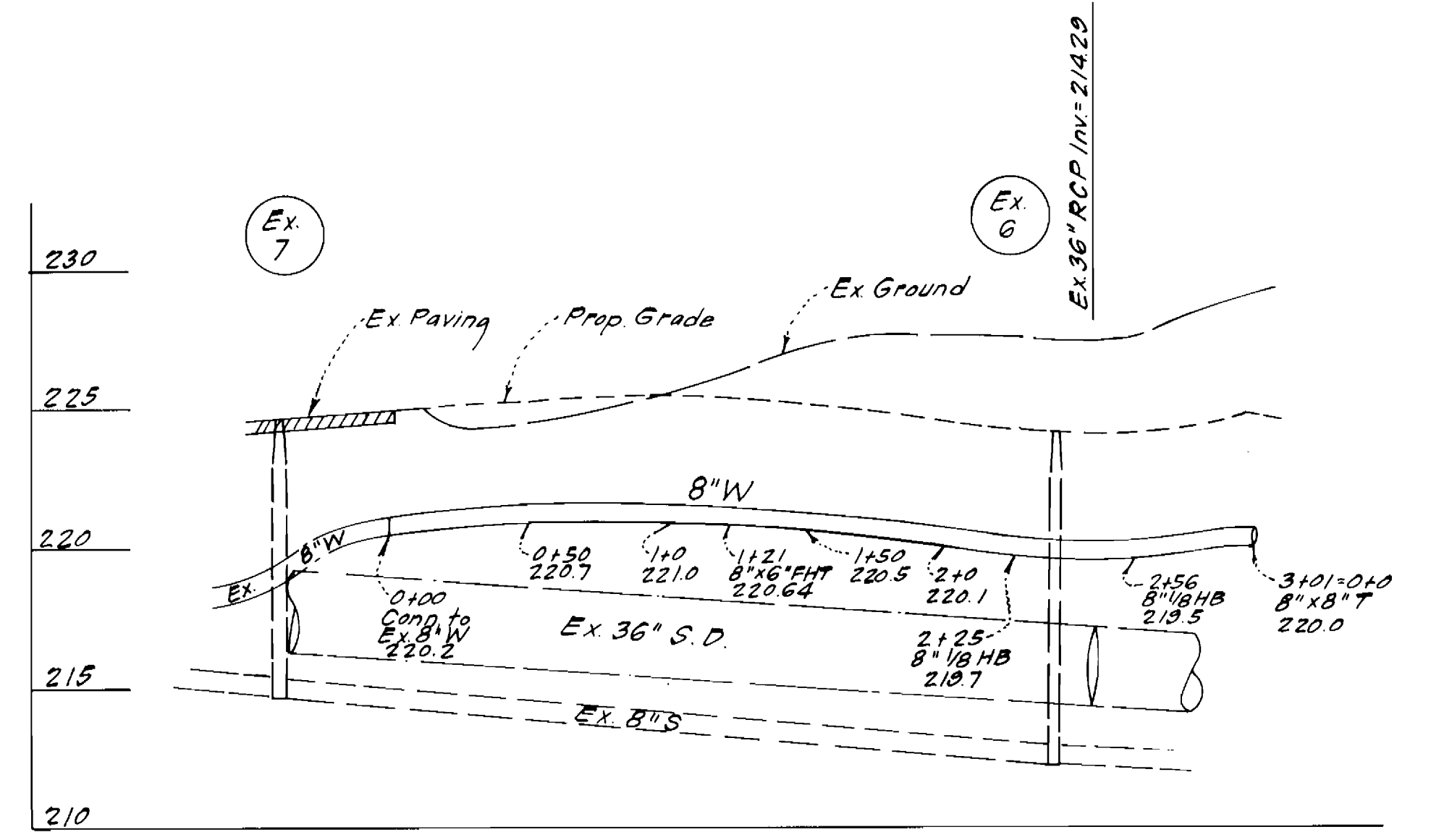
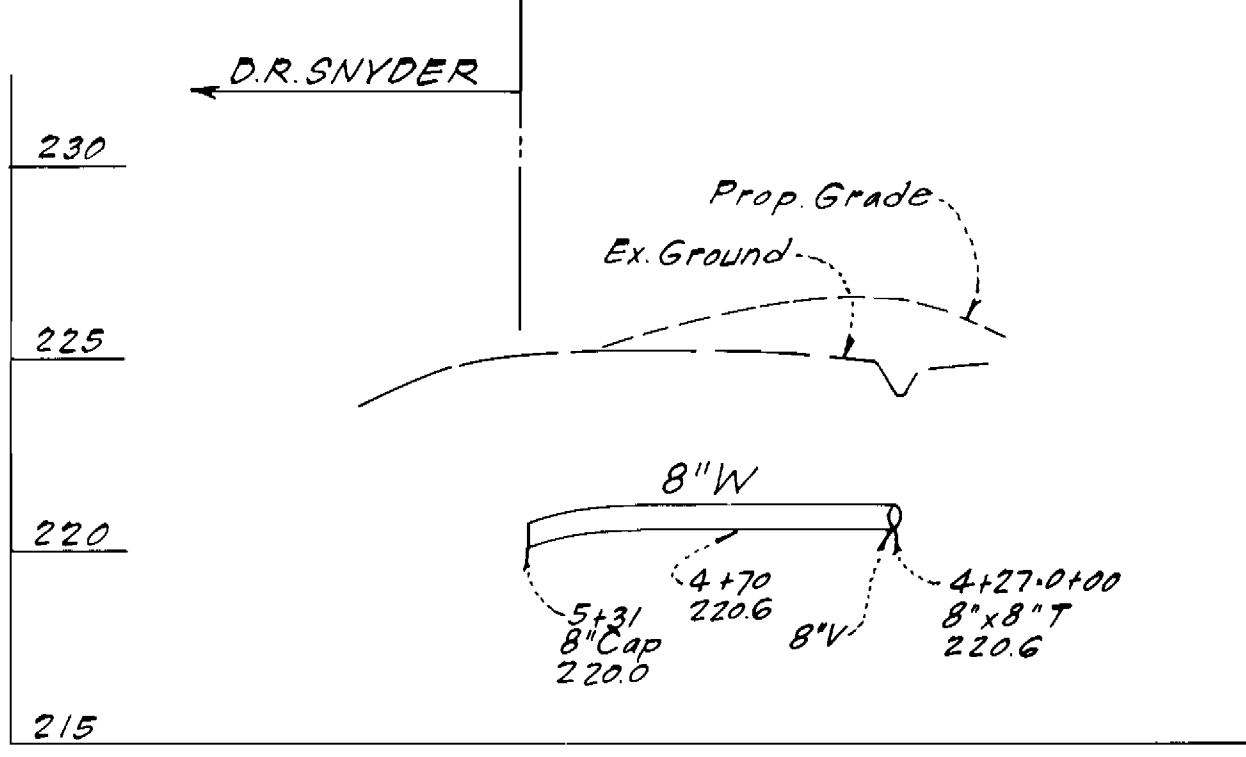
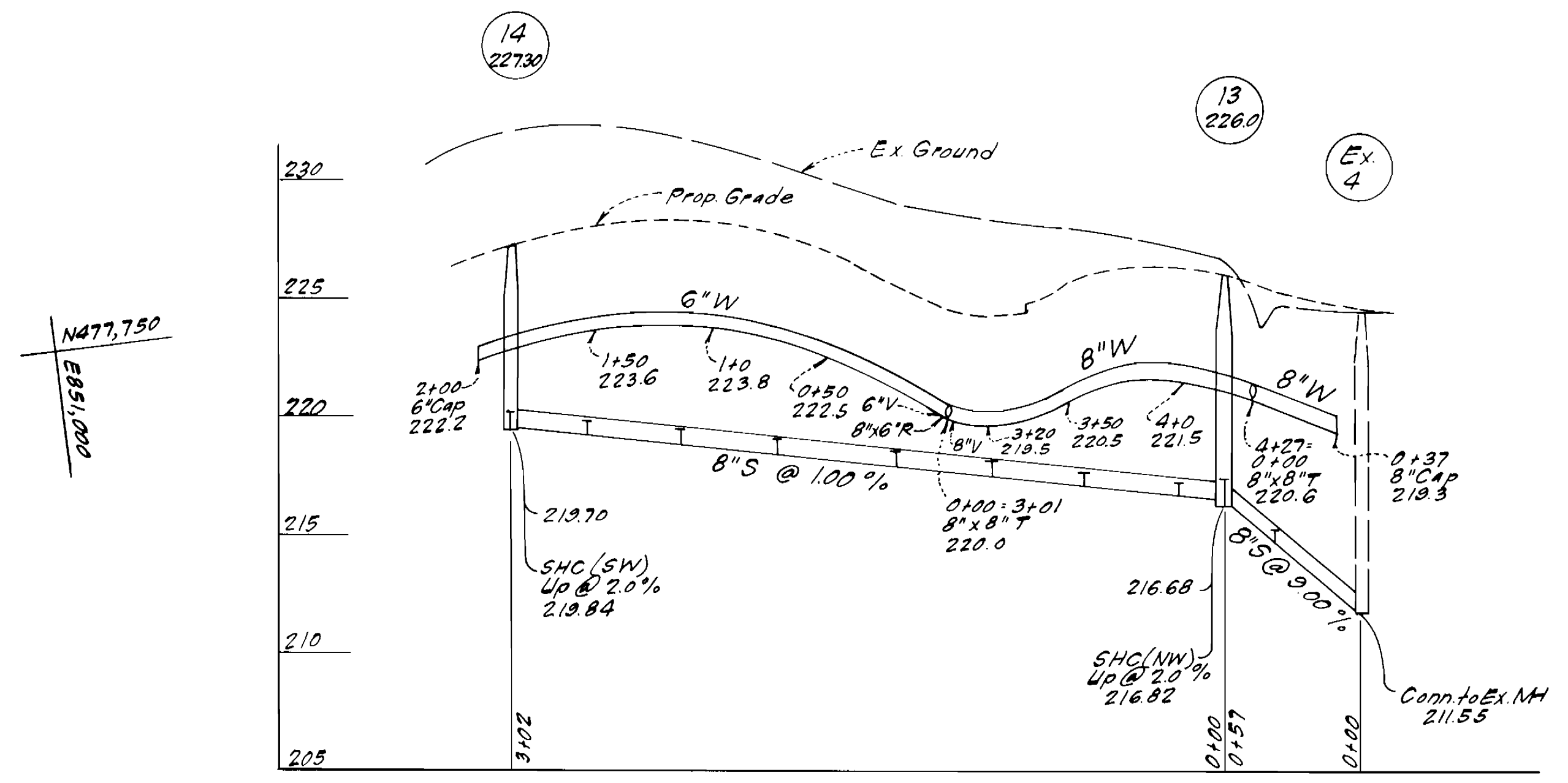
WELLINGTON PLACE

PROFILE SCALE

Horizontal: 1" = 50'
Vertical: 1" = 5'

WELLINGTON PLACE

LINE "A"



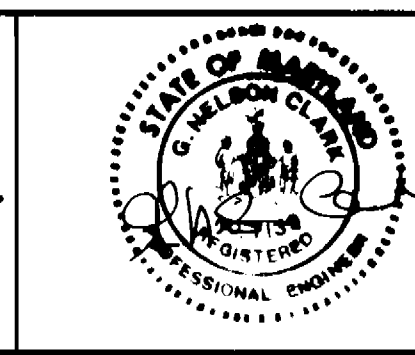
DEPARTMENT OF PUBLIC WORKS
HOWARD COUNTY, MARYLAND

James M. ...
DIRECTOR OF PUBLIC WORKS
DATE: 10-5-83

...
CHIEF, BUREAU OF UTILITIES

CLARK FINEPROCK & SACKETT
ENGINEERS PLANNERS SURVEYORS

11315 LOCKWOOD DRIVE SILVER SPRING, MARYLAND 20904
(301) 593-3400



DES: C.K.G.	V.L.B.	1	Revised Lot Numbers to agree with Record Plat	10/21/83
DRN: V.L.B.				
CHK: C.K.G.				
DATE: 8/83	BY: NO.	REVISION	DATE	600'S SCALE MAP NO. 47 BLOCK NO.

PLAN AND PROFILES OF
WATER & SEWER MAINS

ASBURY WOODS
SECTION ONE AREA TWO
6TH ELECTION DISTRICT
CONTRACT NO. 24-1148 D

SCALE
AS SHOWN
SHEET
2 OF 2