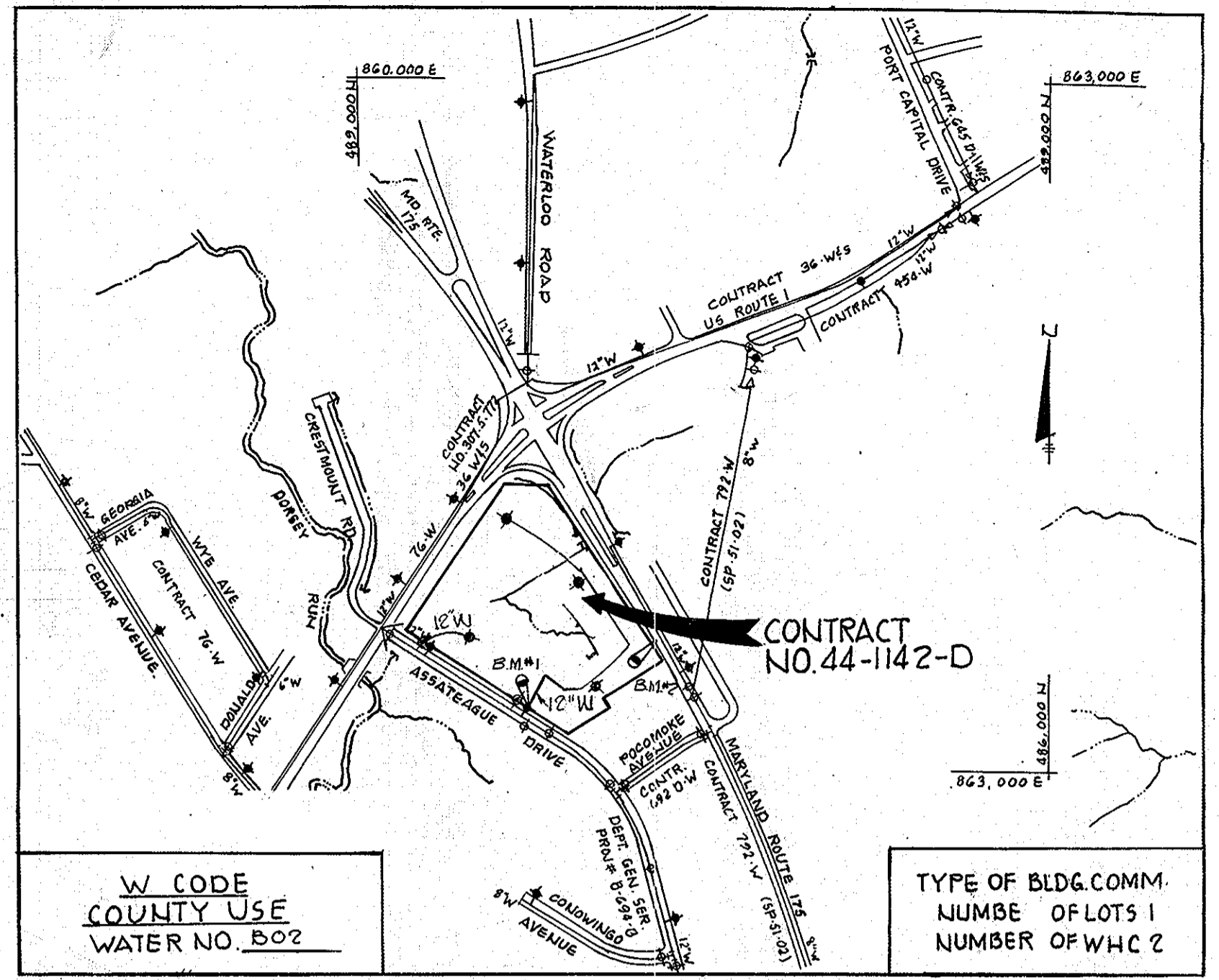


SEDIMENT CONTROL MEASURES FOR THIS CONTRACT WILL BE IMPLEMENTED IN ACCORDANCE WITH ARTICLE 15 OF THE SPECIFICATIONS.

James M. Helmet 8/30/83
 HOWARD SOIL CONSERVATION DISTRICT
 REVIEWED FOR HOWARD SOIL CONSERVATION DISTRICT AND MEETS TECHNICAL REQUIREMENTS.

US SOIL CONSERVATION SERVICE DATE
 THIS PLAN IS APPROVED FOR SOIL EROSION AND SEDIMENT CONTROL BY THE HOWARD SOIL CONSERVATION DISTRICT.
Wm. J. Howe 8-29-83
 HOWARD SOIL CONSERVATION DISTRICT DATE



VICINITY MAP
 SCALE 1"=600'
GENERAL NOTES

- Approximate location of existing mains are shown. The contractor shall take all necessary precautions to protect existing mains and services and maintain uninterrupted supply. Any damage incurred shall be repaired immediately to the satisfaction of the Engineer, at the Contractor's expense.
- All horizontal controls are based on Maryland State Coordinates.
- All vertical controls are based on U.S.G.S. Datum.
- All pipe elevations are invert elevations.
- Clear all utilities by a minimum of 6'. Clear all poles by 2'-0" minimum or tunnel as required. Any cost incurred to the contractor for tunneling or bracing at poles shall be included in unit prices bid for excavation and backfill.
- For details not shown on the drawings, use Howard County Standard Details.
- For materials and construction methods use Howard County Standard Specifications.
- Contractor shall locate existing utilities a minimum of two (2) weeks in advance of construction operations in the vicinity of proposed utilities at his own expense.
- Contractor shall notify the following utilities or agencies at least five (5) working days before starting work shown on these plans.

a. State Highway Administration	531-5533
b. Baltimore Gas and Electric Company	685-0123
c. Baltimore Gas and Electric Company	685-0123
d. Engineering - "Damage Control"	234-5621
e. "Miss Utility"	1-559-0100
f. Chesapeake and Potomac Telephone Company	725-9976
g. American Telephone and Telegraph	393-3553
h. Contonial Pipeline Company	781-4641
i. Bureau of Utilities	992-2366
- Trees are to be protected from damage to maximum extent. Trees located within the construction strip are not to be removed or damaged by any contractor.
- Contractor shall remove trees, stumps and roots along line of excavation as directed by the Engineer. Payment for such removal shall be included in the unit price bid for excavation and backfill.
- Place regulation "Men Working" and warning signs as required to comply with Maryland State Highway Administration Manual of Traffic Control for Highway Construction and Maintenance Operations.
- All water mains to be C.I.P. or D.I.P. unless otherwise noted.
- Top of all water mains to have a minimum of 3 1/2" cover unless otherwise noted.
- Valves adjacent to trees shall be strapped to trees.
- Block all fittings with concrete.
- Bury line elevations on fire hydrants shall be set to the elevations shown on the drawings. All fire hydrants shall be strapped and buttressed with concrete in accordance with standard details. Soil around the fire hydrant to be compacted in accordance with Section 3701 & 3705 of the Standard Specifications.
- All water house connections shall be for an inside meter setting.
- The contractor shall not operate any water main valves on the existing system.
- Profile stations shall be adjusted as necessary to conform to plan dimensions.
- No pipe shall be laid until lines of excavation have been brought to subgrade.

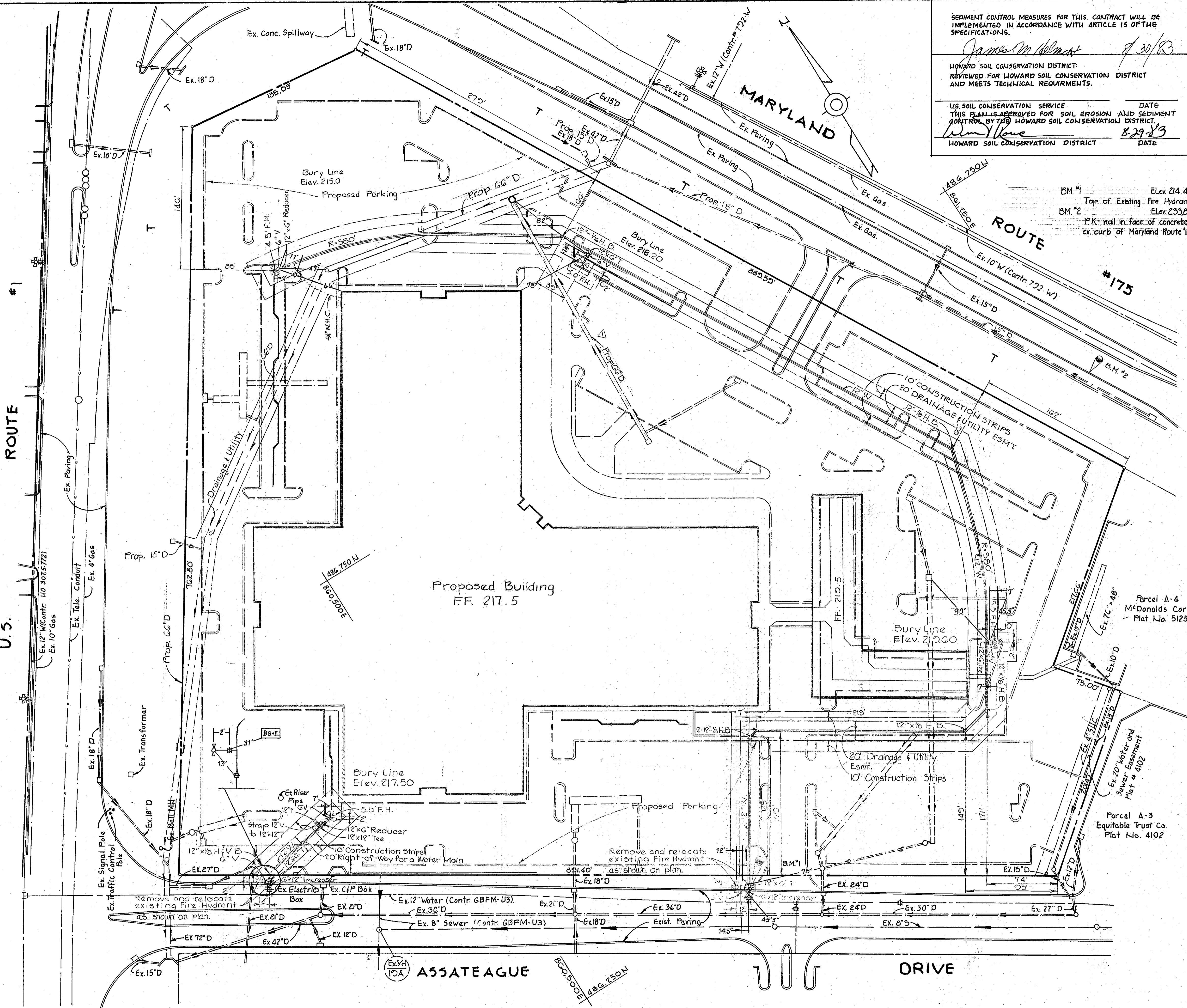
ITEM	QUANTITIES	ESTIMATED	AS BUILT	MATERIAL/SUPPLIER
6" Water	87	64		Griffin Pipe/D.I.P.
12" Water	1515	1524		Griffin Pipe/D.I.P.
Fire Hydrants	5	34		U.S. Pipe/Belair Rd.

Maryland Wholesale Center
 Block "B", Parcel "B"
 Contract No. 44-1142-D

DATE
 8-25-83

 PROFESSIONAL ENGR. 8707

No.	Revision	Date
2	Revised Fire Hydrant Dimension	12-15-83
1	Revised Size of GG'D	9-28-83



THE RIEMER GROUP, INC.
 8659 BALTIMORE NATIONAL PIKE
 ELLICOTT CITY, MARYLAND 21043

DEPARTMENT OF PUBLIC WORKS
 HOWARD COUNTY, MARYLAND

John F. Neuman 9/1/83
 DIRECTOR OF PUBLIC WORKS - DATE

Robert M. Reinger 8-6-83
 CHIEF - BUREAU OF UTILITIES - DATE

William E. Mueggler 9-27-83
 CHIEF LAND DEVELOPMENT DIVISION

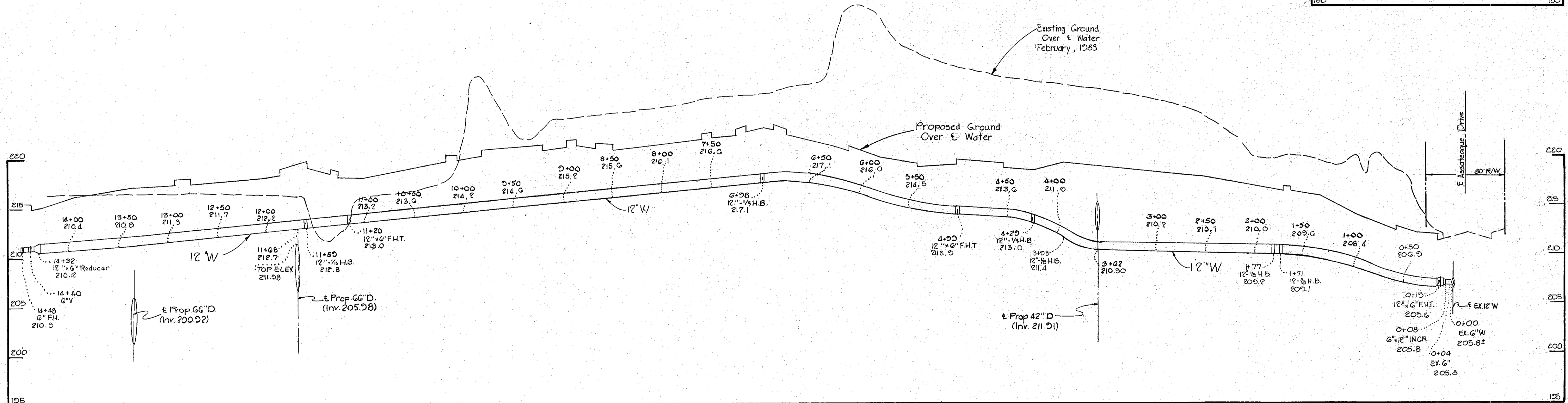
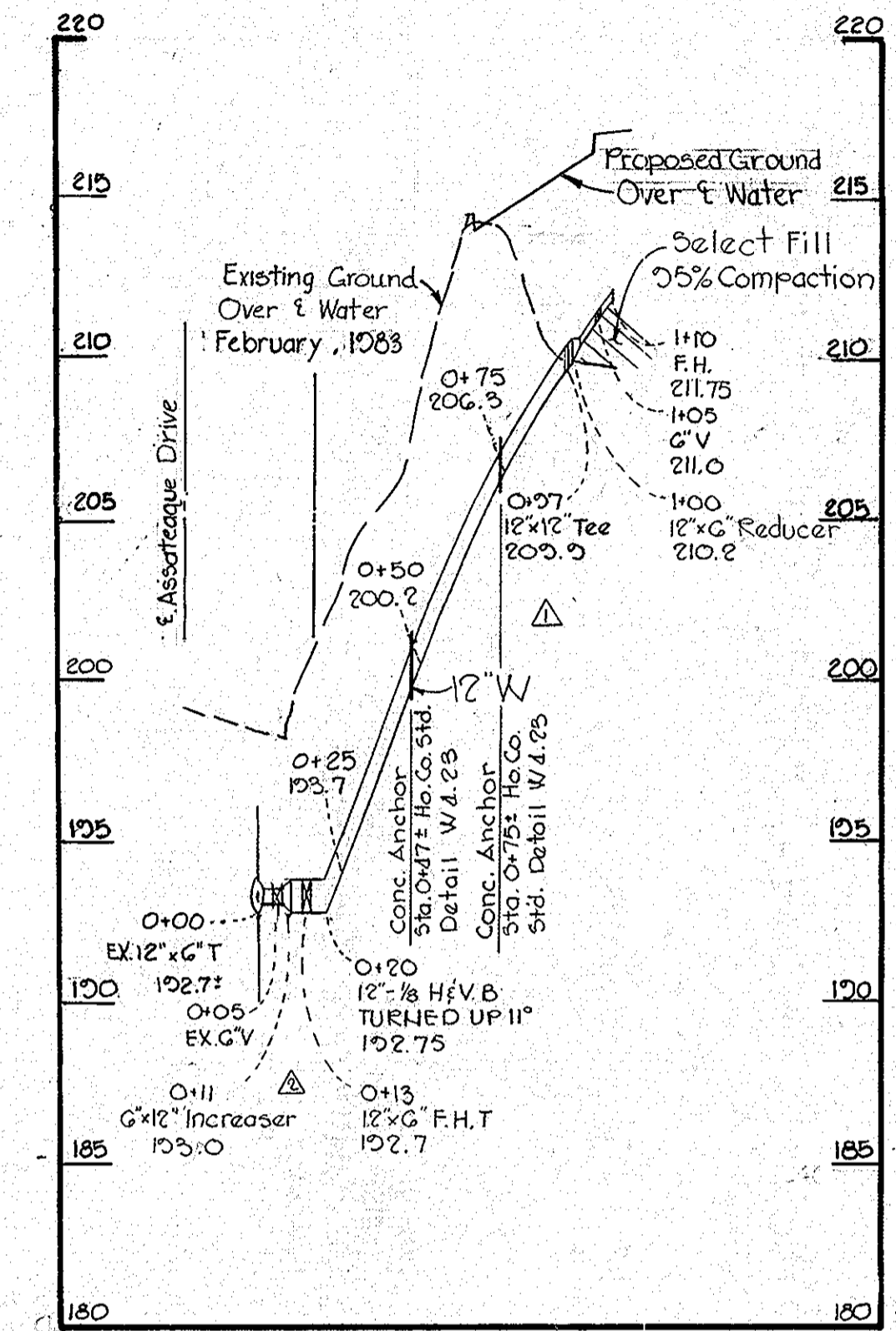
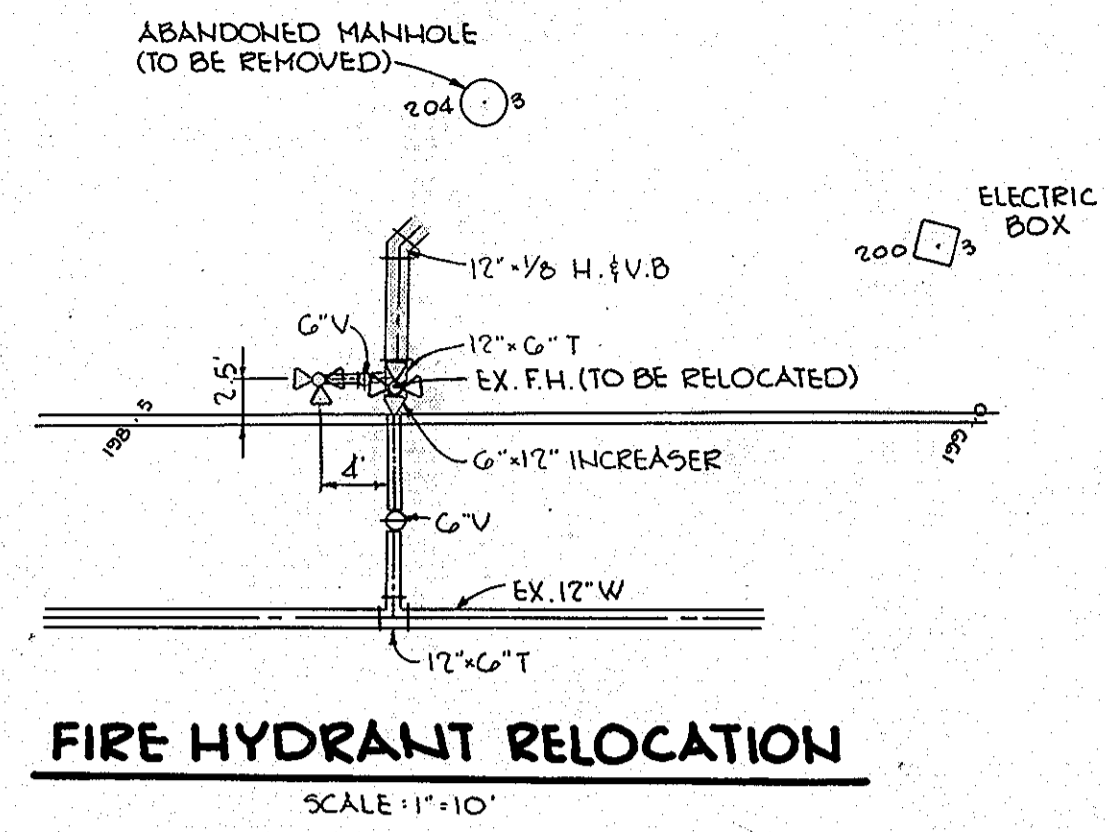
CONTRACT NO. 44-1142-D

PLAN OF
 WATER MAIN EXTENSIONS

MARYLAND WHOLESALE CENTER
 BLOCK "B", PARCEL "B"
 ELECTION DISTRICT NO. 6 HOWARD COUNTY, MARYLAND

DRAWING
 NO. 1
 OF 2

SCALE
 1"=50'



Maryland Wholesale Center
Block "B", Parcel "B"
Contract No. 44-1142-D

8-25-83
DATE
STATE OF MARYLAND
PROFESSIONAL ENGINEER
No. 8707
A. E. MORGAN
PROFESSIONAL ENGR. 8707

△	Revised Profile Stations and Details	12-15-83
△	Added Conc Anchors to Profile	7-28-83
No.	Revision	Date

THE RIEMER GROUP, INC.
8659 BALTIMORE NATIONAL PIKE
ELLCOTT CITY, MARYLAND 21043

DEPARTMENT OF PUBLIC WORKS
HOWARD COUNTY, MARYLAND

John F. Nemy 9-8-83
DIRECTOR OF PUBLIC WORKS - DATE

William S. Row 9/8/83
CHIEF - BUREAU OF ENGINEERING - DATE

Robert S. ... 9/6-83
CHIEF - BUREAU OF UTILITIES - DATE

Walter ... 9-7-83
CHIEF - LAND DEVELOPMENT DIVISION

CONTRACT NO. 44-1142-D

PROFILES OF
WATER MAIN EXTENSIONS

MARYLAND WHOLESALE CENTER
BLOCK "B", PARCEL "B"
ELECTION DISTRICT NO. 6 HOWARD COUNTY, MARYLAND

DRAWING
NO. 2
OF 2

SCALE
HOR: 1"=50'
VERT: 1"=5'