

BENCH MARKS

B.M. #1 "P.O. 4" ELEV. 401.50
RAILROAD SPIKE SET IN EX. PAVING
44' SOUTH FROM INTERSECTION OF
FINE ORCHARD LANE & NICHOLAS COURT

B.M. #2 ELEV. 400.00
RIM OF EXISTING SEWER MANHOLE #7
S.E. CORNER OF LOT #14.

B.M. #3 ELEV. 391.01
RIM OF EXISTING SEWER MANHOLE #3
NORTH CORNER OF LOT #3

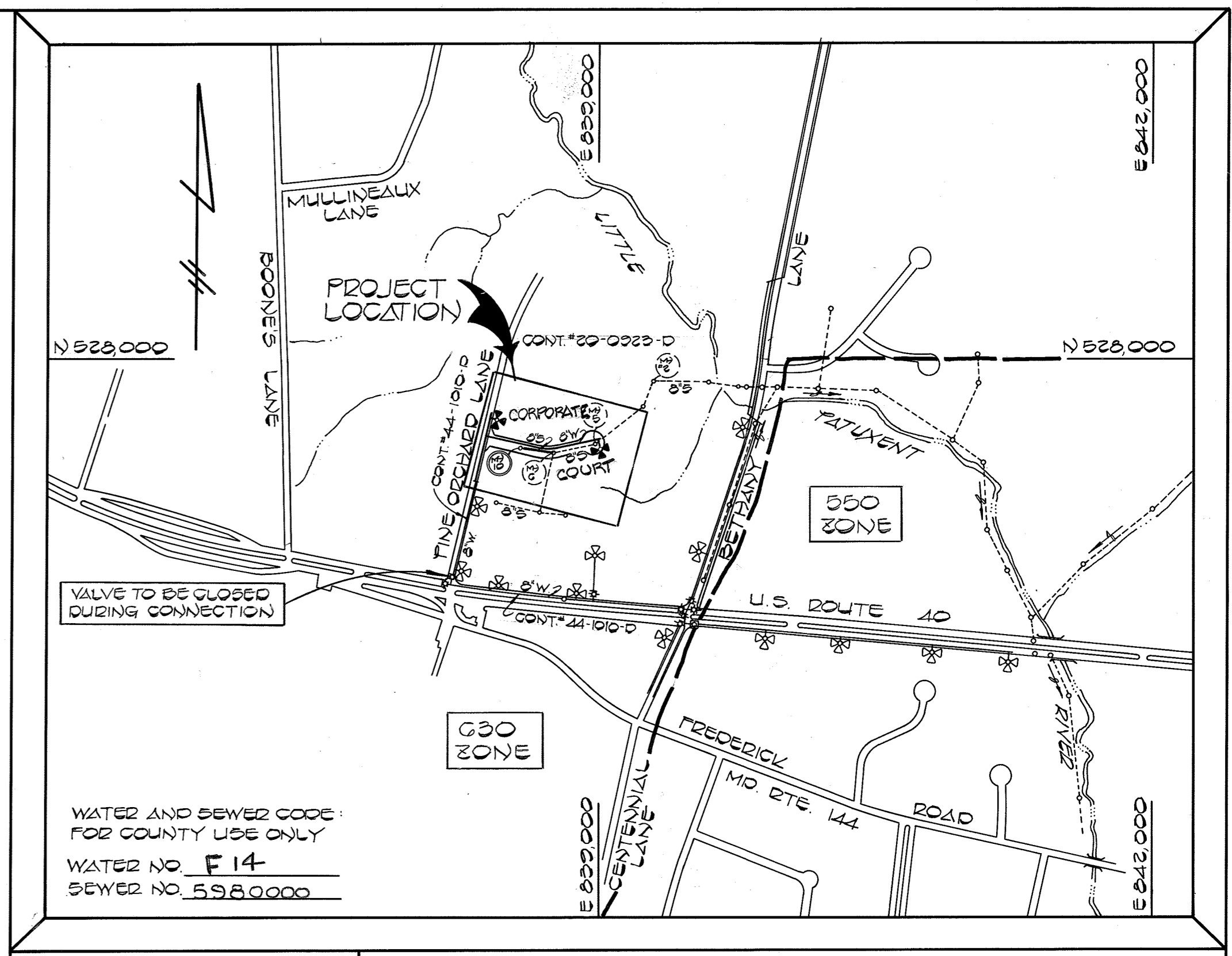
Property of
RUSSELL J. SMITH
300/440
T.M. #17 P. #100

Property of
EDWIN S. ADDISON
281/357
T.M. #24 P. #301

Property of
CHARLES E. MANN
220/401
T.M. #24 P. #13

Property of
SAMUEL B. BECHICKS
317/402
T.M. #24 P. #37

Property of
PINE ORCHARD CHURCH
T.M. #24 P. #600



TYPE OF BUILDING:	BUSINESS
NUMBER OF LOTS:	15
NO. OF WATER HOUSE CONN.:	15
NO. OF SEWER HOUSE CONN.:	15
DRAINAGE AREA:	LITTLE PATUXENT

VICINITY MAP
SCALE: 1"=600'

GENERAL NOTES

- APPROXIMATE LOCATION OF EXISTING MAINS ARE SHOWN. THE CONTRACTOR SHALL TAKE ALL NECESSARY PRECAUTIONS TO PROTECT EXISTING MAINS AND SERVICES AND MAINTAIN UNINTERRUPTED SUPPLY. ANY DAMAGE INCURRED SHALL BE REPAIRED IMMEDIATELY TO THE SATISFACTION OF THE ENGINEER, AT THE CONTRACTOR'S EXPENSE.
- ALL HORIZONTAL CONTROLS ARE BASED ON MARYLAND STATE COORDINATES.
- ALL VERTICAL CONTROLS ARE BASED ON U.S.C. & G.S.
- ALL PIPE ELEVATIONS SHOWN ARE INVERT ELEVATIONS.
- CLEAR ALL UTILITIES BY A MINIMUM OF 6". CLEAR ALL POLES BY 2'-0" MINIMUM OR TUNNEL AS REQUIRED. ANY COST INCURRED TO THE CONTRACTOR FOR TUNNELING OR BRACING AT POLES SHALL BE INCLUDED IN THE UNIT PRICES BID FOR CONSTRUCTION OF THE MAIN.
- FOR DETAILS NOT SHOWN ON THE DRAWINGS USE HOWARD COUNTY STANDARD DETAILS.
- FOR MATERIALS AND CONSTRUCTION METHODS USE HOWARD COUNTY STANDARD SPECIFICATION.
- CONTRACTOR SHALL LOCATE EXISTING UTILITIES A MINIMUM OF TWO (2) WEEKS IN ADVANCE OF CONSTRUCTION OPERATIONS IN THE VICINITY OF PROPOSED UTILITIES AT HIS OWN EXPENSE.
- CONTRACTOR SHALL NOTIFY THE FOLLOWING UTILITIES OR AGENCIES AT LEAST FIVE (5) WORKING DAYS BEFORE STARTING WORK SHOWN ON THESE PLANS:
 - BALTIMORE GAS AND ELECTRIC CO. - UNDERGROUND ELECTRIC DISTRIBUTION CUSTOMER SERVICE - (685-0123)
 - BALTIMORE GAS AND ELECTRIC CO. - UNDERGROUND GAS DISTRIBUTION CUSTOMER SERVICE - (685-0123)
 - ENGINEERING - "DAMAGE CONTROL" - (234-5621)
 - "MISS UTILITY" - (1-559-0100)
 - CHESAPEAKE AND POTOMAC (C & P) TELEPHONE COMPANY - (725-9976)
 - BUREAU OF UTILITIES, HOWARD COUNTY - (992-2366)
- TREES ARE TO BE PROTECTED FROM DAMAGE TO MAXIMUM EXTENT. TREE LOCATED WITHIN THE CONSTRUCTION STRIP ARE NOT TO BE REMOVED OR DAMAGED BY THE CONTRACTOR.
- CONTRACTOR SHALL REMOVE TREES, STUMPS AND ROOTS ALONG LINE OF EXCAVATION AS DIRECTED BY THE ENGINEER. PAYMENT FOR SUCH REMOVAL SHALL BE INCLUDED IN THE UNIT PRICE BID FOR THE CONSTRUCTION OF THE MAIN.
- PLACE REGULATION "MEN WORKING" AND WARNING SIGNS AS REQUIRED TO COMPLY WITH MARYLAND STATE HIGHWAY ADMINISTRATION MANUAL OF TRAFFIC CONTROL FOR HIGHWAY CONSTRUCTION AND MAINTENANCE OPERATION.
- ALL WATER MAINS TO BE C.I.P. OR D.I.P. UNLESS OTHERWISE NOTED.
- TOP OF ALL WATER MAINS HAVE A MINIMUM OF 3'-6" COVER UNLESS OTHERWISE NOTED.
- VALVES ADJACENT TO TEES SHALL BE STRAPPED TO TEES.
- BLOCK ALL FITTINGS WITH CONCRETE.
- BURY LINE ELEVATIONS ON FIRE HYDRANTS SHALL BE SET TO THE ELEVATIONS SHOWN ON THE DRAWINGS. ALL FIRE HYDRANTS SHALL BE STRAPPED AND BUTTRESSED WITH CONCRETE IN ACCORDANCE WITH STANDARD DETAILS. SOIL AROUND THE FIRE HYDRANTS TO BE COMPACTED IN ACCORDANCE WITH SECTION 37.01 AND 37.05 OF THE STANDARD SPECIFICATIONS.
- ALL WATER HOUSE CONNECTIONS SHALL BE FOR AN INSIDE METER SETTINGS.
- THE CONTRACTOR SHALL NOT OPERATE ANY WATER MAIN VALVES ON THE EXISTING SYSTEM.
- ALL SEWER MAINS SHALL BE C.S.P.X., V.C.P.X., A.C.P. CLASS 2400 OR P.V.C. UNLESS OTHERWISE NOTED.
- THE CONTRACTOR SHALL PROVIDE A JOINT IN ALL SEWER MAINS WITHIN 2'-0" OF EXTERIOR MANHOLE WALL.
- ALL MANHOLE SHALL BE 4'-0" INSIDE DIAMETER, UNLESS OTHERWISE NOTED.
- MANHOLES SHOWN WITH 12" AND 16" WALLS ARE BRICK MANHOLES ONLY.
- WATER MAIN AND WATER HOUSE CONNECTION LINE MUST BE PLACED SO AS TO HAVE AT LEAST ONE (1) FOOT SEPARATION FROM THE SEWER MAIN OR SEWER HOUSE CONNECTION AS THEY PASS ABOUT IT.
- FOR ALL COPPER WATER HOUSE CONNECTIONS, UTILIZE FLARED TYPE FITTINGS ONLY.

QUANTITIES

ITEM	EST'D	AS-BUILT	SUPPLIER
3" WATER	904 L.F.	202.5 LF	A# P.W. & S. Supply
6" WATER	80 L.F.	76.5 LF	" " "
3" VALVES	3 EA.	3 EA.	Belair Pd. Supply
6" VALVES	3 EA.	3 EA.	" " "
FIRE HYD.	3 EA.	3 EA.	" " "
2" W/H	500 L.F.	505 LF	" " "
6" SEWER	224 L.F.	220 LF	A# P. Water & Sewer
8" SEWER	410 L.F.	386 LF	" " "
6" SEWER SADDLE	11 EA.	11 EA.	Belair Pd. Supply
MANHOLES	1 EA.	1 EA.	Athletic Procast

LIMIT OF WORK THIS CONTRACT

NOTE: REMOVE EXISTING CONCRETE BUTTRESSES AND PLUG AND CONNECT PROP. S.W.

LIMIT OF WORK THIS CONTRACT

SEDIMENT CONTROL MEASURES FOR THIS CONTRACT WILL BE IMPLEMENTED IN ACCORDANCE WITH THE PROVISIONS OF THESE SPECIFICATIONS AND ALSO AS SHOWN ON THE GRADING AND SEDIMENT CONTROL PLAN F-83-U18

REVIEWED FOR HOWARD COUNTY SOIL CONSERVATION DISTRICT AND MEETS TECHNICAL REQUIREMENTS
 James M. Nelson 10-3-83
 U.S. SOIL CONSERVATION SERVICE DATE

THIS DEVELOPMENT IS APPROVED FOR EROSION AND SEDIMENT CONTROL BY THE HOWARD COUNTY SOIL CONSERVATION DISTRICT
 Approved: _____ 10-3-83
 HOWARD COUNTY SOIL CONSERVATION DISTRICT DATE

DEPARTMENT OF PUBLIC WORKS
 HOWARD COUNTY, MARYLAND

Robert W. Wood, Jr. 10/11/83
 CHIEF, BUREAU OF UTILITIES DATE

James M. Nelson 10-3-83
 CHIEF, LAND DEVELOPMENT DIVISION DATE

FISHER, COLLINS, AND CARTER, INC.
 CONSULTING ENGINEERS AND LAND SURVEYORS
 8388 COURT AVENUE
 ELLICOTT CITY, MARYLAND 21043
 461-2855

TERRELL A. FISHER DATE

DES. D.B.S.	
DRN. D.B.S.	
CHK. T.A.F.	
DATE: 5-5-83	

PLAN
 1"=50'

WATER AND SEWER MAINS

PINE ORCHARD PARK (PARCELS F-U)
 SECTION 2
 CONTRACT NO. 24-1135-D
 SECOND ELECTION DISTRICT
 HOWARD COUNTY, MARYLAND

SCALE: AS SHOWN
 SHEET 1 OF 2

