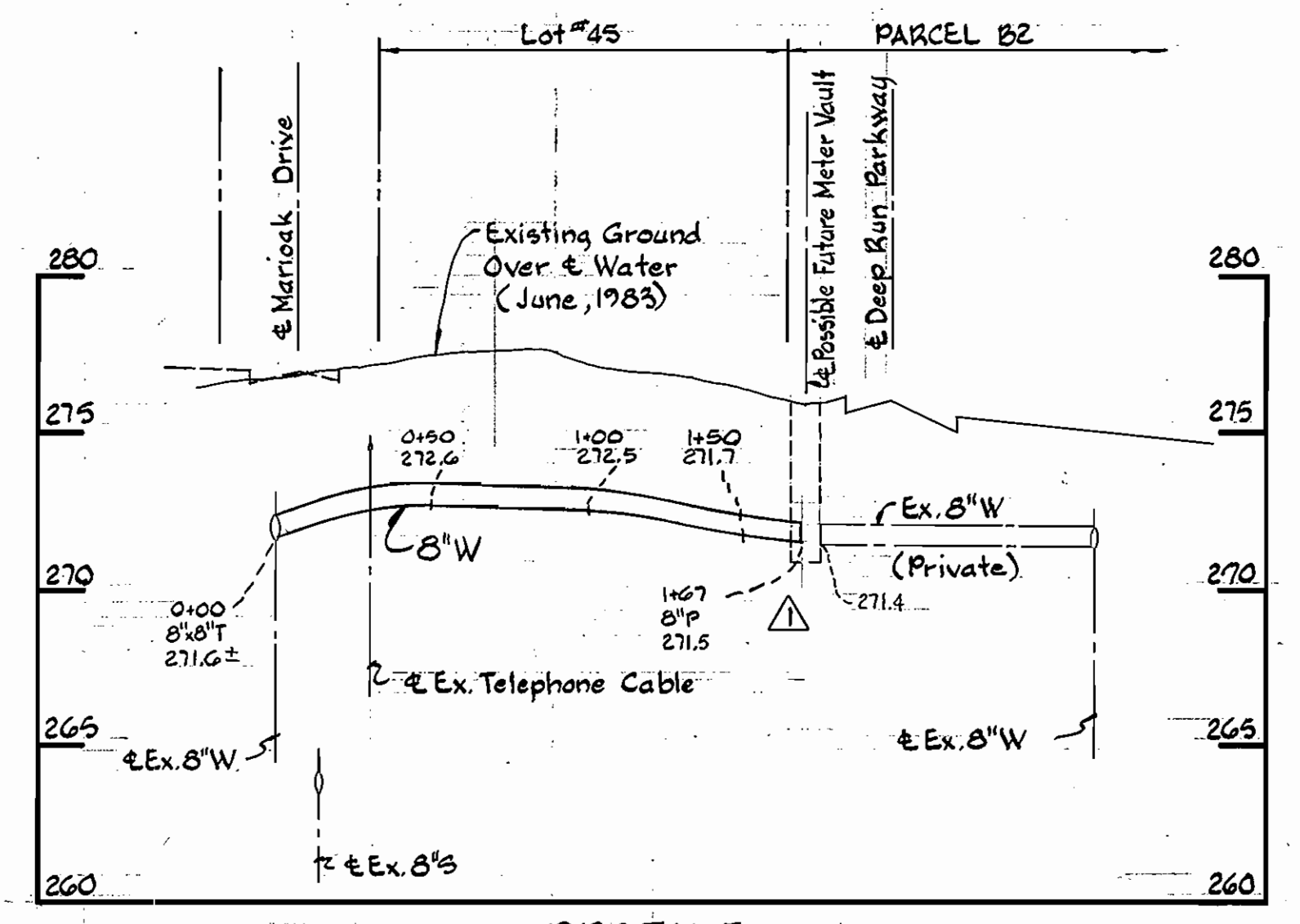


**PLAN**  
Scale: 1"=50'



**PROFILE**  
Scale: H: 1"=50'  
V: 1"=5'

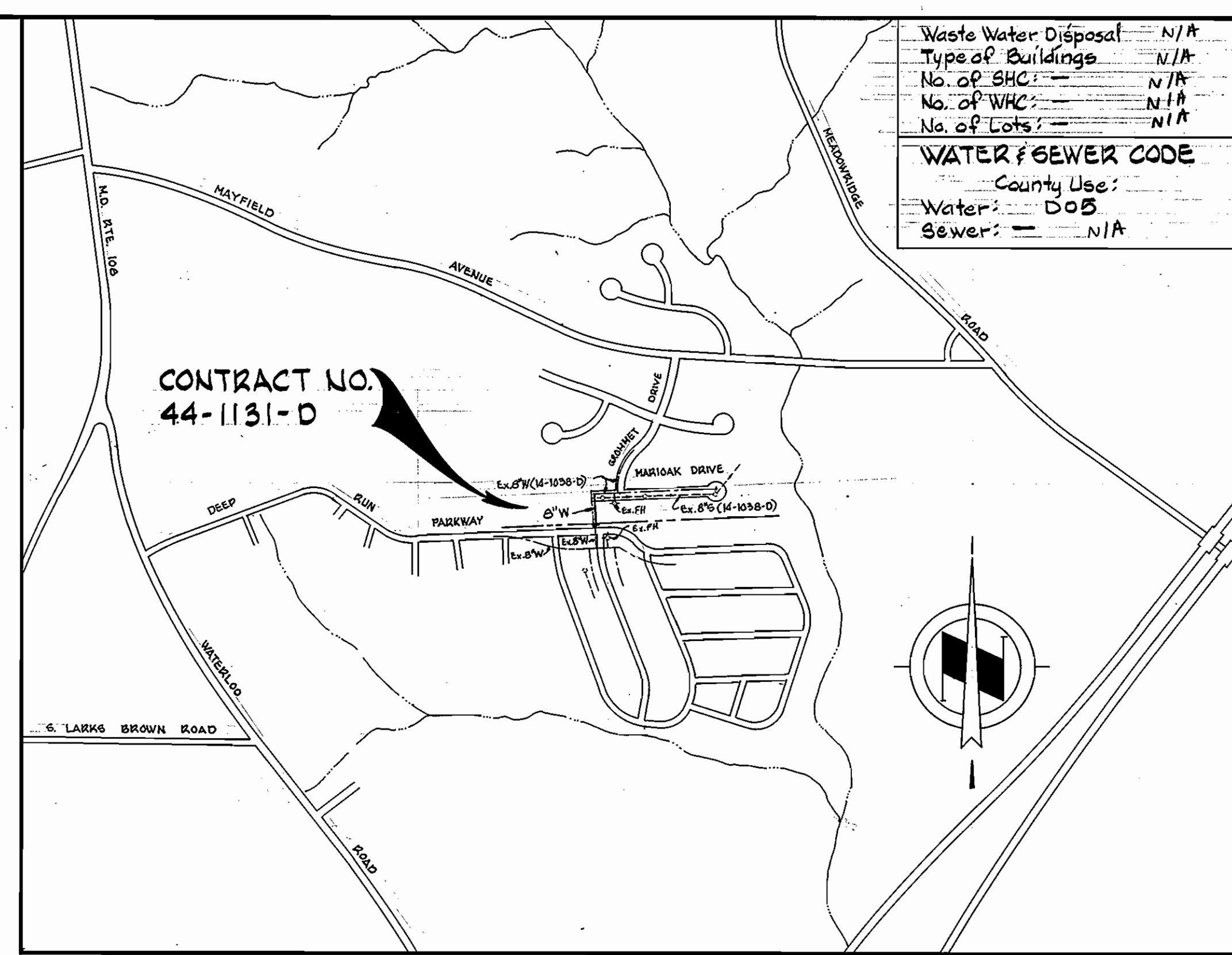
**BENCH MARKS**

B.M. Road "D" - Sta. 26+15.25' left. Spike in 30" Oak. Elev. 278.88

B.M. Road "D" - Sta. 22+40.20' right. Nut on F.H. (on ring, north). Elev. 281.53

**QUANTITIES**

ITEM	BID	AS-BUILT	MATERIAL / SUPPLIER
8" Water - L.F.	170	167'	D.T.P. / Griffin pipe prod.
8" Valve - Each	1	1	



**VICINITY MAP**  
Scale: 1"=600'

Waste Water Disposal: N/A  
Type of Buildings: N/A  
No. of SHC: N/A  
No. of WMC: N/A  
No. of Lots: N/A

**WATER SEWER CODE**  
County Use:  
Water: DOB  
Sewer: N/A

**GENERAL NOTES**

- APPROXIMATE LOCATION OF EXISTING MAINS ARE SHOWN. THE CONTRACTOR SHALL TAKE ALL NECESSARY PRECAUTIONS TO PROTECT EXISTING MAINS AND SERVICES AND MAINTAIN UNINTERRUPTED SUPPLY. ANY DAMAGE INCURRED SHALL BE REPAIRED IMMEDIATELY TO THE SATISFACTION OF THE ENGINEER, AT THE CONTRACTOR'S EXPENSE.
- ALL HORIZONTAL CONTROLS ARE BASED ON MARYLAND STATE COORDINATES.
- ALL VERTICAL CONTROLS ARE BASED ON U.S.G.S. DATUM.
- ALL PIPE ELEVATIONS SHOWN ARE INVERT ELEVATIONS.
- CLEAR ALL UTILITIES BY A MINIMUM OF 6". CLEAR ALL POLES BY 2'-0" MINIMUM OR TUNNEL AS REQUIRED. ANY COST INCURRED TO THE CONTRACTOR FOR TUNNELING OR BRACING AT POLES SHALL BE INCLUDED IN UNIT PRICES BID FOR CONSTRUCTION OF THE MAIN.
- FOR DETAILS NOT SHOWN ON THE DRAWINGS USE HOWARD COUNTY STANDARD DETAILS.
- FOR MATERIALS AND CONSTRUCTION METHODS USE HOWARD COUNTY STANDARD SPECIFICATIONS.
- CONTRACTOR SHALL LOCATE EXISTING UTILITIES A MINIMUM OF TWO (2) WEEKS IN ADVANCE OF CONSTRUCTION OPERATIONS IN THE VICINITY OF PROPOSED UTILITIES AT HIS OWN EXPENSE.
- CONTRACTOR SHALL NOTIFY THE FOLLOWING UTILITIES OR AGENCIES AT LEAST FIVE (5) WORKING DAYS BEFORE STARTING WORK SHOWN ON THESE PLANS:  
STATE HIGHWAY ADMINISTRATION - 531-5533  
BALTIMORE GAS AND ELECTRIC COMPANY - UNDERGROUND ELECTRIC DISTRIBUTION CUSTOMER SERVICE - 685-0123  
ENGINEERING - "DAMAGE CONTROL" - 234-5621  
"MISS UTILITY" - 1-559-0100  
CHESAPEAKE & POTOMAC (C&P) TELEPHONE COMPANY - 725-9976  
AMERICAN TELEPHONE AND TELEGRAPH - CABLE LOCATION DIVISION - 393-3553  
COLONIAL PIPELINE COMPANY - 781-4641  
BUREAU OF UTILITIES HOWARD COUNTY - 992-2366.
- TREES ARE TO BE PROTECTED FROM DAMAGE TO MAXIMUM EXTENT. TREES LOCATED WITHIN THE CONSTRUCTION STRIP ARE NOT TO BE REMOVED OR DAMAGED BY THE CONTRACTOR.
- CONTRACTOR SHALL REMOVE TREES, STUMPS AND ROOTS ALONG LINE OF EXCAVATION AS DIRECTED BY THE ENGINEER. PAYMENT FOR SUCH REMOVAL SHALL BE INCLUDED IN THE UNIT PRICE BID FOR CONSTRUCTION OF THE MAIN.
- PLACE REGULATION "MEN WORKING" AND WARNING SIGNS AS REQUIRED TO COMPLY WITH MARYLAND STATE HIGHWAY ADMINISTRATION MANUAL OF TRAFFIC CONTROL FOR HIGHWAY CONSTRUCTION AND MAINTENANCE OPERATIONS.
- ALL WATER MAINS SHALL BE D.I.P. UNLESS OTHERWISE NOTED.
- TOP OF ALL WATER MAINS SHALL HAVE A MINIMUM OF 3-1/2" COVER UNLESS OTHERWISE NOTED.
- VALVES ADJACENT TO TREES SHALL BE STRAPPED TO TREES.
- BLOCK ALL FITTINGS WITH CONCRETE.
- THE CONTRACTOR SHALL NOT OPERATE ANY WATER MAIN VALVES ON THE EXISTING SYSTEM.

REVIEWED FOR HOWARD SOIL CONSERVATION DISTRICT AND MEETS TECHNICAL REQUIREMENT

*James M. Helmer* 7-1-83  
SIGNATURE DATE  
U.S. SOIL CONSERVATION SERVICE

This Development Plan is approved for Soil Erosion and Sediment Control by the Howard County Conservation District.

APPROVED: *Dan Roman* 7-1-83  
HOWARD S.C.D. DATE

Sediment Control Measures for this Contract will be implemented in accordance with Article 15 of the Standard Specifications and F-82-83.

No.	DATE	REVISION
1	10/10/83	Changed Water Main Alignment

Deep Run Park Section II  
Resubdivision of Parcel B  
Contract No. 44-1131-D

DEPARTMENT OF PUBLIC WORKS  
HOWARD COUNTY, MARYLAND

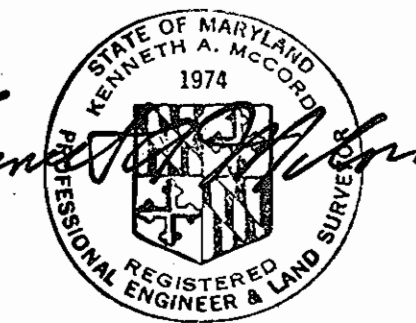
*Steve F. Neuman* 7-8-83  
DIRECTOR OF PUBLIC WORKS - DATE

*Richard B. ...* 7-6-83  
CHIEF - BUREAU OF UTILITIES - DATE

*William ...* 7-7-83  
CHIEF - LAND DEVELOPMENT DIVISION - DATE

WHITMAN, REQUARDT  
AND ASSOCIATES  
ENGINEERS

2315 ST. PAUL ST.  
BALTIMORE, MARYLAND



PLAN & PROFILE OF  
A WATER MAIN

600' SCALE MAP NO. BLOCK NO.

ELKRIDGE  
DEEP RUN PARK  
SECTION II, PARCEL B-2  
ELECTION DISTRICT NO. 1  
CONTRACT NO. 44-1131-D

SCALE AS SHOWN  
SHEET 1 OF 1