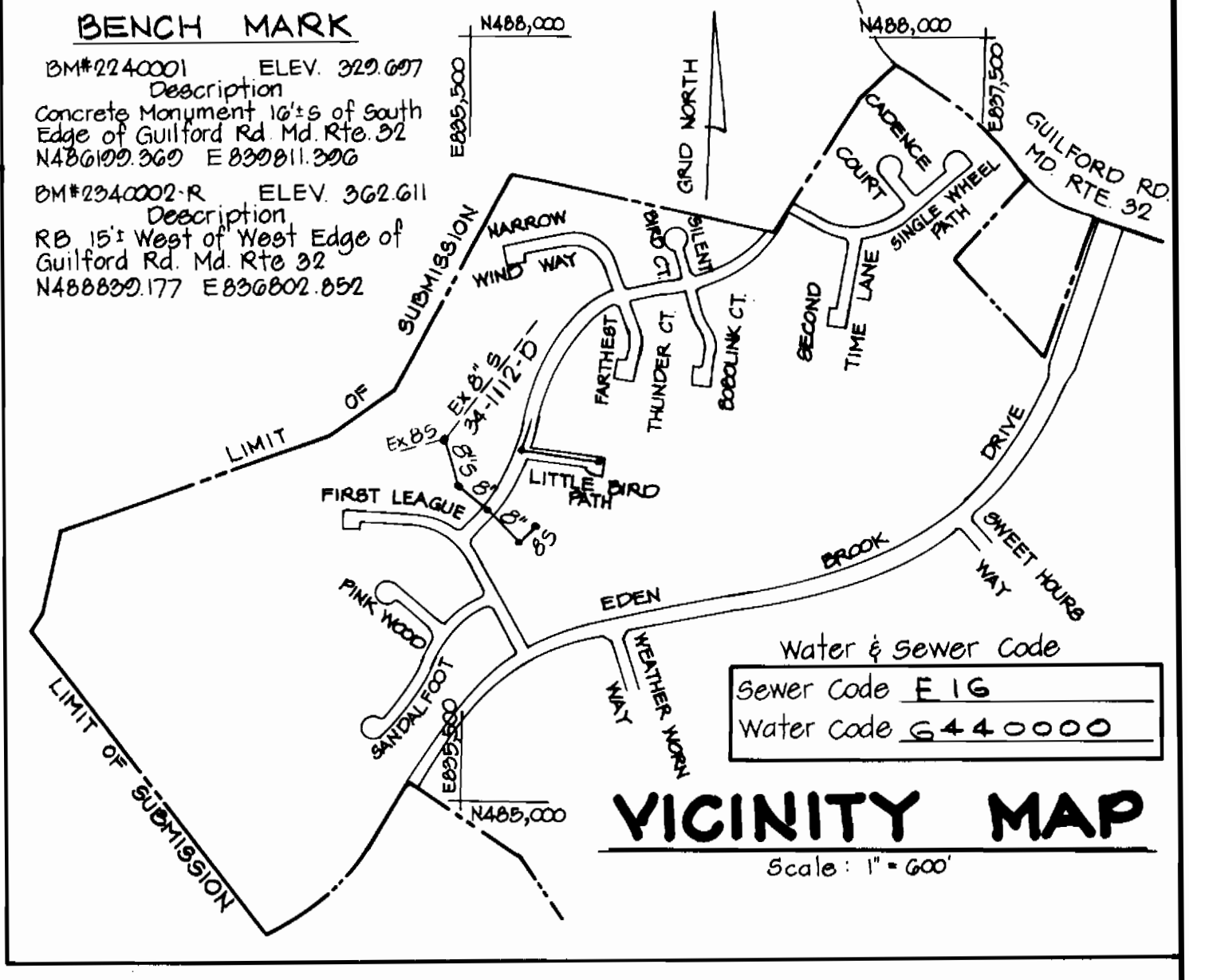


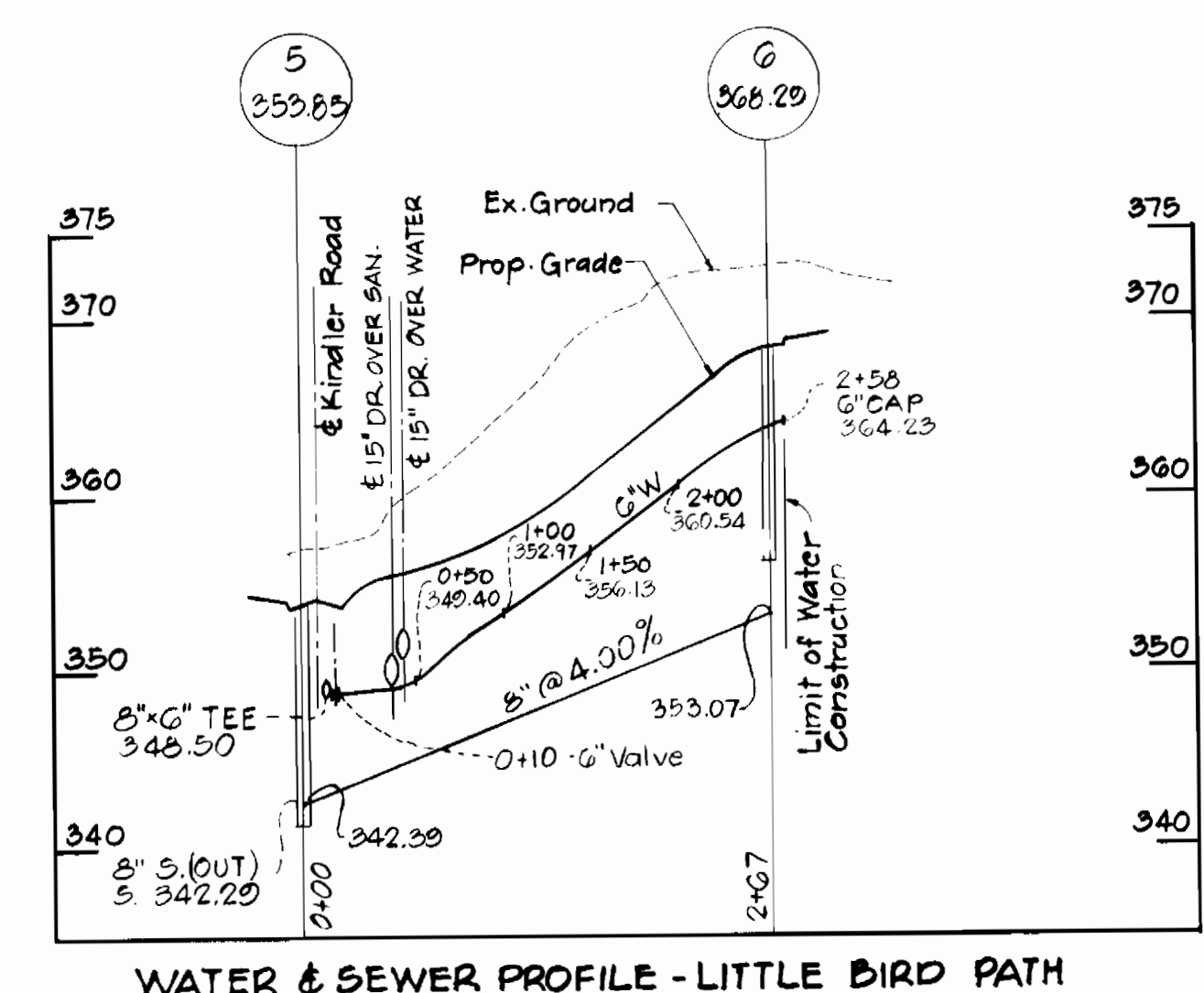
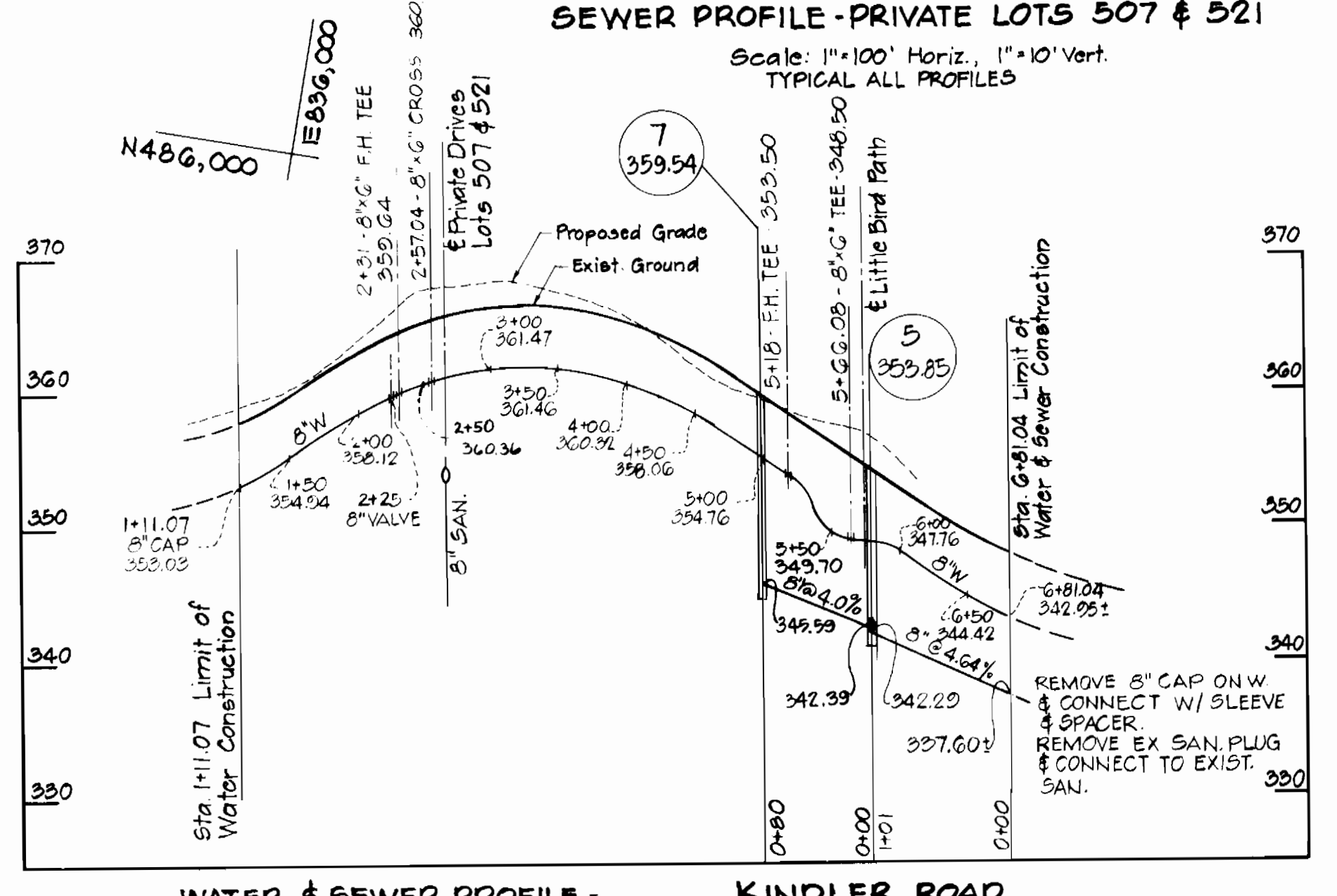
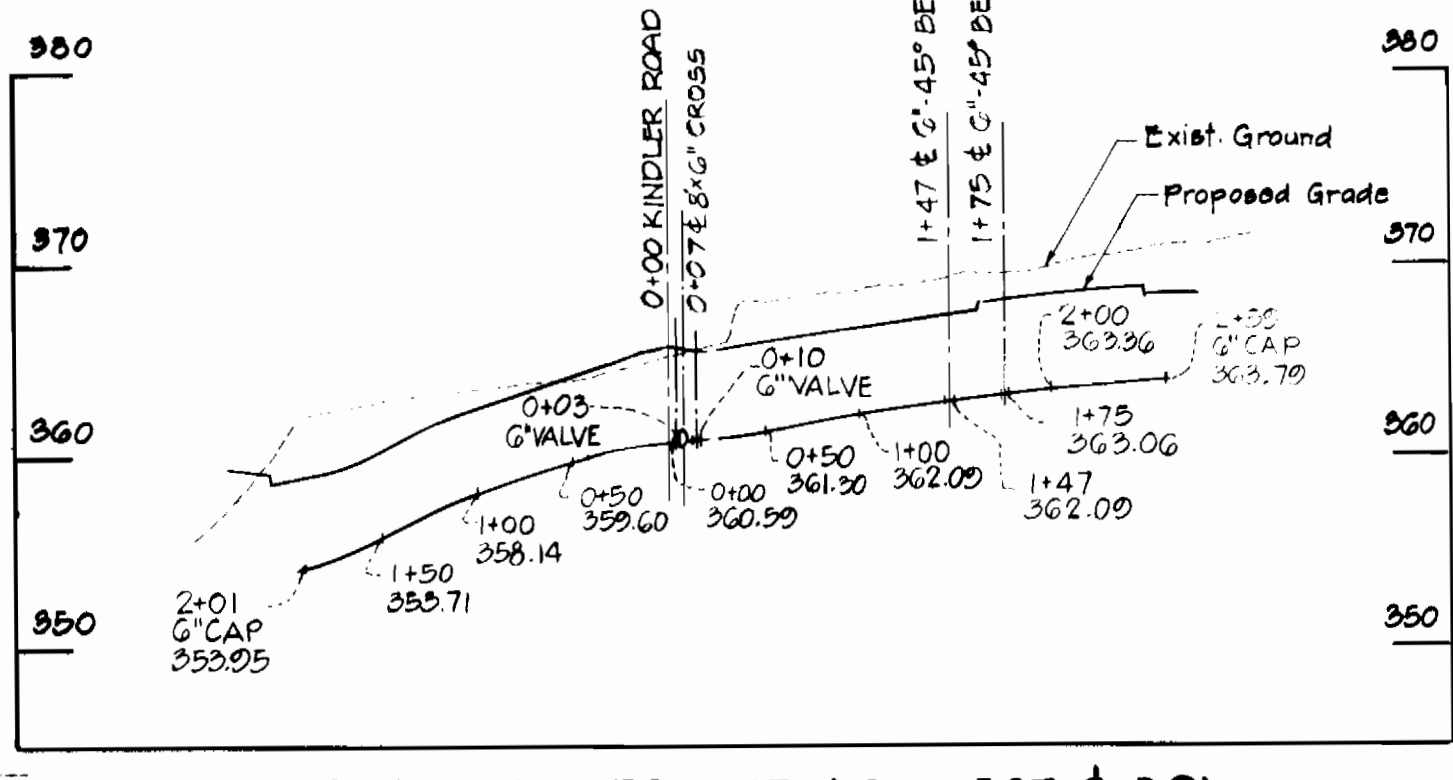
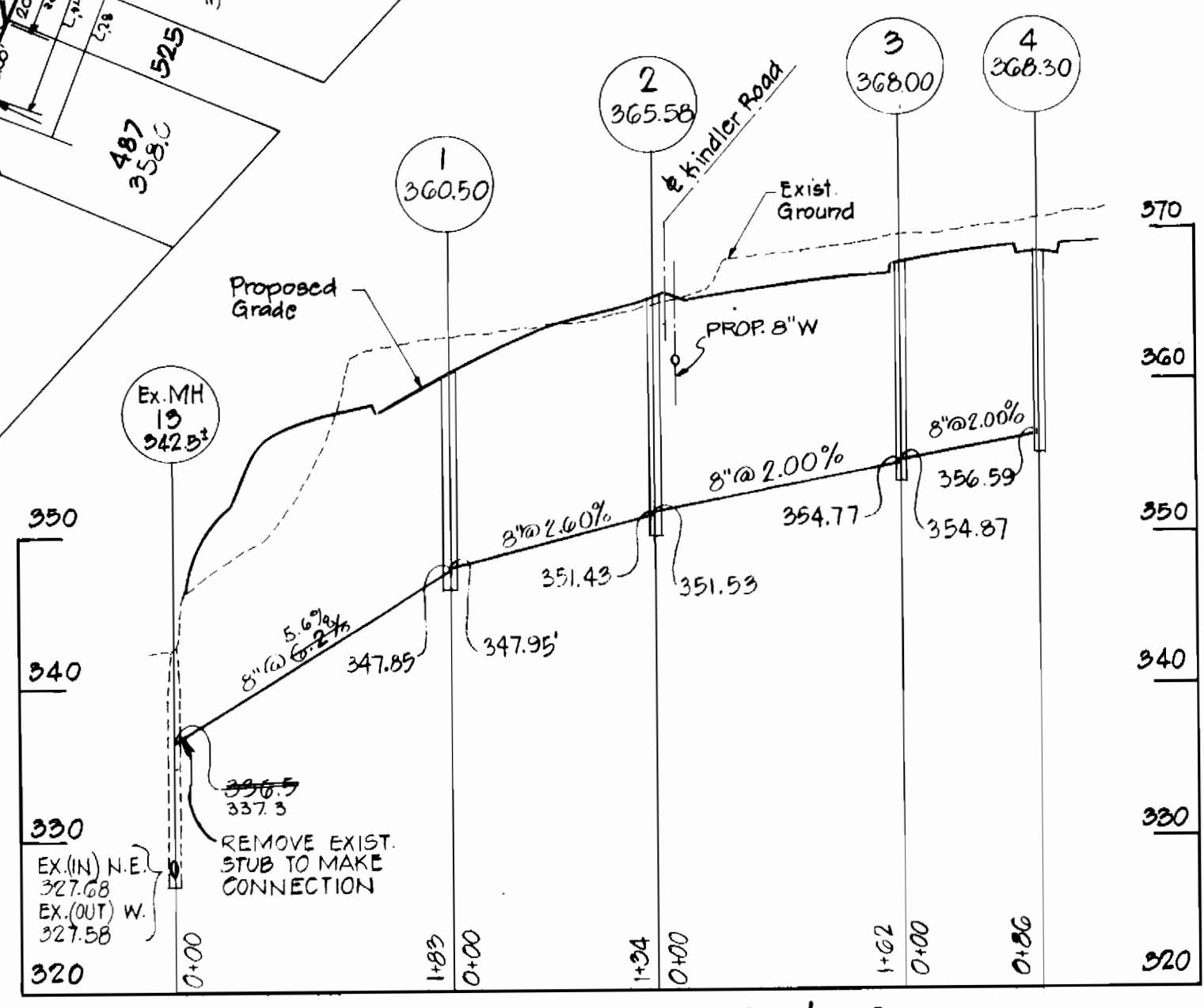
NOTE:
NUMBERS SHOWN BELOW LOT NUMBERS INDICATES LOWEST FLOOR ELEVATIONS THAT SHOULD BE SET FOR EACH HOUSE TO BE SERVED BY THE 8" GRAVITY SEWER UNDER THIS CONTRACT.

QUANTITIES				
ITEM	UNIT	ESTIMATES	AS-BUILT	MATERIAL/SUPPLIER
8" SEWER	L.F.	1015	1005	LOGAN CLY PIPE / NAT
MANHOLES	EA.	7	7	ATLANTIC PRECAST CONC.
8" WATER	L.F.	570	570	D.I.P. / GRIFFIN PIPE PROD
8" VALVE	EA.	1	1	DRESSER
6" WATER	L.F.	718	718	D.I.P. / GRIFFIN PIPE PROD
6" VALVE (EXCLUDING F.H. VALVES)	EA.	3	3	DRESSER
FIRE HYDRANTS	EA.	2	2	DRESSER

TYPE OF BUILDING: SINGLE FAMILY
 NUMBER OF LOTS: 40
 NUMBER OF WATERHOUSE CONN.: 40
 NUMBER OF SEWERHOUSE CONN.: 40
 DRAINAGE AREA: MIDDLE PATUXENT RIVER



- GENERAL NOTES
- APPROXIMATE LOCATION OF EXISTING MAINS ARE SHOWN. THE CONTRACTOR SHALL TAKE ALL NECESSARY PRECAUTIONS TO PROTECT EXISTING SERVICES AND MAINTAIN UNINTERRUPTED SUPPLY. ANY DAMAGE INCURRED SHALL BE REPAIRED IMMEDIATELY.
 - ALL PIPE ELEVATIONS SHOWN ARE INVERT ELEVATIONS.
 - ALL WATER MAINS TO BE C.I.P. OR D.I.P. UNLESS OTHERWISE NOTED.
 - THE CONTRACTOR SHALL LOCATE EXISTING UTILITIES A MINIMUM OF TWO WEEKS IN ADVANCE OF CONSTRUCTION OPERATIONS IN VICINITY OF UTILITIES.
 - ALL WATER HOUSE CONNECTIONS SHALL BE FOR INSIDE METER SETTING.
 - FOR ALL STANDARD DETAILS, SEE STANDARDS BOUND IN SPECIFICATIONS.
 - THE CONTRACTOR SHALL PROVIDE A JOINT IN ALL SEWER MAINS WITHIN 2'-0" OF EXTERIOR MANHOLE WALLS.
 - SOIL AROUND FIRE HYDRANTS TO BE COMPACTED IN ACCORDANCE WITH SECTION 5-15 OF THE STANDARD SPECIFICATIONS.
 - ALL HORIZONTAL AND VERTICAL CONTROLS ARE BASED ON MARYLAND STATE DATUM.
 - ALL WATER MAINS TO HAVE A MINIMUM OF 3' 1/2' COVER UNLESS OTHERWISE NOTED.
 - TREES ARE TO BE PROTECTED FROM DAMAGE TO MAXIMUM EXTENT. TREES LOCATED WITHIN THE CONSTRUCTION STRIP ARE NOT TO BE REMOVED OR DAMAGED BY THE CONTRACTOR.
 - CLEAR ALL UTILITIES BY A MINIMUM OF 6 INCHES.
 - ALL FIRE HYDRANTS SHALL BE STRAPPED TO TEES AND SHALL BE BUTTRESSED WITH CONCRETE IN ACCORDANCE WITH STANDARD DETAILS.
 - CONTRACTOR SHALL REMOVE TREES, STUMPS AND ROOTS ALONG LINE OF EXCAVATION AS DIRECTED BY THE ENGINEER.
 - ALL SEWERS SHALL BE V.C.P.X., C.S.P.X., A.C.P., OR P.V.C., CLASS 2400 UNLESS OTHERWISE NOTED. (SEE NOTE 22)
 - ALL MANHOLES SHALL BE 4'-0" INSIDE DIAMETER UNLESS OTHERWISE NOTED.
 - PROFILE STATIONS SHALL BE ADJUSTED AS NECESSARY TO CONFORM TO PLAN DIMENSIONS.
 - BLOCK ALL FITTINGS WITH CONCRETE. SEE STANDARDS BOUND IN SPECIFICATIONS.
 - BURY LINE ELEVATIONS ON FIRE HYDRANTS SHALL BE SET TO THE ELEVATIONS SHOWN ON DRAWINGS.
 - CONTRACTOR SHOULD NOTIFY THE FOLLOWING UTILITIES OR AGENCIES AT LEAST FIVE (5) DAYS BEFORE STARTING WORK SHOWN ON THESE PLANS:
 - CHESAPEAKE AND POTOMAC TELEPHONE CO. 725-9976
 - BALTIMORE GAS AND ELECTRIC CO.:
 - UNDERGROUND ELECTRIC DISTRIBUTION ENGR., DAMAGE CONTROL 234-5691
 - UNDERGROUND GAS DISTRIBUTION ENGR. 559-0100
 - BELL TELEPHONE SYSTEM 393-3649
 - LONG DISTANCE CABLE DIVISION 393-3553
 - BUREAU OF UTILITIES 992-2366
 - FOR ALL COPPER W.H.C. UTILIZE FLARED TYPE FITTING.
 - ALL THE TWIN WATER HOUSE CONNECTIONS SHALL BE 1-INCH SIZE, SINGLE WATER HOUSE CONNECTIONS SHALL BE 3/4" COPPER PIPE.
 - W.H.C. TO PASS 1" OVER SEWER LINES CROSSED, S.H.C. TO PASS 1" UNDER WATER MAINS CROSSED.
 - IF A.C.P. PIPE IS USED, CLASS 3300 A.C.P. IS TO BE UTILIZED WHERE SEWER DEPTH EXCEEDS 12 FEET.
 - PLACE REGULATION "MAN WORKING" AND WARNING SIGN AS REQUIRED TO COMPLY WITH MARYLAND STATE HIGHWAY ADMINISTRATION MANUAL OF TRAFFIC CONTROL FOR HIGHWAY CONSTRUCTION AND MAINTENANCE OPERATIONS.



THIS DEVELOPMENT PLAN IS APPROVED FOR SOIL EROSION AND SEDIMENT CONTROL BY THE HOWARD SOIL CONSERVATION DISTRICT.
 Approved: _____ Date: 6/28/83
 Howard S.C.D.

Reviewed for _____ S.C.D. Name: _____ and meets Technical Requirements. Date: 6/28/83 Signature: _____ U.S. Soil Conservation Service
 Sediment Control Measures will be implemented in accordance with Article 14.5 of the Specifications and Road Construction Plans E-83-113.

DEPARTMENT OF PUBLIC WORKS
 HOWARD COUNTY, MARYLAND
 Director of Public Works: _____ Date: 6/28/83
 Chief - Bureau of Engineering: _____ Date: _____
 Chief - Bureau of Utilities: _____ Date: _____
 Chief - Land Development Division: _____ Date: _____

CENTURY ENGINEERING, INC.
 CONSULTING ENGINEERS - PLANNERS
 TOWSON, MARYLAND 21204

CONTRACT NO. 34-1125-D

PLAN & PROFILE
 WATER & SEWER MAINS

VILLAGE OF KINGS CONTRIVANCE
 SECTION 2, AREA 3, PHASE 2, PART II
 6TH ELECTION DISTRICT HOWARD COUNTY, MARYLAND

DRAWING NO. 1 OF 1 SCALE AS NOTED

AS-BUILT AUG. 1983