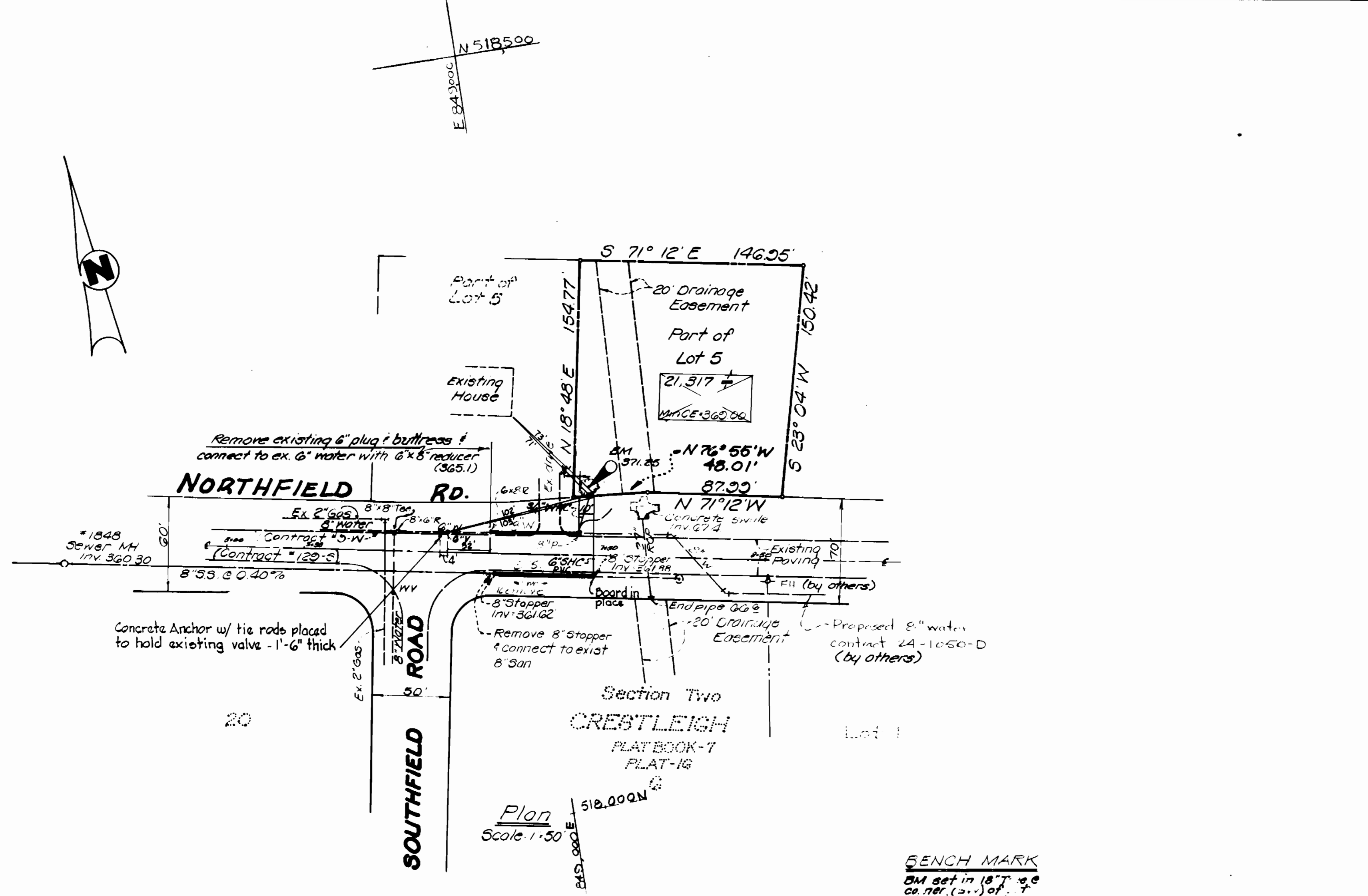
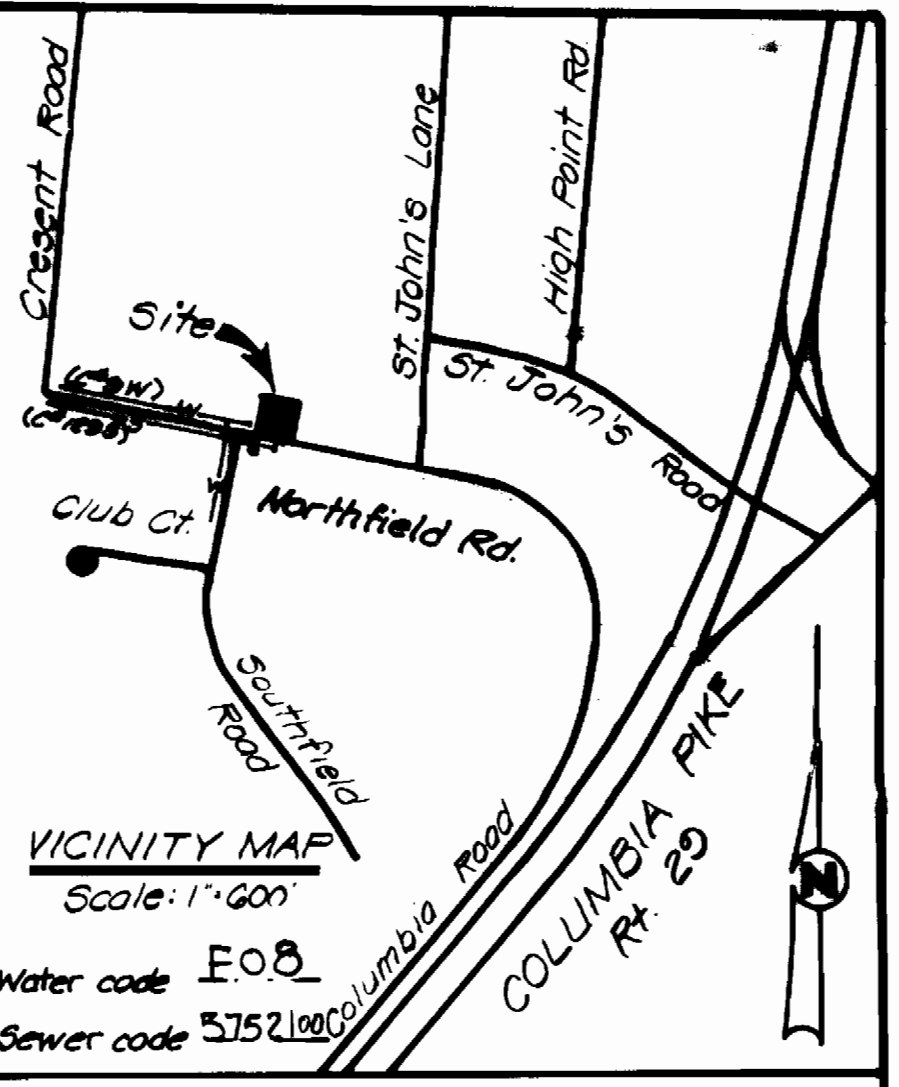
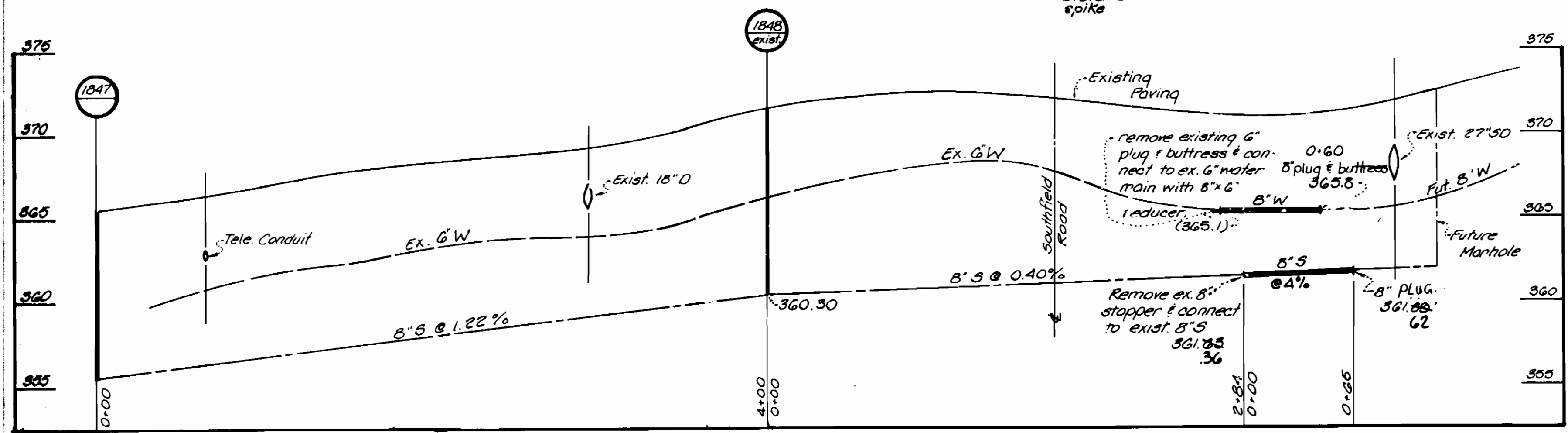


Development Data	
Type of Building	2 S.F. residences
Number of Lots	1
Number of WHC (44')	1
Number of SHC (6')	1
Drainage area	SAVAGE



GENERAL NOTES

1. Approximate location of existing mains are shown. The contractor shall take all necessary precautions to protect existing mains and services and maintain uninterrupted supply. Any damage incurred shall be repaired immediately to the satisfaction of the Engineer, at the Contractor's expense.
2. All horizontal controls are based on Maryland State Coord.
3. All vertical are based on U.S.G.S. datum.
4. All pipe elevations are invert @ elev.
5. Clear all utilities by a minimum of 6'. Clear all poles by 2'-0" minimum or tunnel as required. Any cost incurred to the contractor for tunneling or bracing of poles shall be included in unit prices bid for excavation & backfill.
6. For details not shown on the drawings use Howard County Standard Details.
7. For materials and construction methods use Howard County Standard Specifications.
8. Contractor shall locate existing utilities a minimum of two (2) weeks in advance of construction operations in the vicinity of proposed utilities at his own expense.
9. Contractor shall notify the following utilities or agencies at least five (5) working days before starting work shown on these plans:
 - a) State Highway Administration 531-5533
 - b) Baltimore Gas & Electric Company Underground Electric Distribution (Cus Ser) 685-0123
 - c) Baltimore Gas & Electric Company Underground Gas Distribution (Cus Ser) 685-0123
 - d) Engineering - Damage Control 294-5621
 - e) Miss Utility 1-550-0100
 - f) Chesapeake and Potomac Telephone Co 725-2976
 - g) American Telephone and Telegraph Cable Location Division 393-5553
 - h) Colonial Pipeline Company 781-4641
 - i) Bureau of Utilities Howard County 292-2366
10. Trees are to be protected to maximum extent. Trees located within the construction strip are not to be removed or damaged by the contractor.
11. Contractor shall remove trees, stumps and roots along line of excavation as directed by the engineer. Payment for such removal shall be included in the unit price bid for excavation and backfill.
12. Place regulation 'Men Working and warning signs as required to comply with Maryland State Highway Administration Manual of Traffic Control for Highway Construction and Maintenance Operations.
13. All sewer mains shall be 65 P.K., V.C.P.K. or A.C.P. Class 2400 unless otherwise noted.
14. The contractor shall provide a joint in all sewer mains within 2'-0" of exterior manhole wall.
15. All sanitary sewer house connections shall have a minimum vertical clearance of 12" below all water main crossings.
16. Profile stations shall be adjusted as necessary to conform to plan dimensions.



SEWER MAIN PROFILE
Scale: Hor. 1"=50', Vert. 1"=5'

BENCH MARK
BM set in 18" x 4" cast iron spike
elevation 371.2'
D.C.G. BM 1' to road spike

QUANTITIES			
Item	Estimated	As Built	Material/Supplier
8" Sewer	65 LF	70'	Carlson Belair Sup
8" Water	GOLF	60'	Griffin
8" x 6" reducer		1	North Am. Pipe
8" plug & buttress		1	" " " "

Sediment Control measures will be implemented in accordance with Article No. 15 of the Specifications & with Road Construction Plan F; Drawing, Sediment & Erosion Control.

Reviewed for Howard Soil Conservation District and meets technical requirement.
Signature: *[Signature]* Date: 8-17-83

U.S. SOIL CONSERVATION SERVICE

This Development Plan is approved for Soil Erosion and Sediment Control by the Howard Soil Conservation District.

APPROVED:
Signature: *[Signature]* Date: 8-17-83
Howard S.C.D.

DEPARTMENT OF PUBLIC WORKS
HOWARD COUNTY, MARYLAND

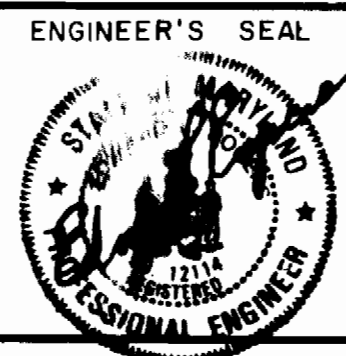
[Signature] 8-25-83
DIRECTOR OF PUBLIC WORKS DATE

[Signature] 8-24-83
CHIEF, BUREAU OF UTILITIES DATE

[Signature] 8-25-83
CHIEF, LAND DEVELOPMENT DIVISION DATE

DEVELOPMENT CONSULTANTS GROUP, INC.

12408 ROUTE 108
CLARKSVILLE, MD. 21029
301-596-9080



DES:	
DRN:	
CHK:	
DATE:	
BY:	NO.
REVISION:	
DATE:	

Public Water Main & Sewer Main Extension
Contract # 24-1123-0

Part of Lot 5
Contract # 24-1123-0
Northfield Road
Section Two
CRISTLEIGH
Tax Map 24
Second Election District
Howard County, Maryland

SCALE: AS SHOWN
SHEET: 1 OF 1