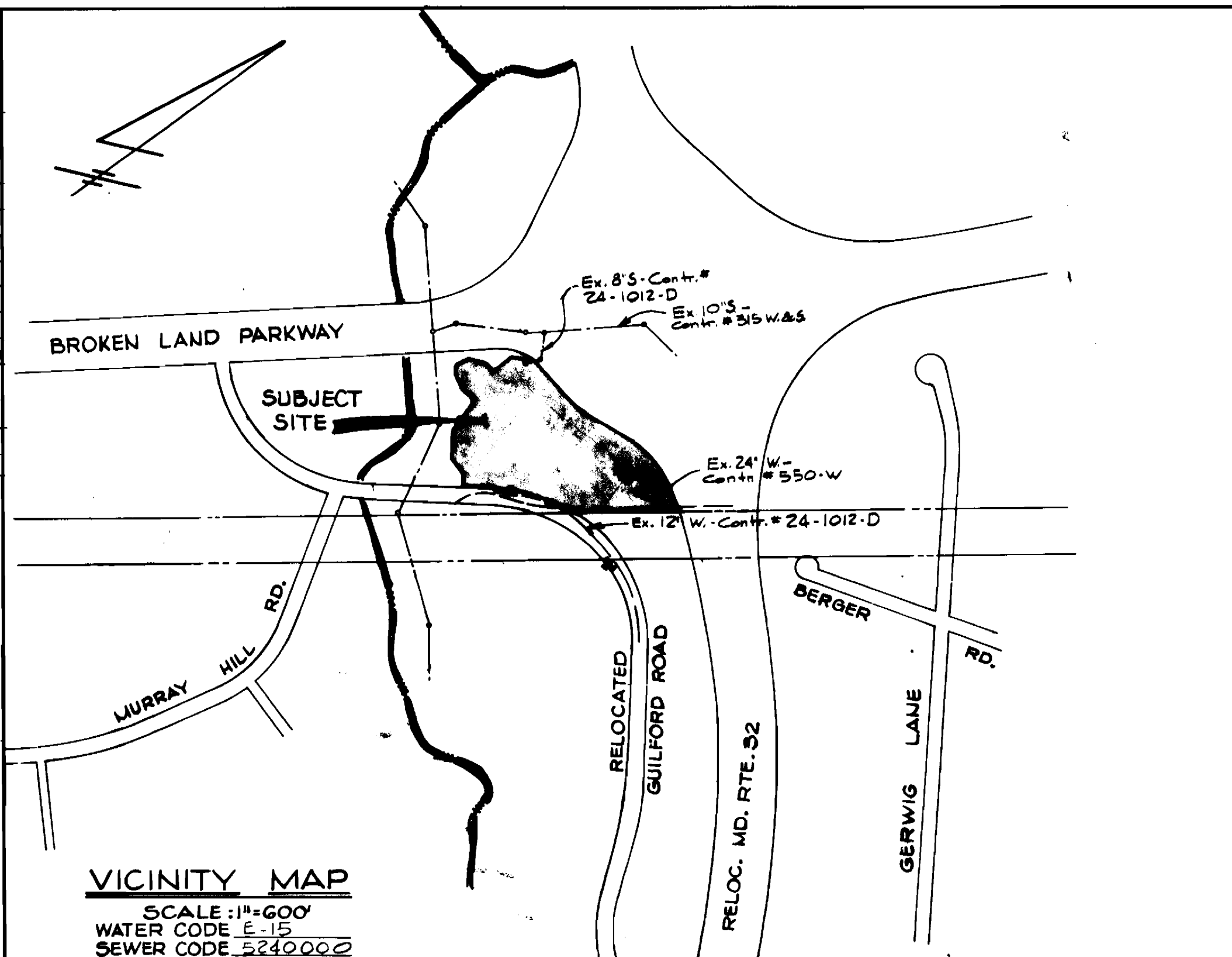


| ITEM | ESTIMATED | AS-BUILT | MATERIAL/SUPPLIER |
|--------------------------|-----------|----------|-------------------|
| 8" San. Hse Conn | 10 LF | 10 LF | A&P W&B Supply |
| 8" Water | 2607 LF | 2605 LF | " " " |
| 6" Water | 116 LF | 93 LF | " " " |
| 6" F.H. & Valve | 5 Ea | 5 Ea | " " " |
| 8" Valve | 3 Ea | 4 Ea | " " " |
| 1/8" H.B. | 7 Ea | 7 Ea | " " " |
| 1/16" H.B. | 2 Ea | 2 Ea | " " " |
| 8" x 8" Tee | 3 Ea | 3 Ea | " " " |
| 8" x 6" Tee | 6 Ea | 6 Ea | " " " |
| 12" x 8" Reducer | 1 Ea | 1 Ea | " " " |
| 6" F.H. & Valve, SALVAGE | 1 Ea | 1 Ea | N/A |
| 1/32" H.B. | 1 Ea | 1 Ea | " " " |
| 1/2" Tapping Sleeve | 1 Ea | 1 Ea | " " " |

* Please Note: Due To Equality Sta 9+08.09 - Sta 9+12.17 8" Pipe Length is Actual Pipe Length Not Length According To Stationing



VICINITY MAP
 SCALE: 1"=600'
 WATER CODE E-15
 SEWER CODE S-2400000

BENCH MARK: ELEVATION: 304.78
 DESCRIPTION: Flange bolt on fire hydrant, sta. 14+50 Guilford Rd.

STATE OF MARYLAND
 DEPARTMENT OF PUBLIC WORKS
 HOWARD COUNTY, MARYLAND
 GEORGE W. STEPHENS, JR. & ASSOC., INC.
 CONSULTING ENGINEERS
 303 ALLEGHENY AVENUE
 TOWSON, MARYLAND, 21204

SEDIMENT CONTROL MEASURES FOR CONTRACT WILL BE IMPLEMENTED IN ACCORDANCE WITH ARTICLE #15 OF THE STANDARD SPECIFICATIONS AND S.D.P. #83-175C
 DEPARTMENT OF PUBLIC WORKS
 HOWARD COUNTY, MARYLAND
 CONTRACT NO. 44-1122-D

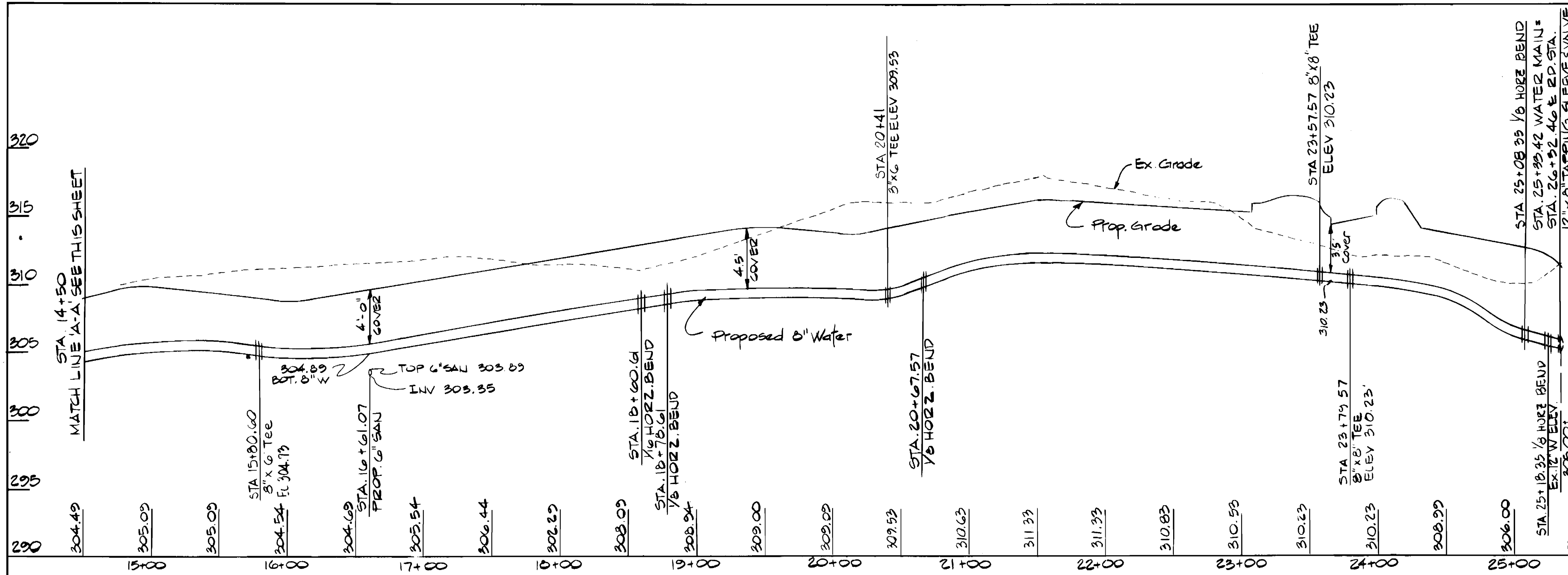
HOWARD SOIL CONSERVATION DISTRICT:
 THIS DEVELOPMENT IS APPROVED FOR SOIL EROSION AND SEDIMENT CONTROL BY THE HOWARD SOIL CONSERVATION DISTRICT.
 APPROVED: HOWARD SOIL CONSERVATION DISTRICT

REVIEWED FOR THE HOWARD SOIL CONSERVATION DISTRICT AND MEETS TECHNICAL REQUIREMENTS.
 SIGNATURE: [Signature] DATE: 7-18-83
 THE UNITED STATES SOIL CONSERVATION SERVICE

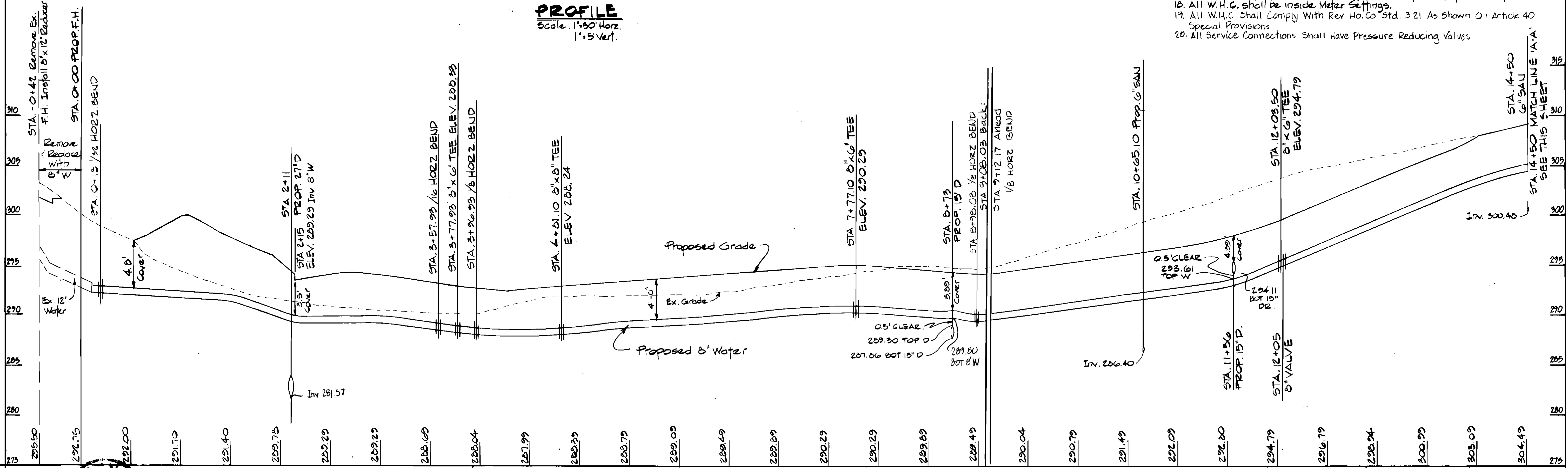
PLAN AND PROFILE FOR PROPOSED WATER
 RIVERS CORPORATE PARK
 PARCEL "A"
 SECTION 2 - AREA 1
 HOWARD COUNTY, MARYLAND
 ELECTION DISTRICT #6

DRAWING NO. 1 OF 2
 SCALE 1"=50'
 DESIGN-PRC
 DRAWN- [Signature]
 CHECK-REC
 PROJ. # 4772

AS BUILT May, 1984



PROFILE
Scale: 1"=50' Horiz.
1"=5' Vert.



PROFILE
Scale: 1"=50' Horiz.
1"=5' Vert.

- GENERAL NOTES:**
- Construction of water mains shall be in strict accordance with the "Standard Specifications And Details" of Howard County. Any damage incurred shall be repaired immediately at the contractor's expense.
 - All horizontal controls are based on the Maryland State Coordinate System.
 - All vertical controls are based on U.S.G.S. datum.
 - Clear all utilities by a minimum of 6' clear. Clear all poles by 2'-0" minimum or tunnel as required.
 - Contractor shall locate existing utilities in vicinity of proposed utilities in advance of construction operations.
 - Contractor shall notify the following utilities or agencies at least five (5) days before starting work:
 "Miss Utility" (Collect) _____ 1-550-0100
 Baltimore Gas & Electric Co. - Undergrd. Electric Distribution Engineering - "Damage Control", Mr. G.U. Zeller, Manager _____ 234-5601
 Baltimore Gas & Electric Co. - Undergrd. Gas Distribution Engineering, Mr. Bell _____ 234-5533
 Chesapeake & Potomac Telephone Co. _____ 725-9976
 Bureau of Utilities (Howard County) _____ 992-2366
 - Contractor shall remove trees, stumps and roots along lines of excavation as directed by the engineer. Payment for such removal shall be included in the unit price bid for "Excavation And Backfill For water Mains".
 - Place regulation "Men Working" and warning signs as required to comply with the Maryland State Highway Administration "Manual For Highway Construction And Maintenance Operations".
 - All water mains to be C.I.P. or D.I.P. unless noted otherwise.
 - Top of water mains shall have a minimum cover of 3.5' unless noted otherwise.
 - All valves shall be strapped to tees in accordance with standard details.
 - Block all fittings with concrete. See standard details.
 - Bury line elevations on fire hydrants shall be set to the elevations shown on the drawings. All fire hydrants will be strapped and buttressed with concrete in accordance with the standard details. Soil around the fire hydrant will be compacted in accordance with Section 37.01 & 37.05 Of The Standard Details.
 - All water main elevations shown are invert elevations.
 - Sediment control measures for this contract will be implemented in accordance with the "Grading And Sediment And Erosion Control" plan.
 - Water mains and water main connections must be placed so that there is a minimum of 1'-0" separation from the sanitary sewer and sewer house connection as they pass above it.
 - Minimum crimp radius will be as specified by the pipe manufacturer.
 - All W.H.C. shall be inside Meter Settings.
 - All W.H.C. shall Comply With Rev. Ho. Co. Std. 321 As Shown On Article 40 Special Provisions.
 - All Service Connections Shall Have Pressure Reducing Valves.

DEPARTMENT OF PUBLIC WORKS
HOWARD COUNTY, MARYLAND

George W. Stephens, Jr. & Assoc., Inc.
CONSULTING ENGINEERS
303 ALLEGHENY AVENUE
TOWSON, MARYLAND, 21204

SEDIMENT CONTROL MEASURES FOR CONTRACT WILL BE IMPLEMENTED IN ACCORDANCE WITH ARTICLE #15 OF THE STANDARD SPECIFICATIONS AND S.D.P.# 83-17.5C

DEPARTMENT OF PUBLIC WORKS
HOWARD COUNTY, MARYLAND

HOWARD SOIL CONSERVATION DISTRICT:
THIS DEVELOPMENT IS APPROVED FOR SOIL EROSION AND SEDIMENT CONTROL BY THE HOWARD SOIL CONSERVATION DISTRICT.

BY: Roberta Zielins 7-12-83
APPROVED: HOWARD SOIL CONSERVATION DISTRICT

REVIEWED FOR THE HOWARD SOIL CONSERVATION DISTRICT AND MEETS TECHNICAL REQUIREMENTS.

SIGNATURE: James M. Lohm 7-12-83
DATE: 7-12-83
THE UNITED STATES SOIL CONSERVATION SERVICE

CONTRACT NO. 44-1122-D

PLAN AND PROFILE
PROPOSED WATER

RIVERS CORPORATE PARK
SECTION 2, AREA 1, PARCEL 'A'

HOWARD COUNTY, MARYLAND ELECTION DISTRICT #6

DRAWING NO. 2 OF 2

SCALE AS SHOWN

DESIGN: _____
DRAWN: _____
CHECK: _____
PROJ.#4772

AS BUILT MAY, 1984