

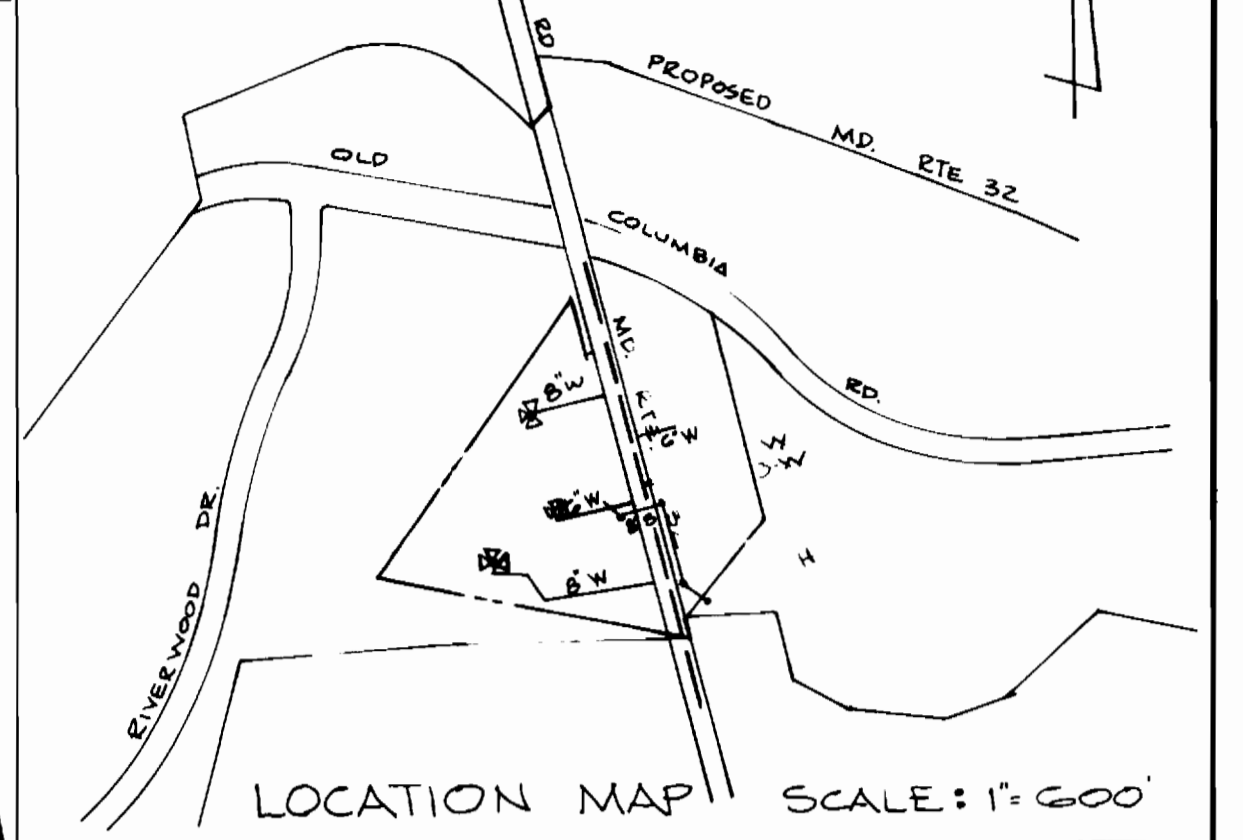
**GENERAL NOTES**

- APPROXIMATE LOCATION OF EXISTING MAINS ARE SHOWN. THE CONTRACTOR SHALL TAKE THE NECESSARY PRECAUTIONS TO PROTECT EXISTING MAINS AND SERVICES AND MAINTAIN UNINTERRUPTED SUPPLY. ANY DAMAGE INCURRED SHALL BE REPAIRED IMMEDIATELY TO THE SATISFACTION OF THE ENGINEER, AT THE CONTRACTOR'S EXPENSE.
- ALL HORIZONTAL CONTROLS ARE BASED ON MARYLAND STATE COORDINATES.
- ALL VERTICAL CONTROLS ARE BASED ON U.S.G.S. DATUM.
- ALL PIPE ELEVATIONS SHOWN ARE INVERT ELEVATIONS.
- CLEAR ALL UTILITIES BY A MINIMUM OF 6'. CLEAR ALL POLES BY 2'-0" MINIMUM OR TUNNEL AS REQUIRED. ANY COST INCURRED BY THE CONTRACTOR FOR TUNNELING OR BRACING AT POLES SHALL BE INCLUDED IN UNIT PRICES BID FOR EXCAVATION AND BACKFILL.
- FOR DETAILS NOT SHOWN ON THE DRAWINGS USE HOWARD COUNTY STANDARD DETAILS.
- FOR MATERIALS AND CONSTRUCTION METHODS USE HOWARD COUNTY STANDARD SPECIFICATIONS.
- CONTRACTOR SHALL LOCATE EXISTING UTILITIES A MINIMUM OF TWO (2) WEEKS IN ADVANCE OF CONSTRUCTION OPERATIONS IN THE VICINITY OF PROPOSED UTILITIES AT HIS OWN EXPENSE.
- CONTRACTOR SHALL NOTIFY THE FOLLOWING UTILITIES OR AGENCIES AT LEAST FIVE (5) WORKING DAYS BEFORE STARTING WORK SHOWN ON THESE PLANS:
 

STATE HIGHWAY ADMINISTRATION	531-5533
BALTIMORE GAS & ELECTRIC CO. (UNDERGROUND ELECTRIC DISTRIBUTION)	685-0123
BALTIMORE GAS & ELECTRIC CO. (UNDERGROUND GAS DISTRIBUTION)	685-0123
CUSTOMER SERVICE	234-5621
ENGINEERING DAMAGE CONTROL	(1) 559-0100
MISS UTILITY	
CHESAPEAKE AND POTOMAC (C&P)	
TELEPHONE COMPANY	725-9976
AMERICAN TELEPHONE AND TELEGRAPH	
CABLE LOCATION DIVISION	393-3553
COLONIAL PIPELINE COMPANY	781-4641
BUREAU OF UTILITIES HOWARD COUNTY 902-2566	
- CONTRACTOR SHALL REMOVE TREES, STUMPS AND ROOTS ALONG LINE OF EXCAVATION AS DIRECTED BY THE ENGINEER. PAYMENT FOR SUCH REMOVAL SHALL BE INCLUDED IN THE UNIT PRICE BID FOR EXCAVATION AND BACKFILL.

TYPE OF BUILDINGS	OFFICE & WAREHOUSE	7
NUMBER OF LOTS		4
NUMBER OF WATER HOUSE CONNECTIONS		7
NUMBER OF SEWER HOUSE CONNECTIONS		7
DRAINAGE AREA	LITTLE PATUXENT	

WATER CODE E16  
SEWER CODE: 5290000



- GENERAL NOTES (CONTINUED)**
- PLACE REGULATIONS "MEN WORKING" AND WARNING SIGNS AS REQUIRED TO COMPLY WITH MARYLAND STATE HIGHWAY ADMINISTRATION MANUAL OF TRAFFIC CONTROL FOR HIGHWAY CONSTRUCTION AND MAINTENANCE OPERATIONS.
  - ALL WATER MAINS TO BE C.I.P. OR D.I.P. UNLESS OTHERWISE NOTED.
  - TOP OF ALL WATER MAINS TO HAVE A MINIMUM OF 3'-1/2 FEET COVER UNLESS OTHERWISE NOTED.
  - VALVES ADJACENT TO TREES SHALL BE STRAPPED TO TREES.
  - BURY ALL FITTINGS WITH CONCRETE.
  - BURY LINE ELEVATIONS ON FIRE HYDRANTS SHALL BE SET TO THE ELEVATIONS SHOWN ON THE DRAWINGS. ALL FIRE HYDRANTS SHALL BE STRAPPED AND BUTTRESSED WITH CONCRETE IN ACCORDANCE WITH STD. DETAIL-S. SOIL AROUND THE FIRE HYDRANT TO BE COMPACTED IN ACCORDANCE WITH SECTION 37-1 OF THE STD SPECIFICATIONS.
  - ALL WATER HOUSE CONNECTIONS SHALL BE FOR AN INSIDE METER SETTING, UNLESS OTHERWISE NOTED.
  - THE CONTRACTOR SHALL NOT OPERATE ANY WATER MAIN VALVES ON THE EXISTING SYSTEM.
  - ALL SEWER MAINS SHALL BE C.S.P., V.C.P.X., P.V.C. OR A.C.P. CLASS 2400 UNLESS OTHERWISE NOTED.
  - THE CONTRACTOR SHALL PROVIDE A JOINT IN ALL SEWER MAINS WITHIN 2'-0" OF EXTERIOR MANHOLE WALL.
  - ALL MANHOLES SHALL BE 4'-0" INSIDE DIAMETER, UNLESS OTHERWISE NOTED.
  - MANHOLES SHOWN WITH 12" AND 18" WALLS ARE BECK MANHOLES ONLY.
  - MANHOLES DESIGNATED W.T. IN PLAN AND PROFILE SHALL HAVE WATERTIGHT FRAME AND COVERS, STANDARD DETAIL S-12 (R.C.R.-G3A), WHERE WATERTIGHT MANHOLE FRAME AND COVER IS USED, SET TOP OF FRAME 1'-0" ABOVE FINISHED GRADE.
  - HOUSES WITH THE SYMBOL "C.N.S." INDICATED THAT CELLAR CAN NOT BE SERVED.
  - ALL S.H.C. WHERE PROPOSED C.D. WILL BE IN PAVEMENT AREAS SHOULD HAVE RECESSO CAP TO GRADE.
  - THE TOP ELEVATION OF ALL S.F.F. MANHOLES SHOULD BE SET A MINIMUM OF 18" ABOVE EXISTING GROUND AS SHOWN ON STANDARD DETAILS S-1, S-2, S-3.
  - ALL P.V.C. PIPE IS TO BE INSTALLED IN ACCORDANCE WITH MANUFACTURER'S AND HOWARD COUNTY SPECIFICATIONS.
  - WATER MAIN AND WATERHOUSE CONNECTIONS MUST HAVE AT LEAST ONE FOOT SEPARATION FROM THE SEWER MAIN AND SEWER HOUSE CONNECTION AS THEY PASS ABOVE IT.
  - CONTRACTOR TO USE EXTREME CAUTION WHEN CROSSING GAS MAIN WITH UTILITIES.
  - FOR 2" WATER SERVICE CONNECTION OUTSIDE METER SETTING USE THE DETAILS AS SHOWN ON THE APPENDIX #1 OF SPECIAL PROVISIONS ARTICLE 40.00.

REVISED ITEMS	DATE	BY
FOUR STORM DRAINS CROSSING IN PROFILE	7-14-83	ELN

BILL OF MATERIALS (PUBLIC ONLY)			
ITEM	ESTIMATED	AS-BUILT	SUPPLIER
8" D.I.P.	1103 LF	1100 LF	U.S. PIPE
6" D.I.P.	130 LF	130 LF	U.S. PIPE
8" VALVE	6	6	MUELLER
6" VALVE	5	5	MUELLER
F.H.	4	4	AMERICAN PARKING
8" V.C.P.X.	540 LF	540 LF	CERTAIN TEEP
SAN. MH.	3	3	ATLANTIC PRECAST
2" VALVE	2	2	FORD
18" VALVE	1	1	MUELLER
2" METER VAULT	2	2	
2" W.H.C.	45 LF	45	TYPE 'K' SPT / REVERE

DEPARTMENT OF PUBLIC WORKS  
HOWARD COUNTY, MARYLAND  
CHIEF BUREAU OF UTILITIES DATE: 7/14/83  
CHIEF LAND DEVELOPMENT DIVISION DATE: 7/14/83

REVIEWED FOR HOWARD SOIL CONSERVATION DISTRICT AND MEETS TECHNICAL REQUIREMENT.  
APPROVED: James M. Helm  
SIGNATURE: [Signature]  
DATE: 6-13-83  
U.S. SOIL CONSERVATION SERVICE

DEPARTMENT OF PUBLIC WORKS  
HOWARD COUNTY, MARYLAND  
CONTRACT No. 24-1116-0  
DIRECTOR OF PUBLIC WORKS DATE: 7/14/83  
CHIEF BUREAU OF ENGINEERING DATE: 7/14/83

THIS DEVELOPMENT PLAN IS APPROVED FOR SOIL EROSION AND SEDIMENT CONTROL BY THE HOWARD COUNTY CONSERVATION DISTRICT.  
APPROVED: [Signature]  
SIGNATURE: [Signature]  
DATE: 6/13/83  
HOWARD COUNTY

PLAN OF  
WATER AND SEWER MAINS

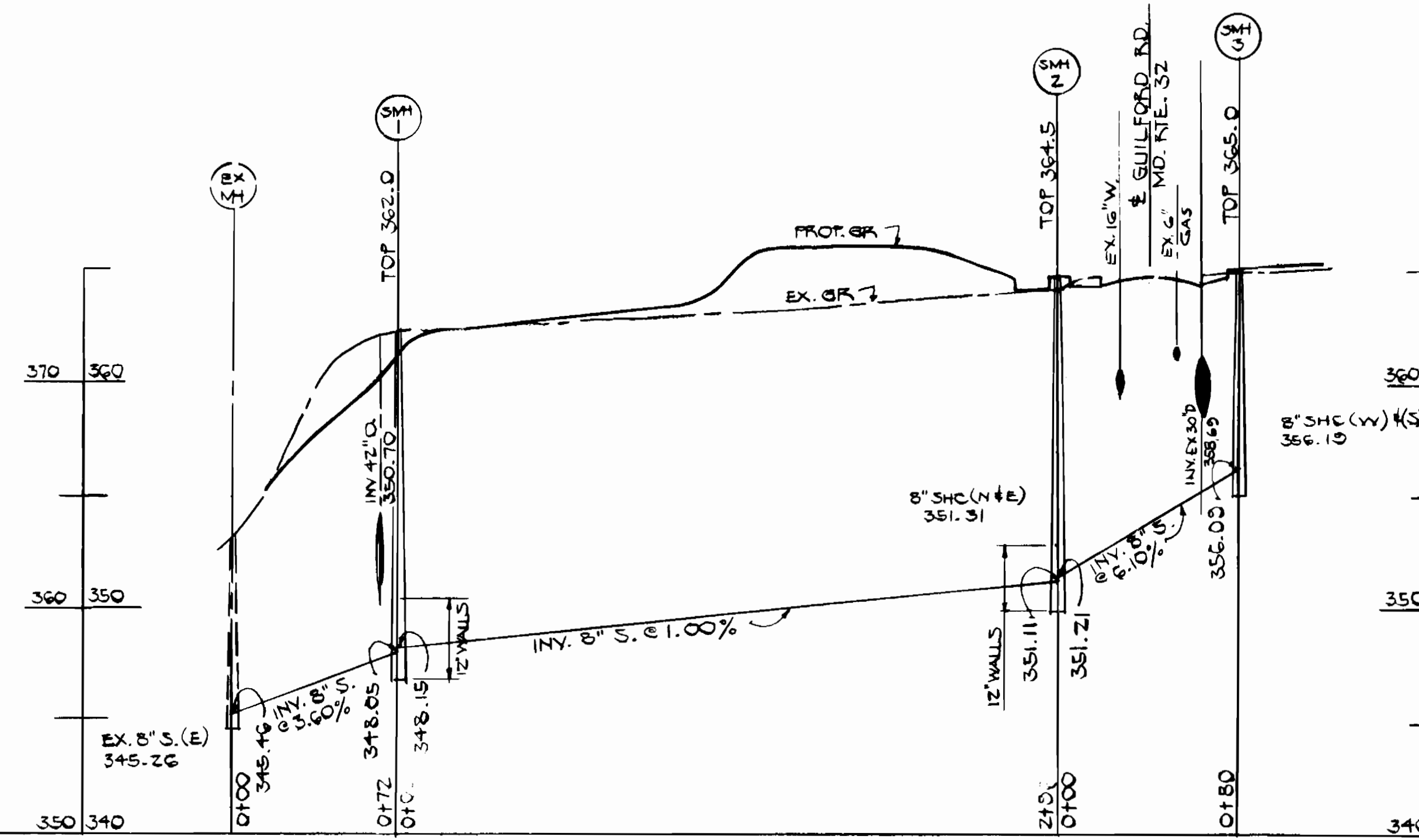
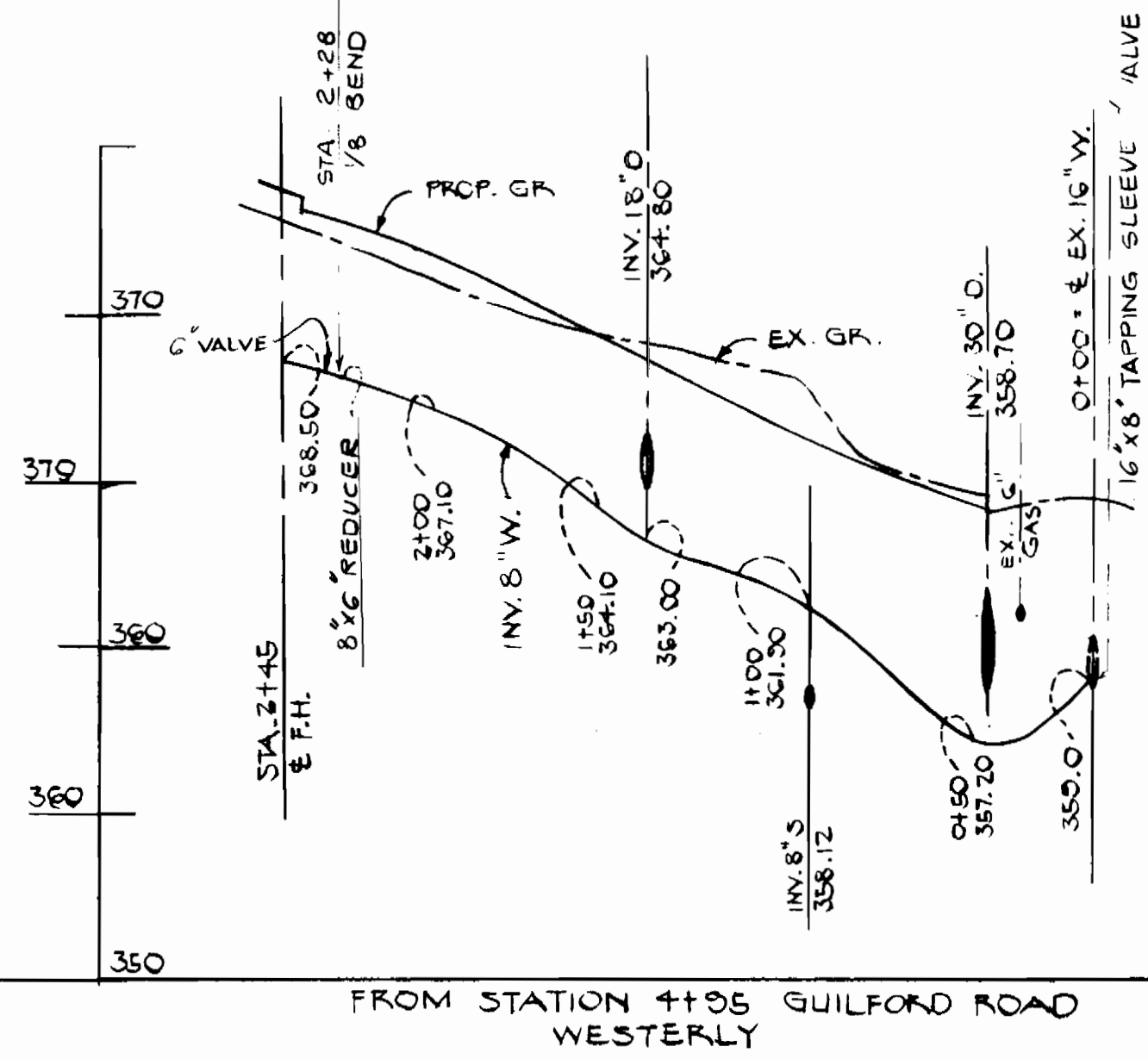
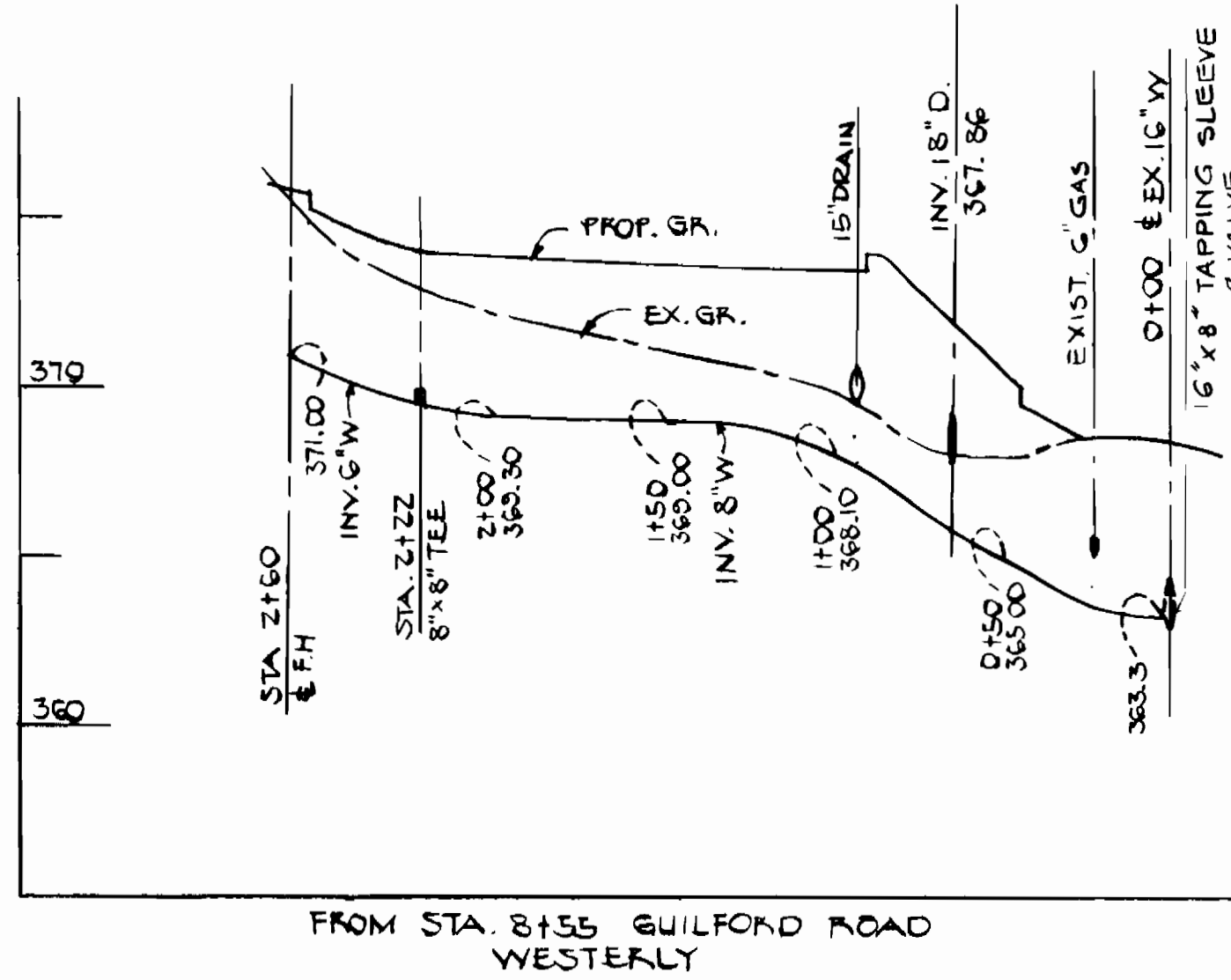
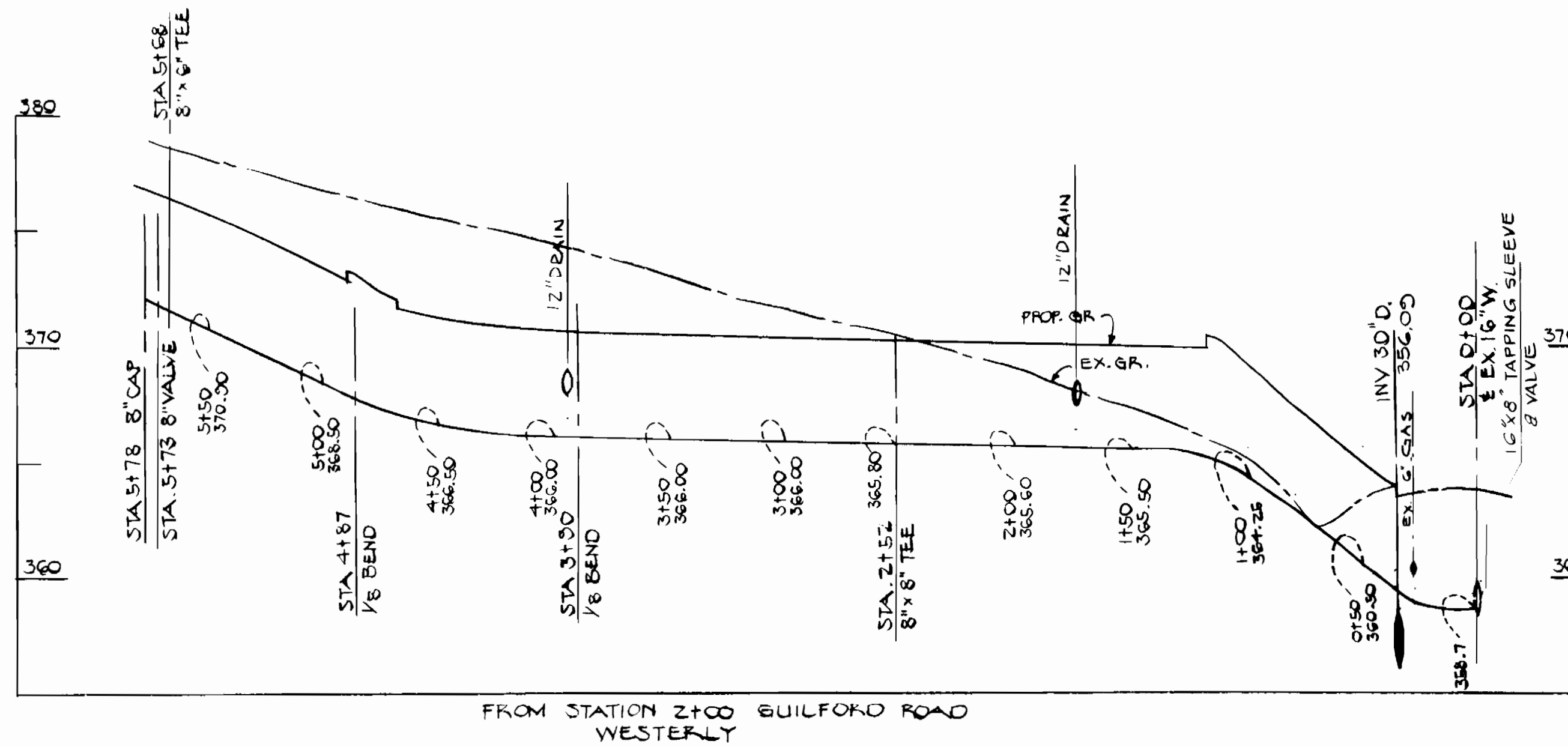
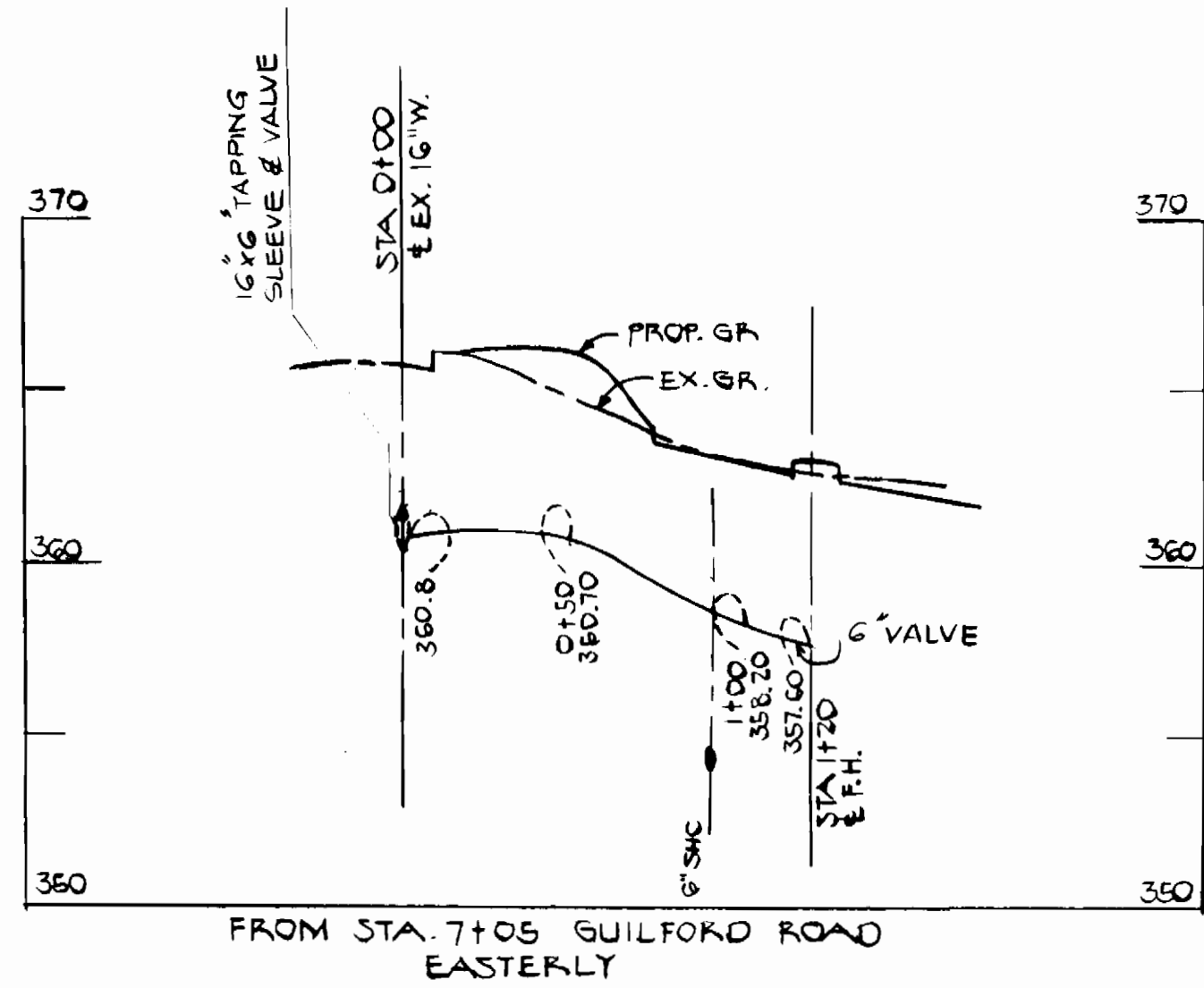
RIVERS CORPORATE PARK  
SECTION 1, AREA 1, PARCELS N-1, N-2, E-1 & E-2  
6<sup>TH</sup> ELECTION DISTRICT, HOWARD COUNTY, MARYLAND

DRAWING  
No 1  
OF 2

SCALE  
1"=50'

45-BUILT JULY 27, 1984





DEPARTMENT OF PUBLIC WORKS  
HOWARD COUNTY, MARYLAND

REVIEWED FOR HOWARD SOIL CONSERVATION DISTRICT AND MEETS TECHNICAL REQUIREMENT.

APPROVED FOR HOWARD COUNTY CONSERVATION DISTRICT.

REVISOR: *[Signature]* DATE: 7-11-83  
CHIEF BUREAU OF UTILITIES

CHIEF LAND DEVELOPMENT DIVISION DATE: 7-11-83

HUDKINS ASSOCIATES INC.  
ENGINEERS - SURVEYORS - LANDSCAPE ARCHITECTS  
SUITE 101 SHELL BUILDING - 200 E. JOPPA ROAD  
TOWSON, MARYLAND 21204

DEPARTMENT OF PUBLIC WORKS  
HOWARD COUNTY, MARYLAND.

APPROVED FOR HOWARD COUNTY CONSERVATION DISTRICT.

REVISOR: *[Signature]* DATE: 7-12-83  
DIRECTOR, OF PUBLIC WORKS

CHIEF - BUREAU OF ENGINEERING DATE: 7-14-83

THIS DEVELOPMENT PLAN IS APPROVED FOR SOIL EROSION AND SEDIMENT CONTROL BY THE HOWARD COUNTY CONSERVATION DISTRICT.

APPROVED: *[Signature]* DATE: 6-13-83  
HOWARD COUNTY S.C.D.

CONTRACT No. 24-1116-D

PLAN OF  
WATER AND SEWER MAINS

RIVERS CORPORATE PARK  
SECTION 1, AREA 1, PARCELS N-1, N-2, E-1 & E-2  
6TH ELECTION DISTRICT, HOWARD COUNTY, MARYLAND

REVISOR: *[Signature]* DATE: 9-14-83  
FOUR - STORM DRAIN CROSSING IN PROFILE

DRAWING  
No 2  
OF 2

SCALE  
HORZ: 1"=50'  
VERT: 1"=5'

AS-BUILT JULY 27, 1984