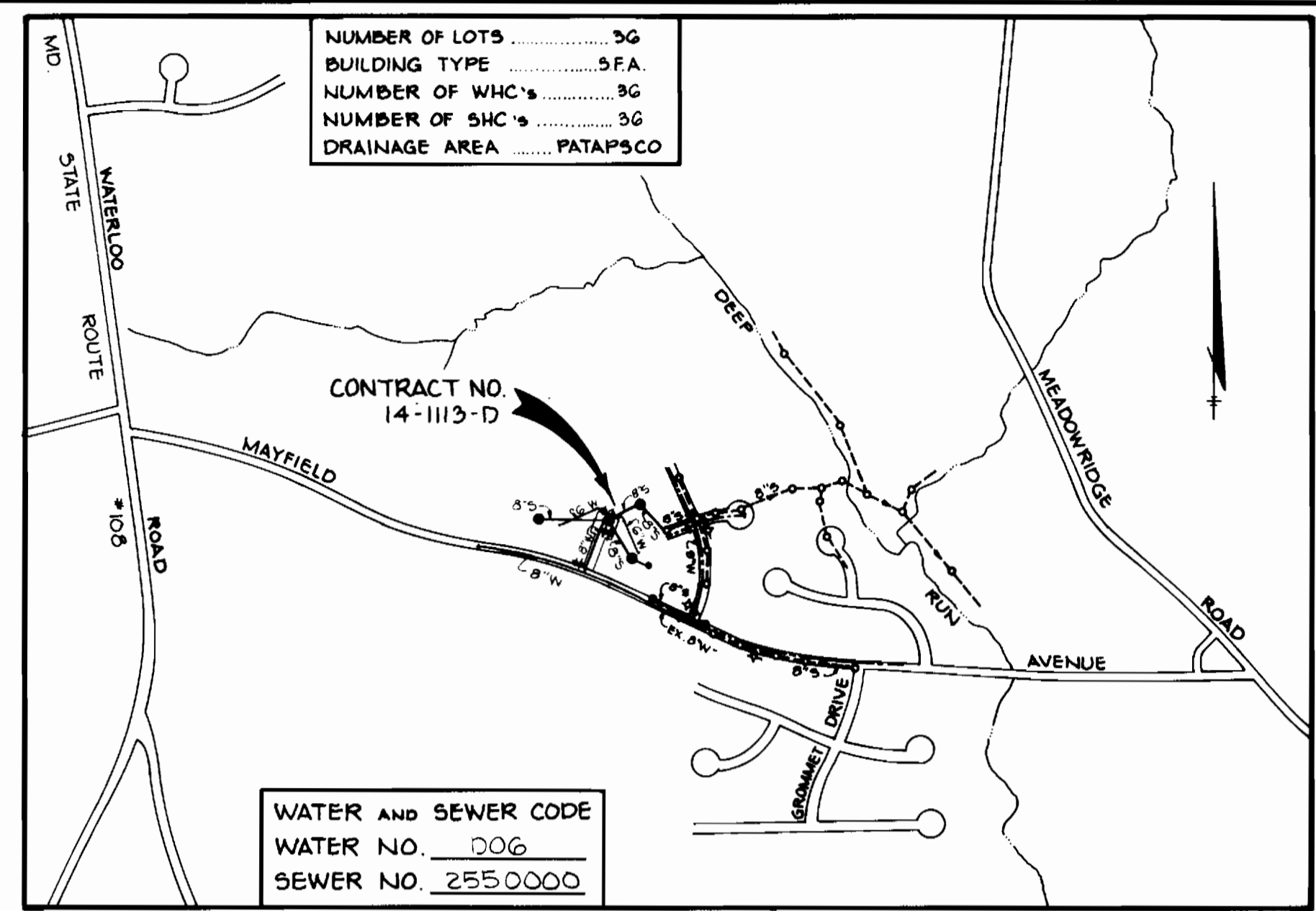


HOWARD SOIL CONSERVATION DISTRICT  
 REVIEWED FOR HOWARD SOIL CONSERVATION DISTRICT  
 AND MEETS TECHNICAL REQUIREMENTS.  
*Robert M. Hahn* 7-12-83  
 U.S. SOIL CONSERVATION SERVICE DATE  
 THIS PLAN IS APPROVED FOR SOIL EROSION AND SEDIMENT  
 CONTROL BY THE HOWARD SOIL CONSERVATION DISTRICT.  
*Robert M. Hahn* 7-12-83  
 HOWARD SOIL CONSERVATION DISTRICT DATE

SEDIMENT CONTROL MEASURES FOR THIS CONTRACT WILL BE  
 IMPLEMENTED IN ACCORDANCE WITH ARTICLE 116 OF THE  
 HOWARD COUNTY STANDARD SPECIFICATIONS AND AS PER  
 ROAD CONSTRUCTION PLANS #F-83-101

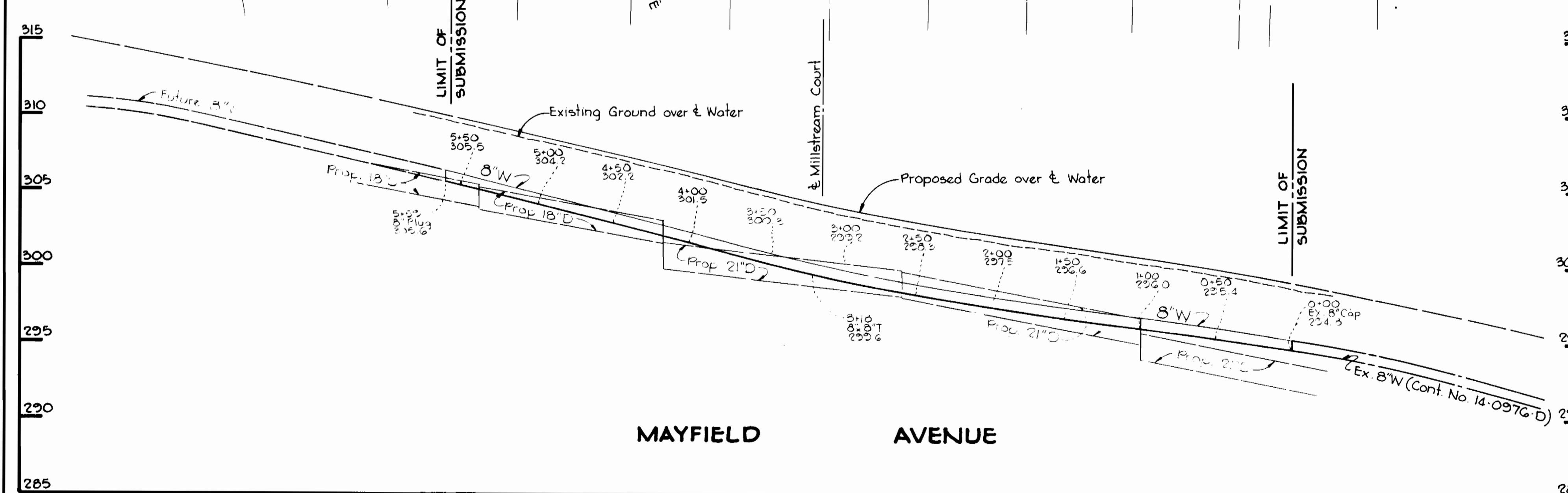


VICINITY MAP  
 SCALE: 1" = 600'

GENERAL NOTES

1. THE APPROXIMATE LOCATIONS OF EXISTING MAINS ARE SHOWN. THE CONTRACTOR SHALL TAKE ALL NECESSARY PRECAUTIONS TO PROTECT EXISTING UTILITIES AND TO MAINTAIN UNINTERRUPTED SERVICE. ANY DAMAGE INCURRED DUE TO THE CONTRACTOR'S OPERATION SHALL BE REPAIRED IMMEDIATELY AT THE CONTRACTOR'S EXPENSE.
2. ALL HORIZONTAL CONTROLS ARE BASED ON MARYLAND STATE COORDINATES.
3. ALL VERTICAL CONTROLS ARE BASED ON U.S.G.S. DATUM.
4. ALL PIPE ELEVATIONS SHOWN ARE INVERT ELEVATIONS.
5. CLEAR ALL UTILITIES BY A MINIMUM OF 6" CLEAR ALL POLES BY 2'-0" MINIMUM OR TUNNEL AS REQUIRED. ANY COST INCURRED TO THE CONTRACTOR FOR TUNNELING OR BRACING AT POLES SHALL BE INCLUDED IN UNIT PRICES BID FOR EXCAVATION AND BACKFILL.
6. FOR DETAILS NOT SHOWN ON THE DRAWING USE HOWARD COUNTY STANDARD DETAILS.
7. FOR MATERIALS AND CONSTRUCTION METHODS USE HOWARD COUNTY STANDARD SPECIFICATIONS.
8. CONTRACTOR SHALL LOCATE EXISTING UTILITIES A MINIMUM OF TWO (2) WEEKS IN ADVANCE OF CONSTRUCTION OPERATIONS IN THE VICINITY OF PROPOSED UTILITIES AT HIS OWN EXPENSE.
9. CONTRACTOR SHALL NOTIFY THE FOLLOWING UTILITIES OR AGENCIES AT LEAST FIVE (5) WORKING DAYS BEFORE STARTING WORK SHOWN ON THESE PLANS:
  - BALTIMORE GAS AND ELECTRIC COMPANY - UNDERGROUND ELECTRIC DISTRIBUTION CUSTOMER SERVICE 685-0128
  - BALTIMORE GAS AND ELECTRIC COMPANY - UNDERGROUND GAS DISTRIBUTION CUSTOMER SERVICE 685-0128
  - ENGINEER - "DAMAGE CONTROL" 234-5621
  - "MISS UTILITY" 1-552-0100
  - CHESAPEAKE AND POTOMAC (C&P) TELEPHONE COMPANY 725-9976
  - AMERICAN TELEPHONE AND TELEGRAPH - CABLE LOCATION DIVISION 993-3553
  - COLONIAL PIPELINE COMPANY 781-4641
  - BUREAU OF UTILITIES HOWARD COUNTY 992-2966
10. TREES ARE TO BE PROTECTED FROM DAMAGE TO MAXIMUM EXTENT. TREES LOCATED WITHIN THE CONSTRUCTION STRIP ARE NOT TO BE REMOVED OR DAMAGED BY THE CONTRACTOR.
11. CONTRACTOR SHALL REMOVE TREES, STUMPS AND ROOTS ALONG LINE OF EXCAVATION AS DIRECTED BY THE ENGINEER. PAYMENT FOR SUCH REMOVAL SHALL BE INCLUDED IN THE UNIT PRICE BID FOR EXCAVATION / BACKFILL.
12. PLACE REGULATION "MEN WORKING" AND WARNING SIGNS AS REQUIRED TO COMPLY WITH MARYLAND STATE HIGHWAY ADMINISTRATION MANUAL OF TRAFFIC CONTROL FOR HIGHWAY CONSTRUCTION AND MAINTENANCE OPERATIONS.
13. ALL WATER MAINS TO BE C.I.P. OR D.I.P. UNLESS OTHERWISE NOTED.
14. TOP OF ALL WATER MAINS TO HAVE A MINIMUM OF 3/4" COVER UNLESS OTHERWISE NOTED.
15. VALVES ADJACENT TO TREES SHALL BE STRAPPED TO TREES.
16. BLOCK ALL FITTINGS WITH CONCRETE.
17. BURY LINE ELEVATIONS ON FIRE HYDRANTS SHALL BE SET TO THE ELEVATIONS SHOWN ON THE DRAWING. ALL FIRE HYDRANTS SHALL BE STRAPPED AND BUTTRESSED WITH CONCRETE IN ACCORDANCE WITH STANDARD DETAILS. SOIL AROUND THE FIRE HYDRANT TO BE COMPACTED IN ACCORDANCE WITH SECTION 3701 & 3705 OF THE STANDARD SPECIFICATIONS.
18. ALL WATER HOUSE CONNECTIONS SHALL BE SET FOR INSIDE METER SETTING.
19. THE CONTRACTOR SHALL NOT OPERATE ANY WATER MAIN VALVES ON THE EXISTING SYSTEM.
20. ALL SEWER MAINS SHALL BE C.S.P., V.C.P. OR ACP CLASS 2400 UNLESS OTHERWISE NOTED.
21. THE CONTRACTOR SHALL PROVIDE A JOINT IN ALL SEWER MAINS WITHIN 2'-0" OF EXTERIOR MANHOLE WALLS.
22. ALL MANHOLES SHALL BE 4'-0" INSIDE DIAMETER, UNLESS OTHERWISE NOTED.
23. MANHOLES DESIGNATED W.T. IN PLAN AND PROFILE SHALL HAVE WATERTIGHT FRAME AND COVERS, STANDARD DETAIL G-552. WHERE WATERTIGHT MANHOLE FRAME AND COVER IS USED, SET TOP OF FRAME 1'-6" ABOVE FINISHED GRADE.
24. HOUSES WITH THE SYMBOL C.N.S. INDICATES THAT CELLAR CAN NOT BE SERVED.
25. NO PIPE SHALL BE LAID UNTIL LINES OF EXCAVATION HAVE BEEN BROUGHT TO SUBGRADE.
26. FOR ALL COPPER WATER HOUSE CONNECTIONS, UTILIZE FLARE TYPE FITTINGS ONLY.

PLAN  
 SCALE: 1" = 50'



PROFILES  
 Scale: H: 1" = 50'  
 V: 1" = 5'

ITEM	QUANTITIES		SUPPLIER
	PROPOSED	AS-BUILT	
Fire Hydrants	2	2	Muellor
8" Water	840	840	DIP AMPTON/SHIFFER cl. 52
6" Water	525	503	"
8" Valves	1	1	MUELLER
6" Valves EXCL. F.W. VALVES	2	2	"
3/4" W.H.C.	2	657	"
1" W.H.C.	2	302	"
Manholes	37	33	ATLANTIC PRECAST
8" Sewer	890	878	P.V.C. CERTAIN-TEED
6" SHC	730	823	"
Lamphole	1	1	"



DEPARTMENT OF PUBLIC WORKS  
 HOWARD COUNTY, MARYLAND  
 Director of Public Works: *John E. Namm* 7-19-83  
 Chief - Bureau of Utilities: *Robert M. Hahn* 7-18-83  
 Chief - Bureau of Engineering: *John E. Namm* 7-18-83  
 Chief - Land Development: *Robert M. Hahn* 7-18-83

TRACY, SCHULTE & ASSOCIATES INC.  
 planning - architecture - engineering  
 8450 Baltimore National Pike Suite 34 Ellicott City, Maryland 21043

No	Date	Revisions
1	1-11-84	Adjusted F.H. depth in Millstream Court

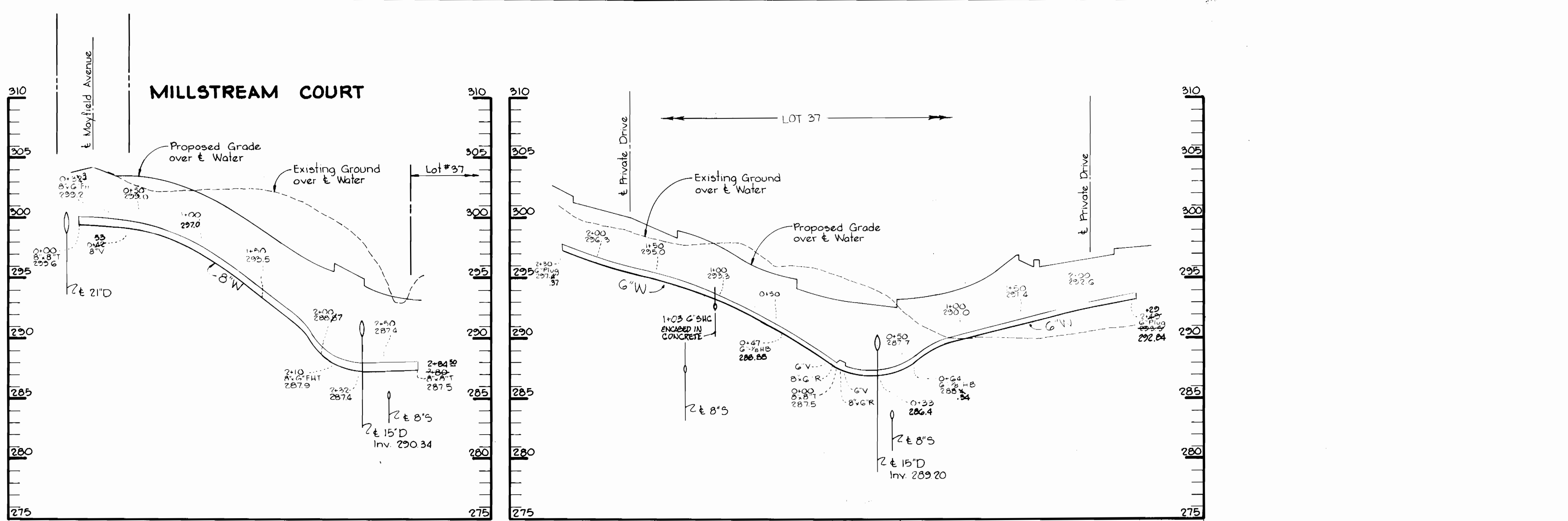
CONTRACT NO. 14-1113-D

PLAN OF  
 WATER AND SEWER MAINS

THOMPSONS PURCHASE  
 SECTION 3, AREA 1  
 1ST ELECTION DISTRICT

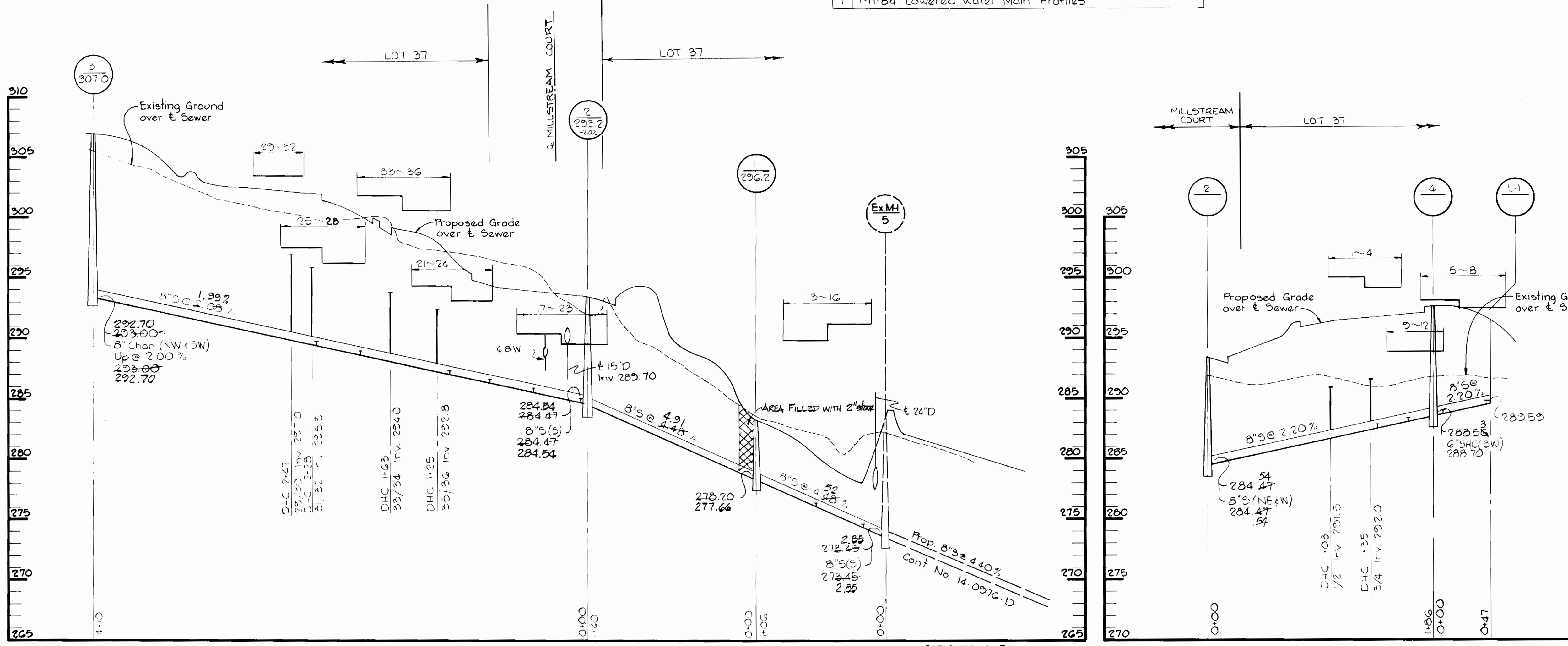
DRAWING NO. 1 OF 2  
 SCALE AS SHOWN  
 37-49G/860  
 37-49G/861.5





SEWER HOUSE CONNECTION - INVERT ELEVATION AT PROPERTY LINE				
STATION	LOT	INVERT		
0+19 L	13	275.5500		
0+19 R	14	275.5500		
0+58 L	15	276.7535		
0+58 R	16	276.7535		
MH 2 TO MH 5				
0+06 R	17	285.2632		
0+06 R	18	285.2632		
0+45 R	19	286.3128712		
0+45 R	20	286.3128712		
0+81 R	21	286.9628749		
0+81 R	22	286.9628749		
1+15 R	23	287.8672		
1+15 R	24	287.8672		
1+25 L	25	294.4847		
1+25 L	26	294.4847		
1+63 L	33	295.46	Low	
1+63 L	34	295.46	High	
1+89 R	25	289.2682		
1+89 R	26	289.2682		
2+24 R	27	289.5549		
2+24 R	28	289.5549		
2+28 L	31	297.2629642		
2+28 L	32	297.2629642		
2+47 L	29	297.6811		
2+47 L	30	297.6811		
MH 2 TO MH 4				
1+03 R	1	292.8461		
1+03 R	2	292.8461		
1+35 R	3	292.8648		
1+35 R	4	292.8648		
1+41 L	11	288.9150		
1+41 L	12	288.9150		
1+66 L	9	288.8121		
1+66 L	10	288.8121		
MH 4 TO L-1				
0+08 R	5	284.852825		
0+08 R	6	284.852825		
0+44 R	7	285.6428270		
0+44 R	8	285.6428270		

No.	Date	Revisions
1	1-11-84	Lowered Water Main Profiles



DEPARTMENT OF PUBLIC WORKS  
 HOWARD COUNTY, MARYLAND  
 Director of Public Works: *Mark F. Nealey* 7-19-83  
 Chief - Bureau of Utilities: *Robert M. Berman* 7-19-83  
 Chief - Bureau of Engineering: *John J. ...* 7-19-83  
 Chief - Land Development: *...* 7-19-83

TRACY, SCHULTE & ASSOCIATES INC.  
 planning · architecture · engineering  
 8450 Baltimore National Pike · Suite 34 · Ellicott City, Maryland 21043

CONTRACT NO. 14-1113-D

WATER AND SEWER MAINS

THOMPSONS PURCHASE  
 SECTION 3, AREA 1  
 1ST ELECTION DISTRICT

DRAWING NO. 2 OF 2  
 SCALE AS SHOWN



*James K. ...*  
 Thompsons Purchase  
 Section 3, Area 1  
 Contract No. 14-1113-D

AS BUILT FEB 84 JUNE 28, 1983