

SEDIMENT CONTROL NOTES

- FOR SEDIMENT CONTROL FOR THIS CONTRACT SEE THE APPROVED ROAD CONSTR. PLANS FOR FILE F-80-96.
- MATERIAL FROM TRENCH EXCAVATION TO BE PLACED ON UPHILL SIDE OF TRENCH.
- CONTRACTOR TO BACKFILL, COMPACT AND STABILIZE IMMEDIATELY AFTER INSTALLATION OF PIPE. NO TRENCHES WILL BE LEFT OPEN AT THE END OF EACH DAY, EXCEPT THAT PORTION WHERE WORK HAS STOPPED.
- ANY SEDIMENT CONTROL FACILITIES ENCOUNTERED DURING PIPE CONSTRUCTION TO BE RETURNED TO ORIGINAL CONDITION IMMEDIATELY UPON COMPLETION OF THAT PORTION OF THE WORK.

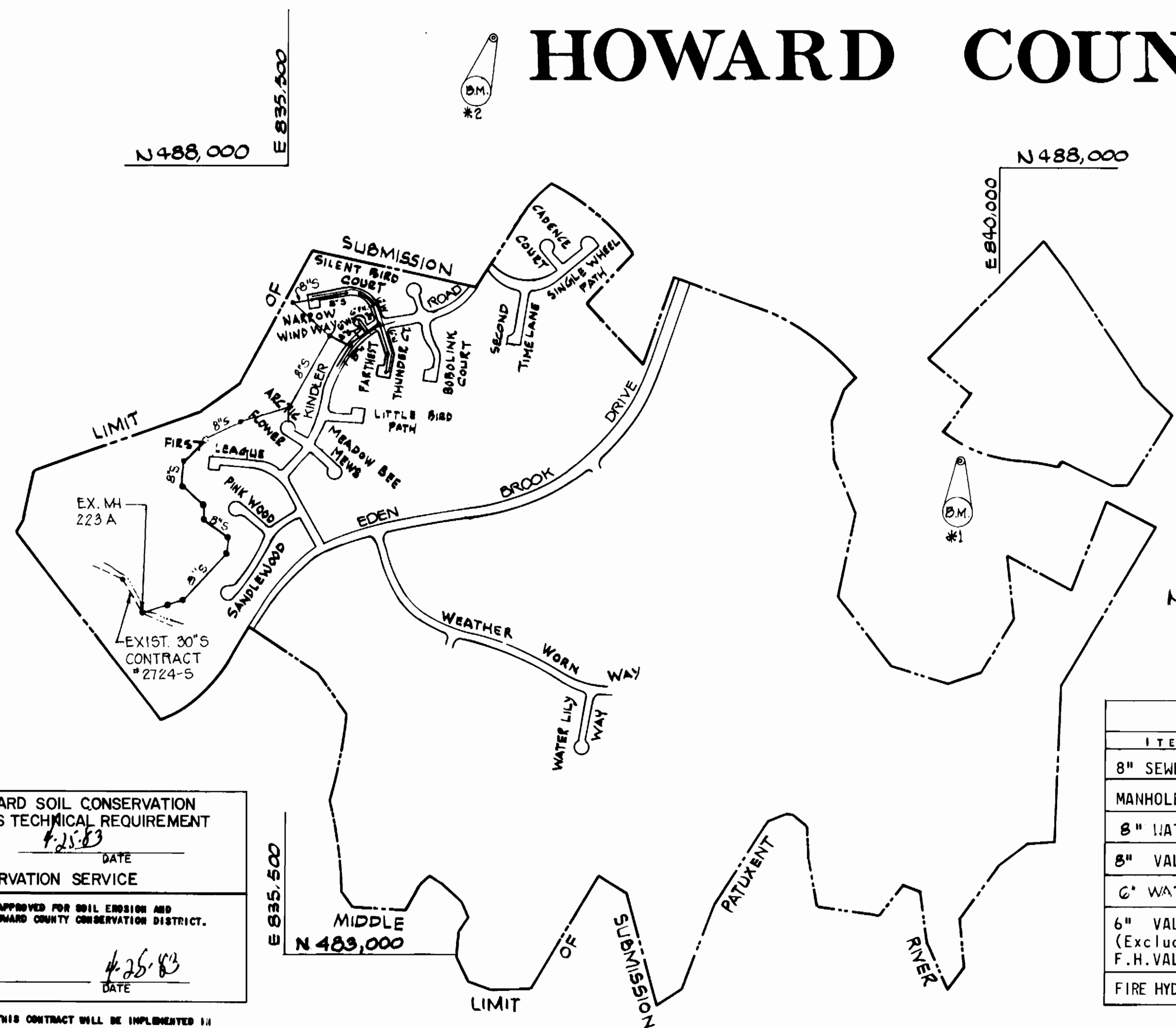
VILLAGE OF KINGS CONTRIVANCE

SECTION 2, AREA 3, PHASE II

LOTS 120 thru 134
218 & 219
233 thru 245
462 thru 478

CONTRACT NO. 34-1112-D

DEPARTMENT OF PUBLIC WORKS
HOWARD COUNTY, MARYLAND



- *1 BENCH MARK
Description: Concrete Monument 10' x 8' of S. Edge Rd. N 486199.369 E 830811.306 Elev. 329.997
- *2 BENCH MARK
Description: R.B. 1.5' W of W. Edge Rd. 7' Below Surface N 488830.177 E 836822.852 Elev. 322.611

NOTE: Contractor to provide 6' Drop House Connections to the following lots: Lot #'s 204 & 205

GENERAL NOTES

- APPROXIMATE LOCATION OF EXISTING MAINS ARE SHOWN. THE CONTRACTOR SHALL TAKE ALL NECESSARY PRECAUTIONS TO PROTECT EXISTING SERVICES AND MAINTAIN UNINTERRUPTED SUPPLY. ANY DAMAGE INCURRED SHALL BE REPAIRED IMMEDIATELY.
- ALL PIPE ELEVATIONS SHOWN ARE INVERT ELEVATIONS.
- ALL WATER MAINS TO BE C.I.P., OR D.I.P. UNLESS OTHERWISE NOTED.
- THE CONTRACTOR SHALL LOCATE EXISTING UTILITIES A MINIMUM OF TWO WEEKS IN ADVANCE OF CONSTRUCTION OPERATIONS IN VICINITY OF UTILITIES.
- ALL WATER HOUSE CONNECTIONS SHALL BE FOR INSIDE METER SETTING.
- FOR ALL STANDARD DETAILS, SEE STANDARDS BOUND IN SPECIFICATIONS.
- THE CONTRACTOR SHALL PROVIDE A JOINT IN ALL SEWER MAINS WITHIN 2'-0" OF EXTERIOR MANHOLE WALLS.
- SOIL AROUND FIRE HYDRANTS TO BE COMPACTED IN ACCORDANCE WITH SECTION 5-15 OF THE STANDARD SPECIFICATIONS.
- ALL HORIZONTAL AND VERTICAL CONTROLS ARE BASED ON MARYLAND STATE DATUM.
- PLACE REGULATION "MEN WORKING" AND WARNING SIGN AS REQUIRED TO COMPLY WITH MARYLAND STATE HIGHWAY ADMINISTRATION MANUAL OF TRAFFIC CONTROL FOR HIGHWAY CONSTRUCTION AND MAINTENANCE OPERATIONS.
- ALL WATER MAINS TO HAVE A MINIMUM OF 3 1/2" COVER UNLESS OTHERWISE NOTED.
- TREES ARE TO BE PROTECTED FROM DAMAGE TO MAXIMUM EXTENT. TREES LOCATED WITHIN THE CONSTRUCTION STRIP ARE NOT TO BE REMOVED OR DAMAGED BY THE CONTRACTOR.
- CLEAR ALL UTILITIES BY A MINIMUM OF 12-INCHES.
- ALL FIRE HYDRANTS SHALL BE STRAPPED TO TEES AND SHALL BE BUTTRESSED WITH CONCRETE IN ACCORDANCE WITH STANDARD DETAILS.
- CONTRACTOR SHALL REMOVE TREES, STUMPS, AND ROOTS ALONG LINE OF EXCAVATION AS DIRECTED BY THE ENGINEER.
- ALL SEWERS SHALL BE V.C.P.X., C.S.P.X., A.C.P. OR P.V.C. CLASS 2000 UNLESS OTHERWISE NOTED. (SEE NOTE 23)
- ALL MANHOLES SHALL BE 4'-0" INSIDE DIAMETER UNLESS OTHERWISE NOTED.
- PROFILE STATIONS SHALL BE ADJUSTED AS NECESSARY TO CONFORM TO PLAN DIMENSIONS.
- BLOCK ALL FITTINGS WITH CONCRETE. SEE STANDARDS BOUND IN SPECIFICATIONS.
- BURY LINE ELEVATIONS ON FIRE HYDRANTS SHALL BE SET TO THE ELEVATIONS SHOWN ON DRAWINGS.
- CONTRACTOR SHOULD NOTIFY THE FOLLOWING UTILITIES OR AGENCIES AT LEAST FIVE (5) DAYS BEFORE STARTING WORK SHOWN ON THESE PLANS:
 - CHESAPEAKE AND POTOMAC TELEPHONE CO. 725-9976
 - BALTIMORE GAS AND ELECTRIC CO.
 - UNDERGROUND ELECTRIC DISTRIBUTION ENGR.
 - DAMAGE CONTROL 234-5691
 - UNDERGROUND GAS DISTRIBUTION ENGR. 559-0100
 - BELL TELEPHONE SYSTEM 393-3649
 - LONG DISTANCE CABLE DIVISION 393-3553
 - BUREAU OF UTILITIES 992-2366
- For all copper W.H.C. utilize flared type fitting.
- ALL THE TWIN WATER HOUSE CONNECTIONS SHALL BE 1-INCH SIZE, SINGLE WATER HOUSE CONNECTIONS SHALL BE 3/4" COPPER PIPE.
- W.H.C. TO PASS 1" OVER SEWER LINES CROSSED, SHC TO PASS 1" UNDER WATER MAINS CROSSED.

QUANTITIES				
ITEM	UNIT	ESTIMATED	AS-BUILT	MATERIAL/SUPPLIER
8" SEWER	L.F.	4,668	3094 1598 2064	CLAY - LOANWELL PIPE PVC - J.M. MANUFACT. CO. D.I.P. - GRIFPIN PIPE
MANHOLE	EACH	27	27	B4C UTILITY SUPPLY ATLANTIC PRECAST CONCR. CO.
8" WATER	L.F.	620	619	D.I.P. - GRIFPIN PIPE
8" VALVE	EACH	2	2	M&H
6" WATER	L.F.	1,005	1016	D.I.P. - GRIFPIN PIPE
6" VALVE (Excluding F.H. VALVES)	EACH	3	3	M&H
FIRE HYDRANT	EACH	3	3	DRESSER - FLOW INDUST.

REVIEWED FOR HOWARD SOIL CONSERVATION DISTRICT AND MEETS TECHNICAL REQUIREMENT
 SIGNATURE: *[Signature]* DATE: 4-25-83
 U.S. SOIL CONSERVATION SERVICE

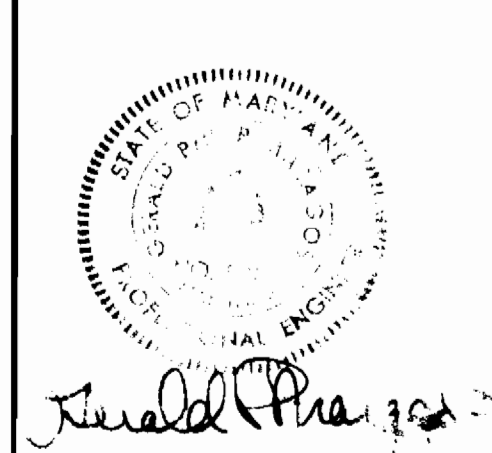
THIS DEVELOPMENT PLAN IS APPROVED FOR SOIL EROSION AND SEDIMENT CONTROL BY THE HOWARD COUNTY CONSERVATION DISTRICT.
 APPROVED: *[Signature]* DATE: 4-25-83
 HOWARD S.C.D.

TYPE OF BUILDING: SINGLE FAMILY
 NUMBER OF LOTS: 46
 NUMBER OF WATERHOUSE CONN.: 46
 NUMBER OF SEWERHOUSE CONN.: 60
 DRAINAGE AREA: MIDDLE PATUXENT RIVER

Water & Sewer Code
 Sewer Code 6440000
 Water Code E 16

PLAN SCALE: 1"=600'

15. IF ACP PIPE IS USED, CLASS 3000 A.C.P. IS TO BE UTILIZED WHERE SEWER DEPTH EXCEEDS 12 FEET.



DEPARTMENT OF PUBLIC WORKS
 HOWARD COUNTY, MARYLAND
 Robert M. ... 4-27-83
 CHIEF-BUREAU OF UTILITIES DATE CHIEF LAND DEVELOPMENT DIVISION DATE

CENTURY ENGINEERING, INC.
 CONSULTING ENGINEERS - PLANNERS
 TOWSON, MARYLAND 21204

DEPARTMENT OF PUBLIC WORKS
 HOWARD COUNTY, MARYLAND
 ... 4-28-83
 DIRECTOR OF PUBLIC WORKS DATE CHIEF - BUREAU OF ENGINEERING DATE

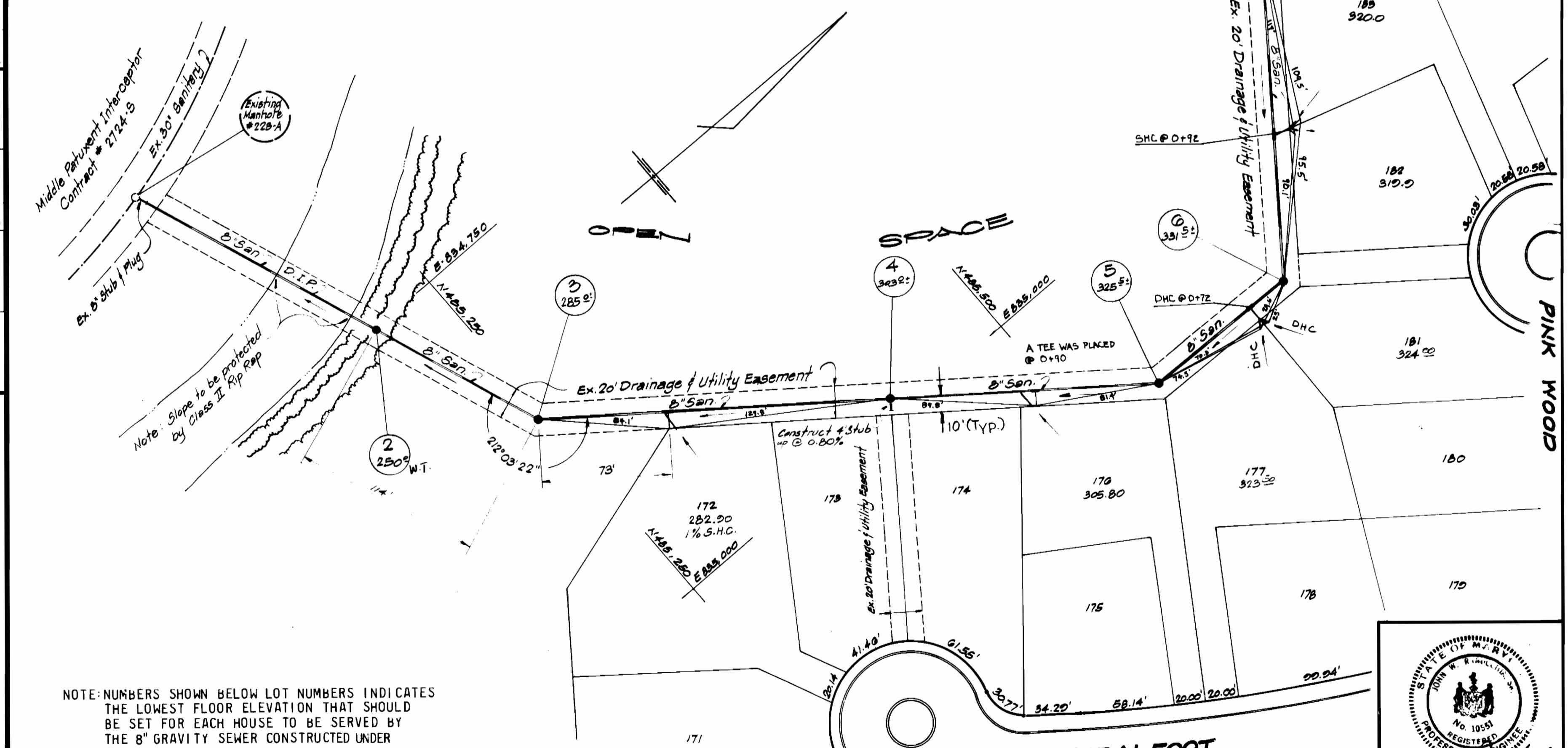
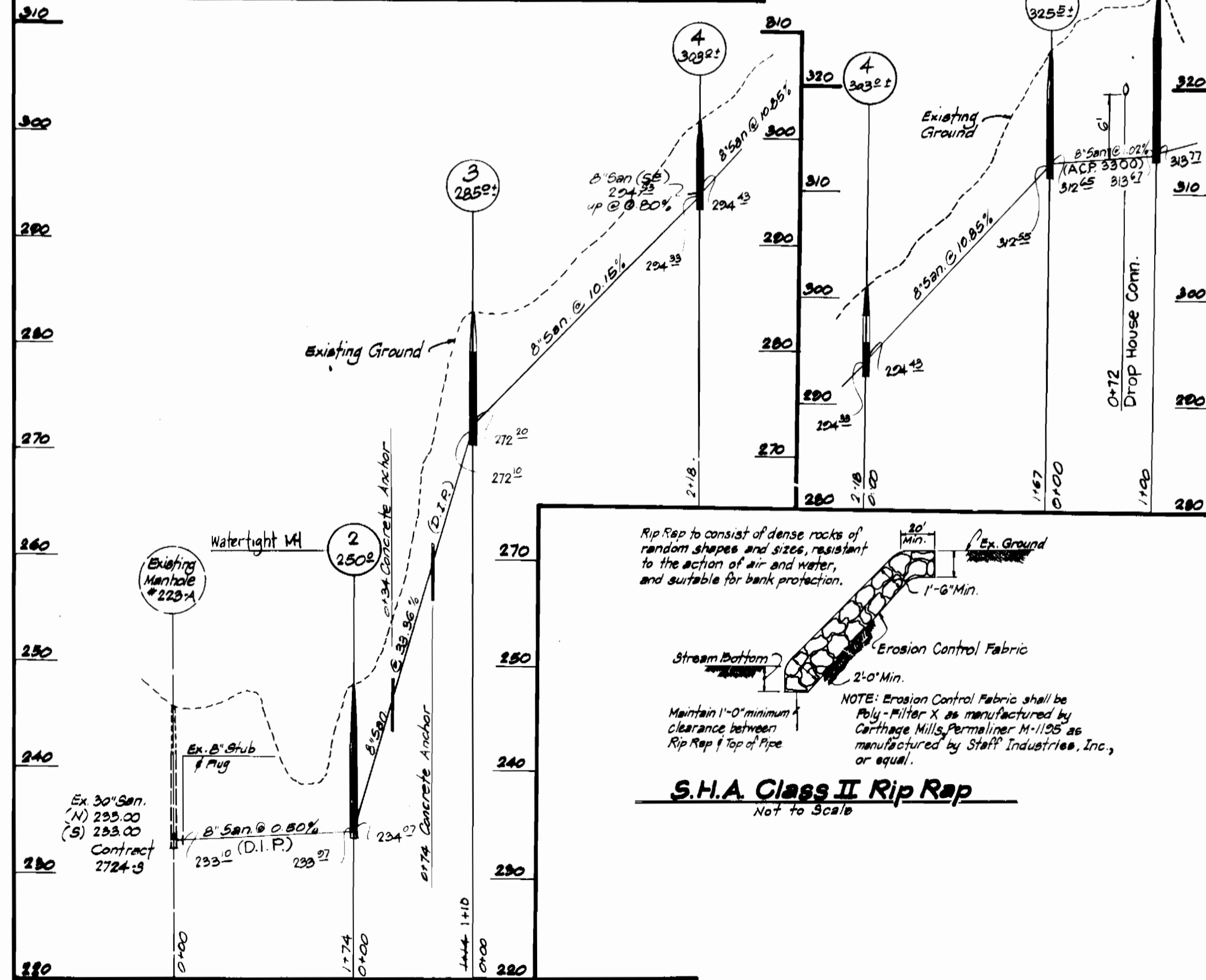
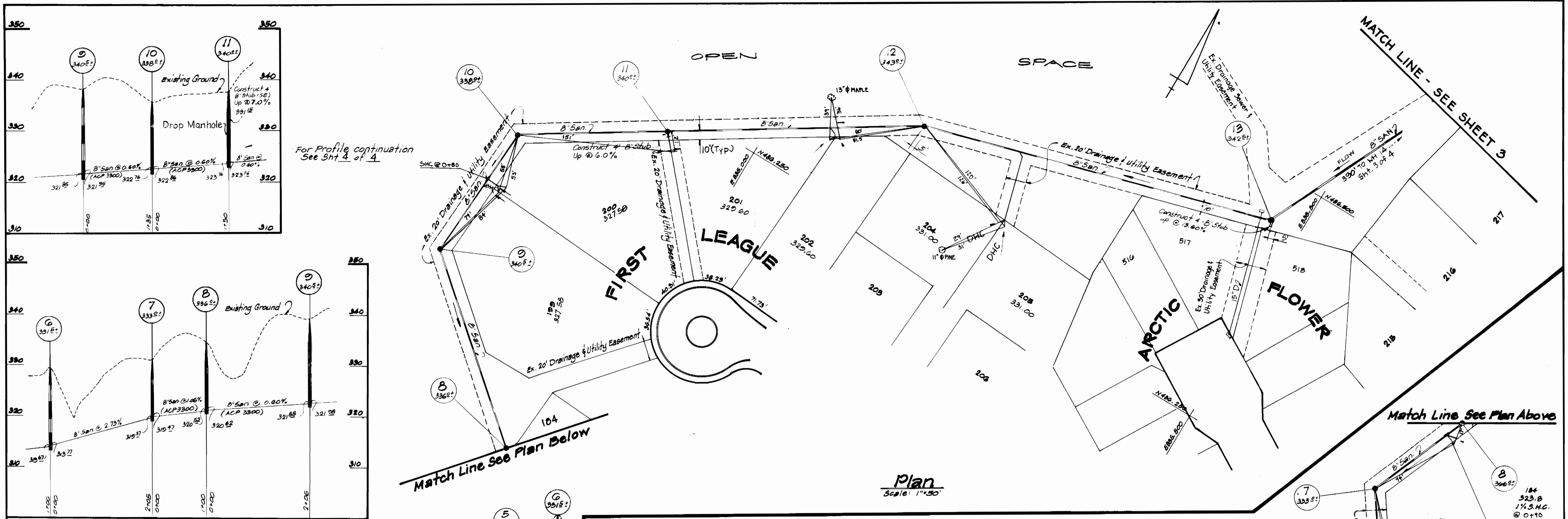
CONTRACT NO. 34-1112-D

TITLE SHEET

VILLAGE OF KING'S CONTRIVANCE
 SECTION 2, AREA 3, PHASE II
 6th ELECTION DISTRICT, HOWARD COUNTY, MARYLAND

DRAWING NO. 1 OF 4
 SCALE

AS-BUILT JULY 12, 1983



DEPARTMENT OF PUBLIC WORKS
HOWARD COUNTY, MARYLAND

Director of Public Works Date
Chief, Bureau of Engineering Date
Chief, Bureau of Utilities Date
Chief, Land Development Division Date

6-22-83 Relocated San MH13 and Sewer Easement
Revision Description

CENTURY ENGINEERING, INC.
CONSULTING ENGINEERS - PLANNERS
TOWSON, MARYLAND 21204

CONTRACT NO. 34-1112-D

PLAN OF
PLAN & PROFILE OF SEWER MAIN

VILLAGE OF KING'S CONTRIVANCE
Section 2, Area 3, Phase II
Lots 120 thru 124, 210 thru 214, 220 thru 224, 402 thru 476
6th Election District
Howard County, Maryland

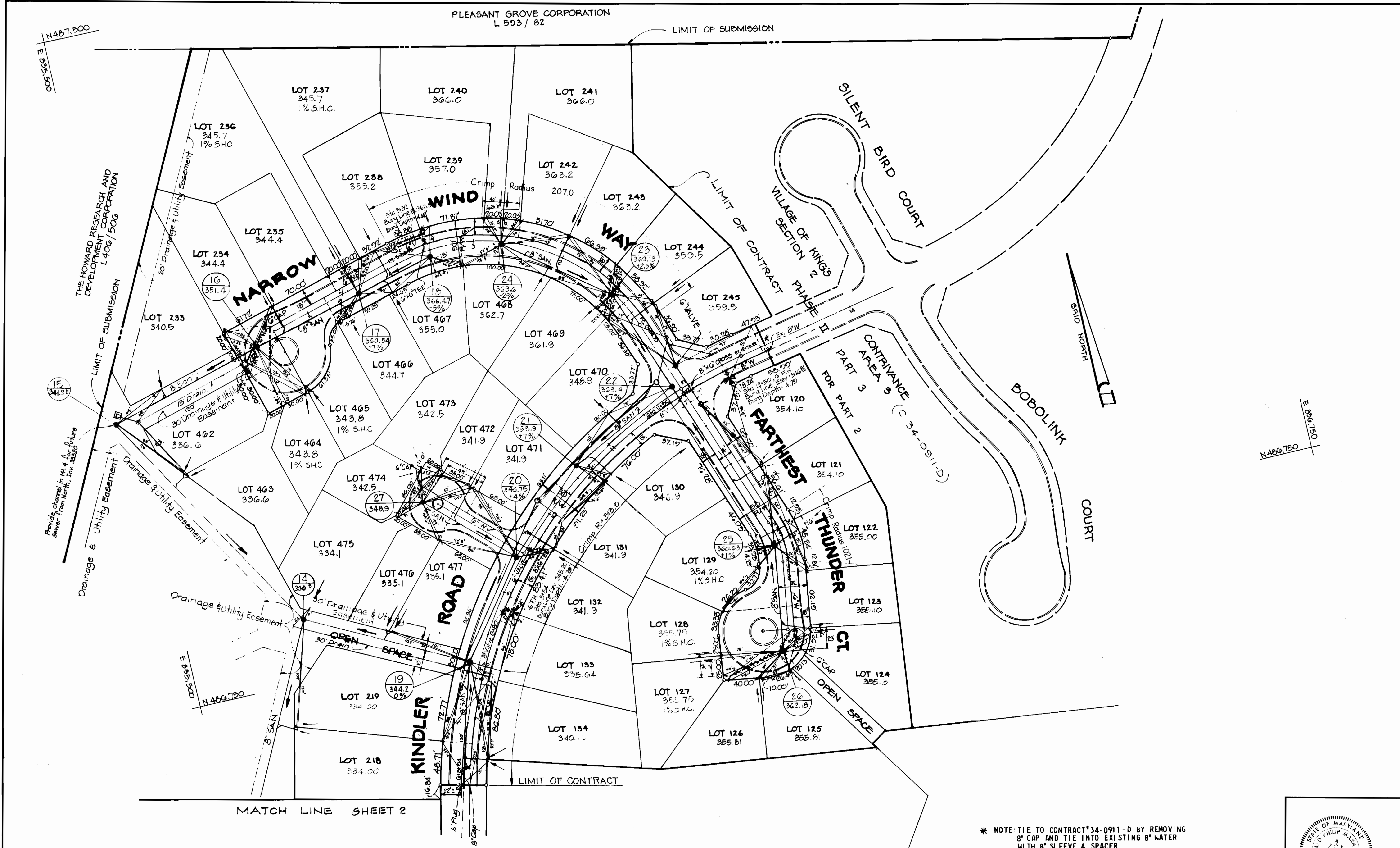
DRAWING NO. 2 OF 4
SCALE As Shown

J.W. Ranocchia 10551

AS-BUILT JULY 11, 1983

PLEASANT GROVE CORPORATION
L 593 / 82

LIMIT OF SUBMISSION



THE HOWARD RESEARCH AND DEVELOPMENT CORPORATION
L 406 / 506

Provides channel in M-4 for future sewer from North, Inc. 33320

* NOTE: TIE TO CONTRACT #34-0911-D BY REMOVING 8" CAP AND TIE INTO EXISTING 8" WATER WITH 8" SLEEVE & SPACER.



DEPARTMENT OF PUBLIC WORKS
HOWARD COUNTY, MARYLAND
Robert M. Bennett 4-27-83
CHIEF BUREAU OF UTILITIES DATE CHIEF - LAND DEVELOPMENT DIVISION DATE

CENTURY ENGINEERING, INC.
CONSULTING ENGINEERS - PLANNERS
TOWSON, MARYLAND 21204

DEPARTMENT OF PUBLIC WORKS
HOWARD COUNTY, MARYLAND
John F. Nalley 4-28-83
DIRECTOR OF PUBLIC WORKS DATE CHIEF - BUREAU OF ENGINEERING DATE

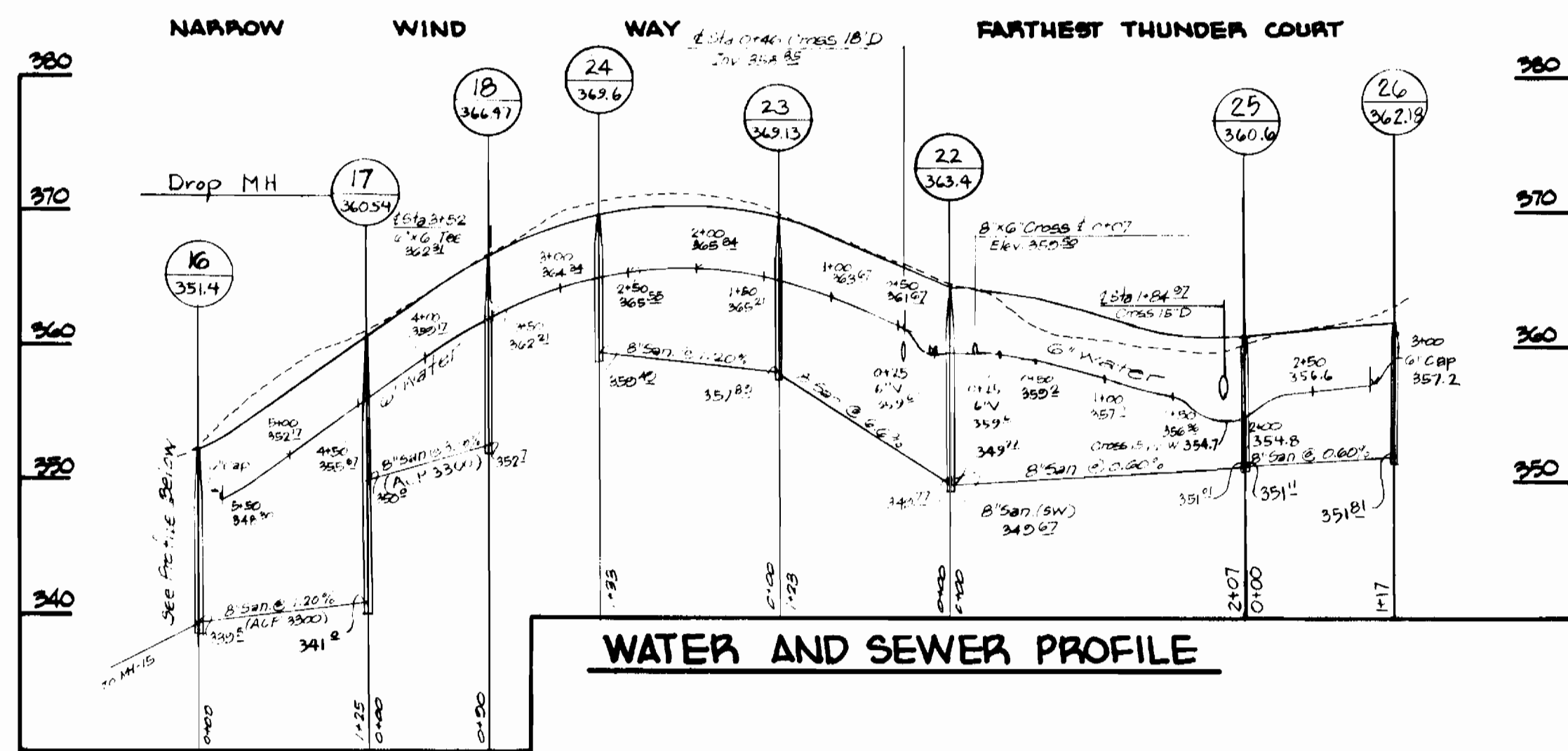
CONTRACT NO. 34-1112-D

PLAN OF
WATER & SEWER MAINS

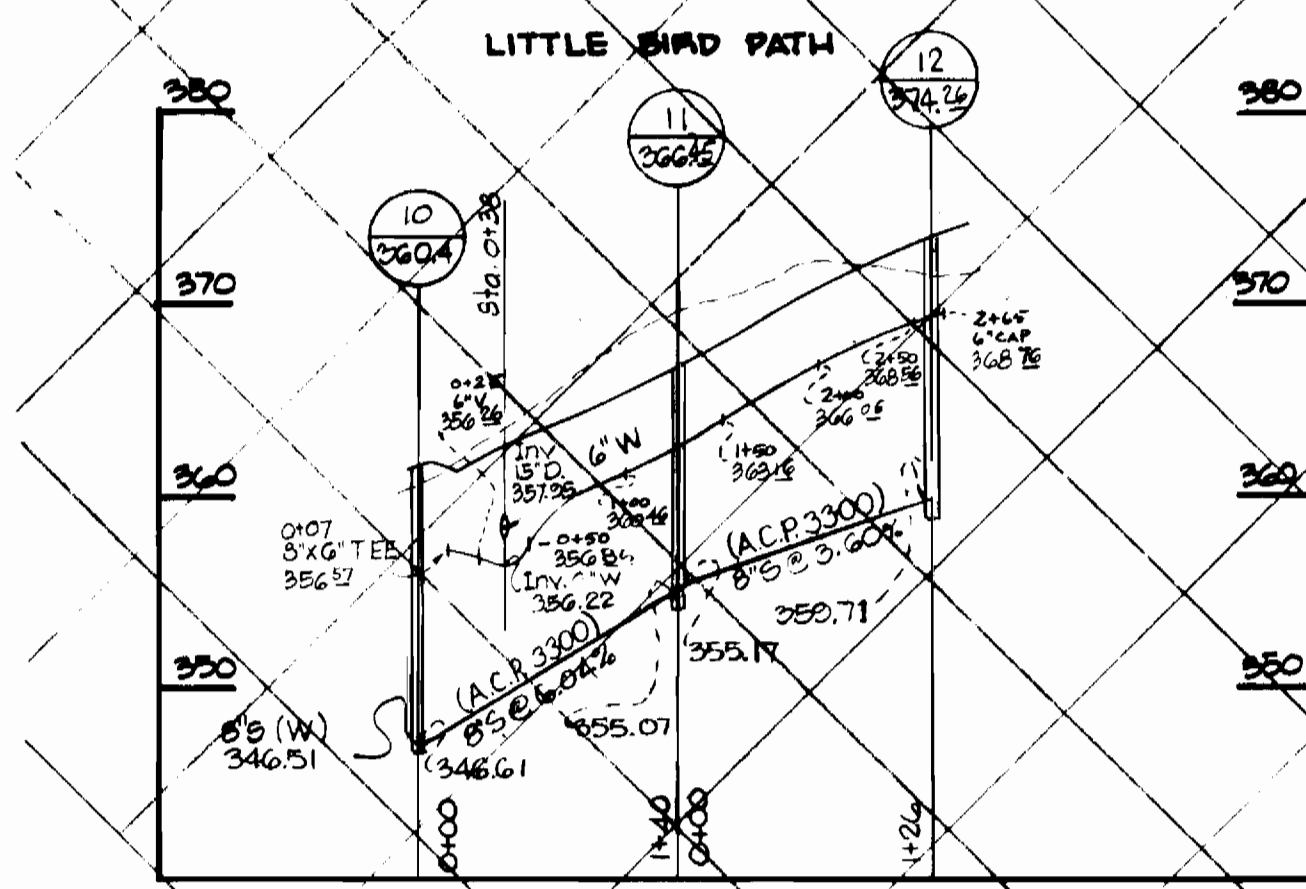
REV. NO.	REV. DATE	REVISION DESCRIPTION
6-22-83		REV. 20" DRAINAGE & UTILITY EASEMENT REV. 8" @ M.H. 19
<p>VILLAGE OF KING'S CONTRIVANCE SECTION 2, AREA 3, PHASE II 6TH ELECTION DISTRICT, HOWARD COUNTY, MARYLAND</p>		

DRAWING NO. 3 OF 4	SCALE 1" = 50'
--------------------	----------------

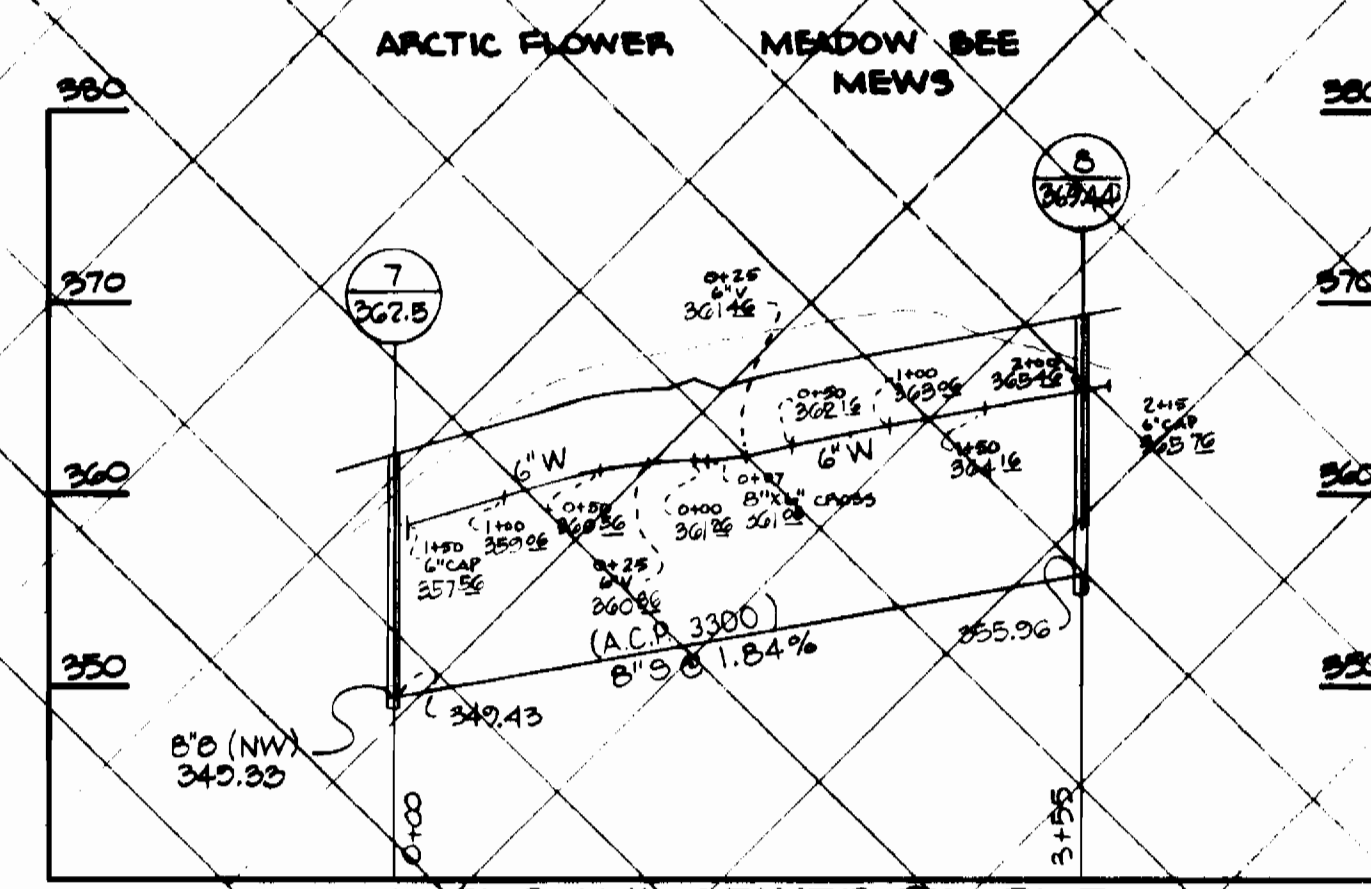
AS-BUILT JULY 12, 1983



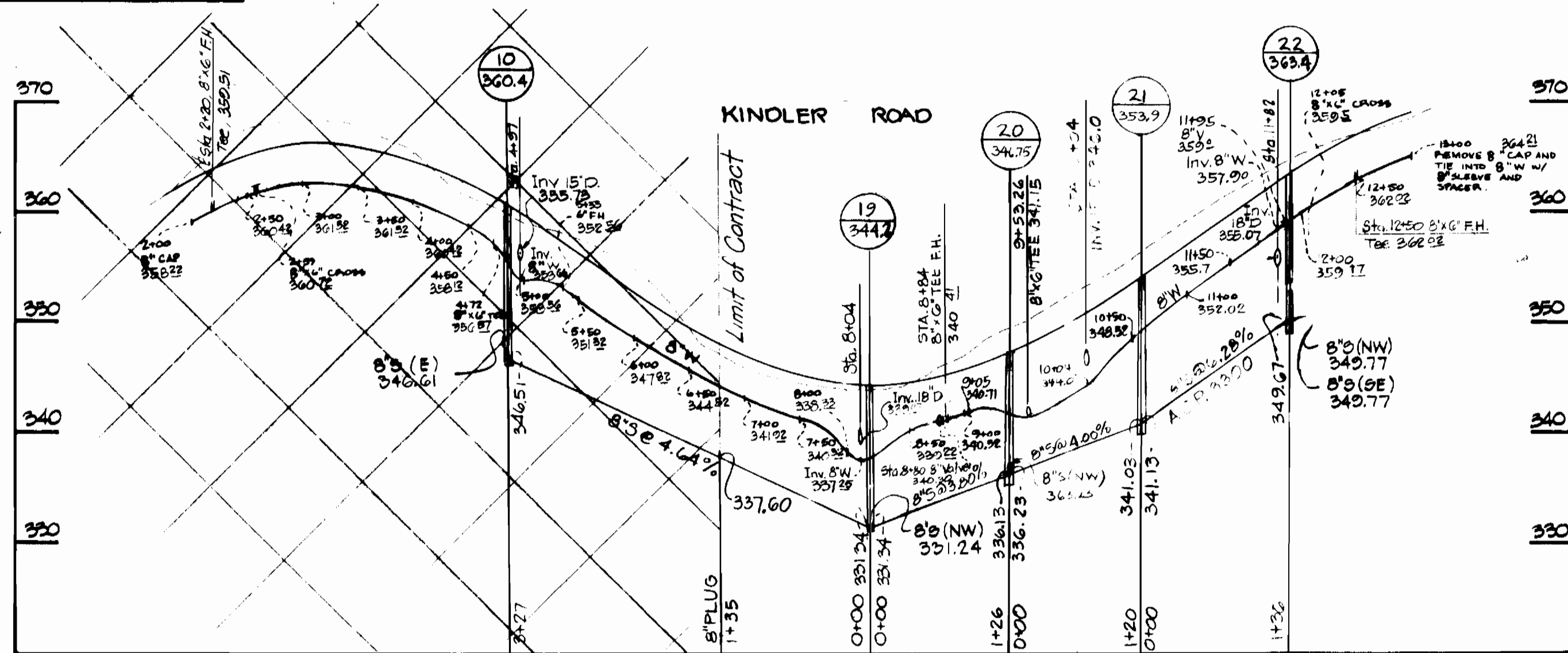
WATER AND SEWER PROFILE



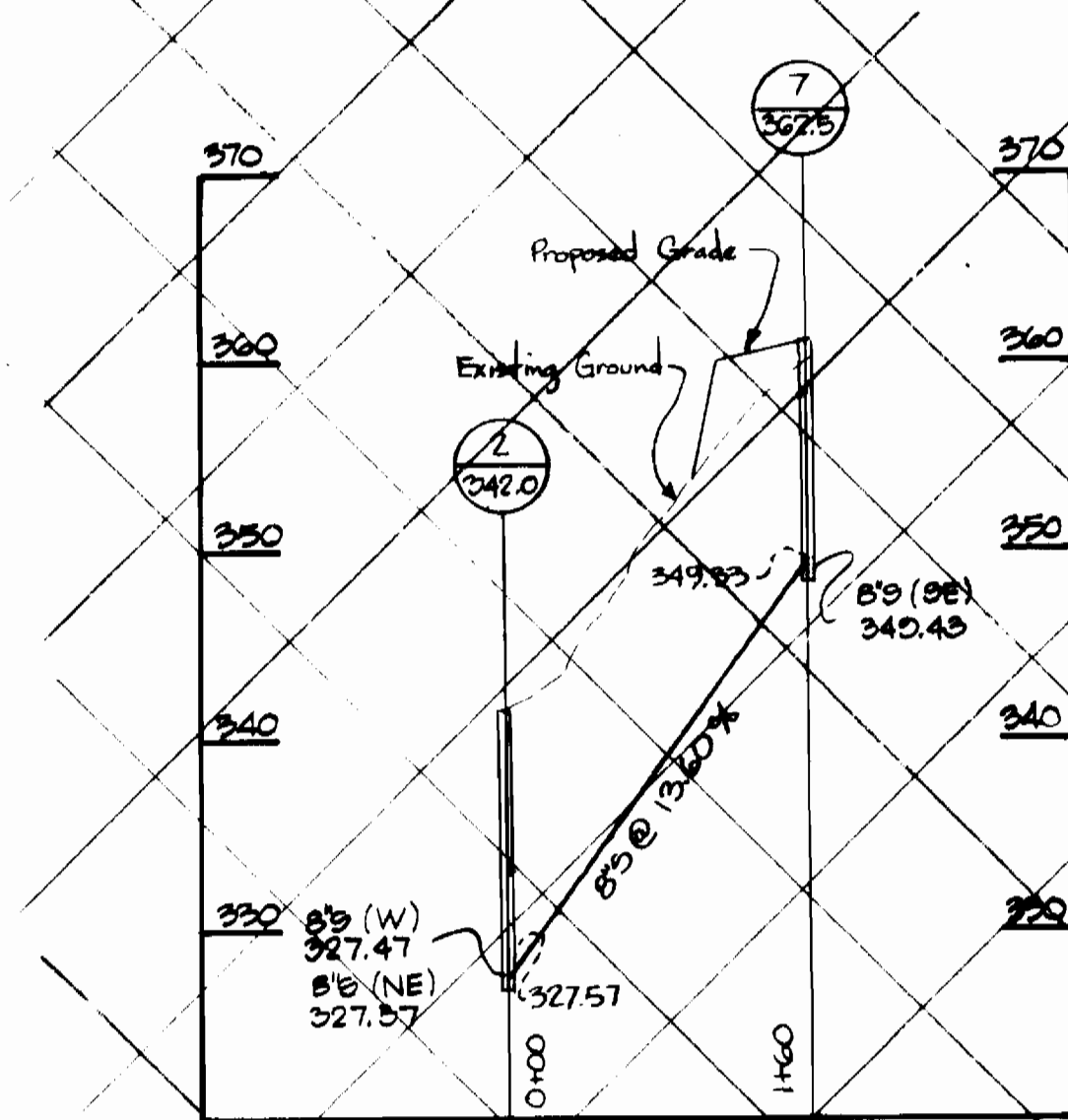
WATER AND SEWER PROFILE



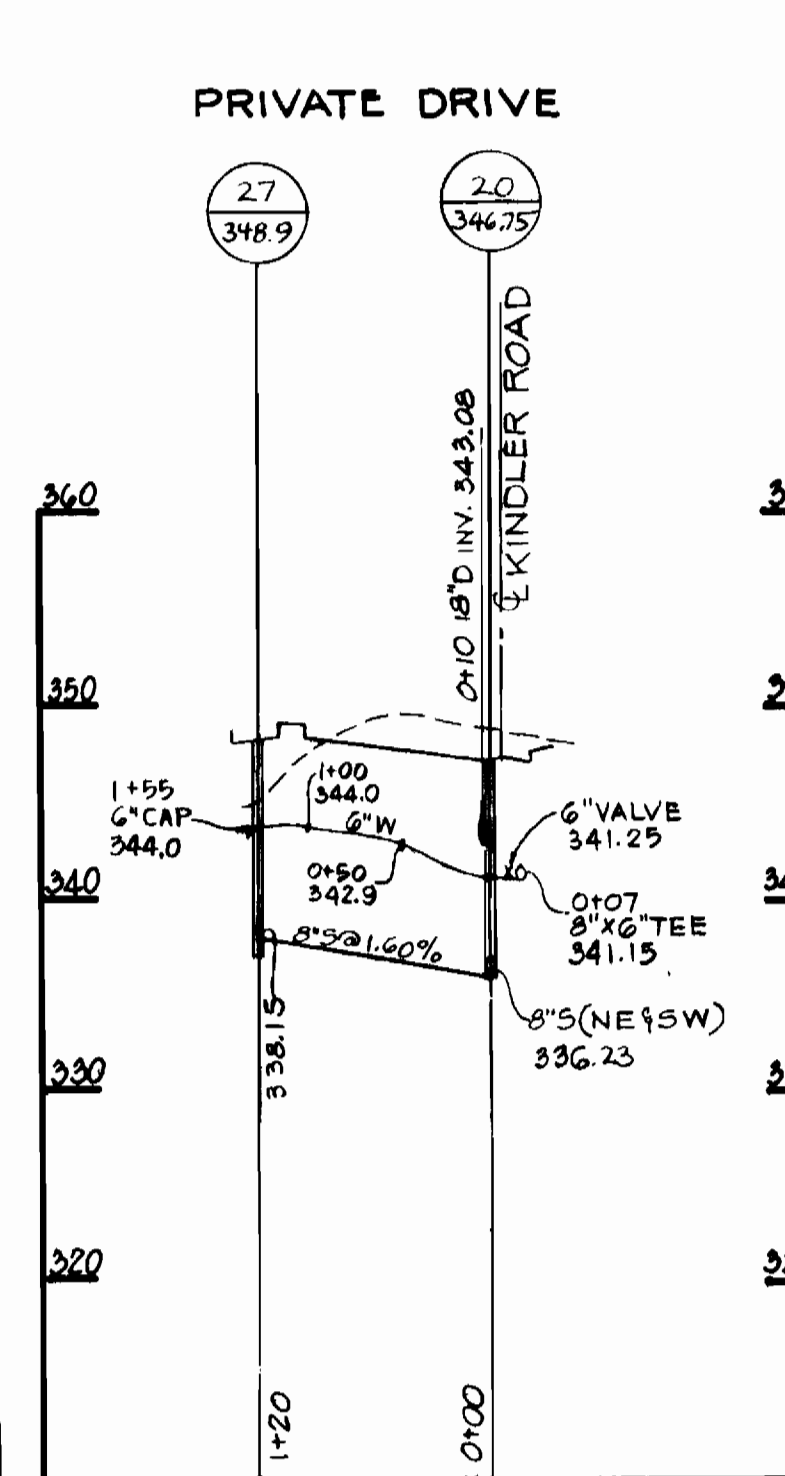
WATER AND SEWER PROFILE



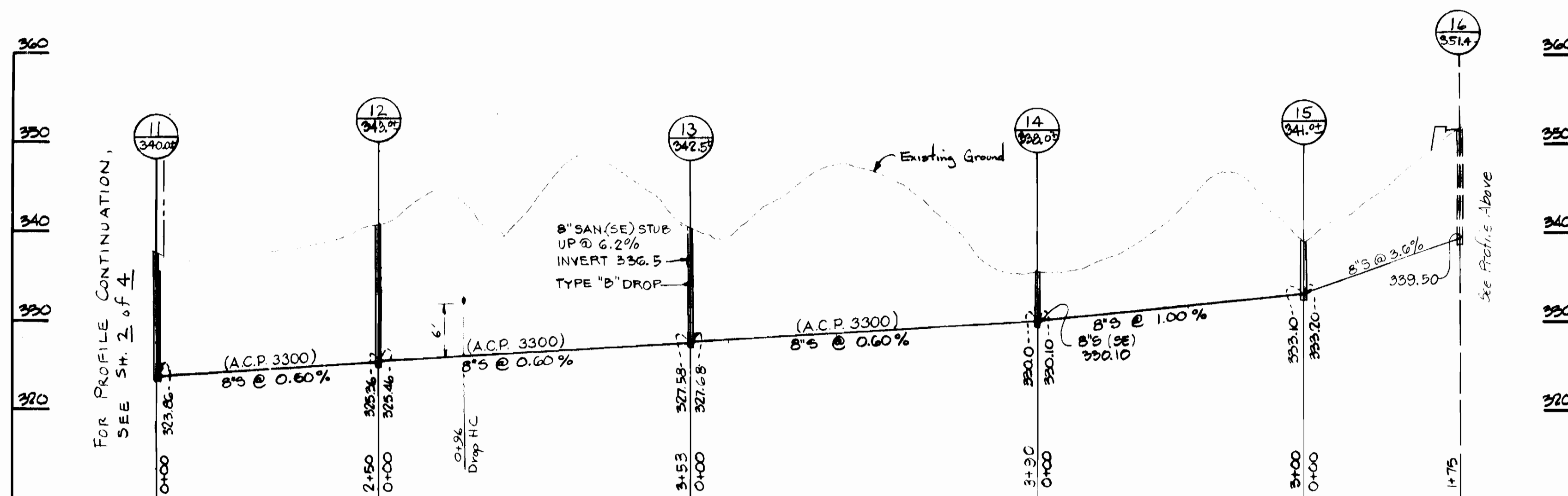
WATER AND SEWER PROFILE



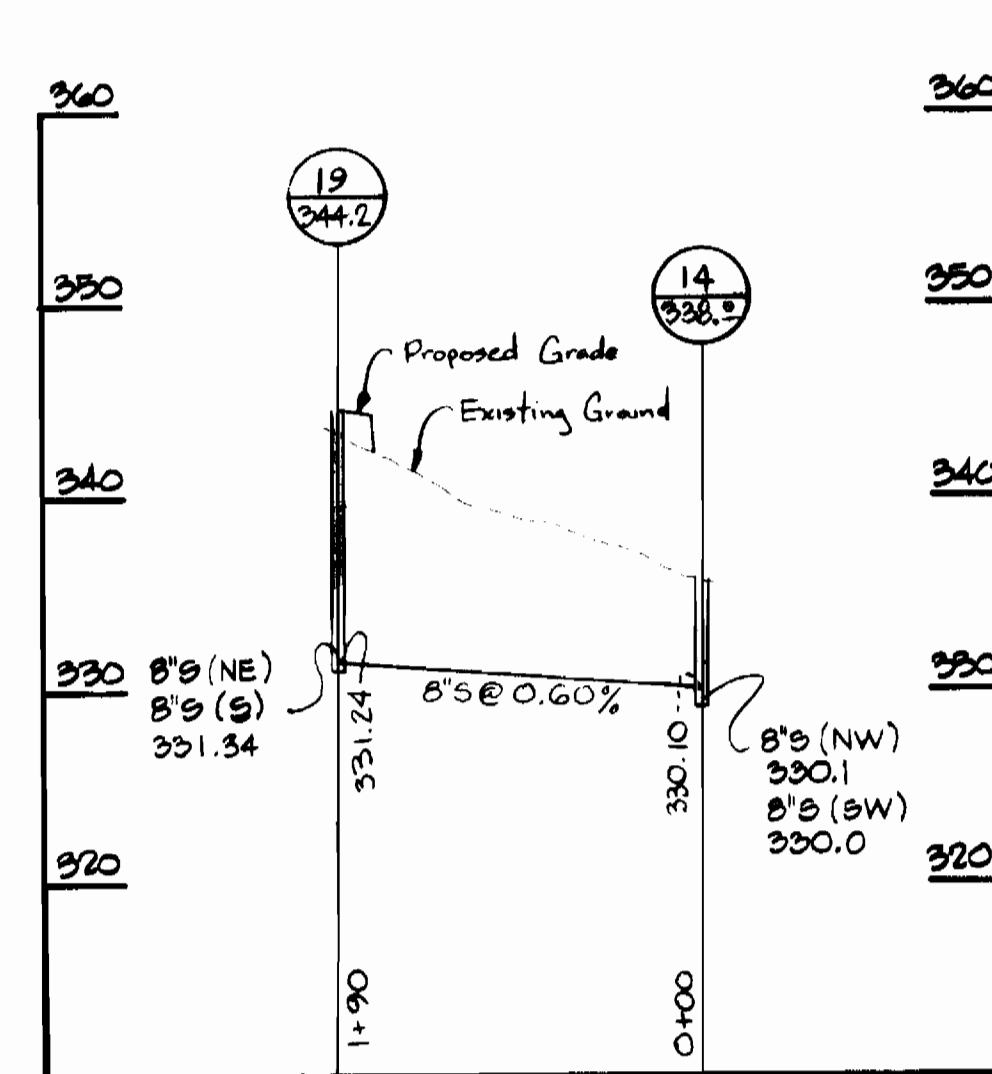
SEWER PROFILE



SEWER PROFILE



SEWER PROFILE



SEWER PROFILE

DEPARTMENT OF PUBLIC WORKS
HOWARD COUNTY, MARYLAND
Robert M. Brown 4-27-83
CHIEF-BUREAU OF UTILITIES DATE CHIEF-LAND DEVELOPMENT DIVISION DATE

CENTURY ENGINEERING, INC.
CONSULTING ENGINEERS-PLANNERS
TOWSON, MARYLAND 21204

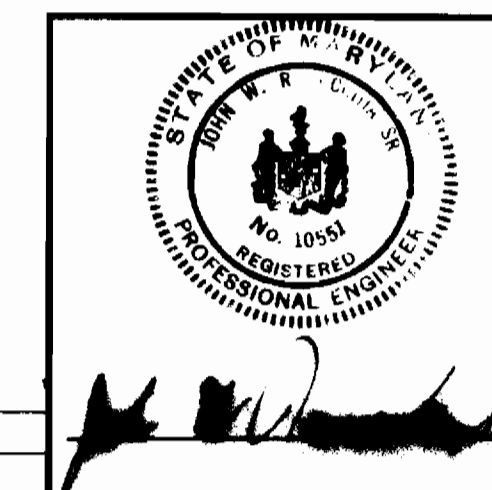
DEPARTMENT OF PUBLIC WORKS
HOWARD COUNTY, MARYLAND
F. N. ... 4-28-83
DIRECTOR PUBLIC WORKS DATE CHIEF-BUREAU OF ENGINEERING DATE

CONTRACT NO. 34-1112-D

PROFILES OF
WATER & SEWER MAINS

REV. NO. 0-22-83
REV DATE 0-22-83
REVISION DESCRIPTION RELOCATED MH 12 ON SEWER PROFILE
VILLAGE OF KING'S CONTRIVANCE
SECTION 2, AREA 3, PHASE II
Gth ELECTION DISTRICT, HOWARD COUNTY, MARYLAND

DRAWING NO. 4 OF 4
SCALE HOR: 1"=100' VERT: 1"=10'



AS-BUILT JULY 12, 1983