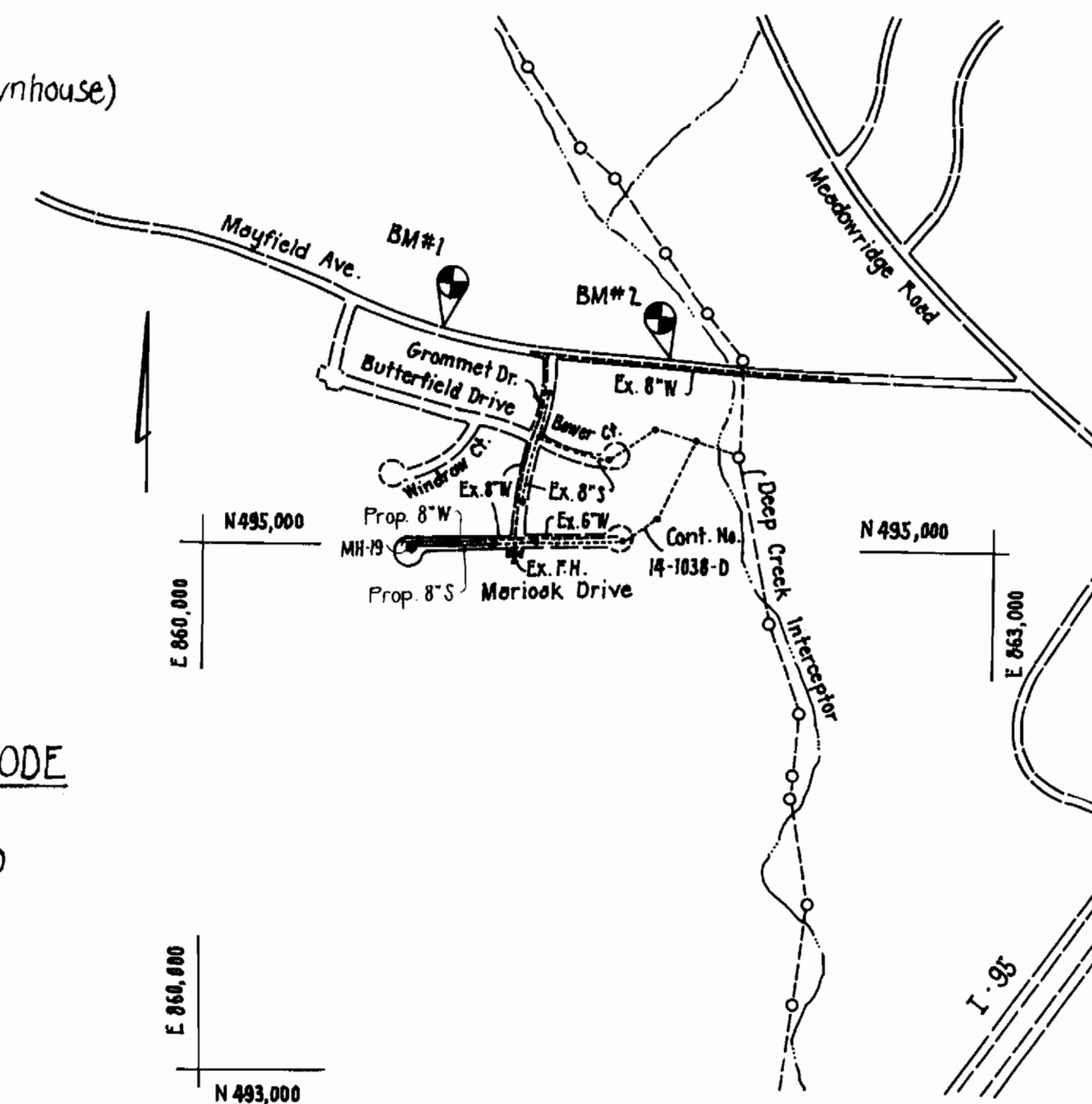
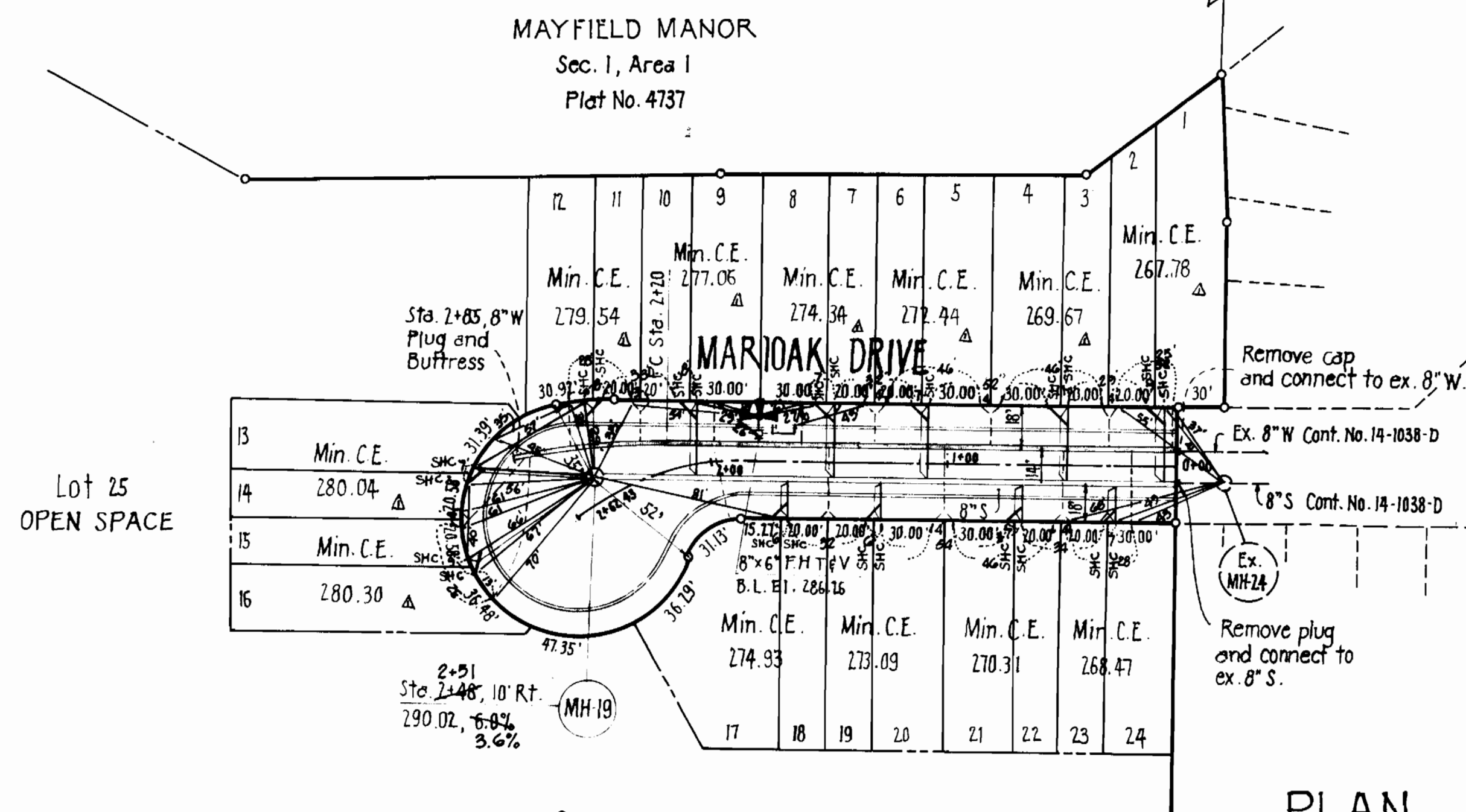


QUANTITIES			
ITEM	ESTIMATED	AS BUILT	SUPPLIER
8" W (L.F.)	289	282 LF	Amstead Griffin
1" DWHC (L.F.)	200	171 LF	
3/4" WHC (L.F.)	200	256	
8" S (L.F.)	250	249	PVC Certain-teed
6" SHC (L.F.)	300	2576	PVC Certain-teed
MANHOLE (L.F.)	16 V.F.	16 V.F.	Atlantic Pre-Cast
T.H.	1	1	American Parlinz

Number of Lots... 24  
 Type of Bldg... Residential (Townhouse)  
 Number of WHC... 24  
 Number of SHC... 24  
 Drainage Area... Patapsco



**WATER & SEWER CODE**  
 Water No: D06  
 Sewer No: L560000



**PLAN**  
 Scale: 1" = 50'

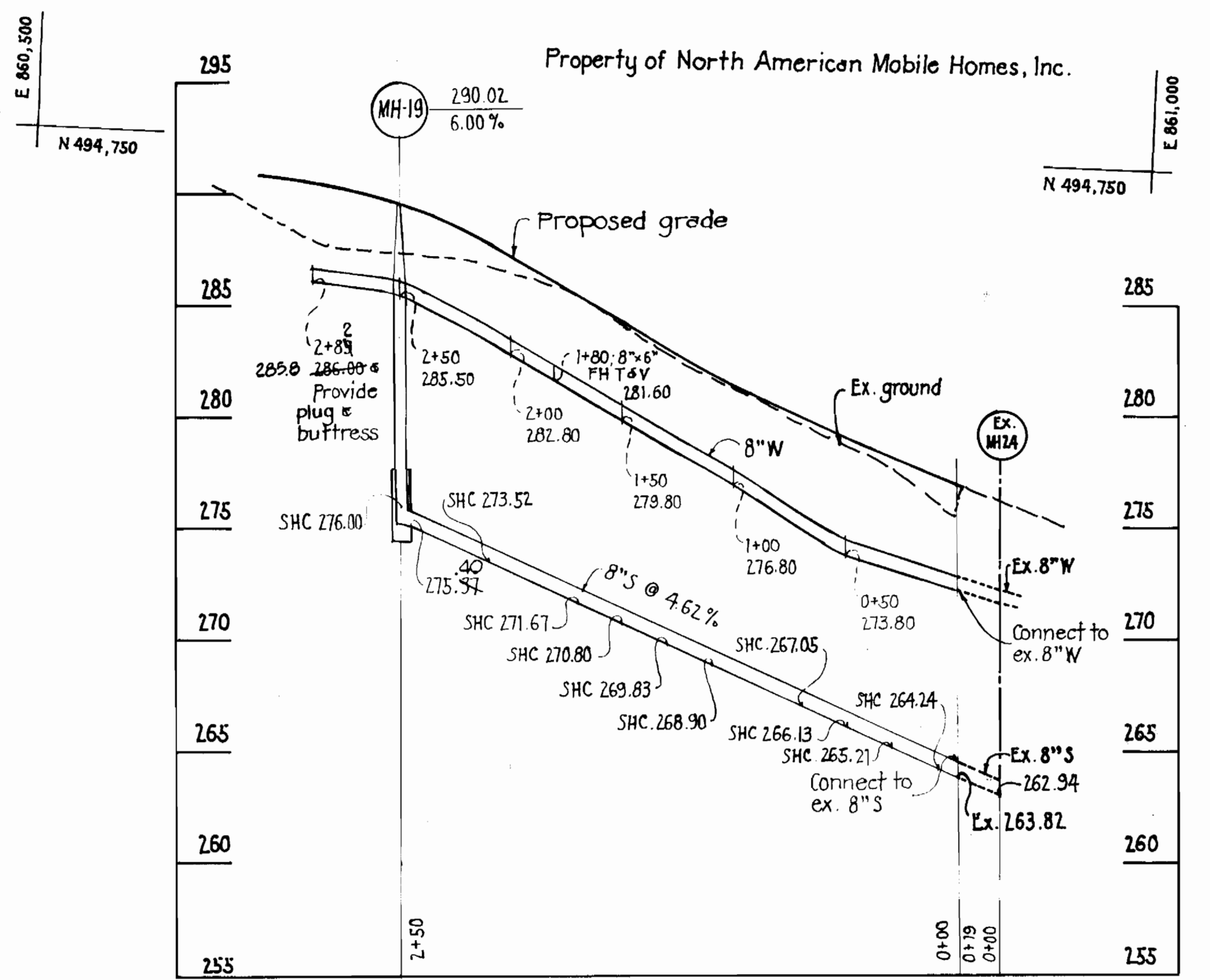
**BENCH MARKS**

BM# 1, RR Spike in 6" E Pole No. 147131 Left of E Mayfield Ave. @ Sta. 12+61; 290.09  
 BM# 2, RR Spike in 30" Tree Left of E Mayfield Ave. @ Sta. 22+65; 246.25

LOT No.	INVERT ELEV. @ PROPERTY LINE	LOT No.	INVERT ELEV. @ PROPERTY LINE
94 & 95	277.06	106 & 107	276.84
96 & 97	277.30	108 & 109	274.16
98 & 99	272.08	110 & 111	271.44
100 & 101	270.19	112 & 113	268.54
102 & 103	267.41	114 & 115	264.72
104 & 105	264.87	116 & 117	264.88
1 & 2	264.8452	13 & 14	277.064
3 & 4	266.75	15 & 16	277.3085
5 & 6	269.5278	17 & 18	272.08
7 & 8	271.4285	19 & 20	270.19
9 & 10	274.4455	21 & 22	267.415
11 & 12	276.6250	23 & 24	265.578

**GENERAL NOTES**

- The approximate locations of existing utilities are shown. The Contractor shall take all necessary precautions to protect existing utilities and to maintain uninterrupted service. Any damage incurred due to Contractor's operation shall be repaired immediately at Contractor's expense.
- All horizontal controls are based on Maryland State Coordinates.
- All vertical controls are based on U.S.G.S. datum.
- All pipe elevations shown are invert elevations.
- All utilities shall be cleared by a min. of 6". All utility poles shall be cleared by a min. of 2'-0" or tunneled if required. Cost for tunneling or bracing poles shall be included in the unit prices bid for excavation and backfill for water mains.
- For all standard details see standard bound in the specifications.
- The Contractor shall locate existing utilities in advance of construction operations in the vicinity of proposed utilities.
- The Contractor shall notify the following utilities or agencies at least five (5) days before starting work shown on these drawings:  
 Bal. Gas Electric - Underground Electric Distribution Engineering - 234-5891.  
 Miss Utility - 533-0100.  
 Bal. Gas Electric - Underground Gas Distribution Engineering - 234-5333.  
 Chesapeake Potomac Telephone Co. - 725-9976. ; Bu. of Utilities - 992-2366.
- Trees shall be protected from damage to a max. extent. Trees located within construction strips shall not be removed or damaged by the Contractor.
- The Contractor shall remove tree stumps and roots along the line of excavation as directed by the Engineer. Cost for such removal shall be included in the unit prices bid for excavation and backfill for water mains and sewer mains.
- The Contractor shall place regulation "Men Working" and warning signs as required to comply with MSHA Manual of Traffic Control for Highway Construction and Maintenance Operations.
- All water mains shall be C.I.P. or D.A.P. unless otherwise noted.
- The top of all water mains shall have a min. of 3'-6" cover unless otherwise noted.
- All valves shall be strapped to the tees in accordance with standard details.
- All water main fittings shall be buttressed or anchored with concrete in accordance with standard details.
- All fire hydrants shall be strapped to the tees and shall be buttressed with concrete in accordance with the standard details. The cost of strapping fire hydrants and valve shall be included in the unit price bid for furnishing and installing fire hydrants and soil shall be compacted in accordance with Sec 3701-3.15 of the standard specifications. Fire Hydrant bury line elevation shall be set to the elevation shown on the drawing.
- All water house connections shall be for inside meter settings.
- All sewer mains shall be C.S.F.X., V.C.F.X., PVC or ACP C1-2400 unless otherwise noted.
- The Contractor shall provide a joint in all sewer mains within 2'-0" of the exterior manhole walls.
- All manholes shall be 4'-0" inside diameter unless otherwise noted.
- All Dual Water House Connections (DWHC) shall be 3/8" meter in accordance with Standard Detail W-323.
- Notify the Bureau of Utilities, Howard County, Phone 992-2366, prior to making any tie on the existing water and sewer system.



**PROFILE**  
 SCALE Hor. 1" = 50'  
 Vert. 1" = 5'

SEDIMENT CONTROL MEASURES FOR THIS CONTRACT WILL BE IMPLEMENTED IN ACCORDANCE WITH ART. NO. 15 OF THE HOWARD COUNTY STANDARD SPECIFICATIONS AS PER ROAD CONSTRUCTION PLAN F-83-84

HOWARD SOIL CONSERVATION DISTRICT: REVISED FOR HOWARD SOIL CONSERVATION DISTRICT AND MEETS TECHNICAL REQUIREMENTS:

*James McNeil* 6-24-83  
 U.S. SOIL CONSERVATION SERVICE DATE

*Don't Home* 6-23-83  
 THIS PLAN IS APPROVED FOR SOIL EROSION AND SEDIMENT CONTROL BY THE HOWARD SOIL CONSERVATION DISTRICT  
 HOWARD SOIL CONSERVATION DISTRICT DATE



DEPARTMENT OF PUBLIC WORKS  
 HOWARD COUNTY, MARYLAND  
 Director of Public Works: *John F. Neuman* 6-28-83  
 Chief - Bureau of Engineering: *Robert M. Beinger* 6-28-83  
 Chief - Land Development Division: *William J. P.* 6-28-83

PURDUM & JESCHKE  
 ENGINEERS  
 1023 N. CALVERT ST.  
 BALTIMORE, MARYLAND

CONTRACT NO. 14-1110-D

PLAN & PROFILE  
 WATER AND SEWER MAINS

MAYFIELD MANOR, SEC. I, AREA 3, LOTS 1-25  
 1st ELECTION DISTRICT  
 HOWARD CO., MARYLAND

DRAWING NO. 1 OF 1  
 SCALE AS SHOWN  
 DES: ART  
 CHK: ART  
 DRWN: ART