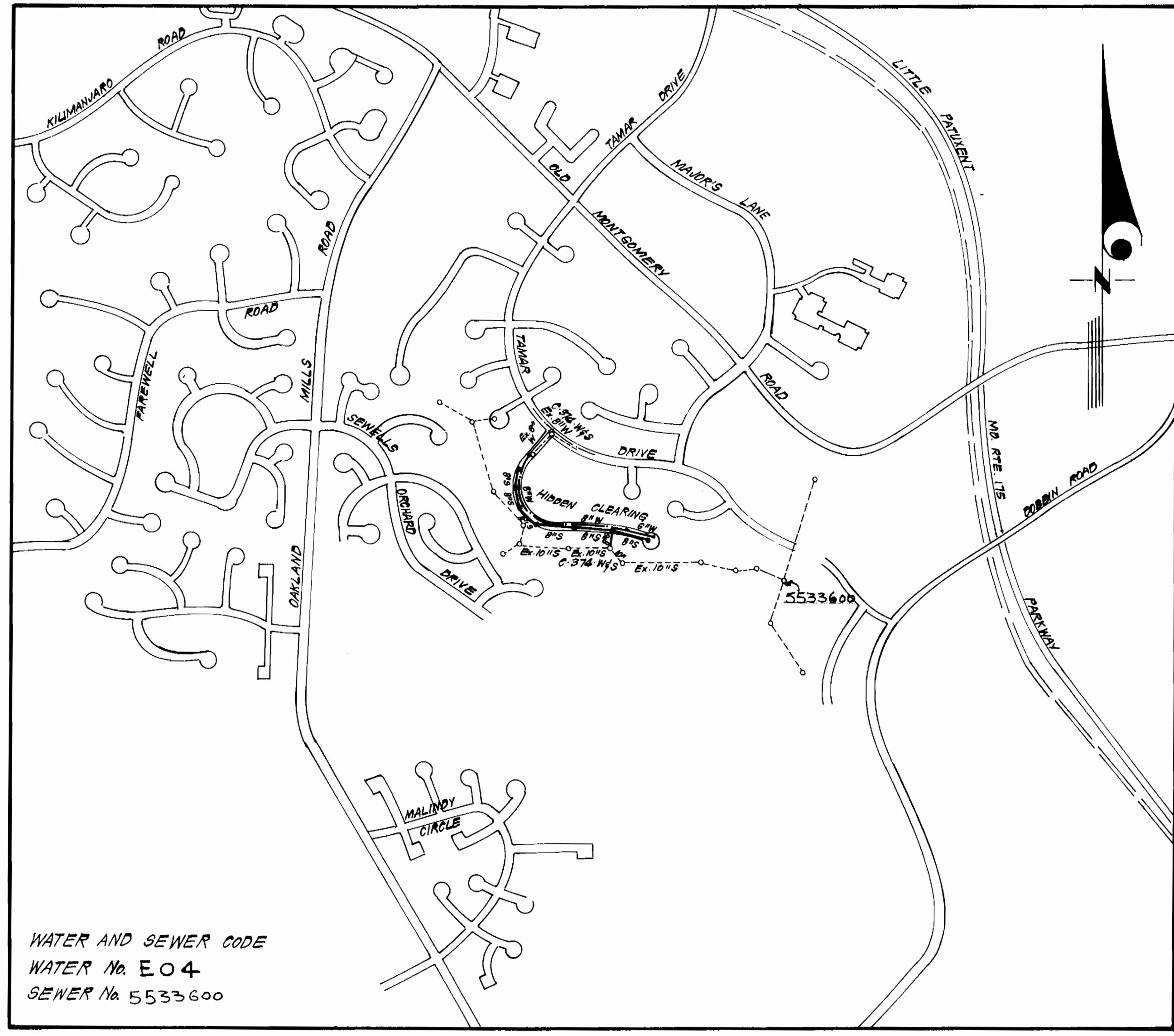


TYPE OF BUILDING	SINGLE FAMILY
NO. OF LOTS	41
NO. OF WHC	41
NO. OF SHC	41
DRAINAGE AREA	LITTLE PATUXENT



WATER AND SEWER CODE
 WATER No. E04
 SEWER No. 5533600

VICINITY MAP
 Scale: 1" = 600'

Sediment Control Measures will be implemented in accordance with Article No. 15 of the Specifications & with Road Construction Plan F.03-121; Drawing Shh. 304 Sediment & Erosion Control.

REVIEWED FOR HOWARD SOIL CONSERVATION DISTRICT AND MEETS TECHNICAL REQUIREMENT.
[Signature] 6-27-83
 SIGNATURE DATE
 U.S. SOIL CONSERVATION SERVICE
 This Development Plan is approved for Soil Erosion and Sediment Control by the Howard Soil Conservation District.
 APPROVED: *[Signature]* 6-27-83
 DATE
 Howard S.C.D.

CONTRACT NO. 24-1105-D
 SEWELLS ORCHARD
 SECTION 2 AREA I
 HOWARD COUNTY, MARYLAND
 DEPARTMENT OF PUBLIC WORKS

- ### GENERAL NOTES
- Approximate location of existing mains are shown. The contractor shall take all necessary precautions to protect existing mains and services and maintain uninterrupted supply. Any damage incurred shall be repaired immediately to the satisfaction of the Inspector, at the contractor's expense.
 - All horizontal controls are based on Maryland State Coordinates.
 - All vertical controls are based on U.S.G.S. Datum.
 - All pipe elevations shown are invert elevations.
 - Clear all utilities by a minimum of 6" clear all poles by 2'-0" minimum or tunnel as required. Any cost incurred to the contractor for tunneling or bracing at poles shall be included in unit prices bid for excavation and backfill.
 - For details not shown on the drawings use Howard County Standard Details.
 - For materials and construction methods use Howard County Standard Specifications.
 - Contractor shall locate existing utilities a minimum of two (2) weeks in advance of construction operations in the vicinity of proposed utilities at his own expense.
 - Contractor shall notify the following utilities or agencies at least five (5) working days before starting work shown on these plans.
 State Highway Administration - 531-5533
 Baltimore Gas & Electric Company - Underground Electric Distribution Customer Service - 685-0123
 Baltimore Gas & Electric Company - Underground Gas Distribution Customer Service - 685-0123
 Engineering - Damage Control - 234-5621
 "Miss Utility" - 1-559-0100
 Chesapeake & Potomac (C & P) Telephone Company - 725-9976
 American Telephone and Telegraph - Cable Location Division - 393-3553
 Colonial Pipeline Company - 781-4641
 Bureau of Utilities Howard County - 992-2366
 - Trees are to be protected from damage to maximum extent. Trees located within the construction strip are not to be removed or damaged by the contractor.
 - Contractor shall remove trees, stumps, and roots along line of excavation as directed by the Inspector. Payment for such removal shall be included in the unit price bid for excavation and backfill.
 - Place regulation "Men Working" and warning signs as required to comply with Maryland State Highway Administration Manual of Traffic Control for Highway Construction and Maintenance Operations.
 - All water mains to be C.I.P. or D.I.P. unless otherwise noted.
 - Top of all water mains to have a minimum of 3-1/2' cover unless otherwise noted.
 - Valves adjacent to tees shall be strapped to tees.
 - Block all fittings with concrete.
 - Bury line elevations on fire hydrants shall be set to the elevations shown on the drawings. All fire hydrants shall be strapped and buttressed with concrete in accordance with standard details. Soil around the fire hydrant to be compacted in accordance with Section 5-15 of the Standard Specifications.
 - All water house connections shall be for an inside meter setting.
 - The contractor shall not operate any water main valves on the existing system.
 - All sewer mains shall be C.S.P.X., V.C.P.X., P.V.C., or A.C.P. Class 2400 unless otherwise noted.
 - The contractor shall provide a joint in all sewer mains within 2'-0" of exterior manhole wall.
 - All manholes shall be 4'-0" inside diameter, unless otherwise noted.
 - Water main and water house connection lines must have a minimum of one foot separation from the sanitary sewer and sewer house connections as they cross. Except at crossings, water and sewer lines shall have a minimum horizontal separation of 10'.
 - For all copper water house connections, utilize flared type fittings only.

QUANTITIES			
ITEM	EST. QTY.	AS-BUILT	MATERIAL / SUPPLIER
6" W	357 L.F.	350 L.F.	SUPER BELL TYPE DIP / GRIFFIN PIPE PROD. CLASS 57
8" W	893 L.F.	934 L.F.	SUPER BELL TYPE DIP / GRIFFIN PIPE PROD. CLASS 57
8" S	1322 L.F.	1293 L.F.	1200 S.W. / A.P. WATER / SEWER PRODUCTS / SUPPLIES, INC.
2" H.	2 EA.	2 EA.	2" DIA. / FLOW IND., INC.
6" (ENCL/P.H.)	1 EA.	1 EA.	PRESSER METRO M3 / FLOW IND., INC.
8" V	1 EA.	1 EA.	DRESSER METRO M3 / FLOW IND., INC. GATE VALVE

[Signature]
 5-16-83

SEWELLS ORCHARD
 LOTS 1 THRU 41
 SECTION 2 AREA I
 6TH ELECTION DISTRICT

CLARK • FINEFROCK & SACKETT
 ENGINEERS • PLANNERS • SURVEYORS
 11315 LOCKWOOD DRIVE • SILVER SPRING, MARYLAND • (301) 593-3400

DEPARTMENT OF PUBLIC WORKS
 HOWARD COUNTY, MARYLAND
 Director of Public Works DATE: *[Signature]* 7-1-83
 Chief, Bureau of Engineering DATE: *[Signature]* 7-1-83
 Chief, Bureau of Utilities DATE: *[Signature]* 6-30-83
 Chief, Land Development Div. DATE: *[Signature]* 7-1-83

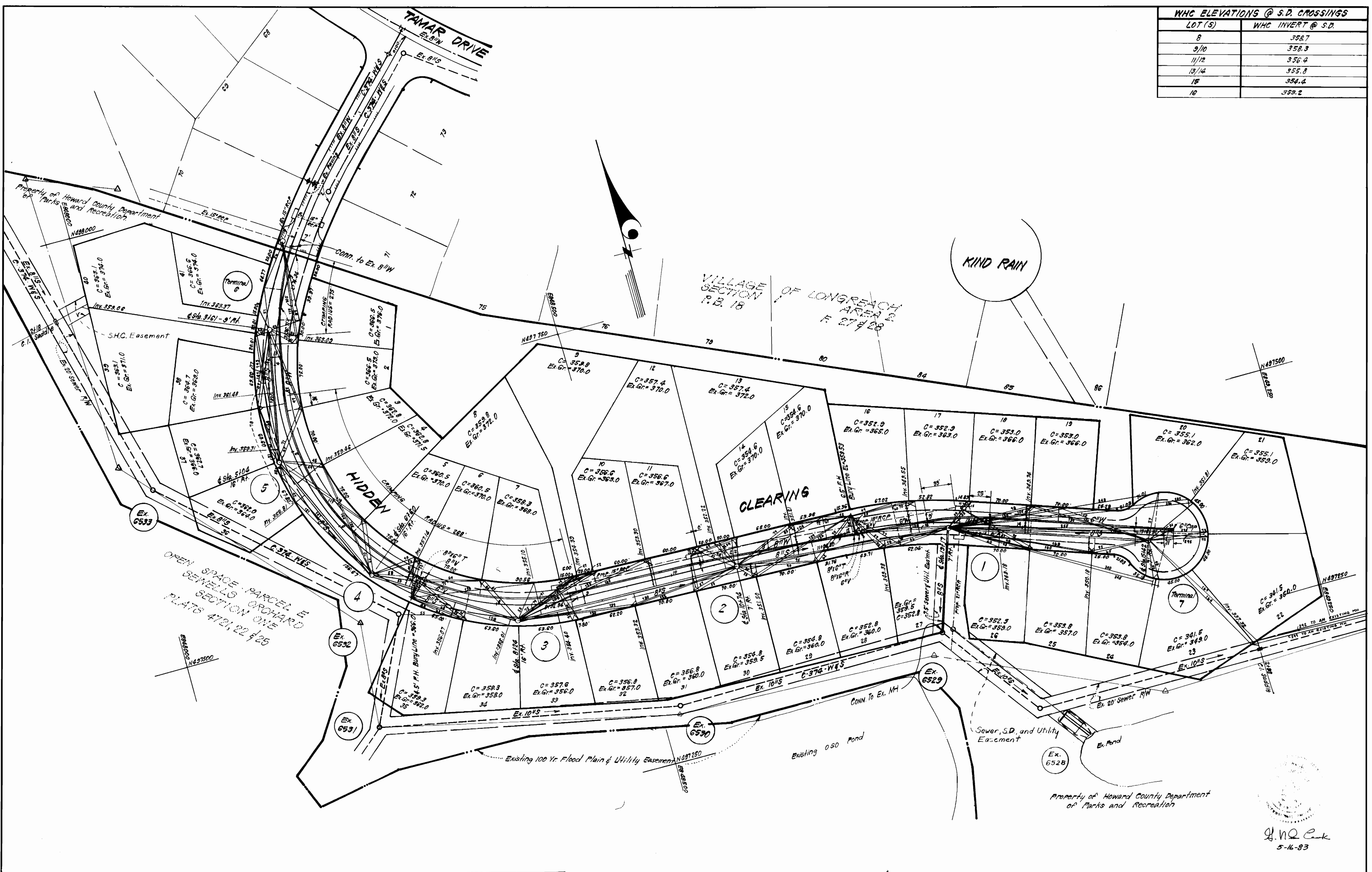
CONTRACT NO. 24-1105-D

TITLE SHEET

SECTION 2 AREA I
 SEWELLS ORCHARD
 6TH ELECTION DISTRICT

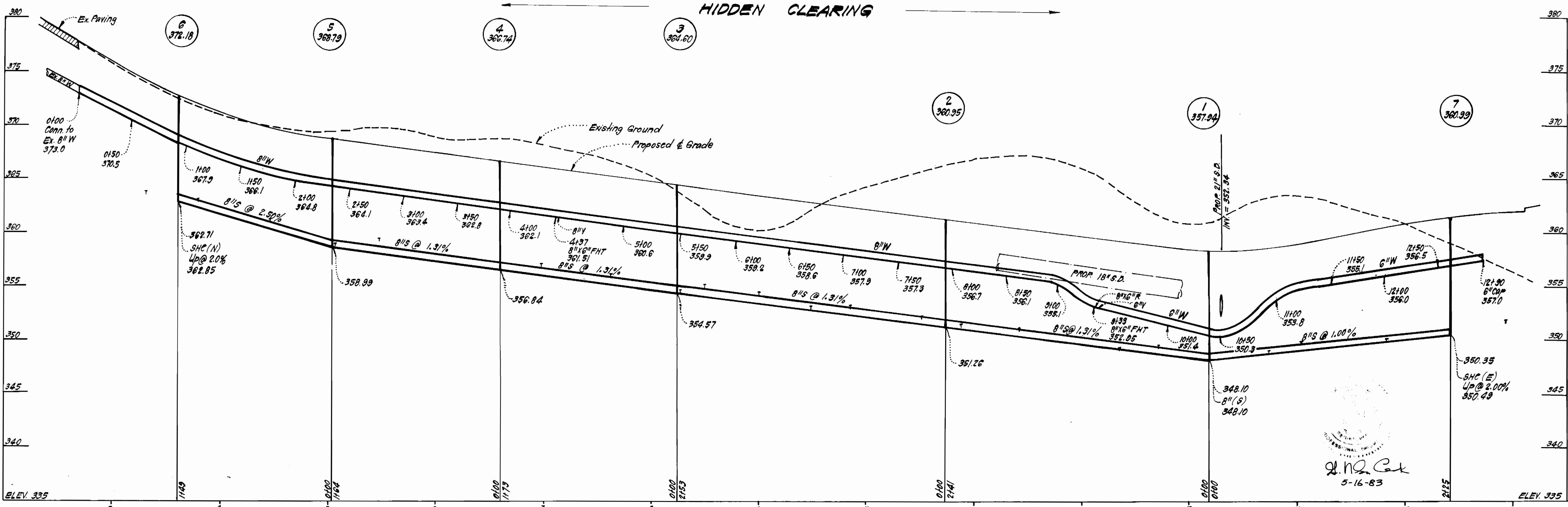
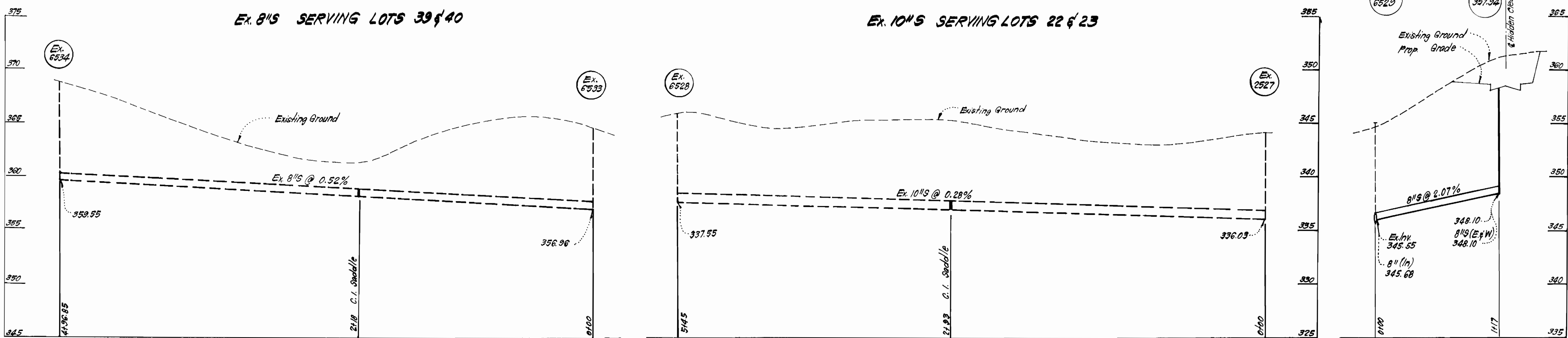
DRAWING NO. 1 OF 3
 SCALE AS SHOWN

WHC ELEVATIONS @ S.D. CROSSINGS	
LOT(S)	WHC INVERT @ S.D.
8	352.7
9/10	358.3
11/12	356.4
13/14	355.8
15	354.4
16	353.2



J. N. Q. Cook
5-16-83

<p>CLARK • FINEFROCK & SACKETT ENGINEERS • PLANNERS • SURVEYORS 11315 LOCKWOOD DRIVE • SILVER SPRING, MARYLAND • (301) 593-3400</p>	<p>DEPARTMENT OF PUBLIC WORKS HOWARD COUNTY, MARYLAND</p> <p><i>John F. Neumaier</i> 7-1-83 DIRECTOR OF PUBLIC WORKS DATE</p> <p><i>Rhonda B...</i> 6-30-83 CHIEF, BUREAU OF UTILITIES DATE</p>	<p><i>William R. ...</i> 7-1-83 CHIEF BUREAU OF ENGINEERING DATE</p> <p><i>William J. ...</i> 8-1-83 CHIEF, LAND DEVELOPMENT DIV. DATE</p>	<p>CONTRACT NO. 24-1105 D W & S</p>	<p>PLAN OF WATER AND SEWER MAINS</p>	<p>SECTION 2 AREA 1 SEWELLS ORCHARD 6th ELECTION DISTRICT</p>	<p>DRAWING NO. 2 OF 3</p>	<p>SCALE 1" = 50'</p>
	<p>AS-BUILT JULY 12, 1984</p>						



CLARK • FINEFROCK & SACKETT ENGINEERS • PLANNERS • SURVEYORS 11315 LOCKWOOD DRIVE • SILVER SPRING, MARYLAND • (301) 593-3400	DEPARTMENT OF PUBLIC WORKS HOWARD COUNTY, MARYLAND Director of Public Works: <i>Frank F. Nalley</i> 7-1-83 Chief, Bureau of Engineering: <i>William J. ...</i> 7-1-83 Chief, Bureau of Utilities: <i>...</i> 7-1-83 Chief, Land Development Div.: <i>...</i> 7-1-83	CONTRACT NO. 24-1105 D W 8 S	PROFILES OF WATER & SEWER MAINS	SECTION 2 AREA I SEWELLS ORCHARD 6th ELECTION DISTRICT	DRAWING NO. 3 OF 3	SCALE H. 1" = 50' V. 1" = 5'
	AS-BUILT JULY 12, 1984					