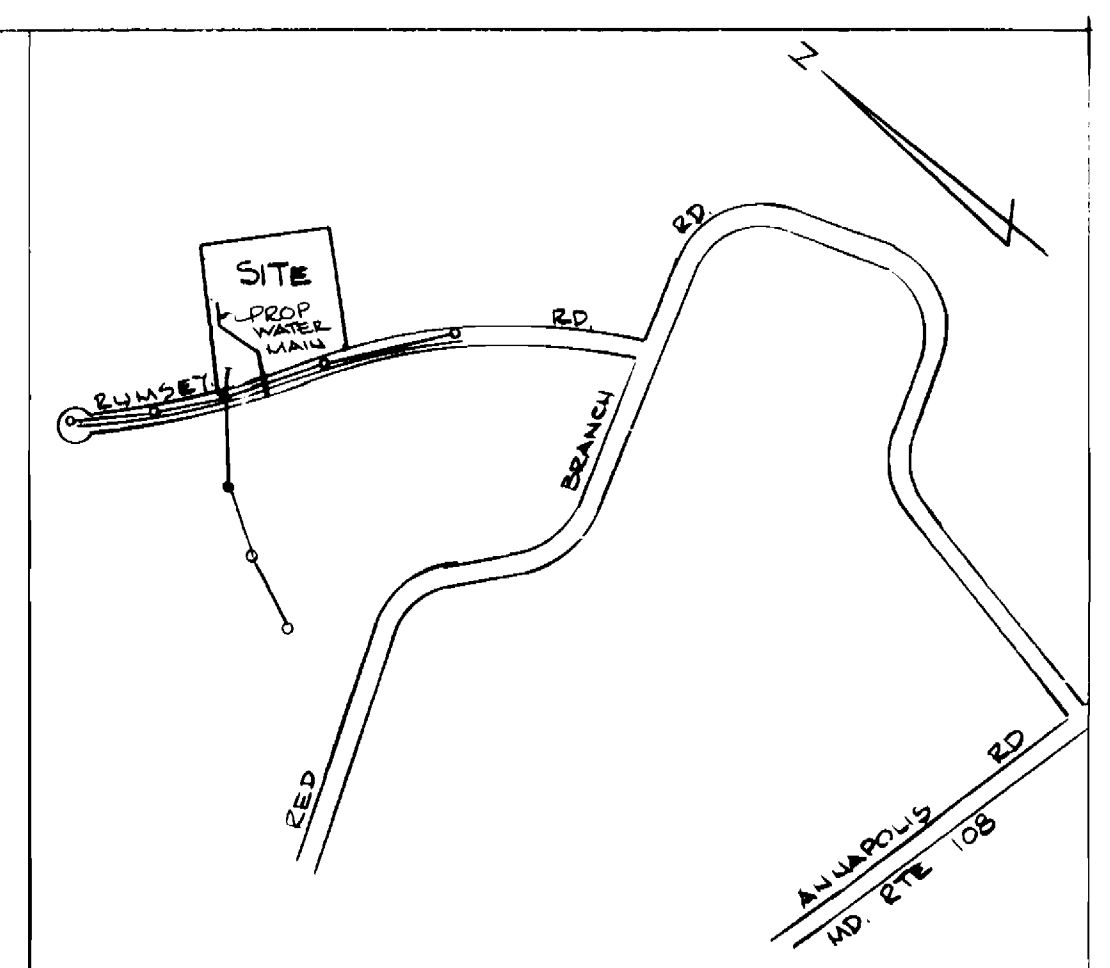
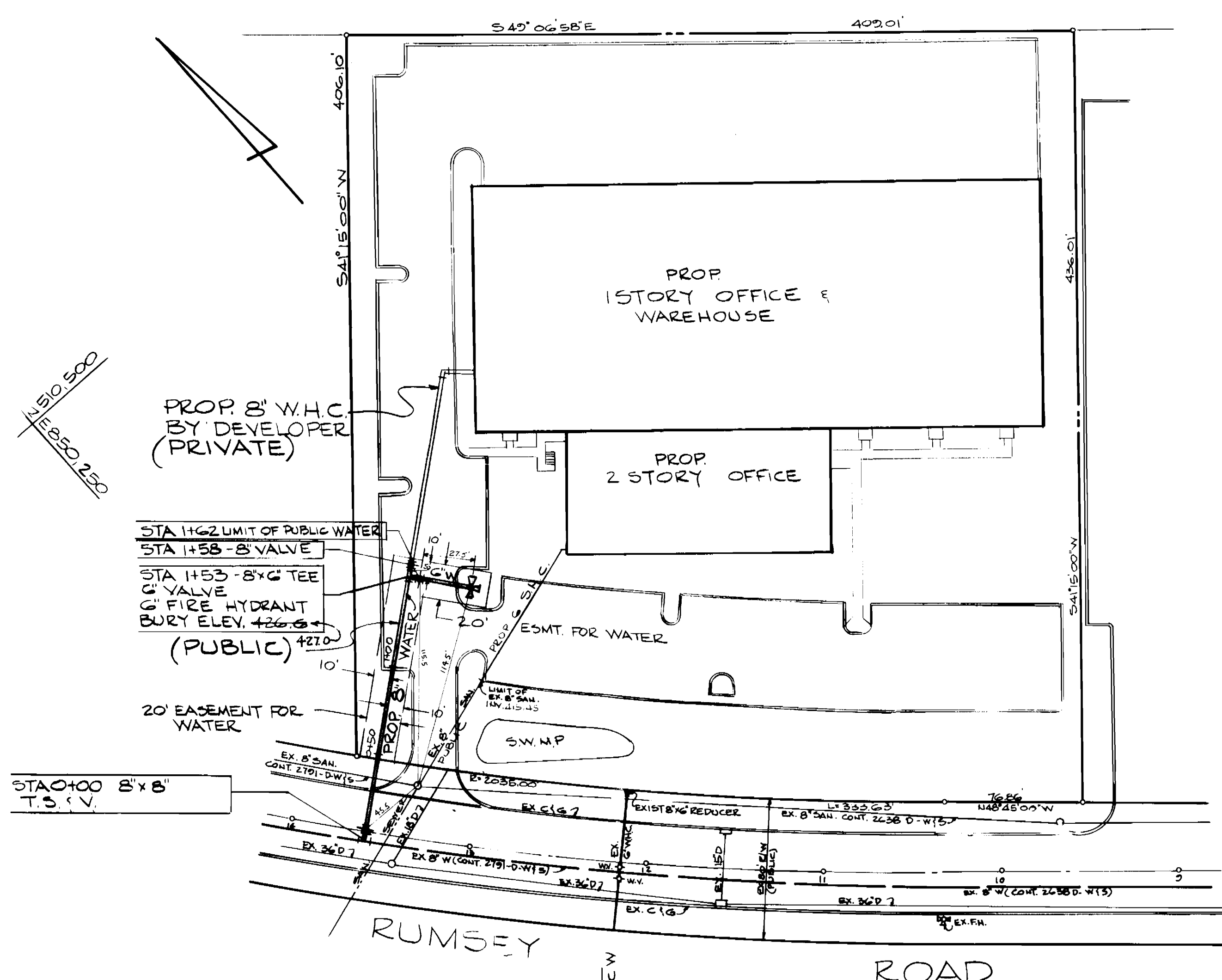


BENCH MARK: PK. C + STA. 10+32.58
ELEV. 430.35

QUANTITIES (PUBLIC ONLY)			
ITEM	ESTIMATED	A.S. BUILT	SUPPLIER MATERIAL
8" WATER	162 LF	162 LF	D.I.P. C. 52 / ATLANTIC STATES
6" WATER	35 LF	30 LF	" " " "
8" VALVE	2	2	MUELLER
6" VALVE	1	1	"
FIRE HYDRANT	1	1	AMERICAN DARLING



WATER CODE FOR COUNTY USE
WATER NO. 604

TYPE OF BUILDINGS - WAREHOUSE & OFFICE
NO. OF LOTS 1
NO. OF WATER HOUSE CONNECTIONS - 1

- GENERAL NOTES**
- APPROXIMATE LOCATION OF EXISTING MAINS ARE SHOWN. THE CONTRACTOR SHALL TAKE ALL NECESSARY PRECAUTIONS TO PROTECT EXISTING MAINS & SERVICES & MAINTAIN UNINTERRUPTED SUPPLY. ANY DAMAGE INCURRED SHALL BE REPAIRED IMMEDIATELY.
 - ALL HORIZ. CONTROLS ARE BASED ON MD STATE COORDINATES.
 - ALL VERTICAL CONTROLS ARE BASED ON U.S.G.S. DATUM.
 - ALL PIPE ELEV'S SHOWN ARE INVERT ELEVATIONS. CLEAR ALL UTILITIES BY A MIN. OF 6'. CLEAR ALL POLES 2'-0" MIN. OR TUNNEL AS REQUIRED.
 - FOR ALL STD. DETAILS SEE STANDARD BOUND SPECIFICATIONS.
 - CONTRACTORS SHALL NOTIFY THE FOLLOWING UTILITIES & AGENCIES AT LEAST FIVE (5) DAYS BEFORE STARTING WORK ON THESE PLANS: CUSTOMER SERVICE 685-0123, HOWARD COUNTY BUREAU OF UTILITIES 302-2366, AMERICAN TELEPHONE & TELEGRAPH, CABLE LOCATION DIVISION 301-393-3553.
 - CONTRACTOR SHALL LOCATE EXISTING UTILITIES IN ADVANCE OF CONSTRUCTION OPERATIONS IN THE VICINITY OF PROPOSED UTILITIES.
 - CONTRACTOR SHALL REMOVE TREES, STUMPS, & ROOTS ALONG LINE OF EXCAVATION AS DIRECTED BY THE ENGINEER. PAYMENT FOR SUCH REMOVAL SHALL BE INCLUDED IN THE UNIT PRICE BID FOR EXCAVATION & BACKFILL FOR WATER MAINS.
 - TREES ARE TO BE PROTECTED FROM DAMAGE TO MAXIMUM EXTENT. TREES LOCATED WITHIN THE CONSTRUCTION STRIP ARE NOT TO BE REMOVED OR DAMAGED BY THE CONTRACTOR.
 - PLACE REGULATION "MEN WORKING" & WARNING SIGNS AS REQUIRED TO COMPLY WITH THE MD. STATE HIGHWAY ADMINISTRATION MANUAL OF TRAFFIC CONTROL FOR HIGHWAY CONSTRUCTION & MAINTENANCE OPERATIONS.
 - ALL WATER MAINS TO BE C.I.P. OR D.I.P. UNLESS OTHERWISE NOTED.
 - TOP OF ALL WATER MAINS TO HAVE 3/2" OF COVER UNLESS OTHERWISE NOTED.
 - ALL VALVES SHALL BE STRAPPED TO TEES IN ACCORDANCE WITH STANDARD DETAILS.
 - BLOCK ALL FITTINGS WITH CONCRETE. SEE STANDARDS BOUND IN SPECIFICATIONS.
 - BURY LINE ELEVATIONS ON FIRE HYDRANTS SHALL BE TO THE ELEVATIONS SHOWN ON THE DRAWINGS. ALL FIRE HYDRANTS SHALL BE STRAPPED & BUTTRESSED IN CONCRETE IN ACCORDANCE WITH THE STD. DETAILS. SOIL AROUND THE FIRE HYDRANTS TO BE COMPACTED IN ACCORDANCE WITH SECTION 5-15 OF THE STD. SPECS.
 - ALL WATER HOUSE CONNECTIONS SHALL BE METER SETTING FOR INSIDE.
 - THE CONTRACTOR SHALL NOT OPERATE ANY WATER MAIN VALVES ON THE EXISTING SYSTEM.

SEDIMENT CONTROL MEASURES WILL BE IMPLEMENTED IN ACCORDANCE WITH ARTICLE No. 15 OF THE SPECIFICATIONS & WITH S.D.P. 83-76.

REVIEWED FOR HOWARD SOIL CONSERVATION DISTRICT AND MEETS TECHNICAL REQUIREMENT

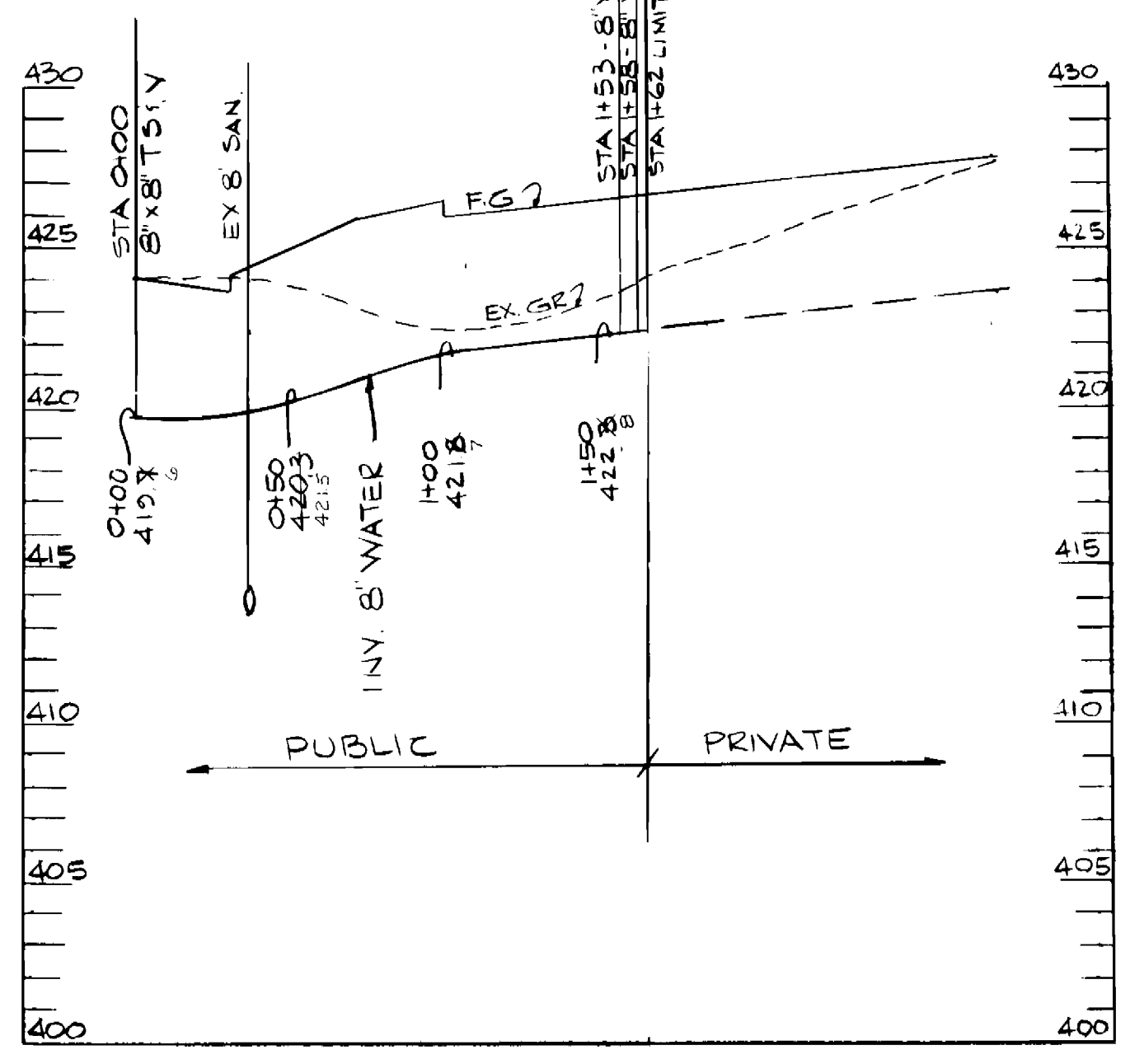
[Signature] 3-23-83
SIGNATURE DATE

U.S. SOIL CONSERVATION SERVICE

THIS PLAN IS APPROVED FOR SOIL EROSION AND SEDIMENT CONTROL BY THE HOWARD SOIL CONSERVATION DISTRICT

APPROVED:

[Signature] 3-23-83
HOWARD S.C.D. DATE



DEPARTMENT OF PUBLIC WORKS
HOWARD COUNTY, MD

3-20-83 3-20-83
DIRECTOR OF PUBLIC WORKS - DATE CHIEF BUREAU OF ENGINEERING - DATE

3-24-83 3-24-83
CHIEF BUREAU OF UTILITIES - DATE CHIEF LAND DEVELOPMENT DIVISION - DATE

HUDKINS ASSOCIATES INC.
ENGINEERS & LAND SURVEYORS
101 SHELL BUILDING
200 E JOPPA RD. TOWSON, MD 21204

CONTRACT NO 44-1103-D

PLAN & PROFILE OF WATER MAIN

LOT 104
OAKLAND RIDGE INDUSTRIAL PARK
SECTION 2
2ND ELECTION DISTRICT HOWARD COUNTY, MD.

OAKLAND RIDGE INDUSTRIAL PARK LOT 104 - SECTION 2	
DRAWING No 1 OF 1	SCALE: PLAN 1" = 50' PROFILE 1" = 50' VERT. 1" = 5' JOB # 6264 DATE: 1-14-1983

A.S. BUILT AUG 1983

JOB 6264