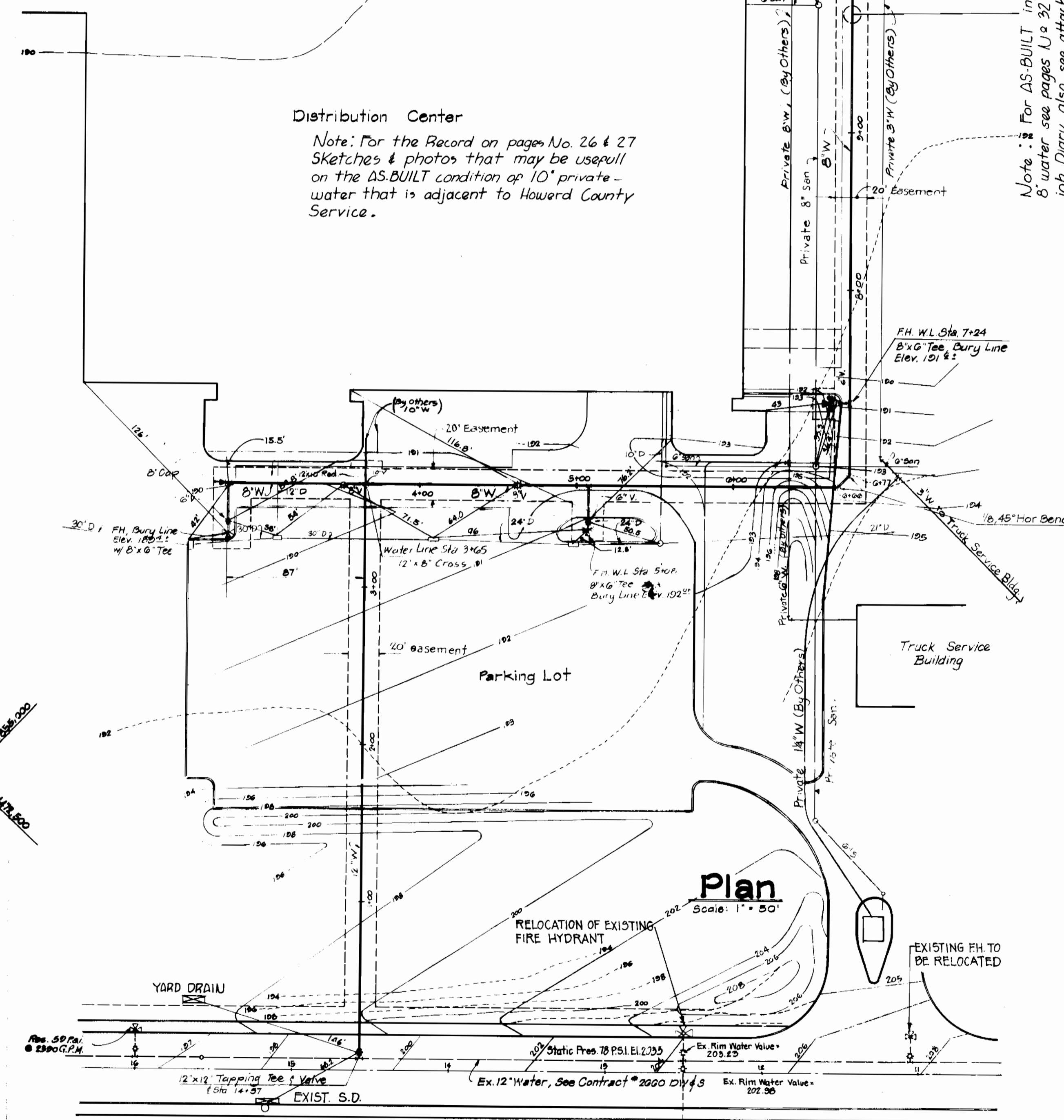
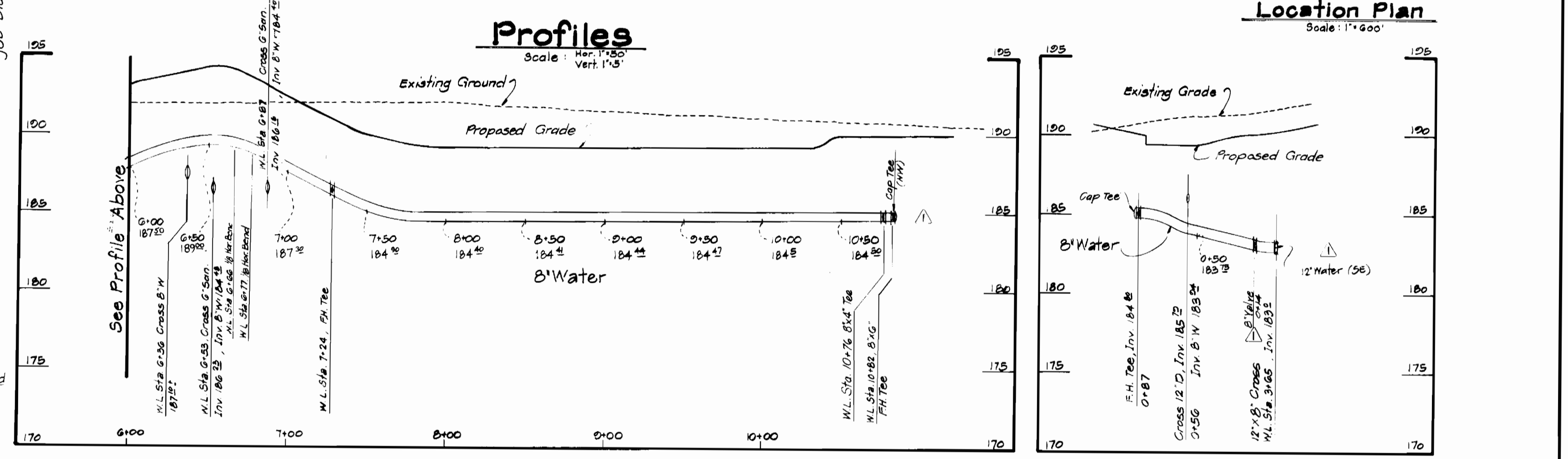
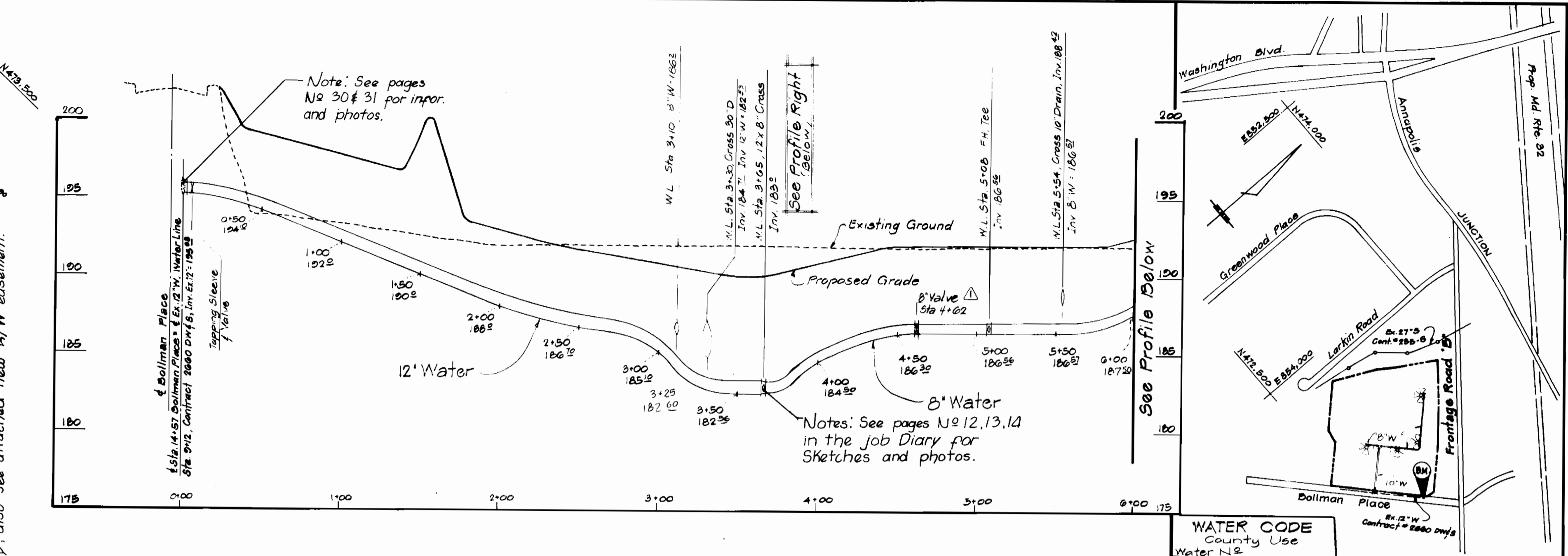
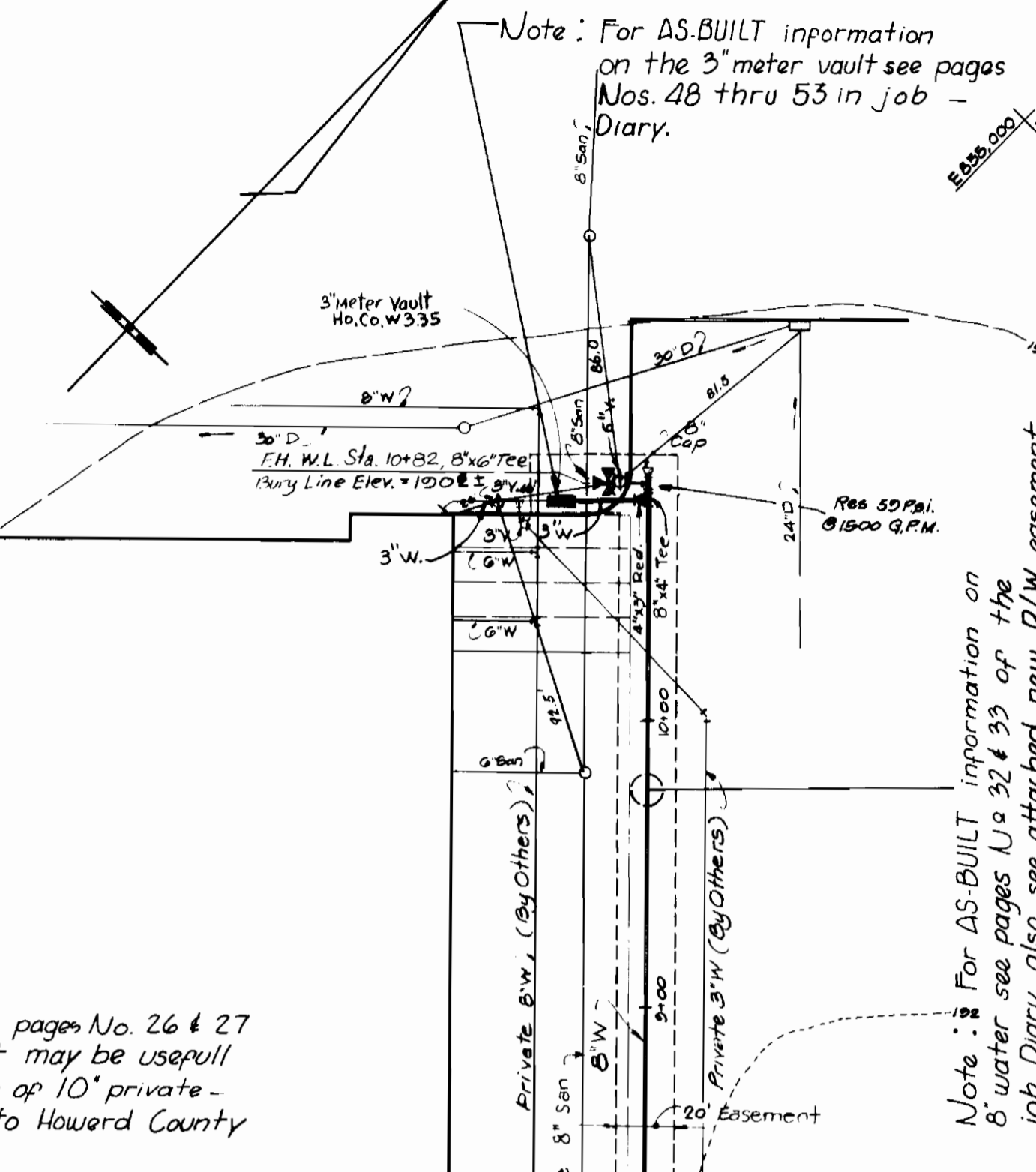


QUANTITIES			
Item	Estimated	As Built	Matl/Supplier
12" Water	365 L.F.	365.0	GRIFIN PIPE
8" Water	800 L.F.	800.0	"
6" Water	55 L.F.	58.2	"
3" Water	25 L.F.	44.5	"
12" Valve	1 Ea.	1 EA.	U.S. PIPE/FOUNDRY
8" Valve	2 Ea.	2 EA.	"
6" Valve	4 Ea.	4 EA.	"
6" Fire Hyd	4 Ea.	4 EA.	U.S. PIPE/FOUNDRY
10" Valve	1 Ea.	1 EA.	"
10"x12" R.D.R.	1 Ea.	1 EA.	"
3" Meter Vault	1 Ea.	1 EA.	TERRE HILL PROD.
12"x12" Tapping Sleeve	1 Ea.	1 EA.	U.S. PIPE/FOUNDRY
12" Tapping Valve	1 Ea.	1 EA.	"
3" Valve	2 Ea.	2 EA.	"



- GENERAL NOTES:**
- PART I**
- APPROXIMATE LOCATION OF EXISTING MAINS ARE SHOWN. THE CONTRACTOR SHALL TAKE ALL NECESSARY PRECAUTIONS TO PROTECT EXISTING MAINS AND SERVICES AND MAINTAIN UNINTERRUPTED SUPPLY. ANY DAMAGE INCURRED SHALL BE REPAIRED IMMEDIATELY TO THE SATISFACTION OF THE ENGINEER, AT THE CONTRACTOR'S EXPENSE.
  - ALL HORIZONTAL CONTROLS ARE BASED ON MARYLAND STATE COORDINATES.
  - ALL VERTICAL CONTROLS ARE BASED ON U.S.G.S. DATUM.
  - ALL PIPE ELEVATIONS SHOWN ARE INVERT ELEVATIONS.
  - CLEAR ALL UTILITIES BY A MINIMUM OF 6". CLEAR ALL POLES BY 2'-0" MIN. OR TUNNEL AS REQUIRED. ANY COST INCURRED TO THE CONTRACTOR FOR TUNNELING OR BRACING AT POLES SHALL BE INCLUDED IN UNIT PRICES BID FOR EXCAVATION AND BACKFILL.
  - FOR DETAILS NOT SHOWN ON DRAWINGS USE HOWARD COUNTY STANDARD DETAILS.
  - FOR MATERIALS & CONSTRUCTION METHODS USE HOWARD COUNTY STANDARD SPECS.
  - CONTRACTOR SHALL LOCATE EXISTING UTILITIES A MINIMUM OF TWO (2) WEEKS IN ADVANCE OF CONSTRUCTION OPERATIONS IN THE VICINITY OF PROPOSED UTILITIES AT HIS OWN EXPENSE.
  - CONTRACTOR SHALL NOTIFY THE FOLLOWING UTILITIES OR AGENCIES AT LEAST FIVE (5) WORKING DAYS BEFORE STARTING WORK SHOWN ON THESE PLANS:
    - STATE HIGHWAY ADMINISTRATION - 531-5533
    - BALTIMORE GAS & ELECTRIC CO. - UNDERGROUND ELECTRIC DISTRIBUTION - CUSTOMER SERVICE - 685-0123
    - BALTIMORE GAS & ELECTRIC CO. - UNDERGROUND GAS DISTRIBUTION - CUSTOMER SERVICE - 685-0123
    - ENGINEERING - "DAMAGE CONTROL" - 234-5521
    - "MISS UTILITY" - 1-559-0100
    - CHESAPEAKE & POTOMAC (C.P.) TELEPHONE COMPANY - 725-9976
    - AMERICAN TELEPHONE AND TELEGRAPH-CABLE LOCATION DIVISION - 393-3553
    - CORONAL PIPELINE COMPANY - 781-4641
    - BUREAU OF UTILITIES HOWARD COUNTY - 992-2366
  - TREES ARE TO BE PROTECTED FROM DAMAGE TO MAXIMUM EXTENT. TREES LOCATED WITHIN THE CONSTRUCTION STRIP ARE NOT TO BE REMOVED OR DAMAGED BY THE CONTRACTOR.
  - CONTRACTOR SHALL REMOVE TREES, STUMPS & ROOTS ALONG LINE OF EXCAVATION AS DIRECTED BY THE ENGINEER. PAYMENT FOR SUCH REMOVAL SHALL BE INCLUDED IN THE UNIT PRICE BID FOR EXCAVATION AND BACKFILL.
  - PLACE REGULATION "MEN WORKING" AND WARNING SIGNS AS REQUIRED TO COMPLY WITH MARYLAND STATE HIGHWAY ADMINISTRATION MANUAL OF TRAFFIC CONTROL FOR HIGHWAY CONSTRUCTION AND MAINTENANCE OPERATIONS.
- PART II**
- ALL WATER MAINS TO BE C.I.P. OR D.I.P. UNLESS OTHERWISE NOTED.
  - TOP OF ALL WATER MAINS TO HAVE A MINIMUM OF 3'-1/2' COVER UNLESS OTHERWISE NOTED.
  - VALVES ADJACENT TO TEES SHALL BE STRAPPED TO TEES.
  - BLOCK ALL FITTINGS WITH CONCRETE.
  - BURY LINE ELEVATIONS OF FIRE HYDRANTS SHALL BE SET TO THE ELEVATIONS SHOWN ON THE DRAWINGS. ALL FIRE HYDRANTS SHALL BE STRAPPED AND BUTTRESSED WITH CONCRETE IN ACCORDANCE WITH STANDARD DETAILS. SOIL AROUND THE FIRE HYDRANT TO BE COMPACTED IN ACCORDANCE WITH SECTION 5-15 OF THE STANDARD SPECIFICATIONS.
  - ALL WATER HOUSE CONNECTIONS SHALL BE FOR AN INSIDE METER SETTING.
  - THE CONTRACTOR SHALL NOT OPERATE ANY WATER MAIN VALVES ON THE EXISTING SYSTEM.

**BOLLMAN PLACE**

DEPARTMENT OF PUBLIC WORKS  
HOWARD COUNTY, MARYLAND

Director of Public Works  
Date: \_\_\_\_\_

Chief - Bureau of Engineering  
Date: \_\_\_\_\_

Chief - Bureau of Utilities  
Date: \_\_\_\_\_

**Century Engineering, Inc.**  
CONSULTING ENGINEERS - PLANNERS  
TOWSON, MARYLAND 21204

Contract No. 44-1099 D

REVIEWED FOR HOWARD SOIL CONSERVATION DISTRICT AND MEETS TECHNICAL REQUIREMENT.

Signature: \_\_\_\_\_ Date: 3-2-83

U.S. SOIL CONSERVATION SERVICE

THIS DEVELOPMENT PLAN IS APPROVED FOR SOIL EROSION AND SEDIMENT CONTROL BY THE HOWARD COUNTY CONSERVATION DISTRICT.

APPROVED: \_\_\_\_\_ Date: 3-2-83

HOWARD S.C.D.

Sediment Control measures will be implemented in accordance with Article 15 of the Specifications and SDP-82-66.

MARRIOTT DISTRIBUTION CENTER  
CORRIDOR INDUSTRIAL PARK  
SECTION 2, PARCEL 'A'

**CORRIDOR INDUSTRIAL PARK**

6th ELECTION DISTRICT  
HOWARD COUNTY, MARYLAND

DRAWING NO. 1 OF 1

SCALE As Shown

7/15/84	Relocated 12" (8" cross) and 8" (7" cross) south of Bollman Place. (Removed in check water vault)	C.E.I.
4/12/83	Added valve to profile, removed F.W. in profile, removed 3' of water line	C.E.I.
Date	Revision	By

DRAWING 44-132-33864