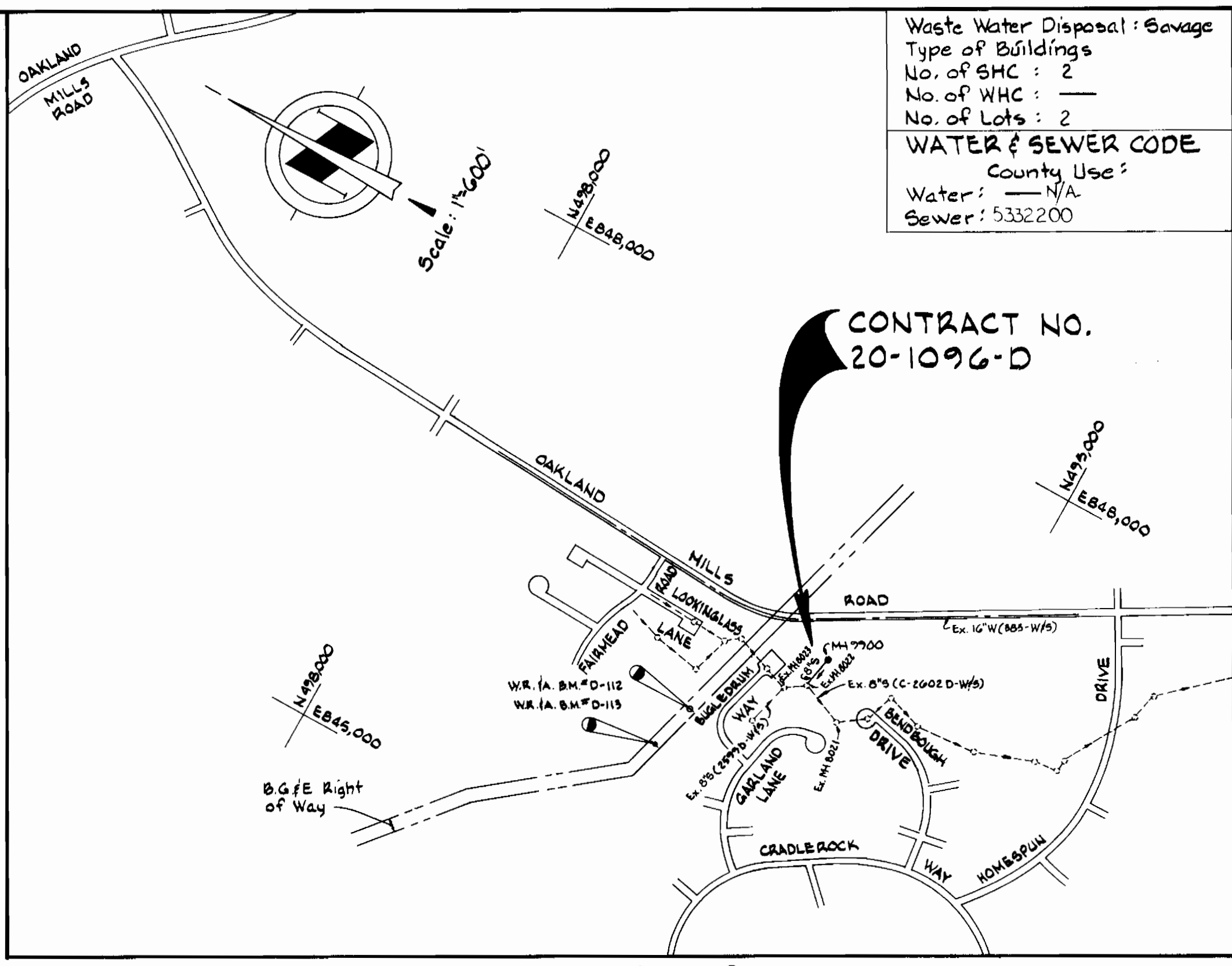


**PLAN**  
Scale: 1"=50'



**VICINITY MAP**  
Scale: 1"=600'

Waste Water Disposal: Sewage  
 Type of Buildings  
 No. of S.H.C.: 2  
 No. of W.H.C.: —  
 No. of Lots: 2  
**WATER & SEWER CODE**  
 County Use:  
 Water: —/N/A  
 Sewer: 5332200

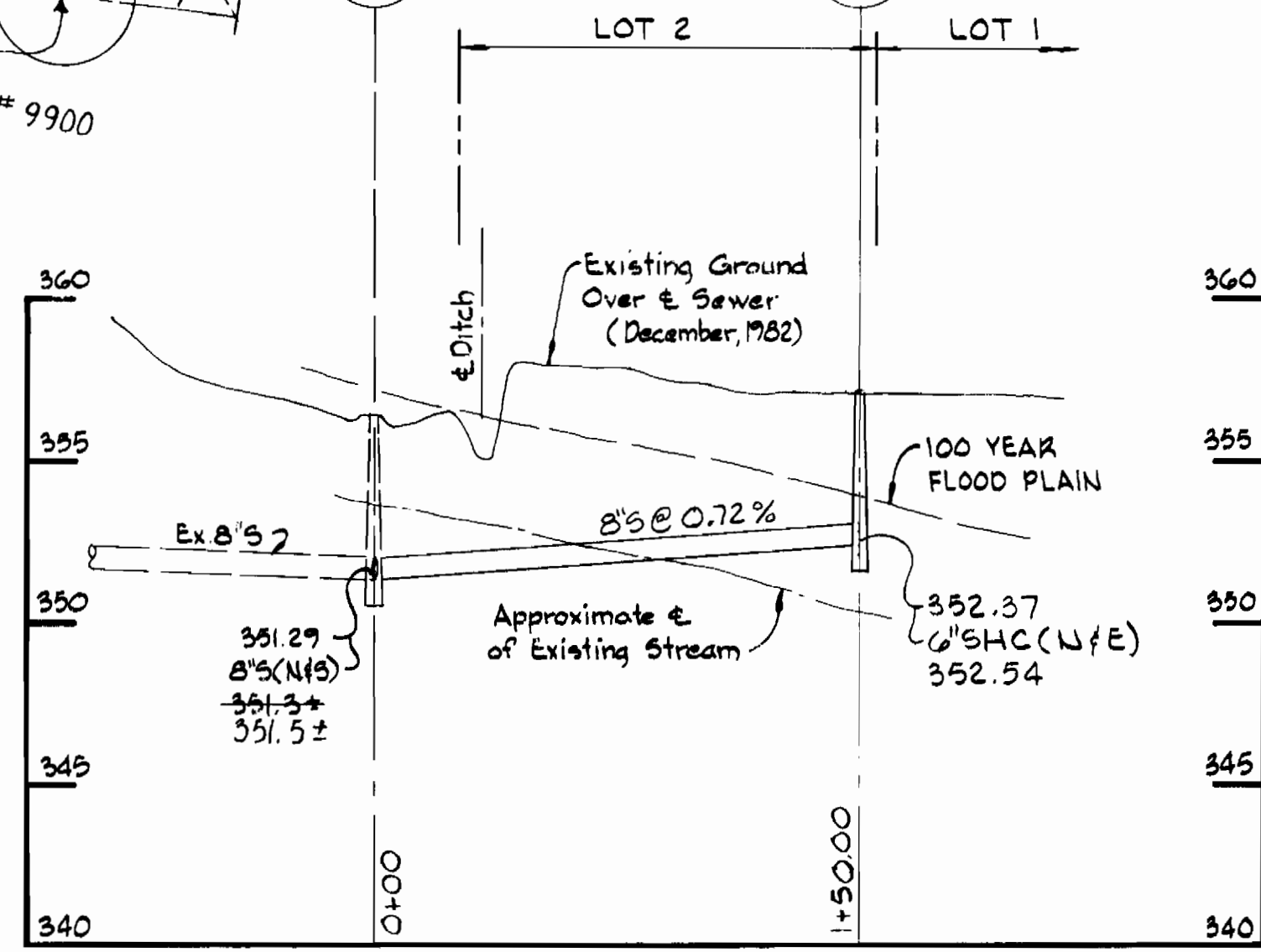
**CONTRACT NO.**  
20-1096-D

**GENERAL NOTES**

- APPROXIMATE LOCATION OF EXISTING MAINS ARE SHOWN. THE CONTRACTOR SHALL TAKE ALL NECESSARY PRECAUTIONS TO PROTECT EXISTING MAINS AND SERVICES AND MAINTAIN UNINTERRUPTED SUPPLY. ANY DAMAGE INCURRED SHALL BE REPAIRED IMMEDIATELY TO THE SATISFACTION OF THE ENGINEER, AT THE CONTRACTOR'S EXPENSE.
- ALL HORIZONTAL CONTROLS ARE BASED ON MARYLAND STATE COORDINATES.
- ALL VERTICAL CONTROLS ARE BASED ON U.S.G.S. DATUM.
- ALL PIPE ELEVATIONS SHOWN ARE INVERT ELEVATIONS.
- CLEAR ALL UTILITIES BY A MINIMUM OF 6". CLEAR ALL POLES BY 3'-0" MINIMUM OR TUNNEL AS REQUIRED. ANY COST INCURRED TO THE CONTRACTOR FOR TUNNELING OR BRACING AT POLES SHALL BE INCLUDED IN UNIT PRICES BID FOR CONSTRUCTION OF THE MAIN.
- FOR DETAILS NOT SHOWN ON THE DRAWINGS USE HOWARD COUNTY STANDARD DETAILS.
- FOR MATERIALS AND CONSTRUCTION METHODS USE HOWARD COUNTY STANDARD SPECIFICATIONS.
- CONTRACTOR SHALL LOCATE EXISTING UTILITIES A MINIMUM OF TWO (2) WEEKS IN ADVANCE OF CONSTRUCTION OPERATIONS IN THE VICINITY OF PROPOSED UTILITIES AT HIS OWN EXPENSE.
- CONTRACTOR SHALL NOTIFY THE FOLLOWING UTILITIES OR AGENCIES AT LEAST FIVE (5) WORKING DAYS BEFORE STARTING WORK SHOWN ON THESE PLANS:
  - STATE HIGHWAY ADMINISTRATION - 531-5533
  - BALTIMORE GAS & ELECTRIC COMPANY - UNDERGROUND ELECTRIC DISTRIBUTION CUSTOMER SERVICE - 685-0123.
  - BALTIMORE GAS & ELECTRIC COMPANY - UNDERGROUND GAS DISTRIBUTION CUSTOMER SERVICE - 685-0128.
  - ENGINEERING - "DAMAGE CONTROL" - 234-5621.
  - "MISS UTILITY" - 1-558-0100
  - CHESAPEAKE & POTOMAC (C&P) TELEPHONE COMPANY - 725-9976
  - AMERICAN TELEPHONE AND TELEGRAPH - CABLE LOCATION DIVISION - 393-3553
  - COLONIAL PIPELINE COMPANY - 781-9641
  - BUREAU OF UTILITIES HOWARD COUNTY - 902-2366
- TREES ARE TO BE PROTECTED FROM DAMAGE TO MAXIMUM EXTENT. TREES LOCATED WITHIN THE CONSTRUCTION STRIP ARE NOT TO BE REMOVED OR DAMAGED BY THE CONTRACTOR.
- CONTRACTOR SHALL REMOVE TREES, STUMPS AND ROOTS ALONG LINE OF EXCAVATION AS DIRECTED BY THE ENGINEER. PAYMENT FOR SUCH REMOVAL SHALL BE INCLUDED IN THE UNIT PRICE BID FOR CONSTRUCTION OF THE MAIN.
- PLACE REGULATION SIGN WORKING AND WARNING SIGNS AS REQUIRED TO COMPLY WITH MARYLAND STATE HIGHWAY ADMINISTRATION MANUAL OF TRAFFIC CONTROL FOR HIGHWAY CONSTRUCTION AND MAINTENANCE OPERATIONS.
- ALL SEWER MAINS SHALL BE C.S.P.X., R.C.S.P., V.C.P.X., A.C.P. CLASS 2400 OR PVC UNLESS OTHERWISE NOTED.
- THE CONTRACTOR SHALL PROVIDE A JOINT IN ALL SEWER MAINS WITHIN 2'-0" OF EXTERIOR MANHOLE WALL.
- ALL MANHOLES SHALL BE 4'-0" INSIDE DIAMETER, UNLESS OTHERWISE NOTED.
- MANHOLES SHOWN WITH 12" AND 16" WALLS ARE BRICK MANHOLES ONLY.
- MANHOLES DESIGNATED W.T. IN PLAN AND PROFILE SHALL HAVE WATERTIGHT FRAME AND COVERS, STANDARD DETAIL G.5.2.

**COORDINATE SCHEDULE**

NO	NORTH	EAST
PI. MH 8022	495716.68	846472.25
PI. SPUR 1460	495657.27	846620.81



**PROFILE**  
Scale: H=1"=50'  
V=1"=5'

**QUANTITIES**

ITEM	BID	AS-BUILT	MATERIAL/SUPPLIER
8" Sewer L.F.	150	150 LF.	PVC. E.T.I.
Manholes Ea.	1	1	MANHOLE ATLANTIC PRECAST

Sediment Controls for this Contract will be implemented in accordance with Article 15 of the Standard Specifications.

REVIEWED FOR HOWARD SOIL CONSERVATION DISTRICT AND MEETS TECHNICAL REQUIREMENT

*James M. Helmer*  
 SIGNATURE DATE 2/16/83  
 U.S. SOIL CONSERVATION SERVICE

This Development Plan is approved for Soil Erosion and Sediment Control by the Howard Soil Conservation District.

APPROVED: *Howard SCD*  
 SIGNATURE DATE 2-16-83  
 HOWARD SCD

DEPARTMENT OF PUBLIC WORKS  
 HOWARD COUNTY, MARYLAND  
*John F. Neuman* 2-22-83 DIRECTOR OF PUBLIC WORKS - DATE  
*Richard M. Beatty* 2-22-83 CHIEF - BUREAU OF UTILITIES - DATE  
*John J. ...* 2-22-83 CHIEF - BUREAU OF ENGINEERING - DATE  
*...* 2-22-83 CHIEF - LAND DEVELOPMENT DIVISION - DATE

WHITMAN, REQUARDT AND ASSOCIATES  
 ENGINEERS  
 2315 ST. PAUL ST.  
 BALTIMORE, MARYLAND

CONTRACT NO. 20-1096-D

VICINITY MAP,  
 PLAN AND PROFILE  
 OF A SEWER MAIN

IRVING DASHER  
 SUBDIVISION  
 ELECTION DISTRICT GUILFORD NO. 6

Irving Dasher  
 Subdivision  
 Contract No. 20-1096-D  
**DRAWING NO. 1 OF 1**  
**SCALE AS SHOWN**  
 36 495,846.9  
 36 495,848