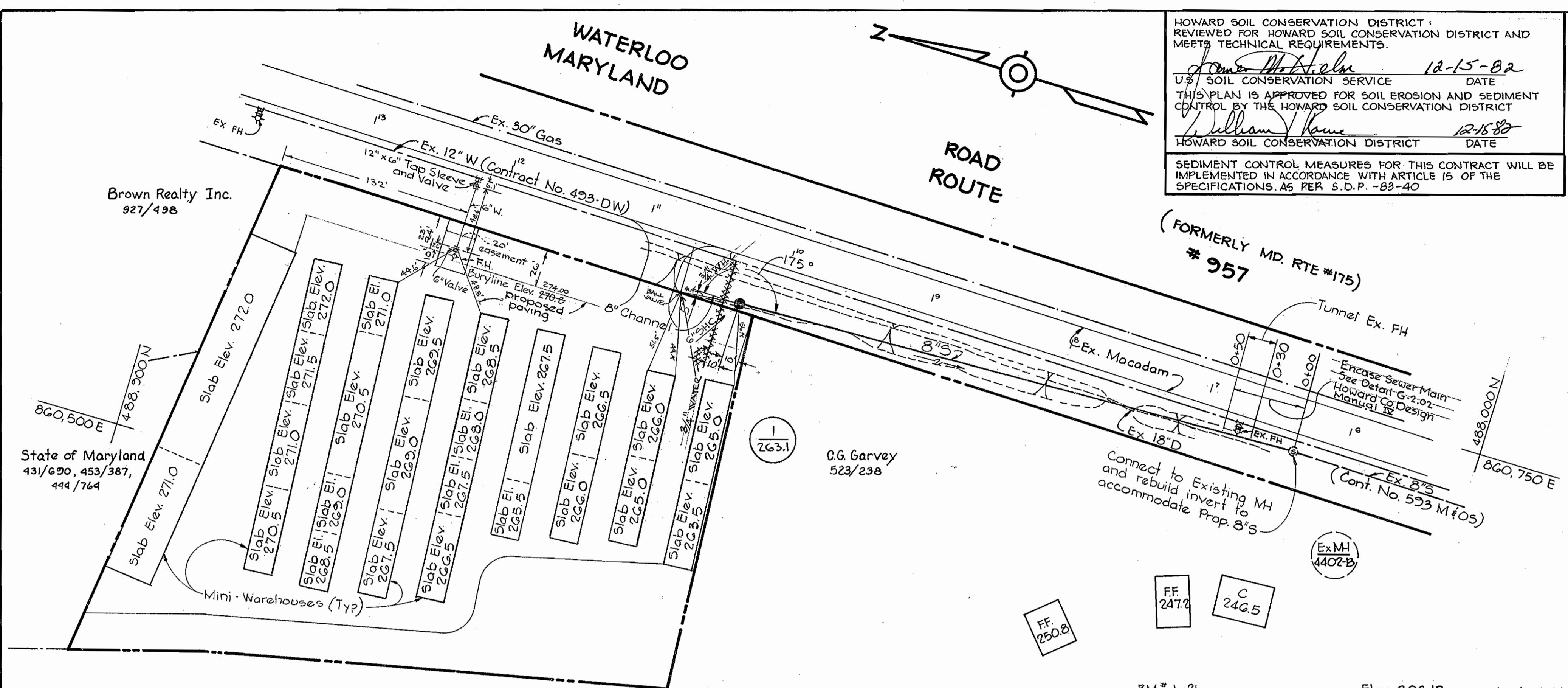
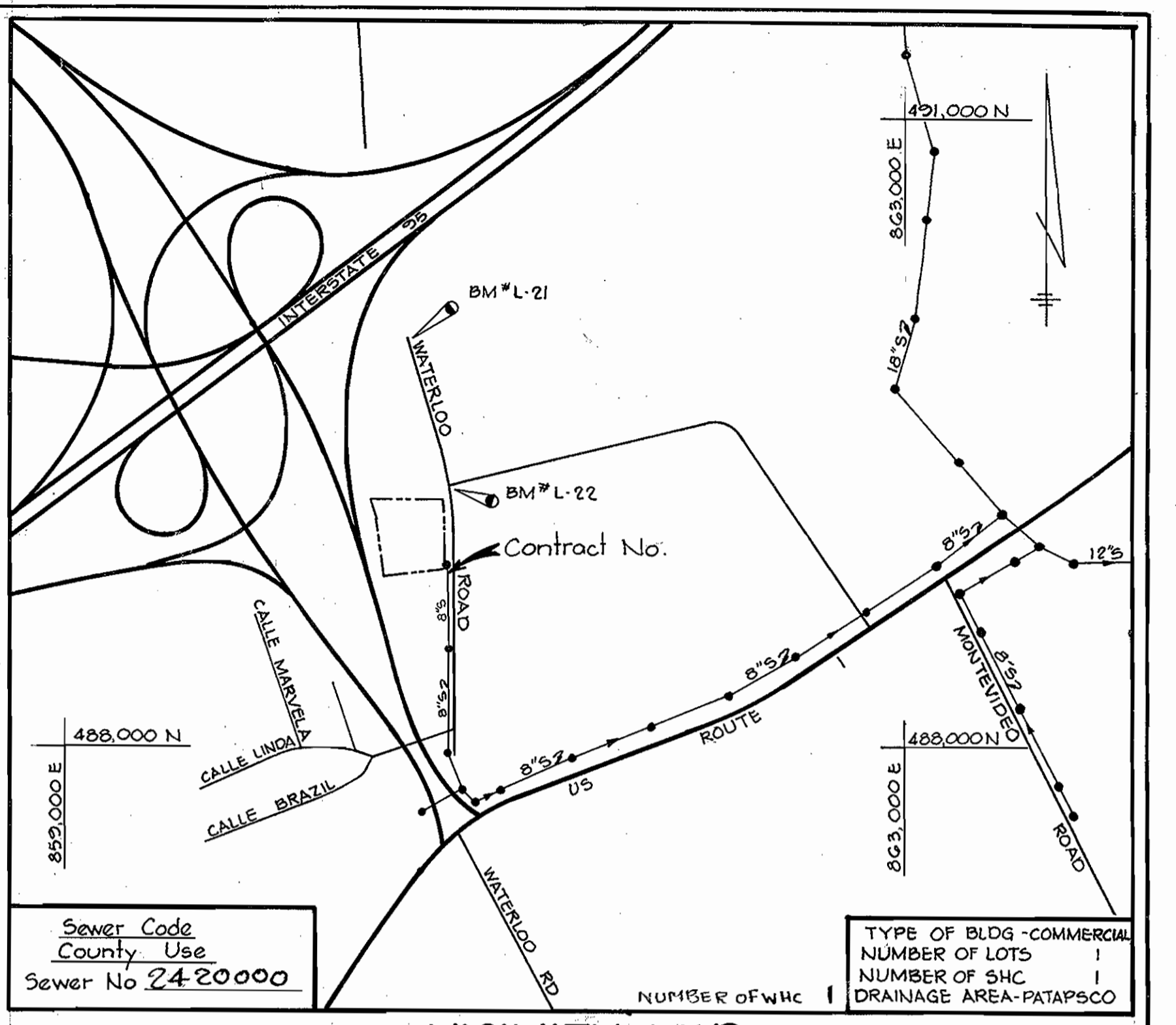


1088/1 S

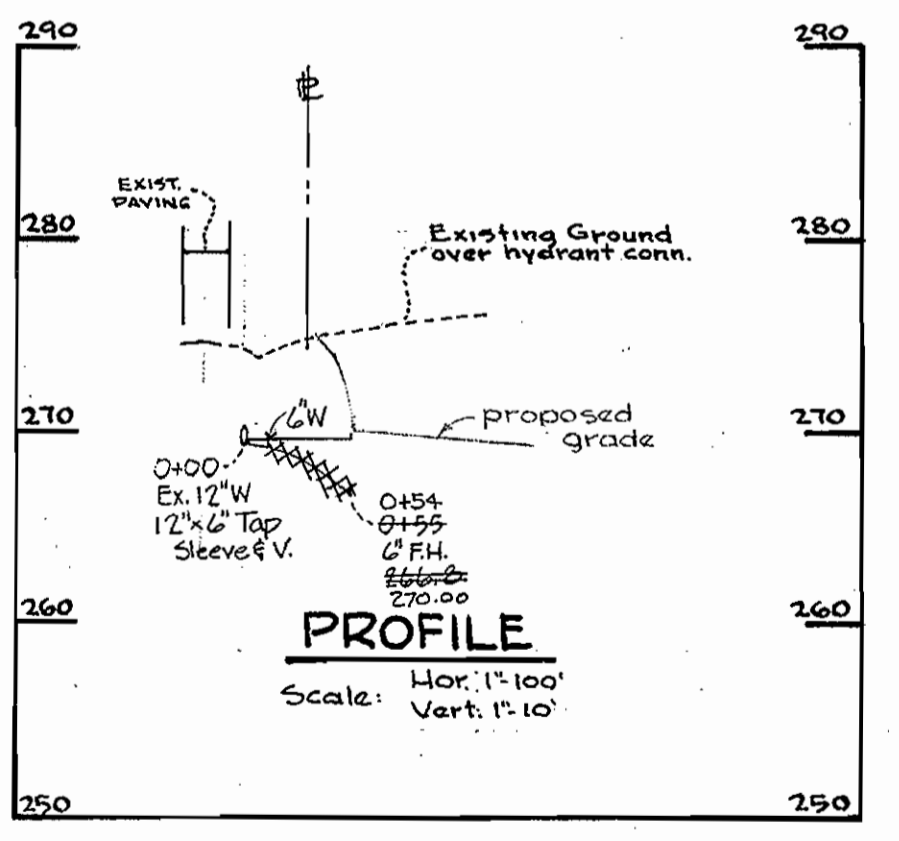
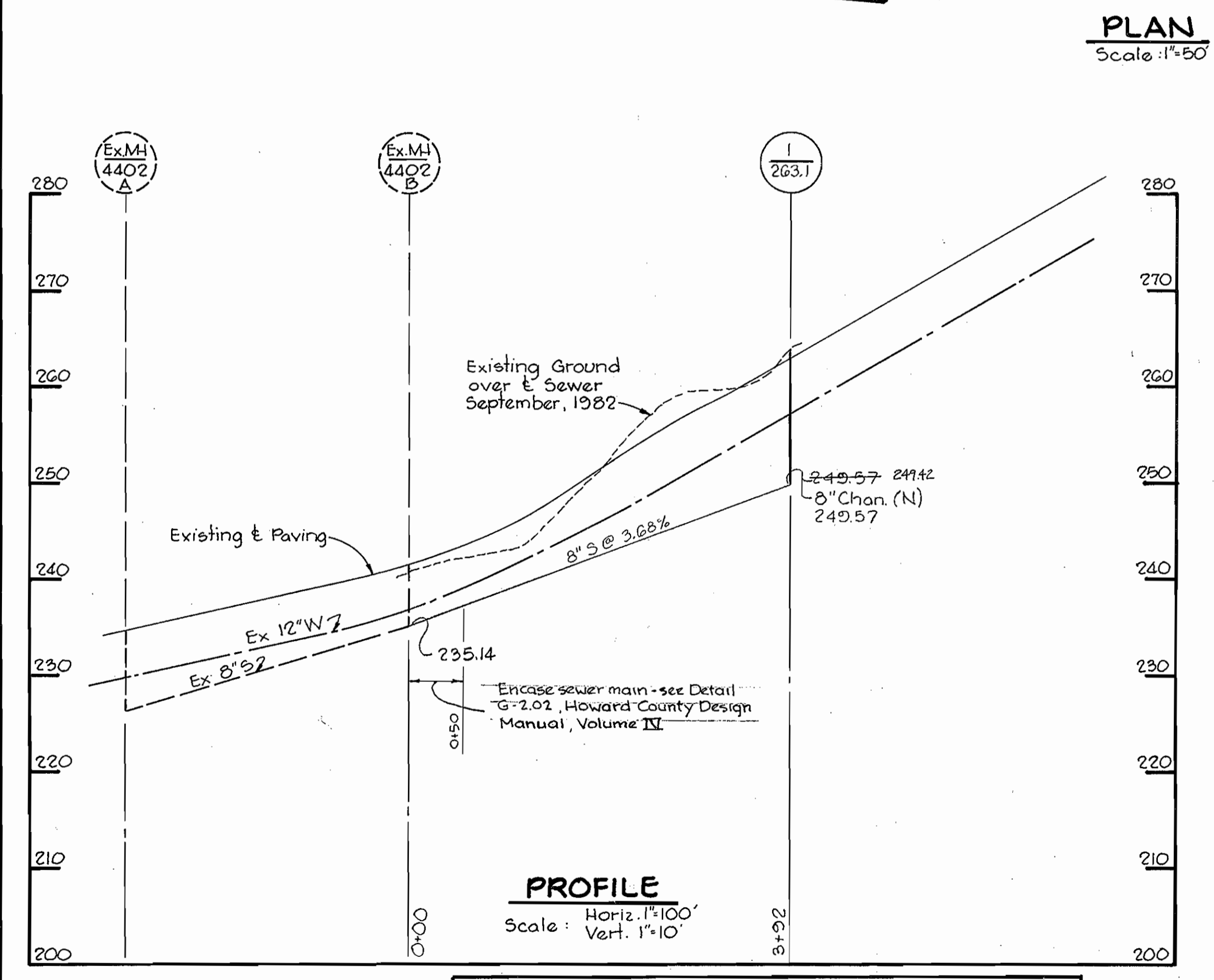


HOWARD SOIL CONSERVATION DISTRICT
 REVIEWED FOR HOWARD SOIL CONSERVATION DISTRICT AND MEETS TECHNICAL REQUIREMENTS.
 DATE 12-15-82
 U.S. SOIL CONSERVATION SERVICE
 THIS PLAN IS APPROVED FOR SOIL EROSION AND SEDIMENT CONTROL BY THE HOWARD SOIL CONSERVATION DISTRICT
 DATE 12-15-82
 HOWARD SOIL CONSERVATION DISTRICT
 SEDIMENT CONTROL MEASURES FOR THIS CONTRACT WILL BE IMPLEMENTED IN ACCORDANCE WITH ARTICLE 15 OF THE SPECIFICATIONS AS PER S.D.P. -83-40



GENERAL NOTES

1. Approximate location of existing mains are shown. The contractor shall take all necessary precautions to protect existing mains and services and maintain uninterrupted supply. Any damage incurred shall be repaired immediately.
2. All horizontal controls are based on Maryland State Coordinates.
3. All vertical controls are based on U.S.G.S. Datum.
4. All pipe elevations shown are invert elevations.
5. Clear all utilities by a minimum of 6". Clear all poles 2'-0" minimum or tunnel as required.
6. For all standard details see standards bound in specifications.
7. Contractor shall locate existing utilities in advance of construction operations in the vicinity of proposed utilities.
8. Contractor shall notify the following utilities or agencies at least five (5) days before starting work shown on these plans:
 State Highway Administration - 531-5533
 Baltimore Gas and Electric Co. - Underground Electric Distribution Engineering "Damage Control" 234-5691
 Baltimore Gas and Electric Co. - Underground Gas Distribution Engineering 559-0100
 Chesapeake and Potomac Telephone Company 725-9976
 American Telephone and Telegraph - Cable Location Division 301-393-3553
 Colonial Pipeline Company 781-4641
9. Trees are to be protected from damage to maximum extent. Trees located within the construction strip are not to be removed or damaged by the contractor.
10. Contractor shall remove trees, stumps and roots along line of excavation as directed by the engineer. Payment for such removal shall be included in the unit price bid for excavation and backfill for water and sewer mains.
11. Place Regulation "Men Working" and warning signs as required to comply with Maryland State Highway Administration Manual of Traffic Control for Highway Construction and Maintenance Operations.
12. All sewer mains shall be CSFP, VC.PX, or ACP Class 2400 unless otherwise noted.
13. The contractor shall provide a joint in all sewer mains within 2'-0" of exterior manhole wall.
14. All manholes shall be 4'-0" inside diameter, unless otherwise noted.
15. All water mains shall be Ductile Iron Pipe.



BM L-21 Elev. 306.12
 Galvanized Spike in pole # 14072G
 BM L-22 Elev. 290.75
 Galvanized Spike in pole # 3069C7

RIEMER-TRACY & ASSOCIATES, INC.
 8659 BALTIMORE NATIONAL PIKE
 ELLICOTT CITY, MARYLAND 21043

DEPARTMENT OF PUBLIC WORKS
 HOWARD COUNTY, MARYLAND
 DATE 12-17-82
 DATE 12-15-82
 DATE 12-17-82

CONTRACT NO. 14-1088-D

PLAN AND PROFILE OF SEWER MAIN

COASTAL MINI-STORAGE WAREHOUSE
 SCHERR PROPERTY, WATERLOO ROAD
 FIRST ELECTION DISTRICT

DRAWING NO. 1 OF 1
 SCALE AS SHOWN
 DATE 10/15/82
 AS-BUILT JULY, 1983

ITEM	ESTIMATED	AS BUILT	MATERIAL/SUPPLIER
6" SEWER		3	VCPX-SUPERIOR CLAY CO.
12"x6" TAPPING SLEEVE		1	FLOW INDUSTRIES
3/4" WATER T BALL VALVE		32	"
6" WATER	55 L.F.	54	C.I.P. BELAIR RD SURRY
FIRE HYDRANT		1	FLOW INDUSTRIES
6" VALVE		2	"

