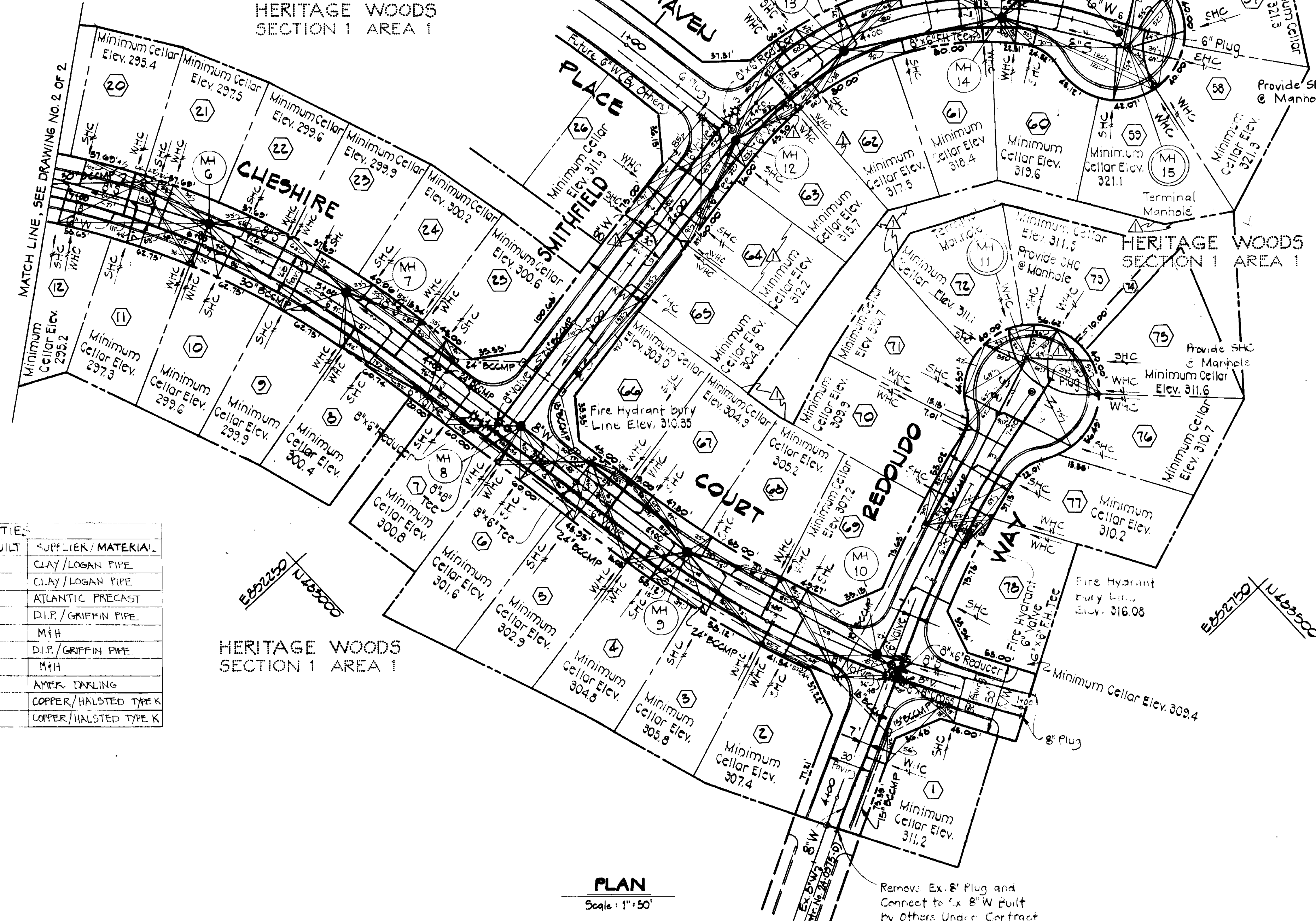


E892150 U423230

HERITAGE WOODS SECTION 1 AREA 1

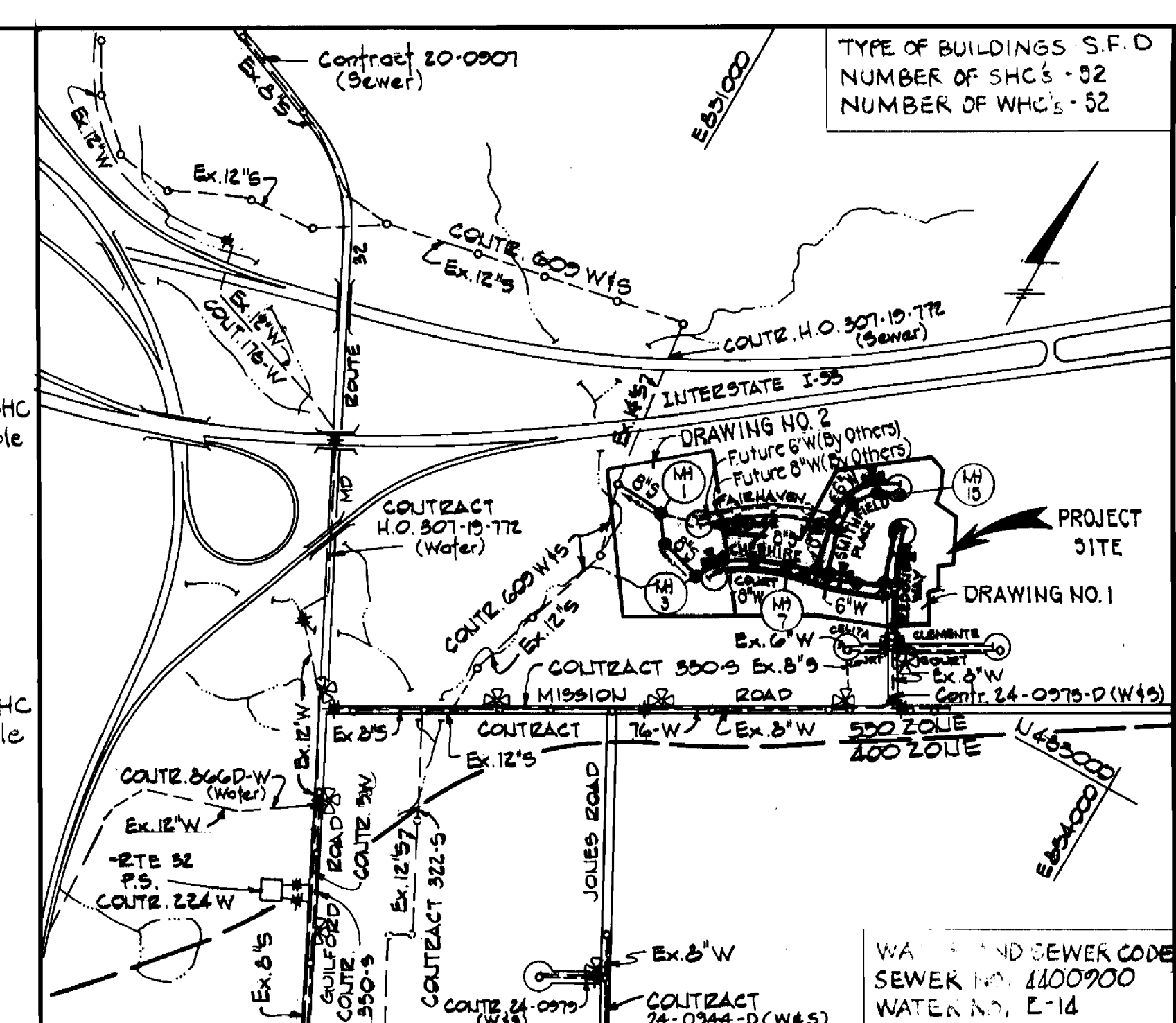


HERITAGE WOODS SECTION 1 AREA 1

PLAN  
Scale: 1" = 50'

QUANTITIES

ITEM	ESTIMATED	AS BUILT	SUPPLIER / MATERIAL
8" S	1105	2326	CLAY/LOGAN PIPE
6" S	1405	1565	CLAY/LOGAN PIPE
Manholes	15	15	ATLANTIC PRECAST
8" W	870	872	D.I.P./GRIFFIN PIPE
8" V	2	2	M.H.
6" W	1040	1131	D.I.P./GRIFFIN PIPE
6" V	8	8	M.H.
Fire Hydrant	4	4	AMER. INSLING
1" W.M.C.	660	506	COPPER/HALSTED TYPE K
3/4" W.M.C.	275	672	COPPER/HALSTED TYPE K



VICINITY MAP  
Scale: 1" = 600'

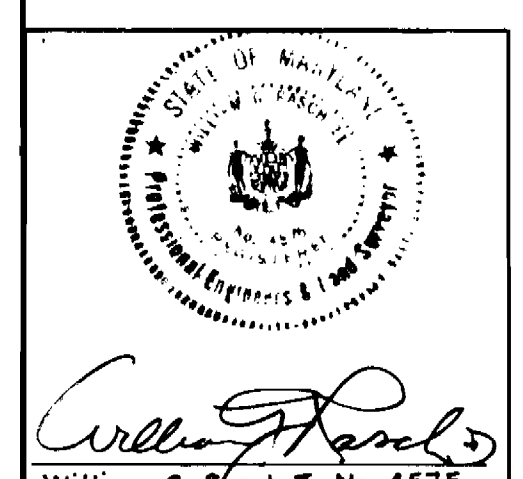
GENERAL NOTES

- The approximate locations of existing mains are shown. The Contractor shall take all necessary precautions to protect existing mains and services and maintain uninterrupted supply. Any damage incurred shall be repaired immediately to the satisfaction of the Engineer at the Contractor's Expense.
- All horizontal controls are based on Maryland State Coordinates.
- All vertical controls are based on U.S.G.S. Datum.
- All pipe elevations shown are invert elevations.
- All utilities shall be cleared by a minimum of 6'. All poles shall be cleared by 2'-0" minimum felled as required. Any cost incurred by the Contractor for felling and bracing at poles shall be included in the unit prices bid for construction of water and sewer mains.
- For materials, construction methods and details not shown on the construction drawings, use Howard County "Standard Specifications and Details for Construction".
- The Contractor shall locate existing utilities a minimum of two (2) weeks in advance of construction operations in the vicinity of proposed utilities at his own expense.
- The Contractor shall notify the following utilities or agencies at least five (5) working days before starting work shown on these plans:  
 State Highway Administration - 531-5533  
 Baltimore Gas and Electric Company - Underground Electric Distribution Customer Service - 685-0123  
 Baltimore Gas and Electric Company - Underground Gas Distribution Customer Service - 685-0123  
 Engineering - "Damage Control" - 235-5621  
 "Miss Utility" - 1-559-0100  
 Chesapeake and Potomac (C&P) Telephone Company - 725-9976  
 American Telephone and Telegraph - Cable Location Division - 593-3533  
 Colonial Pipeline Company - 761-4641  
 Bureau Of Utilities - Howard County - 992-2966
- Trees shall be protected from damage to the maximum extent. Trees located within the construction strips are not to be removed or damaged by the Contractor.
- The Contractor shall remove trees, stumps and roots along the lines of excavation as directed by the Engineer. Payment for such removal shall be included in the unit prices bid for construction of sewers and water mains.
- The Contractor shall place "MEN WORKING" and warning signs as required to comply with Maryland State Highway Administration Manual Of Traffic Control For Highway Construction And Maintenance Operations.
- All water mains shall be C.I.P. or D.I.P. unless otherwise noted.
- The top of all water mains shall have a minimum of 3'-6" cover unless otherwise noted.
- Valves adjacent to trees shall be trapped to trees.
- All fittings shall be blocked with concrete.
- Bury line elevations on fire hydrants shall be set to the elevations shown on the drawings. All fire hydrants shall be trapped and buttressed with concrete in accordance with standard details. Soil around the fire hydrant to be compacted in accordance with Article 51.01-3(15) of the standard specifications.
- All water house connections shall be for an inside meter setting.
- The Contractor shall not operate any water main valve on the existing system.
- All sewer mains shall be C.S.P.X., V.C.P.X., P.V.C. or A.C.P. Class 2400, unless otherwise noted.
- Manholes shown with 12" and 16" walls are brick manholes only.
- The Contractor shall provide a joint in all sewer mains within 2'-0" of all exterior manhole walls.

Erosion and sediment control measures shall be in accordance with these drawings, final road drawings F-83-05 and Article 15 of the Howard County Design Manual, Vol. IX.

Reviewed For Howard Soil Conservation District And Meets Technical Requirements.  
*James M. Miller* 9-27-82  
 Signature Date  
 This Development Plan Is Approved For Soil Erosion And Sediment Control By The Howard Soil Conservation District.  
*Wm. J. Damm* 9-27-82  
 Approved Date  
 Howard Soil Conservation District

CONTRACT NO. 24-1076D  
 HERITAGE WOODS, SECTION 1, AREA 1.  
 LOTS 1 THROUGH 26 AND  
 LOTS 51 THROUGH 78, PHASE I  
 WATER AND SEWER MAINS



DEPARTMENT OF PUBLIC WORKS  
 HOWARD COUNTY, MARYLAND  
 Robert M. Baugher, Jr. GEN. DIRECTOR OF PUBLIC WORKS  
 Robert M. Baugher, Jr. CHIEF BUREAU OF UTILITIES  
 9-28-82 DATE  
 Chief Bureau of Engineering DATE  
 Chief Land Development DATE

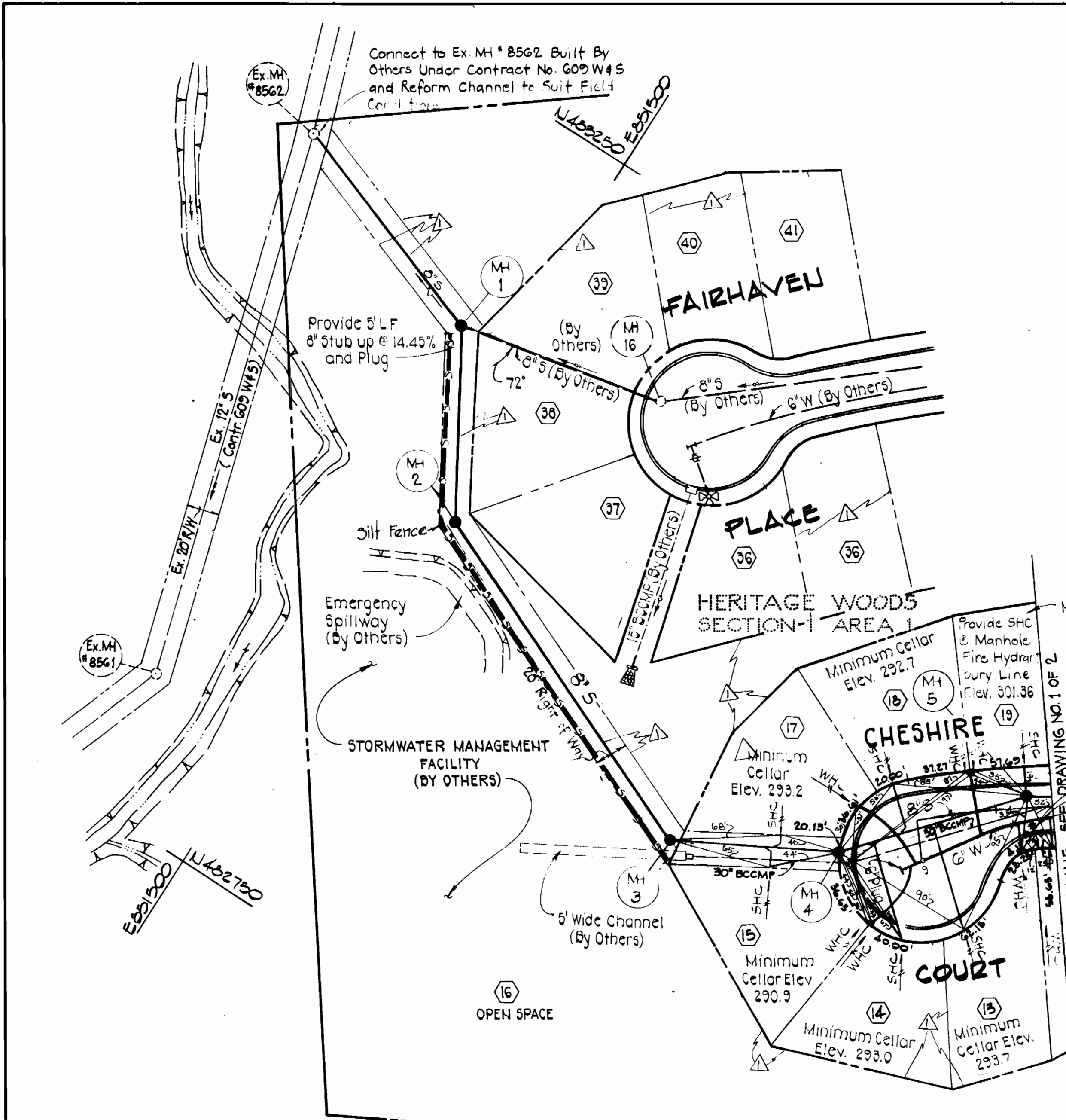
PURDUM & JESCHKE  
 ENGINEERS  
 1023 N. CALVERT ST.  
 BALTIMORE, MARYLAND

CONTRACT NO. 24-1076D

VICINITY MAP AND  
 PLAN OF WATER & SEWER MAINS

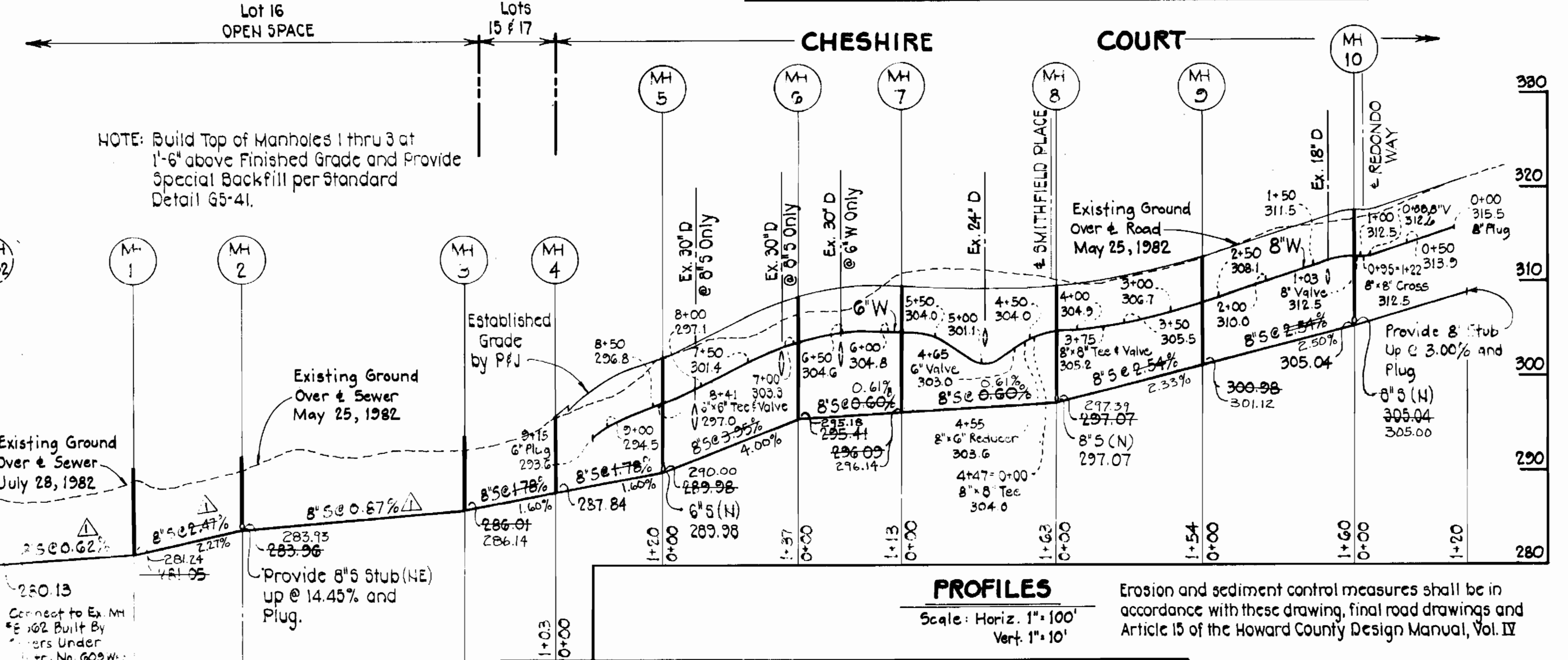
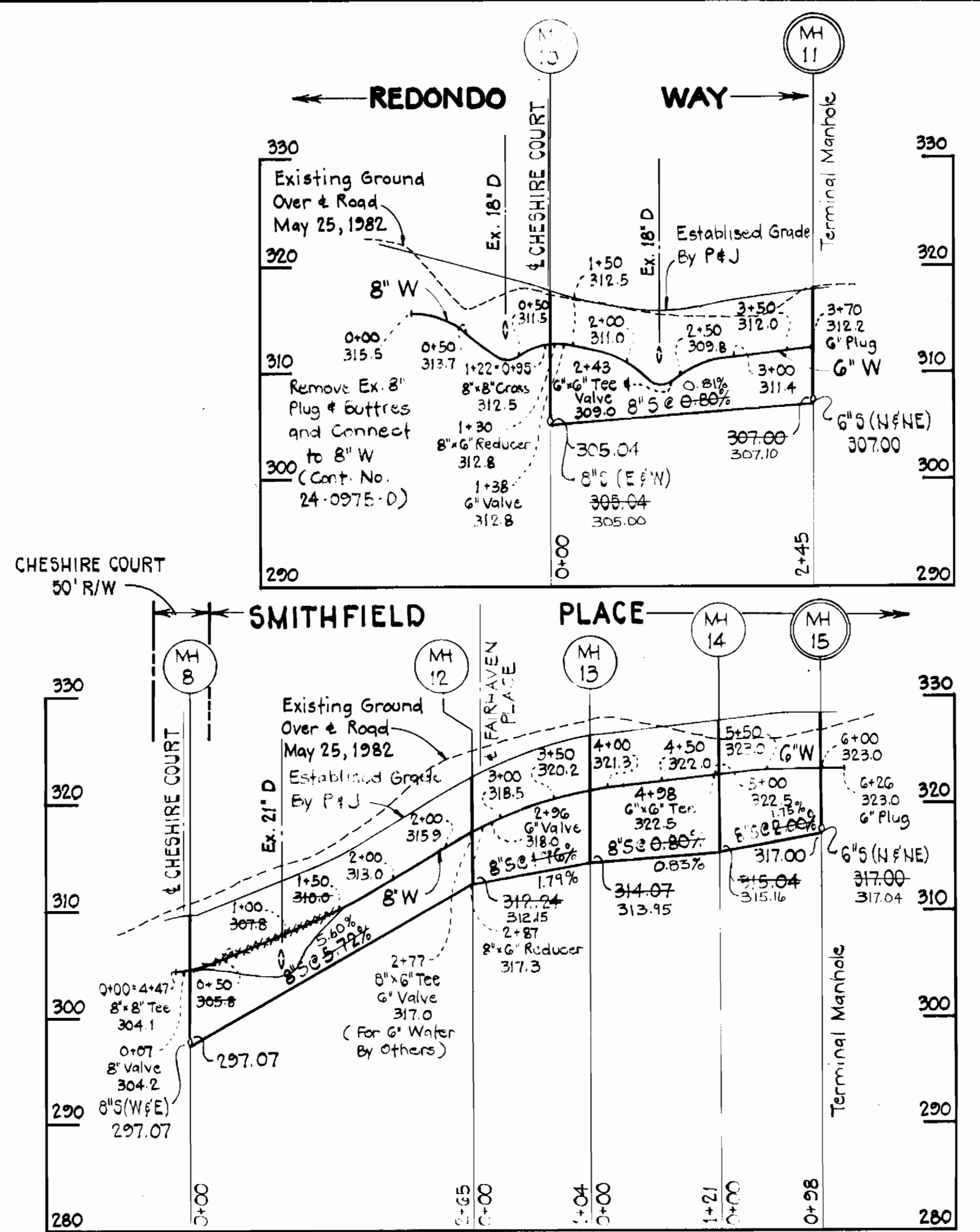
HERITAGE WOODS  
 SECTION 1 AREA 1  
 WATER AND SEWER MAINS PHASE I  
 6TH ELECTION DISTRICT  
 HOWARD COUNTY, MARYLAND

DESIGNED: REP  
 DRAFTED: RAZ  
 CHECKED: REP



**MANHOLE LOCATION SCHEDULE**

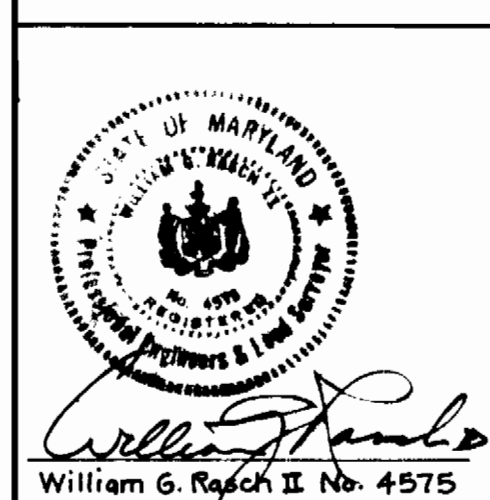
NO.	ROAD & STA.	OFFSET	TOP ELEV.	ROAD GRADE
4	—	—	296.45	—
5	—	—	301.80	-6.67%
6	5+96	10'	307.91	-3.20%
7	4+86	10'	309.42	+0.47%
8	0+07	7'	309.52	+4.00%
9	1+71	6'	312.21	-2.87%
10	0+03	4'	317.36	-2.72%
11	—	—	316.95	+0.70%
12	2+70	7'	322.11	+5.05%
13	3+76	7'	325.74	+1.87%
14	4+90	7'	327.59	+1.00%
15	—	—	328.55	0.00%



NOTE: Build Top of Manholes 1 thru 3 at 1'-6" above Finished Grade and Provide Special Backfill per Standard Detail 65-41.

**PROFILES**  
Scale: Horiz. 1" = 100'  
Vert. 1" = 10'

Erosion and sediment control measures shall be in accordance with these drawing, final road drawings and Article 15 of the Howard County Design Manual, Vol. IV



**DEPARTMENT OF PUBLIC WORKS**  
HOWARD COUNTY, MARYLAND

Robert M. Beinger, G.E.N. 10-1-82, Director of Public Works  
 Robert M. Beinger, G.E.N. 9-28-82, Chief Bureau of Utilities  
 William G. Reisch II, No. 4575, Chief Bureau of Engineering  
 Chief Land Development

**PURDUM & JESCHKE**  
ENGINEERS  
1023 N. CALVERT ST.  
BALTIMORE, MARYLAND

CONTRACT NO. 24-1076D

**PLAN & PROFILES**  
OF  
WATER & SEWER MAINS

**HERITAGE WOODS**  
SECTION I AREA I  
WATER AND SEWER MAINS PHASE I  
6TH ELECTION DISTRICT  
HOWARD COUNTY, MARYLAND

CONTRACT NO. 24-1076D  
HERITAGE WOODS, SECTION I, AREA I  
LOTS 1 THROUGH 26 AND  
LOTS 51 THROUGH 78, PHASE I  
WATER AND SEWER MAINS

DRAWING NO. 2 OF 2 SCALE AS SHOWN

Designed: REP  
Drafted: RAZ  
Checked: REP