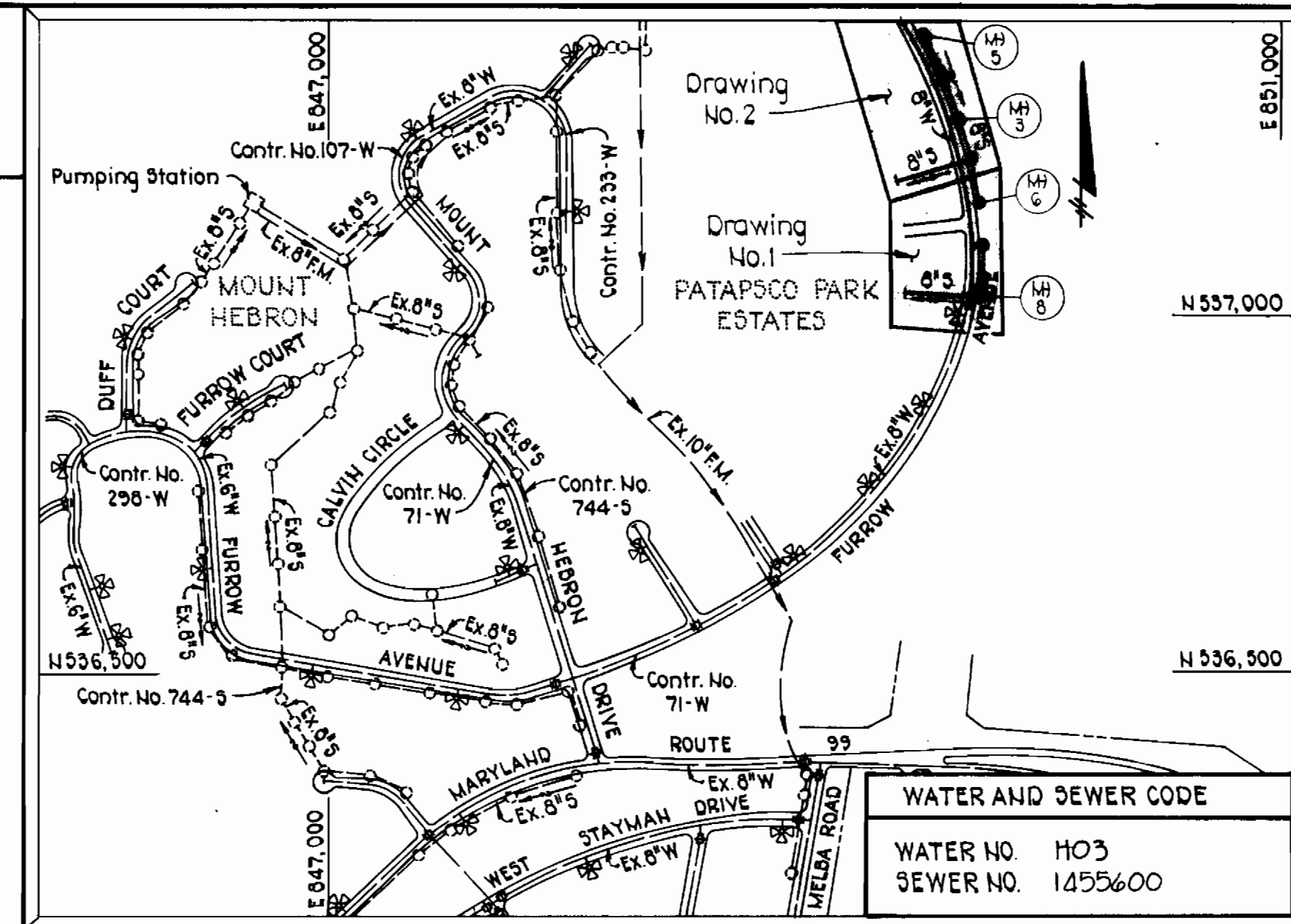


Note:
The sewer main constructed under this contract will not be placed in service until future sewer contract is constructed. Houses constructed initially will be connected to a septic system.

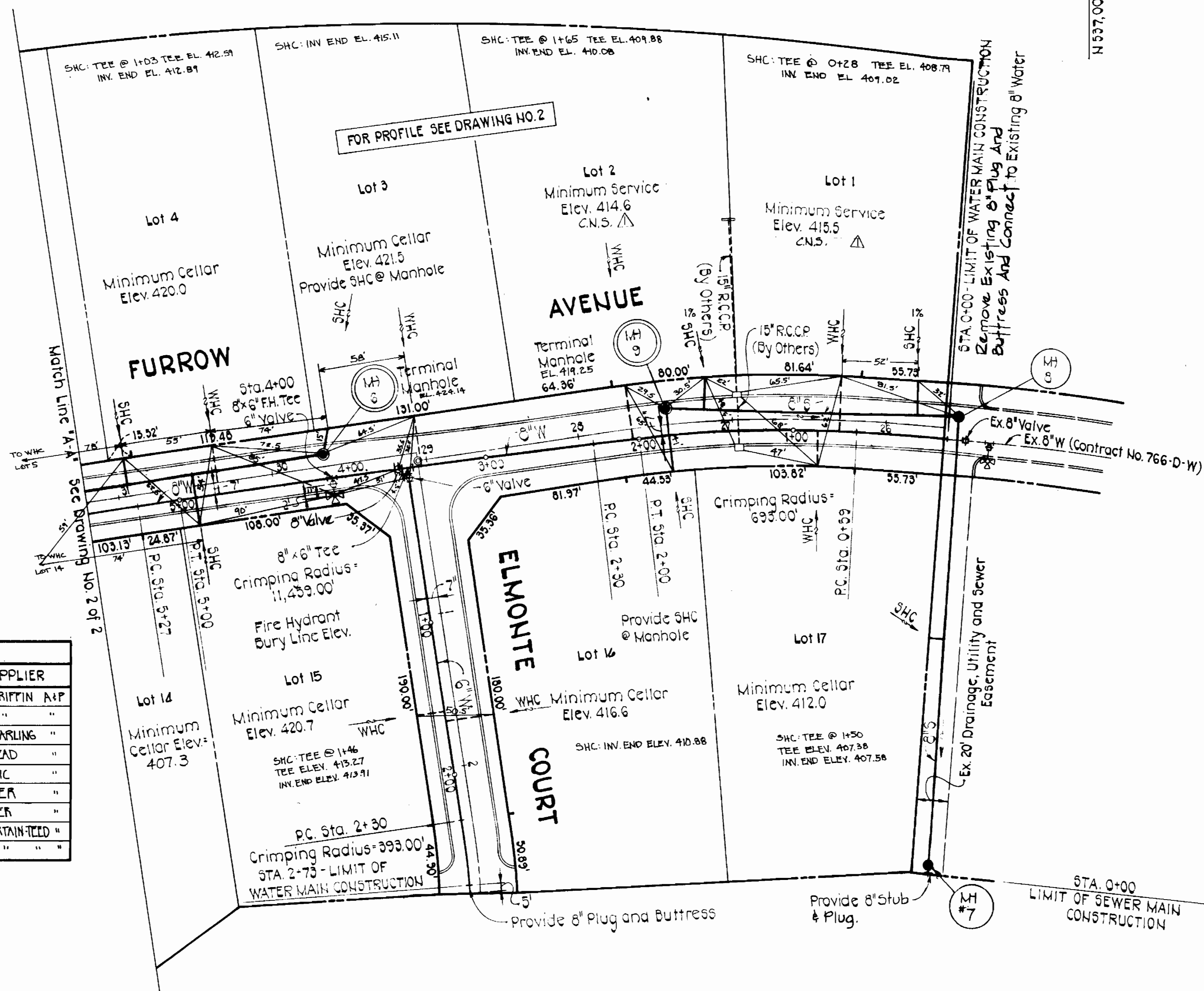
NO. OF LOTS - 17
TYPE OF BUILDING - RESIDENTIAL
NO. OF WHC'S - 17
NO. OF SHC'S - 17
DRAINAGE AREA -



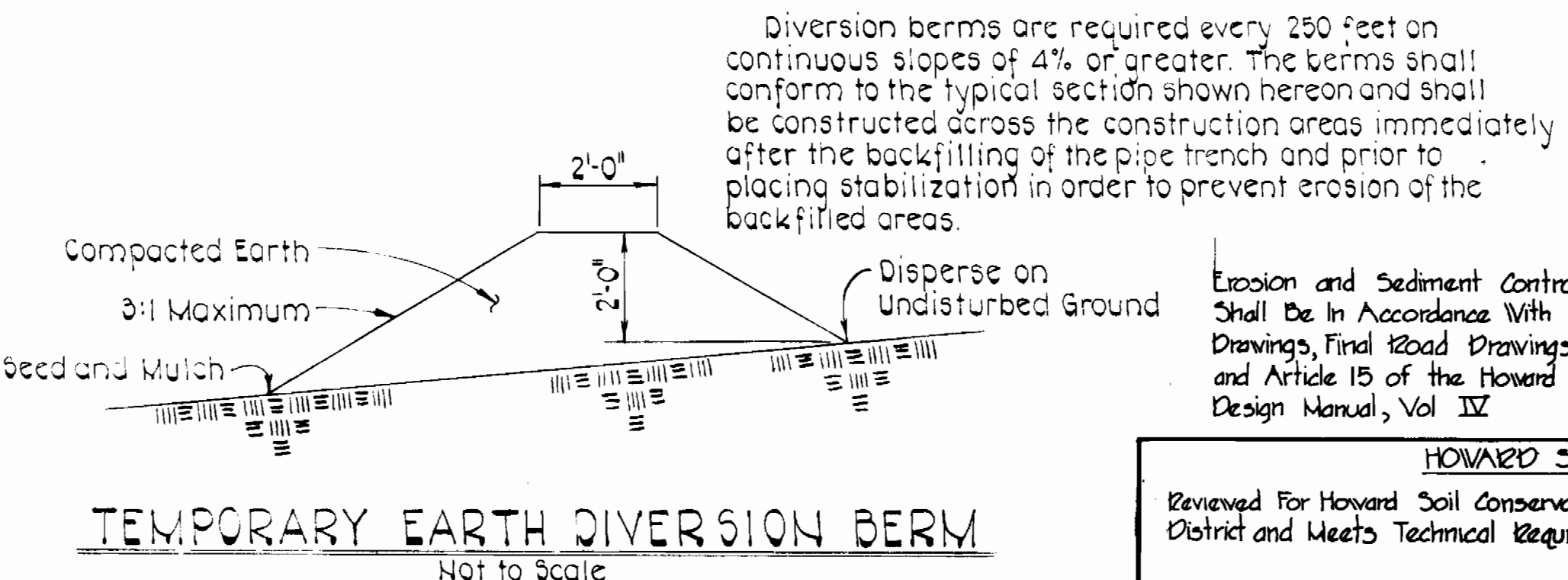
VICINITY MAP
SCALE: 1"=600'

GENERAL NOTES

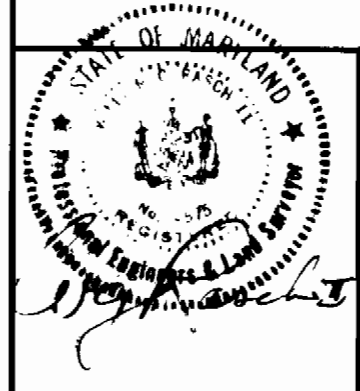
- The approximate locations of existing mains are shown. The contractor shall take all necessary precautions to protect existing mains and services and maintain uninterrupted supply. Any damage incurred shall be repaired immediately to the satisfaction of the Engineer at the Contractor's expense.
- All horizontal controls are based on Maryland State Coordinates.
- All vertical controls are based on U.S.G.S. Datum.
- All pipe elevations shown are invert elevations.
- All utilities shall be cleared by a minimum of 6". All poles shall be cleared by 2'-0" minimum or tunneled as required. Any cost incurred by the Contractor for tunneling or bracing at poles shall be included in unit prices bid for excavation and backfill.
- For details not shown on the drawings use Howard County Standard Details.
- For materials and construction methods use Howard County Standard Specifications.
- The Contractor shall locate existing utilities a minimum of two (2) weeks in advance of construction operations in the vicinity of proposed utilities at his expense.
- The Contractor shall notify the following utilities or agencies at least five (5) working days before starting work shown on these plans:
 - Baltimore Gas & Electric Company - Underground Electric Distribution Customer Service - 685-0123
 - Baltimore Gas & Electric Company - Underground Gas Distribution Customer Service - 685-0123
 - Engineering - "Damage Control" - 234-5621
 - "Miss Utility" - 1-559-0100
 - Chesapeake & Potomac (C&P) Telephone Company - 725-9976
 - Bureau of Utilities - Howard County - 992-2366
- Trees shall be protected from damage to the maximum extent. Trees located within the construction strips shall not be removed or damaged by the Contractor.
- The Contractor shall remove trees, stumps and roots along the line of excavation as directed by the Engineer. Payment for such removal shall be included in the unit prices bid for excavation and backfill.
- The Contractor shall place regulation "Men Working" and warning signs as required to comply with Maryland State Highway Administration Manual of Traffic Control for Highway Construction and Maintenance Operations.
- All water mains shall be C.I.P. or D.I.P. unless otherwise noted.
- The top of all water mains shall have a minimum of 3'-1/2' cover unless otherwise noted.
- All valves adjacent to tees shall be strapped to the tees.
- All fittings shall be blocked with concrete.
- Bury line elevations on fire hydrants shall be set to the elevations shown on the drawings. All fire hydrants shall be strapped and buttressed with concrete in accordance with the Standard Details. Soil around fire hydrants shall be compacted in accordance with Section 5-15 of the Standard Specifications.
- All water house connections shall be for inside meter settings.
- The contractor shall not operate any water main valves on the existing system.
- All sewer mains shall be C.S.P.X., V.C.P.X., P.V.C. or A.C.P. Class 2400 unless otherwise noted.
- The Contractor shall provide a joint in all sewer mains within 2'-0" of the exterior manhole walls.
- All manholes shall be 4'-0" inside diameter, unless otherwise noted.
- Manholes shown with 12" and 16" walls are brick manholes only.
- Manholes designated W.T. in plan and profile shall have watertight frame and covers, Standard Detail S-42 (RCR-63A). Where watertight manhole frames and covers are used, set top of frames 1'-6" above finished grade.
- House(s) with the symbol "C.N.S." indicates that the cellar can not be served.



QUANTITIES			
ITEM	ESTIMATED	AS-BUILT	SUPPLIER
8" Water	1335 L.F.	1355 L.F.	D.I.P. GRIFFIN A&P
6" Water	276 L.F.	305 L.F.	" " "
Fire Hydrants	3 Each	3 EACH	AMER. DARLINS "
3/4" WHC	430 L.F.	523 L.F.	HALSTEAD "
Manholes	9 Each	9 EACH	ATLANTIC "
8" Valves	1 Each	2 EACH	MUELLEK "
6" Valves	4 Each	4 EACH	MUELLEK "
8" Sewer	1670 L.F.	1700 L.F.	P.V.C. CERTAINTEED "
6" Sewer	435 L.F.	362 L.F.	" " "



HOWARD SOIL CONSERVATION DISTRICT
Reviewed For Howard Soil Conservation District and Meets Technical Requirements
This Development Plan is Approved For Soil Erosion and Sediment Control by the Howard Soil Conservation District.
Signature: *William T. Rowe* Date: 9/16/82
Approved: *William T. Rowe* Date: 9/16/82
Howard Soil Conservation District



DEPARTMENT OF PUBLIC WORKS
HOWARD COUNTY, MARYLAND
Director of Public Works: *Mark F. Nunn* DATE: 9/22/82
Chief Bureau of Engineering: *William J. Brown* DATE: 9/22/82
Chief Bureau of Utilities: *Robert Brainer* DATE: 9-20-82
Chief Land Development Division: *William J. Brown* DATE: 9-21-82

PURDUM & JESCHKE
ENGINEERS
1023 N. CALVERT ST.
BALTIMORE, MARYLAND

CONTRACT NO. 14-1072-D

PLAN OF
WATER AND SEWER MAINS

PATAPSCO PARK ESTATES - SECTION 3-AREA 1
ELECTION DISTRICT NO. 2
HOWARD COUNTY, MARYLAND

CONTRACT NO. 14-1072-D
PATAPSCO PARK ESTATES
SECTION 3 - AREA 1
WATER AND SEWER MAINS
DRAWING NO. 1 OF 2
SCALE 1"=50'

