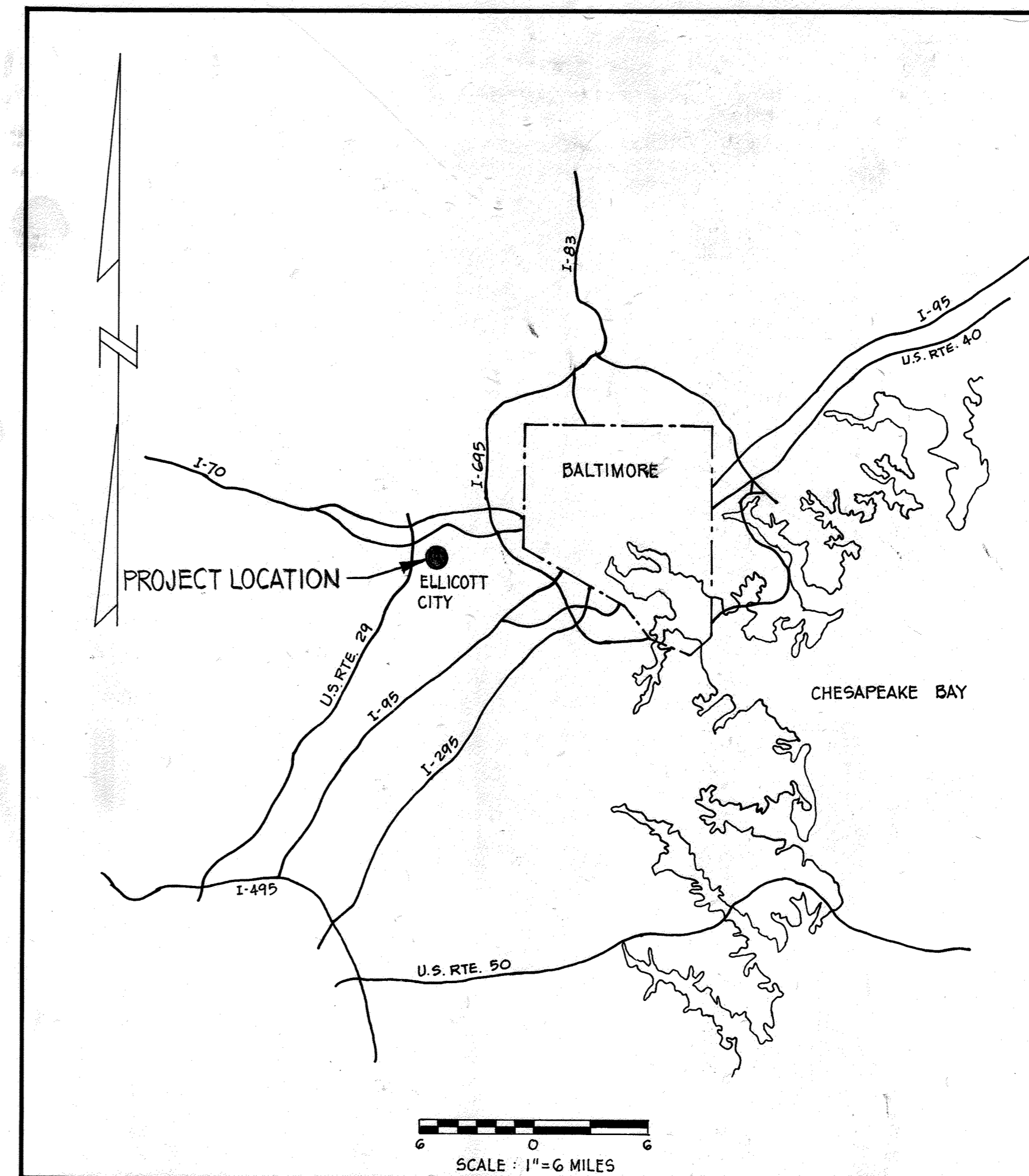


VICINITY MAP



LOCATION MAP

AS BUILT
OCTOBER 1985

REVIEWED FOR HOWARD COUNTY S.C.D. AND MEETS TECHNICAL REQUIREMENTS.

James M. Helms DATE: 8-8-83
U.S. SOIL CONSERVATION SERVICE

THIS DEVELOPMENT PLAN IS APPROVED FOR SOIL EROSION AND SEDIMENT CONTROL BY THE HOWARD COUNTY SOIL CONSERVATION DISTRICT.

APPROVED: *Don T. Rome* DATE: 8-8-83
HOWARD COUNTY S.C.D.

ENGINEER'S CERTIFICATION

I CERTIFY THAT THIS PLAN FOR EROSION & SEDIMENT CONTROL REPRESENTS A PRACTICAL AND WORKABLE PLAN BASED ON MY PERSONAL KNOWLEDGE OF THE SITE CONDITIONS AND THAT IT WAS PREPARED IN ACCORDANCE WITH THE REQUIREMENTS OF THE HOWARD COUNTY SOIL CONSERVATION DISTRICT.

Thomas J. Galy DATE: May 17, 1983

DEVELOPER'S CERTIFICATION

"I/WE CERTIFY THAT ALL DEVELOPMENT AND CONSTRUCTION WILL BE DONE ACCORDING TO THIS PLAN, AND THAT ANY RESPONSIBLE PERSONNEL INVOLVED IN THE CONSTRUCTION PROJECT WILL HAVE A CERTIFICATE OF ATTENDANCE AT A DEPARTMENT OF NATURAL RESOURCES APPROVED TRAINING PROGRAM FOR THE CONTROL OF SEDIMENT AND EROSION BEFORE BEGINNING THE PROJECT."

William E. Riley
BUREAU OF ENGINEERING
DEPARTMENT OF PUBLIC WORKS

CONTRACT NO. 44-1071
PROJECT NO. W-8126

ELLICOTT CITY
WATER IMPROVEMENTS
HOWARD COUNTY, MARYLAND
DEPARTMENT OF PUBLIC WORKS

QUANTITIES			
ITEMS	BID	AS-BUILT	MATERIAL / SUPPLIER
8" WATER	900 Lf.	906.7	D.I.P. CI. 52/ATLANTA STATES
6" WATER	1690 Lf.	1,754.67	D.I.P. CI. 52/ATLANTA STATES
Fire Hydrants	5 EA.	5.0	DRESSER/FLOW INDUSTRIES, INC.
PRV Vault	1 EA.	1.0	GOLDEN ANDERSON/FLOW IND. INC.
2" WATER	345 Lf.	342.0	TYPE K/FLOW INDUSTRIES, INC.
8" Valve	4 EA.	4.0	DRESSER/FLOW INDUSTRIES, INC.
6" Valve	10 EA.	10.0	DRESSER/FLOW INDUSTRIES, INC.
6"x6" TS & V	3 EA.	3.0	CLOW/FLOW INDUSTRIES, INC.
12"x6" TS & V	2 EA.	2.0	CLOW/FLOW INDUSTRIES, INC.
W H C	400 Lf.	352.5	TYPE K/FLOW INDUSTRIES, INC.



Thomas J. Galy
ELLICOTT CITY WATER IMPROVEMENTS
PROJECT NO. W-8126
CONTRACT NO. 44-1071

DEPARTMENT OF PUBLIC WORKS
HOWARD COUNTY, MARYLAND
William E. Riley 8/8/83
DIRECTOR OF PUBLIC WORKS - DATE
Allen S. Brown 8/8/83
CHIEF - BUREAU OF UTILITIES - DATE

HAYES, SEAY, MATTERN & MATTERN
ARCHITECTS - ENGINEERS - PLANNERS

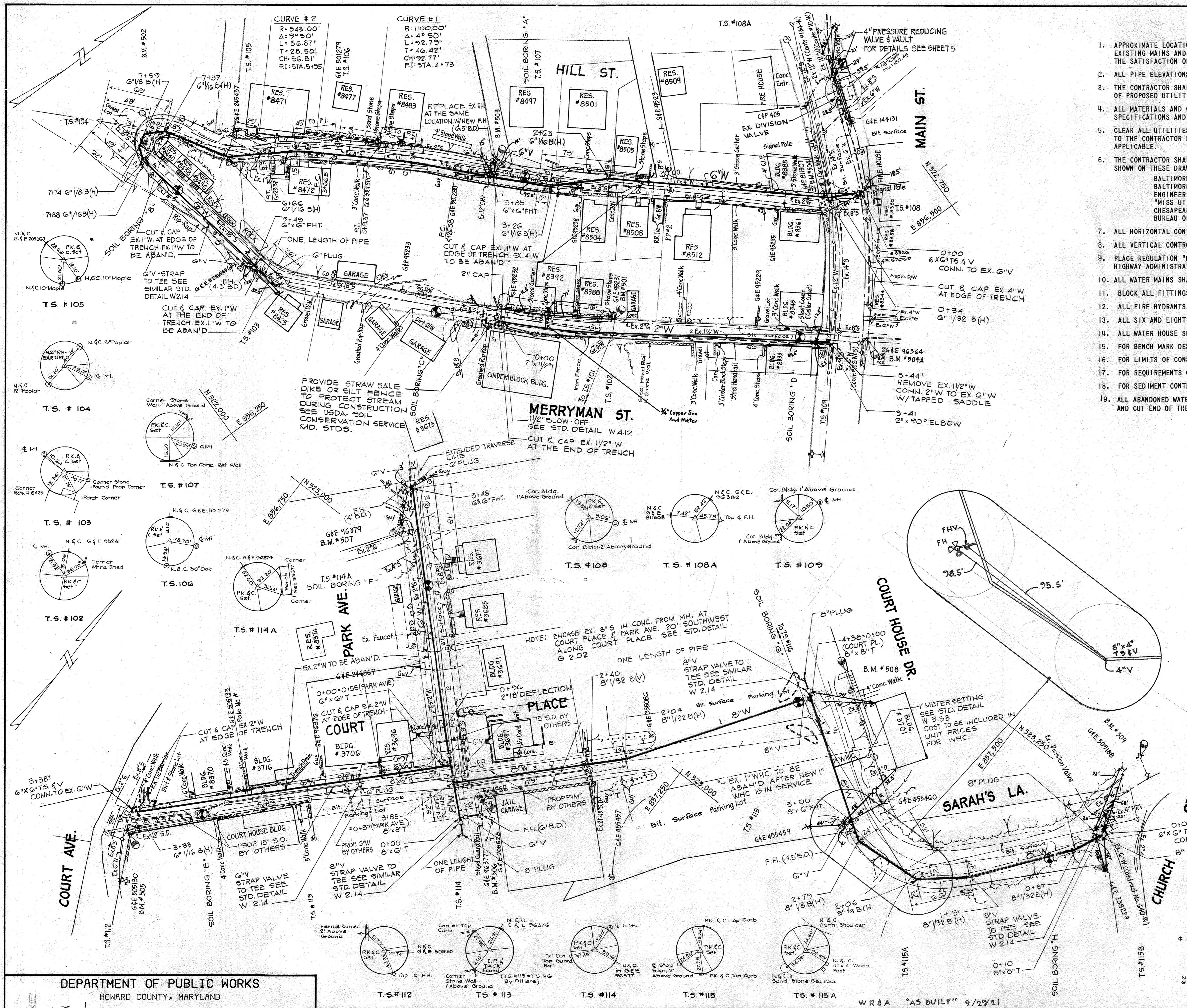
CONTRACT NO. 44-1071
PROJECT NO. W-8126

LOCATION MAP

ELLICOTT CITY WATER IMPROVEMENTS

ELECTION DISTRICT
ELLICOTT CITY NO. 2

DRAWING NO. 1 OF 6
SCALE: AS SHOWN
DATE MAY 16, 1985
COMM. NO. 4106



GENERAL NOTES

- APPROXIMATE LOCATIONS OF EXISTING UTILITIES ARE SHOWN. THE CONTRACTORS SHALL TAKE ALL NECESSARY PRECAUTIONS TO PROTECT EXISTING MAINS AND SERVICES AND MAINTAIN UNINTERRUPTED SUPPLY. ANY DAMAGE INCURRED SHALL BE REPAIRED IMMEDIATELY TO THE SATISFACTION OF THE ENGINEER AT THE CONTRACTORS EXPENSE.
- ALL PIPE ELEVATIONS SHOWN ARE INVERT ELEVATIONS, UNLESS OTHERWISE INDICATED.
- THE CONTRACTOR SHALL LOCATE EXISTING UTILITIES A MINIMUM OF TWO WEEKS IN ADVANCE OF CONSTRUCTION OPERATIONS IN VICINITY OF PROPOSED UTILITIES AT HIS OWN EXPENSE, ANY CONFLICTS SHALL BE IMMEDIATELY REPORTED TO THE ENGINEER.
- ALL MATERIALS AND CONSTRUCTION SHALL BE PERFORMED IN ACCORDANCE WITH THE HOWARD COUNTY DESIGN MANUAL, VOLUME IV, STANDARD SPECIFICATIONS AND DETAILS FOR CONSTRUCTION.
- CLEAR ALL UTILITIES BY A MINIMUM OF 6 INCHES. CLEAR ALL POLES BY 2'-0" MIN. OR TUNNEL, AS REQUIRED ANY COSTS INCURRED TO THE CONTRACTOR FOR TUNNELING OR BRACING AT POLES SHALL BE INCLUDED IN THE UNIT PRICES BID FOR PIPE INSTALLATION AS APPLICABLE.
- THE CONTRACTOR SHALL NOTIFY THE FOLLOWING UTILITIES OR AGENCIES AT LEAST FIVE (5) WORKING DAYS BEFORE STARTING WORK SHOWN ON THESE DRAWINGS.
 - BALTIMORE GAS & ELECTRIC - UNDERGROUND ELECTRIC DIVISION CUSTOMER SERVICE (685-0123)
 - BALTIMORE GAS & ELECTRIC - UNDERGROUND GAS DIVISION CUSTOMER SERVICE (685-0123)
 - ENGINEERING - "DAMAGE CONTROL" (234-5621)
 - "MISS UTILITY" (1-559-0100)
 - CHESAPEAKE & POTOMAC (C&P) TELEPHONE (725-9976)
 - BUREAU OF UTILITIES, HOWARD COUNTY (992-2366)
- ALL HORIZONTAL CONTROLS ARE BASED IN MARYLAND STATE DATUM.
- ALL VERTICAL CONTROLS ARE BASED ON U.S.G.S. DATUM.
- PLACE REGULATION "MEN WORKING" AND WARNING SIGNS AS WELL AS OTHER REQUIREMENTS NECESSARY TO COMPLY WITH MARYLAND STATE HIGHWAY ADMINISTRATION MANUAL OF TRAFFIC CONTROL FOR HIGHWAY CONSTRUCTION & MAINTENANCE OPERATIONS.
- ALL WATER MAINS SHALL HAVE A MINIMUM OF 3-1/2 FEET COVER UNLESS OTHERWISE NOTED.
- BLOCK ALL FITTINGS WITH CONCRETE, EXCEPT AS OTHERWISE NOTED, SEE STANDARD SPECIFICATIONS.
- ALL FIRE HYDRANTS SHALL BE STRAPPED TO THE TEE AND SHALL BE BUTTRESSED WITH CONCRETE IN ACCORDANCE WITH STANDARD DETAILS.
- ALL SIX AND EIGHT INCH WATER MAINS SHALL BE DUCTILE IRON CLASS 52.
- ALL WATER HOUSE SERVICES 3/4-INCH THROUGH 2-INCH SHALL BE COPPER TUBING, SEE STANDARD SPECIFICATIONS.
- FOR BENCH MARK DESCRIPTION AND ELEVATIONS SEE SHEET 3.
- FOR LIMITS OF CONSTRUCTION IN EXISTING TRENCHES SEE PROFILES.
- FOR REQUIREMENTS OF TEMPORARY PAVING, SEE PROFILES AND SECTION 40.32 OF THE SPECIFICATIONS.
- FOR SEDIMENT CONTROL THE CONTRACTOR SHALL COMPLY WITH THE PROVISIONS OF ARTICLE 15 OF THE STANDARD SPECIFICATIONS.
- ALL ABANDONED WATER MAINS SHALL BE CAPPED WITH A MINIMUM OF 3 INCHES OF CONCRETE AROUND THE CIRCUMFERENCE AND CUT END OF THE MAIN AND EXTENDING A MINIMUM OF 1 FOOT ALONG THE MAIN.

ABBREVIATIONS

ABAND'D	ABANDONED	R	REDUCER
BIT.	BITUMINOUS	SHC	SEWER HOUSE CONNECTION
B(D)	BURY DEPTH (Fire Hydrants)	STD	STANDARD
B(H)	BEND HORIZONTAL	T	TEE
B(V)	BEND VERTICAL	T.S.	TRAVERSE STATION
EX.	EXISTING	T.S. & V.	TAPPING SLEEVE & VALVE
F.H.	FIRE HYDRANT	V	VALVE
F.H.T.	FIRE HYDRANT TEE	W	WATER
PROP.	PROPOSED	WHC	WATER HOUSE CONNECTION
PRV.	PRESSURE REDUCING VALVE		



ELLIOTT CITY WATER IMPROVEMENTS
PROJECT NO. W-8126
CONTRACT NO. 44-1071

DEPARTMENT OF PUBLIC WORKS
HOWARD COUNTY, MARYLAND
 Director: *Frank F. Neman* 8-9-83
 Chief - Bureau of Engineering: *William J. Brown* 8/1/83
 Chief - Bureau of Utilities: *Allen J. Brown* 8/1/83

HAYES, SEAY, MATTERN & MATTERN
ARCHITECTS - ENGINEERS - PLANNERS

CONTRACT NO. 44-1071
PROJECT NO. W-8126

PLAN OF WATER MAINS

ELLIOTT CITY WATER IMPROVEMENTS

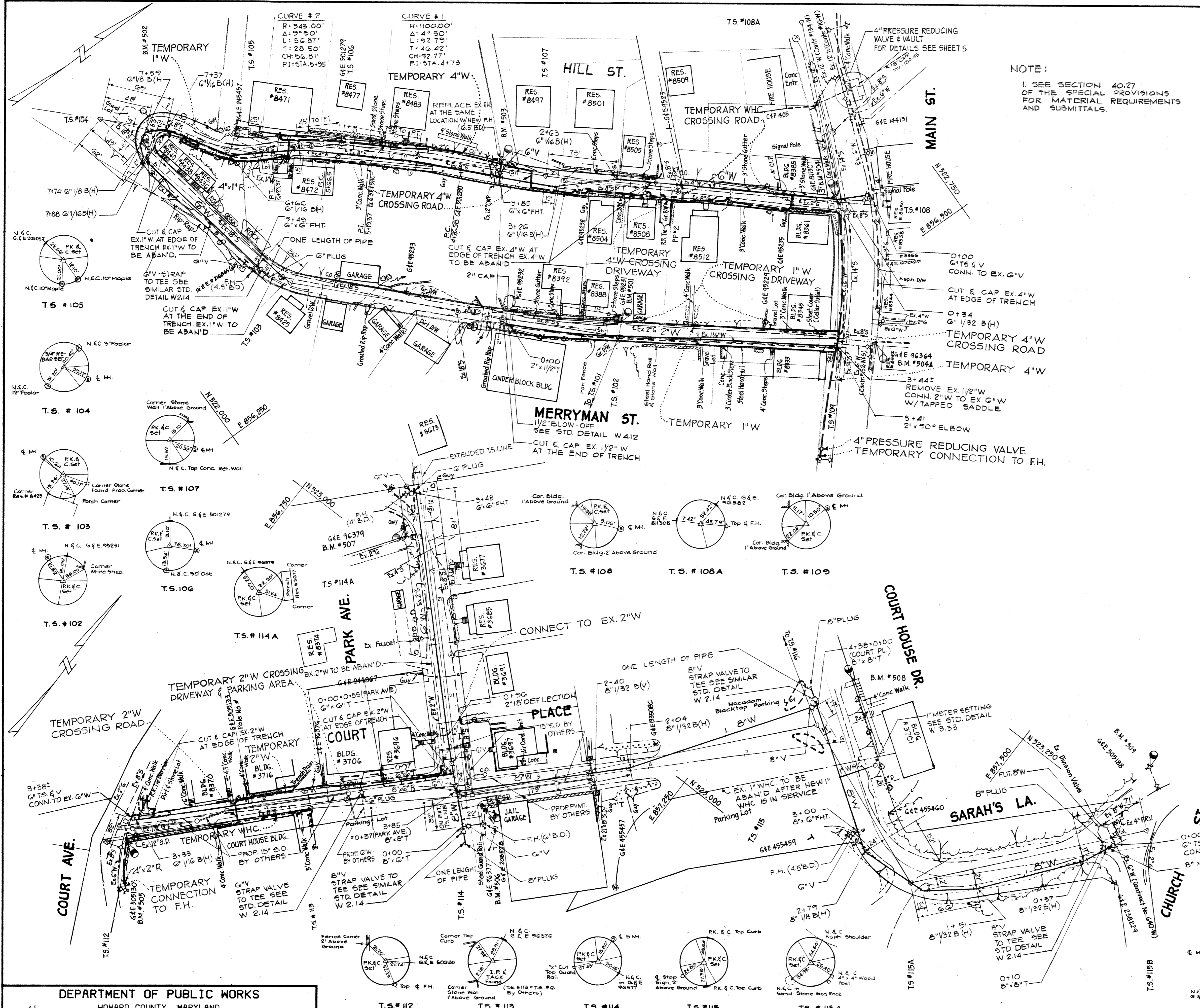
ELECTION DISTRICT
ELLIOTT CITY NO. 2

DRAWING NO. 2 OF 6
SCALE: 1"=30'
DATE MAY 16, 1983
COMM. NO. 4106

BENCH MARK DESCRIPTIONS

BENCH MARK	DESCRIPTIONS	ELEVATION
BM #501	R.R. SPIKE IN POLE G & E 95231 ON WEST SIDE OF MERRYMAN ST., 240'± WEST OF MAIN ST. (SET BY OTHERS)	191.70
BM #502	" " CUT IN RIM OF SANITARY SEWER MANHOLE 12'± SOUTHWESTERLY FROM THE S.W. CORNER OF RES. #8440 MERRYMAN ST.	186.01
BM #503	"x" CUT IN BONNET BOLT OF FIRE HYDRANT NORTH SIDE OF HILL ST. NEAR RES. #8497	234.98
BM #504	CUT N&W IN POLE G & E 811307 AT N.W. CORNER OF INTERSECTION OF MAIN ST. AND HILL ST.	187.57
BM #504A	CUT N&W IN POLE G & E 96364 ON N.E. CORNER OF INTERSECTION OF MAIN ST. AND COURT AVE.	181.48
BM #505	CUT N&W IN POLE G & E 505130 AT N.E. CORNER OF INTERSECTION OF COURT AVE. AND COURT PLACE.	214.88
BM #506	R.R. SPIKE IN POLE G & E 96377 AT S.E. CORNER OF INTERSECTION OF COURT PLACE AND PARK AVE.	246.85
BM #507	CUT N&W IN POLE G & E 96379 ON SOUTH SIDE OF PARK AVE., 270'± WEST OF COURT PLACE.	257.34
BM #508	" " CUT IN SOUTHWEST CORNER OF FIRST TREAD OF CONC. STEPS LEADING TO BLDG. 3701 COURT HOUSE DRIVE.	262.71
BM #509	"x" CUT IN EAST BONNET BOLT OF F.H. ON WEST SIDE OF CHURCH RD., 70'± NORTHERLY FROM INTERSECTION OF CHURCH RD. & SARAH'S LANE.	285.05

NOTE:
I SEE SECTION 40.27 OF THE SPECIAL PROVISIONS FOR MATERIAL REQUIREMENTS AND SUBMITTALS.



Howard Noel
ELLICOTT CITY WATER IMPROVEMENTS
PROJECT NO. W-8126
CONTRACT NO. 44-1071

DEPARTMENT OF PUBLIC WORKS
HOWARD COUNTY, MARYLAND
Steve F. Newman 8-9-83 DIRECTOR OF PUBLIC WORKS - DATE
Robert W. Wood 8/16/83 CHIEF - BUREAU OF UTILITIES - DATE
William D. Reid 8/1/83 CHIEF - BUREAU OF ENGINEERING - DATE
Allan S. Brown 8/6/83 CHIEF - UTILITY DIVISION - DATE

HAYES, SEAY, MATTERN & MATTERN
ARCHITECTS - ENGINEERS - PLANNERS

CONTRACT NO. 44-1071
PROJECT NO. W-8126

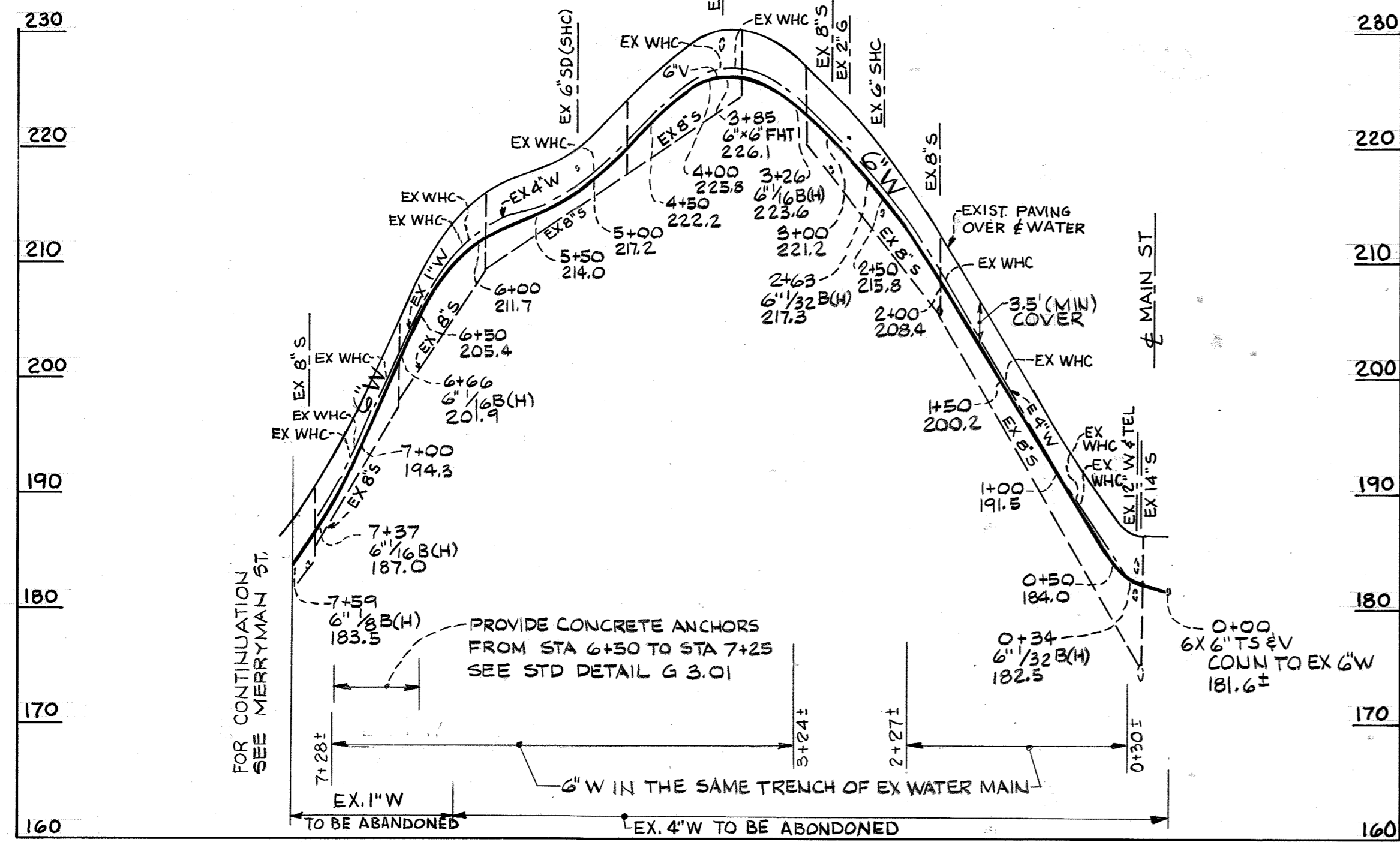
PLAN OF TEMPORARY
WATER MAINS

ELLICOTT CITY WATER
IMPROVEMENTS

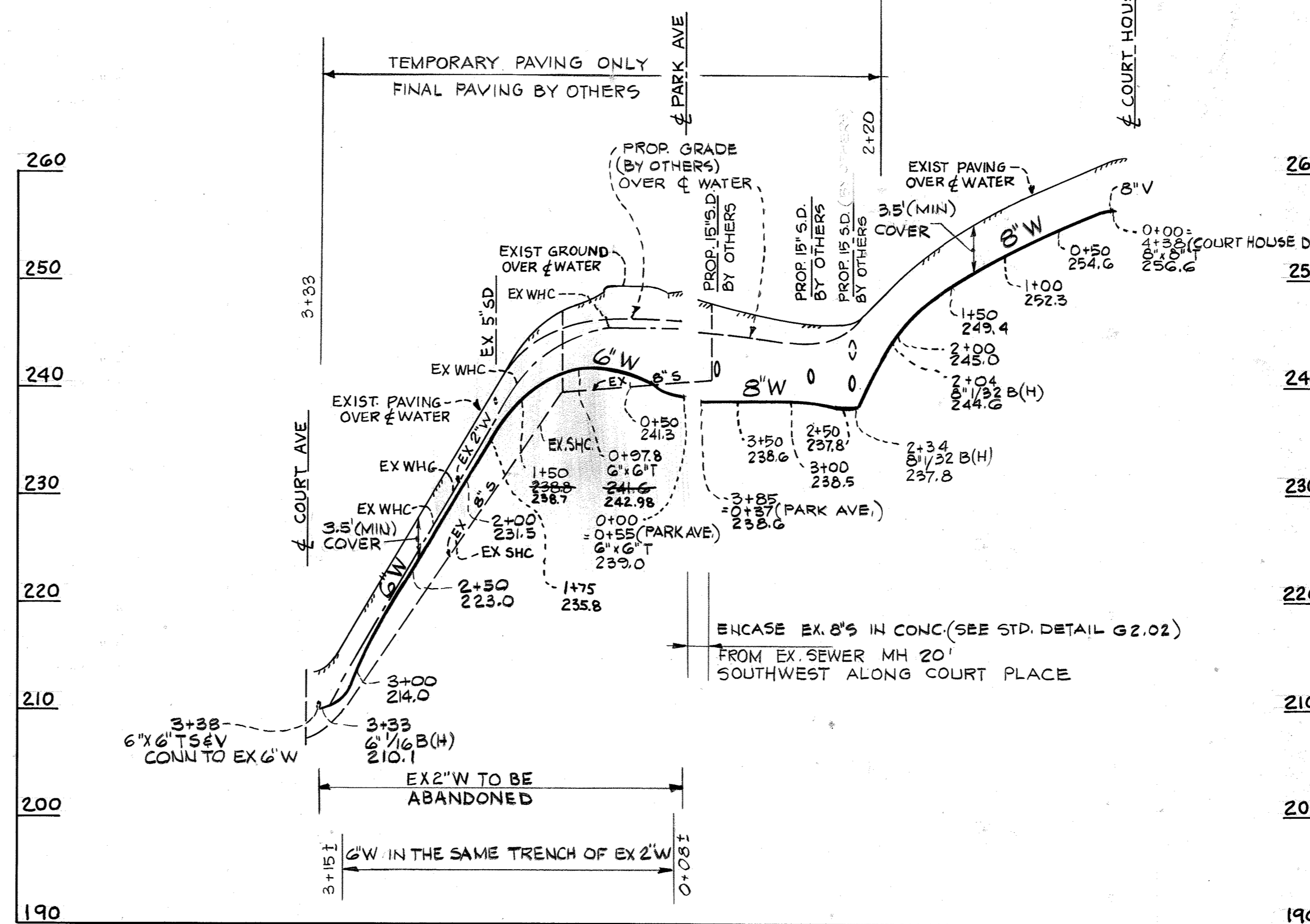
ELECTION DISTRICT
ELLICOTT CITY NO. 2

DRAWING NO. 3 OF 6
SCALE: 1"=50'
DATE MAY 16, 1983
COMM. NO. 4106

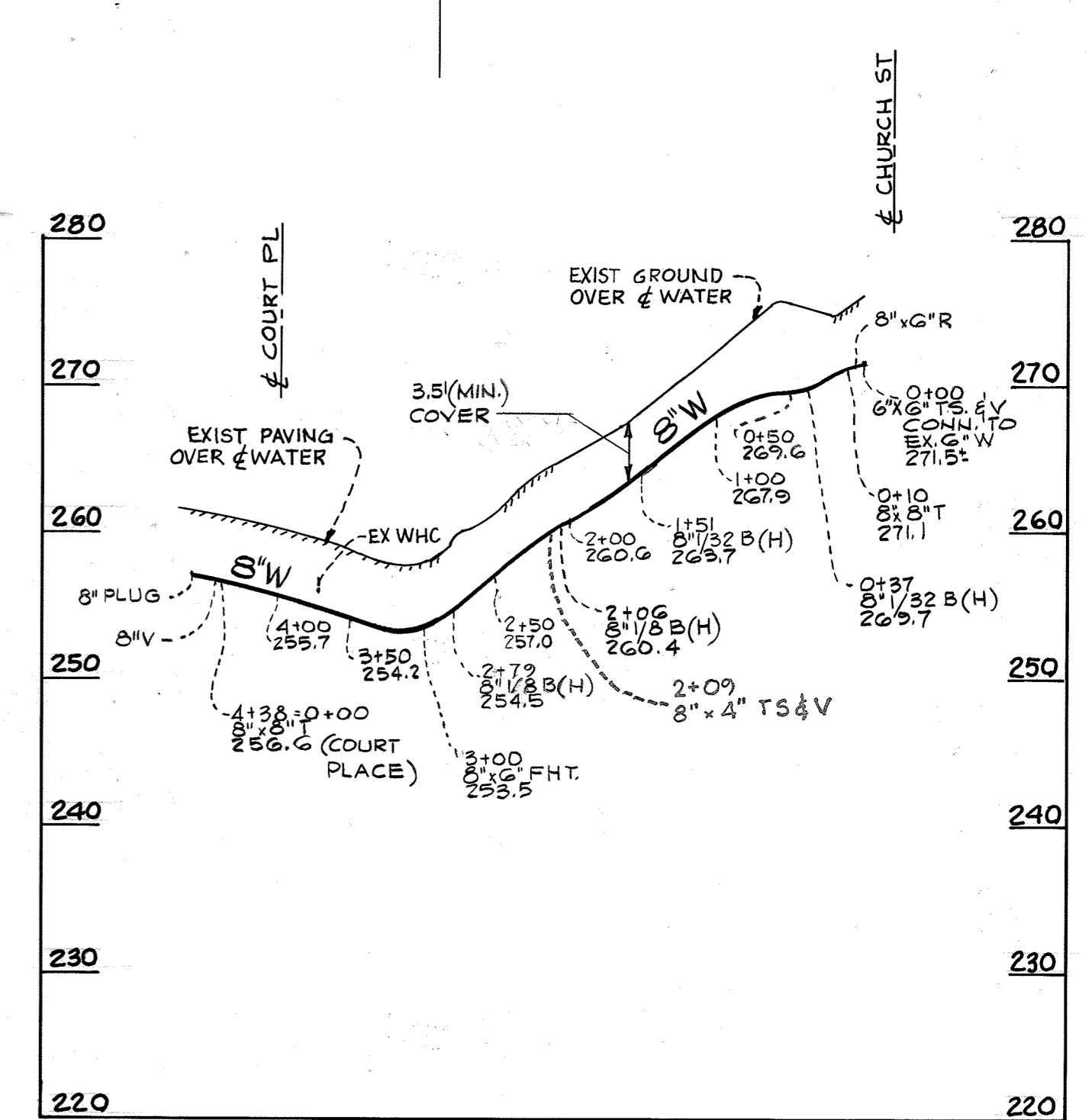
HILL STREET



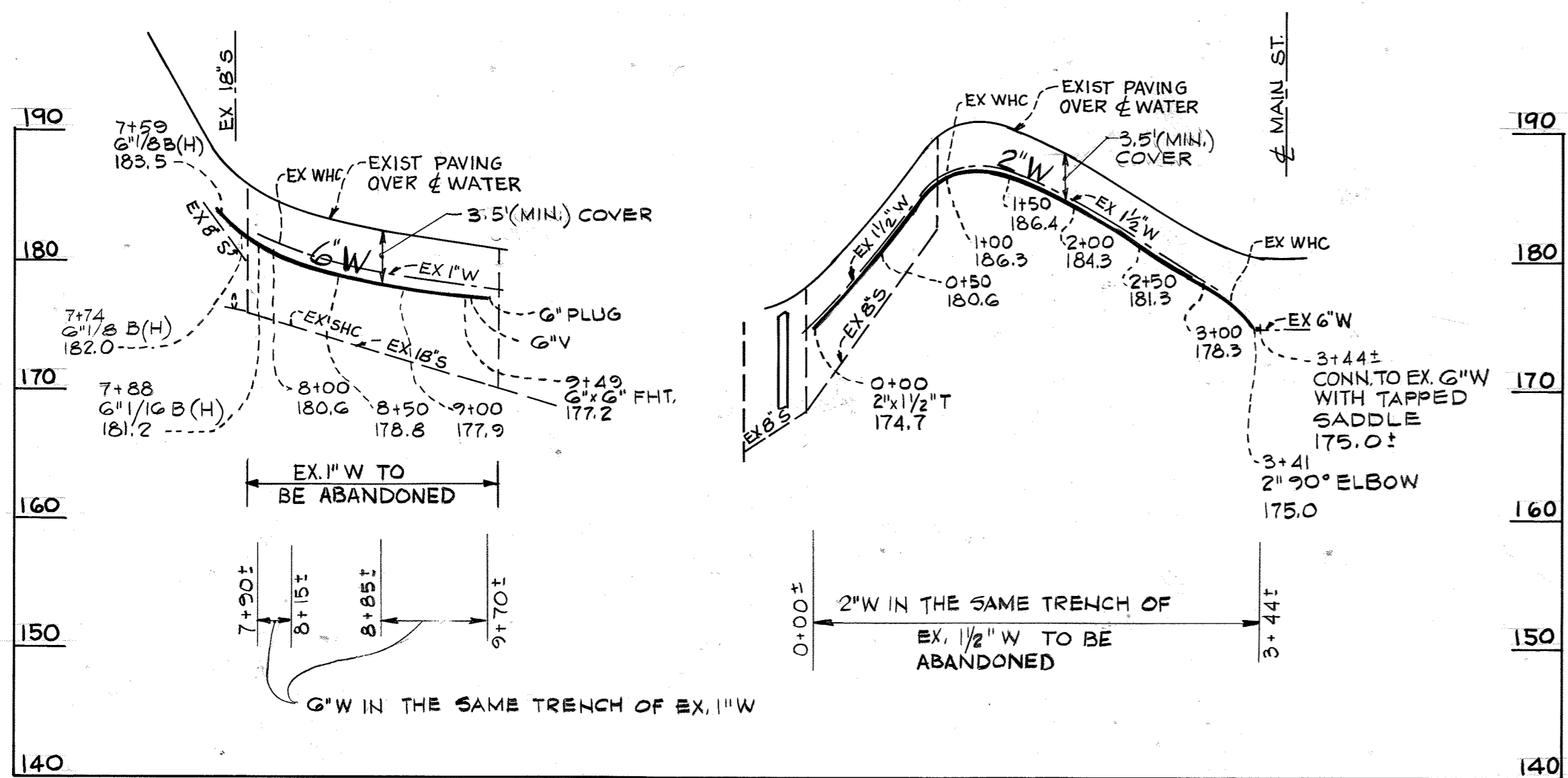
COURT PLACE



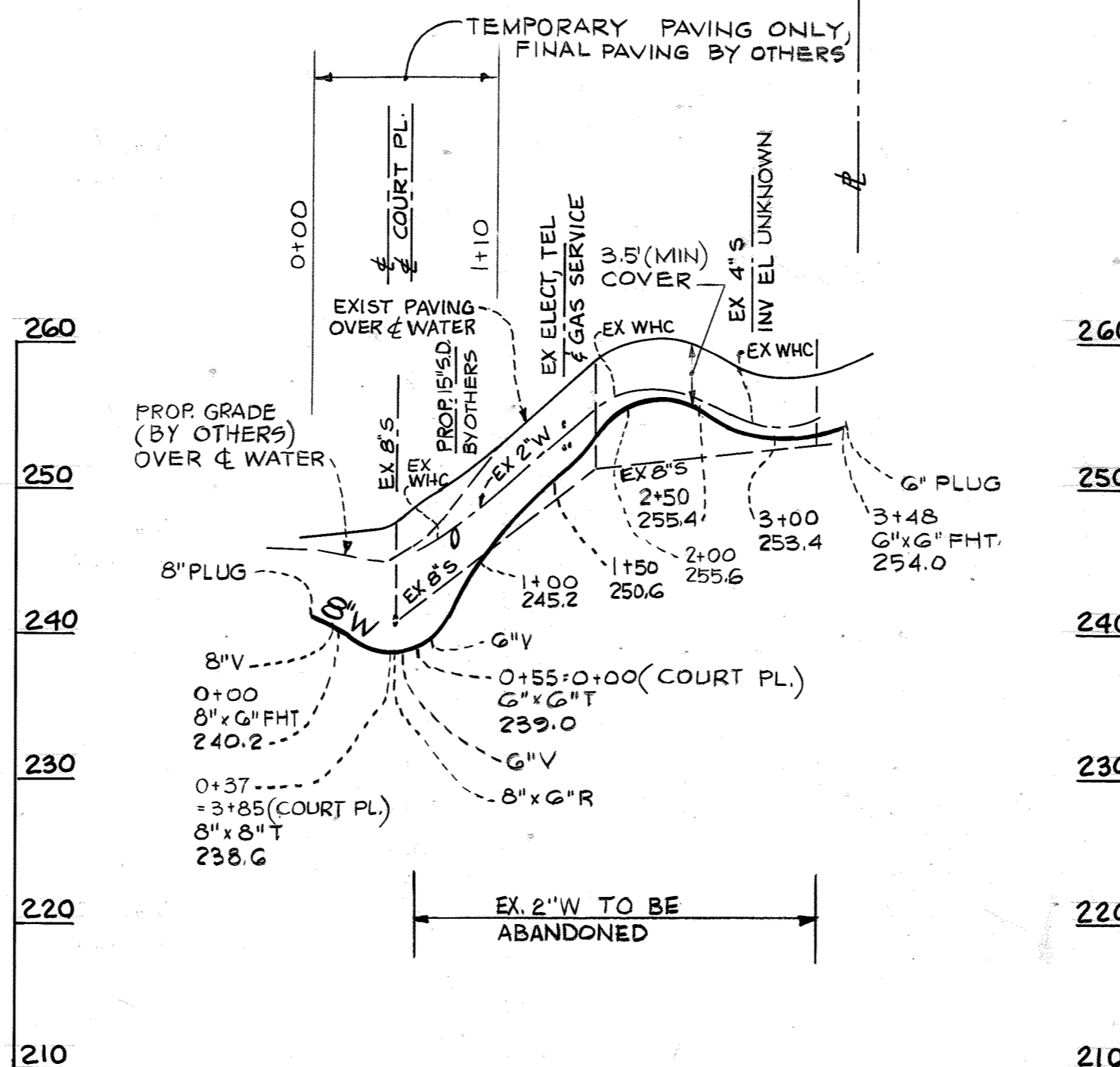
COURT HOUSE DR. SARAH'S LA.



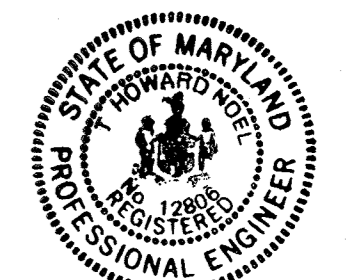
MERRYMAN STREET



PARK AVE.



SURVEY DATE: JUNE, 1982



Howard J. Haines

ELLICOTT CITY WATER IMPROVEMENTS
PROJECT NO. W-8126
CONTRACT NO. 44-1071

WR&A "AS BUILT" 9/29/21

DEPARTMENT OF PUBLIC WORKS
HOWARD COUNTY, MARYLAND

Director of Public Works - DATE
Chief - Bureau of Engineering - DATE
Chief - Bureau of Utilities - DATE

HAYES, SEAY, MATTERN & MATTERN
ARCHITECTS - ENGINEERS - PLANNERS

CONTRACT NO. 44-1071
PROJECT NO. W-8126

PROFILES OF
WATER MAINS

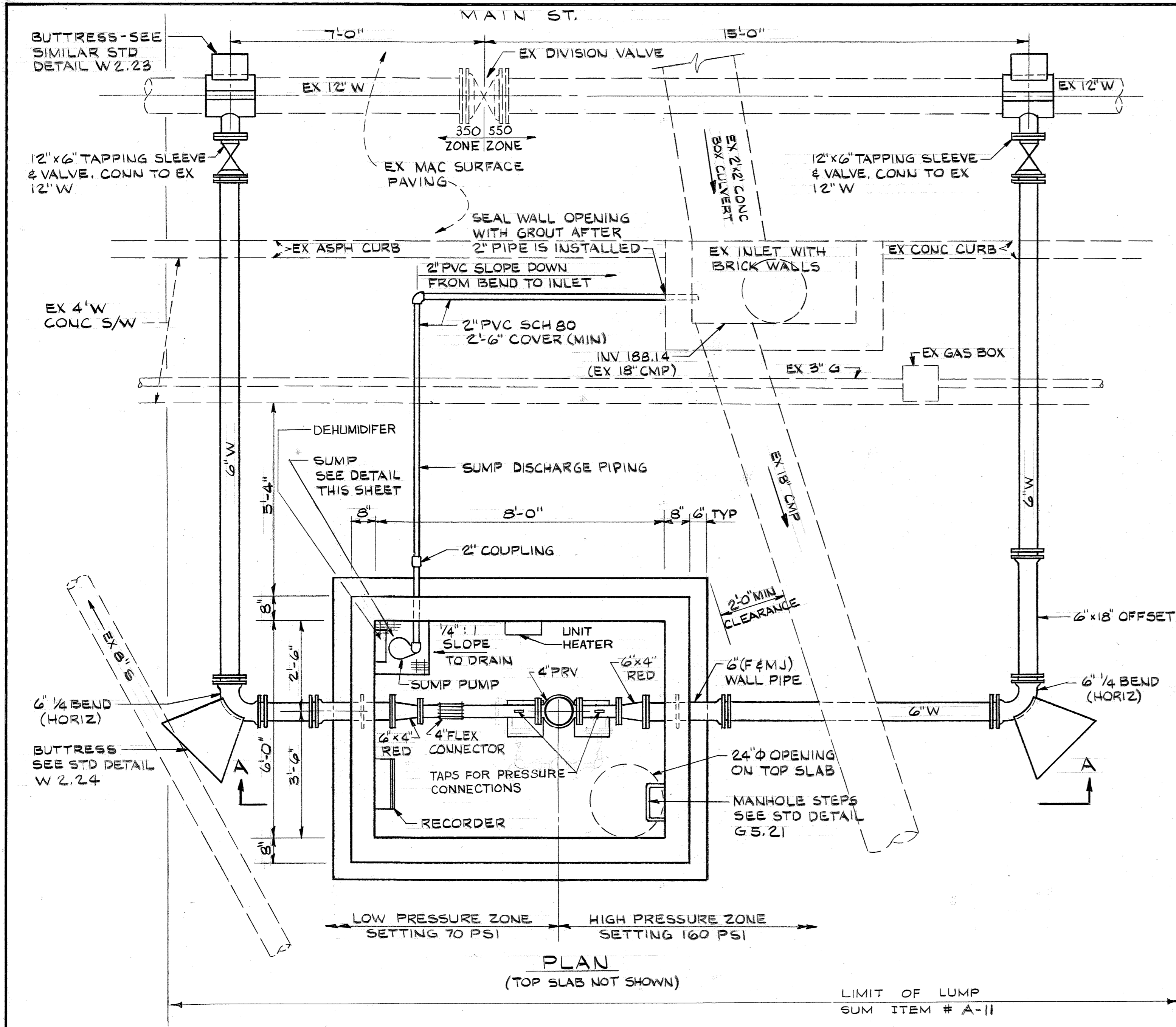
ELLICOTT CITY WATER
IMPROVEMENTS

ELECTION DISTRICT
ELLICOTT CITY NO. 2

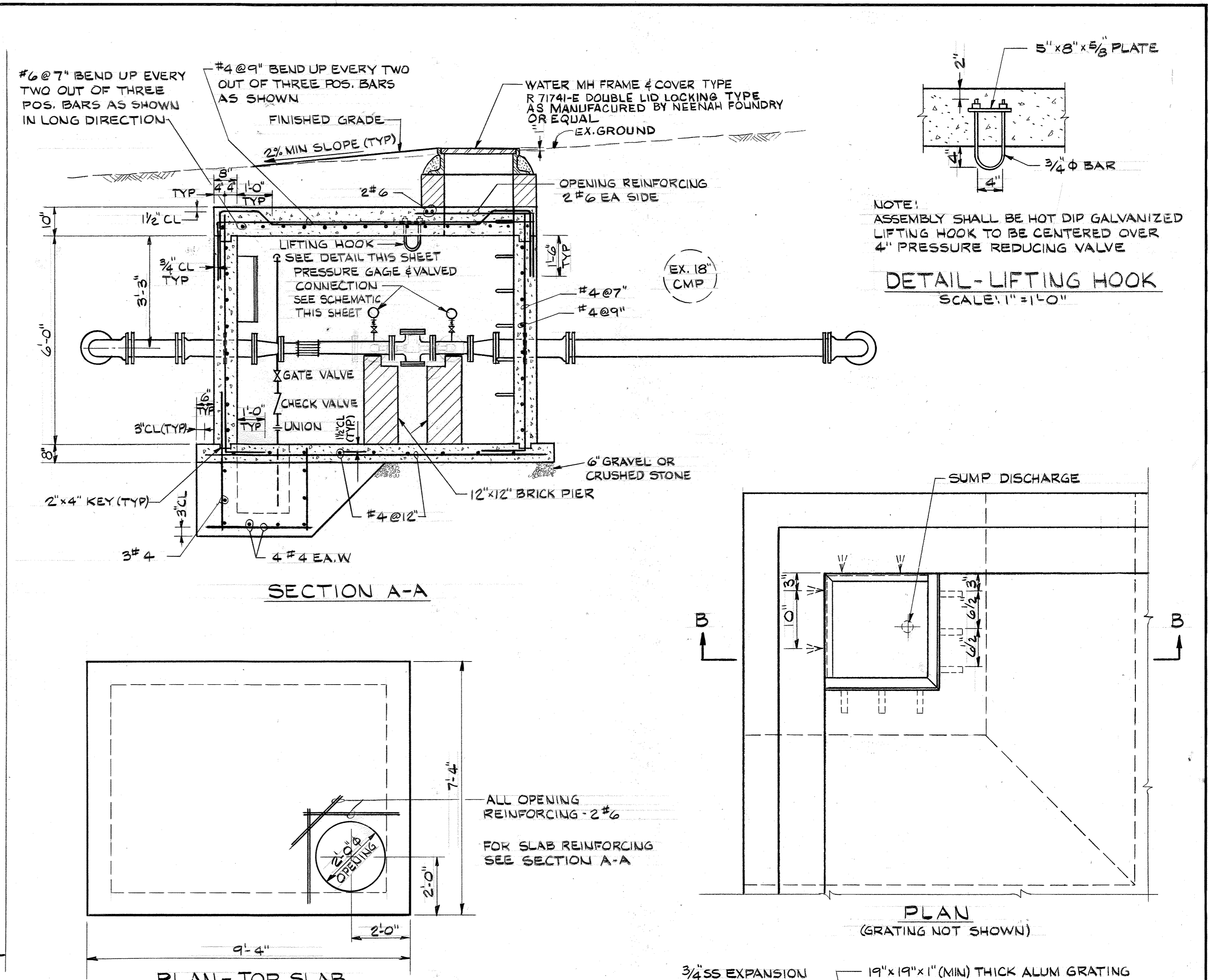
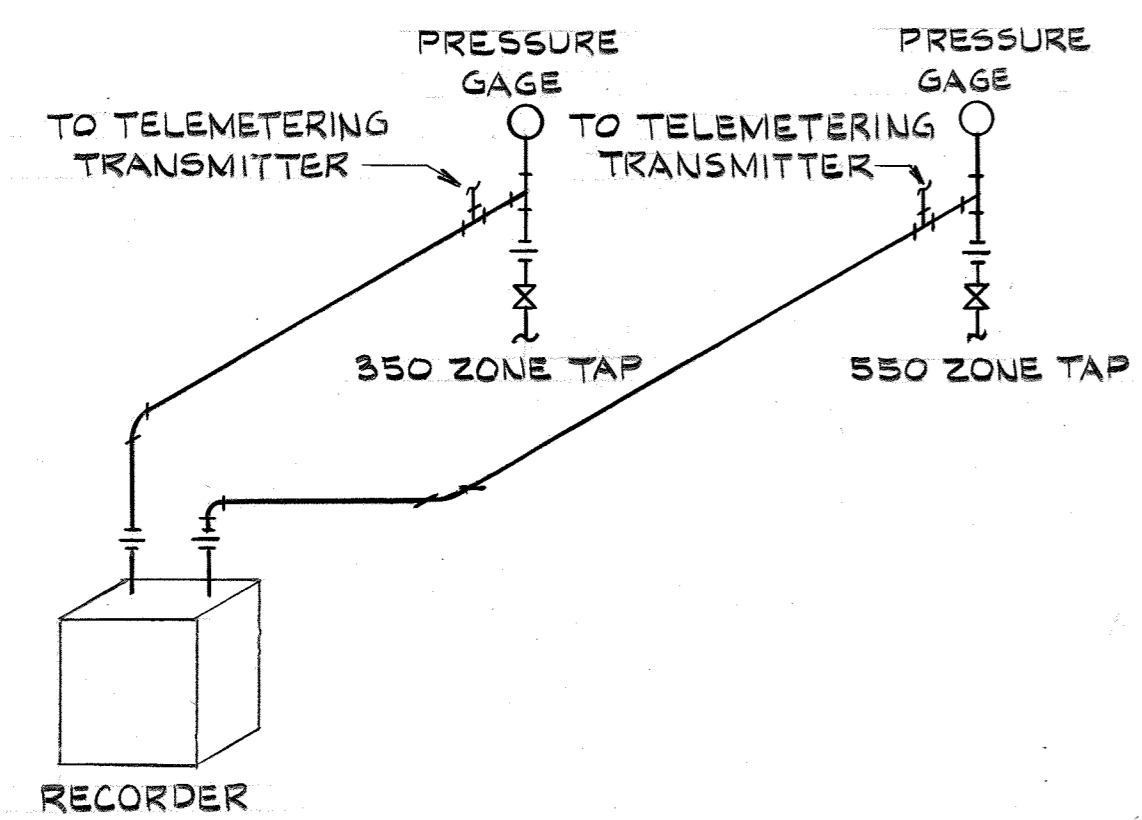
DRAWING
NO. 4
OF 6

SCALE: HORIZ. 1"=100'
VERT. 1"=10'
DATE: MAY 16, 1983

COMM. NO.
4106



DETAIL - 4" PRESSURE REDUCING VALVE VAULT
SCALE: 1/2" = 1'-0"



THAT PORTION OF GRATING AND ANCHOR STRAP ENCASED IN CONCRETE SHALL BE UNIFORMLY COATED WITH A BITUMINOUS, SOLVENT TYPE, ASBESTOS FILLED ALUMINUM PIGMENTED COATING CONFORMING TO FEDERAL SPECIFICATION TC-C-00498A



ELLICOTT CITY WATER IMPROVEMENTS
PROJECT NO. W-8126
CONTRACT NO. 441071

DEPARTMENT OF PUBLIC WORKS
HOWARD COUNTY, MARYLAND

Joseph F. Neman 8-9-83
DIRECTOR OF PUBLIC WORKS - DATE

Allen S. Brown 8/9/83
CHIEF - BUREAU OF UTILITIES - DATE

HAYES, SEAY, MATTERN & MATTERN
ARCHITECTS - ENGINEERS - PLANNERS

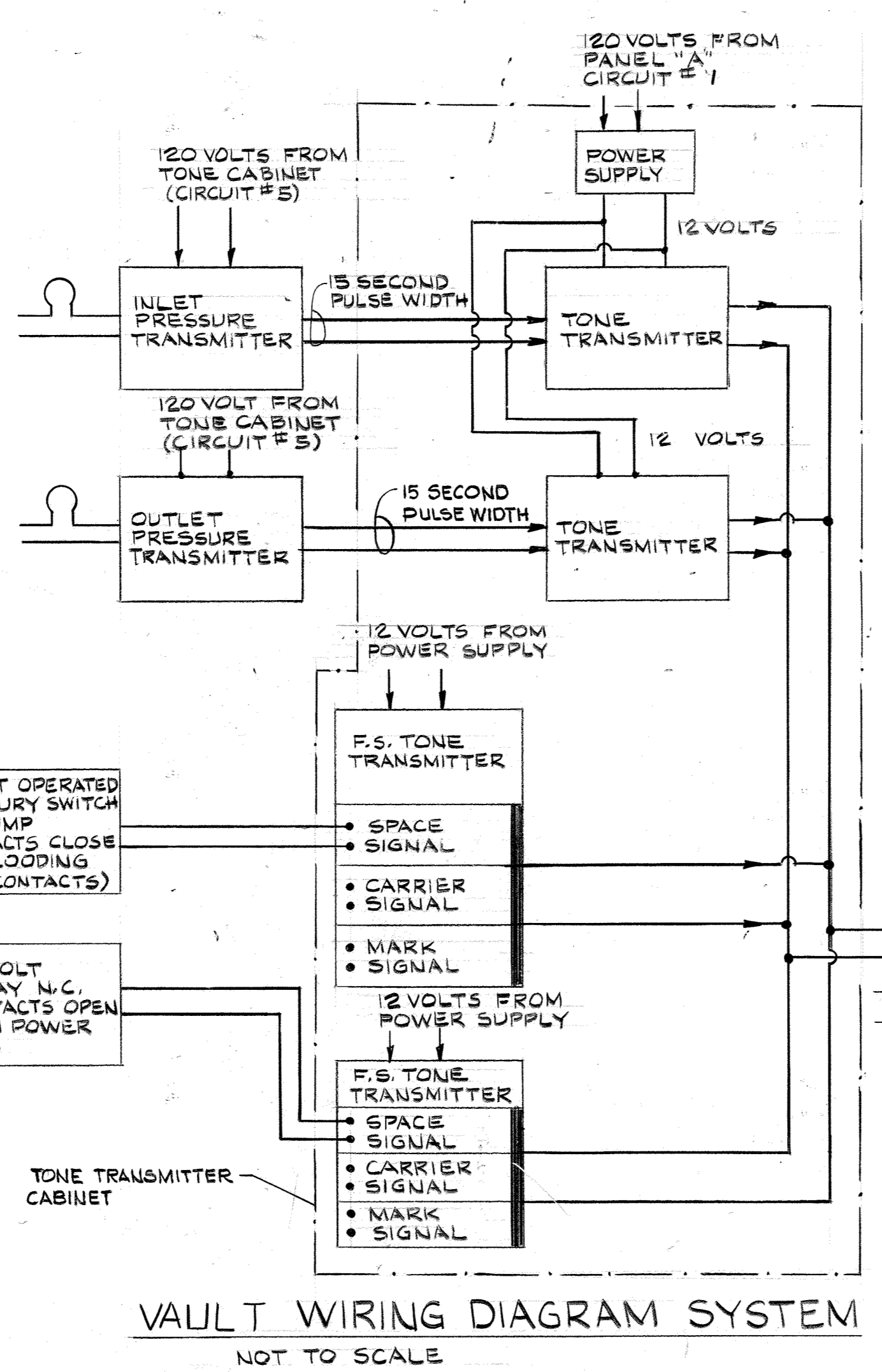
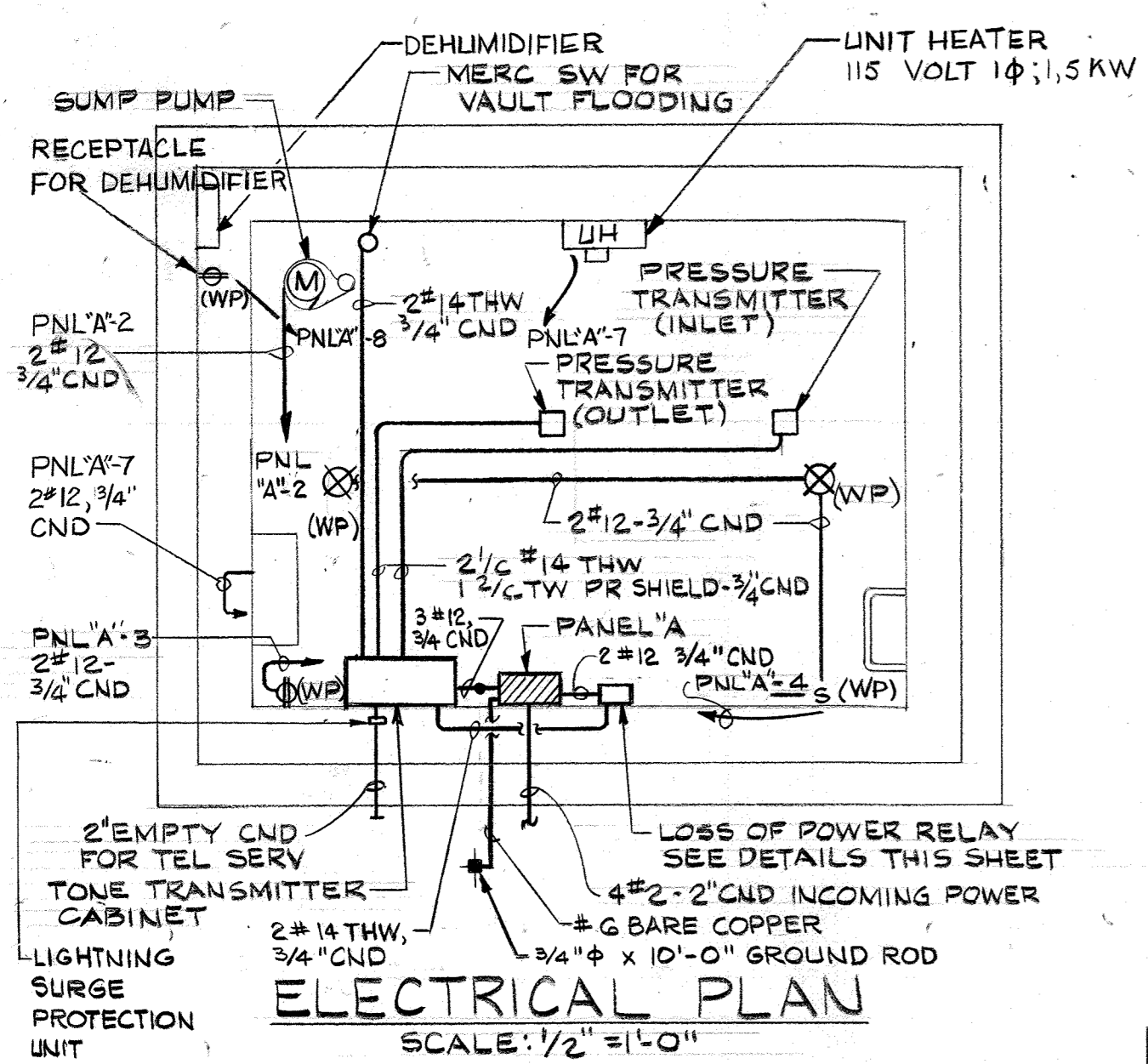
CONTRACT NO. 44-1071
PROJECT NO. W-8126

VAULT DETAILS

ELLICOTT CITY WATER IMPROVEMENTS

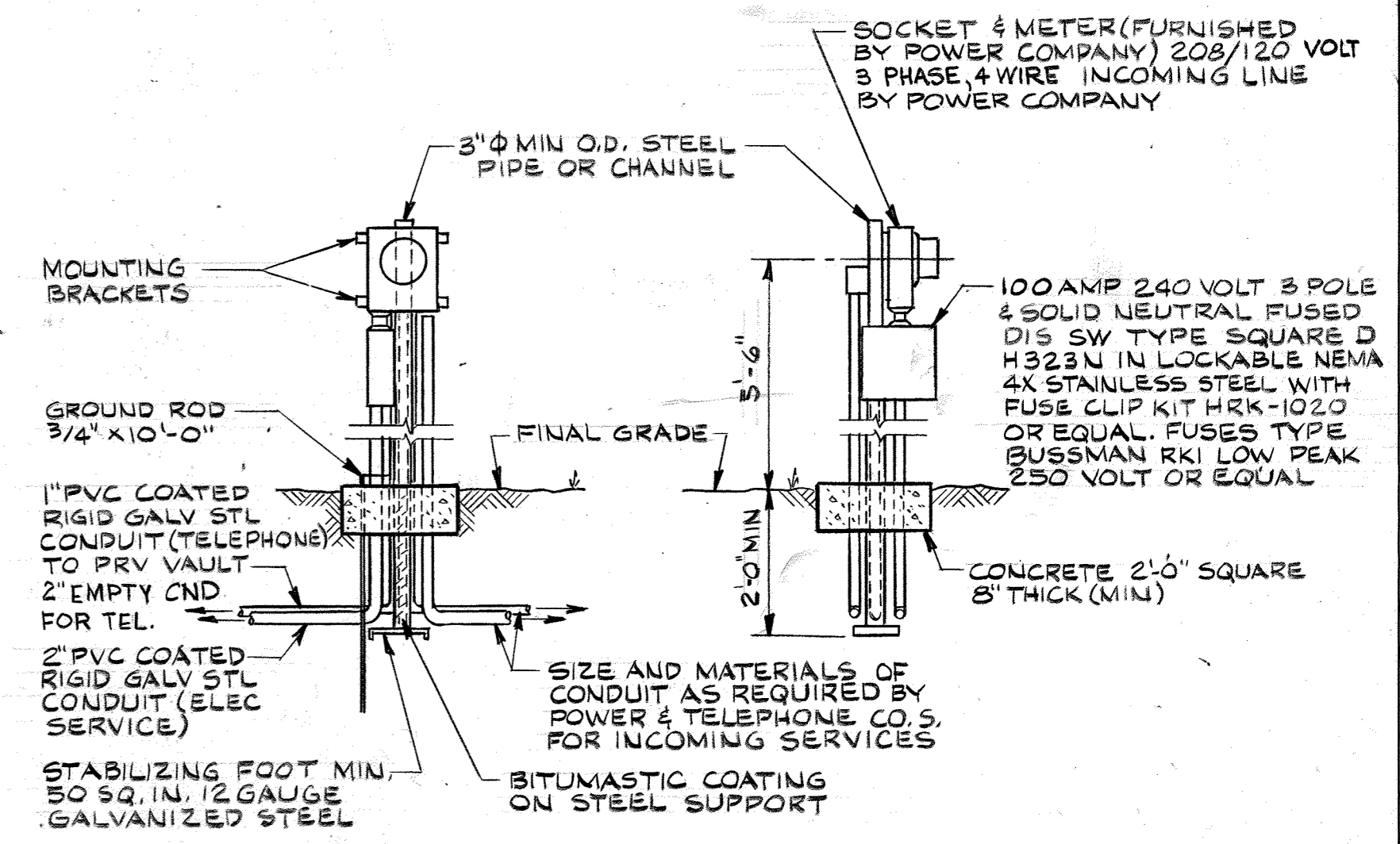
ELECTION DISTRICT
ELLICOTT CITY NO. 2

DRAWING NO. 5 OF 6
SCALE AS SHOWN
DATE MAY 16, 1983
COMM. NO. 4106



LOADS (KW)		LOAD DESCRIPTION		NO. WIRES		CIRCUIT DESIGNATION		NO. WIRES		CIRCUIT DESIGNATION		LOADS (KVA)	
A	B	C	D	1	2	3	4	5	6	7	8	A	B
0.4				2	12	20	1	2	2	12	20	0.66	
	0.4			2	12	20	1	3	4	2	12	0.30	
		1.5		2	12	20	1	5	6	2	12	0.2	
			1.5	2	12	20	1	7	8	2	12	0.31	
								9	10				
								11	12				
								13	14				
								15	16				
7.9	0.4	0.18		TOTAL LEFT SIDE 5.46				TOTAL RIGHT SIDE 0.97 0.30 0.2					
0.93	0.30	0.2		TOTAL RIGHT SIDE 1.43									
2.89	0.75	0.38		TOTAL 3.95									
TOTAL KVA = 3.95		KVA = 11		A		%		OF = 4					

PANELBOARD SCHEDULE



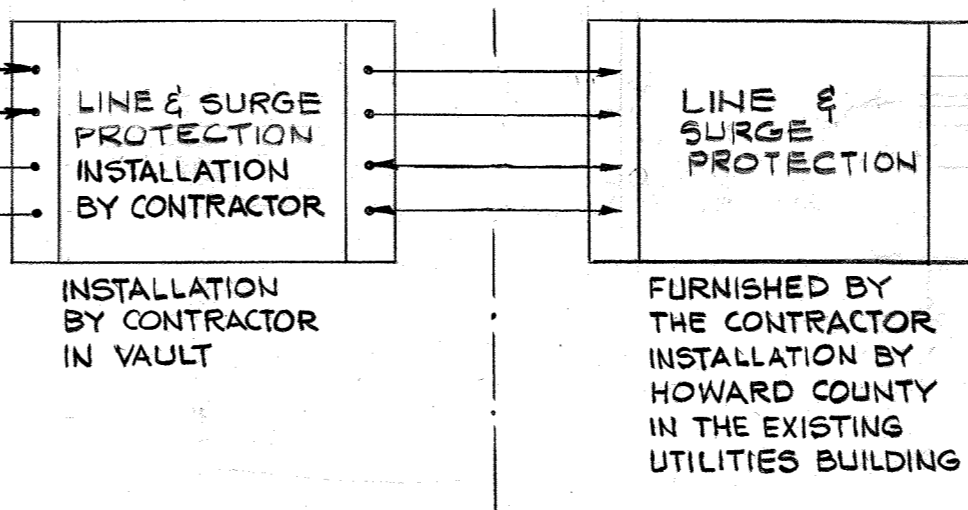
NOTE: INSTALL SERVICE ENTRANCE PEDESTAL APPROXIMATELY 10 FT FROM THE VAULT. COORDINATE LOCATION WITH POWER CO.

LEGEND:

- ⊗ INCANDESCENT LIGHTING FIXTURE SEE SPECIFICATIONS
- S SINGLE POLE SWITCH
- ▨ PANELBOARD
- ⊕ DUPLEX RECEPTACLE
- (WP) WATERPROOF FIXTURE

NOTES:

1. MOUNTING HEIGHTS ARE MEASURED TO THE TOP OF EQUIPMENT AND ARE AS FOLLOWS:
 - a. PANELBOARD 5'-6"
 - b. RECEPTACLE 4'-0"
 - c. SWITCH 4'-0"
 - d. MERCURY SWITCH FOR FLOODING ACTIVATED WITH 1'-0" OF WATER ON VAULT FLOOR.
2. ALL GROUND WIRES NOT INDICATED IN RACEWAYS SHALL BE INSTALLED IN ACCORDANCE WITH N.E.C. ARTICLE 250.



DEPARTMENT OF PUBLIC WORKS
HOWARD COUNTY, MARYLAND

Director of Public Works: *John F. Newman* 8-9-77
 Chief - Bureau of Engineering: *Allen S. Brown* 8/6/83
 Chief - Bureau of Utilities: *Robert W. Wood* 8/16/83
 Chief - Utility Division: *Allen S. Brown* 8/6/83

HAYES, SEAY, MATTERN & MATTERN
ARCHITECTS - ENGINEERS - PLANNERS

CONTRACT NO. 44-1071
PROJECT NO. W-8126

ELECTRICAL DETAILS

ELLICOTT CITY WATER IMPROVEMENTS

ELECTION DISTRICT ELLICOTT CITY NO. 2

DRAWING NO. 6 OF 6
SCALE AS SHOWN
DATE MAY 16, 1983
COMM. NO. 4106



ELLICOTT CITY WATER IMPROVEMENTS
PROJECT NO. W-8126
CONTRACT NO. 44-1071