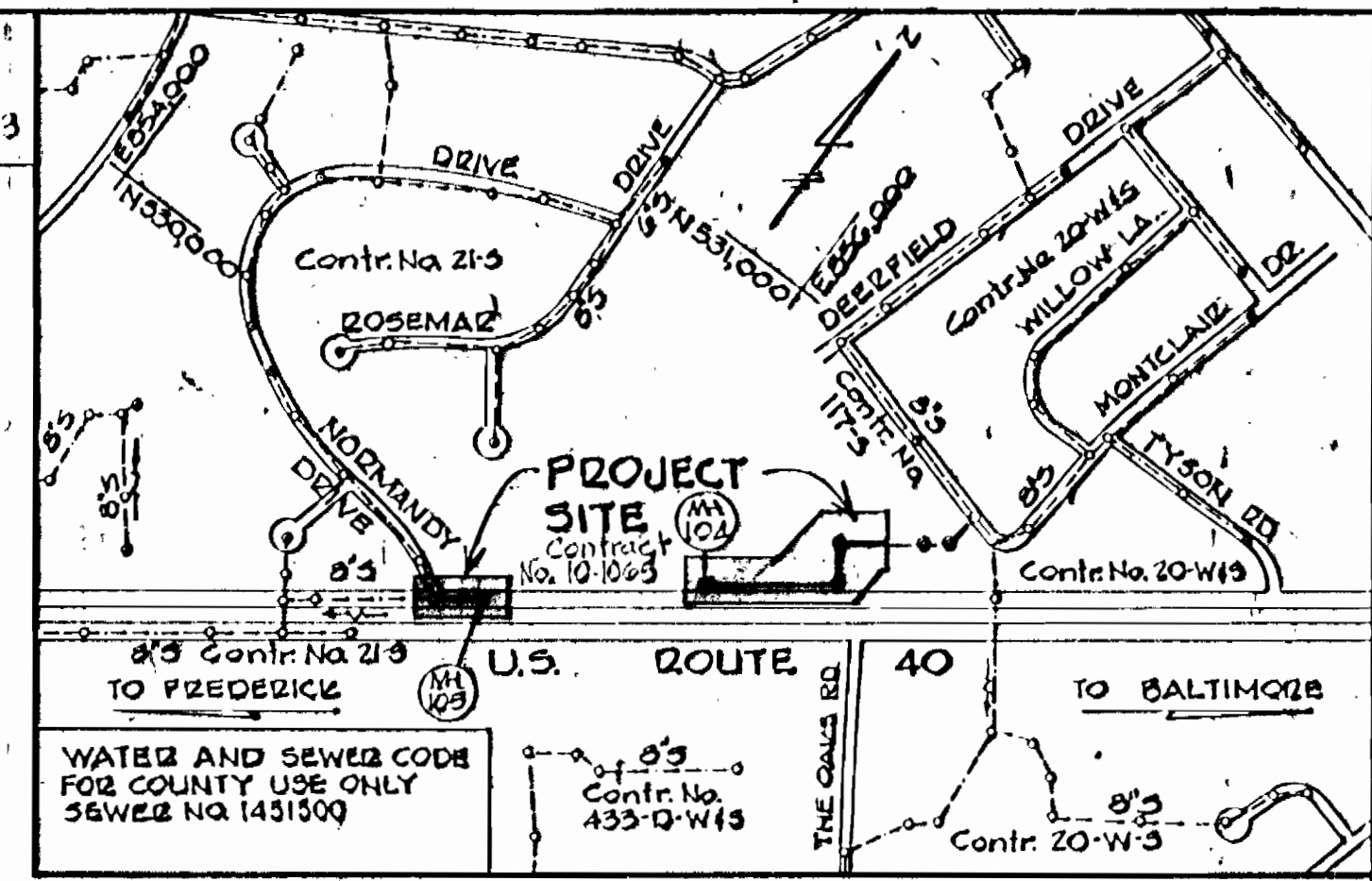


1065/1 S

**GENERAL NOTES CONTINUED**  
 15. The Contractor shall notify the following utilities and agencies at least five (5) working days before starting work on shown on these plans.  
 State Highway Administration - 531-5533  
 Baltimore Gas and Electric Company - Underground Electric Distribution Customer Service - 685-0123  
 Baltimore Gas and Electric Company - Underground Gas Distribution Customer Service - 685-0123  
 Engineering - "Damage Control" - 234-5621  
 "Miss Utility" - 1-559-0100  
 Chesapeake and Potomac (CAP) Telephone Company - 725-9978  
 American Telephone and Telegraph - Cable Location Division - 393-3553  
 Colonial Pipeline Company - 781-4641  
 Bureau of Utilities - Howard County - 992-2363

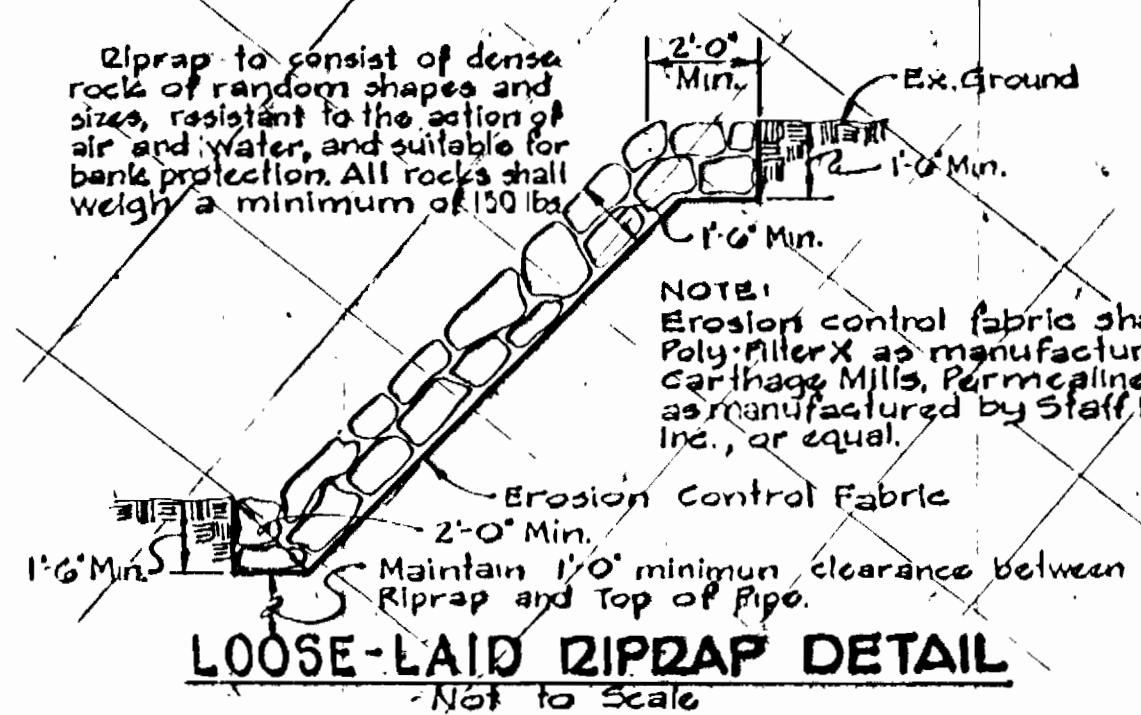
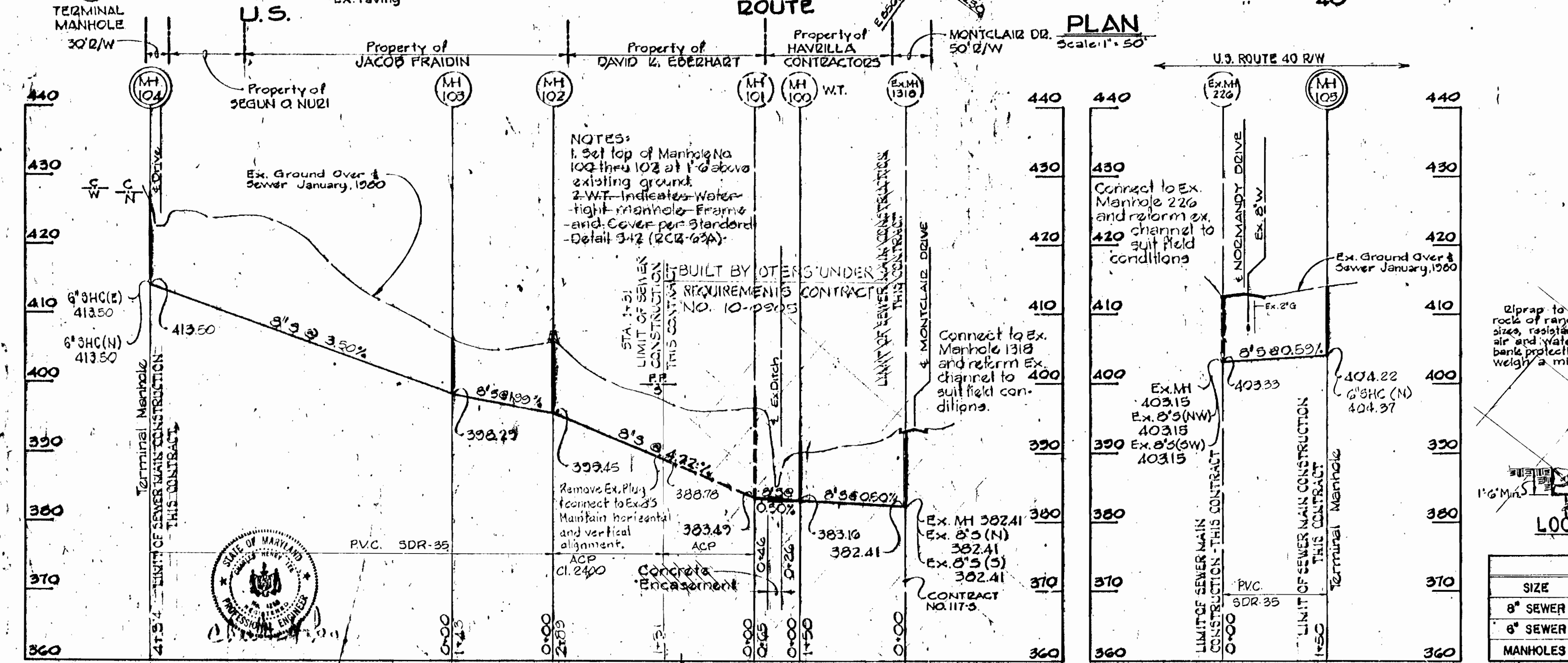
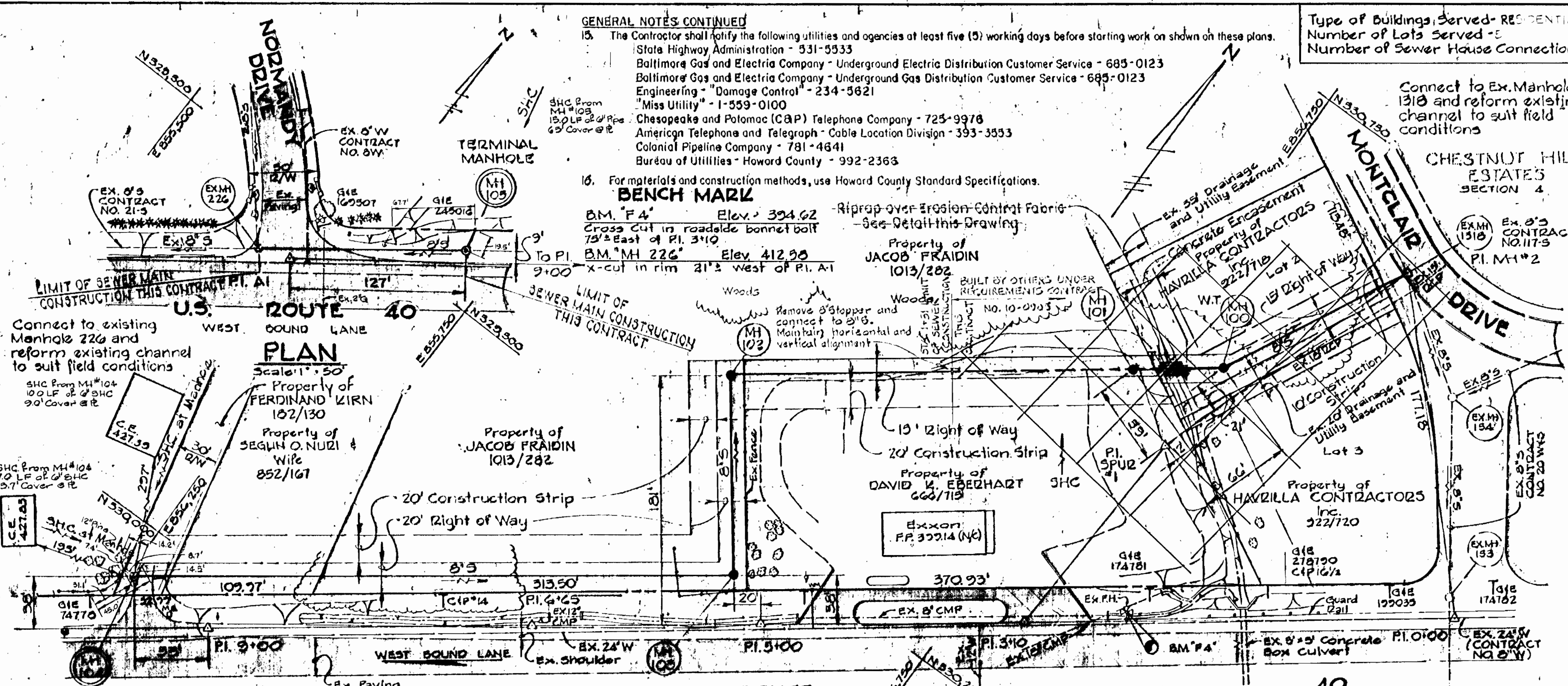
Type of Buildings Served - RESIDENTIAL  
 Number of Lots Served - 5  
 Number of Sewer House Connections - 3



**VICINITY MAP**  
Scale: 1"=600'

**GENERAL NOTES**

- The approximate locations of existing utilities are shown. The Contractor shall take all necessary precautions to protect the existing utilities and to maintain uninterrupted service. Any damage incurred due to the Contractor's operation shall be repaired immediately at the Contractor's expense.
- All horizontal controls are based on Maryland State Coordinates.
- All vertical controls are based on U.S.G.S. Datum.
- All pipe elevations shown are invert elevations.
- All utilities shall be cleared by a minimum of 6" vertically. All utility poles shall be cleared by a minimum of 2'-0" horizontally or tunneled if required. Cost for tunneling or bracing poles shall be included in the unit prices bid for excavation and backfill for sewer mains.
- For all standard details, use Howard County Standard Details.
- The Contractor shall locate existing utilities in advance of construction operations in the vicinity of proposed utilities.
- Trees shall be protected from damage to the maximum extent. Trees located within construction strips shall not be removed or damaged by the Contractor.
- The Contractor shall remove trees, stumps, and roots along the line of excavation as directed by the Engineer. The cost for such removal shall be included in the unit prices bid for excavation and backfill for sewer mains.
- The Contractor shall place regulation "Men Working" and warning signs as required to comply with Maryland State Highway Administration Manual of Traffic Control for Highway Construction and Maintenance Operations.
- All sewer mains shall be C.S.P., V.C.P., or A.C.P. Class 2400 unless otherwise noted, and PVC.
- The Contractor shall provide a joint in all sewer mains within 2'-0" of the manhole exterior walls.
- All manholes shall be 4'-0" inside diameter, unless otherwise noted.
- Manholes designated W.T. in plan and profile shall have watertight frames and covers. Where watertight frame and cover is used, set top of frame 1'-6" above finished grade.



QUANTITIES

SIZE	ESTIMATED	"AS BUILT"	SUPPLIER
8" SEWER	330 L.F.	150 L.F. ACP 78 L.F. PVC	Certain-Teed Corp
6" SEWER	30 L.F.	32 L.F.	Certain-Teed Corp
MANHOLES	4 P.A.	4	Atlantic Precast Corp

CONTRACT NO. 10-1065  
 CAPITAL PROJECT 3-8-6100  
 ROUTE 40 COLLECTOR SEWER  
 ELECTION DISTRICT NO. 2  
 HOWARD COUNTY, MARYLAND

<b>PURDUM &amp; JESCHKE</b> ENGINEERS 1023 N. CALVERT ST. BALTIMORE, MARYLAND	DEPARTMENT OF PUBLIC WORKS HOWARD COUNTY, MARYLAND CHIEF BUREAU OF UTILITIES DATE: _____ DIRECTOR OF PUBLIC WORKS DATE: _____ CHIEF BUREAU OF ENGINEERING DATE: _____	CONTRACT NO. 10-1065 CAPITAL PROJECT NO. 3-8-6100	PLAN AND PROFILE FOR SEWER MAIN	ROUTE 40 COLLECTOR SEWER ELECTION DISTRICT NO. 2 HOWARD COUNTY, MARYLAND	DRAWING NO. 1 OF 1 SCALE AS SHOWN	Designed PWR Drafted PWR Checked REP P.E. # 346610-4 3413-21
		W.O. 3413-21 <span style="float: right;">AS-BUILT Sept. 30, 1963 March 23, 1963</span>				