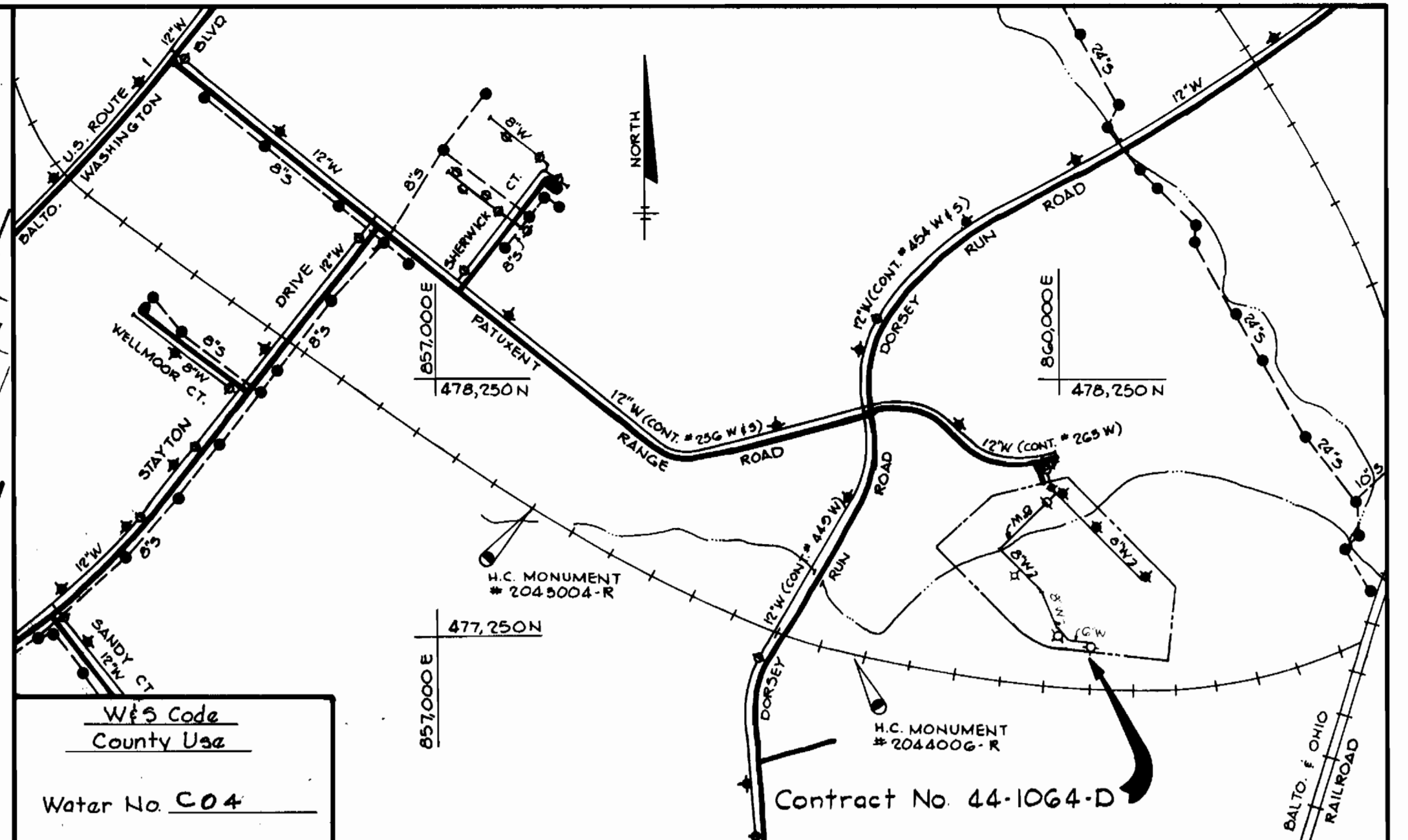


BENCH MARKS

H.C. Monument # 2043004-R Elev. 238.27
 Concrete Monument 0.2' above surface, 6.65' Northeast of rail, 500' Northeast of United States Trucking Warehouse.
 H.C. Monument # 2044006-R Elev. 210.77
 Rebar 3" North of top bank 0.3' below surface, 350' East of bridge abutment @ Dorsey Run Road



VICINITY MAP
 Scale: 1"=600'

GENERAL NOTES

- Approximate location of existing mains are shown. The Contractor shall take all necessary precautions to protect existing mains and services and maintain uninterrupted supply. Any damage incurred shall be repaired immediately to the satisfaction of the Engineer, at the Contractor's expense.
- All horizontal controls are based on Maryland State Coordinates.
- All vertical controls are based on U.S.G.S. Datum.
- All pipe elevations shown are invert elevations.
- Clear all utilities by a minimum of 6". Clear all poles by 2'-0" minimum or tunnel as required. Any cost incurred to the Contractor for tunneling or bracing at poles shall be included in unit prices bid for excavation and backfill.
- For details not shown on the drawings use Howard County Standard Details.
- For materials and construction methods use Howard County Standard Specifications.
- Contractor shall locate existing utilities a minimum of two (2) weeks in advance of construction operations in the vicinity of proposed utilities at his own expense.
- Contractor shall notify the following utilities or agencies at least five (5) working days before starting work shown on these plans:

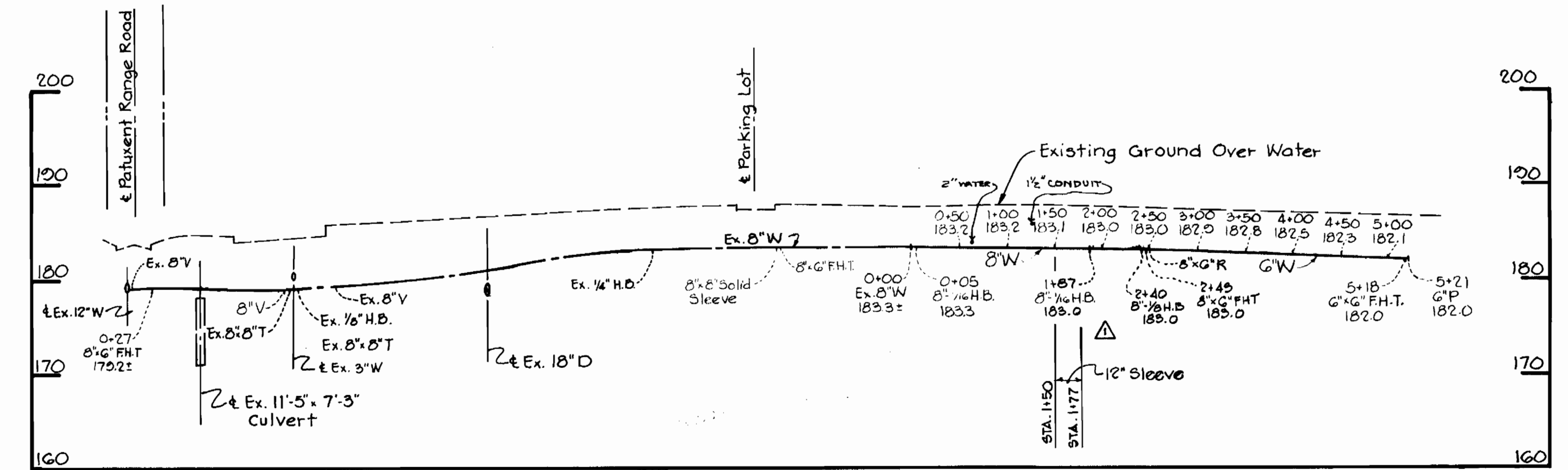
a. State Highway Administration	531-5533
b. Baltimore Gas and Electric Company	
Underground Electric Distribution - Customer Service	685-0123
c. Baltimore Gas and Electric Company	
Underground Gas Distribution - Customer Service	685-0123
d. Engineering - "Damage Control"	234-5621
e. Miss Utility	1-550-0100
f. Chesapeake and Potomac Telephone Company	725-2976
g. American Telephone and Telegraph - Cable Location Division	393-3553
h. Colonial Pipeline Company	781-4641
i. Bureau of Utilities Howard County	592-2366
- Trees are to be protected from damage to maximum extent. Trees located within the construction strip are not to be removed or damaged by the Contractor.
- Contractor shall remove trees, stumps and roots along line of excavation as directed by the Engineer. Payment for such removal shall be included in the unit price bid for excavation and backfill.
- Place regulation "Men Working" and warning signs as required to comply with Maryland State Highway Construction and Maintenance Operations.
- All water mains to be C.I.P. or D.I.P. unless otherwise noted.
- Top of all water mains to have a minimum of 3 1/2' cover unless otherwise noted.
- Valves adjacent to tees shall be strapped to tees.
- Block all fittings with concrete.
- Bury line elevations on fire hydrants shall be set to the elevations shown on the drawings. All fire hydrants shall be strapped and buttressed with concrete in accordance with standard details. Soil around the fire hydrant to be compacted in accordance with Section 5-15 of the Standard Specifications.
- The Contractor shall not operate any water main valves on the existing system.
- Profile stations shall be adjusted as necessary to conform to plan dimensions.
- No pipe shall be laid until lines of excavation have been brought to subgrade.
- The Contractor shall test pit the existing 8" water main at the location of of the relocated detector check prior to beginning construction operations.

SEDIMENT CONTROL MEASURES FOR THIS CONTRACT WILL BE IMPLEMENTED IN ACCORDANCE WITH ARTICLE 15 OF THE SPECIFICATIONS AND SITE DEVELOPMENT PLAN *SDP-02-120

HOWARD SOIL CONSERVATION DISTRICT : REVIEWED FOR HOWARD SOIL CONSERVATION DISTRICT AND MEETS TECHNICAL REQUIREMENTS
 DATE: 7/21/82
 U.S. SOIL CONSERVATION SERVICE
 THIS PLAN IS APPROVED FOR SOIL EROSION AND SEDIMENT CONTROL BY THE HOWARD SOIL CONSERVATION DISTRICT
 DATE: 7-21-82
 HOWARD SOIL CONSERVATION DISTRICT

Note: Bury line elevations on fire hydrants to be set to existing ground

PLAN
 Scale: 1"=50'



PROFILE
 Hor. 1"=100'
 Vert. 1"=10'

QUANTITIES			
Item	Estimated	As Built	Material/Supplier
8" Water	217 L.F.	244 L.F.	D.I.P./U.S. PIPE
6" Water	370 L.F.	318 L.F.	D.P./U.S. PIPE
Fire Hydrants	4	4	AMER. DARLING/ATP
8" GATE VALVE	1	1	MUELLER J&P

Trumbull Asphalt Plant
 Contract No. 44-1064-D
 DATE: 5-10-82

 PROFESSIONAL ENGR. NO. 9566

DEPARTMENT OF PUBLIC WORKS
 HOWARD COUNTY, MARYLAND
 Director of Public Works: *John F. Newman* 7-21-82
 Chief - Bureau of Engineering: *Robert Wood Park* 7/10/82
 Chief - Bureau of Utilities: *Robert Wood Park* 7/10/82
 Chief - Land Development Division: *Robert Wood Park* 7/10/82

CONTRACT NO. 44-1064-D
 PLAN AND PROFILE OF WATER MAIN
 Revised Water alignment Between Sta. 0+05 to Sta. 2+43
 No. 10-4-82 Date
 Revision

TRUMBULL ASPHALT PLANT
 ELECTION DISTRICT NO. 6
 DRAWING NO. 1
 SCALE AS SHOWN
 OCTOBER 4, 1982

1064/1 S

AS-BUILT NDY 10, 1982