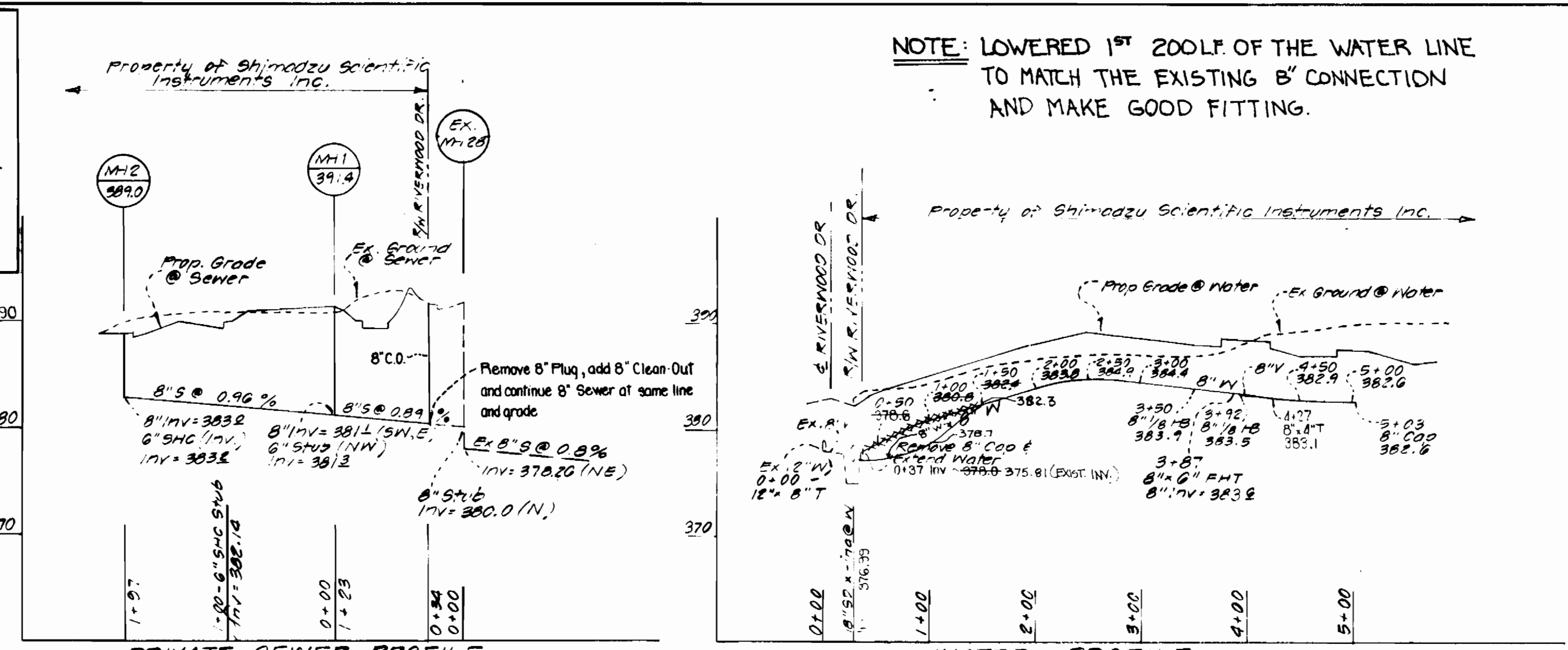


REVIEWED FOR HOWARD SOIL CONSERVATION DISTRICT AND MEETS TECHNICAL REQUIREMENT.
 Signature: *James M. Hale* DATE: 5-26-82
 U.S. SOIL CONSERVATION SERVICE
 THIS DEVELOPMENT PLAN IS APPROVED FOR SOIL EROSION AND SEDIMENT CONTROL BY THE HOWARD SOIL CONSERVATION DISTRICT.
 APPROVED: *William J. Roman* DATE: 5-26-82
 HOWARD S.C.D. DATE

NOTE: SEDIMENT CONTROL MEASURES FOR THIS CONTRACT WILL BE IMPLEMENTED IN ACCORDANCE WITH ARTICLE 15 OF THE STANDARD SPECIFICATIONS SDP-82-92

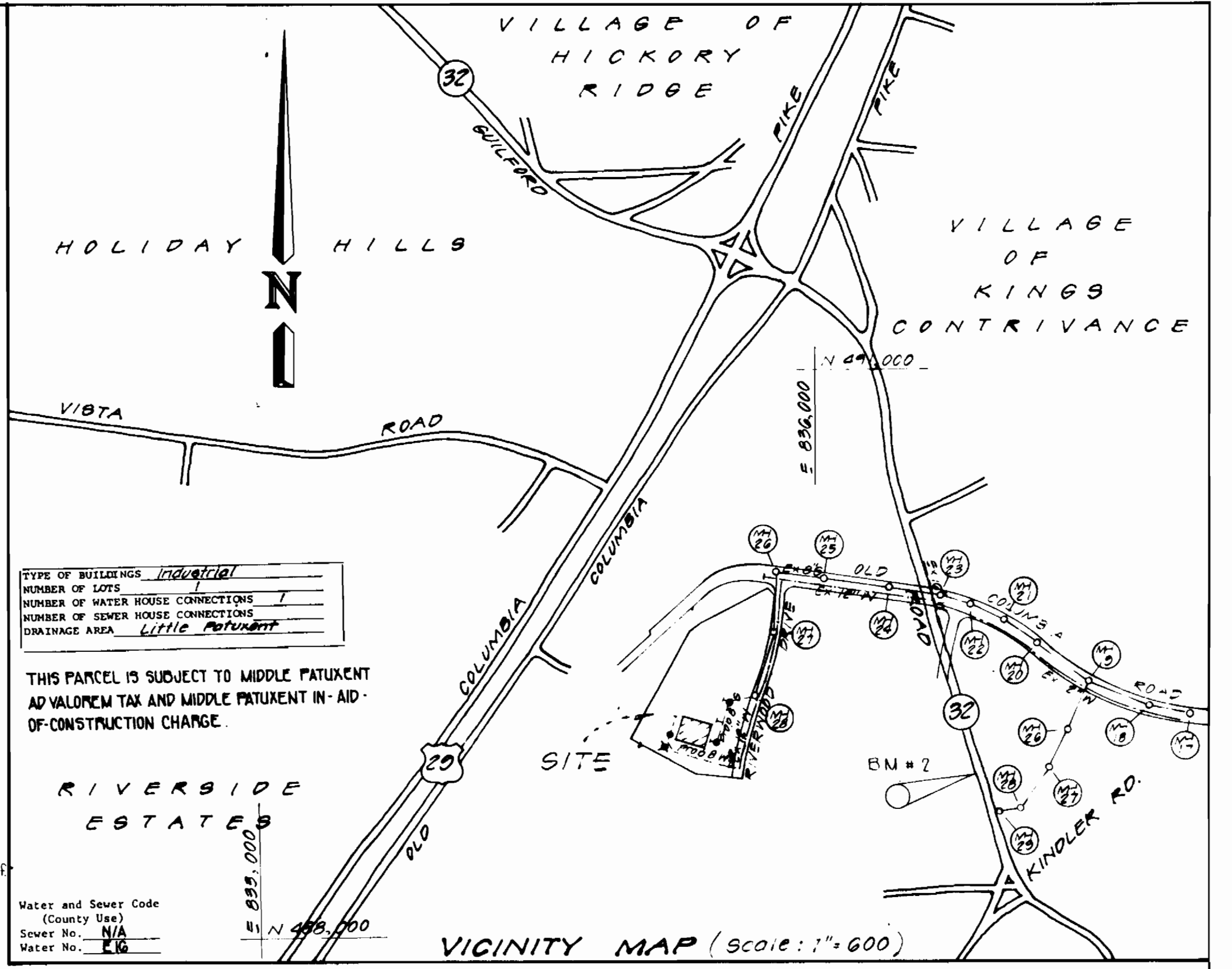


PRIVATE SEWER PROFILE PHASE I
 Scales: Horiz = 1"=100'
 Vert = 1"=10'
 NATHAN HOLTZWEIG 488 / 200

WATER PROFILE PHASE I
 Scales: Horiz = 1"=100'
 Vert = 1"=10'

DENCH MAPS:
 #1 BM = 2240001 Elev = 379.697
 Conc Monument 10' S of S Edge Rd
 N 486199.369 E 839811.396
 #2 BM = 2340002 Elev = 382.611
 Rebar 1.5' W of W Edge Rd .7' below surf
 N 488839.177 E 836802.852

NOTE: LOWERED 1ST 200LF OF THE WATER LINE TO MATCH THE EXISTING 8" CONNECTION AND MAKE GOOD FITTING.



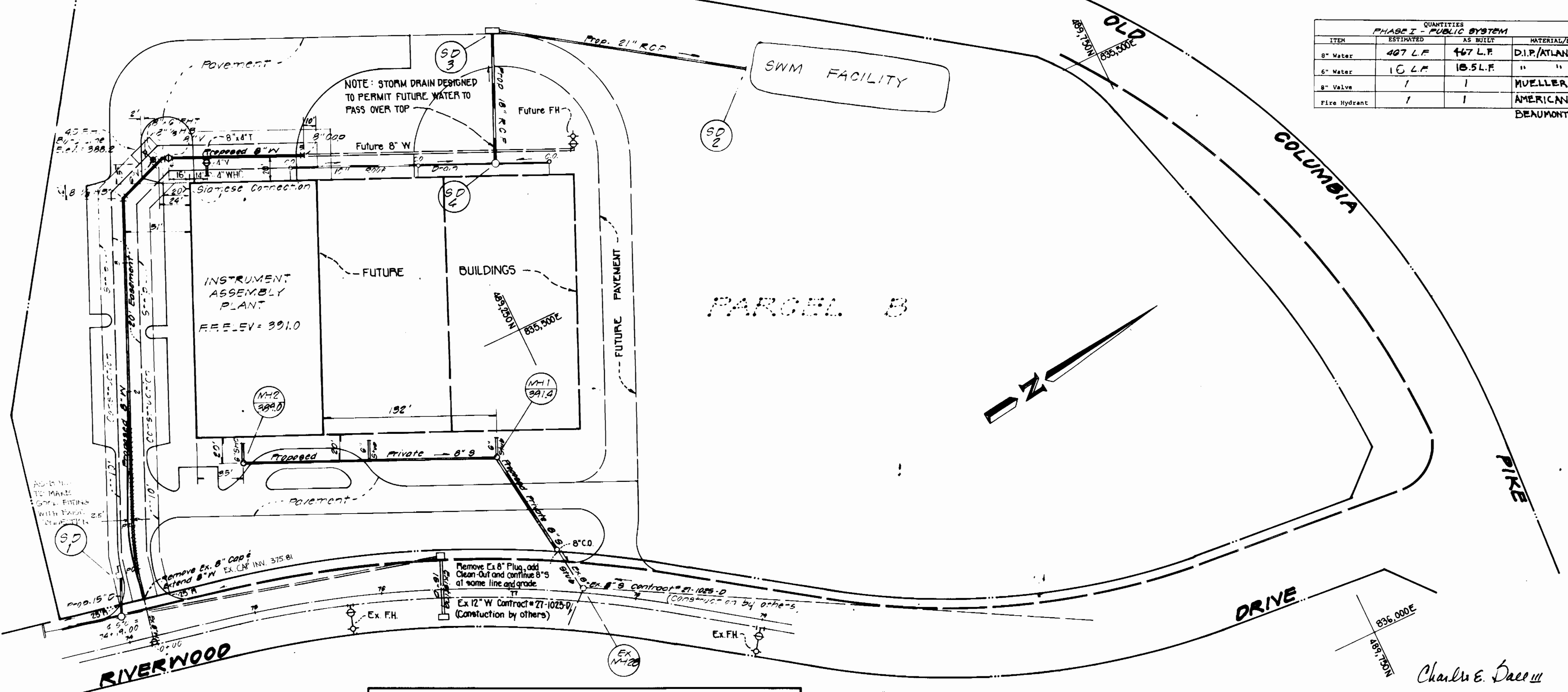
TYPE OF BUILDINGS	Industrial
NUMBER OF LOTS	1
NUMBER OF WATER HOUSE CONNECTIONS	1
NUMBER OF SEWER HOUSE CONNECTIONS	1
DRAINAGE AREA	Little Pasture

THIS PARCEL IS SUBJECT TO MIDDLE PATENT AD VALOREM TAX AND MIDDLE PATENT IN-AID OF CONSTRUCTION CHARGE.

Water and Sewer Code (County Use)
 Sewer No. N/A
 Water No. 16

ITEM	QUANTITIES		MATERIAL/SUPPLIER
	ESTIMATED	AS BUILT	
8" Water	407 L.F.	467 L.F.	D.I.P./ATLANTIC STATE
6" Water	16 L.F.	16.5 L.F.	" "
8" Valve	1	1	MUELLER
Fire Hydrant	1	1	AMERICAN FH. OF BEAUMONT TEXAS

- GENERAL NOTES
- Approximate location of existing mains are shown. The contractor shall take all necessary precautions to protect ex. mains & services and maintain uninterrupted supply. Any damage incurred shall be repaired immediately to the satisfaction of the engineer, at the contractor's expense.
 - All pipe elevations shown are invert elevations.
 - Clear all utilities by a minimum of 6". Clear all poles by 2'-0" min. or tunnel as required. Any cost incurred to the contractor for tunneling or bracing at poles shall be included in unit prices bid for excavation and backfill.
 - For details not shown on the drawings, use Howard Co. Std. details.
 - For materials & construction methods, use Howard Co. Std. specifications.
 - Contractor shall locate ex. utilities a minimum of 2 wks. in advance of construction operations in the vicinity of proposed utilities at his own expense.
 - Contractor shall notify the following utilities at least 5 working days before starting work shown on these plans:
 - Baltimore Gas & Electric Co. - Underground Electric Distribution - Customer Service - 685-0123
 - Engineering - "Damage Control" - 243-5621
 - Miss Utility - 1-559-0100
 - Chesapeake & Potomac (C&P) Telephone Co. - 725-9976
 - Bureau of Utilities, Howard Co. - 992-2366
 - All water mains shall be in accordance with Howard Co. Stds. & Specs.
 - Top of all water mains to have a min. of 3.5' cover unless otherwise noted.
 - Valves adjacent to tees or bends shall be strapped to tees or bends.
 - Block all fittings with concrete.
 - Bury line elevations on fire hydrants shall be set to the elevations shown on the drawings. All fire hydrants shall be strapped & buttressed with concrete in accordance with Std. details. Soil around the F.H. to be compacted in accordance with Section 5-15 of the Std. specifications.
 - The contractor shall not operate any water main valves on the ex. system.
 - All sewer mains shall be in accordance with Howard Co. Stds. & Specs.
 - The contractor shall provide a joint in all sewer mains within 2'-0" of exterior manhole wall.
 - All manholes shall be 4'-0" inside diameter, unless otherwise noted.
 - Water main & water house conn. must be placed so as to have at least 1' separation from the sanitary sewer as they pass above it.
 - Water & sewer service to these lots will be granted under the provisions of section 18.1228 of the Howard Co. Code.
 - All sanitary sewers are 8" diameter.
 - All sewer house connections are 6" to within 5' of building - See detail.
 - All sanitary sewer and water mains are public owned and maintained except as shown.
 - For details of site development not shown see sheet 1 of 2



DEPARTMENT OF PUBLIC WORKS
 HOWARD COUNTY, MARYLAND
 Director of Public Works: *John F. Nunn* DATE: 5-28-82
 Chief-Bureau of Engineering: *William J. Roman* DATE: 5-27-82
 Chief-Bureau of Utilities: *William J. Roman* DATE: 5-27-82
 Chief-Bureau of Planning and Zoning Administration: *William J. Roman* DATE: 5-27-82

CONTRACT NO. 44-1062-D
 PLAN AND PROFILE OF WATER AND SEWER
 RIVERS CORP. PARK - SECT 1, AREA 1, PARCEL B
 SHIMADZU SCIENTIFIC INSTRUMENTS INC.
 GUILFORD (N&S) ELECTION DISTRICT
 HOWARD COUNTY, MARYLAND
 OWNER: SHIMADZU SCIENTIFIC INSTRUMENTS INC.
 OAKLAND RIDGE INDUSTRIAL PARK
 9147-H RED BRANCH ROAD
 COLUMBIA, MARYLAND 21045
 SDP-82-92
 DRAWING NO. 1 OF 1
 SCALE 1"=50'
 DATE: JAN. 1982
 JNT #11-119-22 B
 SHEET 1 of 1

Johnson, Mirmiran & Thompson, P.A.
 ENGINEERS • PLANNERS • SURVEYORS • LANDSCAPE ARCHITECTS
 1751 FORT WARD • BALTIMORE, MARYLAND • 21202 • (301) 434-7000
 175 MARLBOROUGH WEST • WASHINGTON, D.C. • 20004 • (202) 811-7000
 1200 YORK ROAD • BALTIMORE, MARYLAND • 21003 • (301) 881-6000

1062/1 WS

AS-BUILT JULY, 1983