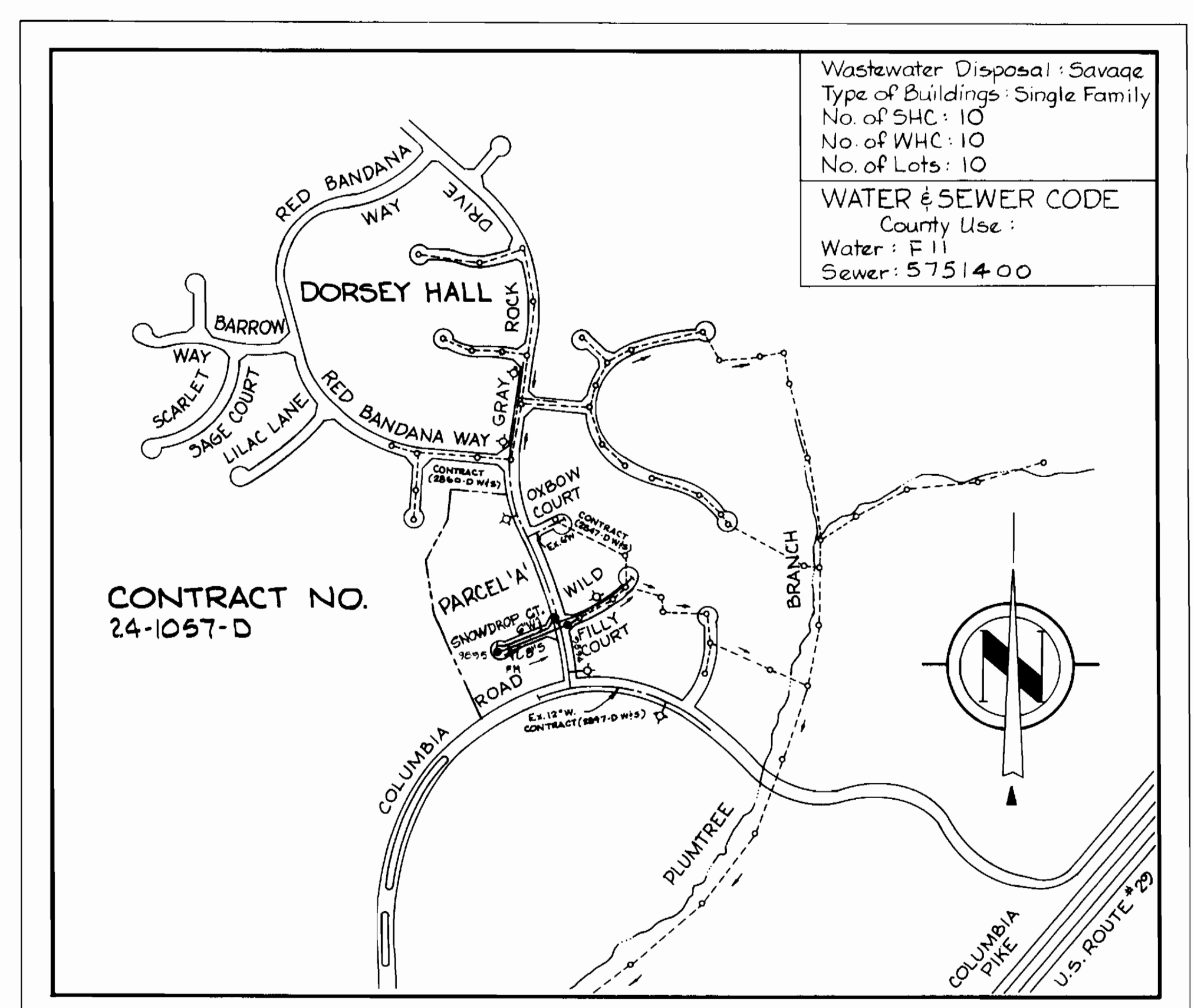


Note:
Original grade shown on Profile was taken from aerial photography prepared by Aero Service Corp. and verified by field survey in March 1982.

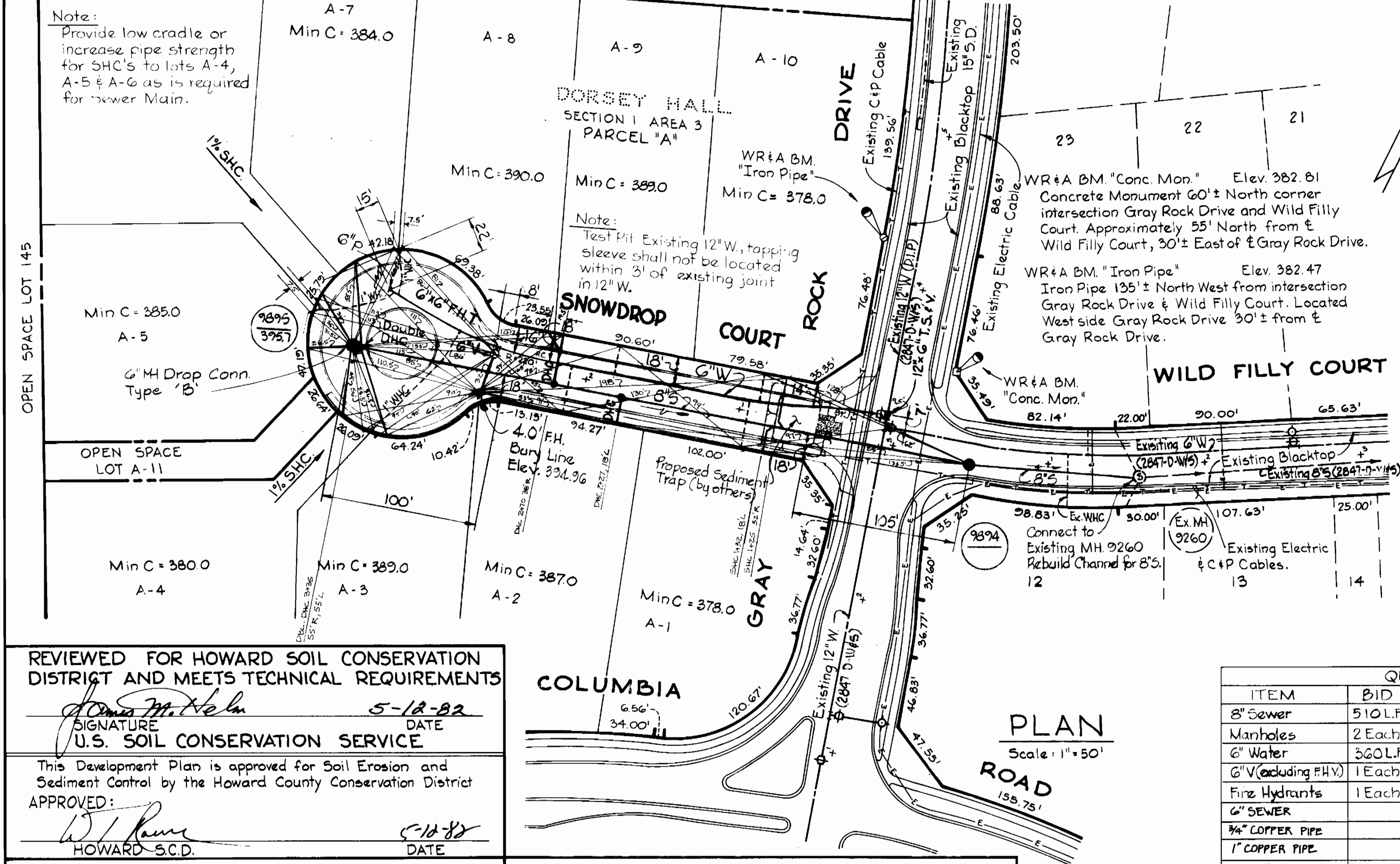
PROFILE: Scale: H: 1"=100'
V: 1"=10'



Wastewater Disposal: Sewage
Type of Buildings: Single Family
No. of SHC: 10
No. of WHC: 10
No. of Lots: 10
WATER & SEWER CODE
County Use:
Water: F.11
Sewer: 57514.00

CONTRACT NO. 24-1057-D

VICINITY MAP
Scale: 1"=600'



PLAN
Scale: 1"=50'

GENERAL NOTES

- APPROXIMATE LOCATION OF EXISTING MAINS SHOWN. THE CONTRACTOR SHALL TAKE ALL NECESSARY PRECAUTIONS TO PROTECT EXISTING MAINS AND SERVICES AND MAINTAIN UNINTERRUPTED SUPPLY. ANY DAMAGE INCURRED SHALL BE REPAIRED IMMEDIATELY TO THE SATISFACTION OF THE ENGINEER, AT THE CONTRACTOR'S EXPENSE.
- ALL PIPE ELEVATIONS SHOWN ARE INVERT ELEVATIONS.
- CONTRACTOR SHALL LOCATE EXISTING UTILITIES A MINIMUM OF TWO WEEKS IN ADVANCE OF CONSTRUCTION OPERATIONS IN THE VICINITY OF UTILITIES AT HIS EXPENSE.
- FOR DETAILS NOT SHOWN ON THE DRAWINGS, USE HOWARD COUNTY STANDARD DETAILS.
- FOR MATERIALS AND CONSTRUCTION REQUIREMENTS, USE HOWARD COUNTY STANDARD SPECIFICATIONS.
- ALL HORIZONTAL CONTROLS ARE BASED ON MARYLAND STATE COORDINATES.
- ALL VERTICAL CONTROLS ARE BASED ON UGDS DATUM.
- CLEAR ALL UTILITIES BY A MINIMUM OF 8". CLEAR ALL POLES BY 2'-0" MINIMUM OR TUNNEL AS REQUIRED.
- THE COST FOR TUNNELING OR BRACING POLES SHALL BE INCLUDED IN APPROPRIATE UNIT PRICES BID.
- CONTRACTOR SHALL NOTIFY THE FOLLOWING UTILITIES OR AGENCIES AT LEAST FIVE (5) WORKING DAYS BEFORE STARTING WORK SHOWN ON THESE PLANS.
 - BALTIMORE GAS AND ELECTRIC COMPANY
UNDERGROUND ELECTRIC AND GAS DISTRIBUTION CUSTOMER SERVICE - 686-0123
DAMAGE CONTROL - 234-5621
"MISS UTILITY" - 1-559-0100
 - CHESAPEAKE & POTOMAC TELEPHONE COMPANY - 725-9976
 - AMERICAN TELEPHONE AND TELEGRAPH - CABLE LOCATION DIVISION - 388-9555
 - BUREAU OF UTILITIES HOWARD COUNTY - 982-2366
- TREES ARE TO BE PROTECTED FROM DAMAGE TO MAXIMUM EXTENT. TREES LOCATED WITHIN THE CONSTRUCTION STRIP ARE NOT TO BE REMOVED OR DAMAGED BY THE CONTRACTOR.
- CONTRACTOR SHALL REMOVE TREES, STUMPS AND ROOTS ALONG LINE OF EXCAVATION AS DIRECTED BY THE ENGINEER. PAYMENTS FOR SUCH REMOVAL SHALL BE INCLUDED IN APPROPRIATE UNIT PRICES BID.
- PLACE REGULATION "MEN WORKING" AND WARNING SIGNS AS REQUIRED TO COMPLY WITH MARYLAND STATE HIGHWAY ADMINISTRATION MANUAL OF TRAFFIC CONTROL FOR HIGHWAY CONSTRUCTION AND MAINTENANCE OPERATIONS.
- ALL WATER MAINS TO BE C.I.P. OR D.I.P. UNLESS OTHERWISE NOTED.
- TOP OF ALL WATER MAINS SHALL HAVE A MINIMUM OF 3 1/2 FEET OF COVER UNLESS OTHERWISE NOTED.
- VALVES SHALL BE STRAPPED WHERE APPLICABLE.
- BLOCK ALL FITTINGS WITH CONCRETE.
- BURY LINE ELEVATIONS ON FIRE HYDRANTS SHALL BE SET TO THE ELEVATIONS SHOWN ON THE DRAWINGS. ALL FIRE HYDRANTS SHALL BE STRAPPED AND BUTTRESSED WITH CONCRETE IN ACCORDANCE WITH STANDARD DETAILS, SOIL AROUND THE FIRE HYDRANT TO BE COMPACTED IN ACCORDANCE WITH THE STANDARD SPECIFICATIONS.
- WATER HOUSE CONNECTIONS SHALL BE FOR AN INSIDE METER SETTING.
- THE CONTRACTOR SHALL NOT OPERATE ANY WATER MAIN VALVES ON THE EXISTING SYSTEM.
- ALL SEWER MAINS SHALL BE C.S.P.X., V.C.P.X., A.C.P. OR P.V.C. UNLESS OTHERWISE NOTED.
- ALL MANHOLES SHALL BE 4'-0" INSIDE DIAMETER, UNLESS OTHERWISE NOTED.
- THE CONTRACTOR SHALL PROVIDE A JOINT IN ALL SEWER MAINS WITHIN 2'-0" OF EXTERIOR MANHOLE WALLS.

QUANTITIES			
ITEM	BID	AS-BUILT	MATERIAL/SUPPLIER
8" Sewer	510 L.F.	510.5	P.V.C. / A/P W/5 CERTAIN-TECO SUPPLY
Manholes	2 Each	2	ATLANTIC PRECAST CONC. CORP.
6" Water	360 L.F.	365	D.I.P. C.I. P. / A/P W/5 POLYBLENDE / SUPPLY
6" V (including F.H.V.)	1 Each	1	MULLER / A/P W/5 AMERICAN BRUNING / A/P W/5 VALVE / HYDRANT / SUPPLY
Fire Hydrants	1 Each	1	P.V.C. / A/P W/5 CERTAIN-TECO / SUPPLY
3/4" COPPER PIPE		156.5	" " " "
1" COPPER PIPE		162	" " " "
TS-1V		1	" " " "

REVIEWED FOR HOWARD SOIL CONSERVATION DISTRICT AND MEETS TECHNICAL REQUIREMENTS
 Signature: *James M. Helm* DATE: 5-18-82
 U.S. SOIL CONSERVATION SERVICE

This Development Plan is approved for Soil Erosion and Sediment Control by the Howard County Conservation District
 APPROVED: *W. J. Rame* DATE: 5-18-82
 HOWARD S.C.D.

DEPARTMENT OF PUBLIC WORKS
 HOWARD COUNTY, MARYLAND
 Director: *W. F. Nimmey* 5-14-82
 Chief: *W. J. Rame* 5-14-82
 Chief: *R. M. Berman* 5-13-82

Sediment Control Measures for this Contract will be implemented in accordance with Article 15 of the Standard Specifications and Road Construction Plan F-82-101.
 WHITMAN, REQUARDT AND ASSOCIATES
 ENGINEERS
 2315 ST. PAUL ST.
 BALTIMORE, MARYLAND

CONTRACT NO. 24-1057-D

PLAN AND PROFILE OF WATER & SEWER MAINS

DORSEY HALL
 ELECTION DISTRICT ELLICOTT CITY NO. 2

Dorsey Hall - Parcel "A"
 Section 1 Area 3 PHASE I
 Contract No. 24-1057-D
 F.B. #6618
 DRAWING NO. 1 OF 1
 SCALE AS SHOWN
 24-516/646-5