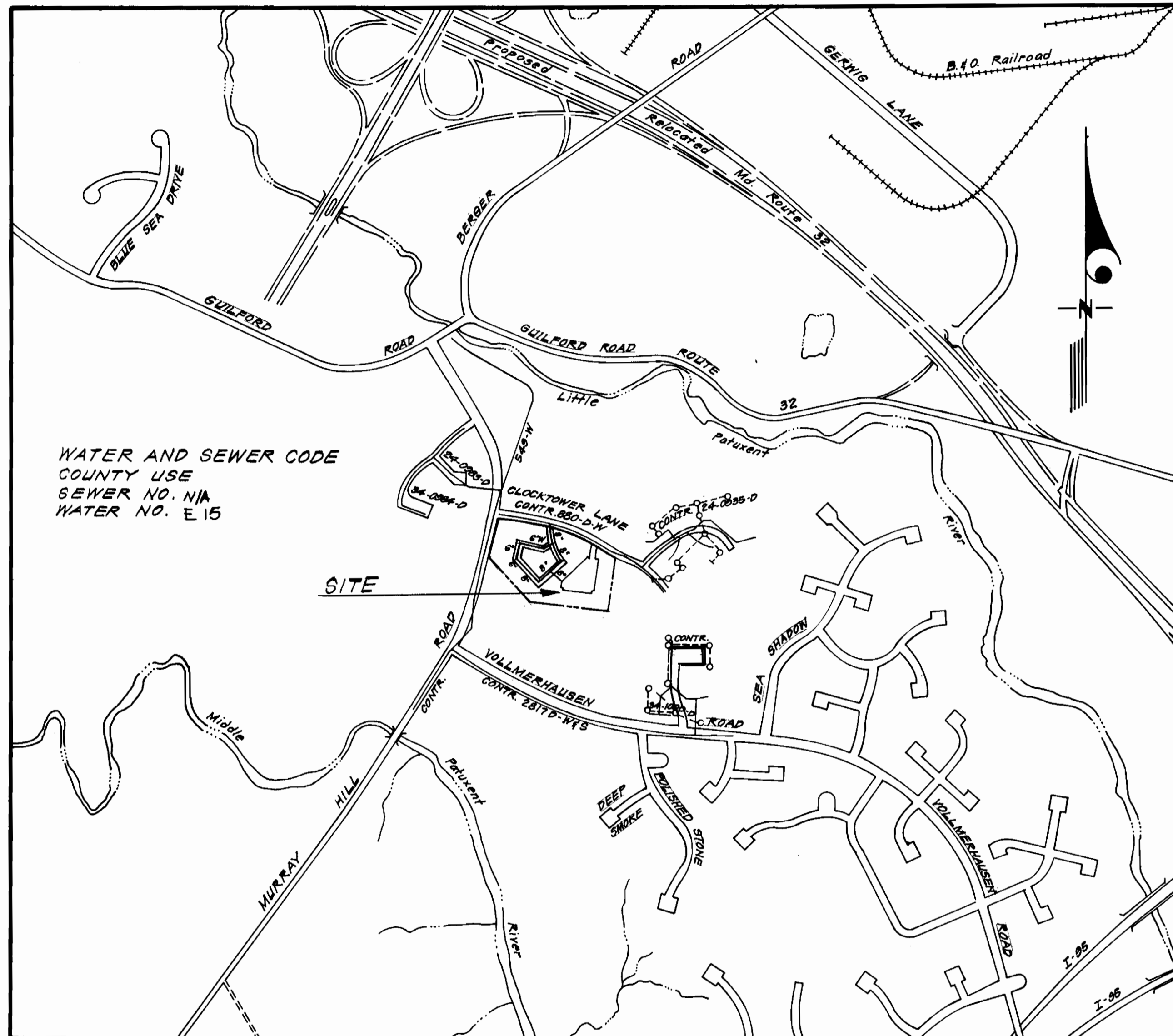


TYPE OF BUILDINGS - APARTMENTS
 NUMBER OF UNITS - 176
 NUMBER OF WHC - 10
 NUMBER OF SHC - N/A
 DRAINAGE AREA - LITTLE PATUXENT & MIDDLE PATUXENT (BLDG'S AB-1, AB-2, AA-1, AA-2, AB-3 & AA-4 ARE IN MIDDLE PATUXENT DRAINAGE AREA)



VICINITY MAP
 Scale: 1"=600'

Sediment Control Measures will be implemented in accordance with Article No. 15 of the Specifications & with SDF B2-25 C ; Drawing 3 , Sediment & Erosion Control.

REVIEWED FOR HOWARD SOIL CONSERVATION DISTRICT AND MEETS TECHNICAL REQUIREMENT.

James M. Nader 8-4-82
 SIGNATURE DATE

U.S. SOIL CONSERVATION SERVICE

This Development Plan is approved for Soil Erosion and Sediment Control by the Howard Soil Conservation District.

APPROVED:
William T. Rowe 8-4-82
 HOWARD S.C.D. DATE

DEPARTMENT OF PUBLIC WORKS
 HOWARD COUNTY, MARYLAND
F. Nimm 8-10-82
 DIRECTOR OF PUBLIC WORKS-DATE
William T. Rowe 8-14-82
 CHIEF BUREAU OF ENGINEERING-DATE
 CHIEF BUREAU OF UTILITIES-DATE
 CHIEF LAND DEVELOPMENT DIVISION-DATE

CFE CLARK • FINEFROCK & SACKETT
 ENGINEERS • PLANNERS • SURVEYORS
 11315 LOCKWOOD DRIVE • SILVER SPRING, MARYLAND • (301) 893-3400

WATER AND SEWER CODE
 COUNTY USE
 SEWER NO. N/A
 WATER NO. E 15

SITE

CONTRACT NO. 44-1055 D W
 VILLAGE OF KINGS CONTRIVANCE
 SECTION 3 AREA I
 HOWARD COUNTY, MARYLAND
 DEPARTMENT OF PUBLIC WORKS

GENERAL NOTES

- Approximate location of existing mains are shown. The contractor shall take all necessary precautions to protect existing mains and services and maintain uninterrupted supply. Any damage incurred shall be repaired immediately to the satisfaction of the Inspector, at the contractor's expense.
- All horizontal controls are based on Maryland State Coordinates.
- All vertical controls are based on U.S.G.S. Datum.
- All pipe elevations shown are invert elevations.
- Clear all utilities by a minimum of 6" clear all poles by 2'-0" minimum or tunnel as required. Any cost incurred to the contractor for tunneling or bracing at poles shall be included in unit prices bid for excavation and backfill.
- For details not shown on the drawings use Howard County Standard Details.
- For materials and construction methods use Howard County Standard Specifications.
- Contractor shall locate existing utilities a minimum of two (2) weeks in advance of construction operations in the vicinity of proposed utilities at his own expense.
- Contractor shall notify the following utilities or agencies at least five (5) working days before starting work shown on these plans.
 State Highway Administration - 531-5533
 Baltimore Gas & Electric Company - Underground Electric Distribution
 Customer Service - 685-0123
 Baltimore Gas & Electric Company - Underground Gas Distribution
 Customer Service - 685-0123
 Engineering - Damage Control - 234-5621
 "Miss Utility" - 1-559-0100
 Chesapeake & Potomac (C & P) Telephone Company - 725-9976
 American Telephone and Telegraph - Cable Location Division - 393-3553
 Colonial Pipeline Company - 781-4641
 Bureau of Utilities Howard County - 992-2366
- Trees are to be protected from damage to maximum extent. Trees located within the construction strip are not to be removed or damaged by the contractor.
- Contractor shall remove trees, stumps, and roots along line of excavation as directed by the Inspector. Payment for such removal shall be included in the unit price bid for excavation and backfill.
- Place regulation "Men Working" and warning signs as required to comply with Maryland State Highway Administration Manual of Traffic Control for Highway Construction and Maintenance Operations.
- All water mains to be C.I.P. or D.I.P. unless otherwise noted.
- Top of all water mains to have a minimum of 3-1/2' cover unless otherwise noted.
- Valves adjacent to tees shall be strapped to tees.
- Block all fittings with concrete.
- Bury line elevations on fire hydrants shall be set to the elevations shown on the drawings. All fire hydrants shall be strapped and buttressed with concrete in accordance with standard details. Soil around the fire hydrant to be compacted in accordance with Section 5-15 of the Standard Specifications.
- All water house connections shall be for an inside meter setting.
- The contractor shall not operate any water main valves on the existing system.
- The contractor shall provide a joint in all sewer mains within 2'-0" of exterior manhole wall.
- Water main and water house connection lines must have a minimum of one foot separation from the sanitary sewer and sewer house connections as they cross. Except at crossings, water and sewer lines shall have a minimum horizontal separation of 10'.

QUANTITIES			
ITEM	ESTM'D	AS-BUILT	MATERIAL/SUPPLIER
6" W	431 LF	5045	D.I.P. ATLANTIC
8" W	772 LF	773	D.I.P. ATLANTIC
M.H.'s	3 EA.	3	M.H.
8" V	3 EA.	3	M.H.
6" V (Equal M.H.)	2 EA.	2	M.H.

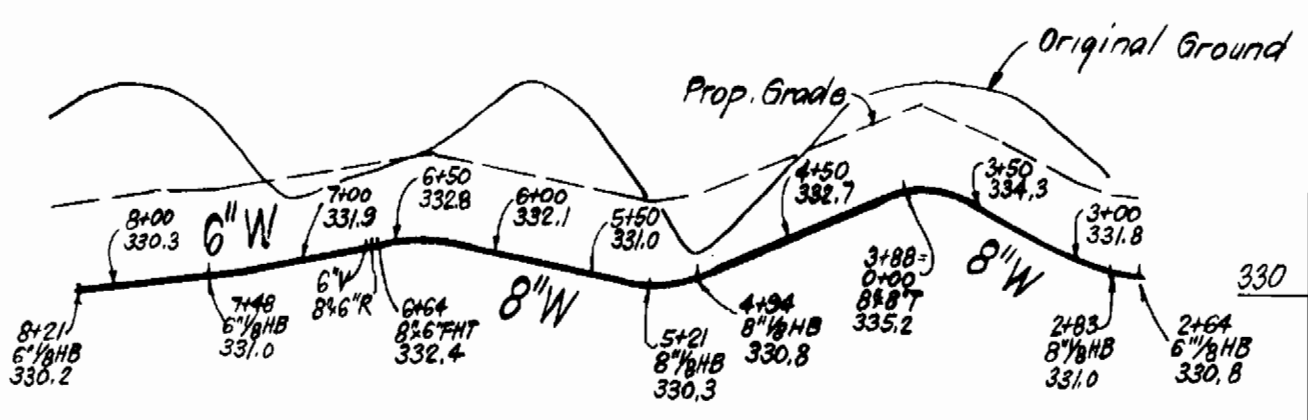
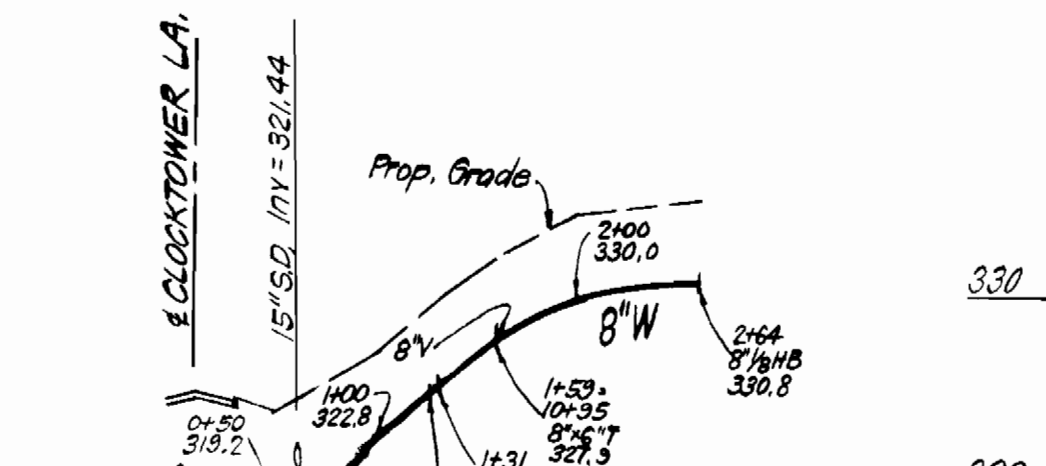
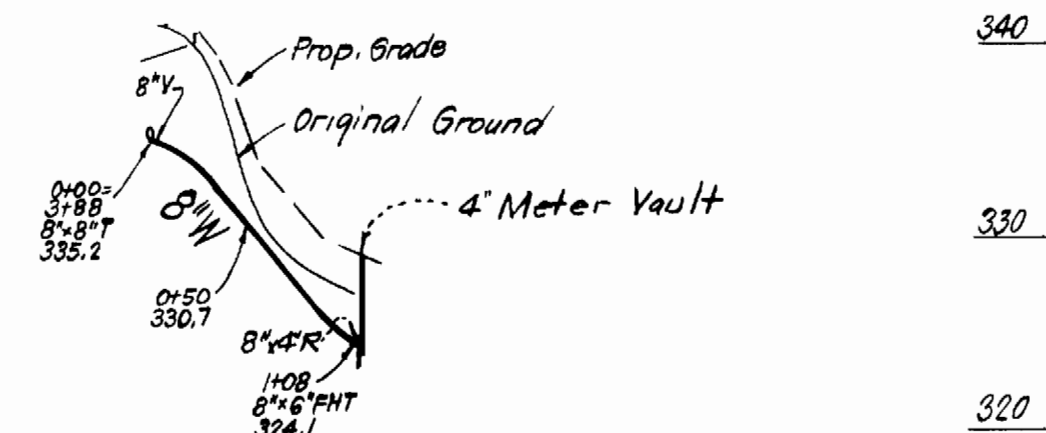
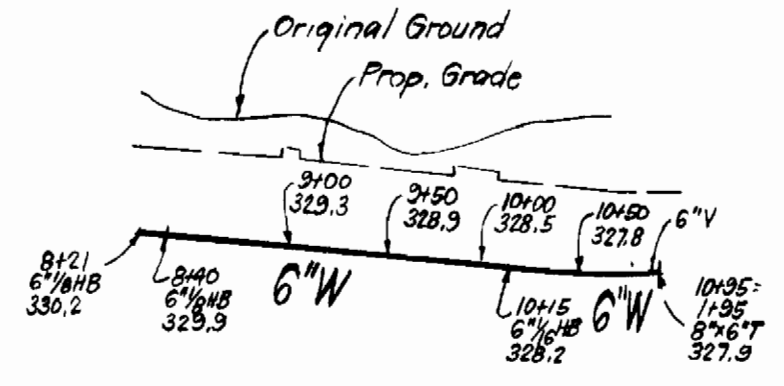
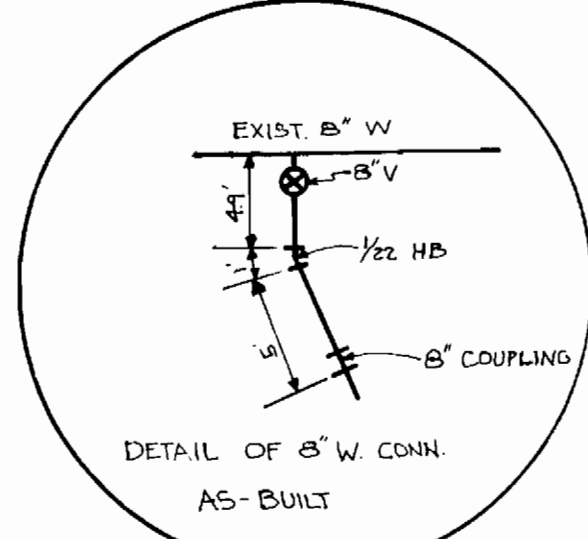
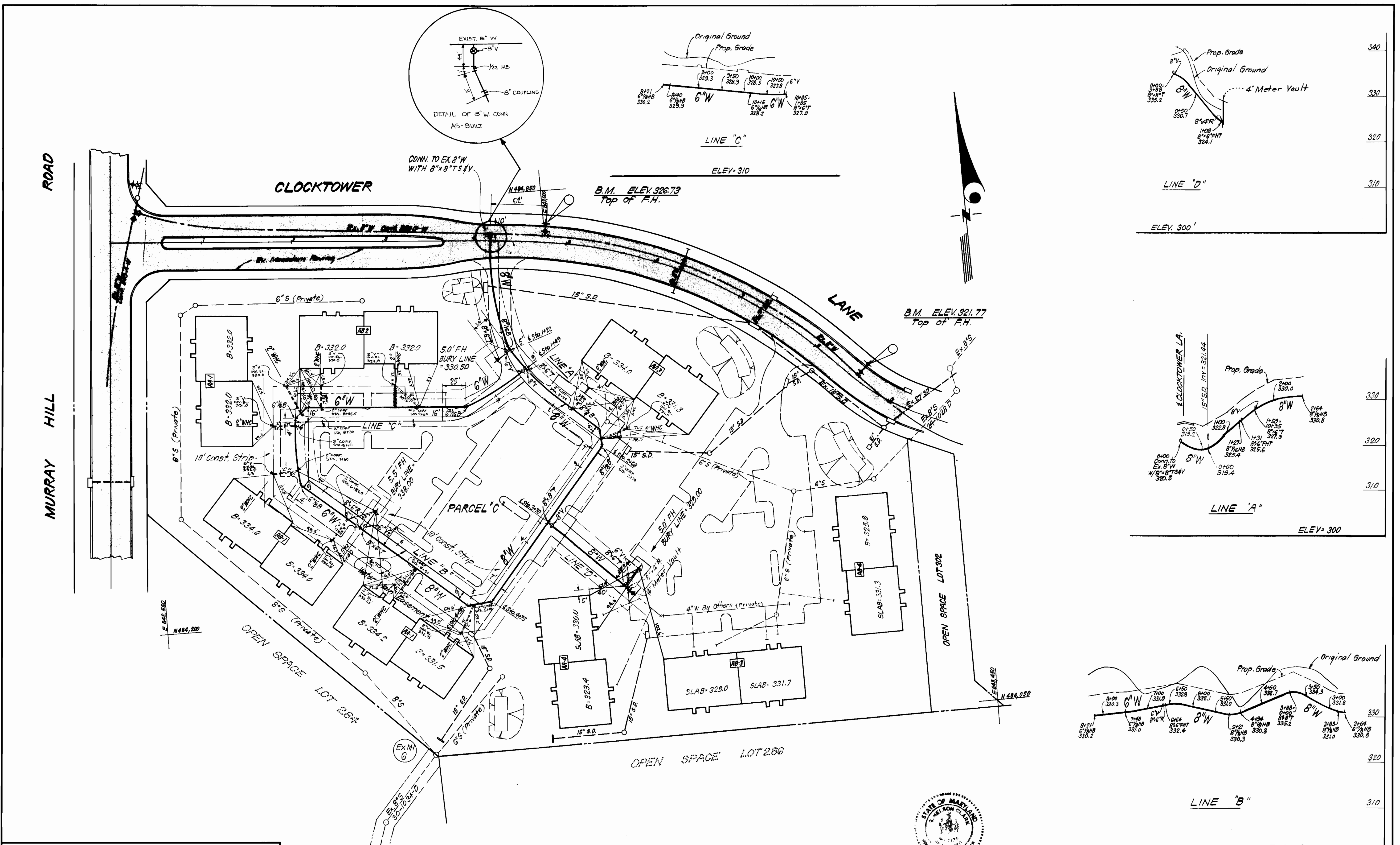


John C. Clark
 12-7-81

COLUMBIA
 PARCEL 'C'
 VILLAGE OF KINGS CONTRIVANCE
 SECTION 3 AREA I

CLARK • FINEFROCK & SACKETT ENGINEERS • PLANNERS • SURVEYORS	CONTRACT NO. 44-1055-D	TITLE SHEET	COLUMBIA VILLAGE OF KINGS CONTRIVANCE 6TH ELECTION DISTRICT	DRAWING NO. 1	SCALE
				OF 2	As Shown

AS-BUILT JULY, 1983



NOTE: REFERENCE DIMENSIONS WERE TAKEN FROM BARED WALL & WALL LAYOUTS ON THE FOUNDATION, THEREFORE, FINAL DIMENSIONS MAY VARY SLIGHTLY ON FINISHED BUILDING WALLS.

PROFILE SCALE
HOR. 1"=100'
VERT. 1"=10'

DEPARTMENT OF PUBLIC WORKS
HOWARD COUNTY, MARYLAND
 Director: *Mark F. Nemy* 8-10-81
 Chief, Bureau of Engineering: *W. J. ...*
 Chief, Bureau of Utilities: *...*
 Chief, Land Development: *...*

CLARK • FINEFROCK & SACKETT
 ENGINEERS • PLANNERS • SURVEYORS
 11315 LOCKWOOD DRIVE • SILVER SPRING, MARYLAND • (301) 593-3400

CONTRACT NO. 44-1055 D

PLAN OF
WATER & SEWER MAINS

COLUMBIA
VILLAGE OF KINGS CONTRIVANCE
6TH ELECTION DISTRICT

DRAWING NO. 2 OF 2
SCALE 1"=50'

AS-BUILT JULY, 1985