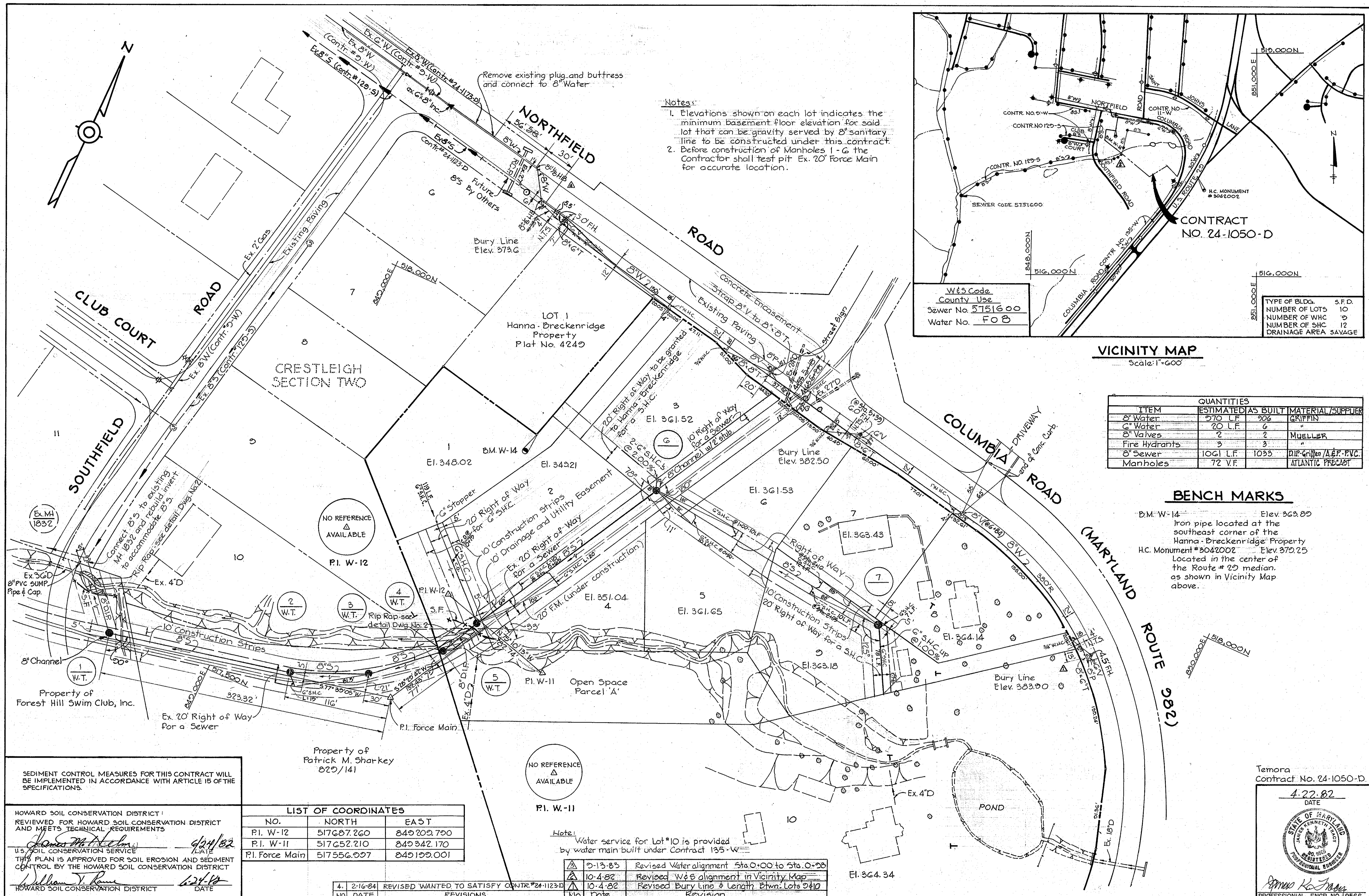
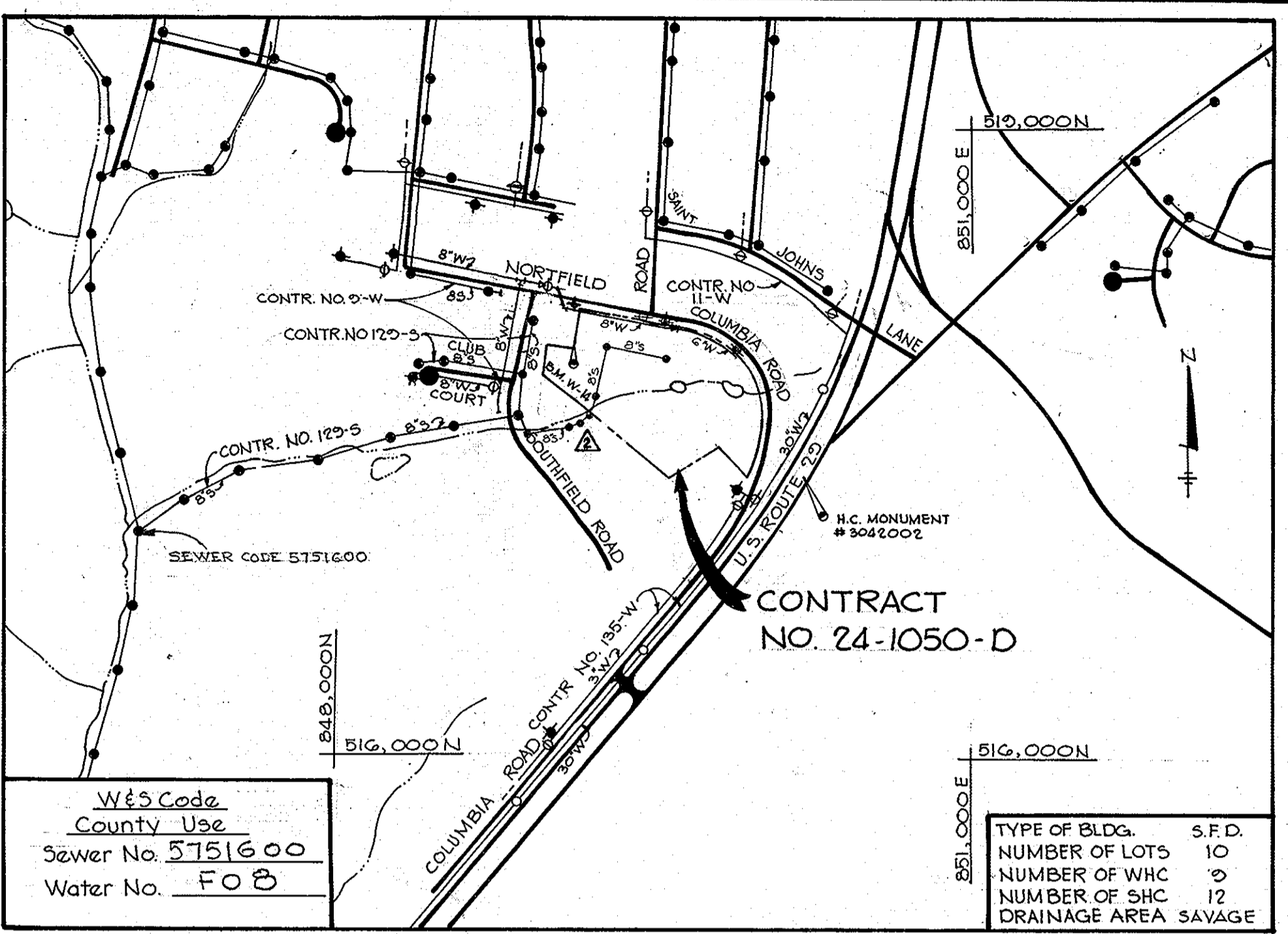


1050/1 WS



Notes:
 1. Elevations shown on each lot indicates the minimum basement floor elevation for said lot that can be gravity served by 8" sanitary line to be constructed under this contract.
 2. Before construction of Manholes 1-6 the Contractor shall test pit Ex. 20' Force Main for accurate location.



VICINITY MAP
Scale: 1"=600'

ITEM	QUANTITIES		MATERIAL/SUPPLIER
	ESTIMATED	AS BUILT	
8" Water	270 L.F.	206	GRIFFIN
6" Water	20 L.F.	6	"
8" Valves	2	2	MUELLER
Fire Hydrants	3	3	"
8" Sewer	1061 L.F.	1035	DIP-Griffin/A&P-PVC.
Manholes	72 V.F.		ATLANTIC PRECAST

BENCH MARKS

BM-W-14 Elev. 363.80
 Iron pipe located at the southeast corner of the Hanna-Breckenridge Property
 H.C. Monument #3042002 Elev. 370.25
 Located in the center of the Route # 29 median, as shown in Vicinity Map above.

SEDIMENT CONTROL MEASURES FOR THIS CONTRACT WILL BE IMPLEMENTED IN ACCORDANCE WITH ARTICLE 15 OF THE SPECIFICATIONS.

HOWARD SOIL CONSERVATION DISTRICT:
 REVIEWED FOR HOWARD SOIL CONSERVATION DISTRICT AND MEETS TECHNICAL REQUIREMENTS
 U.S. SOIL CONSERVATION SERVICE
 THIS PLAN IS APPROVED FOR SOIL EROSION AND SEDIMENT CONTROL BY THE HOWARD SOIL CONSERVATION DISTRICT

LIST OF COORDINATES

NO.	NORTH	EAST
P.I. W-12	517687.260	849209.700
P.I. W-11	517652.210	849342.170
P.I. Force Main	517556.007	849199.001

NO.	DATE	REVISIONS
4.	2-16-84	REVISED WANTED TO SATISFY CONTR.#24-1123-D
1.	2-13-83	Revised Water alignment Sta. 0+00 to Sta. 0+20
2.	10-4-82	Revised W&S alignment in Vicinity Map
3.	10-4-82	Revised Bury Line & Length Btwn. Lots 2&10

RIEMER-TRACY & ASSOCIATES, INC.
 8659 BALTIMORE NATIONAL PIKE
 ELLICOTT CITY, MARYLAND 21043

DEPARTMENT OF PUBLIC WORKS
 HOWARD COUNTY, MARYLAND
 CHIEF LAND DEVELOPMENT DIVISION
 DIRECTOR OF PUBLIC WORKS DATE CHIEF, BUREAU OF ENGINEERING DATE CHIEF, BUREAU OF UTILITIES DATE

CONTRACT NO. 24-1050-D

PLAN OF WATER AND SEWER MAINS

TEMORA ELECTION DISTRICT ELLICOTT CITY NO. 2

DRAWING NO. 1 OF 2 SCALE 1"=50'

Temora Contract No. 24-1050-D
 DATE 4-22-82

GENERAL NOTES

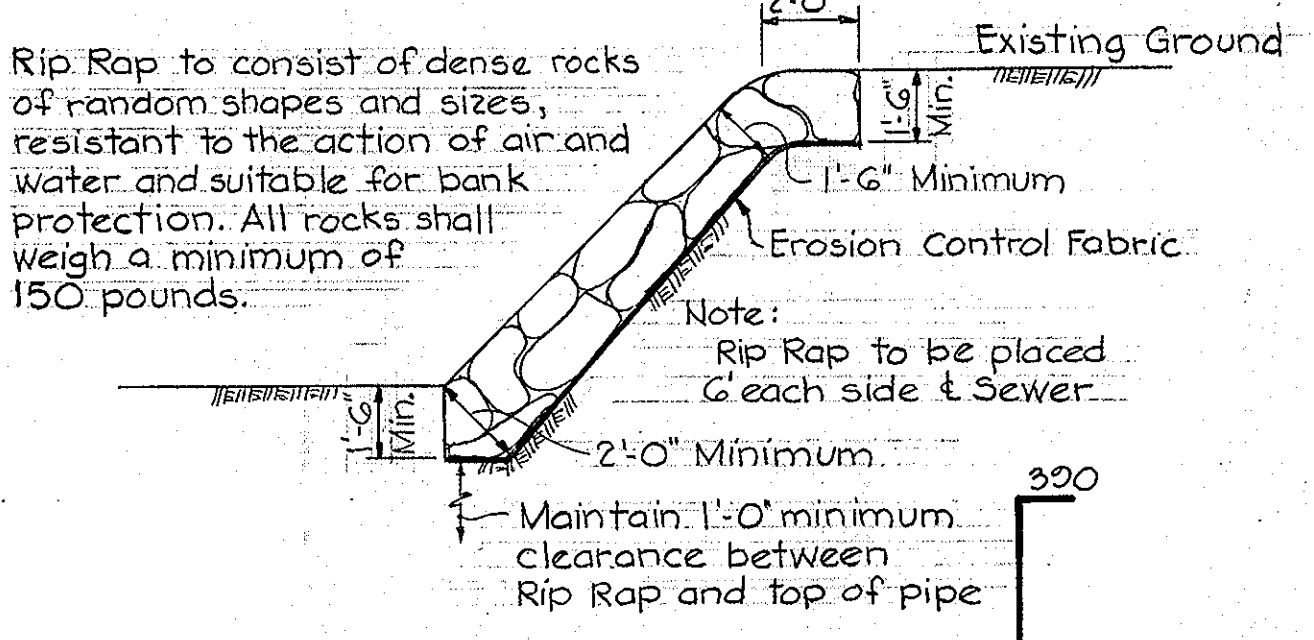
- Approximate location of existing mains are shown. The contractor shall take all necessary precautions to protect existing mains and services and maintain uninterrupted supply. Any damage incurred shall be repaired immediately to the satisfaction of the Engineer, at the Contractor's expense.
- All horizontal controls are based on Maryland State Coordinates.
- All vertical controls are based on U.S.G.S. Datum.
- All pipe elevations are invert elevations.
- Clear all utilities by a minimum of 6'. Clear all poles by 2'-0" minimum or tunnel as required. Any cost incurred to the contractor for tunneling or bracing at poles shall be included in unit prices bid for excavation and backfill.
- For details not shown on the drawings use Howard County Standard Details.
- For materials and construction methods use Howard County Standard Specifications.
- Contractor shall locate existing utilities a minimum of two (2) weeks in advance of construction operations in the vicinity of proposed utilities at his own expense.
- Contractor shall notify the following utilities or agencies at least five (5) working days before starting work shown on these plans:

a. State Highway Administration	531-5533
b. Baltimore Gas and Electric Company Underground Electric Distribution - Customer Service	685-0123
c. Baltimore Gas and Electric Company Underground Gas Distribution - Customer Service	685-0123
d. Engineering - "Damage Control"	234-5621
e. "Miss Utility"	1-552-0100
f. Chesapeake and Potomac Telephone Company	725-9976
g. American Telephone and Telegraph Cable Location Division	303-3553
h. Colonial Pipeline Company	781-4641
i. Bureau of Utilities Howard County	992-2366
- Trees are to be protected from damage to maximum extent. Trees located within the construction strip are not to be removed or damaged by the contractor.
- Contractor shall remove trees, stumps and roots along line of excavation as directed by the Engineer. Payment for such removal shall be included in the unit price bid for excavation and backfill.
- Place regulation "Men Working" and warning signs as required to comply with Maryland State Highway Administration Manual of Traffic Control for Highway Construction and Maintenance Operations.
- All water mains to be C.I.P. or D.I.P. unless otherwise noted.
- Top of all water mains to have a minimum of 3'-1/2" cover unless otherwise noted.
- Valves adjacent to trees shall be strapped to trees.
- Block all fittings with concrete.
- Bury line elevations on fire hydrants shall be set to the elevations shown on the drawings. All fire hydrants shall be strapped and buttressed with concrete in accordance with standard details. Soil around the fire hydrant to be compacted in accordance with Section 5-15 of the Standard Specifications.
- All water house connections shall be for an inside meter setting.
- The contractor shall not operate any water main valves on the existing system.
- All sewer mains shall be C.S.P.X., V.C.P.X. or A.C.P. Class 2400 unless otherwise noted.
- The contractor shall provide a joint in all sewer mains within 2'-0" of exterior manhole wall.
- All manholes shall be 4'-0" inside diameter, unless otherwise noted.
- Force mains shall be D.I.P. only.
- Manholes shown with 12" and 16" walls are brick manholes only.
- Manholes designated W.T. in plan and profile shall have watertight frame and covers, Standard Detail 5-12 (RCR-63A). Where watertight manhole frame and cover is used, set top of frame 1'-0" above finished grade.
- House(s) with the symbol "C.N.S." indicates that cellar can not be served.
- All water house connections shall have a minimum vertical clearance of 12" above all sanitary sewer crossings.
- All sanitary sewer house connections shall have a minimum vertical clearance of 12" below all water main crossings.
- Profile stations shall be adjusted as necessary to conform to plan dimensions.

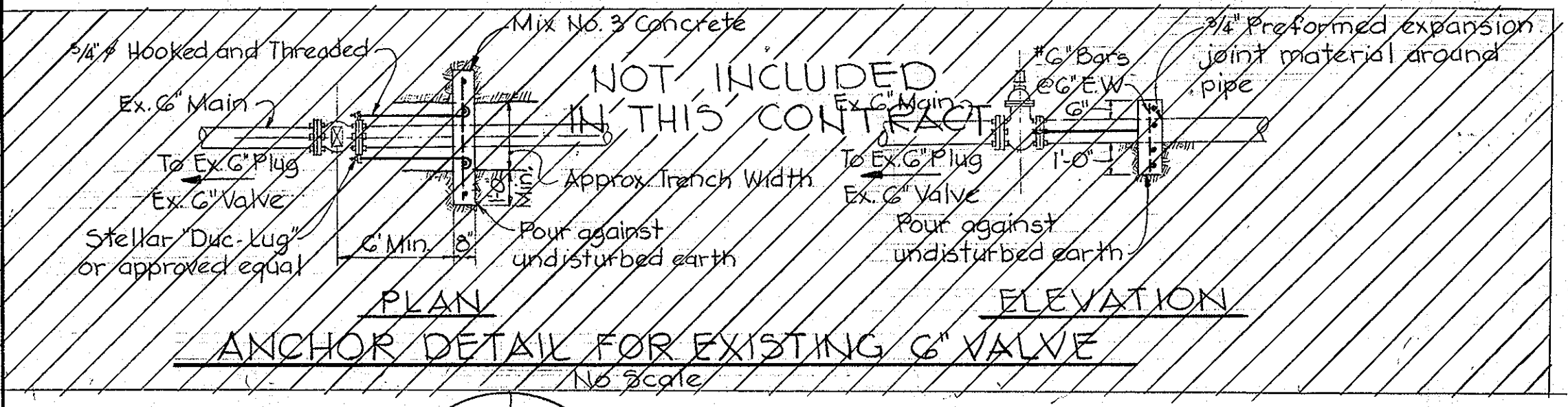
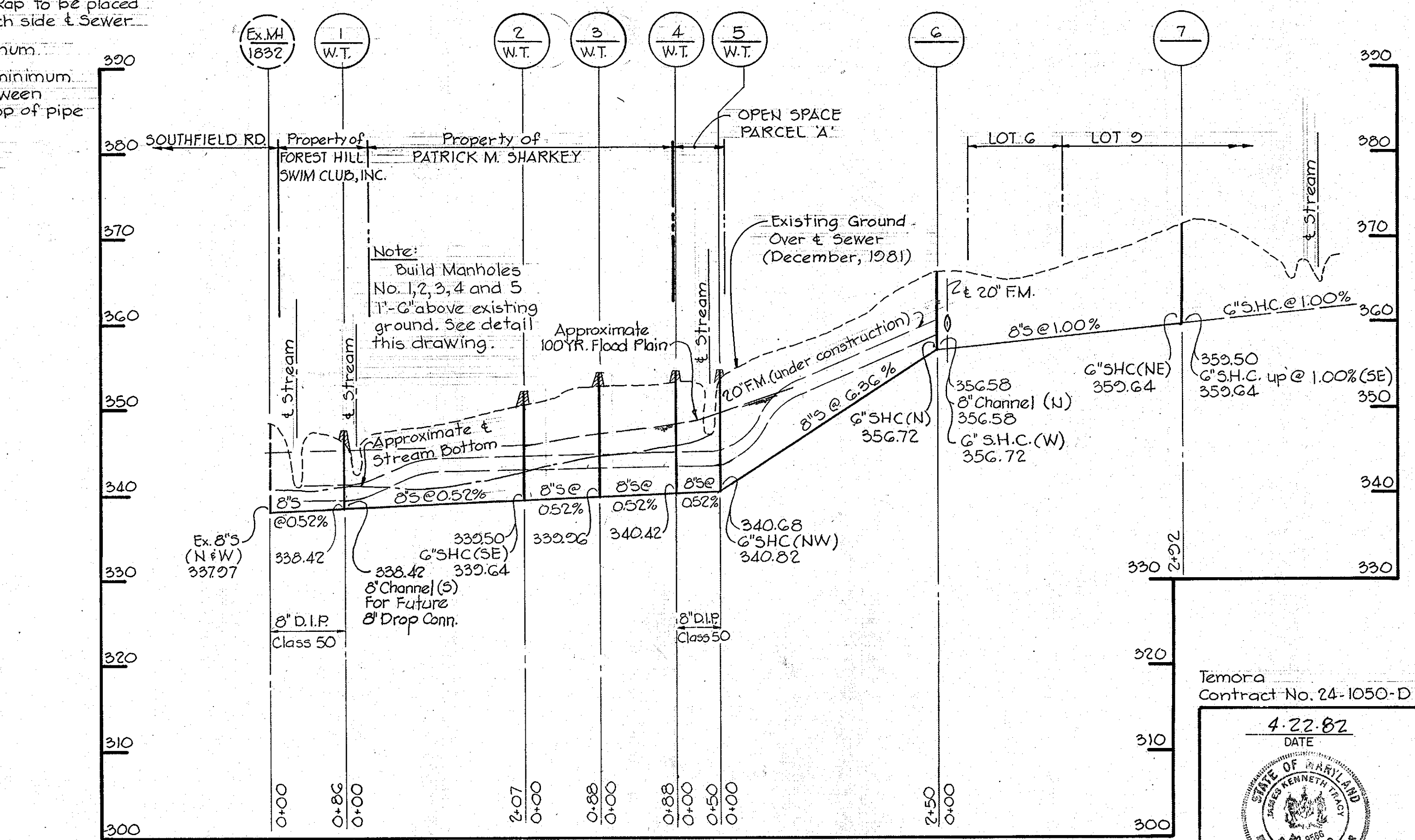
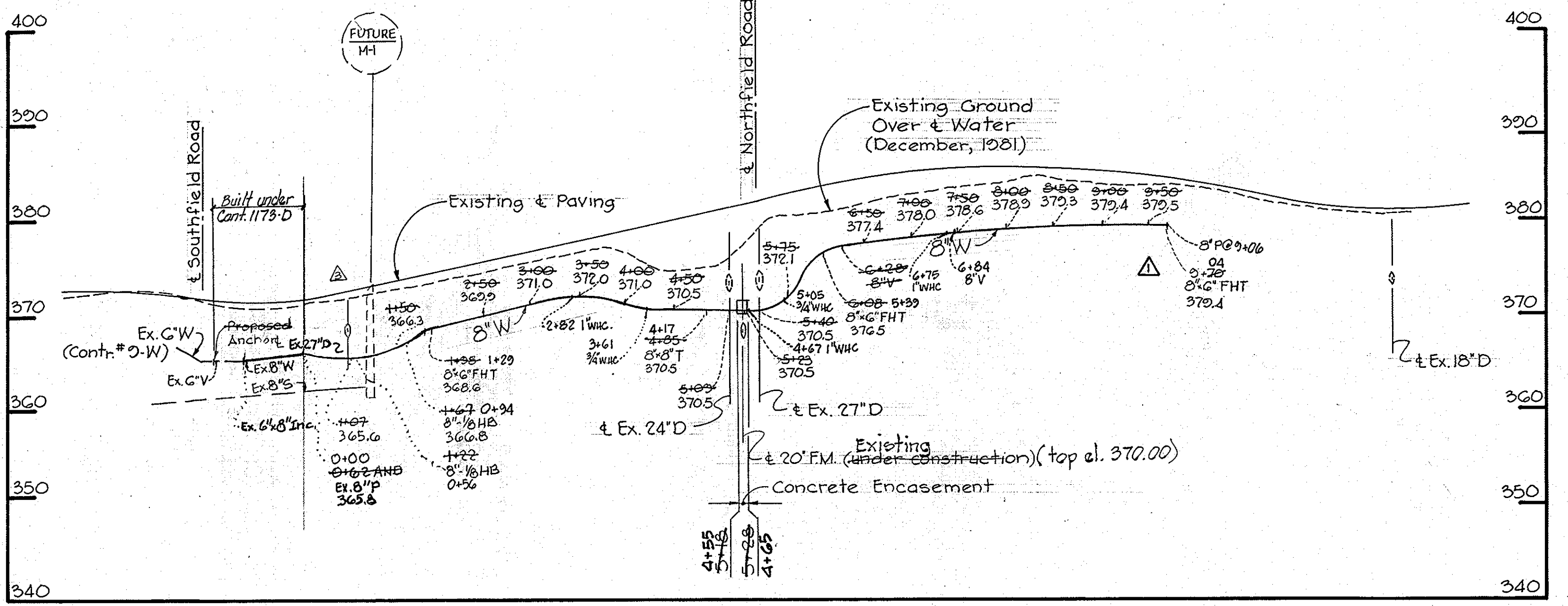
SEDIMENT CONTROL NOTES

- Contractor shall place all excavated material on the uphill side of the trench away from the stream.
- Immediately upon completion of stream crossing between existing manhole 1832 and manhole 1 place straw bale dike or silt fence across the trench, perpendicular to the trench line along the top of the south bank of the stream as shown on plan. Follow the above procedure for the stream crossing between manhole 4 and manhole 5 (place straw bale dike or silt fence along north stream bank as shown on plan). Additional precautions shall be implemented as deemed necessary by the Soil Conservation Inspector to prevent silt from entering the stream.

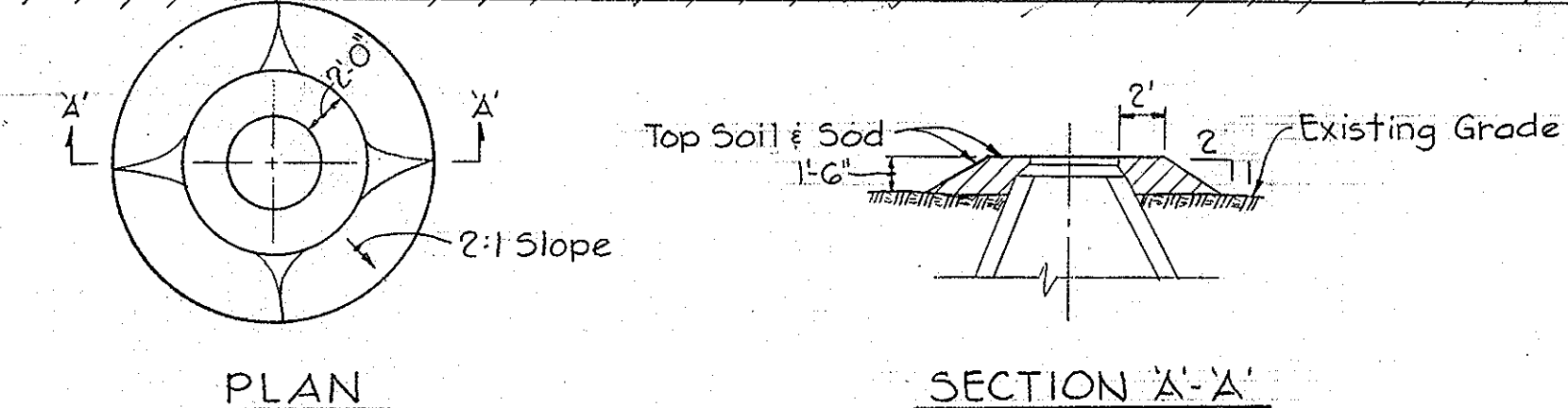
Note: Erosion Control fabric shall be as manufactured by Carthage Mills, Inc. Erosion Control Division, 124 W. 66th Street Cincinnati, Ohio or approved equal.



RIP RAP DETAIL
No Scale



ANCHOR DETAIL FOR EXISTING G VALVE
No Scale



FILL AROUND MANHOLES
No Scale

No.	Date	Revision
1	2-16-84	REVISED WATER TO SATISFY CONTR. #24-1123-D
2	7-13-83	Changed Water alignment Sta. 0+00 to Sta. 0+98
3	10-4-82	Revised invert of F.H.T. @ STA. 0+70

Temora
Contract No. 24-1050-D
4-22-82
DATE
STATE OF MARYLAND
PROFESSIONAL ENGINEER
RENEE K. TRACY
PROFESSIONAL ENGR. NO. 9566

RIEMER-TRACY & ASSOCIATES, INC. 8659 BALTIMORE NATIONAL PIKE ELLCOTT CITY, MARYLAND 21043	DEPARTMENT OF PUBLIC WORKS HOWARD COUNTY, MARYLAND CHIEF, LAND DEVELOPMENT DIVISION DATE 7-16-82 CHIEF, BUREAU OF ENGINEERING DATE 6-25-82 CHIEF, BUREAU OF UTILITIES DATE	CONTRACT NO. 24-1050-D	PROFILES OF WATER AND SEWER MAINS	TEMORA ELECTION DISTRICT ELLICOTT CITY NO. 2	DRAWING NO. 2 OF 2 SCALE H:1"=100' V:1"=10'
---	---	------------------------	-----------------------------------	--	--

1050/2 WS