

WATER CODE - EOG

GENERAL NOTES

- APPROXIMATE LOCATION OF EXISTING MAINS ARE SHOWN. THE CONTRACTOR SHALL TAKE ALL NECESSARY PRECAUTIONS TO PROTECT EXISTING MAINS AND SERVICES AND MAINTAIN UNINTERRUPTED SUPPLY. ANY DAMAGE INCURRED SHALL BE REPAIRED IMMEDIATELY TO THE SATISFACTION OF THE ENGINEER, AT THE CONTRACTOR'S EXPENSE.
- ALL HORIZONTAL CONTROLS ARE BASED ON MARYLAND STATE COORDINATES.
- ALL VERTICAL CONTROLS ARE BASED ON U.S.G.S. DATUM.
- ALL PIPE ELEVATIONS SHOWN ARE INVERT ELEVATIONS.
- CLEAR ALL UTILITIES BY A MINIMUM OF 1'-0". CLEAR ALL POLES BY 2'-0" MINIMUM OR TUNNEL AS REQUIRED. ANY COST INCURRED TO THE CONTRACTOR FOR TUNNELING OR BRACING AT POLES SHALL BE INCLUDED IN UNIT PRICES BID FOR EXCAVATION AND BACKFILL.
- FOR DETAILS NOT SHOWN ON THE DRAWINGS USE HOWARD COUNTY STANDARD DETAILS.
- FOR MATERIALS AND CONSTRUCTION METHODS USE HOWARD COUNTY STANDARD SPECIFICATIONS.
- CONTRACTOR SHALL LOCATE EXISTING UTILITIES A MINIMUM OF TWO (2) WEEKS IN ADVANCE OF CONSTRUCTION OPERATIONS IN THE VICINITY OF PROPOSED UTILITIES AT HIS OWN EXPENSE.
- CONTRACTOR SHALL NOTIFY THE FOLLOWING UTILITIES OR AGENCIES AT LEAST FIVE (5) WORKING DAYS BEFORE STARTING WORK SHOWN ON THESE PLANS:
STATE HIGHWAY ADMINISTRATION — 531-5533

BALTIMORE GAS & ELECTRIC COMPANY—UNDERGROUND ELECTRIC DISTRIBUTION CUSTOMER SERVICE — 685-0123

BALTIMORE GAS & ELECTRIC COMPANY—UNDERGROUND GAS DISTRIBUTION CUSTOMER SERVICE — 685-0123

ENGINEERING—"DAMAGE CONTROL"—234-5621

"MISS UTILITY"—1-559-0100

CHESAPEAKE & POTOMAC (C&P) TELEPHONE COMPANY—725-9976

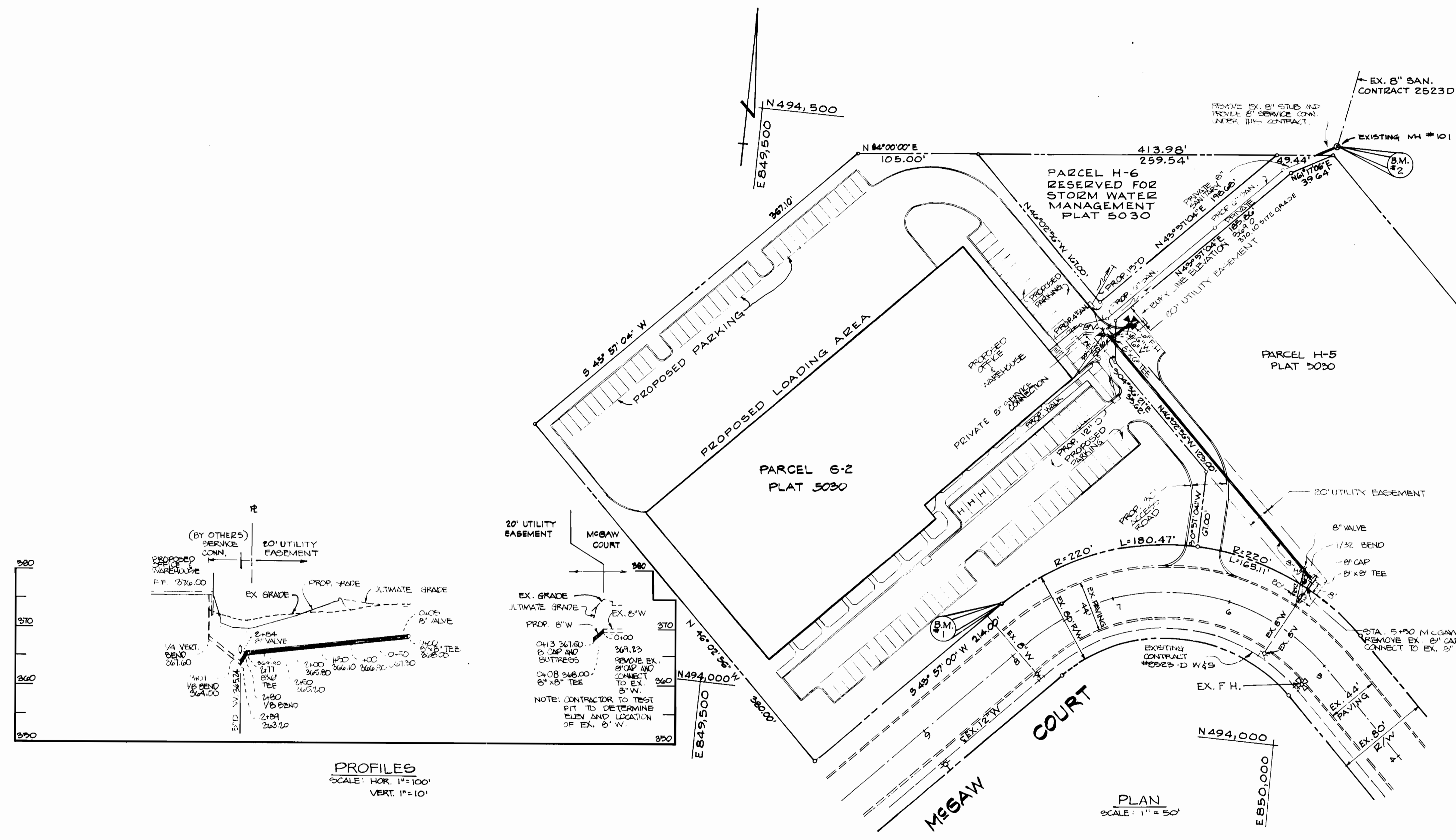
AMERICAN TELEPHONE AND TELEGRAPH—CABLE LOCATION DIVISION—393-3553

COLONIAL PIPELINE COMPANY — 781-4641

BUREAU OF UTILITIES HOWARD COUNTY — 992-2366

- TREES ARE TO BE PROTECTED FROM DAMAGE TO MAXIMUM EXTENT. TREES LOCATED WITHIN THE CONSTRUCTION STRIP ARE NOT TO BE REMOVED OR DAMAGED BY THE CONTRACTOR.
- CONTRACTOR SHALL REMOVE TREES, STUMPS AND ROOTS ALONG LINE OF EXCAVATION AS DIRECTED BY THE ENGINEER. PAYMENT FOR SUCH REMOVAL SHALL BE INCLUDED IN THE UNIT PRICE BID FOR EXCAVATION AND BACKFILL.
- PLACE REGULATION "MEN WORKING" AND WARNING SIGNS AS REQUIRED TO COMPLY WITH MARYLAND STATE HIGHWAY ADMINISTRATION MANUAL OF TRAFFIC CONTROL FOR HIGHWAY CONSTRUCTION AND MAINTENANCE OPERATIONS.
- ALL WATER MAINS TO BE C.I.P. OR D.I.P. UNLESS OTHERWISE NOTED.
- TOP OF ALL WATER MAINS TO HAVE A MINIMUM OF 3-1/2" COVER UNLESS OTHERWISE NOTED.
- VALVES ADJACENT TO TEES SHALL BE STRAPPED TO TEES.
- BLOCK ALL FITTINGS WITH CONCRETE.
- BURY LINE ELEVATIONS ON FIRE HYDRANTS SHALL BE SET TO THE ELEVATIONS SHOWN ON THE DRAWINGS. ALL FIRE HYDRANTS SHALL BE STRAPPED AND BUTTRESSED WITH CONCRETE IN ACCORDANCE WITH STANDARD DETAILS. SOIL AROUND THE FIRE HYDRANT TO BE COMPACTED IN ACCORDANCE WITH SECTION 5-15 OF THE STANDARD SPECIFICATIONS.
- ALL WATER HOUSE CONNECTIONS SHALL BE FOR AN INSIDE METER SETTING.
- CONTRACTOR SHALL NOT OPERATE ANY WATER MAIN VALVES ON THE EXISTING SYSTEM.

QUANTITIES			
ITEM	BID	"AS-BUILT"	MATERIAL/SUPPLIER
8" WATER	300'	285'	DIPATLANTIC STATES
6" WATER	20'	17'	DIPATLANTIC STATES
6" F.H.	1	1	AMERICAN DAPLING/ACP
6" V	1	1	MUELLER CO/ACP
8" V	2	2	MUELLER CO/ACP



PROFILES
SCALE: HOR. 1" = 100'
VERT. 1" = 10'

PLAN
SCALE: 1" = 50'

SEDIMENT CONTROL MEASURES FOR THIS CONTRACT WILL BE IMPLEMENTED IN ACCORDANCE WITH ARTICLE 15 OF THE SPECIFICATION AND ALSO AS PER SDP-92-00.

REVIEWED FOR HOWARD COUNTY SOIL CONSERVATION DISTRICT AND MEETS TECHNICAL REQUIREMENTS.

James M. H. Elm 4-15-82
U.S. SOIL CONSERVATION SERVICE DATE

THIS DEVELOPMENT PLAN IS APPROVED FOR EROSION AND SEDIMENT CONTROL BY THE HOWARD SOIL CONSERVATION DISTRICT.

APPROVED: *William T. Rowe* 4-15-82
HOWARD SOIL CONSERVATION DISTRICT DATE

B.M.#1
TOP OF 3/4" PIPE AT P.T. OF R/W ELEV. 384.45

B.M.#2
TOP OF EXISTING SANITARY MANHOLE ELEV. 339.30

5-12-82 Revised Parcel Nos on Plan and in Title Block
No. DATE REVISION

CONTRACT # 44-1045-D
WATER MAIN EXTENSION FOR FIRE HYDRANT
SIELING INDUSTRIAL CENTER
SEC. 1, AREA 2, PARCELS G-1, H-4

DAFT McCUNE-WALKER, INC.
LAND PLANNING CONSULTANTS
LANDSCAPE ARCHITECTS
ENGINEERS
320 S. JOHN ROAD, TOWSON, MD 21286
TELEPHONE (301) 286-3333
1801 TOWN HARBOR ROAD, SUITE 110, COLUMBIA, MD 21046
TELEPHONE (301) 982-0000 FAX (301) 981-1000

DEPARTMENT OF PUBLIC WORKS - HOWARD COUNTY MARYLAND

John F. Munn 4-24-82
DIRECTOR OF PUBLIC WORKS DATE

William T. Rowe 4-21-82
CHIEF - BUREAU OF ENGINEERING DATE

William T. Rowe 4-21-82
CHIEF - BUREAU OF UTILITIES DATE

William T. Rowe 4-21-82
CHIEF - LAND DEVELOPMENT DIV. DATE

CONTRACT NO. 44-1045-D

PLAN AND PROFILE OF WATER MAIN

COLUMBIA
SIELING INDUSTRIAL CENTER, SECTION 1, AREA 2, PARCELS G-2 H-6
ELECTION DISTRICT
GUILFORD NO. 6

DRAWING NO. 1 OF 1
SCALE: AS SHOWN