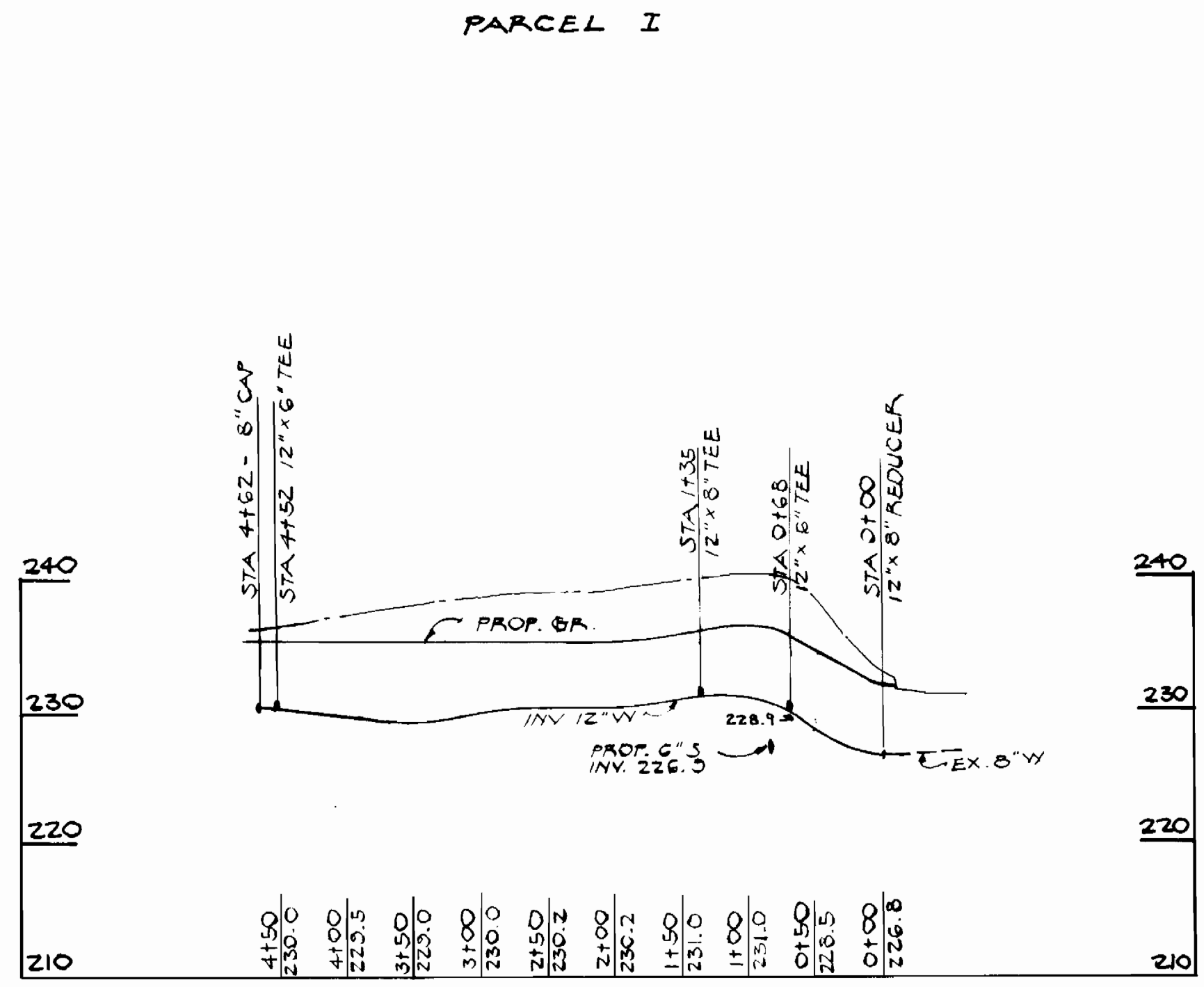


WATER CODE FOR COUNTY USE
 WATER NO. B.C. 2
 TYPE OF BUILDINGS - WAREHOUSE & OFFICE
 NO. OF LOTS - 1
 NO. OF WATER HOUSE CONNECTIONS - 2

GENERAL NOTES

- APPROXIMATE LOCATION OF EXISTING MAINS ARE SHOWN. THE CONTRACTOR SHALL TAKE ALL NECESSARY PRECAUTIONS TO PROTECT EXISTING MAINS AND SERVICES AND MAINTAIN UNINTERRUPTED SUPPLY. ANY DAMAGE INCURRED SHALL BE REPAIRED IMMEDIATELY TO THE SATISFACTION OF THE ENGINEER AT THE CONTRACTOR EXPENSE.
- ALL HORIZONTAL CONTROLS ARE BASED ON MARYLAND STATE COORDINATES.
- ALL VERTICAL CONTROLS ARE BASED ON UGCS DATUM.
- ALL PIPE ELEVATIONS SHOWN ARE INVERT ELEVATIONS.
- CLEAR ALL UTILITIES BY A MIN. OF 6' CLEAR ALL POLES BY 2'-0" MIN. OR TUNNEL AS REQUIRED. ANY COST INCURRED TO THE CONTRACTOR FOR TUNNELING OR BRACING AT POLES SHALL BE INCLUDED IN UNIT PRICES BID FOR EXCAVATION AND BACKFILL.
- FOR DETAILS NOT SHOWN ON THE DRAWINGS USE HOWARD COUNTY STANDARD DETAILS.
- FOR MATERIALS AND CONSTRUCTION METHODS USE HOWARD COUNTY SPECIFICATIONS.
- CONTRACTOR SHALL LOCATE EXIST UTILITIES A MIN. OF (2) WEEKS IN ADVANCE OF CONSTRUCTION OPERATIONS IN THE VICINITY OF PROPOSED UTILITIES AT HIS OWN EXPENSE.
- CONTRACTOR SHALL NOTIFY THE FOLLOWING UTILITIES OR AGENCIES AT LEAST FIVE (5) WORKING DAYS BEFORE STARTING WORK ON THESE PLANS:
 STATE HIGHWAY ADMINISTRATION - 531-5533
 BALTIMORE GAS & ELECTRIC COMPANY UNDERGROUND ELECTRIC DISTRIBUTION CUSTOMER SERVICE 685-0123
 BALTIMORE GAS & ELECTRIC COMPANY UNDERGROUND GAS DISTRIBUTION CUSTOMER SERVICE 685-0123
 ENGINEERING - "DAMAGE CONTROL" - 234-5621
 "MISS UTILITY" - 1-552-0100
 CHESAPEAKE & POTOMAC (C&P) TELEPHONE CO. 125-9976
 AMERICAN TELEPHONE AND TELEGRAPH - CABLE LOCATION DIVISION - 303-3553
 COLONIAL PIPELINE COMPANY 781-4641
 BUREAU OF UTILITIES HOWARD COUNTY 922-2366
- TREES ARE TO BE PROTECTED FROM DAMAGE TO MAXIMUM EXTENT TREES LOCATED WITHIN THE CONSTRUCTION STRIP ARE NOT TO BE REMOVED OR DAMAGED BY THE CONTRACTOR.
- CONTRACTOR SHALL REMOVE TREES, STUMPS AND ROOTS ALONG LINE OF EXCAVATION AS DIRECTED BY THE ENGINEER. PAYMENT FOR SUCH REMOVAL SHALL BE INCLUDED IN THE UNIT PRICE BID FOR EXCAVATION AND BACKFILL.
- PLACE REGULATION "MEN WORKING" AND WARNING SIGNS AS REQUIRED TO COMPLY WITH MARYLAND STATE HIGHWAY ADMINISTRATION MANUAL OF TRAFFIC CONTROL FOR HIGHWAY CONSTRUCTION AND MAINTENANCE OPERATIONS.
- ALL WATER MAINS TO BE C.I.P. OR D.I.P. UNLESS OTHERWISE NOTED.
- TOP OF ALL WATER MAINS TO HAVE A MIN. OF 3'-1/2' COVER UNLESS OTHERWISE NOTED.
- VALVES ADJACENT TO TEES SHALL BE STRAPPED TO TEES.
- BLOCK ALL FITTINGS WITH CONCRETE.
- BURY LINE ELEVATIONS ON FIRE HYDRANTS SHALL BE SET TO THE ELEVATIONS SHOWN ON THE DRAWINGS. ALL FIRE HYDRANTS SHALL BE STRAPPED AND BUTTRESSED WITH CONCRETE IN ACCORDANCE WITH STANDARD DETAILS. SOIL AROUND THE FIRE HYDRANT TO BE COMPACTED IN ACCORDANCE WITH SECT. 5-15 OF THE STANDARD SPECIFICATIONS.
- ALL WATER HOUSE CONNECTIONS SHALL BE FOR AN INSIDE METER SETTING.
- THE CONTRACTOR SHALL NOT OPERATE ANY WATER MAIN VALVES ON THE EXISTING SYSTEM.



NOTE:
 SEDIMENT CONTROL MEASURES FOR THIS CONTRACT WILL BE IMPLEMENTED IN ACCORDANCE WITH ARTICLE 15 OF THE STANDARD SPECIFICATIONS AND SDP 82-60

QUANTITIES			
ITEM	ESTIMATED	AS-BUILT	SUPPLIER
12" W	450'	448	GRIFFIN
8" W	7'	9	GRIFFIN
6" W	50'	42	GRIFFIN
6" V	2	2	DRESSER
8" V	2	2	DRESSER
FIRE HYDRANT	2	2	DRESSER

DEPARTMENT OF PUBLIC WORKS
 HOWARD COUNTY, MARYLAND
 James McLean 2/9/82
 DIRECTOR OF PUBLIC WORKS - DATE
 Robert M. Benjamin 2/8/82
 CHIEF BUREAU OF UTILITIES - DATE

REVIEWED FOR HOWARD SOIL CONSERVATION DISTRICT AND MEETS TECHNICAL REQUIREMENTS
 James McLean 2/4/82
 SIGNATURE
 U.S. SOIL CONSERVATION SERVICE
 THIS DEVELOPMENT PLAN IS APPROVED FOR SOIL EROSION AND SEDIMENT CONTROL BY THE HOWARD COUNTY CONSERVATION DISTRICT.
 William V. Kane 2-4-82
 HOWARD SOIL CONSERVATION SERVICE - DATE

CONTRACT NO. 44-1040-D

PLAN AND PROFILE OF WATER MAIN

PARCEL 'H' BLOCK-C WASHINGTON INDUSTRIAL PARK ELECT. DIST. 6

BALTIMORE WASHINGTON INDUSTRIAL PARK CONT. NO. 44-1040-D
 DRAWING NO. 1 OF 1
 SCALE PLAN 1"=50' PROFILE 1"=100' HORIZ. 1"=100'