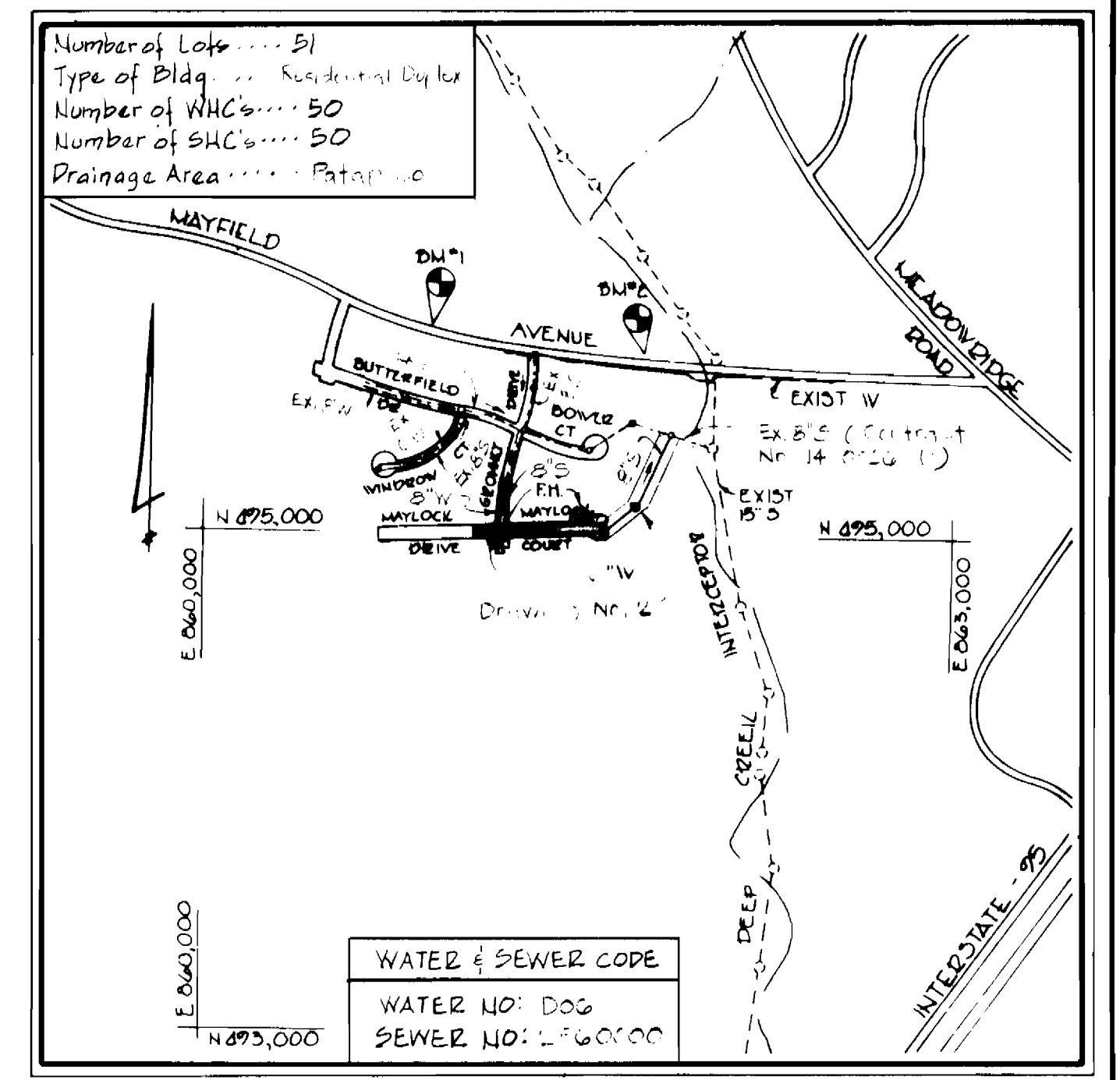
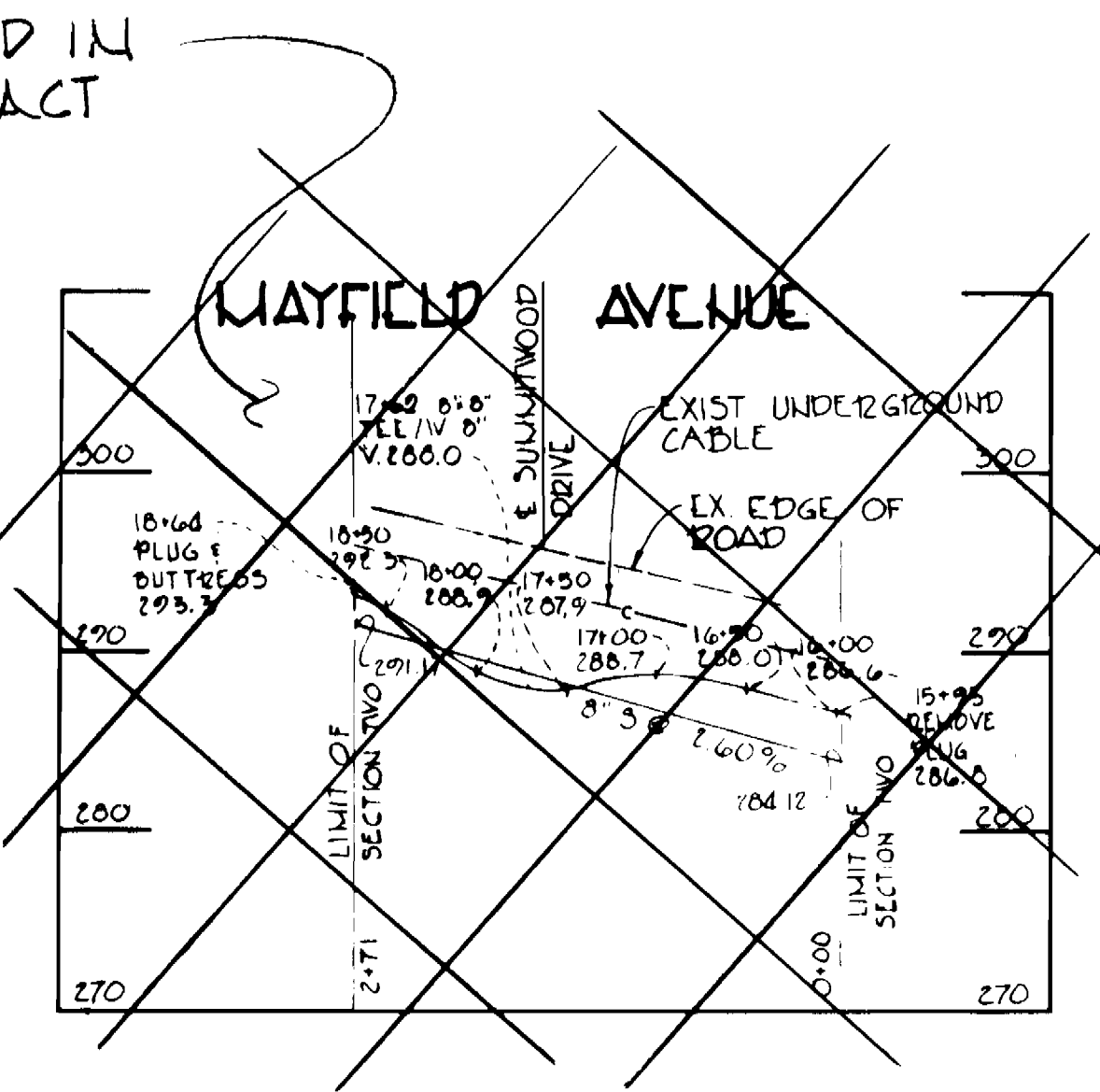
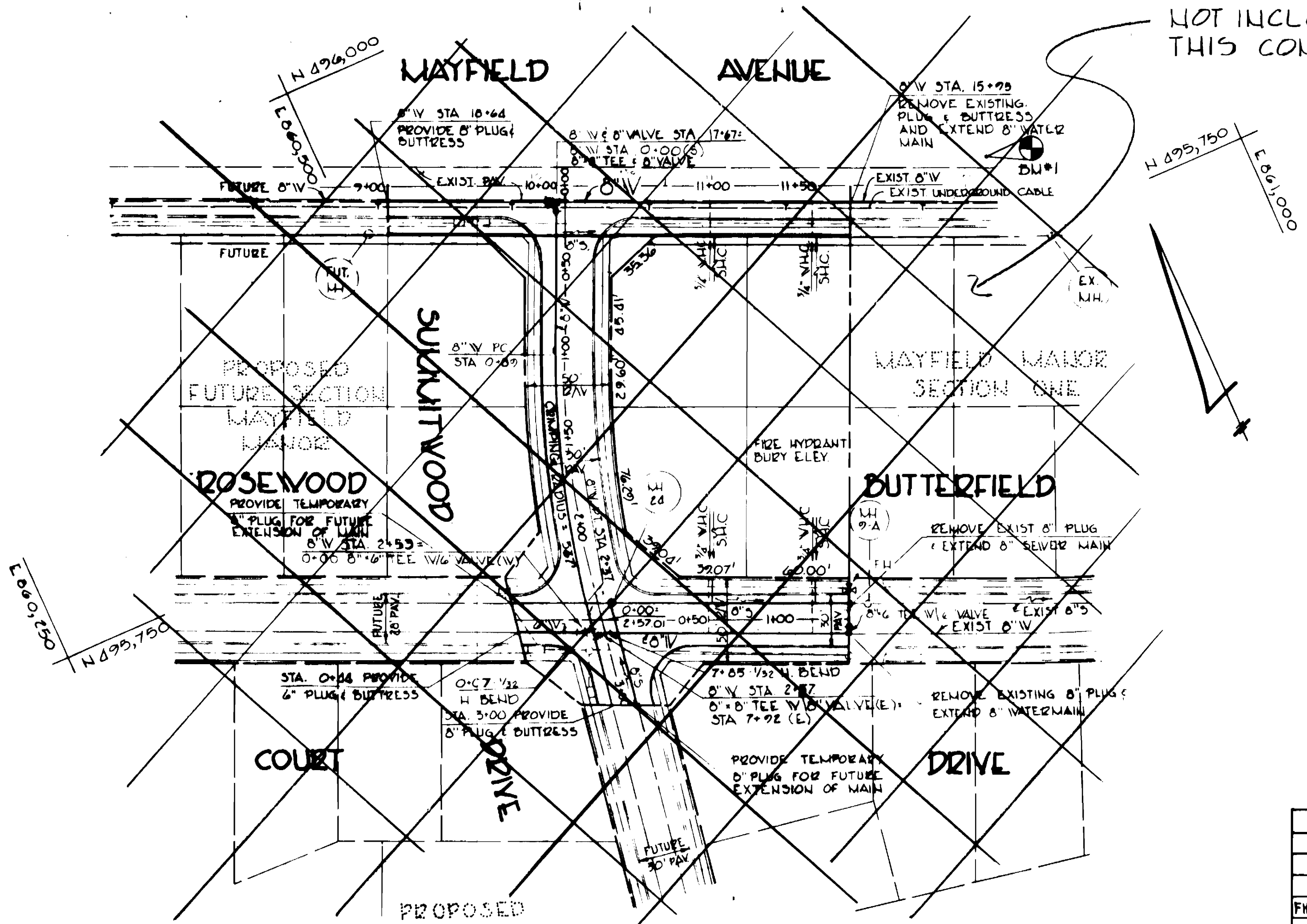


NOT INCLUDED IN THIS CONTRACT



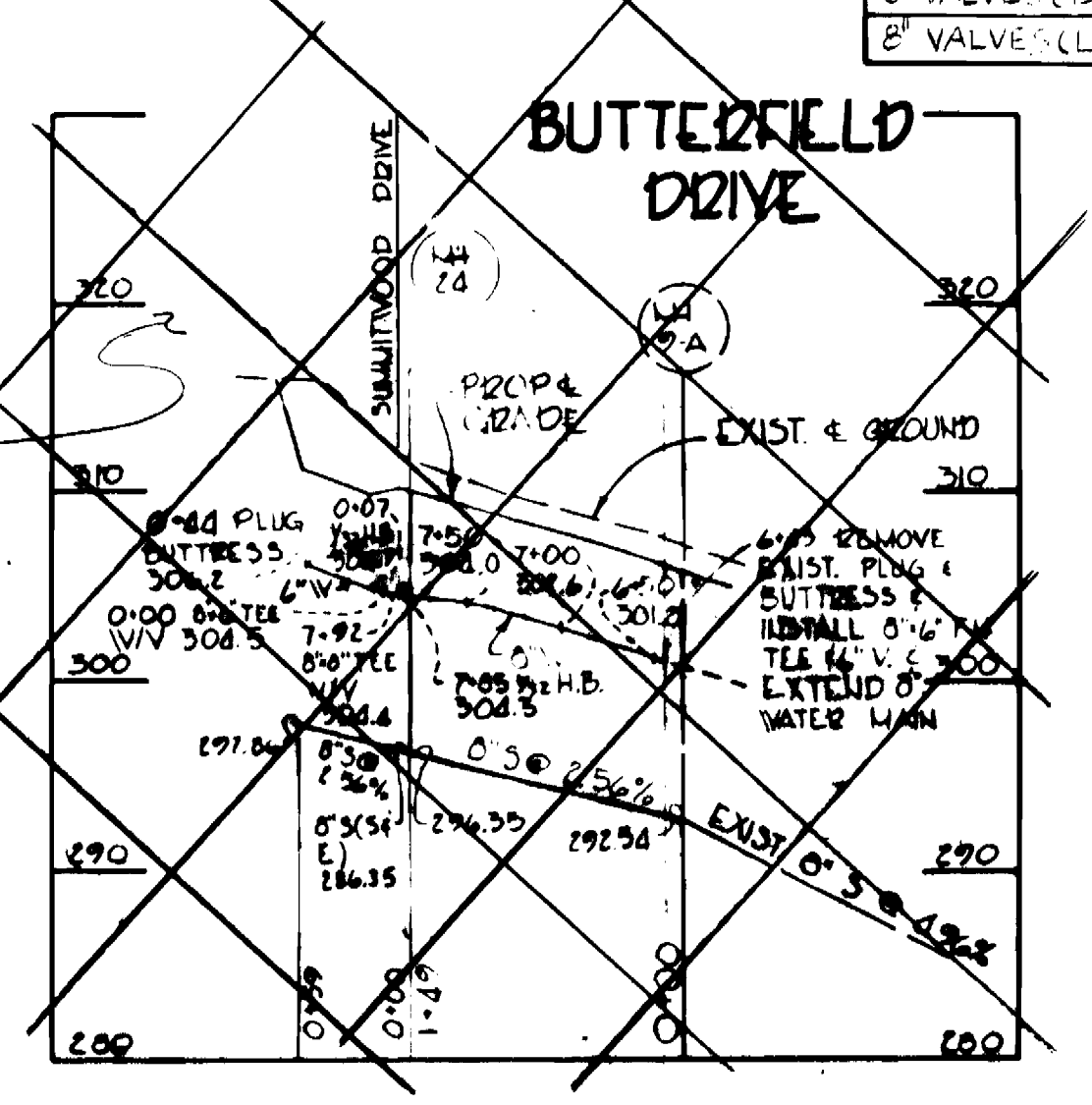
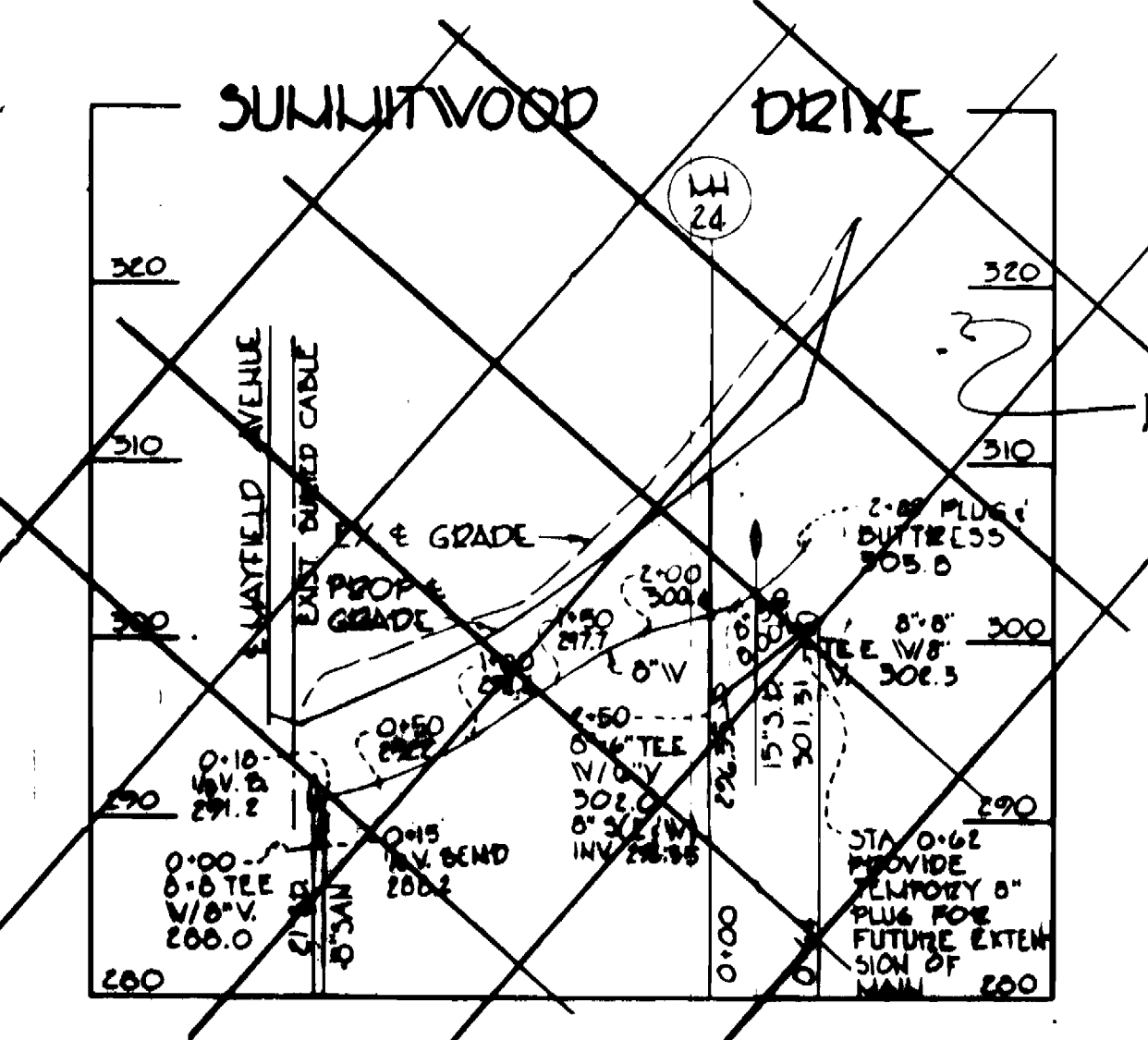
VICINITY MAP
SCALE: 1"=600'

GENERAL NOTES

1. THE APPROXIMATE LOCATIONS OF EXISTING UTILITIES ARE SHOWN. THE CONTRACTOR SHALL TAKE ALL NECESSARY PRECAUTIONS TO PROTECT EXISTING UTILITIES AND TO MAINTAIN UNINTERRUPTED SERVICE. ANY DAMAGE INCURRED DUE TO THE CONTRACTOR'S OPERATION SHALL BE REPAIRED IMMEDIATELY AT THE CONTRACTOR'S EXPENSE.
2. ALL HORIZONTAL CONTROLS ARE BASED ON MARYLAND STATE COORDINATES.
3. ALL VERTICAL CONTROLS ARE BASED ON U.S.G.S DATUM.
4. ALL PIPE ELEVATIONS SHOWN ARE INVERT ELEVATIONS.
5. ALL UTILITIES SHALL BE CLEARED BY A MINIMUM OF 6" ALL UTILITY POLES SHALL BE CLEARED BY A MINIMUM OF 20" OR TUNNELED IF REQUIRED. COST FOR TUNNELING OR BRACING POLES SHALL BE INCLUDED IN THE UNIT PRICES BID FOR EXCAVATION AND BACKFILL FOR WATER MAINS.
6. FOR ALL STANDARD DETAILS SEE STANDARDS BOUND IN THE SPECIFICATIONS.
7. THE CONTRACTOR SHALL LOCATE EXISTING UTILITIES IN ADVANCE OF CONSTRUCTION OPERATIONS IN THE VICINITY OF PROPOSED UTILITIES.
8. THE CONTRACTOR SHALL NOTIFY THE FOLLOWING UTILITIES OR AGENCIES AT LEAST FIVE (5) DAYS BEFORE STARTING WORK SHOWN ON THESE DRAWINGS:
BALTIMORE GAS AND ELECTRIC UNDERGROUND ELECTRIC DISTRIBUTION ENGINEERING - 234 5891
MISS UTILITY 559-0100
BALTIMORE GAS AND ELECTRIC COMPANY UNDERGROUND GAS DISTRIBUTION ENGINEERING - 234 5833
MESAPEAKE AND POTOMAC TELEPHONE COMPANY 725-9976
9. TREES SHALL BE PROTECTED FROM DAMAGE TO A MAXIMUM EXTENT. TREES LOCATED WITHIN CONSTRUCTION STRIPS SHALL NOT BE REMOVED OR DAMAGED BY THE CONTRACTOR.
10. THE CONTRACTOR SHALL REMOVE TREES, STUMPS AND ROOTS ALONG THE LINE OF EXCAVATION AS DIRECTED BY THE ENGINEER. COST FOR SUCH REMOVAL SHALL BE INCLUDED IN THE UNIT PRICES BID FOR EXCAVATION AND BACKFILL FOR WATER MAINS AND SEWER MAINS.
11. THE CONTRACTOR SHALL PLACE REGULATION "MEN WORKING" AND WARNING SIGNS AS REQUIRED TO COMPLY WITH MARYLAND STATE HIGHWAY ADMINISTRATION MANUAL OF TRAFFIC FOR HIGHWAY CONSTRUCTION AND MAINTENANCE OPERATIONS.
12. ALL WATER MAINS SHALL BE CIP, 24" DIP UNLESS OTHERWISE NOTED.
13. THE TOP OF ALL WATER MAINS SHALL HAVE A MINIMUM OF 4'-0" COVER UNLESS OTHERWISE NOTED.
14. ALL VALVES SHALL BE STRAPPED TO THE TREES IN ACCORDANCE WITH THE STANDARD DETAILS.
15. ALL WATER MAIN FILLINGS SHALL BE BUTTRESSED OR ANCHORED WITH CONCRETE IN ACCORDANCE WITH STANDARD DETAILS.
16. ALL FIRE HYDRANTS SHALL BE STRAPPED TO THE TREES AND SHALL BE BUTTRESSED WITH CONCRETE IN ACCORDANCE WITH THE STANDARD DETAILS. THE COST OF STRAPPING FIRE HYDRANTS AND VALVES SHALL BE INCLUDED IN THE UNIT PRICE BID FOR FURNISHING AND INSTALLING FIRE HYDRANTS. ALL FIRE HYDRANTS SHALL BE COMPACTED IN ACCORDANCE WITH ARTICLE 21.01 OF THE STANDARD SPECIFICATIONS. FIRE HYDRANT BURY LINE ELEVATIONS SHALL BE SET TO THE ELEVATION SHOWN ON THE DRAWINGS.
17. ALL WATER HOUSE CONNECTIONS SHALL BE FOR INSIDE METER SETTINGS.
18. ALL SEWER MAINS SHALL BE C.S.P.X., V.C.P.X., P.V.C. OR ACP CLASS 2400 UNLESS OTHERWISE NOTED.
19. THE CONTRACTOR SHALL PROVIDE A JOINT IN ALL SEWER MAINS WITHIN 2'-0" OF THE EXTERIOR MANHOLES WALLS.
20. ALL MANHOLES SHALL BE 4'-0" INSIDE DIAMETER UNLESS OTHERWISE NOTED.
21. ALL DUAL WATER HOUSE CONNECTION (DWHC) SHALL BE 3/8" METER IN ACCORDANCE WITH STANDARD DETAILS W-223.

QUANTITIES		
ITEM	ESTIMATED	AS-BUILT
6" W (L.F.)	1	339.3
6" W (L.F.)	1	594.0
FIRE HYDRANTS	2	2
1" DWHC (L.F.)	266	361
3/4" WHC (L.F.)	2	606
8" S (L.F.)	151	1074.0
6" SHC (L.F.)	75	743.0
MANHOLE (EA)	2	6
6" VALVES (EA)	3	3
8" VALVES (EA)	1	1

PLAN
SCALE: 1"=50'



PROFILES
SCALE: HORIZ: 1"=50'
VERT: 1"=5'

SEDIMENT CONTROL MEASURES FOR THIS CONTRACT WILL BE IMPLEMENTED IN ACCORDANCE WITH ARTICLE # 15 OF THE HOWARD COUNTY STANDARD SPECIFICATIONS AND AS PER ROAD CONSTRUCTION PLAN # F-80-167

HOWARD SOIL CONSERVATION DISTRICT:
REVIEWED FOR HOWARD SOIL CONSERVATION DISTRICT AND MEETS TECHNICAL REQUIREMENTS.

U.S. SOIL CONSERVATION SERVICE 2-22-82 DATE

THIS PLAN IS APPROVED FOR SOIL EROSION AND SEDIMENT CONTROL BY THE HOWARD SOIL CONSERVATION DISTRICT

William J. [Signature] 2-22-82 DATE
HOWARD SOIL CONSERVATION DISTRICT

DEPARTMENT OF PUBLIC WORKS
HOWARD COUNTY MARYLAND

DATE: 2/22/82
DATE: 2/22/82

DATE: 2/22/82
DATE: 2/22/82

PURDUM & JESCHKE
ENGINEERS
1023 N. CALVERT ST
BALTIMORE, MARYLAND

CONTRACT NO. 14-1038-D

PLAN & PROFILE
WATER AND SEWER MAINS

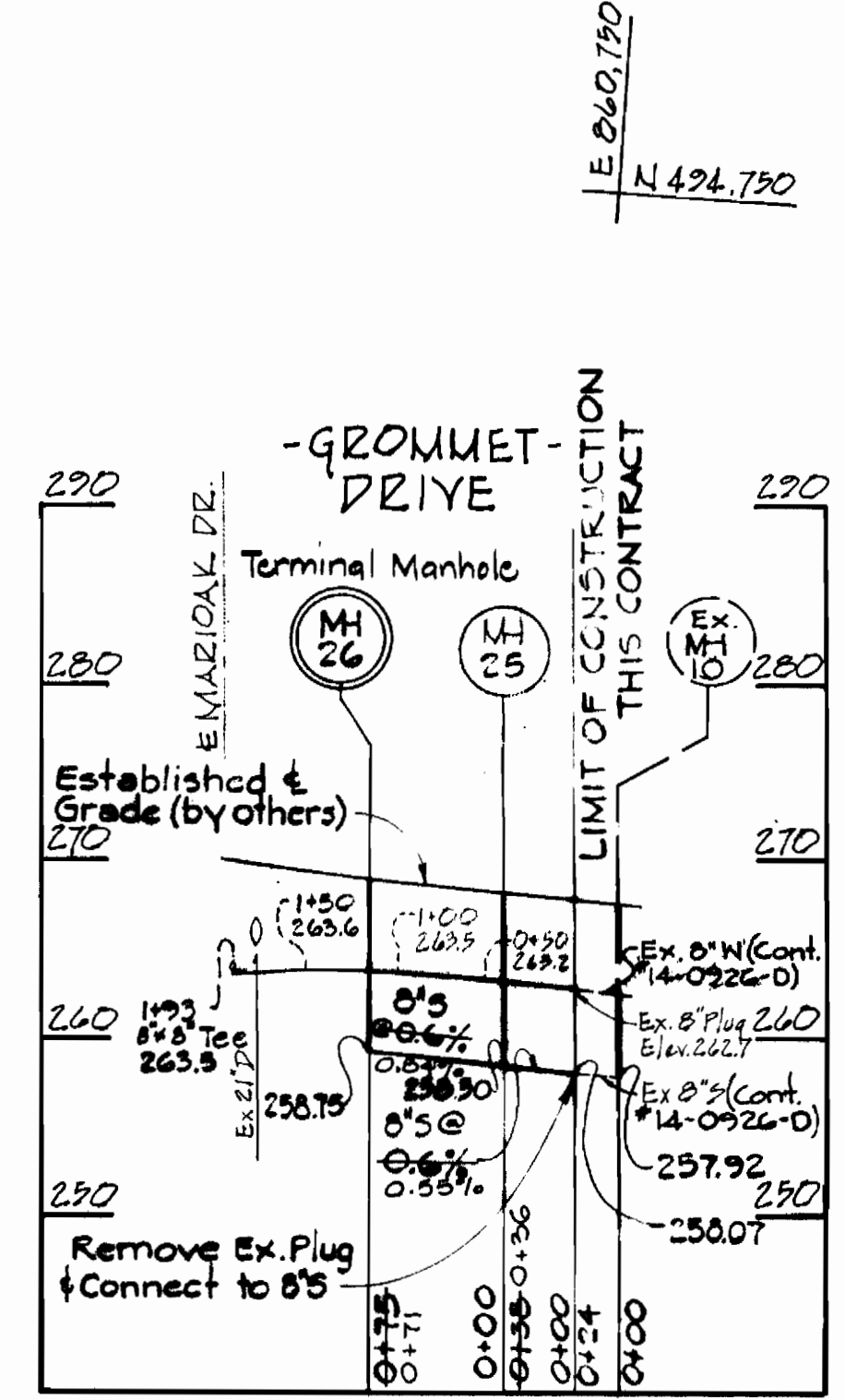
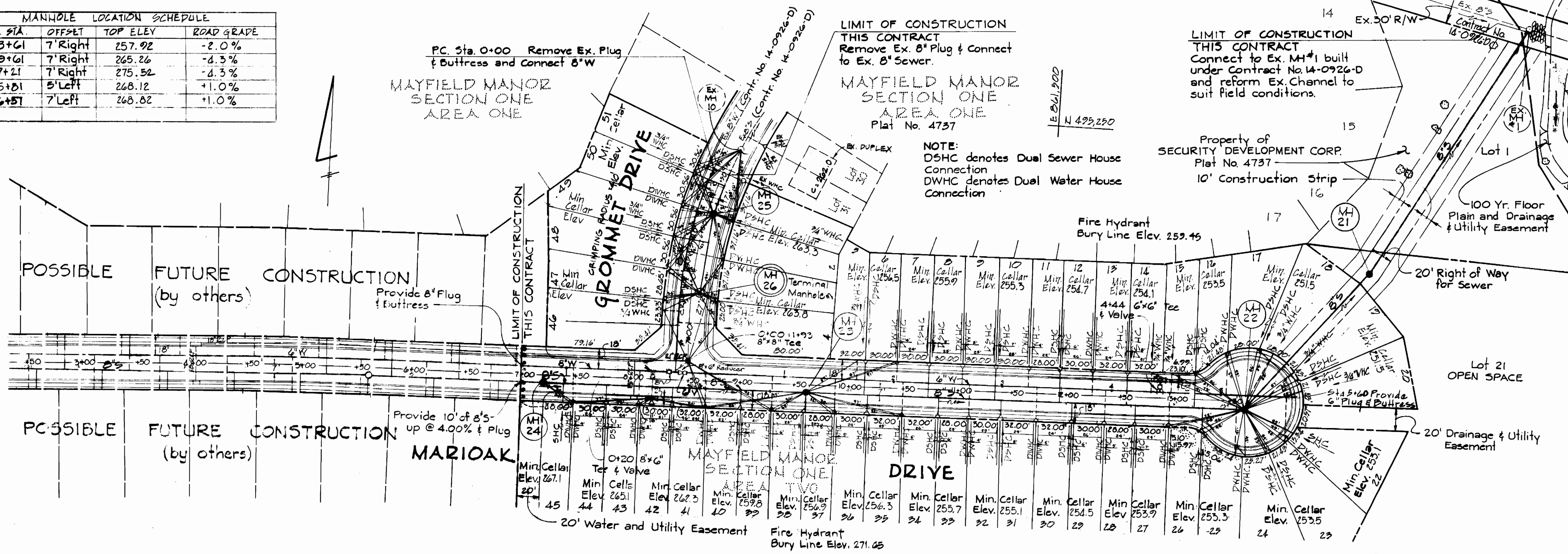
MAYFIELD MANOR
1st ELECTION DISTRICT
HOWARD CO., MARYLAND

DRAWING NO. 1 OF 2
SCALE AS SHOWN
DES: REP
CHK: REP
DRW: S: B

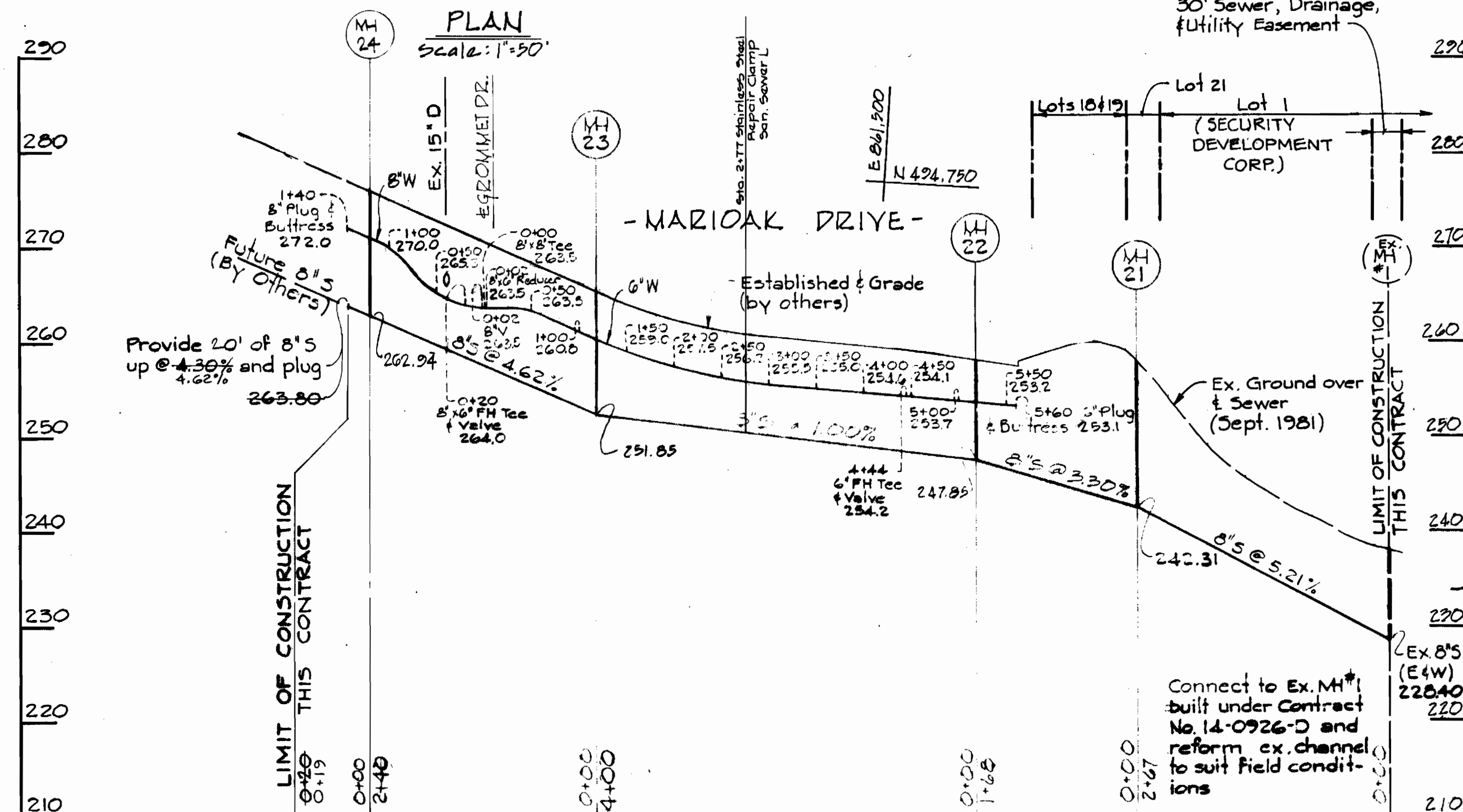
As Built - June 1982

FEB. 18, 1982

MANHOLE LOCATION SCHEDULE				
NO	E STA	OFFSET	TOP ELEV	ROAD GRADE
22	13+61	7' Right	257.92	-2.0%
23	9+61	7' Right	265.26	-4.3%
24	7+21	7' Right	275.52	-4.3%
25	5+81	5' Left	268.12	+1.0%
26	6+51	7' Left	268.82	+1.0%



PROFILE
Scale: Horiz. 1" = 100'
Vert. 1" = 10'



PROFILE Scale: Horiz. 1" = 100'
Vert. 1" = 10'

BENCH MARKS

- B.M. #1 Elev. 290.09
R.R. Spike in G & E Pole #147131
Left of & Mayfield Avenue @ Sta. 12+61
- B.M. #2 Elev. 246.25
R.R. Spike in 30' tree left of & Mayfield Avenue @ Sta. 22+65

HOWARD SOIL CONSERVATION DISTRICT:
REVIEWED FOR HOWARD SOIL CONSERVATION DISTRICT AND MEETS TECHNICAL REQUIREMENTS
[Signature] 2-22-82
U.S. SOIL CONSERVATION SERVICE DATE
THIS PLAN IS APPROVED FOR SOIL EROSION AND SEDIMENT CONTROL BY THE HOWARD SOIL CONSERVATION DISTRICT.
[Signature] 2-22-82
HOWARD SOIL CONSERVATION DISTRICT DATE

DEPARTMENT OF PUBLIC WORKS
HOWARD COUNTY MARYLAND
Director of Public Works: *[Signature]* 2-16-82
Chief - Bureau of Utilities: *[Signature]* 2-24-82
Chief - Bureau of Engineer: *[Signature]* 2-16-82
Chief - Land Development: *[Signature]* 2-16-82

PURDUM & JESCHKE
ENGINEERS
1023 N. CALVERT ST.
BALTIMORE, MARYLAND

CONTRACT NO. 14-1038-D

PLAN & PROFILES FOR
WATER AND SEWER MAINS

MAYFIELD MANOR
1st ELECTION DISTRICT
HOWARD CO., MARYLAND

DRAWING NO. 2 OF 2
SCALE AS SHOWN
DES: REP. CHK: REP. DRW: PWR