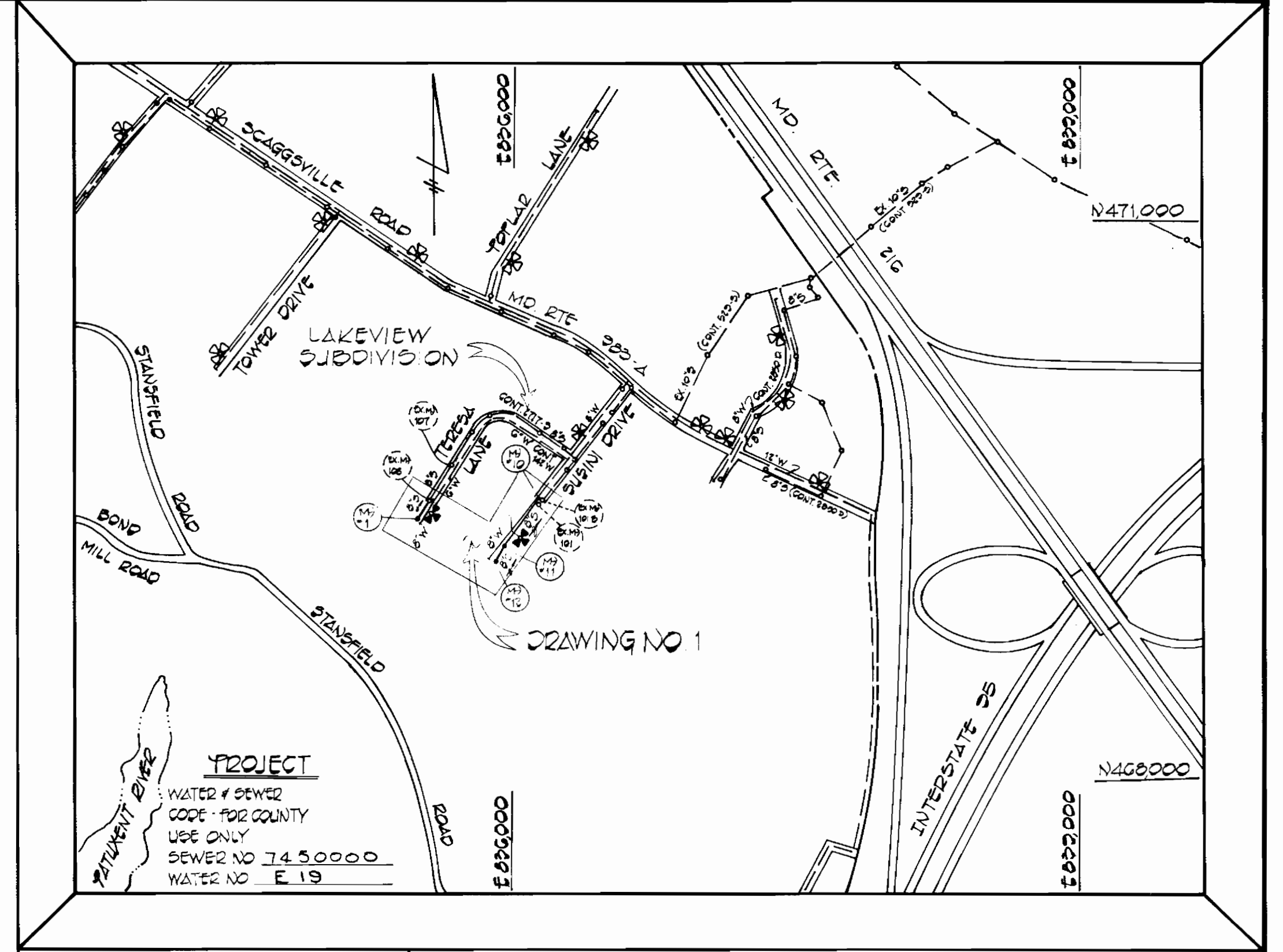
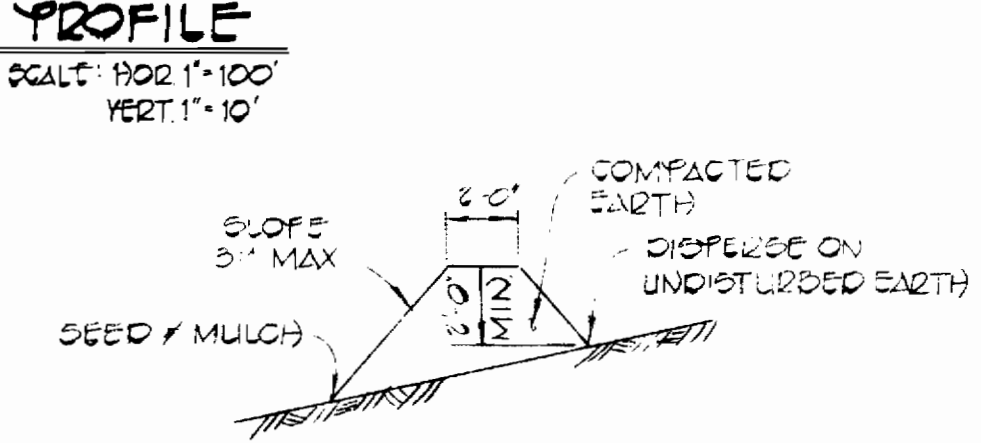
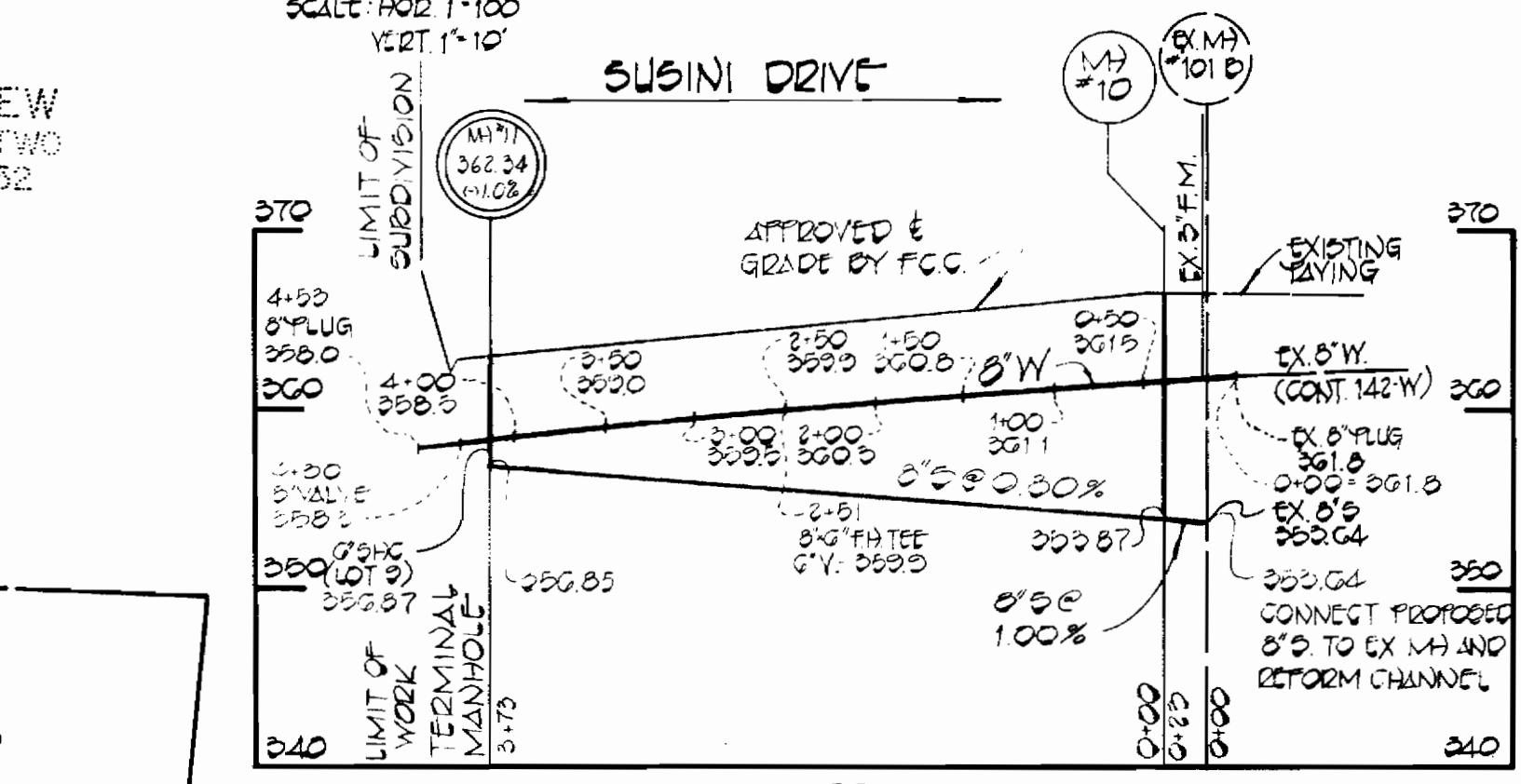
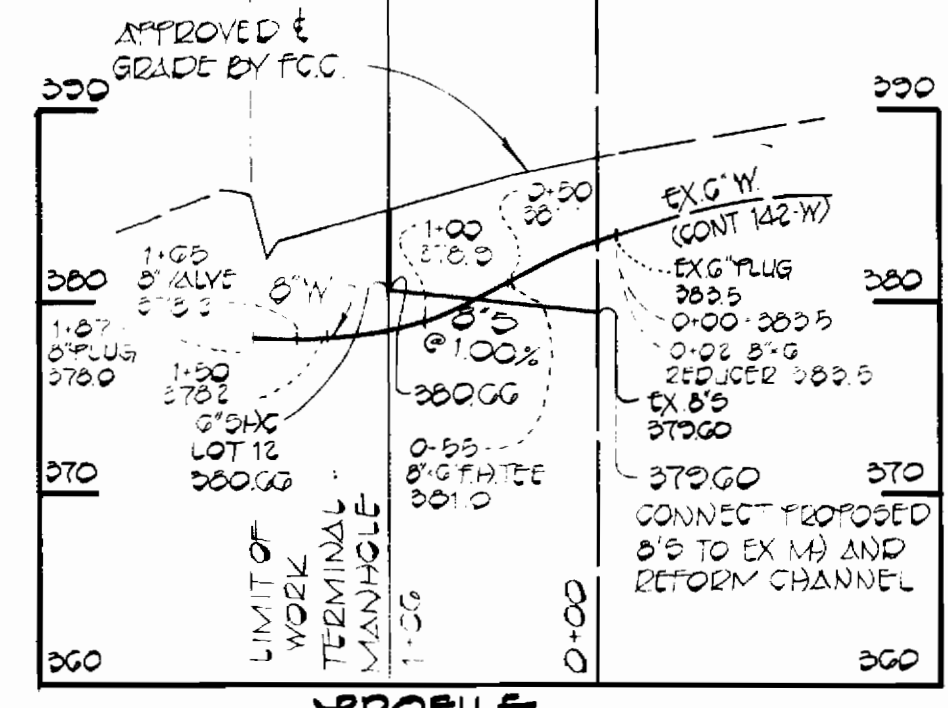


BENCH MARKS

B.M.#1	ELEV 306.00
TK NAIL SET @ END OF SUSINI DR.	
B.M.#2	ELEV 306.10
IRON PIPE SET - TRAVERSE STA. F-5 200' WEST OF EXISTING MH 100, REAR LOT 11	



TYPE OF BUILDINGS: SINGLE FAMILY DWELLING
 NUMBER OF LOTS: 12
 NUMBER OF WATER HOUSE CONN.: 12
 NUMBER OF SEWER HOUSE CONN.: 12
 DRAINAGE AREA: LITTLE PATUXENT

VICINITY MAP
SCALE: 1" = 600'

GENERAL NOTES

- APPROXIMATE LOCATION OF EXISTING MAINS ARE SHOWN. THE CONTRACTOR SHALL TAKE ALL NECESSARY PRECAUTIONS TO PROTECT EXISTING MAINS AND SERVICES AND MAINTAIN UNINTERRUPTED SUPPLY. ANY DAMAGE INCURRED SHALL BE REPAIRED IMMEDIATELY TO THE SATISFACTION OF THE ENGINEER, AT THE CONTRACTORS EXPENSE.
- ALL VERTICAL CONTROLS ARE BASED ON MARYLAND STATE COORDINATES.
- ALL VERTICAL CONTROLS ARE BASED ON U.S.G.S. DATUM.
- ALL PIPE ELEVATIONS SHOWN ARE INVERT ELEVATIONS.
- CLEAR ALL UTILITIES BY A MINIMUM OF 6" CLEAR ALL POLES BY 2'-0" MINIMUM OR TUNNEL AS REQUIRED. ANY COST INCURRED TO THE CONTRACTOR FOR TUNNELING OR BRACING AT POLES SHALL BE INCLUDED IN UNIT PRICES BID FOR EXCAVATION AND BACKFILL.
- FOR DETAILS NOT SHOWN ON THE DRAWINGS USE HOWARD COUNTY STANDARD DETAILS.
- FOR MATERIALS AND CONSTRUCTION METHODS USE HOWARD COUNTY STANDARD SPECIFICATIONS. CONTRACTOR SHALL LOCATE EXISTING UTILITIES A MINIMUM OF TWO (2) WEEKS IN ADVANCE OF CONSTRUCTION OPERATIONS IN THE VICINITY OF PROPOSED UTILITIES AT HIS OWN EXPENSE.
- CONTRACTOR SHALL NOTIFY THE FOLLOWING UTILITIES OR AGENCIES AT LEAST FIVE (5) WORKING DAYS BEFORE STARTING WORK SHOWN ON THESE PLANS:
 BALTIMORE GAS AND ELECTRIC CO. - UNDERGROUND ELECTRIC DISTRIBUTION
 CUSTOMER SERVICE - 685-0123
 BALTIMORE GAS AND ELECTRIC CO. - UNDERGROUND GAS DISTRIBUTION
 CUSTOMER SERVICE - 685-0123
 ENGINEERING - " DAMAGE CONTROL " - 234-5621
 "MISS UTILITY" - 1-559-0100
 CHESAPEAKE & POTOMAC (C&P) TELEPHONE COMPANY - 725-9976
 BUREAU OF UTILITIES HOWARD COUNTY - 992-2366
- TREES ARE TO BE PROTECTED FROM DAMAGE TO MAXIMUM EXTENT TREES LOCATED WITHIN THE CONSTRUCTION STRIP ARE NOT TO BE REMOVED OR DAMAGED BY THE CONTRACTOR.
- CONTRACTOR SHALL REMOVE TREES, STUMPS AND ROOTS ALONG LINE OF EXCAVATION AS DIRECTED BY THE ENGINEER. PAYMENT FOR SUCH REMOVAL SHALL BE INCLUDED IN THE UNIT PRICE BID FOR EXCAVATION AND BACKFILL.
- PLACE REGULATION " MEN WORKING " AND WARNING SIGNS AS REQUIRED TO COMPLY WITH MARYLAND STATE HIGHWAY ADMINISTRATION MANUAL OF TRAFFIC CONTROL FOR HIGHWAY CONSTRUCTION AND MAINTENANCE OPERATIONS.
- ALL WATER MAINS TO BE C.I.P. OR D.I.P. UNLESS OTHERWISE NOTED.
- TOP OF ALL WATER MAINS TO HAVE A MINIMUM OF 3'-1/2" COVER UNLESS OTHERWISE NOTED.
- VALVES ADJACENT TO TEES SHALL BE STRAPPED TO TEES.
- BLOCK ALL FITTINGS WITH CONCRETE.
- BURY LINE ELEVATIONS ON FIRE HYDRANTS SHALL BE SET TO THE ELEVATIONS SHOWN ON THE DRAWINGS. ALL FIRE HYDRANTS SHALL BE STRAPPED AND BUTTRESSED WITH CONCRETE IN ACCORDANCE WITH STANDARD DETAILS. SOIL AROUND THE FIRE HYDRANT TO BE COMPACTED IN ACCORDANCE WITH SECTION 5-15 OF THE STANDARD SPECIFICATIONS.
- ALL WATER HOUSE CONNECTIONS SHALL BE FOR AN INSIDE METER SETTING.
- THE CONTRACTOR SHALL NOT OPERATE ANY WATER MAIN VALVES ON THE EXISTING SYSTEM.
- ALL SEWER MAINS SHALL BE C.S.P.V. OR A.C.P. CLASS 2400 UNLESS OTHERWISE NOTED.
- THE CONTRACTOR SHALL PROVIDE A JOINT IN ALL SEWER MAINS WITHIN 2'-0" OF EXTERIOR MANHOLE WALL.
- ALL MANHOLES SHALL BE 4'-0" INSIDE DIAMETER UNLESS OTHERWISE NOTED.
- MANHOLES SHOWN WITH 12" AND 16" WALLS ARE BRICK MANHOLES ONLY.
- WATER MAIN AND WATER HOUSE CONNECTIONS MUST HAVE AT LEAST ONE FOOT SEPARATION FROM THE SEWER MAIN AND SEWER HOUSE CONNECTION AS THEY PASS ABOVE IT.

REVISIONS

NO.	DATE	DESCRIPTION
1	10-19-82	REVISE MIN SEWER SERVICE TO MIN CELLAR ELEVATION CHANGE SECTION 4, AREA 1 TO SECTION 4, AREA 1

QUANTITIES

ITEM	EST QTY	AS BUILT	SUPPLIER
8" SEWER	502 LF	502 LF	CARLON PVC
8" PVC	255 LF	255 LF	CARLON PVC
MANHOLES	24 V.F.	24 V.F.	TERRA HILL
8" WATER	640 LF	640 LF	U.S. PIPE
8" WATER	44 LF	44 LF	U.S. PIPE
24" W/H	225 LF	225 LF	"
FIRE HYD	2 EA	2	"
8" VALVES	2 EA	2	"
8" (1) VALVE	2 EA	2	"

SEDIMENT CONTROL MEASURED FOR THIS CONTRACT WILL BE IMPLEMENTED IN ACCORDANCE WITH THE PROVISIONS OF THESE SPECIFICATIONS AND ALSO AS SHOWN ON THE GRADING & SEDIMENT CONTROL PLAN F-82-40

REVIEWED FOR HOWARD COUNTY SOIL CONSERVATION DISTRICT AND MEETS TECHNICAL REQUIREMENTS

James K. ... 1-14-82
U.S. SOIL CONSERVATION SERVICE DATE

THIS DEVELOPMENT IS APPROVED FOR EROSION AND SEDIMENT CONTROL BY THE HOWARD SOIL CONSERVATION DISTRICT.

APPROVED: *William V. ...* 1-14-82
HOWARD SOIL CONSERVATION DISTRICT DATE

CONTRACT NO. 24-1036-D
LAKEVIEW SECTION 4, AREA 1
WATER AND SEWER EXTENSION

STATE OF MARYLAND
 TERESA A. ...
 REGISTERED PROFESSIONAL ENGINEER
 No. 9157
 EXPIRES 12/31/82

DEPARTMENT OF PUBLIC WORKS
 HOWARD COUNTY, MARYLAND

George F. ... 1-19-82
DIRECTOR OF PUBLIC WORKS DATE

William V. ... 1-19-82
CHIEF, BUREAU OF ENGINEERING DATE

William V. ... 1-19-82
CHIEF, LAND DEVELOPMENT DIVISION DATE

FISHER, COLLINS AND CARTER, INC.
 CIVIL ENGINEERS AND LAND SURVEYORS
 8388 COURT AVENUE
 ELLICOTT CITY, MARYLAND 21043

CONTRACT NO. 24-1036-D

PLAN, PROFILE & DETAILS
 WATER & SEWER MAINS

LAKEVIEW SECTION 4, AREA 1
 ELECTION DISTRICT 6
 HOWARD COUNTY, MARYLAND

DRAWING NO.	1	SCALE	AS SHOWN	DES: D.B.S.
OF.	1			DRN: D.B.S.
				CHK: T.A.F.
				LERVED: