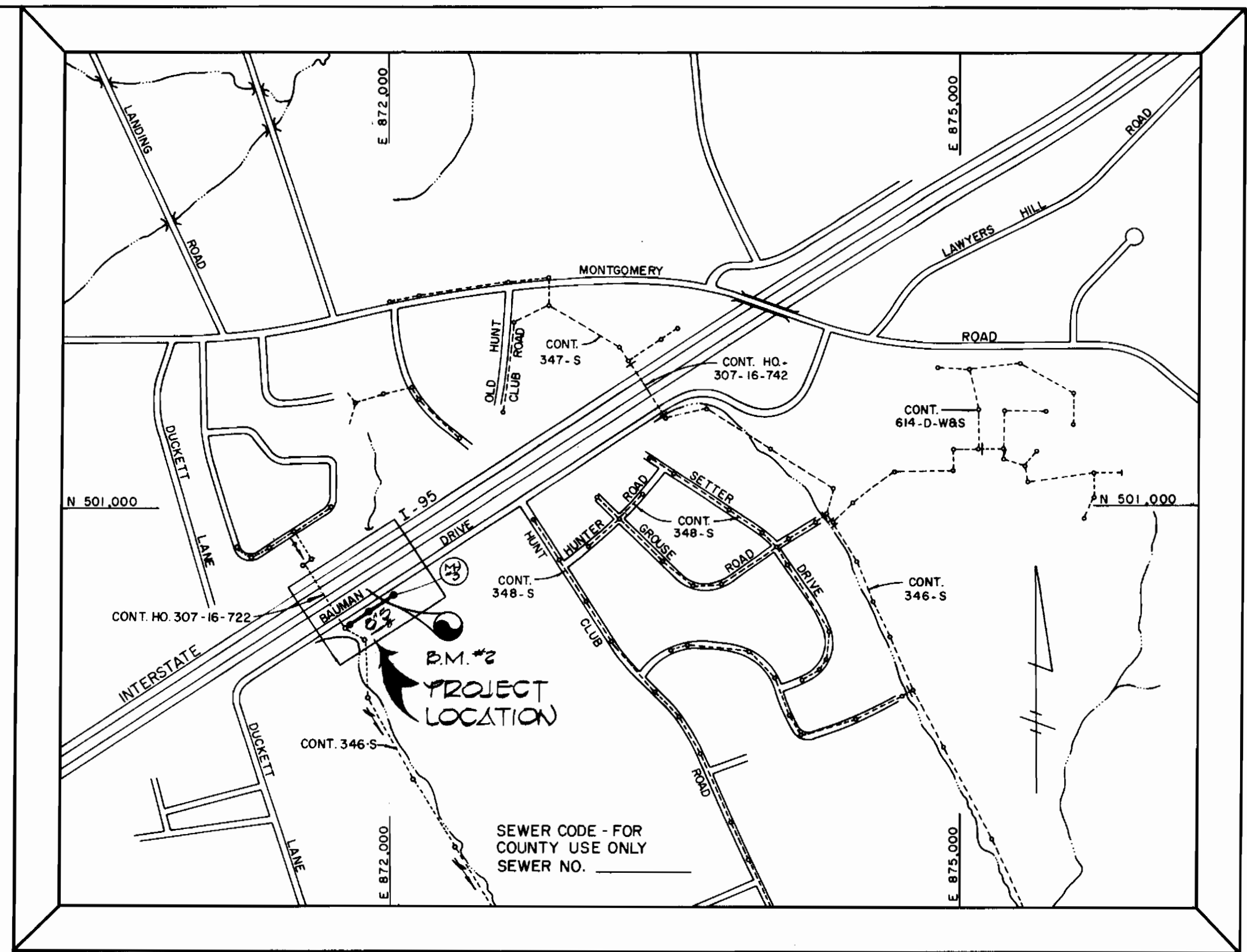


BENCH MARKS

B.M. #1 ELEV. 223.90
 1/4" NAIL SET 20' NORTH OF HOUSE
 400'S (T.C.C. TRANSVERSE STA. T-T)
 B.M. #2 ELEV. 221.10
 HO CO MON #2046008-2 (T.C.C. TRANSVERSE STA. T-2) 1000' SOUTH OF HUNT CLUB ROAD (SEE VICINITY MAP)



NUMBER OF LOTS - 1
 NUMBER OF SEWER HSE. CONN. - 1
 DRAINAGE AREA - PATATSCO
VICINITY MAP
 SCALE: 1" = 600'

GENERAL NOTES

- APPROXIMATE LOCATION OF EXISTING MAINS ARE SHOWN THE CONTRACTOR SHALL TAKE ALL NECESSARY PRECAUTIONS TO PROTECT EXISTING MAINS AND SERVICES AND MAINTAIN UNINTERRUPTED SUPPLY ANY DAMAGE INCURRED SHALL BE REPAIRED IMMEDIATELY TO THE SATISFACTION OF THE ENGINEER, AT THE CONTRACTORS EXPENSE.
- ALL HORIZONTAL CONTROLS ARE BASED ON MARYLAND STATE COORDINATES.
- ALL VERTICAL CONTROLS ARE BASED ON U.S.G. DATUM.
- ALL PIPE ELEVATIONS SHOWN ARE INVERT ELEVATIONS.
- CLEAR ALL UTILITIES BY A MINIMUM OF 6" CLEAR ALL POLES BY 2'-0" MINIMUM OR TUNNEL AS REQUIRED. ANY COST INCURRED TO THE CONTRACTOR FOR TUNNELING OR BRACING AT POLES SHALL BE INCLUDED IN UNIT PRICES BID FOR CONSTRUCTION OF THE MAIN.
- FOR DETAILS NOT SHOWN ON THE DRAWING USE HOWARD COUNTY STANDARD DETAILS.
- FOR MATERIAL AND CONSTRUCTION METHODS USE HOWARD COUNTY STANDARD SPECIFICATIONS.
- CONTRACTOR SHALL LOCATE EXISTING UTILITIES A MINIMUM OF TWO (2) WEEKS IN ADVANCE OF CONSTRUCTION OPERATIONS IN THE VICINITY OF PROPOSED UTILITIES AT HIS OWN EXPENSE.
- CONTRACTOR SHALL NOTIFY THE FOLLOWING UTILITIES OR AGENCIES AT LEAST FIVE (5) WORKING DAYS BEFORE STARTING WORK SHOWN ON THESE PLANS:
 BALTIMORE GAS & ELECTRIC COMPANY-UNDERGROUND ELECTRIC DISTRIBUTION
 CUSTOMER SERVICE - 685-0123
 BALTIMORE GAS & ELECTRIC COMPANY-UNDERGROUND GAS DISTRIBUTION
 CUSTOMER SERVICE - 685-0123
 ENGINEERING - "DAMAGE CONTROL" - 234-5621
 "MISS UTILITY" - 1-559-0100
 CHESAPEAKE & POTOMAC (C&P) TELEPHONE - 725-9976
 BUREAU OF UTILITIES HOWARD COUNTY - 992-2366
- TREES ARE TO BE PROTECTED FROM DAMAGE TO MAXIMUM EXTENT. TREES LOCATED WITHIN THE CONSTRUCTION STRIP ARE NOT TO BE REMOVED OR DAMAGED BY THE CONTRACTOR.
- CONTRACTOR SHALL REMOVE TREES, STUMPS AND ROOTS ALONG LINE OF EXCAVATION AS DIRECTED BY THE ENGINEER. PAYMENT FOR SUCH REMOVAL SHALL BE INCLUDED IN THE UNIT PRICE BID FOR PIPE INSTALLATION.
- PLACE REGULATION "MEN WORKING" AND WARNING SIGNS AS REQUIRED TO COMPLY WITH MARYLAND STATE HIGHWAY ADMINISTRATION MANUAL OR TRAFFIC CONTROL FOR HIGHWAY CONSTRUCTION AND MAINTENANCE OPERATIONS.
- ALL SEWER MAINS SHALL BE D.I.P., V.C.P.X. OR A.C.P. CLASS 2400, P.V.C. OR H.D.P.E., UNLESS OTHERWISE NOTED.
- THE CONTRACTOR SHALL PROVIDE A JOINT IN ALL SEWER MAINS WITHIN 2'-0" OF EXTERIOR WALLS.
- ALL MANHOLES SHALL BE 4'-0" INSIDE DIAMETER, UNLESS OTHERWISE NOTED.
- MANHOLES SHOWN WITH 12" AND 16" WALLS ARE BRICK MANHOLES ONLY.

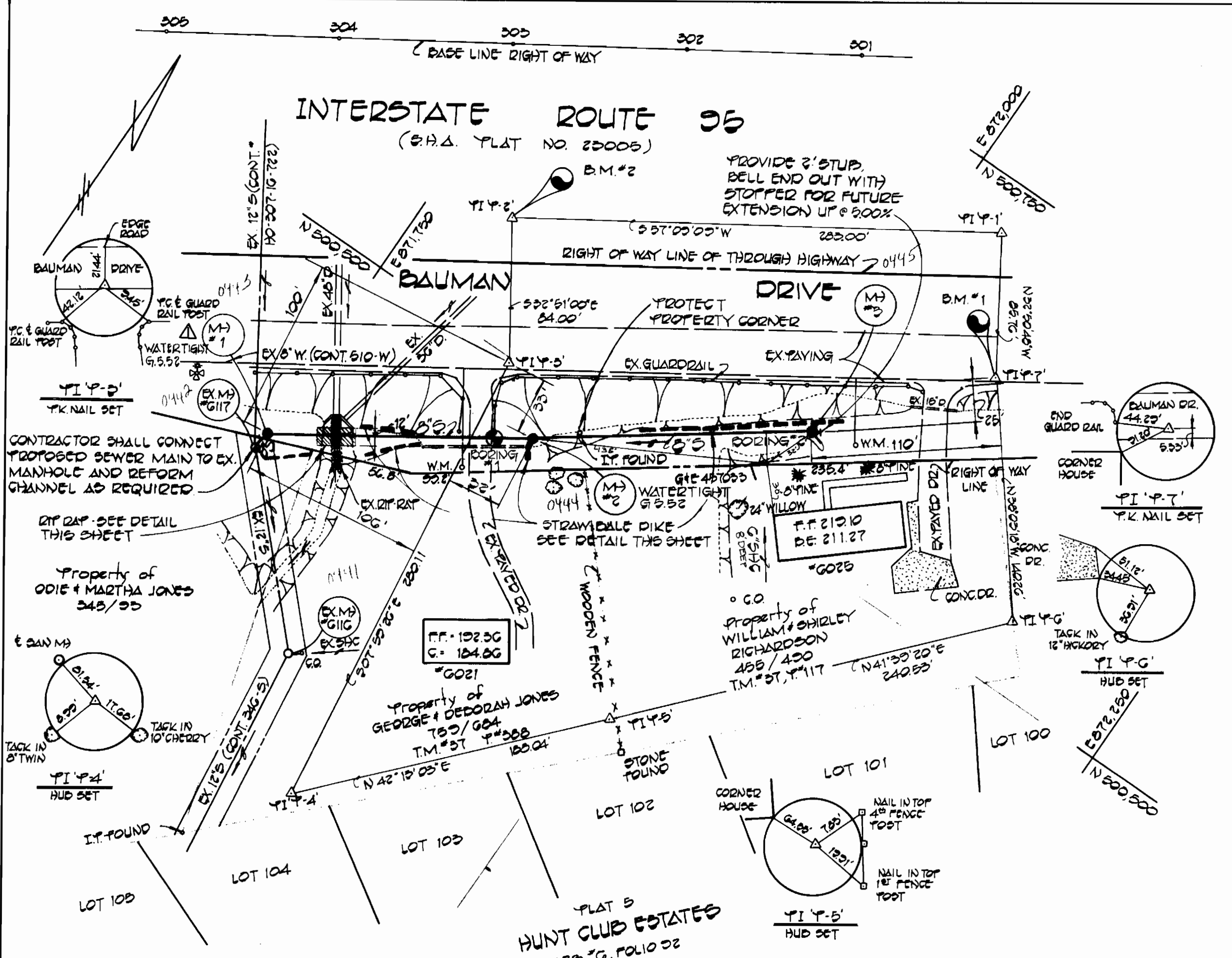
QUANTITIES

ITEM	EST'D	AS-BUILT	SUPPLIER
8" SEWER	331 L.F.	316 1/8 STD. 15' LING	DELMAR RD SUPPLY
6" SEWER	18 L.F.	20	HP
MANHOLE	31.0 V.F.	3 EACH	TERRE HILL

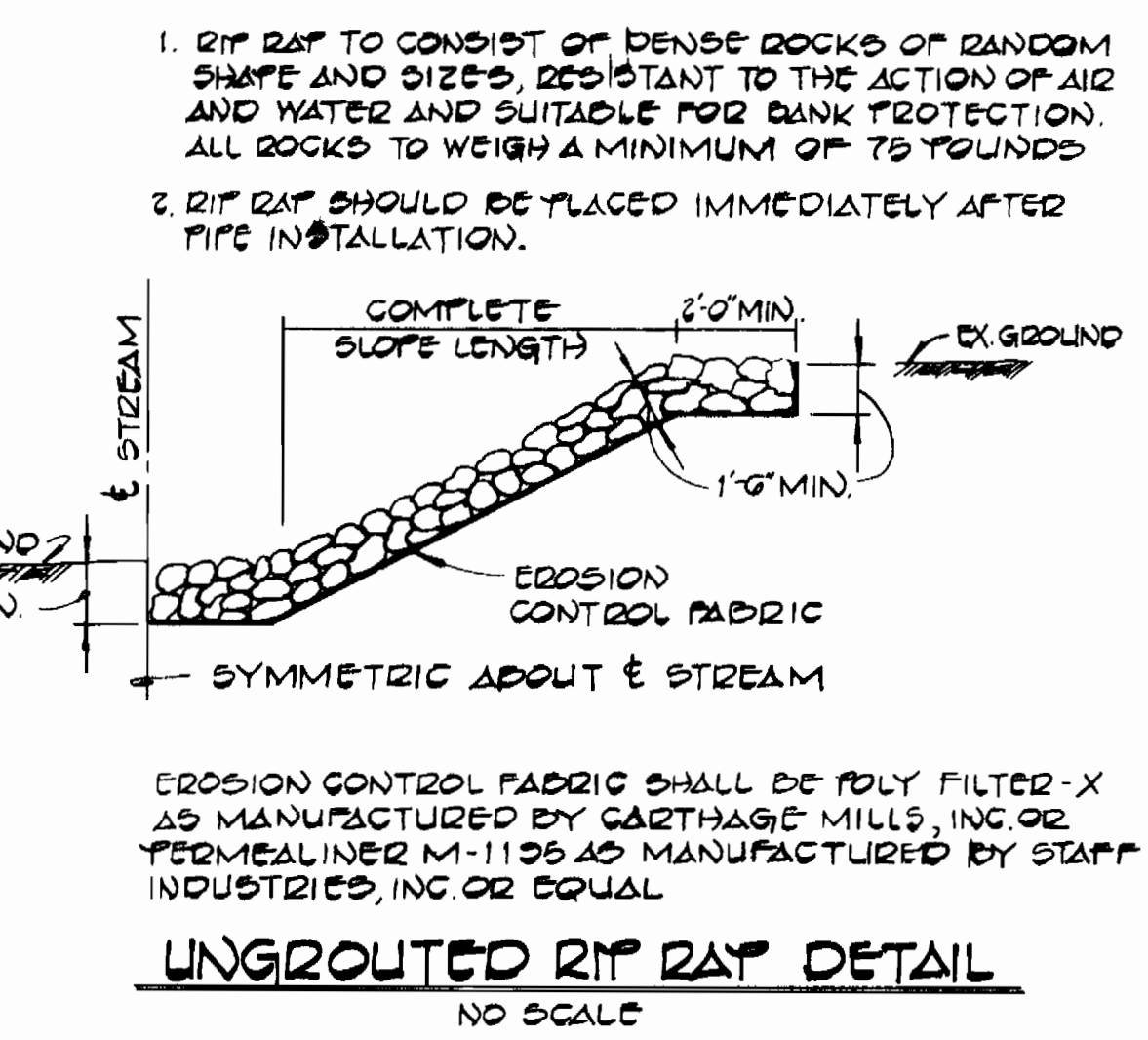
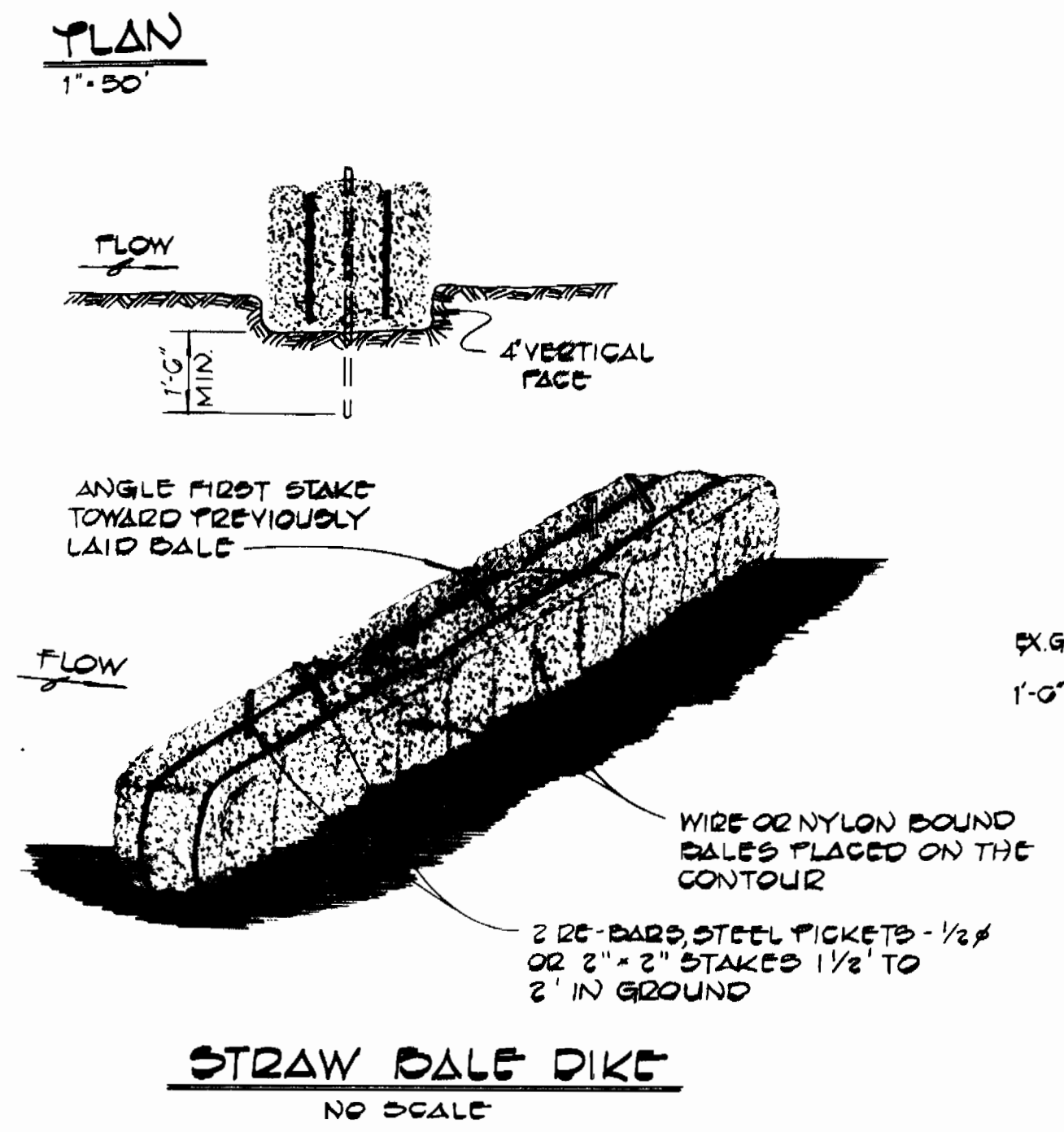
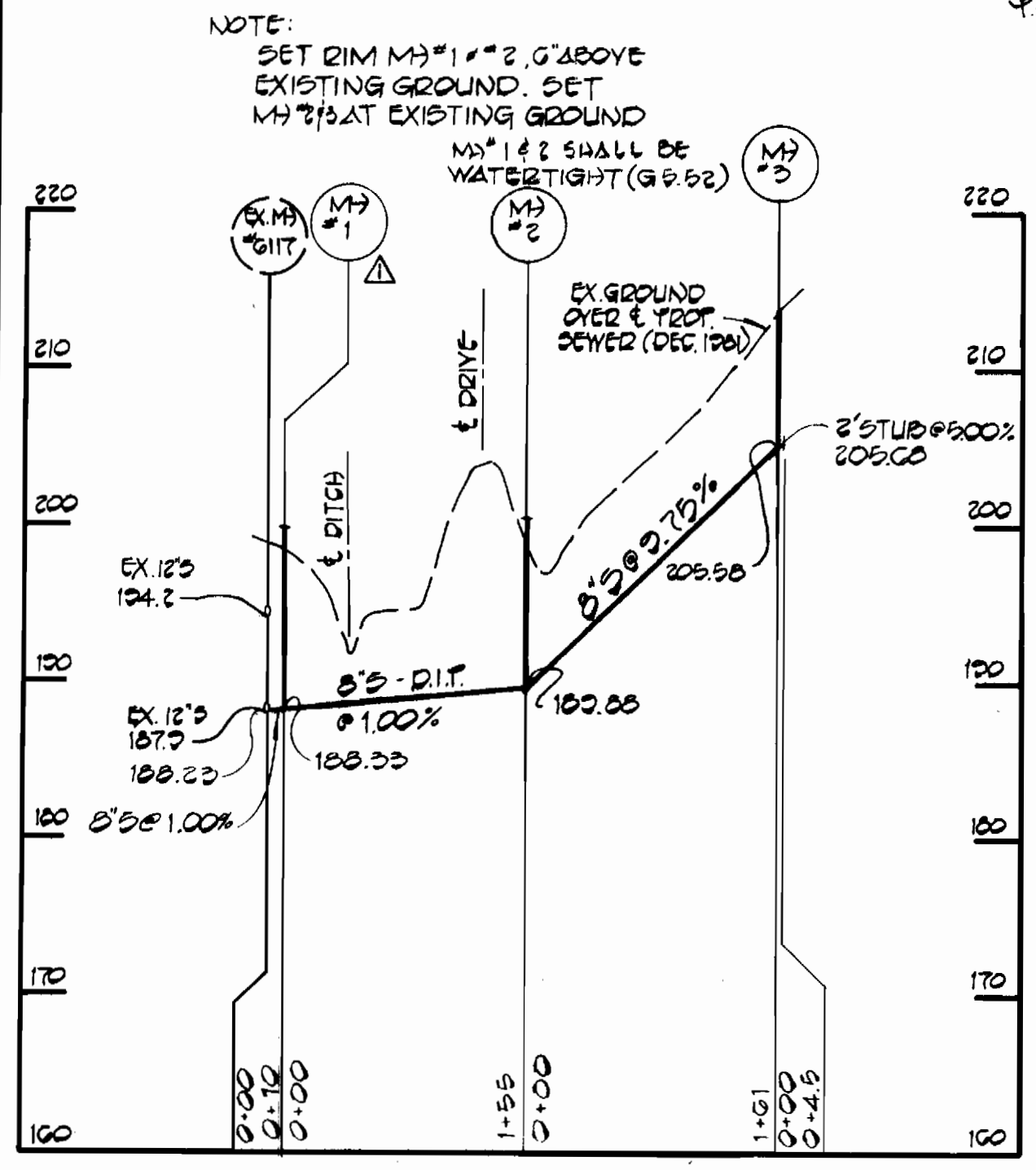
REVISIONS

NO.	DATE	DESCRIPTION
1	9-10-82	MANHOLE #1 ADDED TO ELIMINATE NEED FOR PRIVATE RIGHT OF WAY ON ODE JONES PROPERTY

CONTRACT NO. 10-1035
 CAPITAL PROJECT S-6123
 BAUMAN DRIVE
 SEWER MAIN EXTENSION
 HOWARD COUNTY, MD.
BAUMAN DRIVE SEWER MAIN EXTENSION ELECTION DISTRICT I HOWARD COUNTY, MARYLAND
 DRAWING NO. 1 OF 1
 SCALE AS SHOWN
 DES. D.B.S.
 DRN. D.B.S.
 CHK. T.A.F.
 SEPTEMBER 16, 1982



NOTE: ALL DISTURBED DITCH AREAS SHALL BE RETURNED TO ORIGINAL GRADE & CROSS SECTION OR BETTER & SOEDED IMMEDIATELY



DEPARTMENT OF PUBLIC WORKS
 HOWARD COUNTY, MARYLAND
 Director of Public Works: *John F. Neuman* 7-1-82
 Chief, Bureau of Engineering: *Robert M. Bunn* 6-25-82
 Chief, Utility Division: *Allen J. Brown* 6/5/82

William J. Fisher 10/23/82
 TERRILL F. FISHER
FISHER, COLLINS AND CARTER, INC.
 CIVIL ENGINEERS AND LAND SURVEYORS
 8388 COURT AVENUE
 ELLICOTT CITY, MARYLAND 21043

THIS PLAN IS APPROVED FOR EROSION AND SEDIMENT CONTROL BY THE HOWARD SOIL CONSERVATION DISTRICT.
William J. Fisher 5-11-82
 HOWARD SOIL CONSERVATION DISTRICT DATE

REVIEWED FOR HOWARD COUNTY SOIL CONSERVATION DISTRICT AND MEETS TECHNICAL REQUIREMENTS.
William J. Fisher 5-12-82
 HOWARD COUNTY SOIL CONSERVATION SERVICE DATE

CONTRACT NO. 10-1035
 CAPITAL PROJECT S-6123
 BAUMAN DRIVE
 SEWER MAIN EXTENSION
 HOWARD COUNTY, MD.
BAUMAN DRIVE SEWER MAIN EXTENSION ELECTION DISTRICT I HOWARD COUNTY, MARYLAND
 DRAWING NO. 1 OF 1
 SCALE AS SHOWN
 DES. D.B.S.
 DRN. D.B.S.
 CHK. T.A.F.
 SEPTEMBER 16, 1982

AS-BUILT JULY, 1985