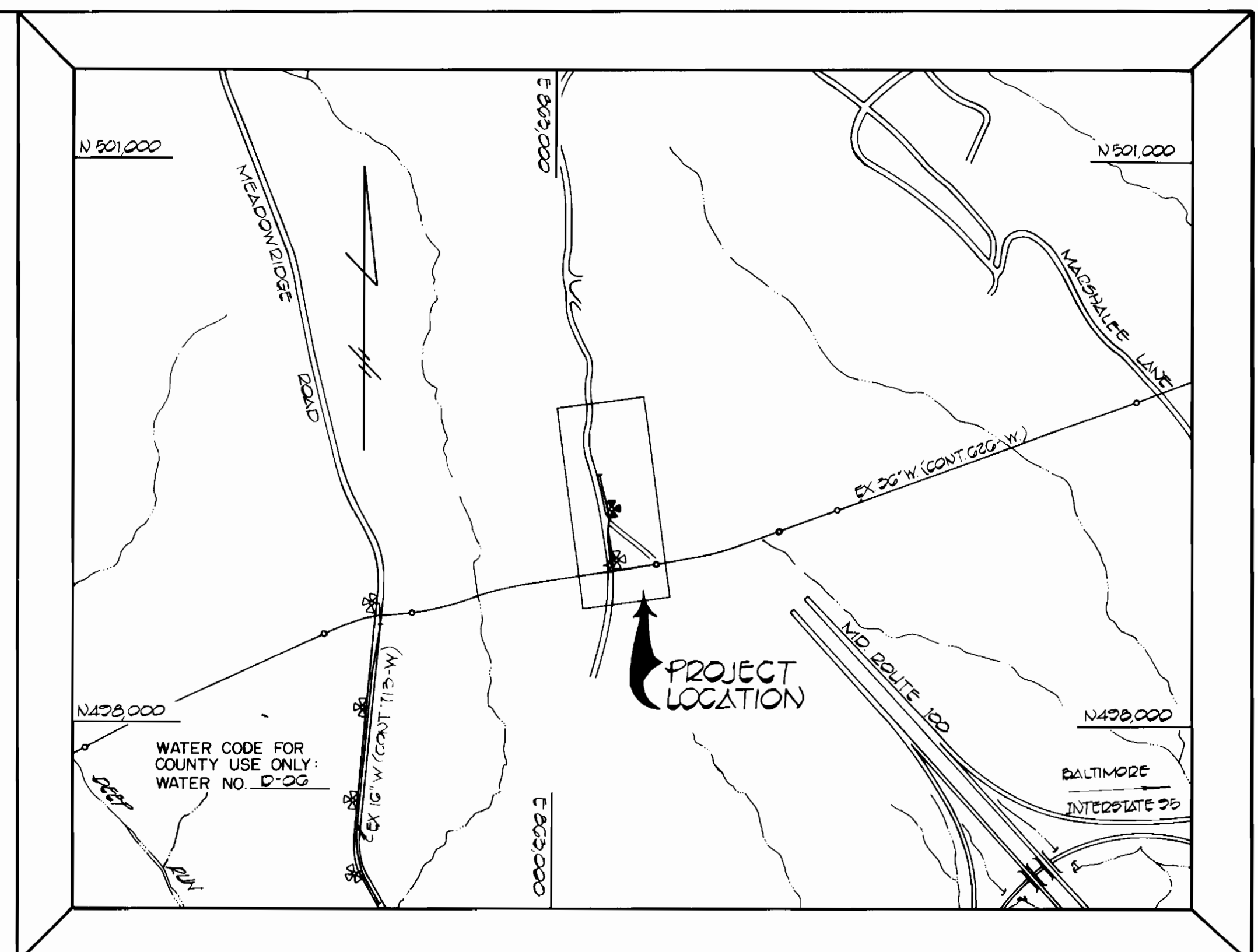
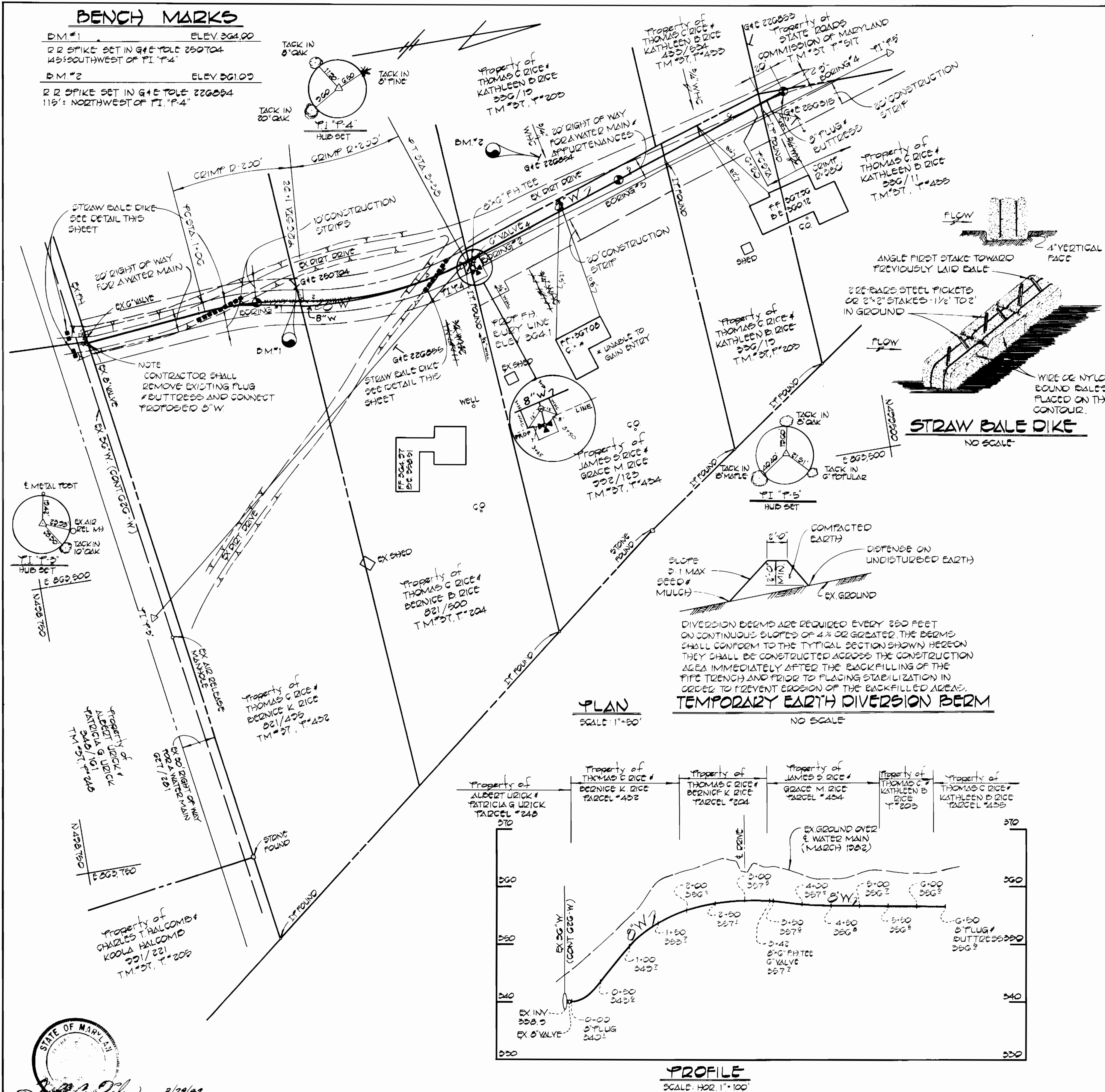


BENCH MARKS

BM #1 ELEV. 264.00
 R 2 SPIKE SET IN G 1/2 TOL 250704
 45' SOUTHWEST OF PI "P 4"

BM #2 ELEV. 261.00
 R 2 SPIKE SET IN G 1/2 TOL 226054
 115' NORTHWEST OF PI "P 4"



TYPE OF BUILDINGS: RESIDENTIAL
 NUMBER OF PARCELS: 5
 NUMBER OF WATER HOUSE CONNS.: 2
 DRAINAGE AREA: PATAPSCO

VICINITY MAP
 SCALE: 1" = 600'

GENERAL NOTES

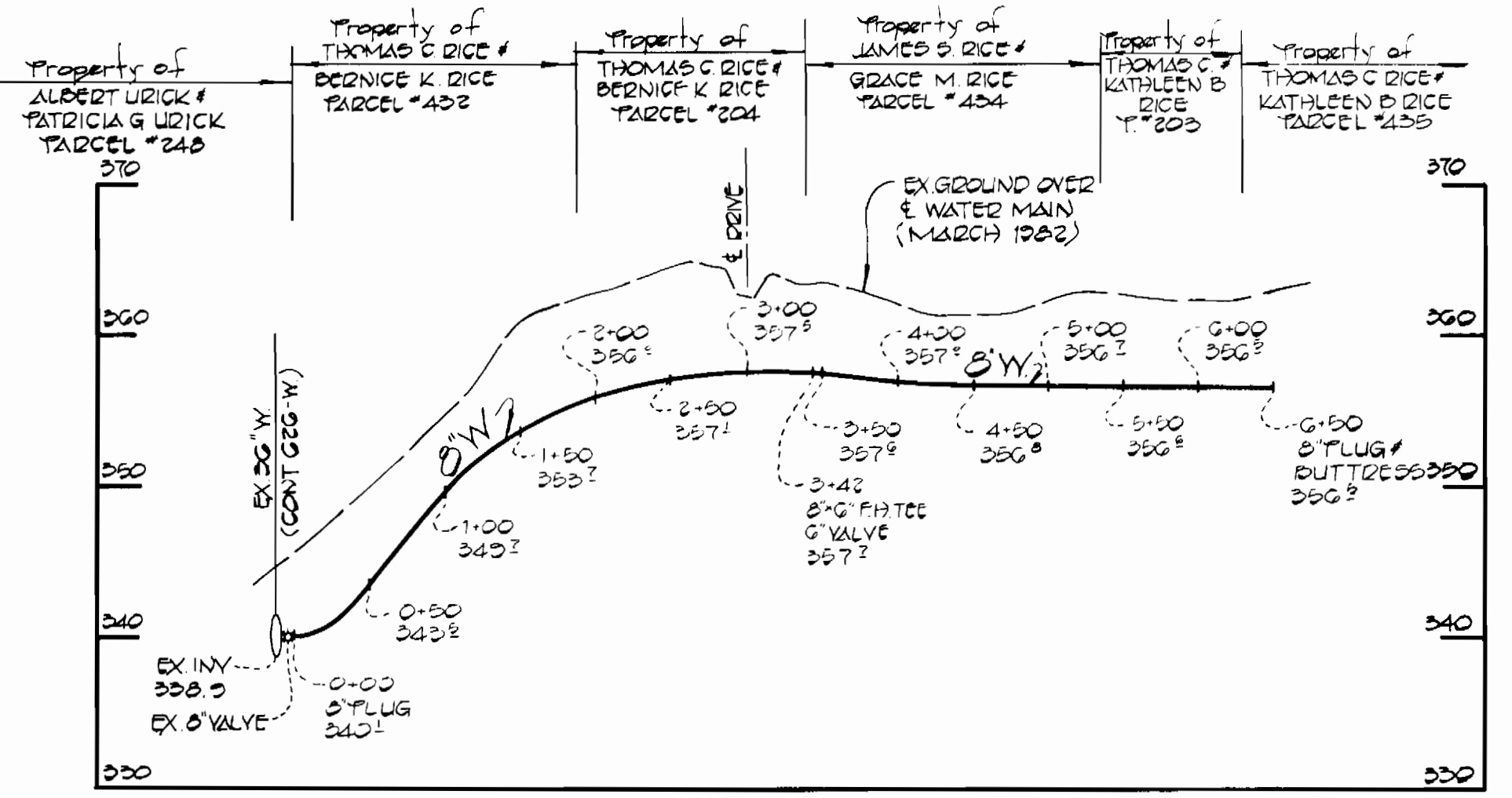
- APPROXIMATE LOCATION OF EXISTING MAINS ARE SHOWN. THE CONTRACTOR SHALL TAKE ALL NECESSARY PRECAUTIONS TO PROTECT EXISTING MAINS AND SERVICES AND MAINTAIN UNINTERRUPTED SUPPLY. ANY DAMAGE INCURRED SHALL BE REPAIRED IMMEDIATELY TO THE SATISFACTION OF THE ENGINEER, AT THE CONTRACTOR'S EXPENSE.
- ALL HORIZONTAL CONTROLS ARE BASED ON MARYLAND STATE COORDINATES.
- ALL VERTICAL CONTROLS ARE BASED ON U.S.G.S. DATUM.
- ALL PIPE ELEVATIONS SHOWN ARE INVERT ELEVATIONS.
- CLEAR ALL UTILITIES BY A MINIMUM OF 6". CLEAR ALL POLES BY 2'-0" MINIMUM OR TUNNEL AS REQUIRED. ANY COST INCURRED TO THE CONTRACTOR FOR TUNNELING OR BRACING AT POLES SHALL BE INCLUDED IN UNIT PRICES BID FOR CONSTRUCTION OF THE MAIN.
- FOR DETAILS NOT SHOWN ON THE DRAWINGS USE HOWARD COUNTY STANDARD DETAILS.
- FOR MATERIALS AND CONSTRUCTION METHODS USE HOWARD COUNTY STANDARD SPECIFICATIONS.
- CONTRACTOR SHALL LOCATE EXISTING UTILITIES A MINIMUM OF TWO (2) WEEKS IN ADVANCE OF CONSTRUCTION OPERATIONS IN THE VICINITY OF PROPOSED UTILITIES AT HIS OWN EXPENSE.
- CONTRACTOR SHALL NOTIFY THE FOLLOWING UTILITIES OR AGENCIES AT LEAST FIVE (5) WORKING DAYS BEFORE STARTING WORK SHOWN ON THESE PLANS:
 BALTIMORE GAS AND ELECTRIC CO. - UNDERGROUND ELECTRIC DISTRIBUTION CUSTOMER SERVICE - (685-0123)
 BALTIMORE GAS AND ELECTRIC CO. - UNDERGROUND GAS DISTRIBUTION CUSTOMER SERVICE - (685-0123)
 ENGINEERING "DAMAGE CONTROL" - (234-5621)
 "MISS UTILITY" - (1-559-0100)
 CHESAPEAKE & POTOMAC (C&P) TELEPHONE COMPANY - (725-9976)
 BUREAU OF UTILITIES, HOWARD COUNTY - (992-2366)
- TREES ARE TO BE PROTECTED FROM DAMAGE TO MAXIMUM EXTENT. TREES LOCATED WITHIN THE CONSTRUCTION STRIP ARE NOT TO BE REMOVED OR DAMAGED BY THE CONTRACTOR.
- CONTRACTOR SHALL REMOVE TREES, STUMPS AND ROOTS ALONG LINE OF EXCAVATION AS DIRECTED BY THE ENGINEER. PAYMENT FOR SUCH REMOVAL SHALL BE INCLUDED IN THE UNIT PRICE BID FOR CONSTRUCTION OF THE MAIN.
- ALL WATER MAINS TO BE C.I.P., P.C.C.P. OR D.I.P. UNLESS OTHERWISE NOTED.
- TOP OF ALL WATER MAINS TO HAVE A MINIMUM OF 3'-6" COVER UNLESS OTHERWISE NOTED.
- VALVES ADJACENT TO TEES SHALL BE STRAPPED TO TEES.
- BLOCK ALL FITTINGS WITH CONCRETE.
- BURY LINE ELEVATIONS ON FIRE HYDRANTS SHALL BE SET TO THE ELEVATIONS SHOWN ON THE DRAWINGS. ALL FIRE HYDRANTS SHALL BE STRAPPED AND BUTTRESSED WITH CONCRETE IN ACCORDANCE WITH STANDARD DETAILS. SOIL AROUND THE FIRE HYDRANT TO BE COMPACTED IN ACCORDANCE WITH SECTION 37.01 AND 37.05 OF THE STANDARD SPECIFICATIONS.
- ALL WATER HOUSE CONNECTIONS SHALL BE FOR AN INSIDE METER SETTING.
- THE CONTRACTOR SHALL NOT OPERATE ANY WATER MAIN VALVES ON THE EXISTING SYSTEM.
- WATER MAIN AND WATER HOUSE CONNECTION LINES MUST BE PLACED SO AS TO HAVE AT LEAST ONE (1) FOOT SEPARATION FROM THE SEWER MAIN OR SEWER HOUSE CONNECTION AS THEY PASS ABOUT IT.

QUANTITIES

ITEM	EST'D	AS-BUILT	SUPPLIER
8" WATER	650 L.F.	650 L.F.	GRIFFIN
6" WATER	10 L.F.	10 L.F.	GRIFFIN
3/4" W.H.C.	70 L.F.	60 L.F.	TYPE K
FIRE HYD.	1 EA	1 EA.	M.F.H.

PLAN
 SCALE: 1" = 50'

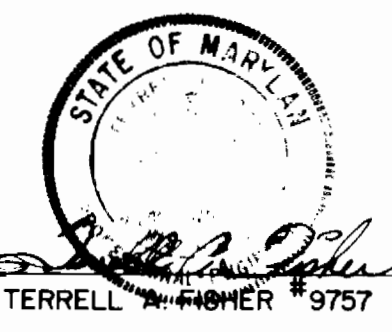
TEMPORARY EARTH DIVERSION BERM
 NO SCALE



PROFILE
 SCALE: HORIZ. 1" = 100'
 VERT. 1" = 10'

THIS PLAN IS APPROVED FOR EROSION AND SEDIMENT CONTROL BY THE HOWARD SOIL CONSERVATION DISTRICT.
 APPROVED: *William V. Rowe* 5/28/82
 HOWARD SOIL CONSERVATION DISTRICT DATE

REVIEWED FOR HOWARD COUNTY SOIL CONSERVATION DISTRICT AND MEETS TECHNICAL REQUIREMENTS.
 REVIEWED BY: *James M. Delaney* 5/28/82
 U.S. SOIL CONSERVATION SERVICE DATE



DEPARTMENT OF PUBLIC WORKS
 HOWARD COUNTY, MARYLAND

Joseph F. Newman 5-10-82
 DIRECTOR OF PUBLIC WORKS DATE

Allen S. Brown 5-6-82
 CHIEF, BUREAU OF UTILITIES DATE

Allen S. Brown 5/5/82
 CHIEF, BUREAU OF ENGINEERING DATE

FISHER, COLLINS AND CARTER, INC.
 CIVIL ENGINEERS AND LAND SURVEYORS
 8388 COURT AVENUE
 ELLICOTT CITY, MARYLAND 21043

CONTRACT NO. 44-1033
 CAPITAL PROJECT W-8122

PLAN AND PROFILE

MULLINEAUX ROAD
WATER MAIN EXTENSION
HOWARD COUNTY, MARYLAND
ELECTION DISTRICT I

DRAWING NO. 1 OF 1
 SCALE AS SHOWN
 DES. D.B.S.
 DRN. D.B.S.
 CHK. T.A.F.

AT 211 22 1282
 AS-BUILT NOV. 23, 1982