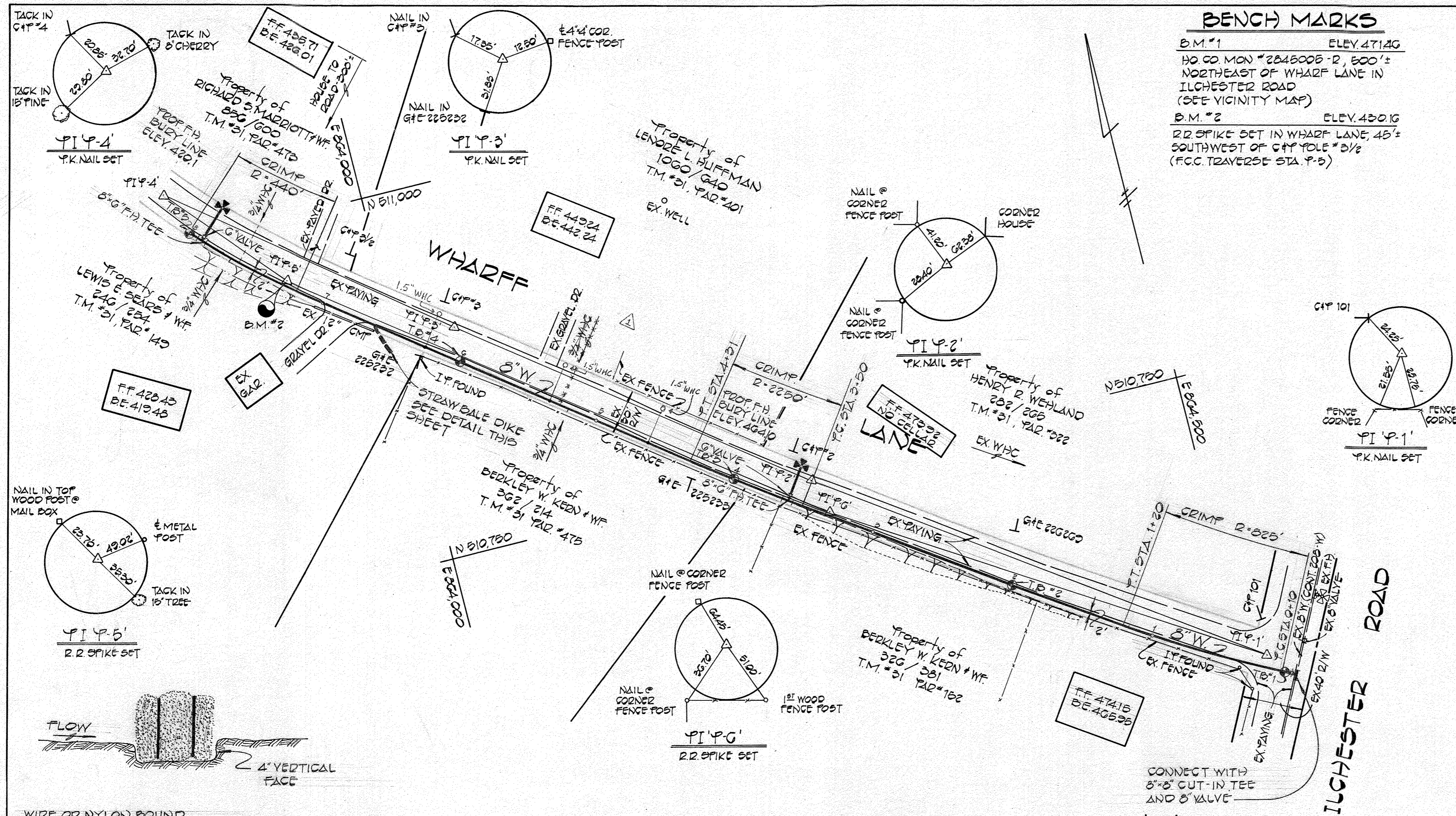
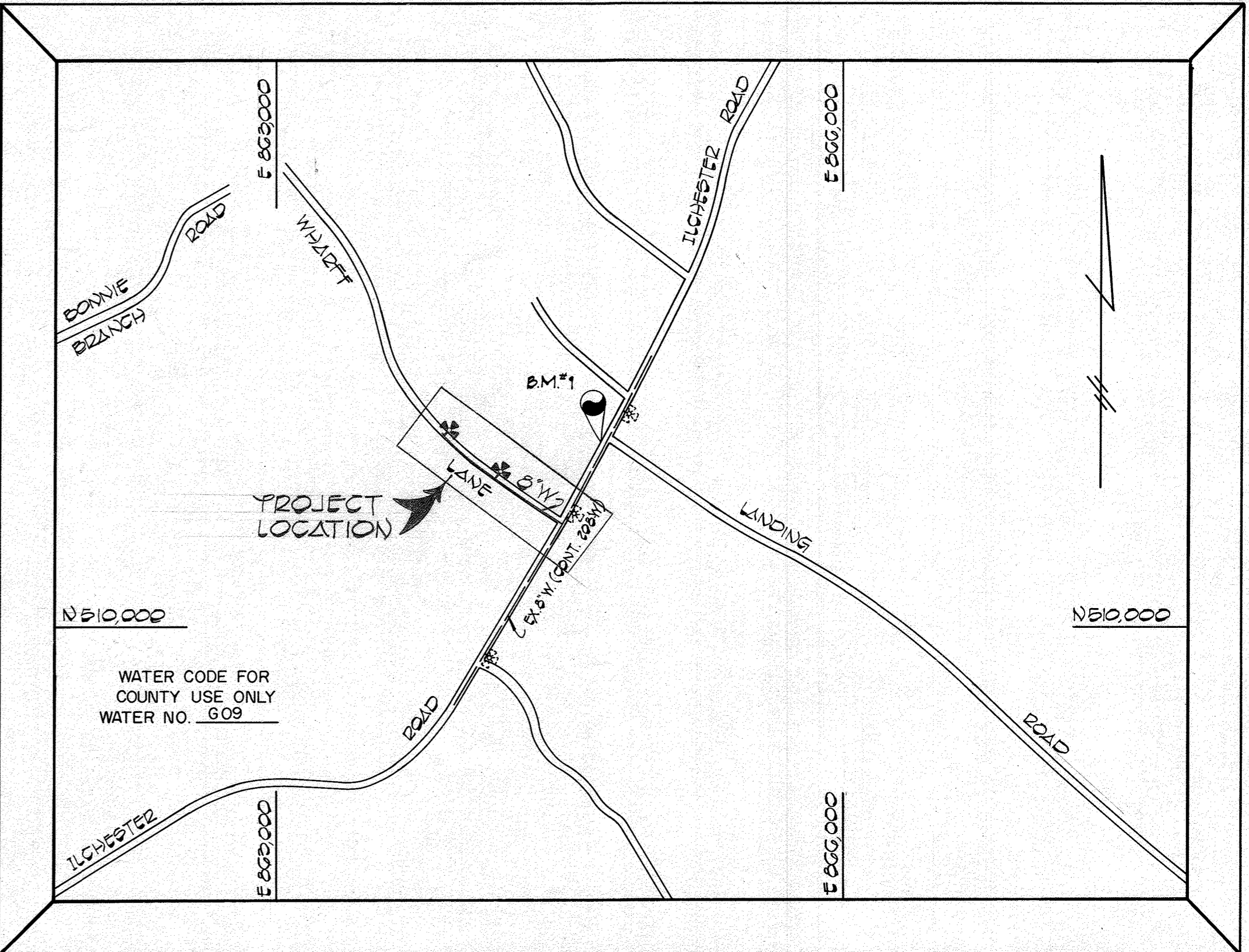


1031/W



**BENCH MARKS**  
 B.M. #1 ELEV. 471.40  
 HO CO MON #2048000-R, 500'-0"  
 NORTHEAST OF WHARFF LANE IN  
 ILCHESTER ROAD  
 (SEE VICINITY MAP)  
 B.M. #2 ELEV. 400.16  
 12.0 SPIKE SET IN WHARFF LANE, 48'-0"  
 SOUTHWEST OF CHY POLE #3/2  
 (FCC TRVERSE STA. P-5)

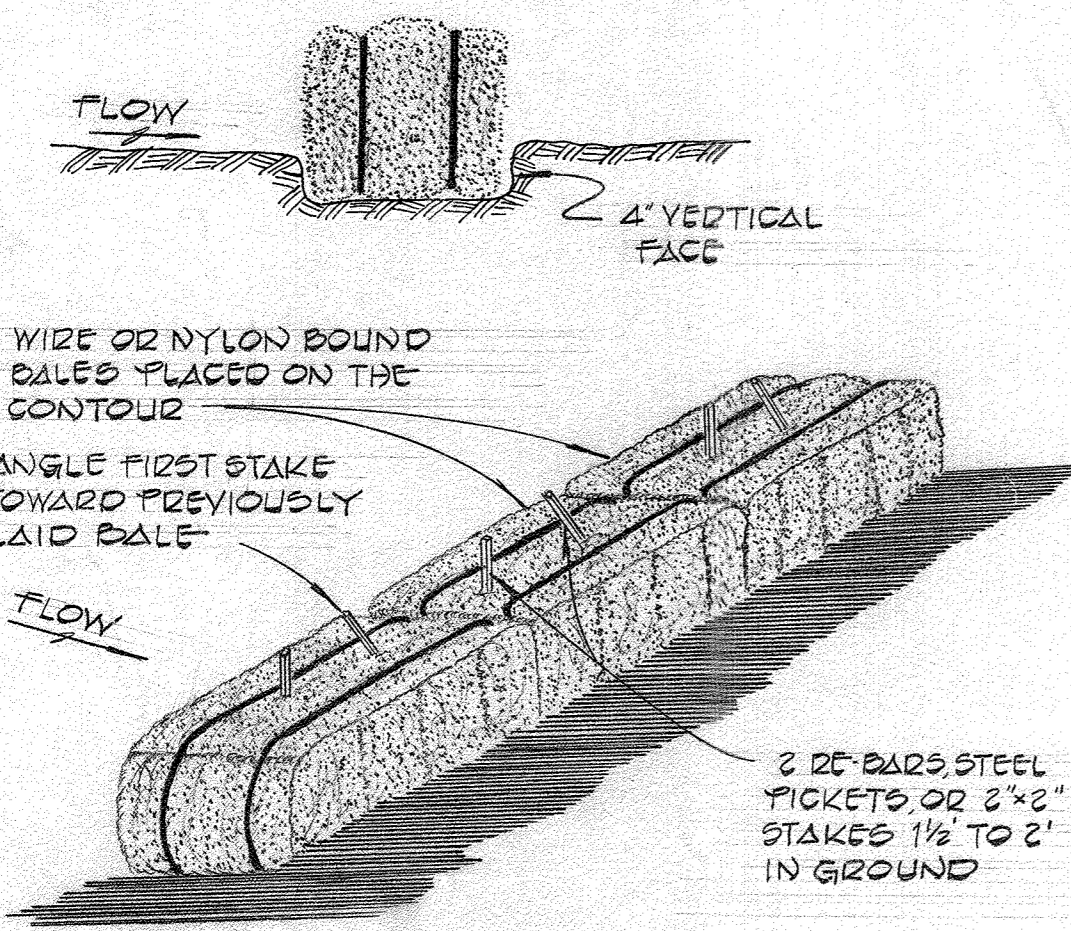


TYPE OF BUILDINGS: RESIDENTIAL  
 NUMBER OF PARCELS: 4  
 NUMBER OF WATER HOUSE CONNS.: 4  
 DRAINAGE AREA: PATAPSCO

**VICINITY MAP**  
 SCALE: 1" = 600'

**GENERAL NOTES**

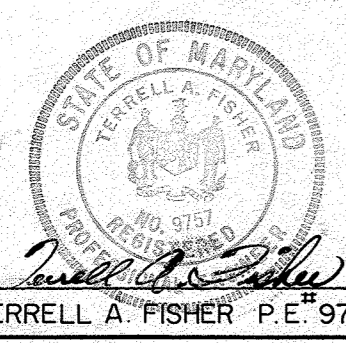
- APPROXIMATE LOCATION OF EXISTING MAINS ARE SHOWN. THE CONTRACTOR SHALL TAKE ALL NECESSARY PRECAUTIONS TO PROTECT EXISTING MAINS AND SERVICES AND MAINTAIN UNINTERRUPTED SUPPLY. ANY DAMAGE INCURRED SHALL BE REPAIRED IMMEDIATELY TO THE SATISFACTION OF THE ENGINEER, AT THE CONTRACTORS EXPENSE.
- ALL HORIZONTAL CONTROLS ARE BASED ON MARYLAND STATE COORDINATES.
- ALL VERTICAL CONTROLS ARE BASED ON U.S.G.S. DATUM.
- ALL PIPE ELEVATIONS SHOWN ARE INVERT ELEVATIONS.
- CLEAR ALL UTILITIES BY A MINIMUM OF 6'. CLEAR ALL POLES BY 2'-0" MINIMUM OR TUNNEL AS REQUIRED. ANY COST INCURRED TO THE CONTRACTOR FOR TUNNELING OR BRACING AT POLES SHALL BE INCLUDED IN UNIT PRICES BID FOR EXCAVATION AND BACKFILL.
- FOR DETAILS NOT SHOWN ON DRAWING USE HOWARD COUNTY STANDARD DETAILS.
- FOR MATERIALS AND CONSTRUCTION METHODS USE HOWARD COUNTY STANDARD SPECIFICATIONS.
- CONTRACTOR SHALL LOCATE EXISTING UTILITIES A MINIMUM OF TWO (2) WEEKS IN ADVANCE OF CONSTRUCTION OPERATIONS IN THE VICINITY OF PROPOSED UTILITIES AT HIS OWN EXPENSE.
- CONTRACTOR SHALL NOTIFY THE FOLLOWING UTILITIES OR AGENCIES AT LEAST FIVE (5) WORKING DAYS BEFORE STARTING WORK SHOWN ON THESE PLANS:  
 BALTIMORE GAS AND ELECTRIC CO. - UNDERGROUND ELECTRIC DISTRIBUTION  
 CUSTOMER SERVICE - (685-0123)  
 BALTIMORE GAS AND ELECTRIC CO. - UNDERGROUND GAS DISTRIBUTION  
 CUSTOMER SERVICE - (685-0123)  
 ENGINEERING - " DAMAGE CONTROL " - (234-5621)  
 "MISS UTILITY"- (1-559-0100)  
 CHESAPEAKE & POTOMAC (C&P) TELEPHONE COMPANY - (725-9976)  
 BUREAU OF UTILITIES, HOWARD COUNTY - (992-2366)
- TREES ARE TO BE PROTECTED FROM DAMAGE TO MAXIMUM EXTENT. TREES LOCATED WITHIN THE CONSTRUCTION STRIP ARE NOT TO BE REMOVED OR DAMAGED BY THE CONTRACTOR.
- CONTRACTOR SHALL REMOVE TREES, STUMPS AND ROOTS ALONG LINE OF EXCAVATION AS DIRECTED BY THE ENGINEER. PAYMENT FOR SUCH REMOVAL SHALL BE INCLUDED IN THE UNIT PRICE BID FOR CONSTRUCTION OF THE MAIN.
- PLACE REGULATION "MEN WORKING" AND WARNING SIGNS AS REQUIRED TO COMPLY WITH MARYLAND STATE HIGHWAY ADMINISTRATION MANUAL OF TRAFFIC CONTROL FOR HIGHWAY CONSTRUCTION AND MAINTENANCE OPERATIONS.
- ALL WATER MAINS TO BE C.I.P. OR D.I.P. UNLESS OTHERWISE NOTED.
- TOP OF ALL WATER MAINS TO HAVE A MINIMUM OF 3'-6" COVER UNLESS OTHERWISE NOTED.
- VALVES ADJACENT TO TEES SHALL BE STRAPPED TO TEES.
- BLOCK ALL FITTINGS WITH CONCRETE.
- BURY LINE ELEVATIONS ON FIRE HYDRANTS SHALL BE SET TO THE ELEVATIONS SHOWN ON THE DRAWINGS. ALL FIRE HYDRANTS SHALL BE STRAPPED AND BUTTRESSED WITH CONCRETE IN ACCORDANCE WITH STANDARD DETAILS. SOIL AROUND THE FIRE HYDRANT TO BE COMPACTED IN ACCORDANCE WITH SECTIONS 37.01 AND 37.05 OF THE STANDARD SPECIFICATIONS AND DETAILS.
- ALL WATER HOUSE CONNECTIONS SHALL BE SET FOR AN INSIDE METER SETTING.
- THE CONTRACTOR SHALL NOT OPERATE ANY WATER MAIN VALVES ON THE EXISTING SYSTEM.
- WATER MAIN AND WATER HOUSE CONNECTION LINES MUST BE PLACED SO AS TO HAVE AT LEAST ONE (1) FOOT SEPARATION FROM THE SEWER MAIN OR SEWER HOUSE CONNECTION AS THEY PASS ABOUT IT.



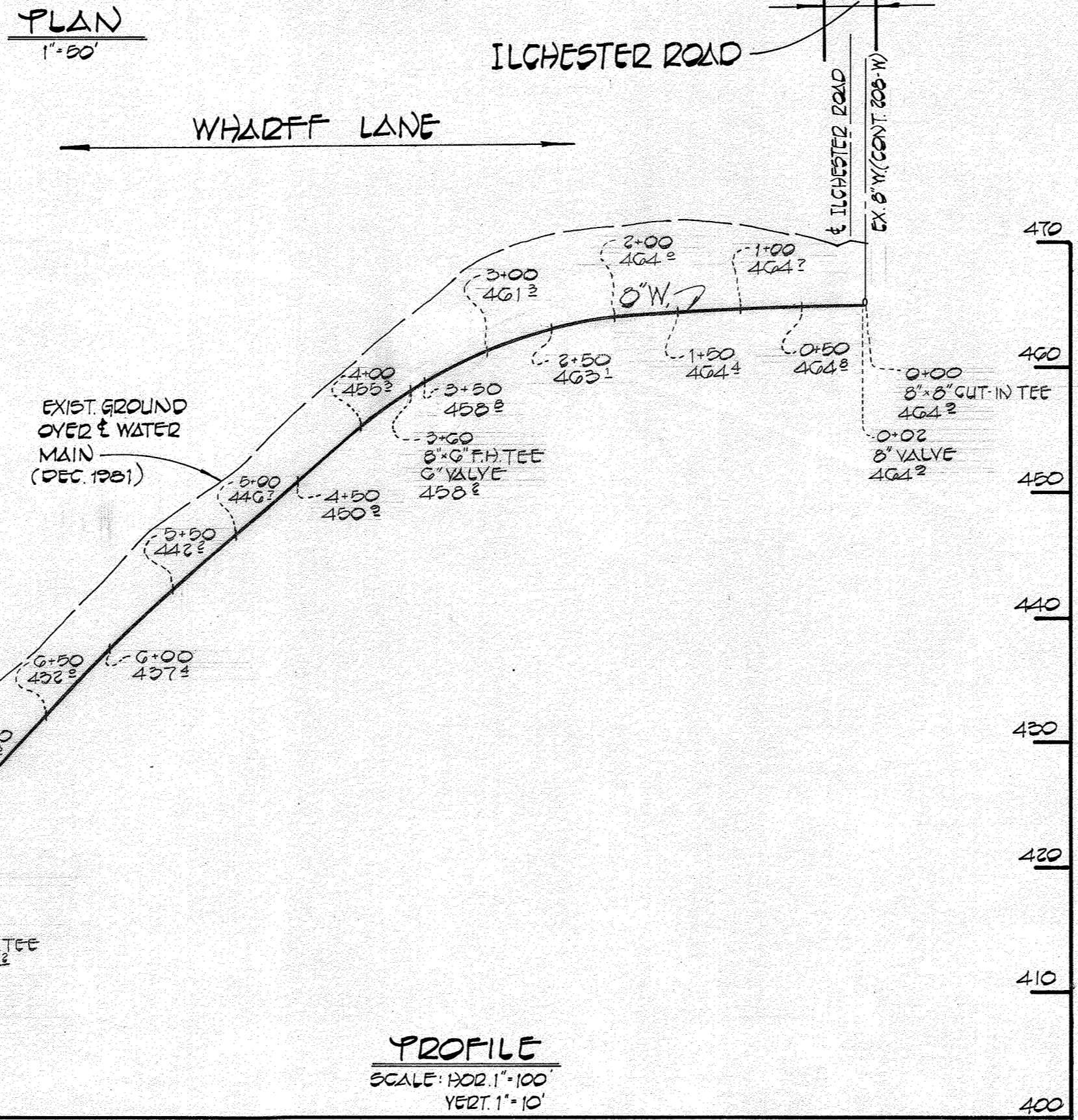
**STRAW BALE DIKE**  
 NO SCALE

THIS PLAN IS APPROVED FOR EROSION AND SEDIMENT CONTROL BY THE HOWARD SOIL CONSERVATION DISTRICT APPROVED: *William J. Home* 1-8-82  
 HOWARD SOIL CONSERVATION DISTRICT DATE

REVIEWED FOR HOWARD COUNTY SOIL CONSERVATION DISTRICT AND METS TECHNICAL REQUIREMENTS  
*Alton S. Brown* 1-8-82  
 U.S. SOIL CONSERVATION SERVICE DATE



**DEPARTMENT OF PUBLIC WORKS**  
 HOWARD COUNTY, MARYLAND  
 Director of Public Works: *Terrell A. Fisher* 1-18-82  
 Chief, Bureau of Engineering: *Alton S. Brown* 1/11/82  
 Chief, Bureau of Utilities: *Alton S. Brown* 1/11/82



**PROFILE**  
 SCALE: 1" = 10' VERT. 1" = 10'

**FISHER, COLLINS AND CARTER, INC.**  
 CIVIL ENGINEERS AND LAND SURVEYORS  
 8388 COURT AVENUE  
 ELLICOTT CITY, MARYLAND 21043

CONTRACT NO. 44-1031  
 CAPITAL PROJECT W-8122

**PLAN & PROFILE**  
**WATER MAINS**

**WHARFF LANE**  
**WATER MAIN EXTENSION**  
**ELECTION DISTRICT I**  
**HOWARD COUNTY, MARYLAND**

DRAWING NO.	SCALE AS SHOWN	DES. D.B.S. DRN. D.B.S. CHK. T.A.F.
1	AS SHOWN	

ITEM	EST'D	AS-BUILT	SUPPLIER
6" WATER	200 LF.		
6" WATER	20 LF.		
FIRE HYD.	2 EA.		
6" VALVES	1 EA.		
6" F.H. VALVES	2 EA.		
3/4" W.H.C.	50 LF.		

CONTRACT NO. 44-1031  
 CAPITAL PROJECT: W-8122  
 WHARFF LANE  
 WATER MAIN EXTENSION  
 HOWARD COUNTY, MARYLAND