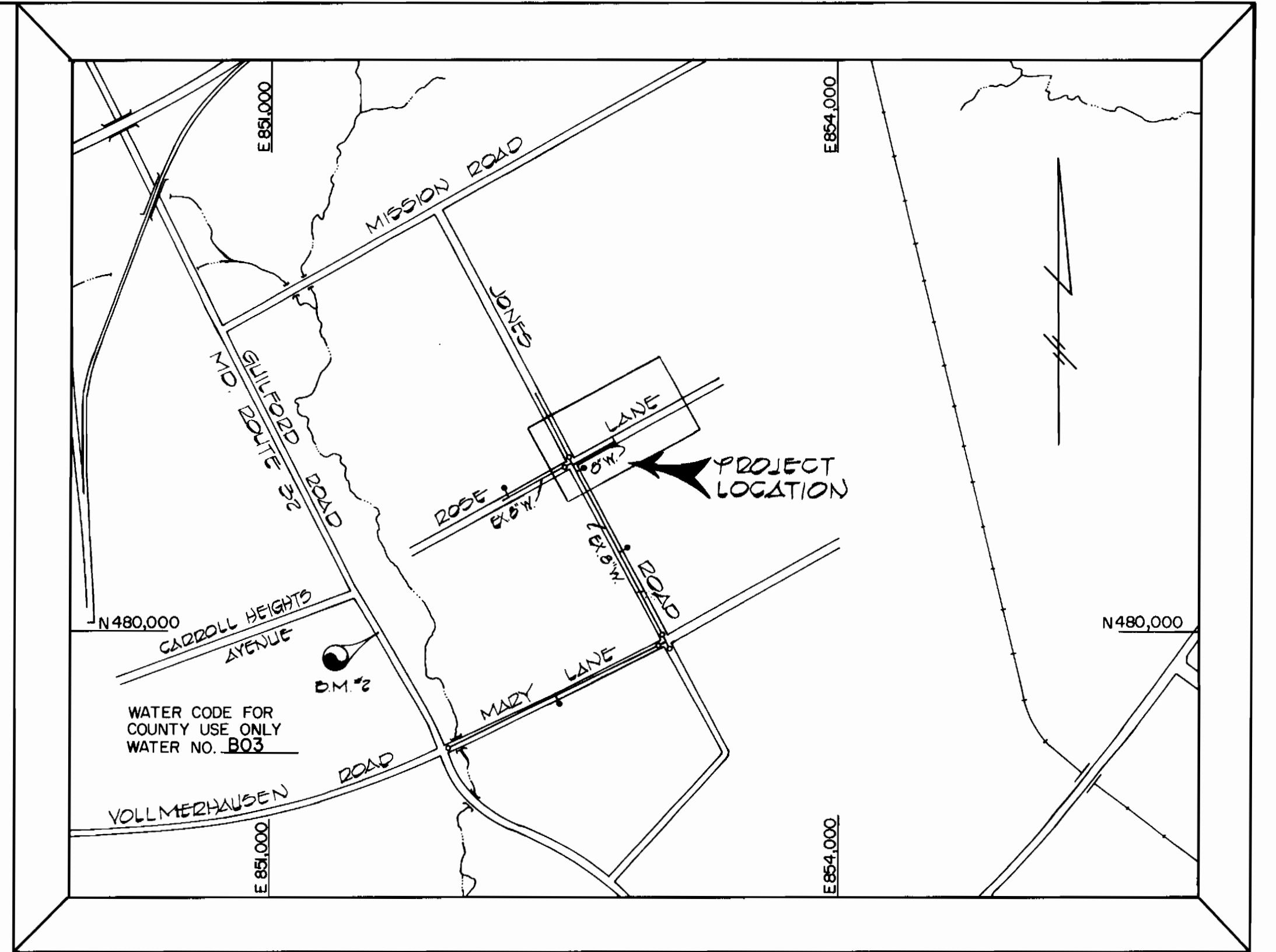


BENCH MARKS

B.M. #1 ELEV. 254.25
 P.K. NAIL SET 25' N. NORTHWEST OF EX
 FIRE HYD. @ JONES ROAD & ROSE LANE
 B.M. #2 ELEV. 254.30
 HO GO MON #2142001-R - 200'
 SOUTH OF GARROLL HEIGHTS AVENUE
 AND GUILFORD ROAD (MD 27E 52.)
 (SEE VICINITY MAP)

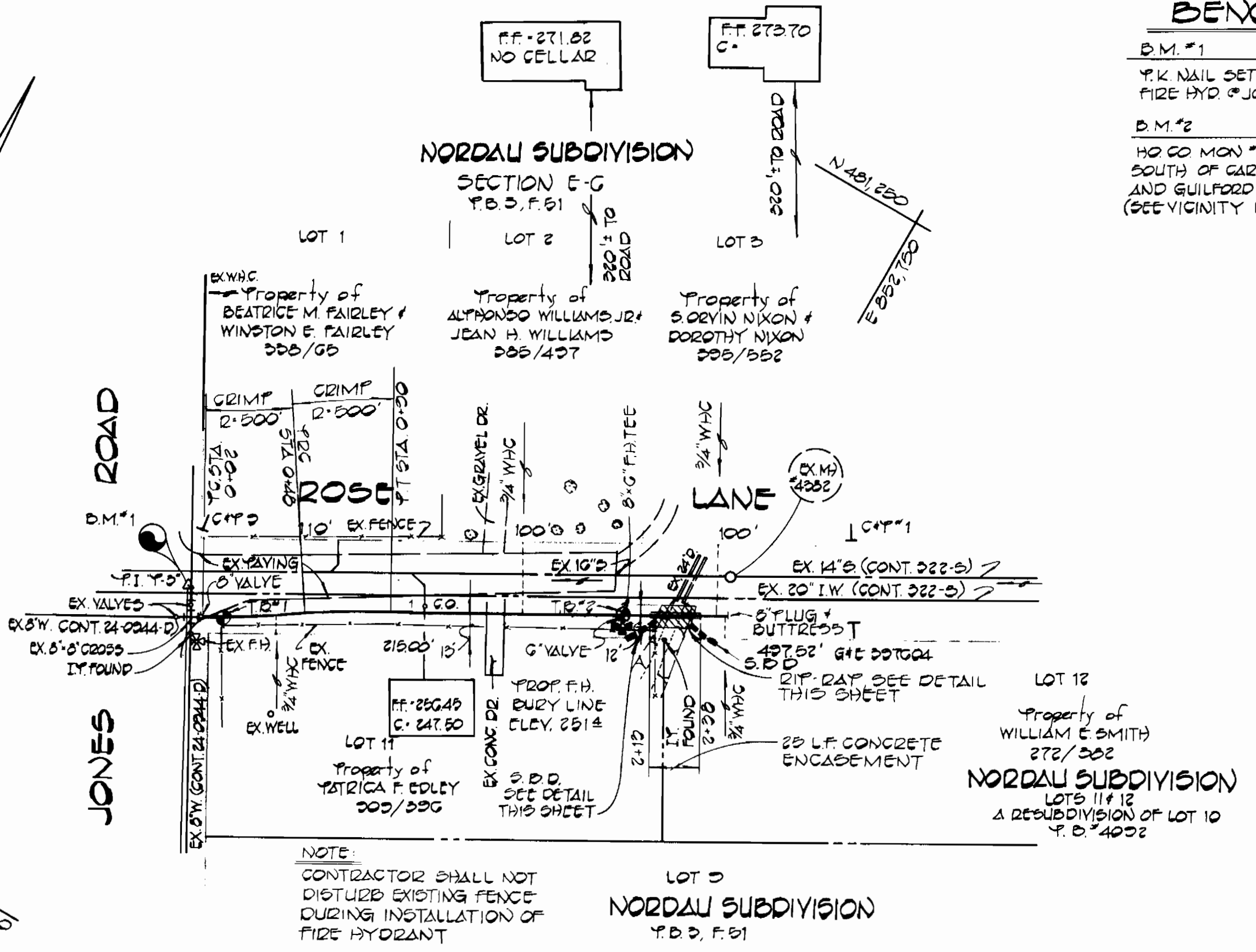


TYPE OF BUILDINGS:	RESIDENTIAL
NUMBER OF PARCELS:	4
NUMBER OF WATER HOUSE CONNS.:	4
DRAINAGE AREA:	LITTLE PATUXENT

VICINITY MAP
 SCALE: 1"=600'

GENERAL NOTES

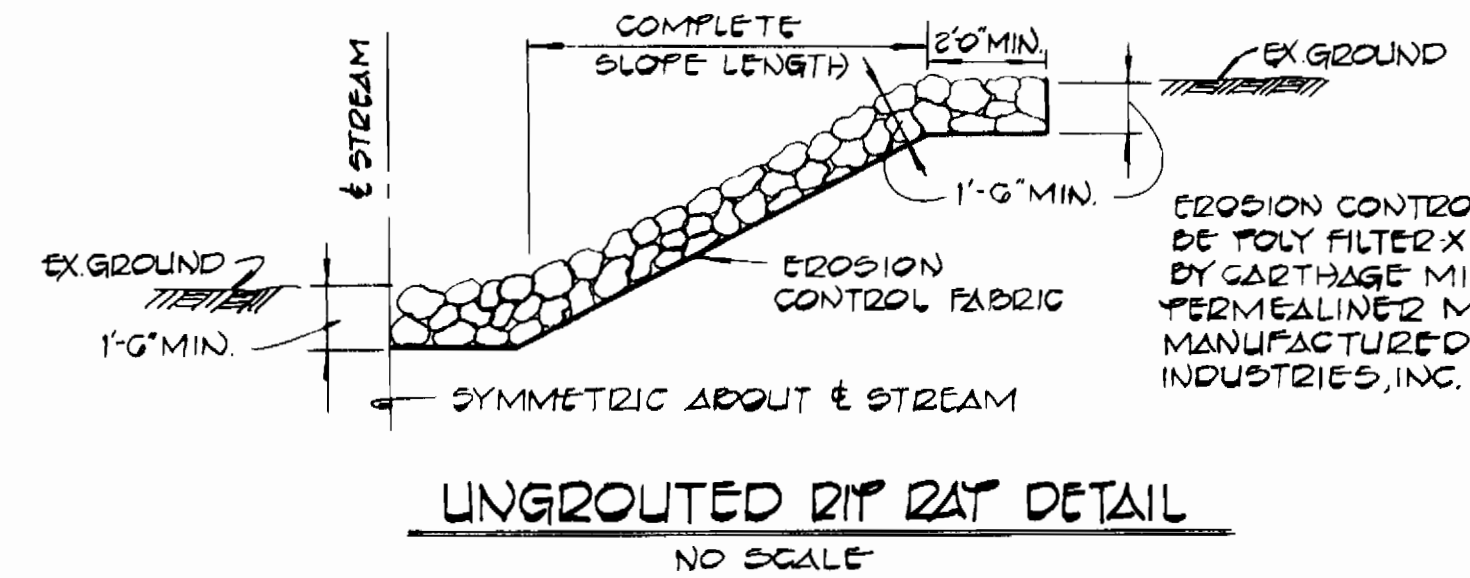
- APPROXIMATE LOCATION OF EXISTING MAINS ARE SHOWN. THE CONTRACTOR SHALL TAKE ALL NECESSARY PRECAUTIONS TO PROTECT EXISTING MAINS AND SERVICES AND MAINTAIN UNINTERRUPTED SUPPLY. ANY DAMAGE INCURRED SHALL BE REPAIRED IMMEDIATELY TO THE SATISFACTION OF THE ENGINEER, AT THE CONTRACTORS EXPENSE.
- ALL HORIZONTAL CONTROLS ARE BASED ON MARYLAND STATE COORDINATES.
- ALL VERTICAL CONTROLS ARE BASED ON U.S.G.S. DATUM.
- ALL PIPE ELEVATIONS SHOWN ARE INVERT ELEVATIONS.
- CLEAR ALL UTILITIES BY A MINIMUM OF 6". CLEAR ALL POLES BY 2'-0" MINIMUM OR TUNNEL AS REQUIRED. ANY COST INCURRED TO THE CONTRACTOR FOR TUNNELING OR BRACING AT POLES SHALL BE INCLUDED IN UNIT PRICES BID FOR EXCAVATION AND BACKFILL.
- FOR DETAILS NOT SHOWN ON THE DRAWINGS USE HOWARD COUNTY STANDARD DETAILS.
- FOR MATERIALS AND CONSTRUCTION METHODS USE HOWARD COUNTY STANDARD SPECIFICATIONS.
- CONTRACTOR SHALL LOCATE EXISTING UTILITIES A MINIMUM OF TWO (2) WEEKS IN ADVANCE OF CONSTRUCTION OPERATIONS IN THE VICINITY OF PROPOSED UTILITIES AT HIS OWN EXPENSE.
- CONTRACTOR SHALL NOTIFY THE FOLLOWING UTILITIES OR AGENCIES AT LEAST FIVE(5) WORKING DAYS BEFORE STARTING WORK SHOWN ON THESE PLANS:
 BALTIMORE GAS AND ELECTRIC CO. - UNDERGROUND ELECTRIC DISTRIBUTION CUSTOMER SERVICE - (685-0123)
 BALTIMORE GAS AND ELECTRIC CO. - UNDERGROUND GAS DISTRIBUTION CUSTOMER SERVICE - (685-0123)
 ENGINEERING "DAMAGE CONTROL" - (234-5621)
 "MISS UTILITY" - (1-559-0100)
 CHESAPEAKE & POTOMAC (C&P) TELEPHONE COMPANY - (725-9976)
 BUREAU OF UTILITIES, HOWARD COUNTY - (992-2366)
- TREES ARE TO BE PROTECTED FROM DAMAGE TO MAXIMUM EXTENT. TREES LOCATED WITHIN THE CONSTRUCTION STRIP ARE NOT TO BE REMOVED OR DAMAGED BY THE CONTRACTOR.
- CONTRACTOR SHALL REMOVE TREES, STUMPS AND ROOTS ALONG LINE OF EXCAVATION AS DIRECTED BY THE ENGINEER. PAYMENT FOR SUCH REMOVAL SHALL BE INCLUDED IN THE UNIT PRICE BID FOR CONSTRUCTION OF THE MAIN.
- PLACE REGULATION "MEN WORKING" AND WARNING SIGNS AS REQUIRED TO COMPLY WITH MARYLAND STATE HIGHWAY ADMINISTRATION MANUAL OF TRAFFIC CONTROL FOR HIGHWAY CONSTRUCTION AND MAINTENANCE OPERATIONS.
- ALL WATER MAINS TO BE C.I.P. OR D.I.P. UNLESS OTHERWISE NOTED.
- VALVES ADJACENT TO TEES SHALL BE STRAPPED TO TEES.
- BLOCK ALL FITTINGS WITH CONCRETE.
- BURY LINE ELEVATIONS ON FIRE HYDRANTS SHALL BE SET TO THE ELEVATIONS SHOWN ON THE DRAWINGS. ALL FIRE HYDRANTS SHALL BE STRAPPED AND BUTTRESSED WITH CONCRETE IN ACCORDANCE WITH STANDARD DETAILS. SOIL AROUND THE FIRE HYDRANT TO BE COMPACTED IN ACCORDANCE WITH SECTIONS 37.01 AND 37.05 OF THE STANDARD SPECIFICATIONS AND DETAILS.
- ALL WATER HOUSE CONNECTIONS SHALL BE FOR AN INSIDE METER SETTING.
- THE CONTRACTOR SHALL NOT OPERATE ANY WATER MAIN VALVES ON THE EXISTING SYSTEM.
- WATER MAIN AND WATER HOUSE CONNECTION LINES MUST BE PLACED SO AS TO HAVE AT LEAST ONE (1) FOOT SEPARATION FROM THE SEWER MAIN OR SEWER HOUSE CONNECTION AS THEY PASS ABOUT IT.
- TOP OF ALL WATER MAINS TO HAVE A MINIMUM OF 3'-6" COVER UNLESS OTHERWISE NOTED.



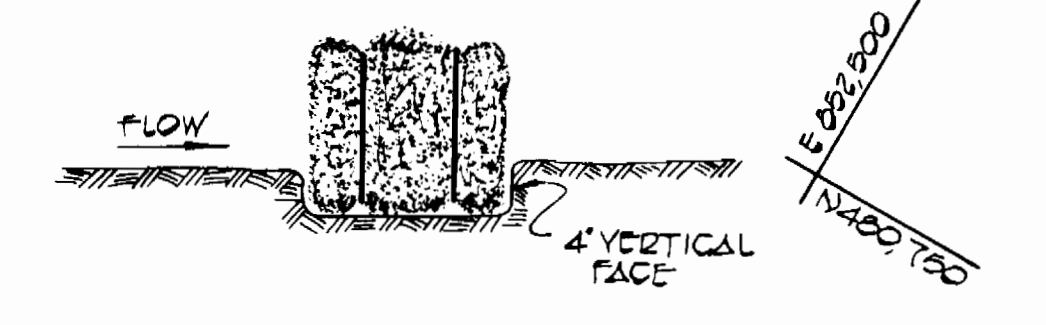
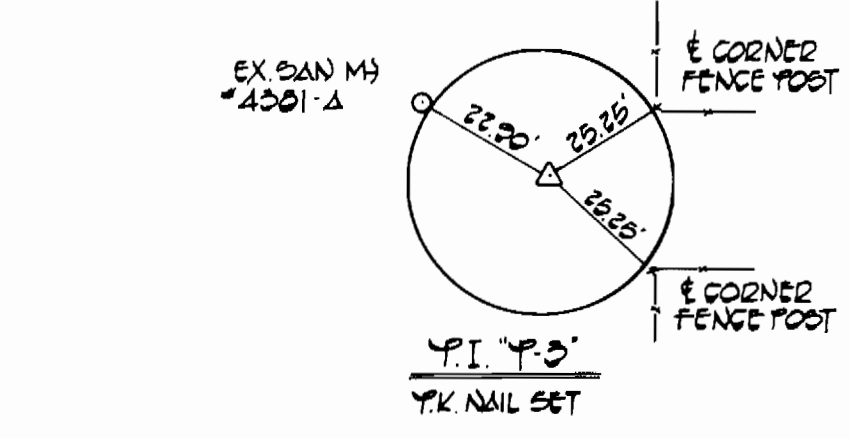
NOTE:
 CONTRACTOR SHALL NOT DISTURB EXISTING FENCE DURING INSTALLATION OF FIRE HYDRANT

PLAN
 SCALE: 1"=20'

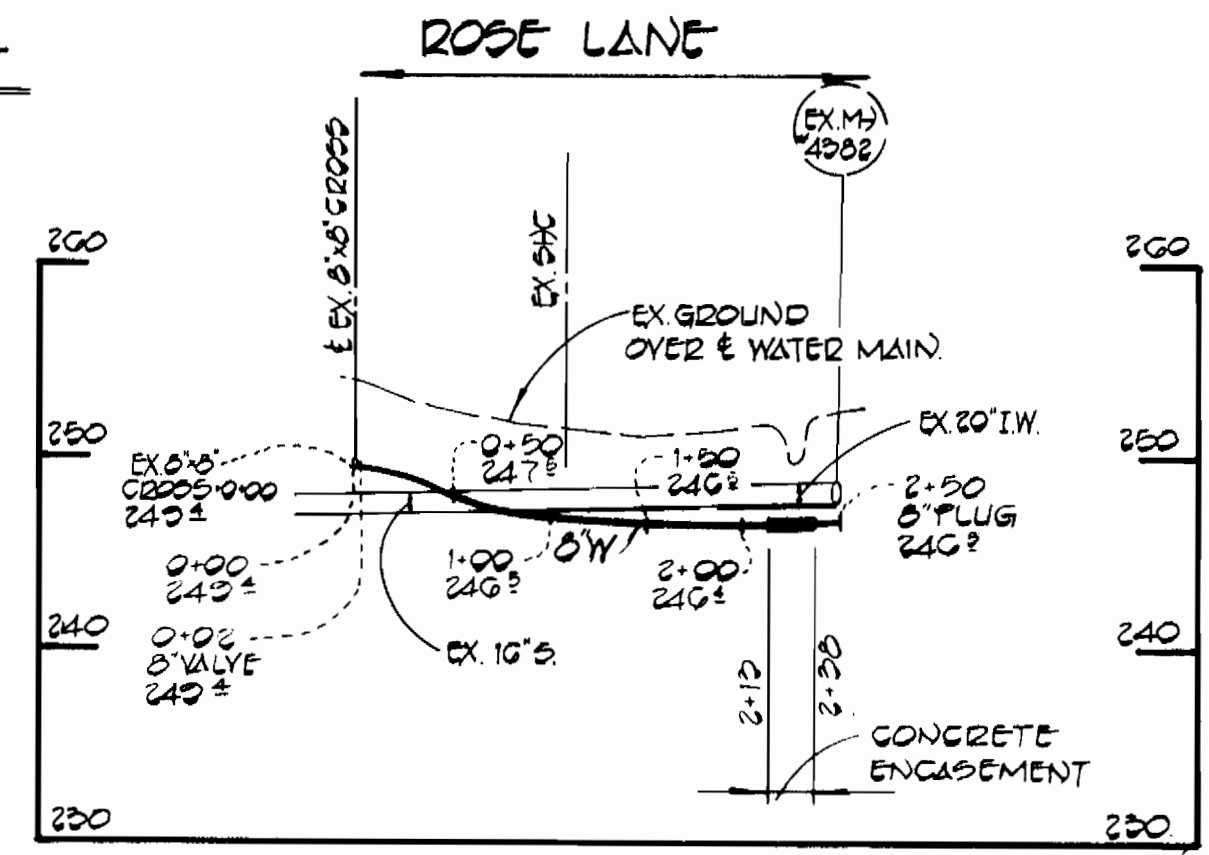
RIP-RAP TO CONSIST OF DENSE ROCKS OF RANDOM SHAPE AND SIZES, RESISTANT TO THE ACTION OF AIR AND WATER AND SUITABLE FOR BANK PROTECTION. ALL ROCKS TO WEIGH A MINIMUM OF 75 POUNDS.



UNGRADED RIP-RAP DETAIL
 NO SCALE



STRAW BALE DIKE
 NO SCALE



PROFILE
 SCALE: HOR. 1"=100'
 VERT. 1"=10'

THIS PLAN IS APPROVED FOR EROSION AND SEDIMENT CONTROL BY THE HOWARD SOIL CONSERVATION DISTRICT.

REVIEWED FOR HOWARD COUNTY SOIL CONSERVATION DISTRICT AND MEETS TECHNICAL REQUIREMENTS

TERRELL A. FISHER PE #9757 DATE 1-18-82

DEPARTMENT OF PUBLIC WORKS
 HOWARD COUNTY, MARYLAND

Director of Public Works: *William F. Nunn* 1-18-82
 Chief, Bureau of Engineering: *Allen J. Brown* 1-18-82
 Chief, Bureau of Utilities: *Allen J. Brown* 1-18-82

FISHER, COLLINS AND CARTER, INC.
 CIVIL ENGINEERS AND LAND SURVEYORS
 8388 COURT AVENUE
 ELLICOTT CITY, MARYLAND 21043

CONTRACT NO. 44-1030
 CAPITAL PROJECT W-8122

PLAN AND PROFILE WATER MAINS

QUANTITIES			
ITEM	EST'D	AS-BUILT	SUPPLIER
8" WATER	250 L.F.		
8" VALVE	1 EA.		
FIRE HYD.	1 EA.		
6" VALVE	1 EA.		
6" WATER	5 L.F.		
3/4" W.H.C.	30 L.F.		

ROSE LANE WATER MAIN EXTENSION ELECTION DISTRICT 6 HOWARD COUNTY, MARYLAND

DRAWING NO. 1 OF 1
 SCALE AS SHOWN
 DES: P.B.S.
 DRN: D.B.S.
 CHK: J.A.F.