

VICINITY MAP
SCALE: 1" = 600'

Type of Buildings	Townhouses
Number of Lots	39
Number of Water House Connections	39
Number of Sewer House Connections	39
Drainage Area	Little Patuxent River

GENERAL NOTES

- Approximate location of existing mains are shown. The contractor shall take all necessary precautions to protect existing mains and services and maintain uninterrupted supply. Any damage incurred shall be repaired immediately to the satisfaction of the Inspector, at the contractor's expense.
- All horizontal controls are based on Maryland State Coordinates.
- All vertical controls are based on U.S.G.S. Datum.
- All pipe elevations shown are invert elevations.
- Clear all utilities by a minimum of 6" clear all poles by 2'-0" minimum or tunnel as required. Any cost incurred to the contractor for tunneling or bracing at poles shall be included in unit prices bid for excavation and backfill.
- For details not shown on the drawings use Howard County Standard Details.
- For materials and construction methods use Howard County Standard Specifications.
- Contractor shall locate existing utilities a minimum of two (2) weeks in advance of construction operations in the vicinity of proposed utilities at his own expense.
- Contractor shall notify the following utilities or agencies at least five (5) working days before starting work shown on these plans.
 - State Highway Administration - 531-5533
 - Baltimore Gas & Electric Company - Underground Electric Distribution Customer Service - 685-0123
 - Baltimore Gas & Electric Company - Underground Gas Distribution Customer Service - 685-0123
 - Engineering - Damage Control - 234-5621
 - Miss Utility - 1-559-0100
 - Chesapeake & Potomac (C & P) Telephone Company - 725-9976
 - American Telephone and Telegraph - Cable Location Division - 393-3553
 - Colonial Pipeline Company - 781-4641
 - Bureau of Utilities Howard County - 992-2366
- Trees are to be protected from damage to maximum extent. Trees located within the construction strip are not to be removed or damaged by the contractor.
- Contractor shall remove trees, stumps, and roots along line of excavation as directed by the Inspector. Payment for such removal shall be included in the unit price bid for excavation and backfill.
- Place regulation "Men Working" and warning signs as required to comply with Maryland State Highway Administration Manual of Traffic Control for Highway Construction and Maintenance Operations.
- All water mains to be C.I.P. or D.I.P. unless otherwise noted.
- Top of all water mains to have a minimum of 3-1/2' cover unless otherwise noted.
- Valves adjacent to tees shall be strapped to tees.
- Block all fittings with concrete.
- Bury line elevations on fire hydrants shall be set to the elevations shown on the drawings. All fire hydrants shall be strapped and buttressed with concrete in accordance with standard details. Soil around the fire hydrant to be compacted in accordance with Section 5-15 of the Standard Specifications.
- All water house connections shall be for an inside meter setting.
- The contractor shall not operate any water main valves on the existing system.
- All sewer mains shall be C.S.P.X., V.C.P.X., P.V.C. or A.C.P. Class 2400 unless otherwise noted.
- The contractor shall provide a joint in all sewer mains within 2'-0" of exterior manhole wall.
- All manholes shall be 4'-0" inside diameter, unless otherwise noted.
- Water main and water house connection lines must have a minimum of one foot separation from the sanitary sewer and sewer house connections as they cross. Except at crossings, water and sewer lines shall have a minimum horizontal separation of 10'.

Sediment Control Measures will be implemented in accordance with Article No. 15 of the Specifications & with Road Construction Plan F-82-67; Drawing Sediment & Erosion Control.

REVIEWED FOR HOWARD SOIL CONSERVATION DISTRICT AND MEETS TECHNICAL REQUIREMENT.

James H. Nelson 1-27-82
SIGNATURE DATE

U.S. SOIL CONSERVATION SERVICE

This Development Plan is approved for Soil Erosion and Sediment Control by the Howard Soil Conservation District.

APPROVED: *William J. Rowe* 1-27-82
Howard S.C.D. DATE

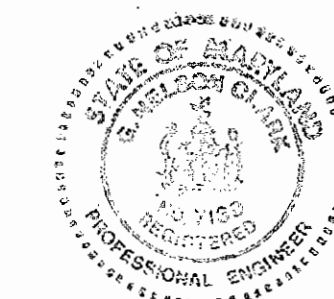
DEPARTMENT OF PUBLIC WORKS
HOWARD COUNTY, MARYLAND
William F. Nummy 2-3-81 *William J. Rowe* 2/3/82
DIRECTOR OF PUBLIC WORKS - DATE CHIEF, BUREAU OF ENGINEERING - DATE
Robert M. Bainger 2-2-81 *William J. Rowe* 2-2-82
CHIEF, BUREAU OF UTILITIES - DATE CHIEF, LAND DEVELOPMENT - DATE

CFE CLARK • FINEFROCK & SACKETT
ENGINEERS • PLANNERS • SURVEYORS
11315 LOCKWOOD DRIVE • SILVER SPRING, MARYLAND • (301) 593-3400

CONTRACT NO. 24-1026D W&S

GLEN OAKS

**HOWARD COUNTY, MARYLAND
DEPARTMENT OF PUBLIC WORKS**



W. J. Rowe
12-7-81

QUANTITIES			
ITEM	BID	AS-BUILT	MATERIAL/SUPPLIER
6" Water	116 LF	116	Griffin D.I.P.
8" Water	621 LF	621	Griffin D.I.P.
8" Sewer	714 LF	716	Logan Clay Pipe
F.H.	3 EA.	3	American Darling
8" Valve	2 EA.	2	Mueller Co./A&P Supplies
6" Valve excluding F.H.	1 EA.	1	Mueller Co./A&P Supplies

GLEN OAKS
(CAHALL PROPERTY)
SECTION ONE

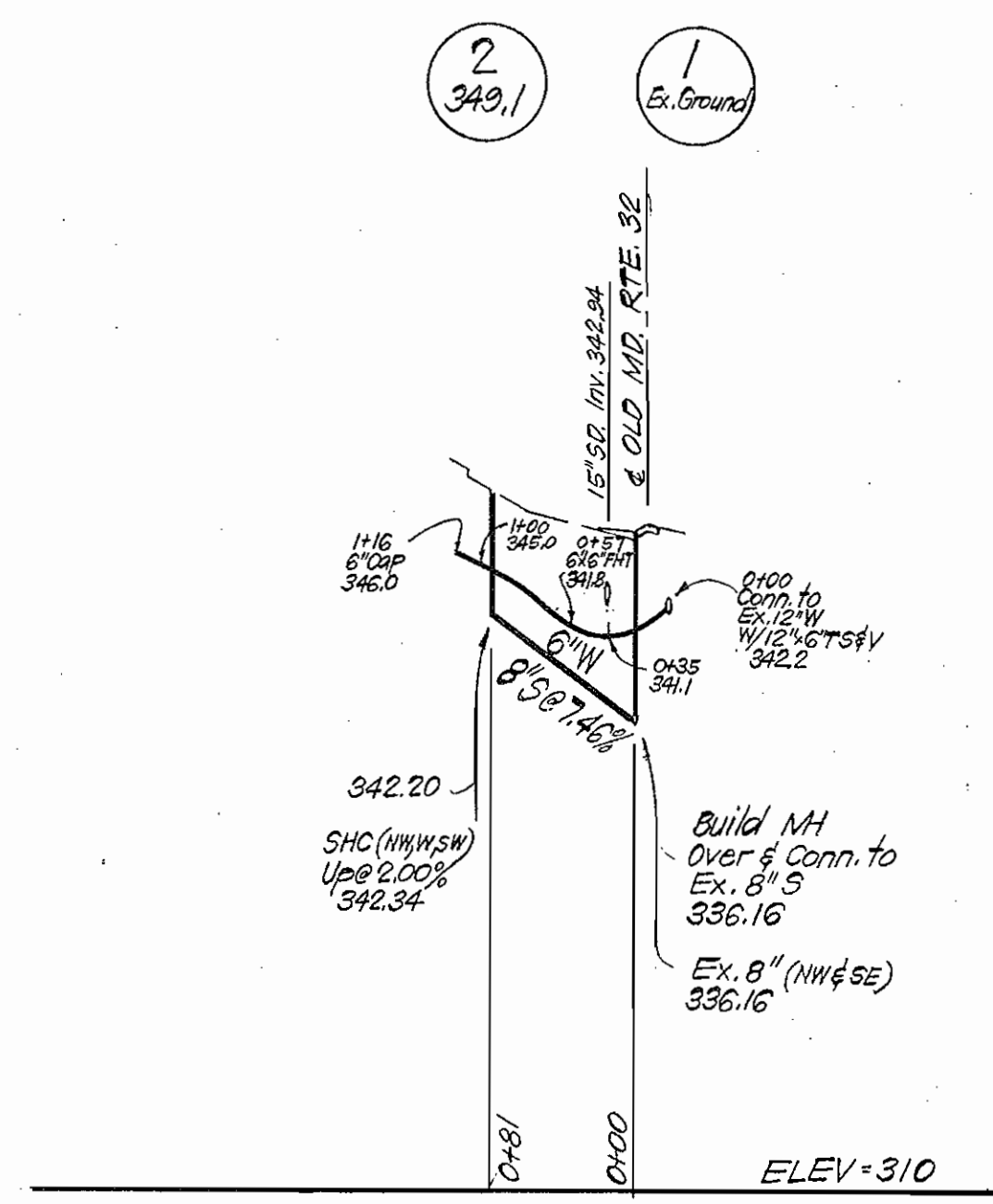
CONTRACT NO. 24-1026D W&S

TITLE SHEET

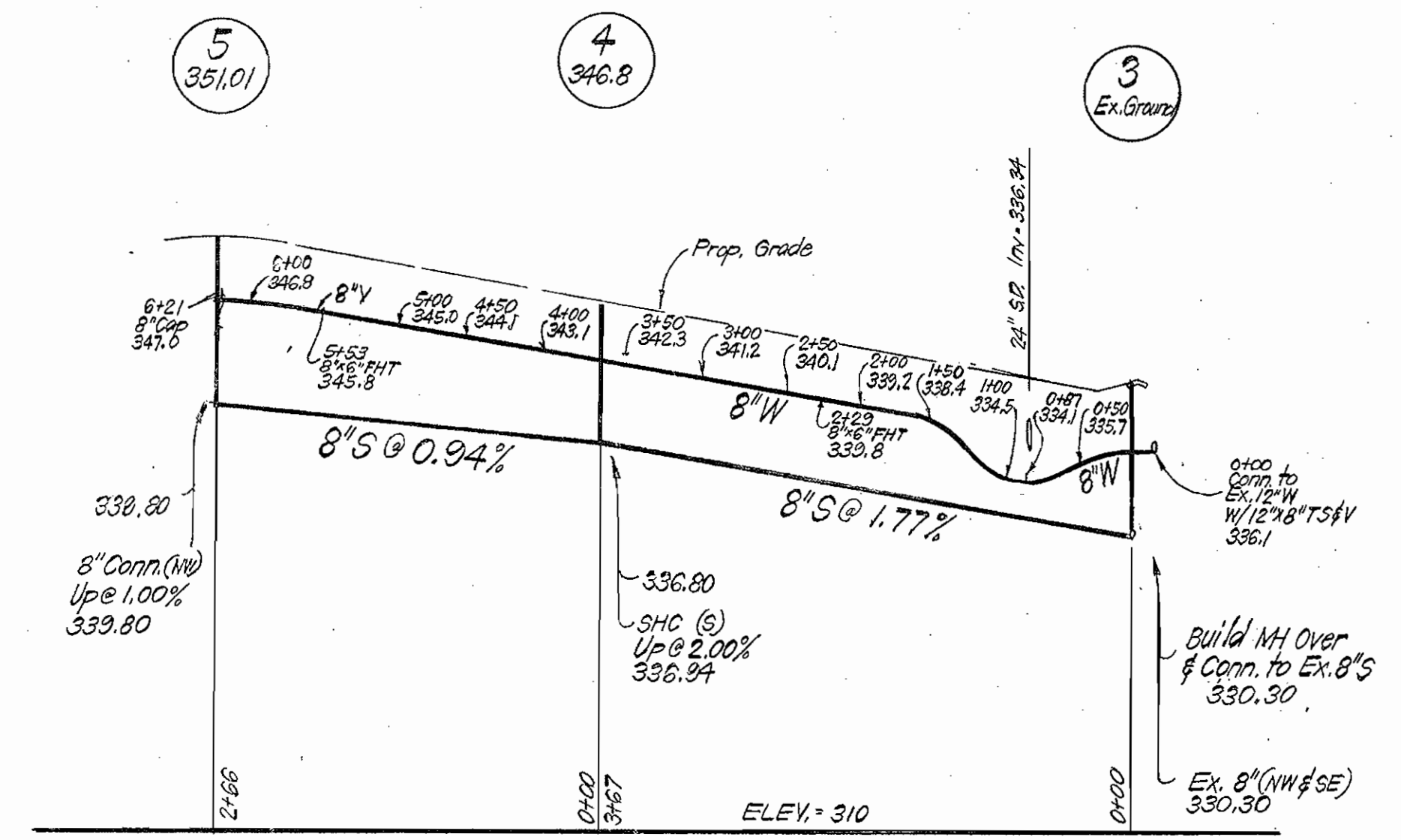
GLEN OAKS
SECTION ONE
6TH ELECTION DISTRICT

DRAWING NO. 1 OF 2 SCALE As Shown

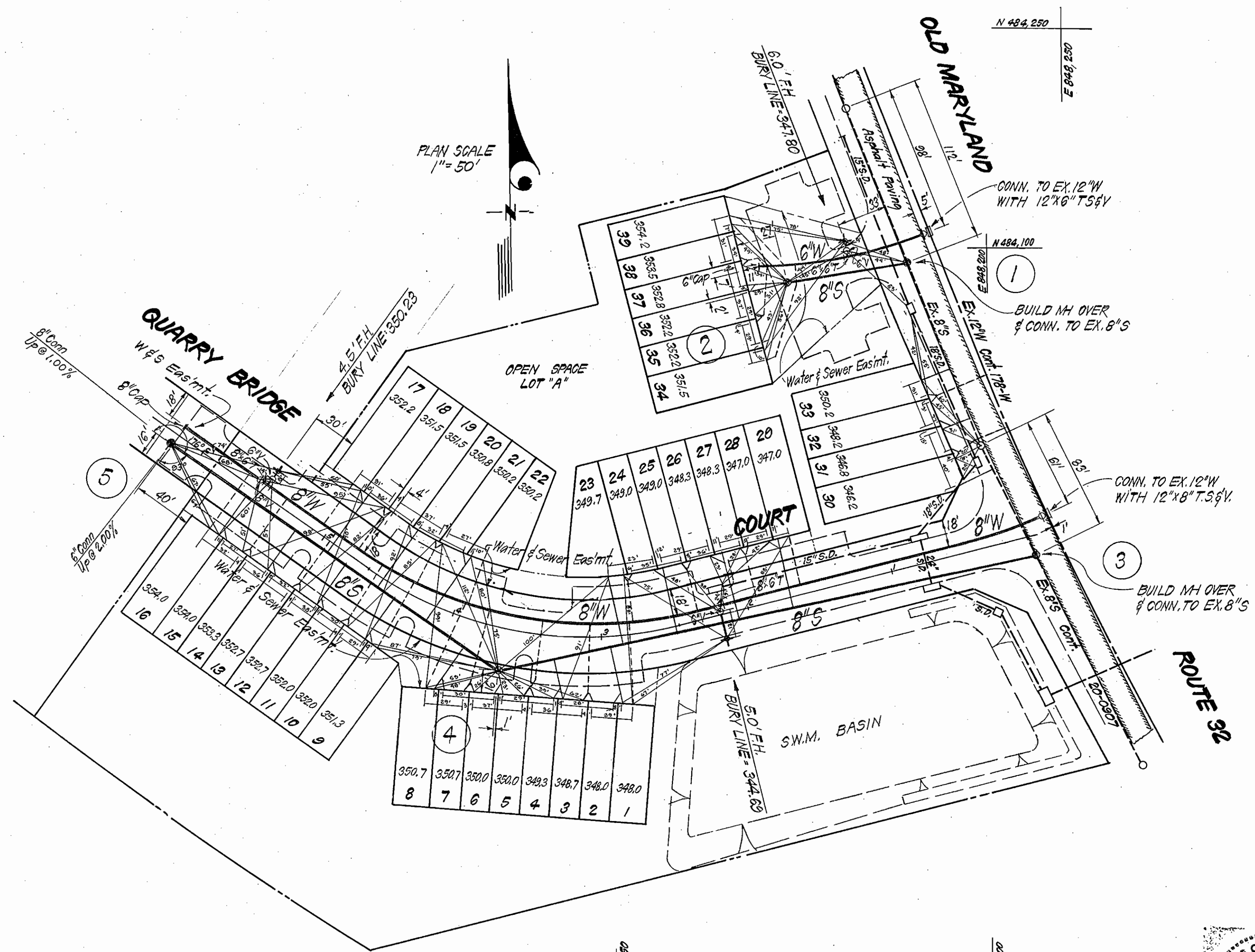
As Built June 1982



QUARRY BRIDGE COURT



PROFILE SCALE
HOR. 1"=100'
VERT. 1"=10'



PLAN SCALE
1"=50'



L. Nelson Clark
12-7-81

DEPARTMENT OF PUBLIC WORKS
HOWARD COUNTY, MARYLAND
DIRECTOR OF PUBLIC WORKS - DATE 2-3-82
CHIEF, BUREAU OF ENGINEERING - DATE 2/13/82
CHIEF, BUREAU OF UTILITIES - DATE 2-2-81
CHIEF, LAND DEVELOPMENT DIVISION - DATE 2-2-81

CLARK • FINEFROCK & SACKETT
ENGINEERS • PLANNERS • SURVEYORS
11315 LOCKWOOD DRIVE • SILVER SPRING, MARYLAND • (301) 593-3400

CONTRACT NO. 24-1026.D W&S.

PLAN AND PROFILES OF
WATER & SEWER MAINS

GLEN OAKS
SECTION ONE
6TH ELECTION DISTRICT

DRAWING NO. 2 OF 2 SCALE As Shown

As Built June 1982

SM
2/29201