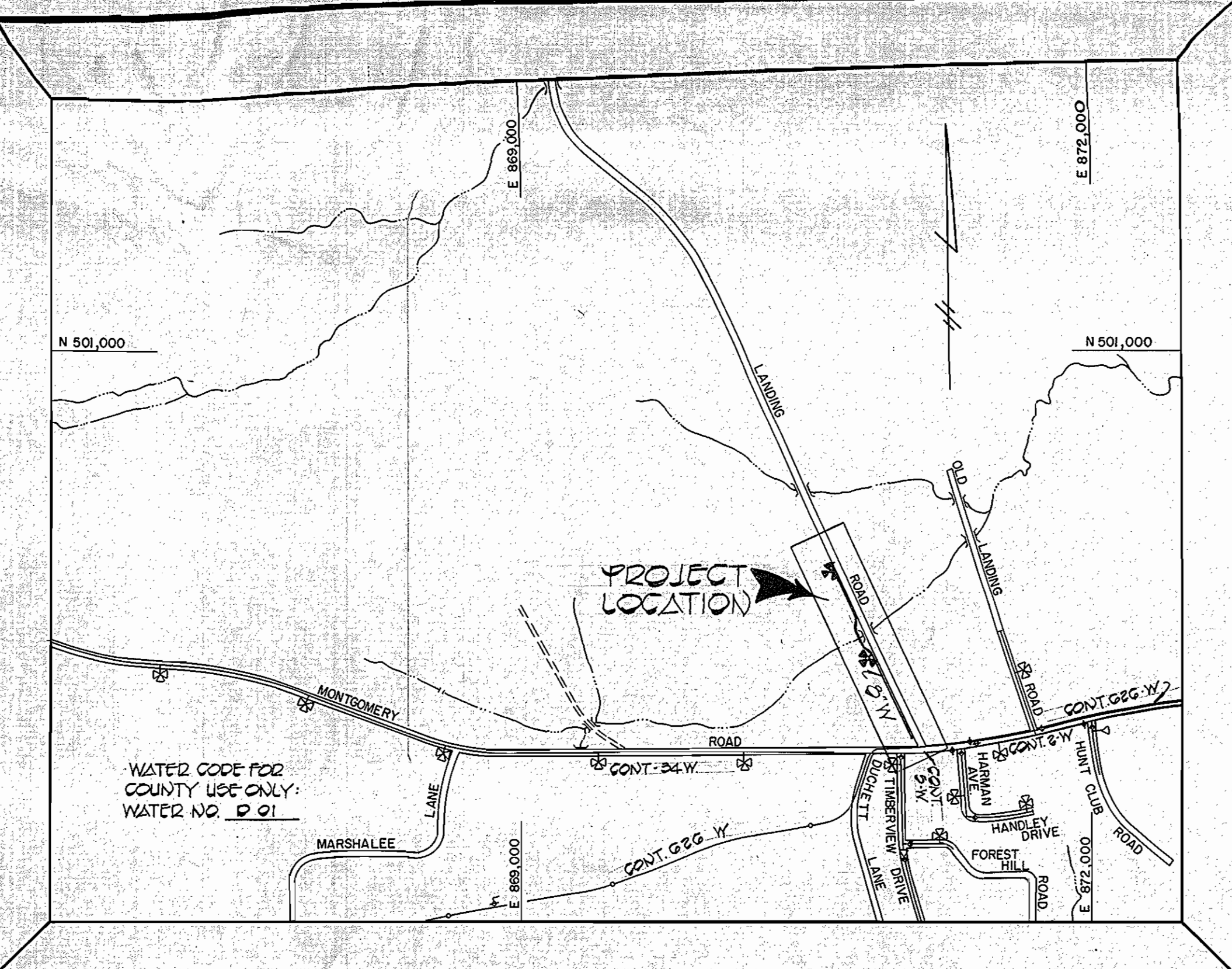


BENCH MARKS

HO CO MON #2440002-R ELEV. 226.82'
 REINFORCING STEEL BAR SET 20'
 BELOW GROUND
 F.G.C. #P-2 ELEV. 224.10
 P.K. NAIL SET IN LANDING ROAD IN
 FRONT OF HOUSE #5707



TYPE OF BUILDINGS: RESIDENTIAL
 NUMBER OF PARCELS: 4
 NUMBER OF WATER HOUSE CONNS: 3
 DRAINAGE AREA: 1.24 AC

VICINITY MAP
 SCALE: 1"=600'

GENERAL NOTES

- APPROXIMATE LOCATION OF EXISTING MAINS ARE SHOWN. THE CONTRACTOR SHALL TAKE ALL NECESSARY PRECAUTIONS TO PROTECT EXISTING MAINS AND SERVICES AND MAINTAIN UNINTERRUPTED SUPPLY. ANY DAMAGE INCURRED SHALL BE REPAIRED IMMEDIATELY TO THE SATISFACTION OF THE ENGINEER, AT THE CONTRACTOR'S EXPENSE.
- ALL HORIZONTAL CONTROLS ARE BASED ON MARYLAND STATE COORDINATES.
- ALL VERTICAL CONTROLS ARE BASED ON U.S.G.S. DATUM.
- ALL PIPE ELEVATIONS SHOWN ARE INVERT ELEVATIONS.
- CLEAR ALL UTILITIES BY A MINIMUM OF 6". CLEAR ALL POLES BY 2'-0" MINIMUM OR TUNNEL AS REQUIRED. ANY COST INCURRED TO THE CONTRACTOR FOR TUNNELING OR BRACING AT POLES SHALL BE INCLUDED IN UNIT PRICES BID FOR EXCAVATION AND BACKFILL.
- FOR DETAILS NOT SHOWN ON THE DRAWINGS USE HOWARD COUNTY STANDARD DETAILS.
- FOR MATERIALS AND CONSTRUCTION METHODS USE HOWARD COUNTY STANDARD SPECIFICATIONS.
- CONTRACTOR SHALL LOCATE EXISTING UTILITIES A MINIMUM OF TWO (2) WEEKS IN ADVANCE OF CONSTRUCTION OPERATIONS IN THE VICINITY OF PROPOSED UTILITIES AT HIS OWN EXPENSE.
- CONTRACTOR SHALL NOTIFY THE FOLLOWING UTILITIES OR AGENCIES AT LEAST FIVE (5) WORKING DAYS BEFORE STARTING WORK SHOWN ON THESE PLANS:
 BALTIMORE GAS AND ELECTRIC CO. - UNDERGROUND ELECTRIC DISTRIBUTION CUSTOMER SERVICE - (685-0123)
 BALTIMORE GAS AND ELECTRIC CO. - UNDERGROUND GAS DISTRIBUTION CUSTOMER SERVICE - (685-0123)
 ENGINEERING - "DAMAGE CONTROL" - (234-5621)
 "MISS UTILITY" - (1-559-0100)
 CHESAPEAKE & POTOMAC (C&P) TELEPHONE COMPANY - (725-9976)
 BUREAU OF UTILITIES, HOWARD COUNTY - (992-2366)
- TREES ARE TO BE PROTECTED FROM DAMAGE TO MAXIMUM EXTENT. TREES LOCATED WITHIN THE CONSTRUCTION STRIP ARE NOT TO BE REMOVED OR DAMAGED BY THE CONTRACTOR.
- CONTRACTOR SHALL REMOVE TREES, STUMPS AND ROOTS ALONG LINE OF EXCAVATION AS DIRECTED BY THE ENGINEER. PAYMENT FOR SUCH REMOVAL SHALL BE INCLUDED IN THE UNIT PRICE BID FOR EXCAVATION & BACKFILL.
- PLACE REGULATION "MEN WORKING" AND WARNING SIGNS AS REQUIRED TO COMPLY WITH MARYLAND STATE HIGHWAY ADMINISTRATION MANUAL OF TRAFFIC CONTROL FOR HIGHWAY CONSTRUCTION AND MAINTENANCE OPERATIONS.
- ALL WATER MAINS TO BE C.I.P. OR D.I.P. UNLESS OTHERWISE NOTED.
- TOP OF ALL WATER MAINS TO HAVE A MINIMUM OF 4'-0" COVER UNLESS OTHERWISE NOTED.
- VALVES ADJACENT TO TEES SHALL BE STRAPPED TO TEES.
- BLOCK ALL FITTINGS WITH CONCRETE.
- BURY LINE ELEVATIONS ON FIRE HYDRANTS SHALL BE SET TO THE ELEVATIONS SHOWN ON THE DRAWINGS. ALL FIRE HYDRANTS SHALL BE STRAPPED AND BUTTRESSED WITH CONCRETE IN ACCORDANCE WITH STANDARD DETAILS. SOIL AROUND THE FIRE HYDRANT TO BE COMPACTED IN ACCORDANCE WITH SECTION 5-15 OF THE STANDARD SPECIFICATIONS.
- ALL WATER HOUSE CONNECTIONS SHALL BE FOR AN INSIDE METER SETTING.
- THE CONTRACTOR SHALL NOT OPERATE ANY WATER MAIN VALVES ON THE EXISTING SYSTEM.
- WATER MAIN AND WATER HOUSE CONNECTION LINES MUST BE PLACED SO AS TO HAVE AT LEAST ONE (1) FOOT SEPARATION FROM THE SEWER MAIN OR SEWER HOUSE CONNECTION AS THEY PASS ABOUT IT.

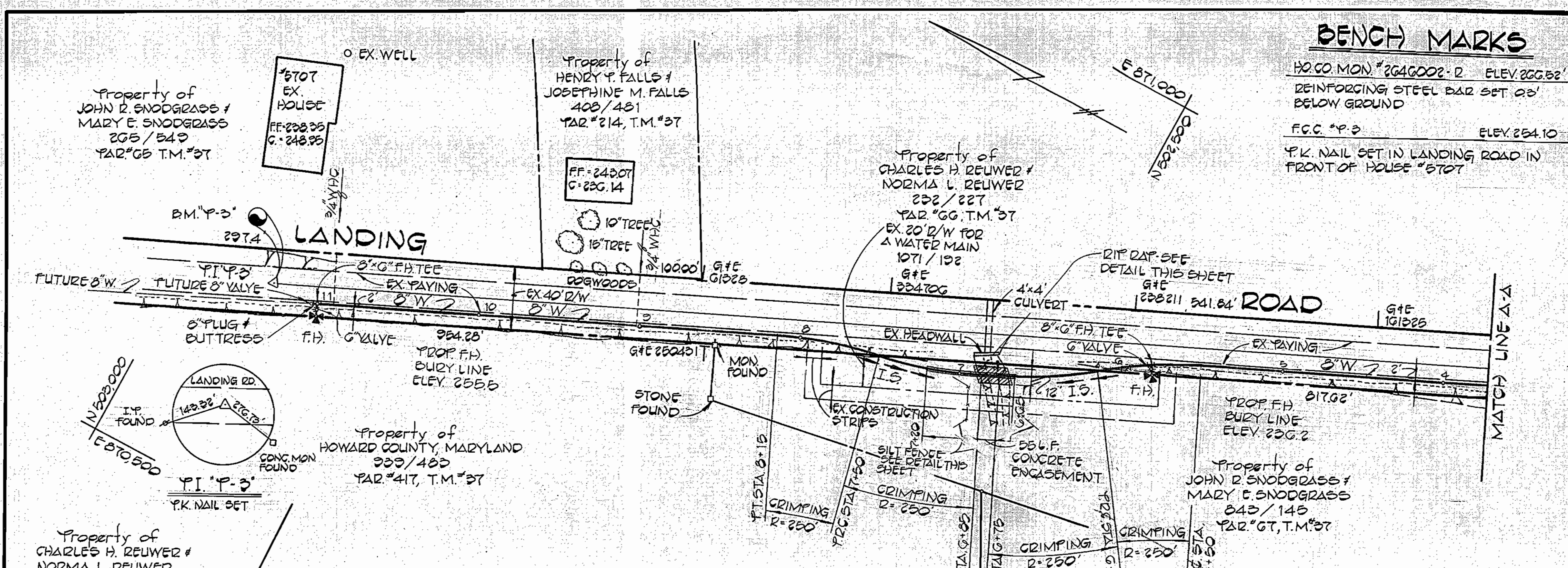
THIS PLAN IS APPROVED FOR DESIGN AND SEWAGE CONTROL BY THE HOWARD SOIL CONSERVATION DISTRICT APPROVED:

John F. Fisher 12-9-81
 HOWARD SOIL CONSERVATION DISTRICT DATE
 REVIEWED FOR HOWARD COUNTY SOIL CONSERVATION DISTRICT AND MEETS TECHNICAL REQUIREMENTS
John F. Fisher 12-11-81
 HOWARD COUNTY SOIL CONSERVATION SERVICE DATE

QUANTITIES			
ITEM	EST'D	AS BUILT	SUPPLIER
8" WATER	1102 L.F.		
6" WATER	10 L.F.		
FIRE HYD.	2 EA.		
12" TAPPING			
5/8" VALVES	1 EA.		
6" VALVES	2 EA.		
3/4" WATER	6 L.F.		

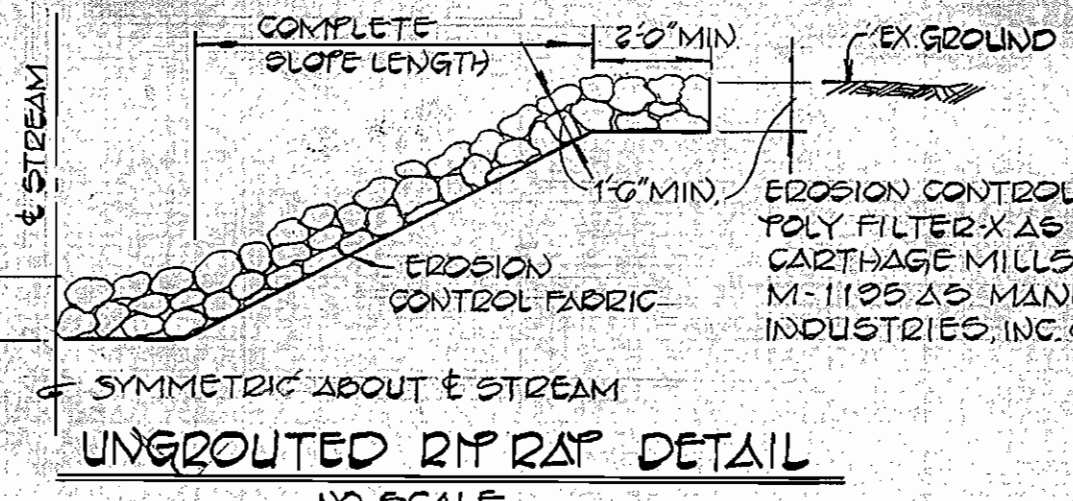
CONTRACT NO. 44-1024
 CAPITAL PROJECT W-8122
 LANDING ROAD
 WATER MAIN EXTENSION
 HOWARD COUNTY, MD.

DRAWING NO. 1 OF 1
 SCALE AS SHOWN
 DES. R.B.S.
 DRN. D.B.S.
 CHK. T.A.F.

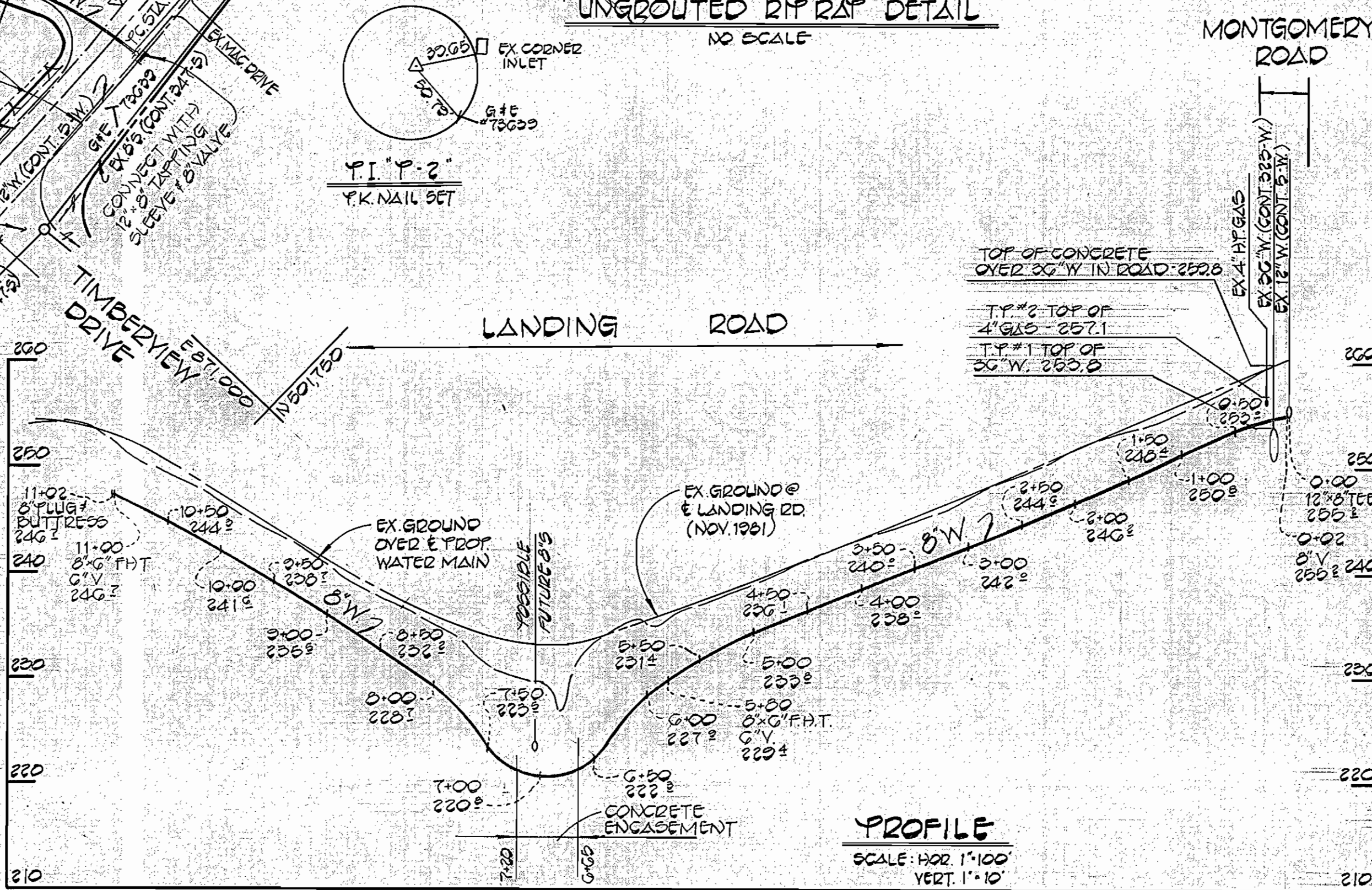


PLAN
 1"=50'

RIP RAP TO CONSIST OF DENSE ROCKS OF RANDOM SHAPE AND SIZE, RESISTANT TO THE ACTION OF AIR AND WATER AND SUITABLE FOR BANK PROTECTION. ALL ROCKS TO WEIGH A MINIMUM OF 75 POUNDS

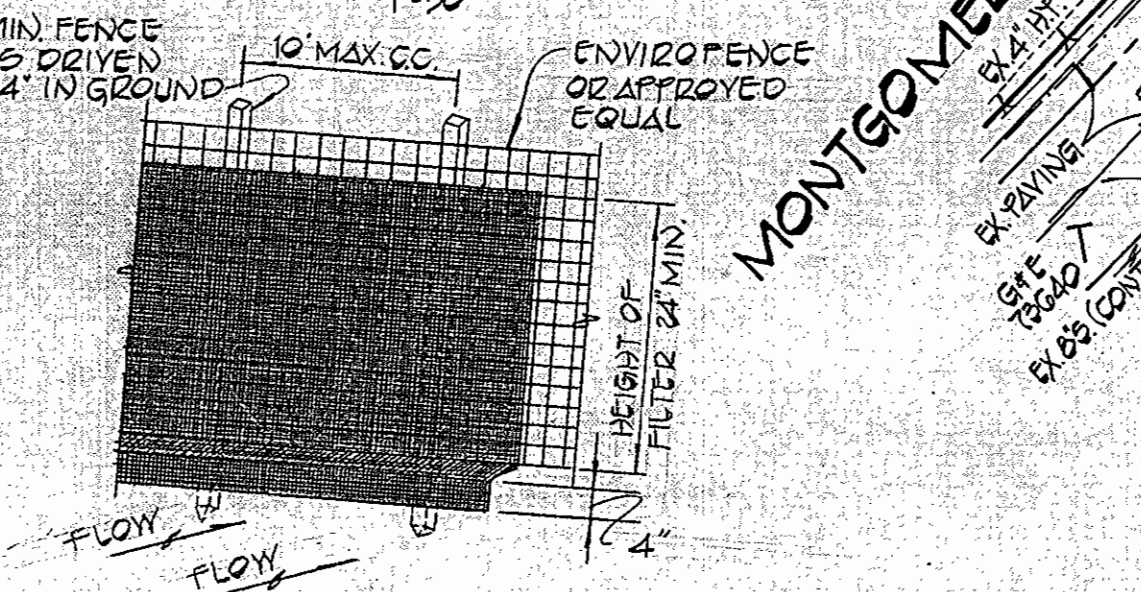


UNGRADED RIP RAP DETAIL
 NO SCALE

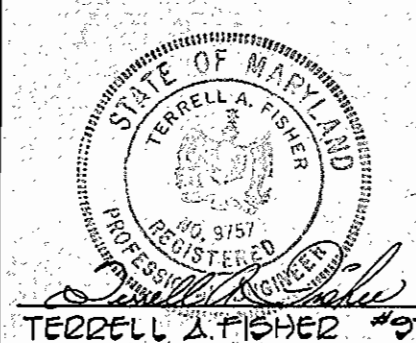


PROFILE
 SCALE: HOR. 1"=100'
 VERT. 1"=10'

NOTE: CONTRACTOR SHALL REMOVE EX CONCRETE STRUCTURE AND PLUG EX PIPE



SILT FENCE DETAIL
 NO SCALE



DEPARTMENT OF PUBLIC WORKS
 HOWARD COUNTY, MARYLAND
 John F. Fisher 12-9-81
 DIRECTOR OF PUBLIC WORKS DATE
 Allen D. Brown 12-9-81
 CHIEF, BUREAU OF UTILITIES DATE

FISHER, COLLINS AND CARTER, INC.
 CIVIL ENGINEERS AND LAND SURVEYORS
 8388 COURT AVENUE
 ELLICOTT CITY, MARYLAND 21043

CONTRACT NO. 44-1024
 CAPITAL PROJECT W-8122

PLAN & PROFILE
 WATER MAINS

LANDING ROAD
 WATER MAIN EXTENSION
 ELECTION DISTRICT I
 HOWARD COUNTY, MARYLAND

1024/1 W